

Prepared For:
**EssexNorth
 Portland LLC**

Consultant:

ARCHETYPE
 architects
 48 Union Wharf Portland, Maine 04101
 (207) 772-6022 Fax (207) 772-4056

Architect:

Project:
**THAMES STREET
 CONDOMINIUM**

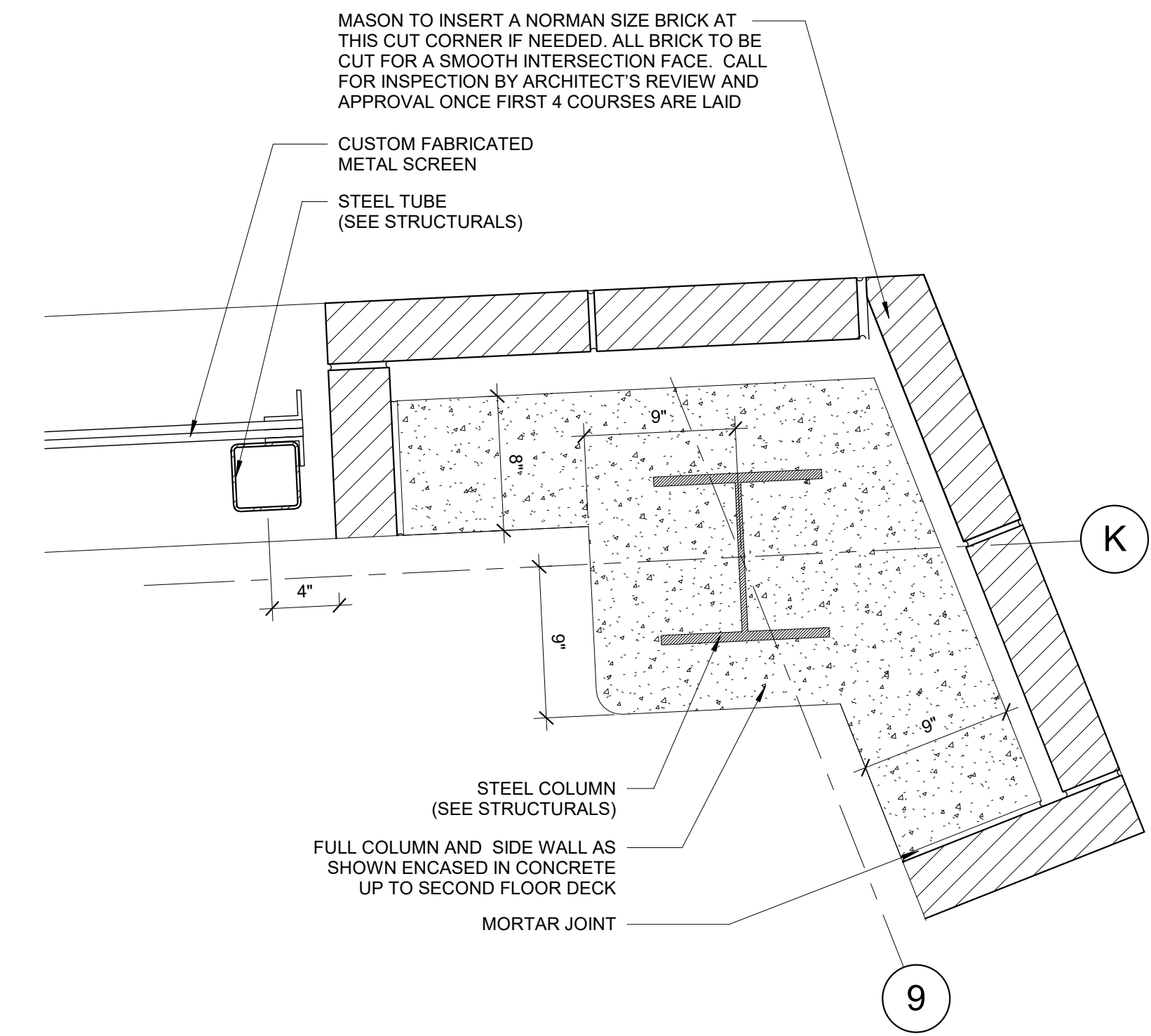
20 Thames Street, Portland Maine

Revisions:
 7/21/2017 BID SET

Date: JULY 21, 2017
 Scale: 1 1/2" = 1'-0"

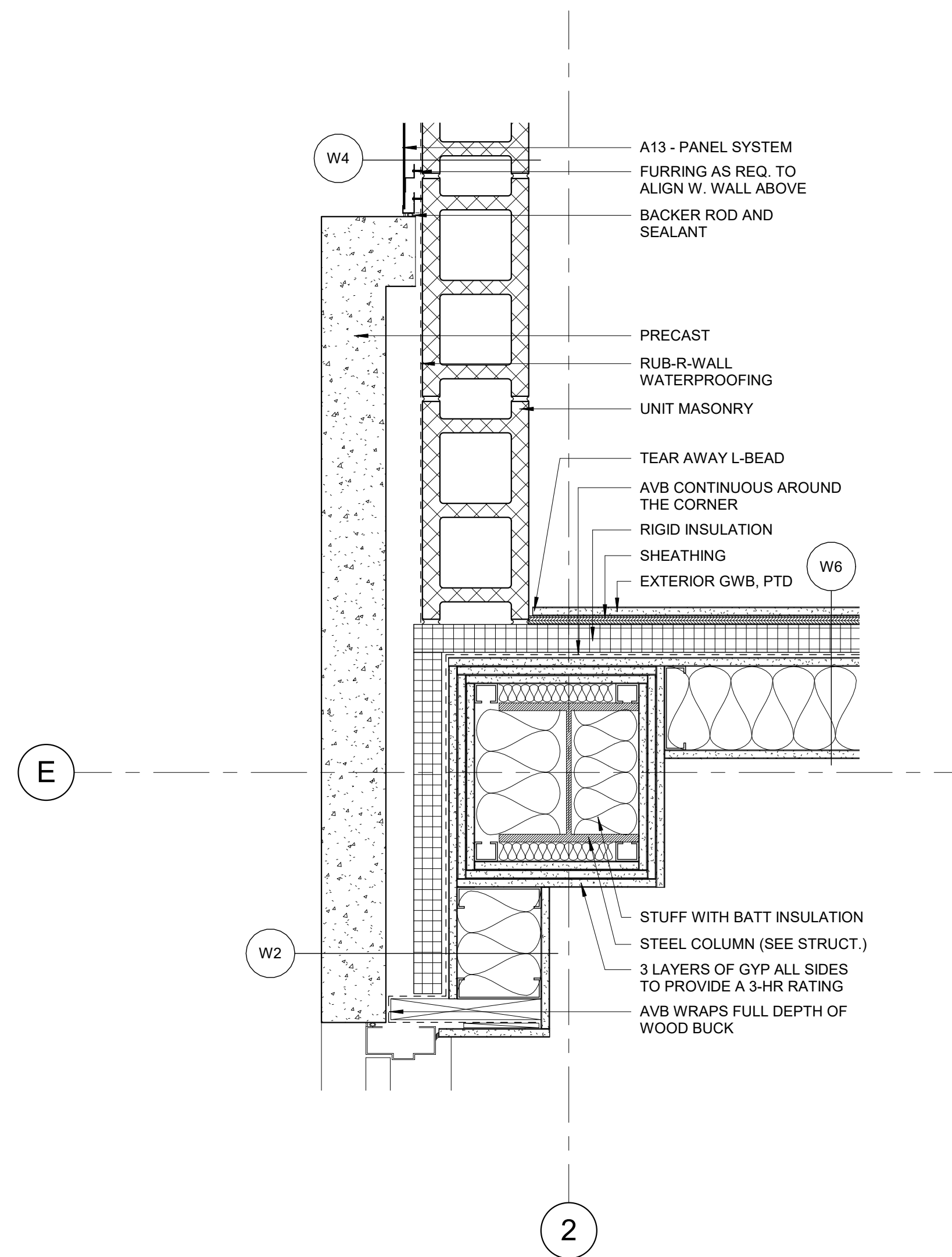
DETAILS

A5.21



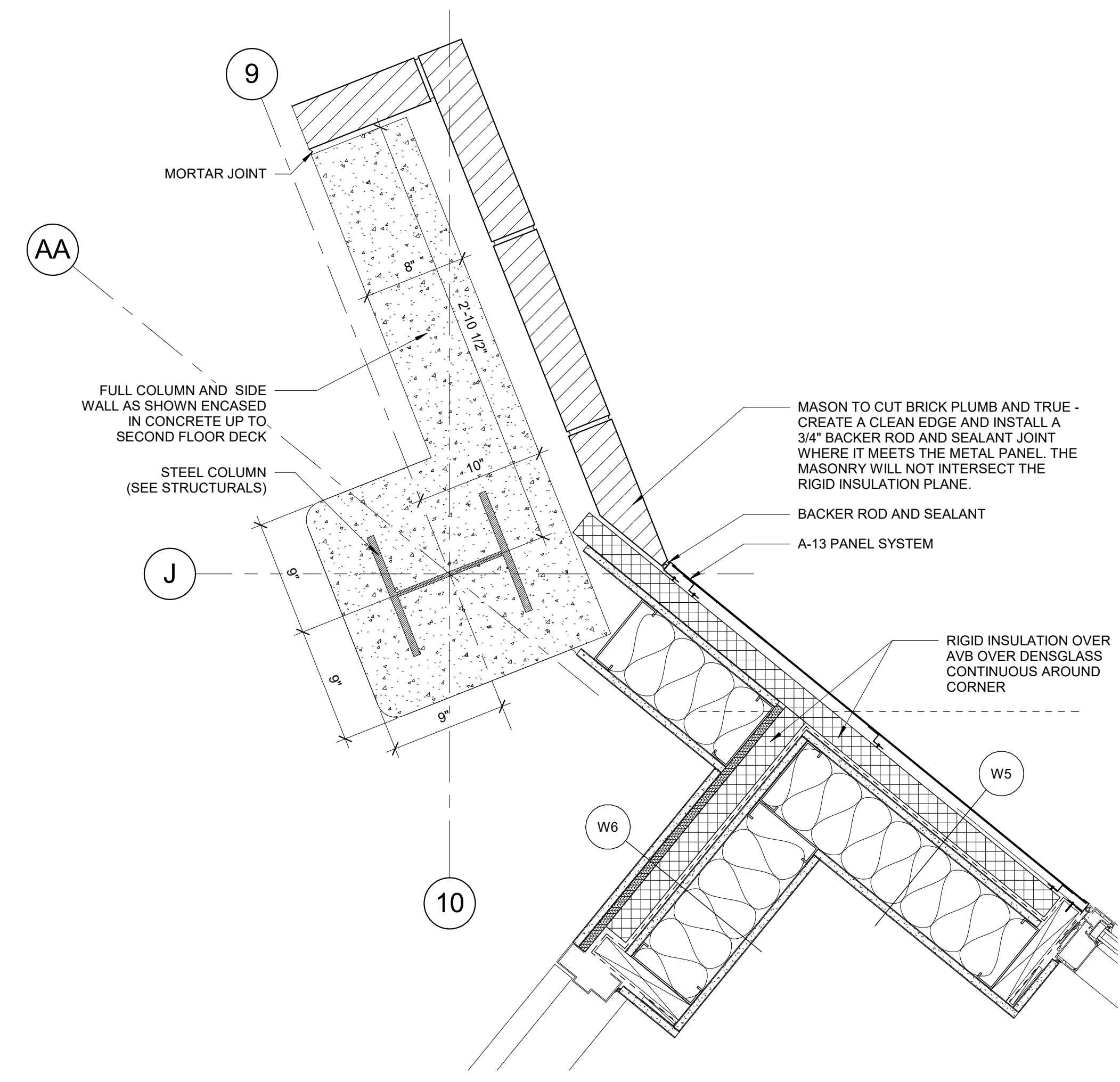
2 | PLAN DETAIL AT VEHICLE ENTRANCE

1 1/2" = 1'-0" 0 0.5 1 1.0 2.0



3 | PLAN DETAIL AT MECH RM.

1 1/2" = 1'-0" 0 0.5 1 1.0 2.0



1 | PLAN DETAIL @ VEHICLE ENTRANCE

1 1/2" = 1'-0" 0 0.5 1 1.0 2.0