

Prepared For:
**EssexNorth
 Portland LLC**
 P.O. Box 394
 Topsfield, MA 01983

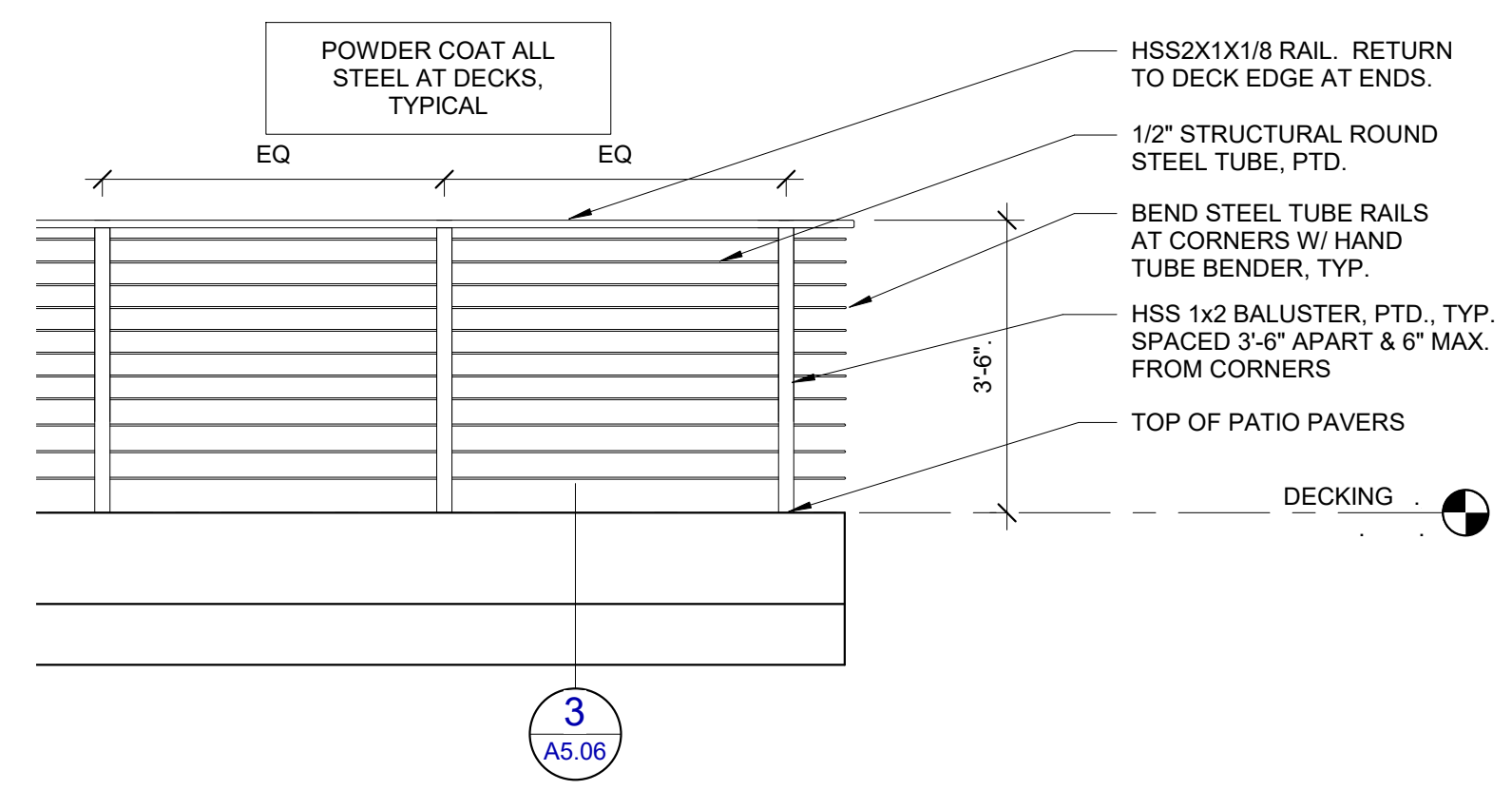
Architect:
**ARCHETYPE
 architects**
 48 Union Wharf Portland, Maine 04101
 (207) 772-6022 Fax (207) 772-4056

Project:
**THAMES STREET
 CONDOMINIUM**
 20 Thames Street, Portland Maine

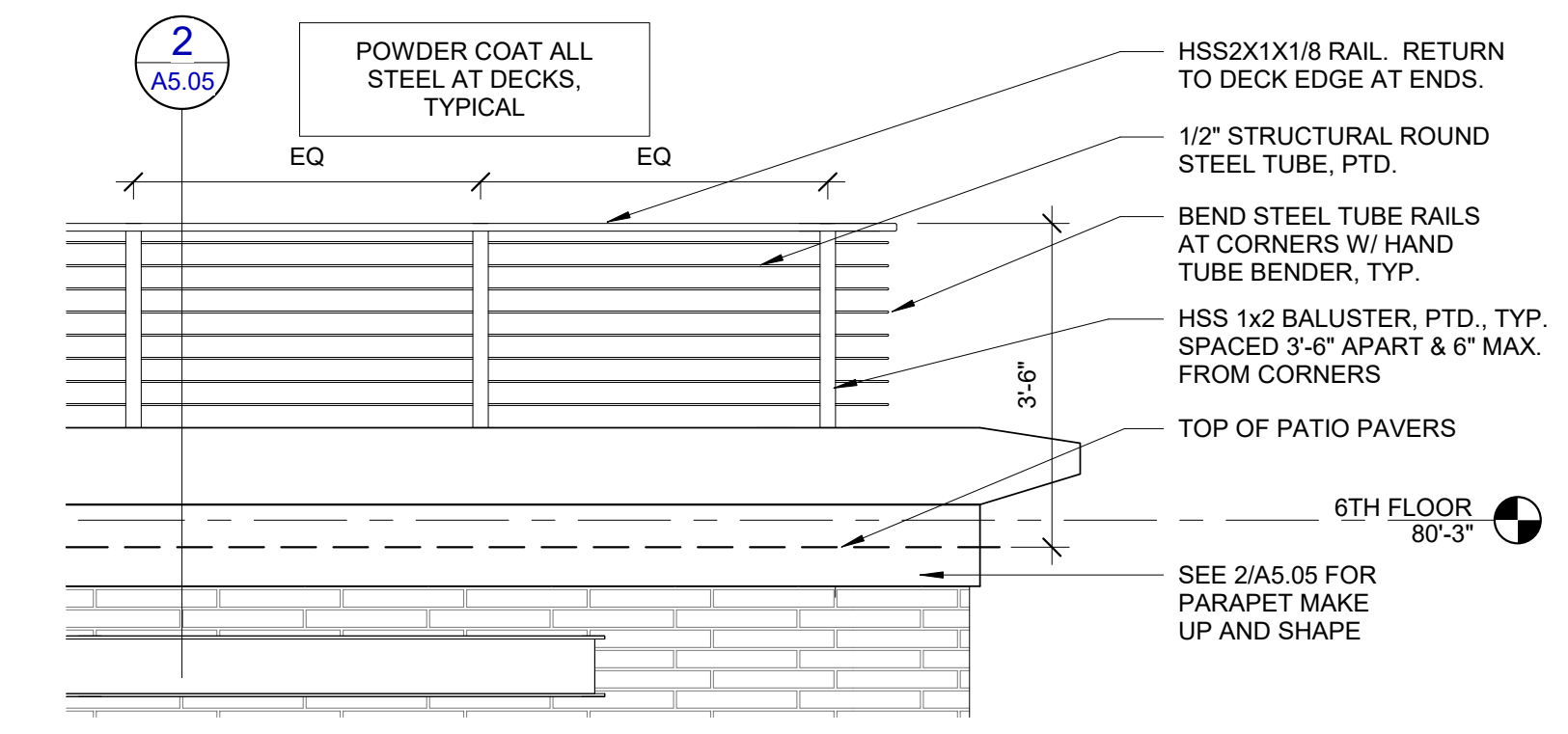
Revisions:
 4 08/15/17 ADDENDUM 2

Date: 15 AUG 2017
 Scale: As indicated
DETAILS

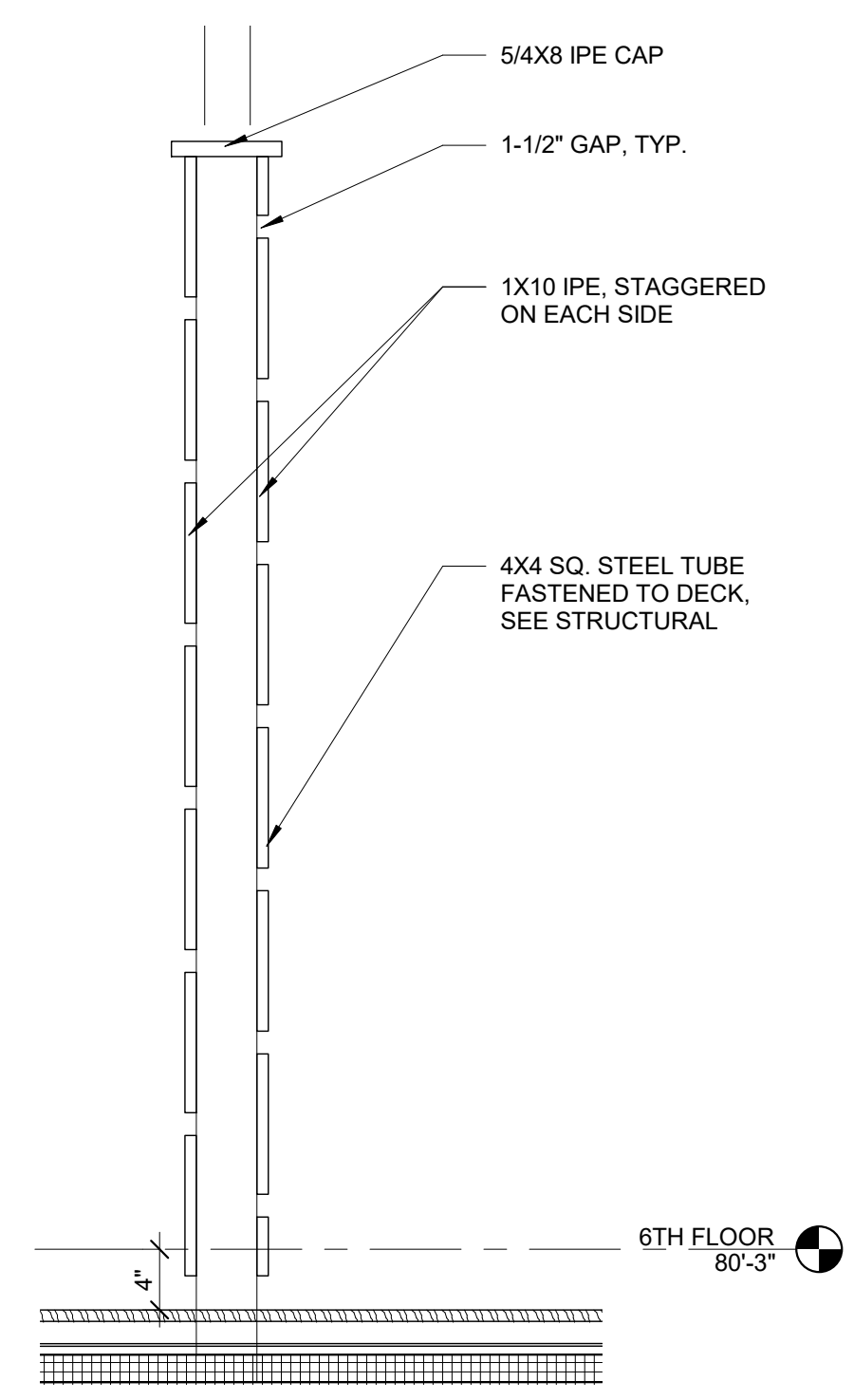
A5.20



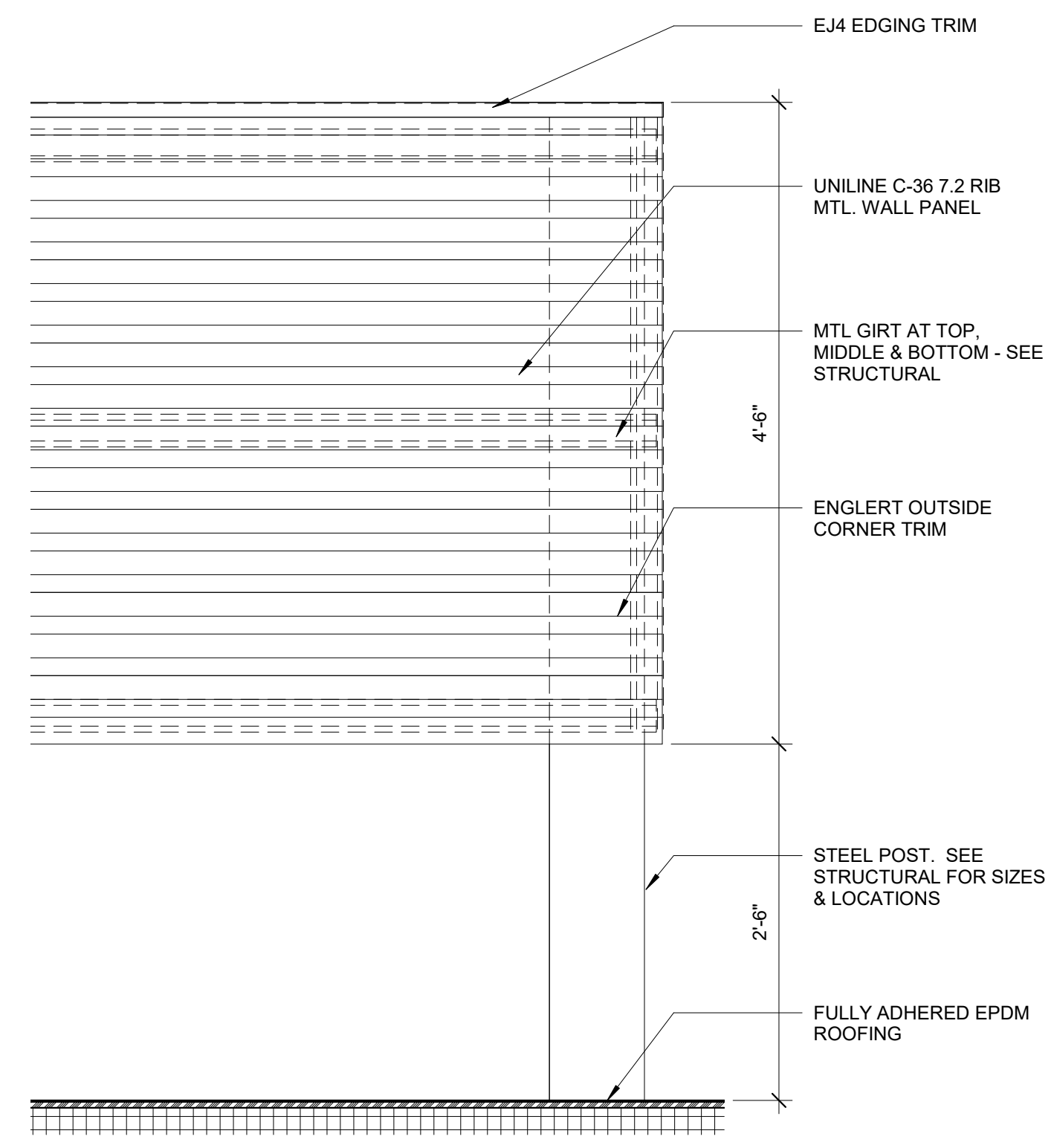
7 | TYP. EXT. GUARDRAIL ELEVATION
 1/2" = 1'-0"



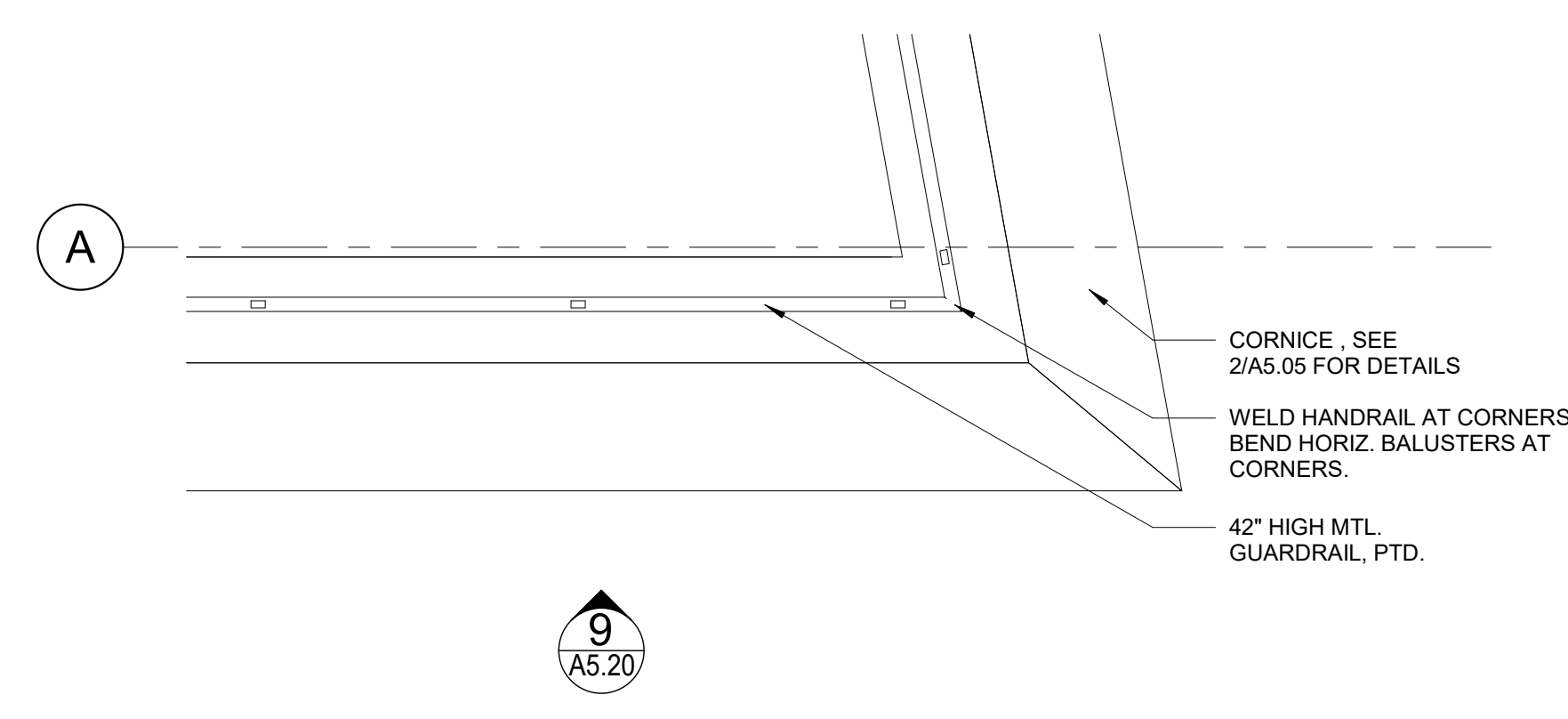
9 | 6TH FL. GUARDRAIL ELEVATION
 1/2" = 1'-0"



5 | IPE DECK SCREEN SECTION
 1" = 1'-0"

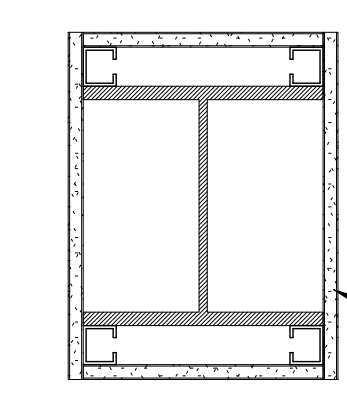


3 | MECHANICAL SCREENING ELEVATION
 1" = 1'-0"



2 | TYP. EXT. GUARDRAIL PLAN
 1/2" = 1'-0"

1 HR NON-COMBUSTIBLE COLUMN PROTECTION SYSTEM
 DESIGN NUMBER - GA FILE NO. CM 1001

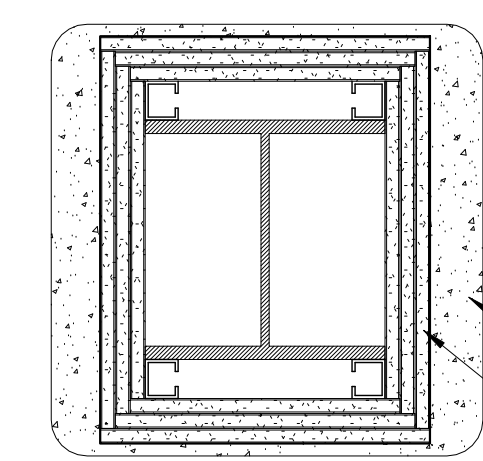


GENERAL NOTE: THE ENTIRE COLUMN SHALL BE PROVIDED INDIVIDUAL ENCASEMENT PROTECTION BY PROTECTING IT ON ALL SIDES FOR THE FULL COLUMN LENGTH, INCLUDING CONNECTIONS TO OTHER STRUCTURAL MEMBERS, WITH MATERIALS HAVING REQUIRED FIRE RESISTANCE RATING. WHERE THE COLUMN EXTENDS THROUGH A CEILING, THE ENCASEMENT PROTECTION SHALL BE CONTINUOUS FROM THE TOP OF THE FOUNDATION THROUGH THE CEILING SPACE TO THE TOP OF THE COLUMN

ONE LAYER OF 5/8" GYPSUM FROM TOP OF CONCRETE TO UNDERSIDE OF DECK ABOVE

6 | 1 HR RATED WIDE FLANGE COLUMN ENCLOSURE
 1 1/2" = 1'-0"

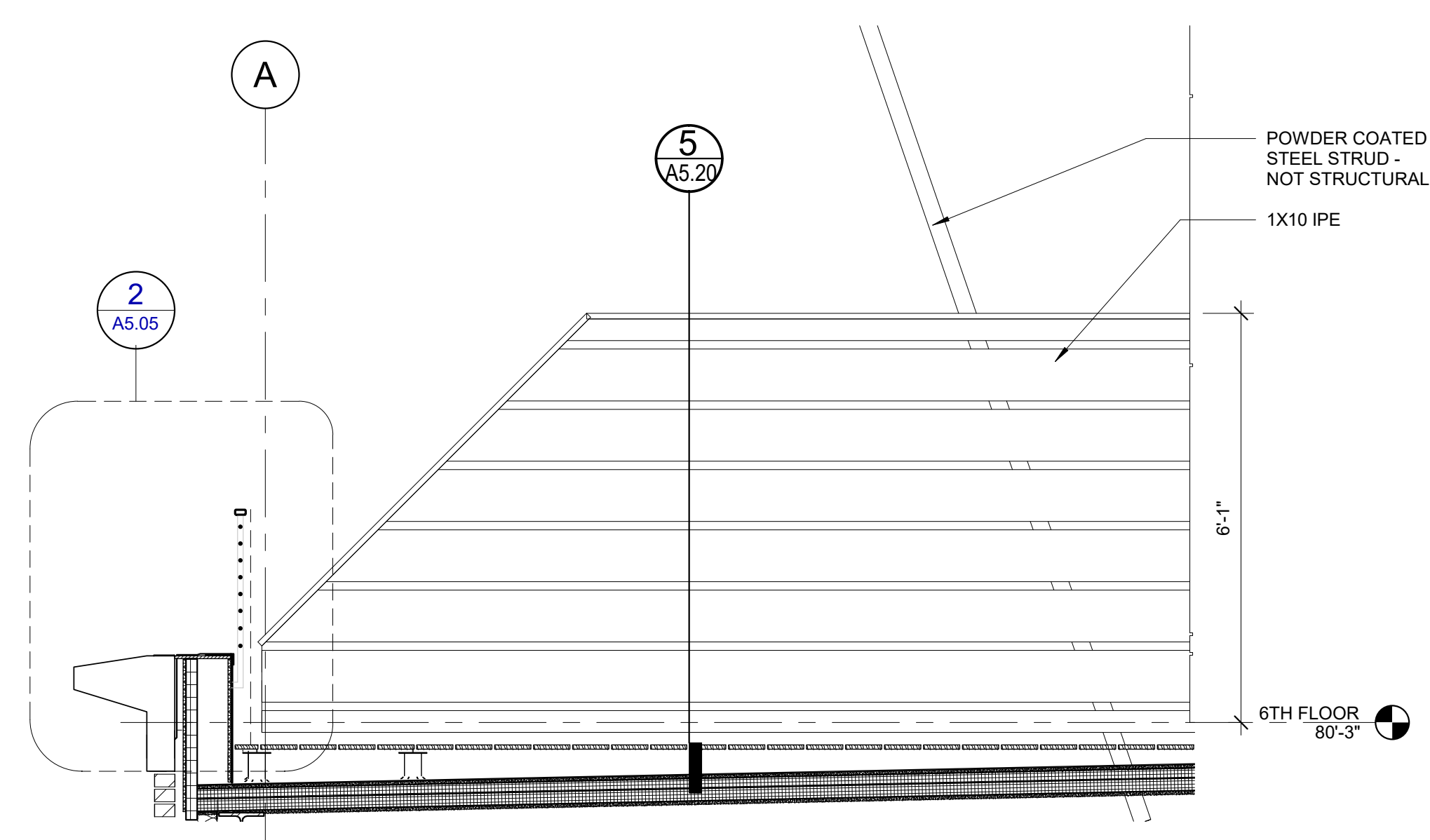
3 HR NON-COMBUSTIBLE COLUMN PROTECTION SYSTEM
 DESIGN NUMBER - UL X510



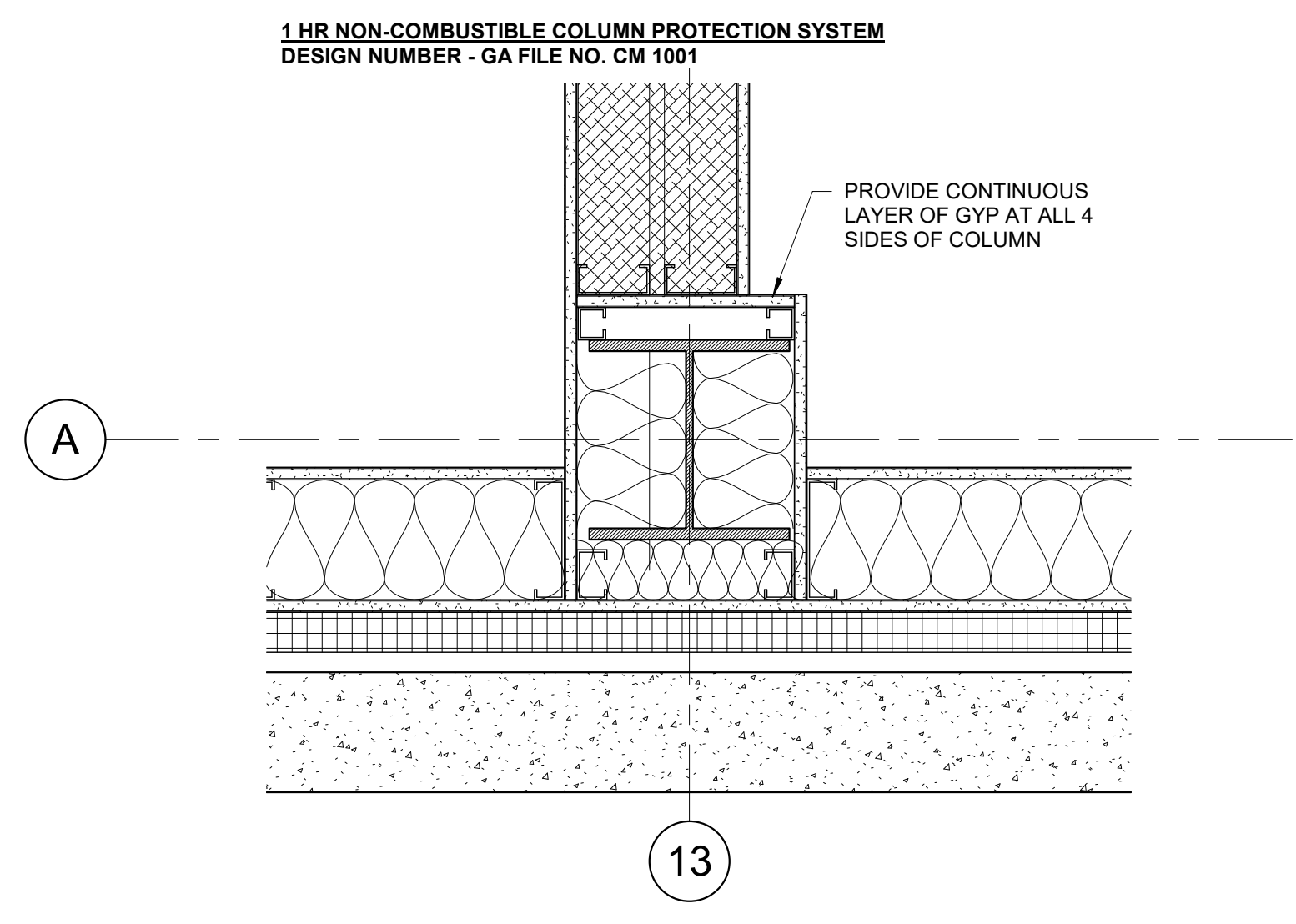
GENERAL NOTE: THE ENTIRE COLUMN SHALL BE PROVIDED INDIVIDUAL ENCASEMENT PROTECTION BY PROTECTING IT ON ALL SIDES FOR THE FULL COLUMN LENGTH, INCLUDING CONNECTIONS TO OTHER STRUCTURAL MEMBERS, WITH MATERIALS HAVING REQUIRED FIRE RESISTANCE RATING. WHERE THE COLUMN EXTENDS THROUGH A CEILING, THE ENCASEMENT PROTECTION SHALL BE CONTINUOUS FROM THE TOP OF THE FOUNDATION THROUGH THE CEILING SPACE TO THE TOP OF THE COLUMN

COLUMN ENCASED IN CONCRETE TO 5'-0" ABOVE SLAB AT FIRST FLOOR ONLY (SEE STRUCTURAL)
 THREE LAYERS OF 5/8" GYPSUM FROM TOP OF CONCRETE TO UNDERSIDE OF DECK ABOVE

1 | 3HR RATED WIDE FLANGE COLUMN ENCLOSURE
 1 1/2" = 1'-0"



4 | IPE DECK SCREEN ELEVATION
 1/2" = 1'-0"



8 | COLUMN WRAP AT 2ND FLOOR EXT. WALL
 1 1/2" = 1'-0"