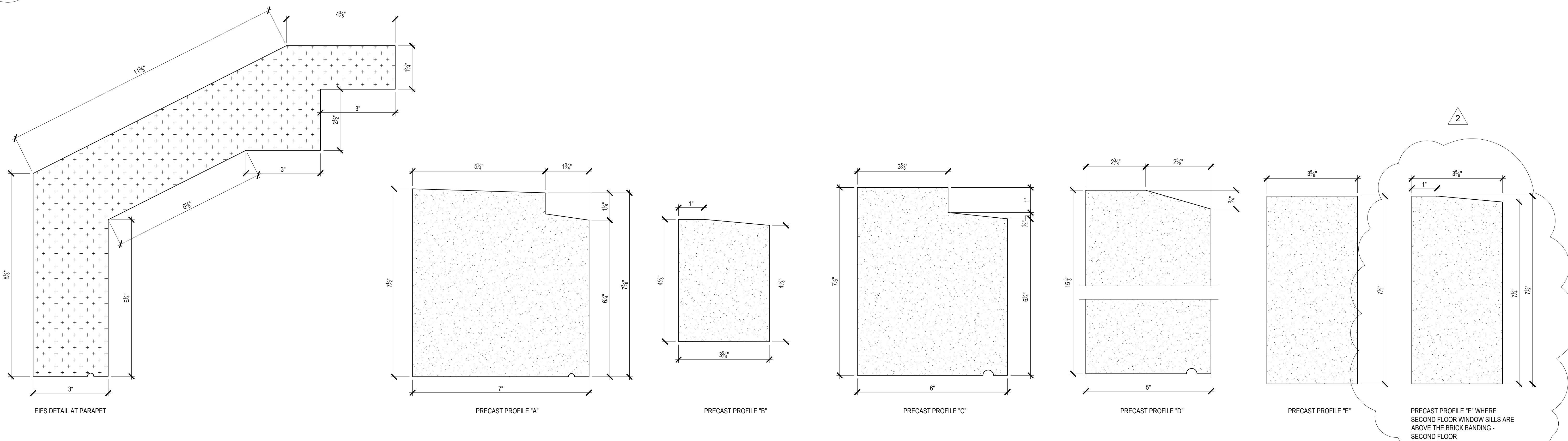
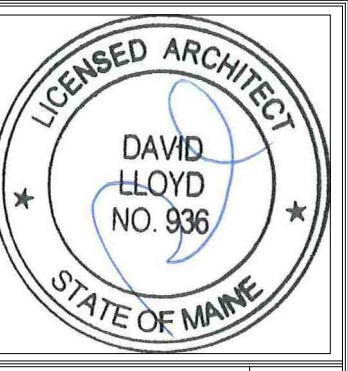


3 PRECAST SILL SECTION AT SCREENED AREAS
6" = 1'-0"

2 TYPICAL BRICK COURSING AT FOUNDATION SHELF
3" = 1'-0"



1 EIFS AND PRECAST CONCRETE PROFILES
6" = 1'-0"



Prepared For:
**EssexNorth
Portland LLC**
P.O. Box 394
Topsheld, MA 01083

Consultant:
ENVELOPE
ARCHITECTURE & CONSULTING
BUILDING ENVELOPE DESIGN
CONSULTING, INVESTIGATION AND
COMMISSIONING - WINDHAM, ME
207-807-6661

Architect:
ARCHETYPE
architects
48 Union Wharf Portland, Maine 04101
(207) 772-6022 ARCHETYPE@ARCHETYPEPA.COM

Project:
**THAMES STREET
BUILDING**
20 Thames Street, Portland Maine

Revisions:
July 21, 2017 Final Bid Set
August 15, 2017 Addendum 2

Date: July 21, 2017
Scale: As indicated

DETAILS

A5.08