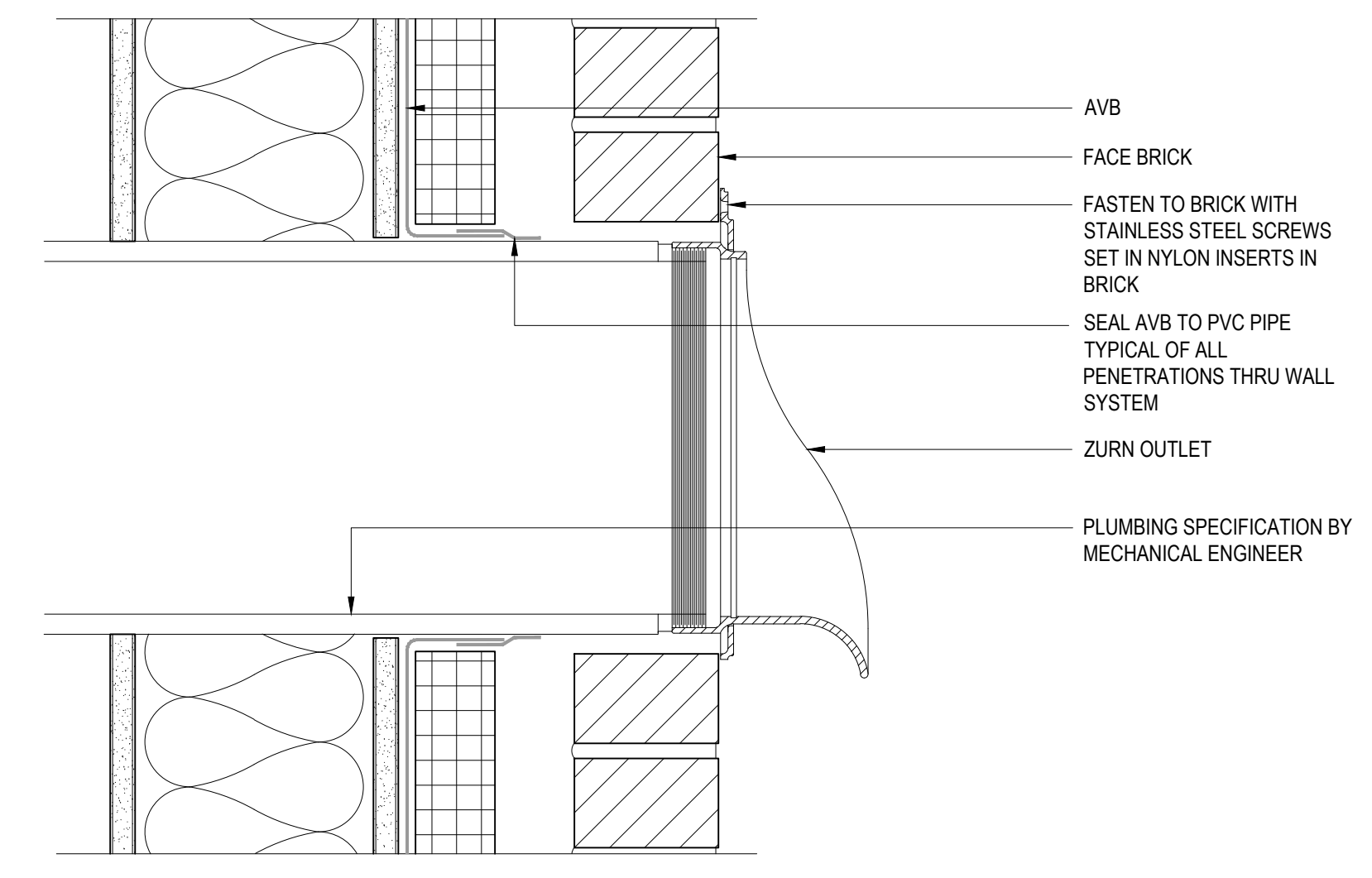


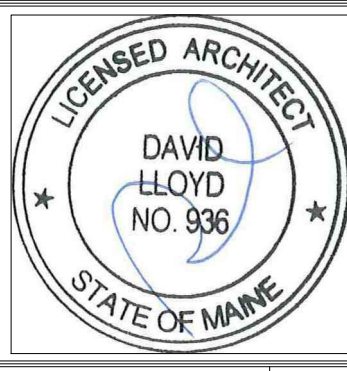
2 BALCONY PARAPET DETAIL SECTION  
3" = 1'-0"



3 OVERFLOW DRAIN EXIT DETAIL  
3" = 1'-0"

ELIMINATED AS PART OF  
ADDENDUM 2

1 ROOF DECK CURB DETAIL  
3" = 1'-0"



Prepared For:  
**EssexNorth  
Portland LLC**  
P.O. Box 394  
Topsheld, MA 01093

Consultant:  
**ENVELOPE**  
ARCHITECTURE & CONSULTING  
BUILDING ENVELOPE DESIGN AND  
CONSULTING, INVESTIGATION AND  
COMMISSIONING - WINDHAM, ME  
207-807-6661

Architect:  
**ARCHETYPE**  
architects  
48 Union Wharf Portland, Maine 04101  
(207) 772-6022 ARCHETYPE@ARCHETYPEPA.COM

Project:  
**THAMES STREET  
BUILDING**  
20 Thames Street, Portland Maine

Revisions:  
July 21, 2017 Final Bid Set  
August 13, 2017 Addendum 2  
October 11, 2017 Addendum 3

Date: July 21, 2017  
Scale: As indicated  
**DETAILS**

**A5.05**