

Prepared For:  
**EssexNorth  
 Portland LLC**  
 P.O. Box 394  
 Topsheld, MA 01093

Consultant:  
**ENVELOPE**  
 ARCHITECTURE & CONSULTING  
 BUILDING ENVELOPE DESIGN  
 CONSULTING, INVESTIGATION AND  
 COMMISSIONING - WINDHAM, ME  
 207-807-6661

Architect:  
**ARCHETYPE**  
 architects  
 48 Union Wharf Portland, Maine 04101  
 (207) 772-6022 ARCHETYPE@ARCHETYPEPA.COM

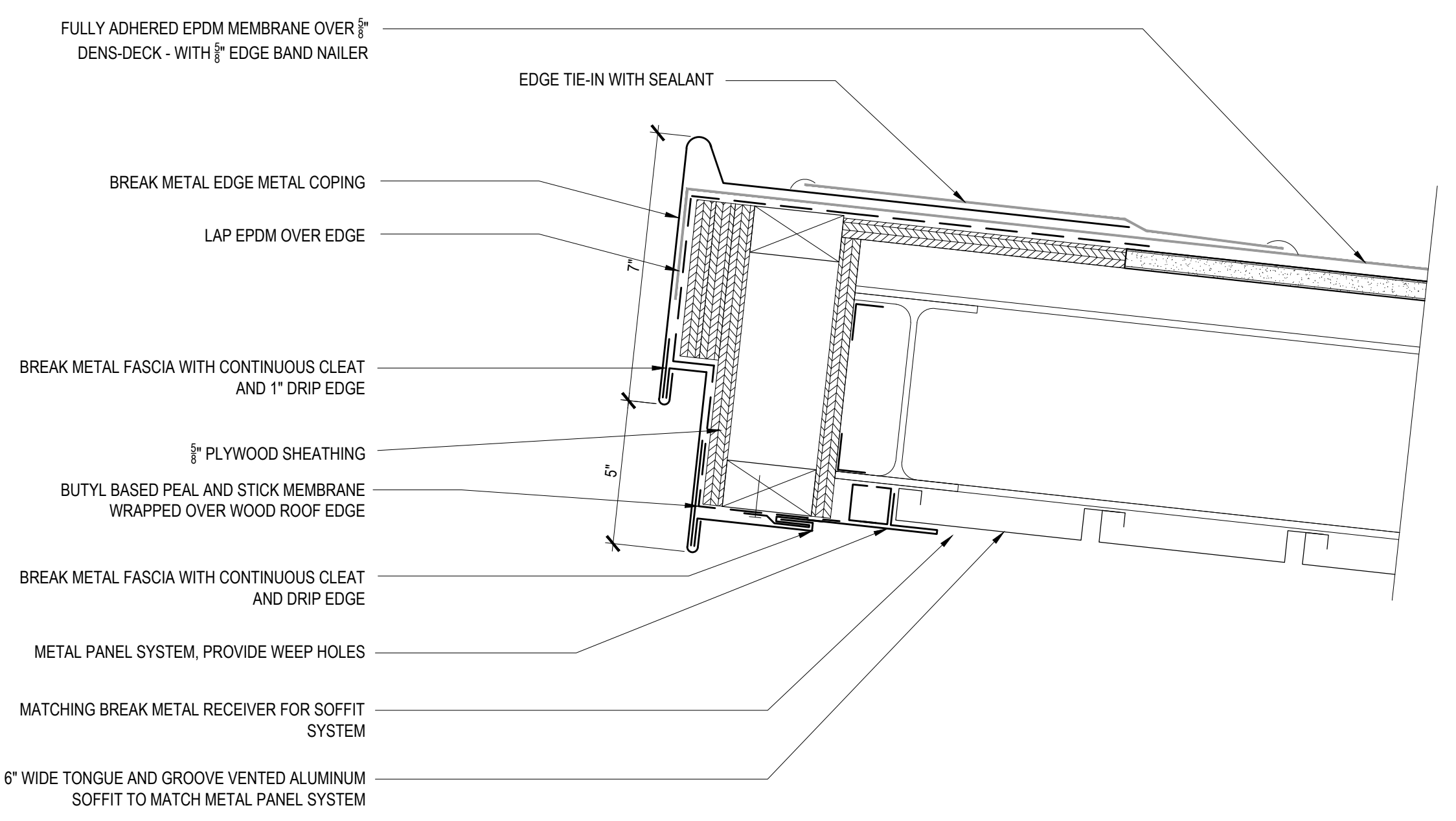
Project:  
**THAMES STREET  
 BUILDING**  
 20 Thames Street, Portland Maine

Revisions:  
 July 21, 2017 Final Bid Set  
 August 15, 2017 Addendum 2

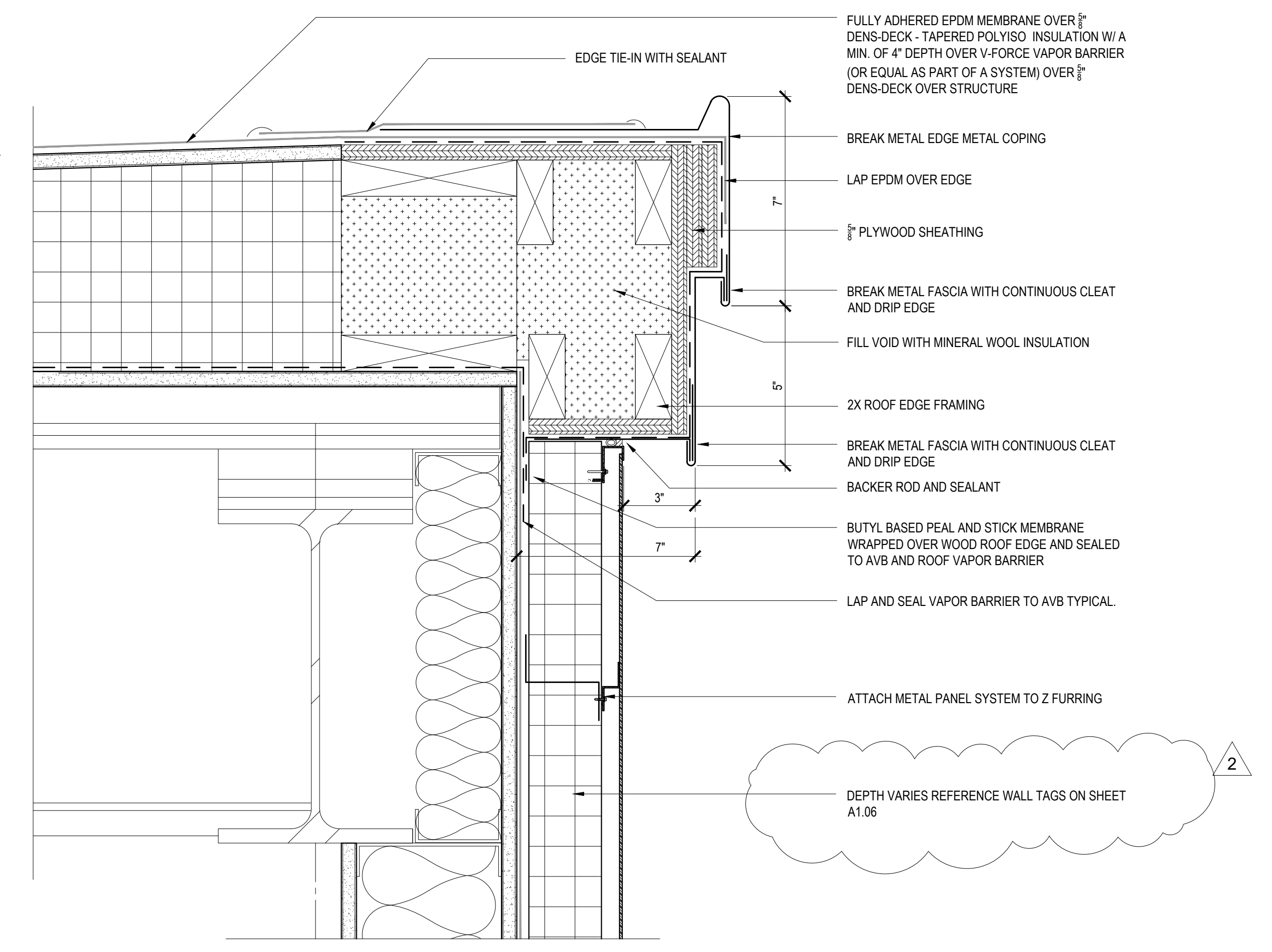
Date: July 21, 2017  
 Scale: As indicated

**DETAILS**

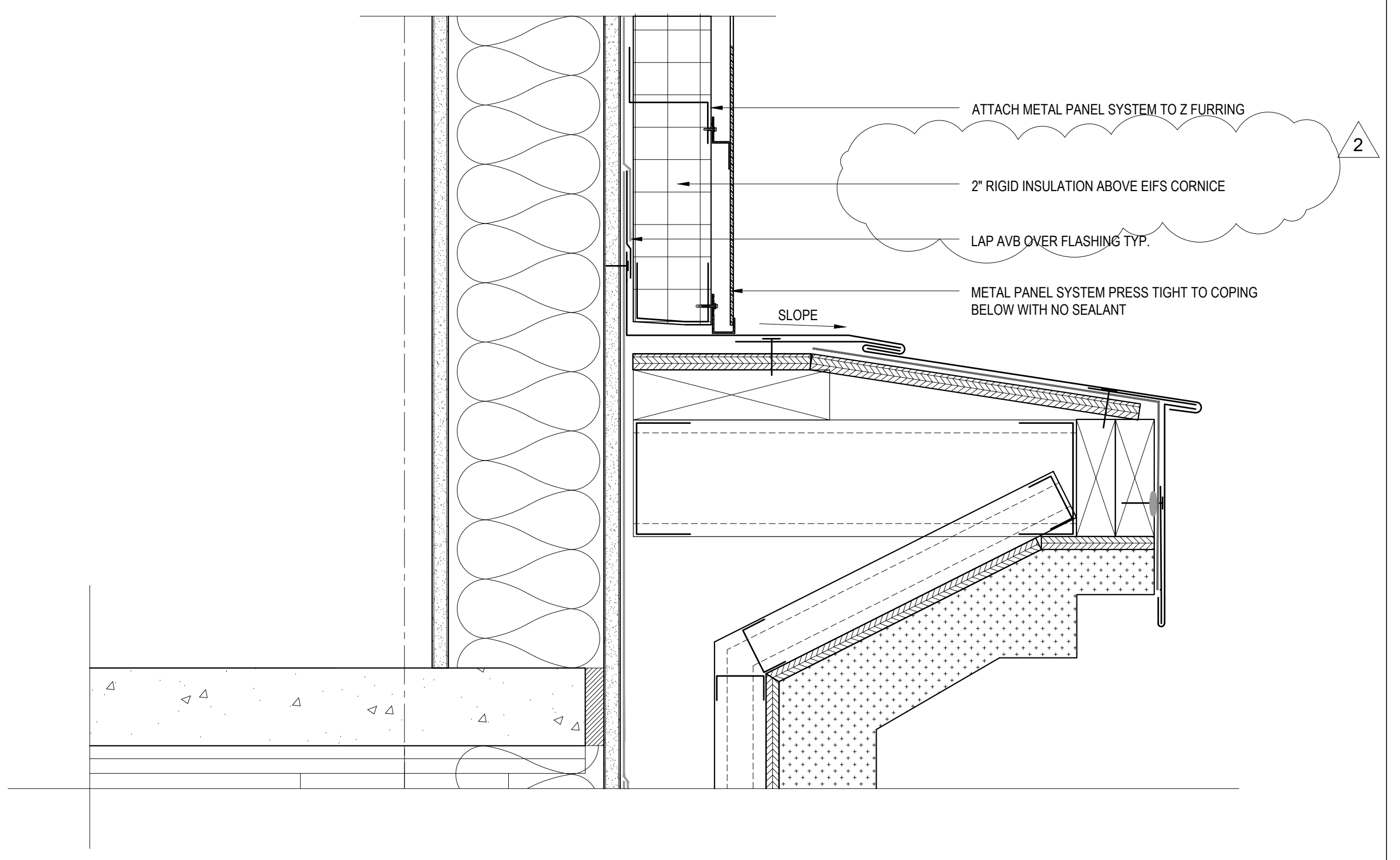
**A5.04**



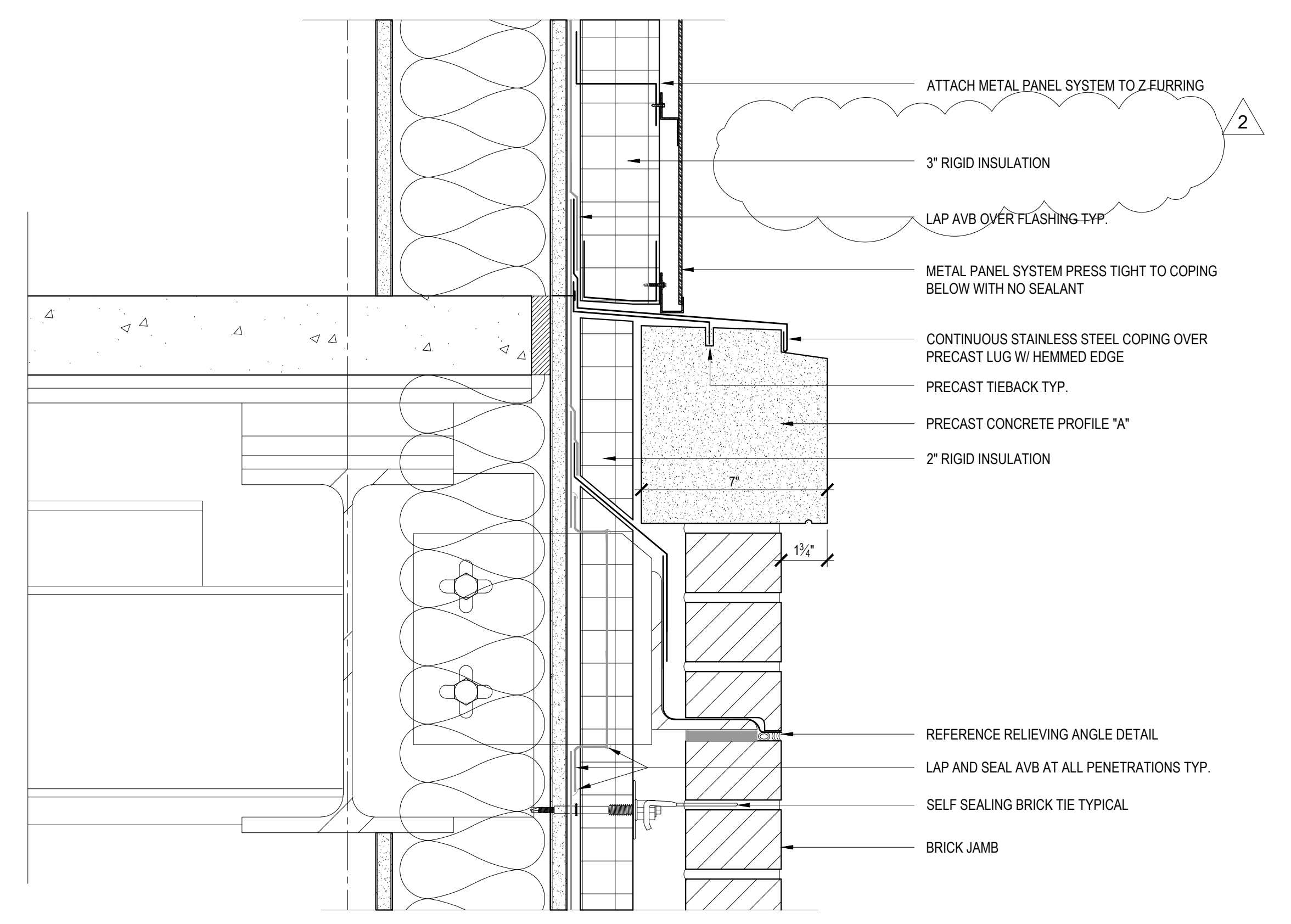
**4 MAIN ROOF CANOPY DETAIL - RAKE DETAIL SIMILAR**  
 3" = 1'-0"



**3 ROOF EDGE**  
 3" = 1'-0"



**2 HORIZONTAL TRANSITION FROM PARAPET TO METAL PANEL AT EIFS**  
 3" = 1'-0"



**1 HORIZONTAL TRANSITION FROM BRICK TO METAL PANEL**  
 3" = 1'-0"