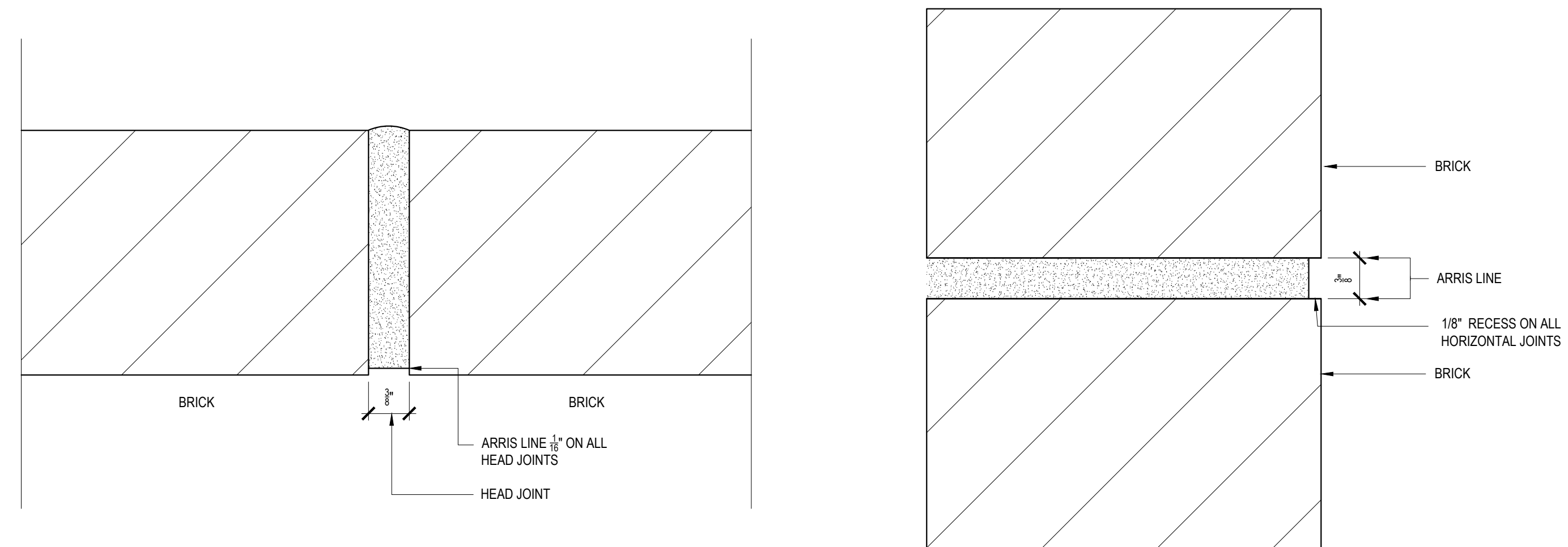
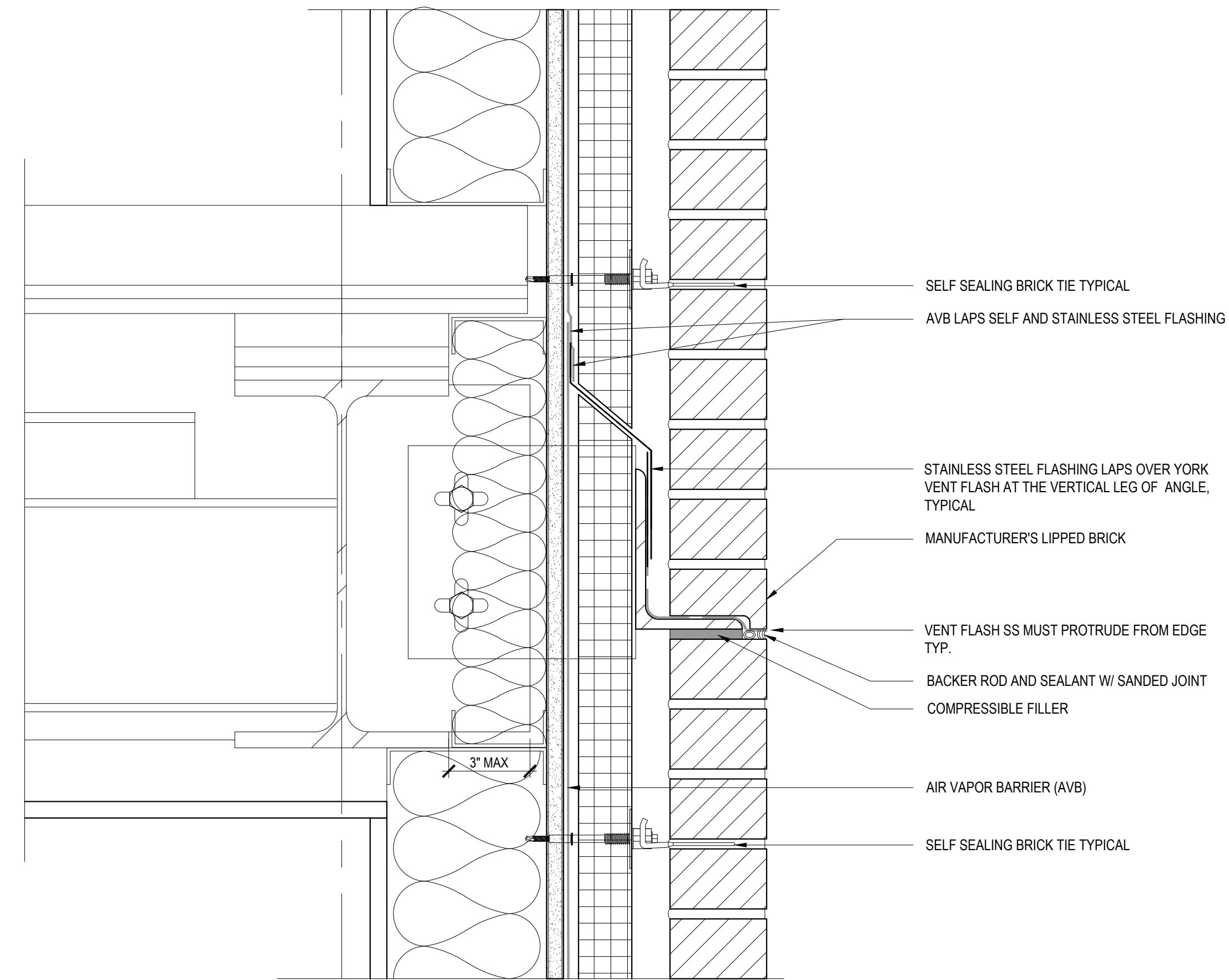


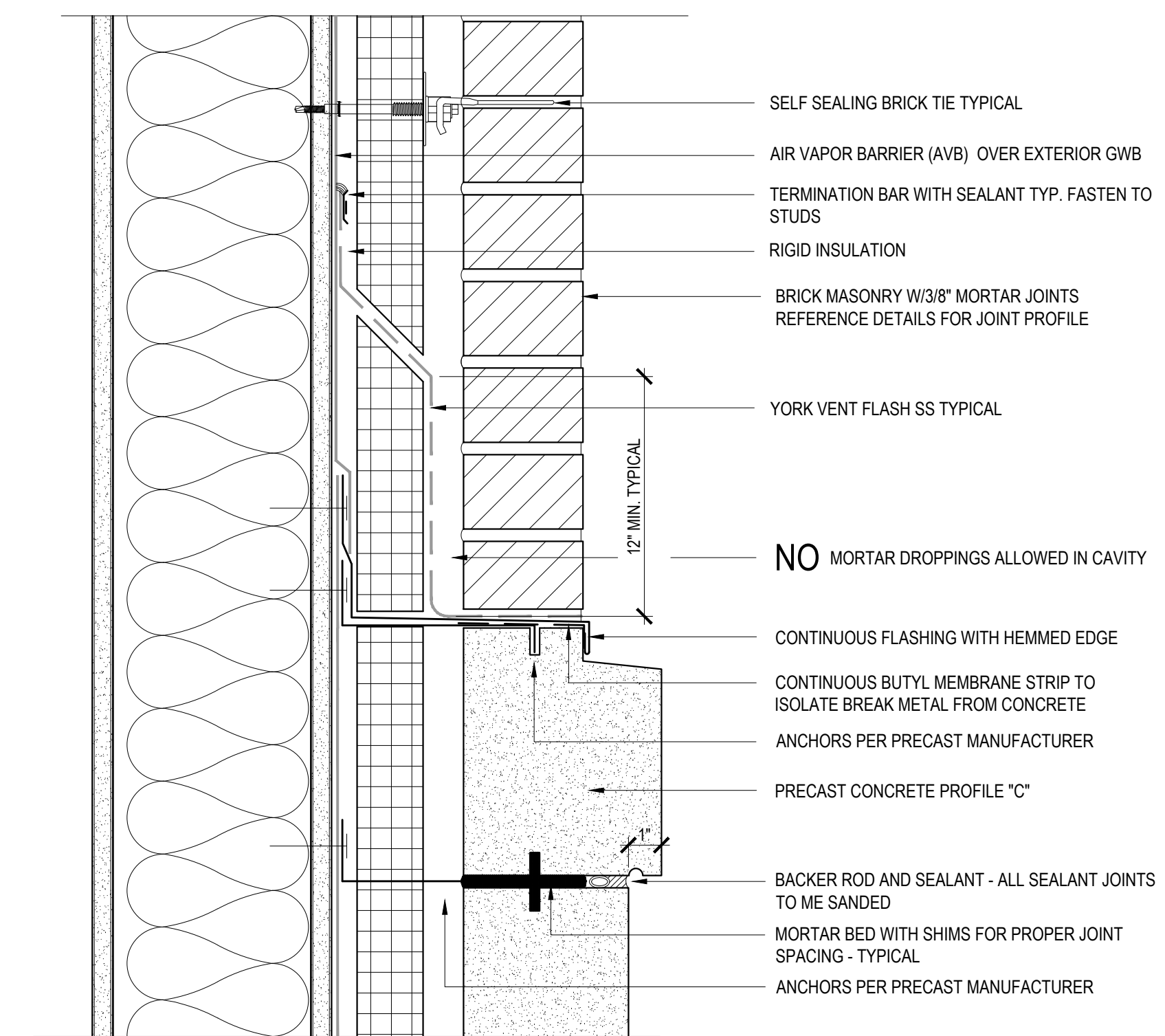
6 CONTROL JOINT DETAIL
1:1



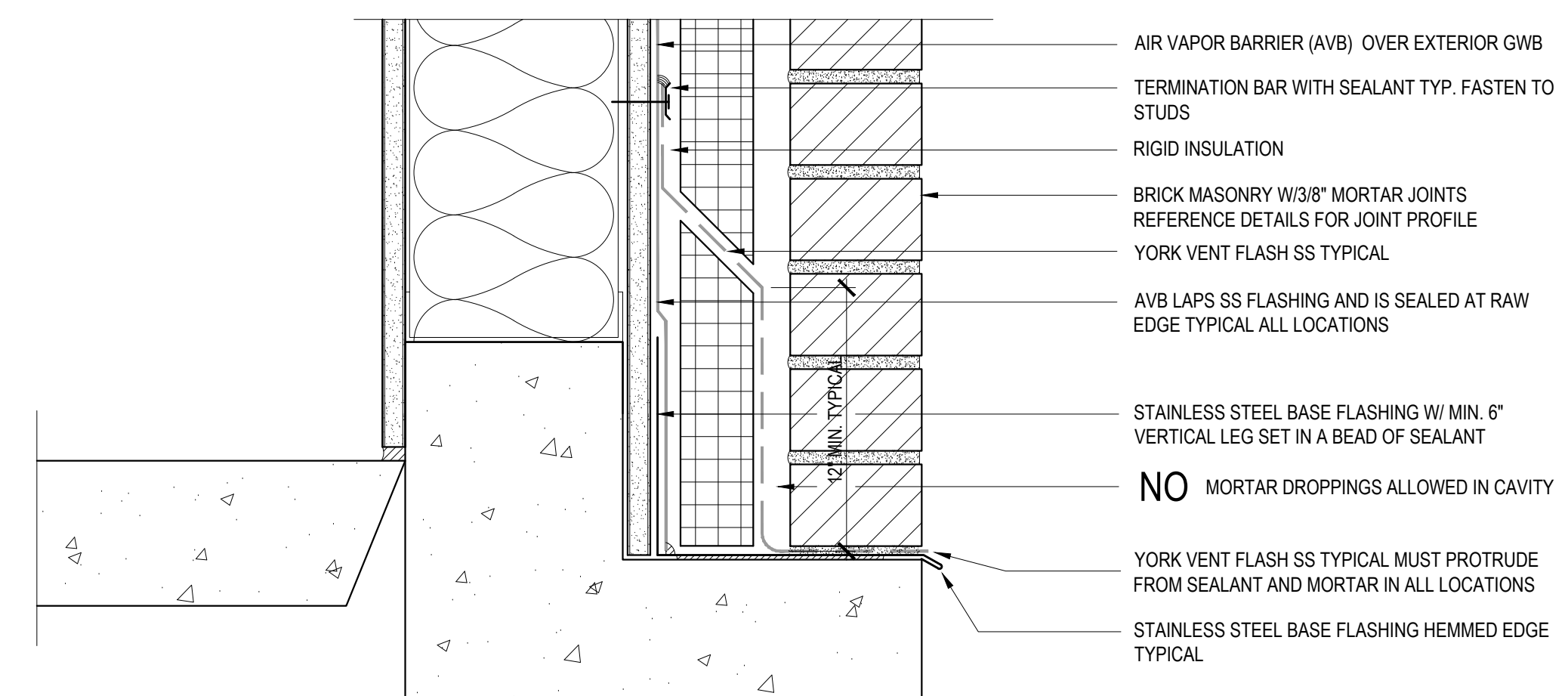
5 ARRIS LINE REQUIREMENTS
1:1



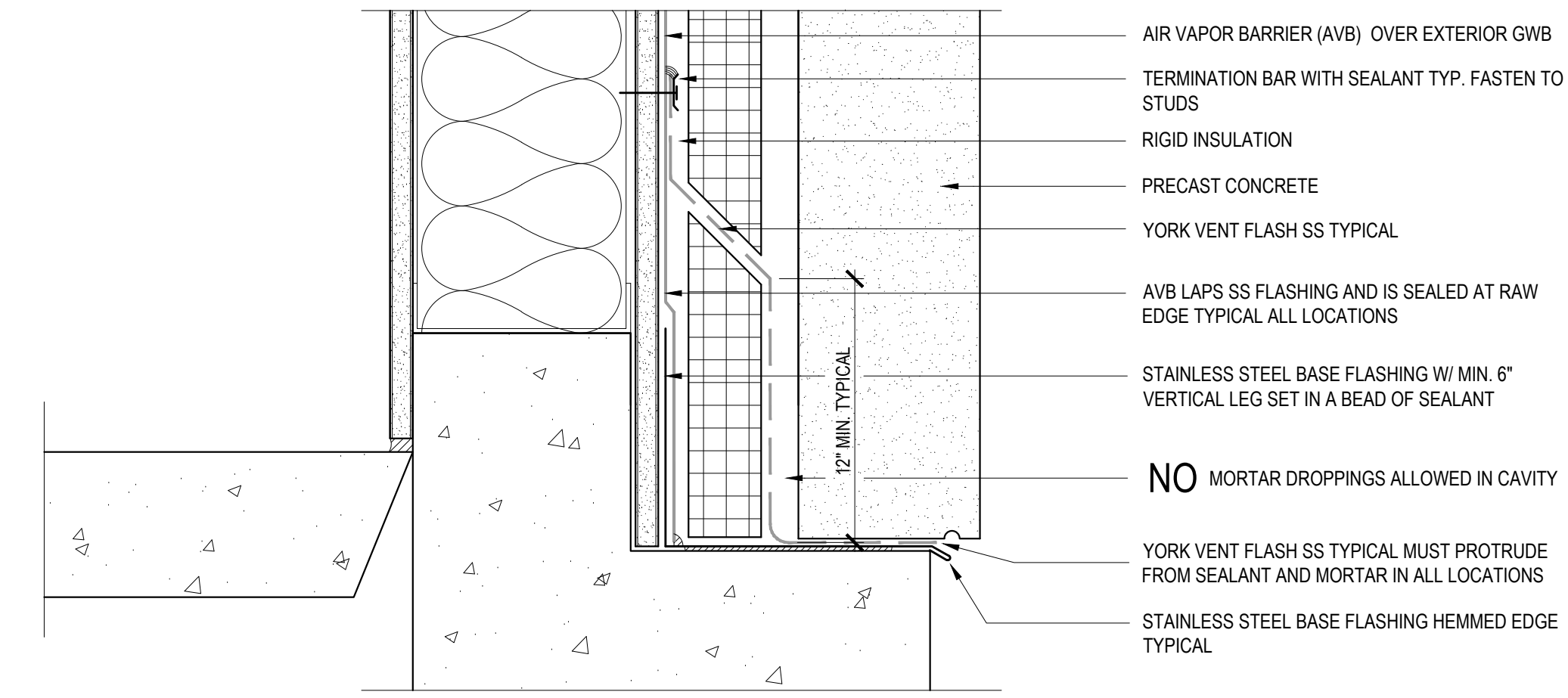
4 TYPICAL RELIEVING ANGLE DETAIL
3" = 1'-0"



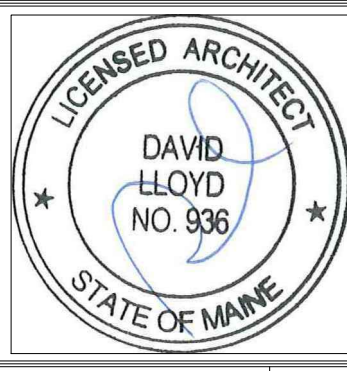
3 TYPICAL BRICK TO PRECAST CONDITION
3" = 1'-0"



2 WALL BASE SHELF AT BRICK
3" = 1'-0"



1 WALL BASE SHELF AT PRECAST
3" = 1'-0"



Prepared For:
**EssexNorth
Portland LLC**
P.O. Box 394
Topsheld, MA 01093

Consultant:
ENVELOPE
ARCHITECTURE & CONSULTING
BUILDING ENVELOPE DESIGN AND
CONSULTING - INVESTIGATION AND
COMMISSIONING - WINDHAM, ME
207-807-6661

Architect:
ARCHETYPE
architects
48 Union Wharf Portland, Maine 04101
(207) 772-6022 ARCHETYPE@ARCHETYPEPA.COM

Project:
**THAMES STREET
BUILDING**
20 Thames Street, Portland Maine

Revisions:
July 21, 2017 Final Bid Set
August 15, 2017 Addendum 2

Date: July 21, 2017
Scale: As indicated
DETAILS

A5.03