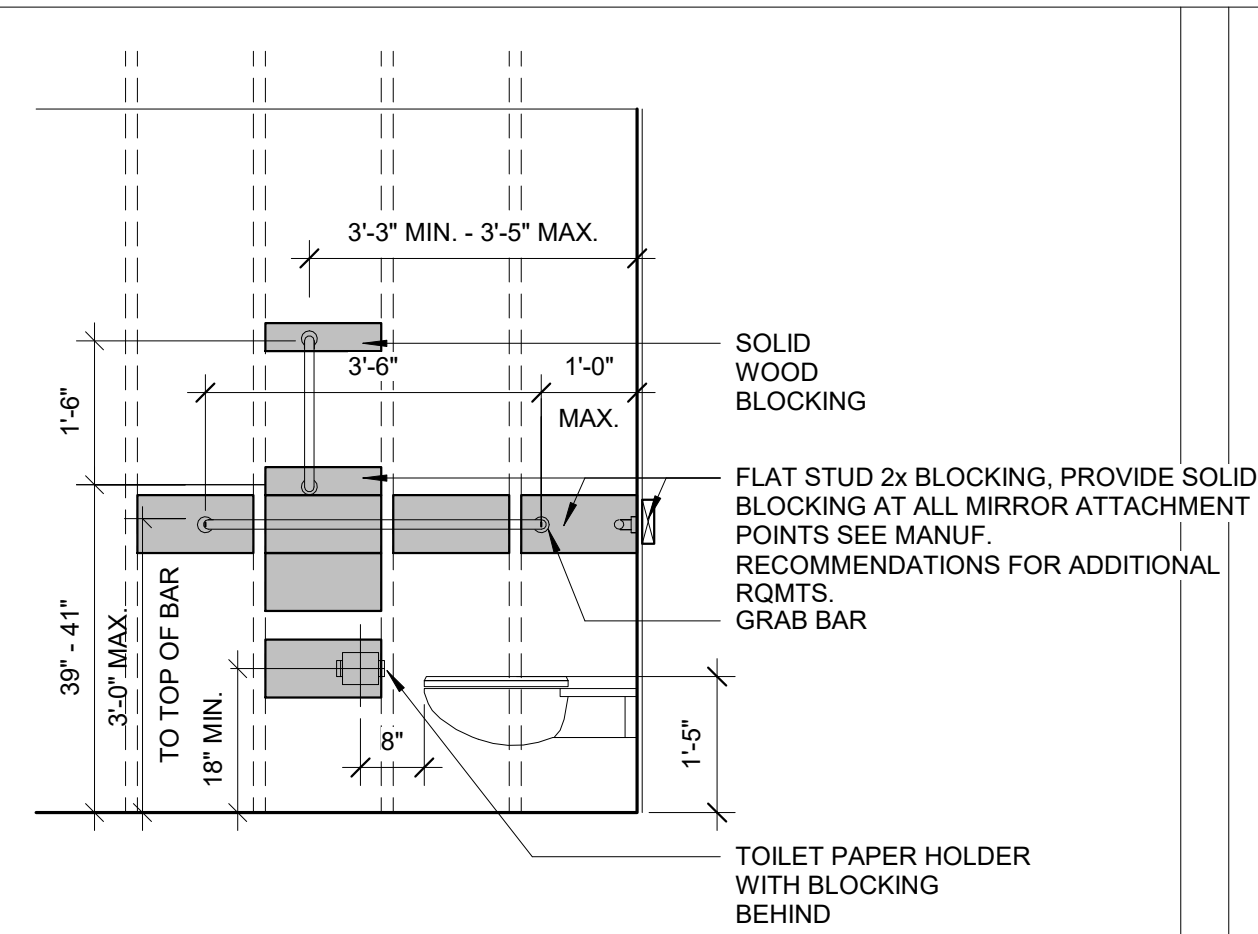
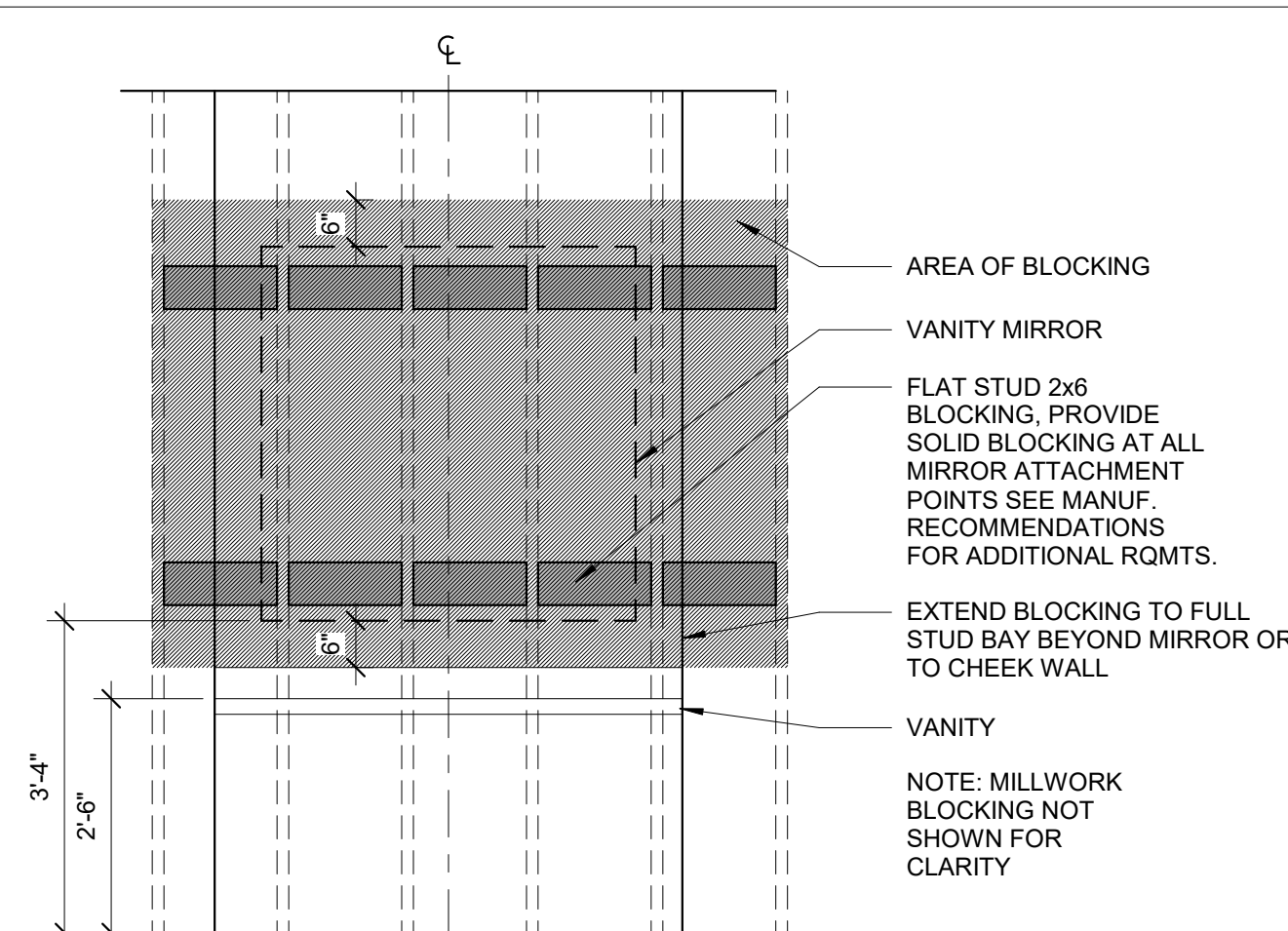


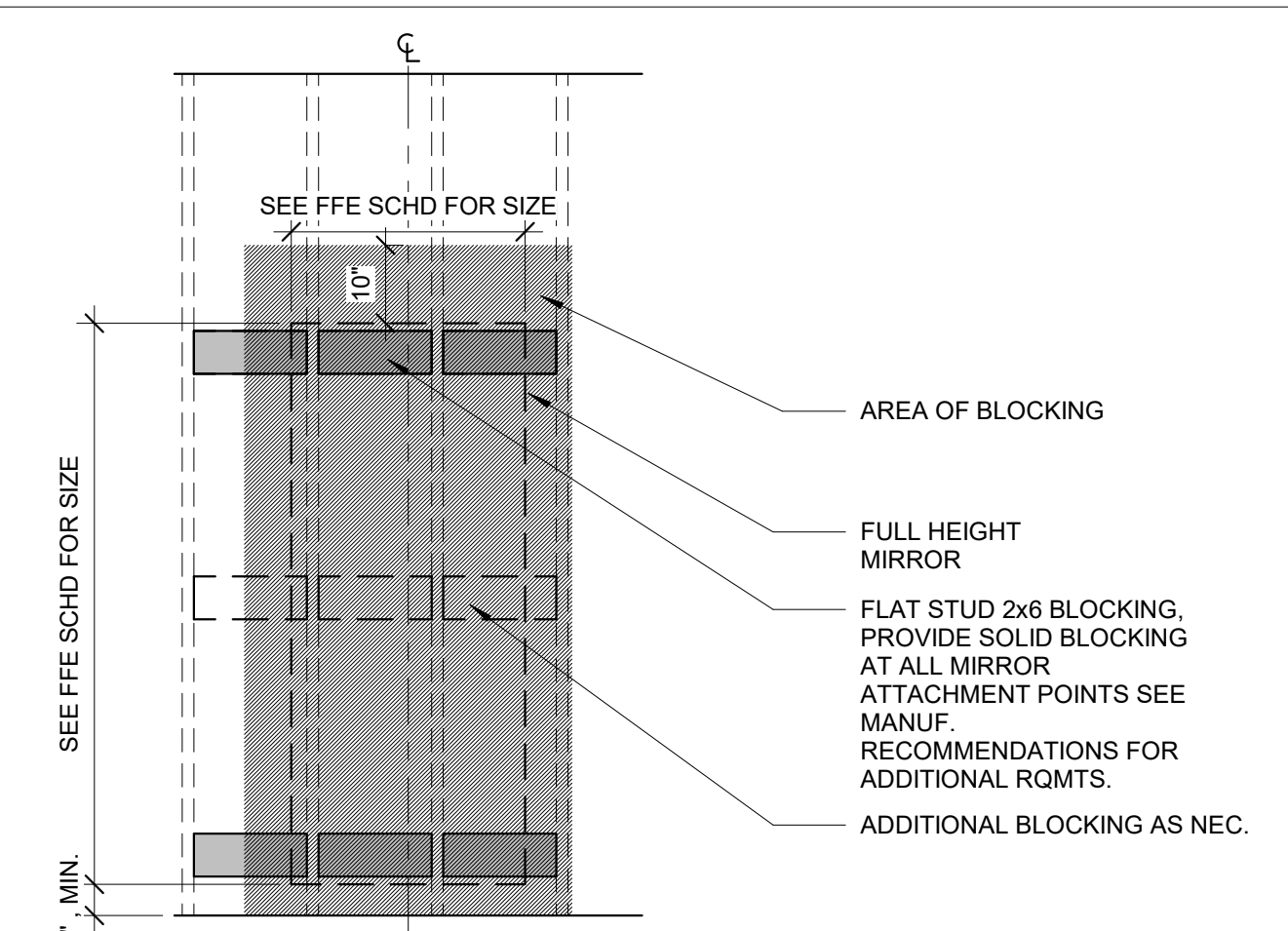
1 | BLOCKING DETAIL - WALL MOUNTED TV
1/2" = 1'-0"



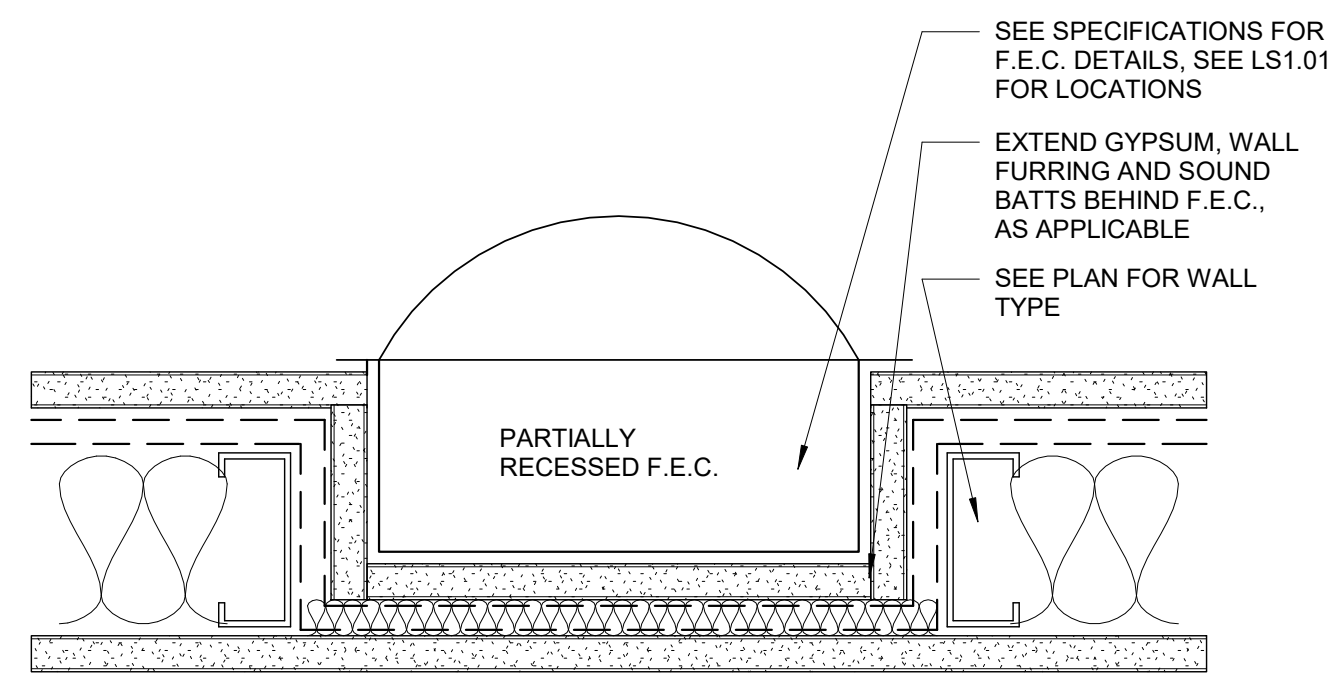
2 | BLOCKING DETAIL - TOILET
1/2" = 1'-0"



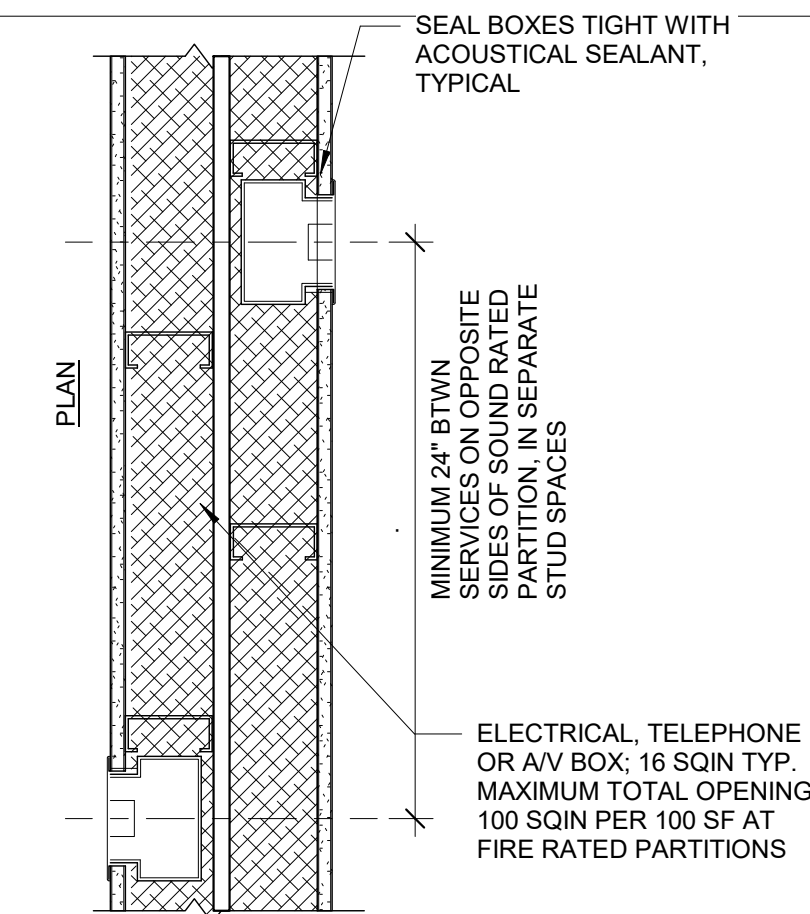
3 | BLOCKING DETAIL - VANITY MIRROR
1/2" = 1'-0"



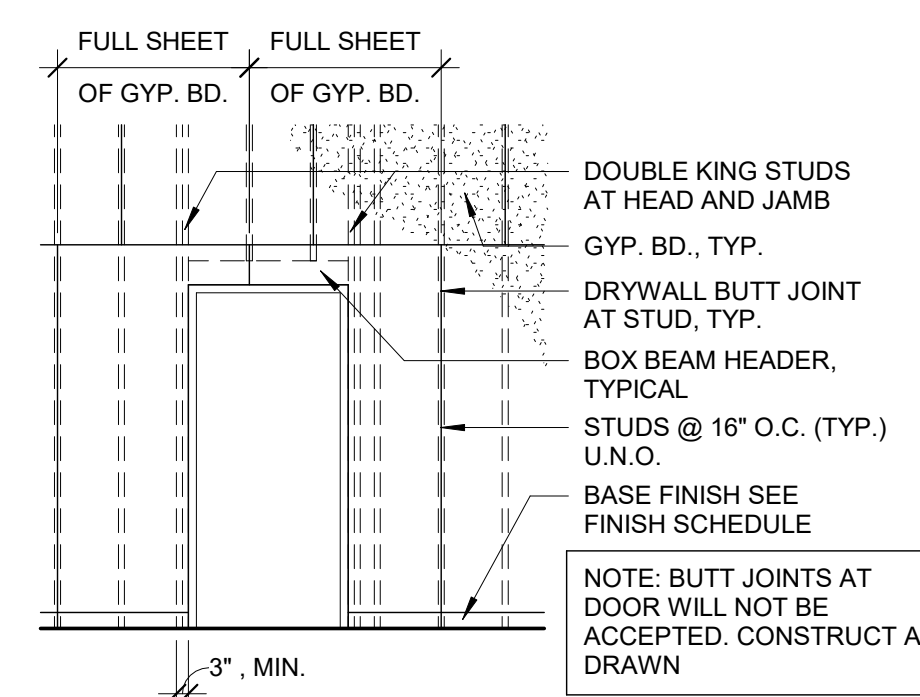
4 | BLOCKING DETAIL - FULL HEIGHT MIRROR
1/2" = 1'-0"



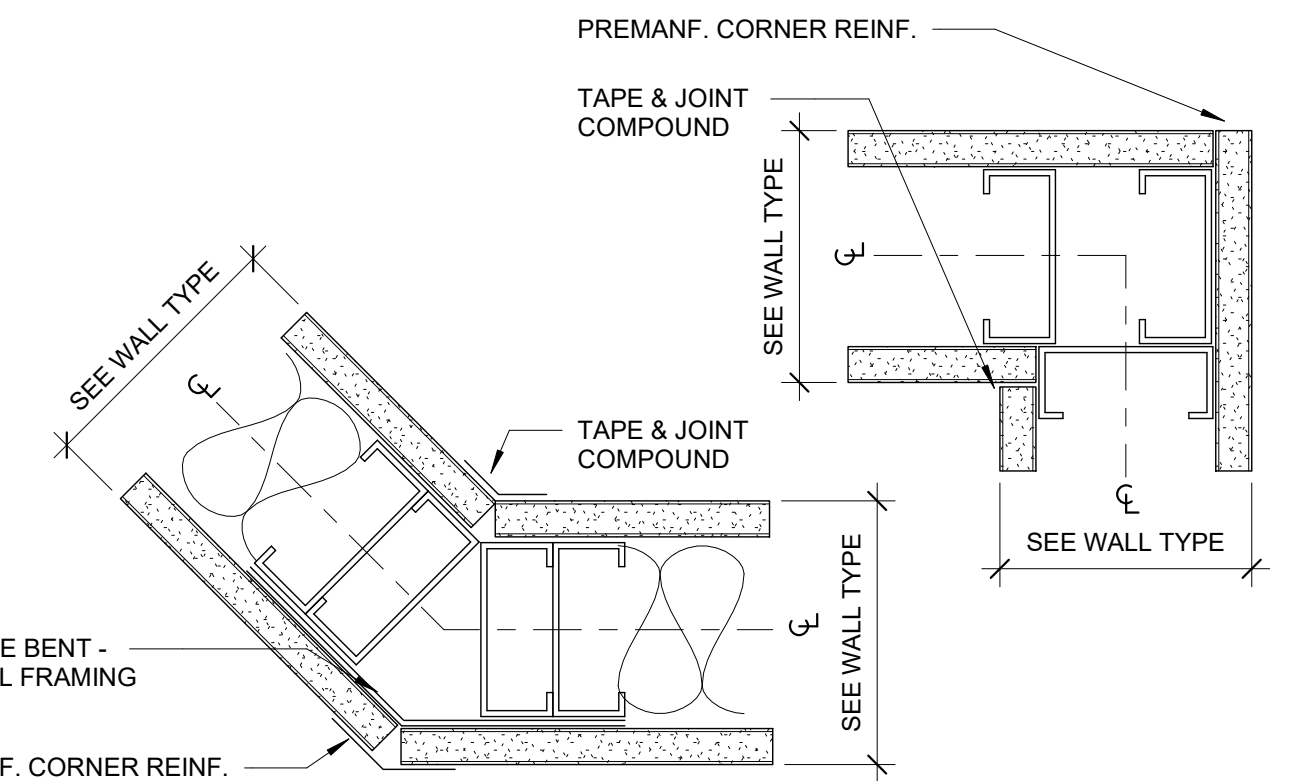
5 | RECESSED F.E.C. CABINET DETAIL
3" = 1'-0"



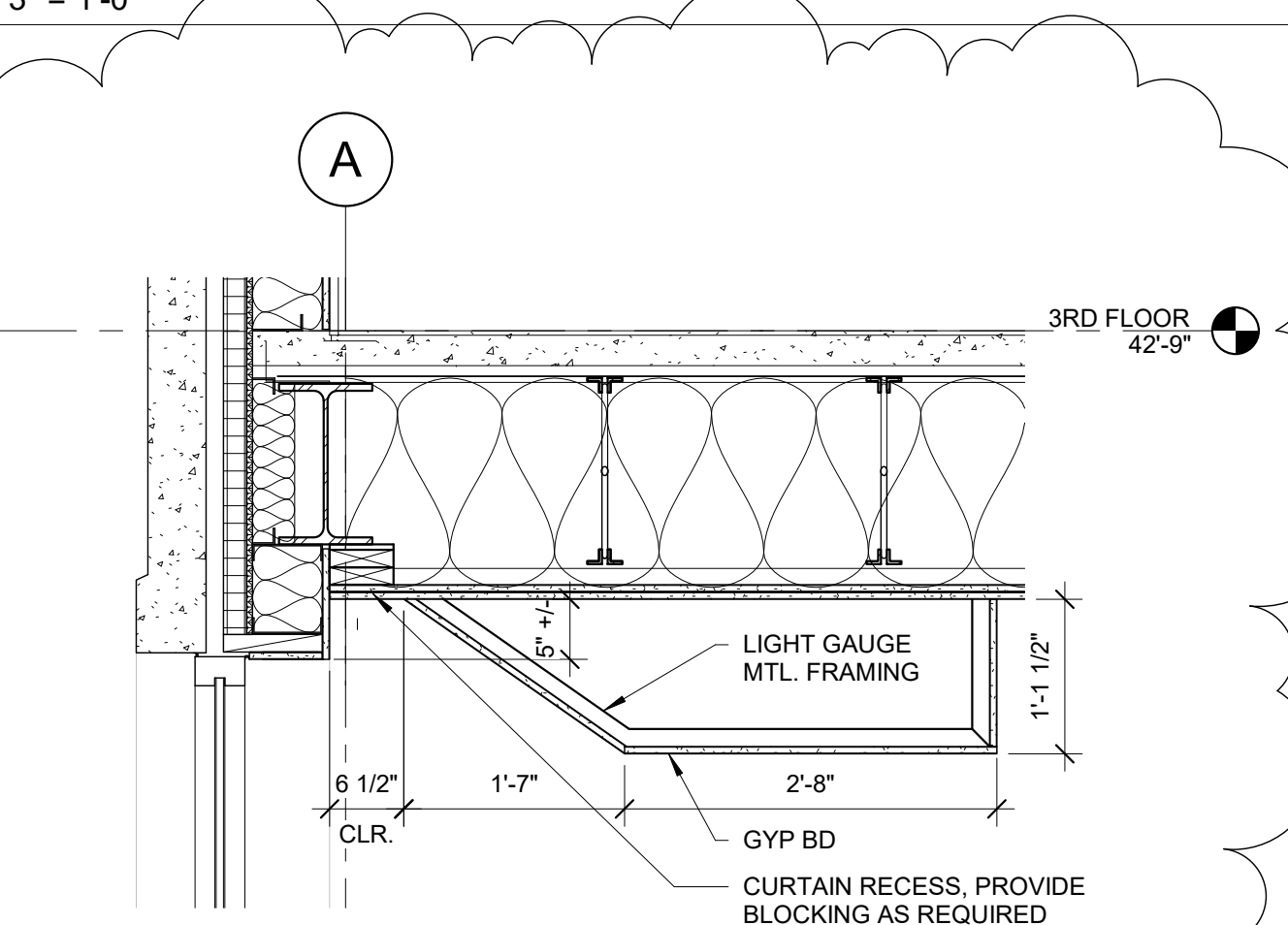
6 | PLAN DETAIL AT DEMISING WALL
1 1/2" = 1'-0"



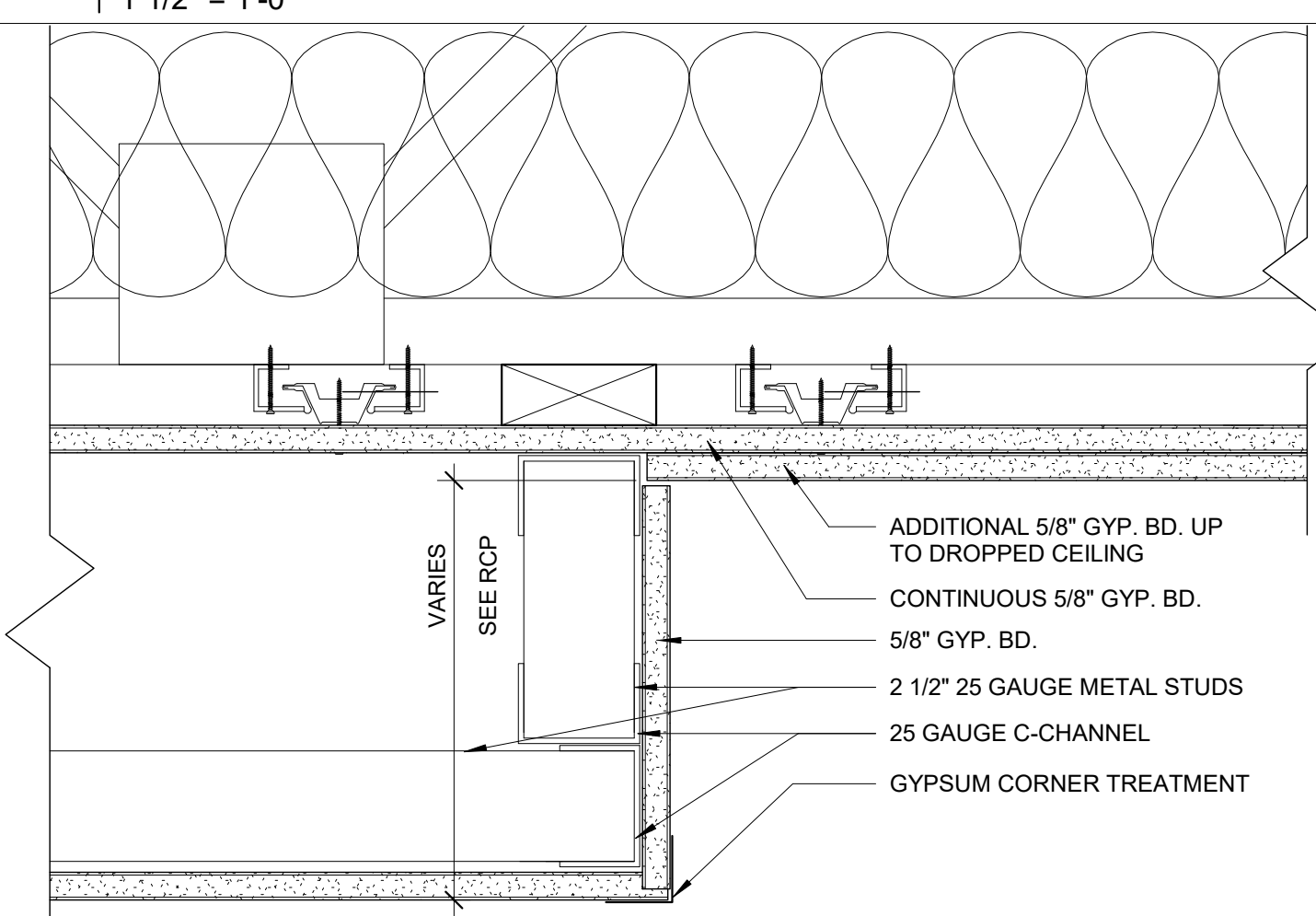
7 | PLAN DETAIL AT SOUND CRITICAL PARTITION
1/4" = 1'-0"



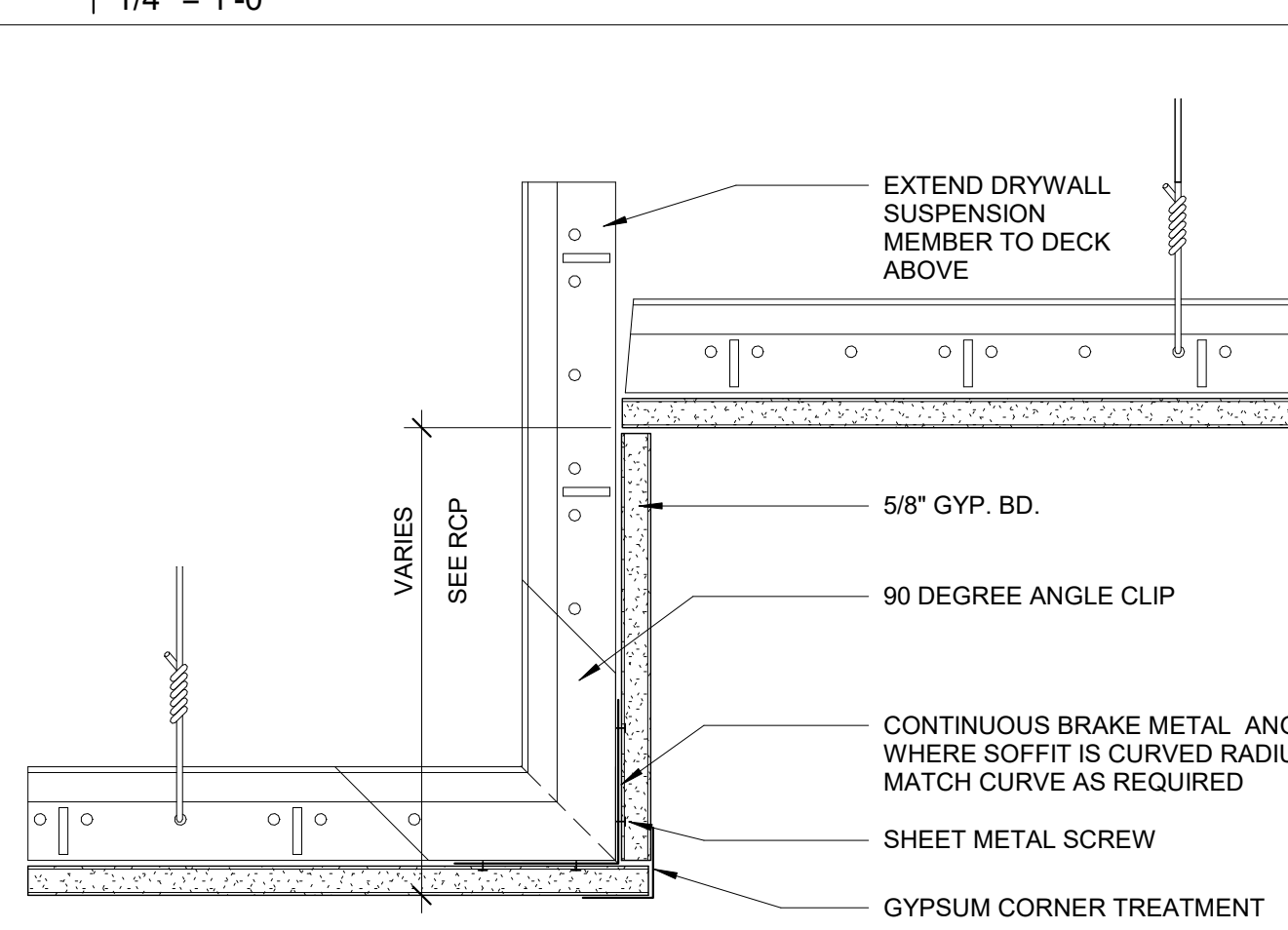
8 | TYPICAL CORNER DETAIL
3" = 1'-0"



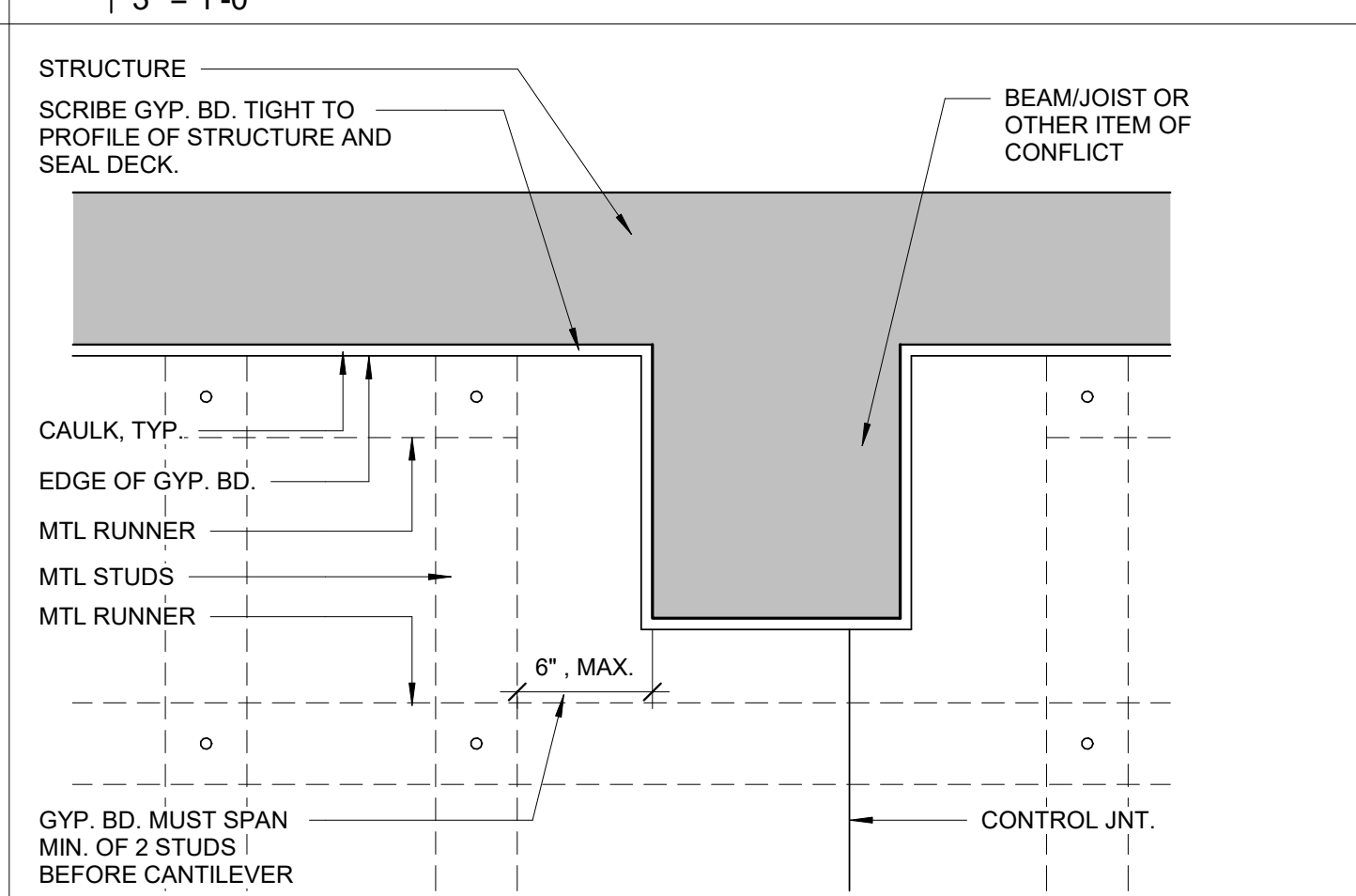
9 | MODIFIED SOFFIT DETAIL AT GLAZING
3/4" = 1'-0"



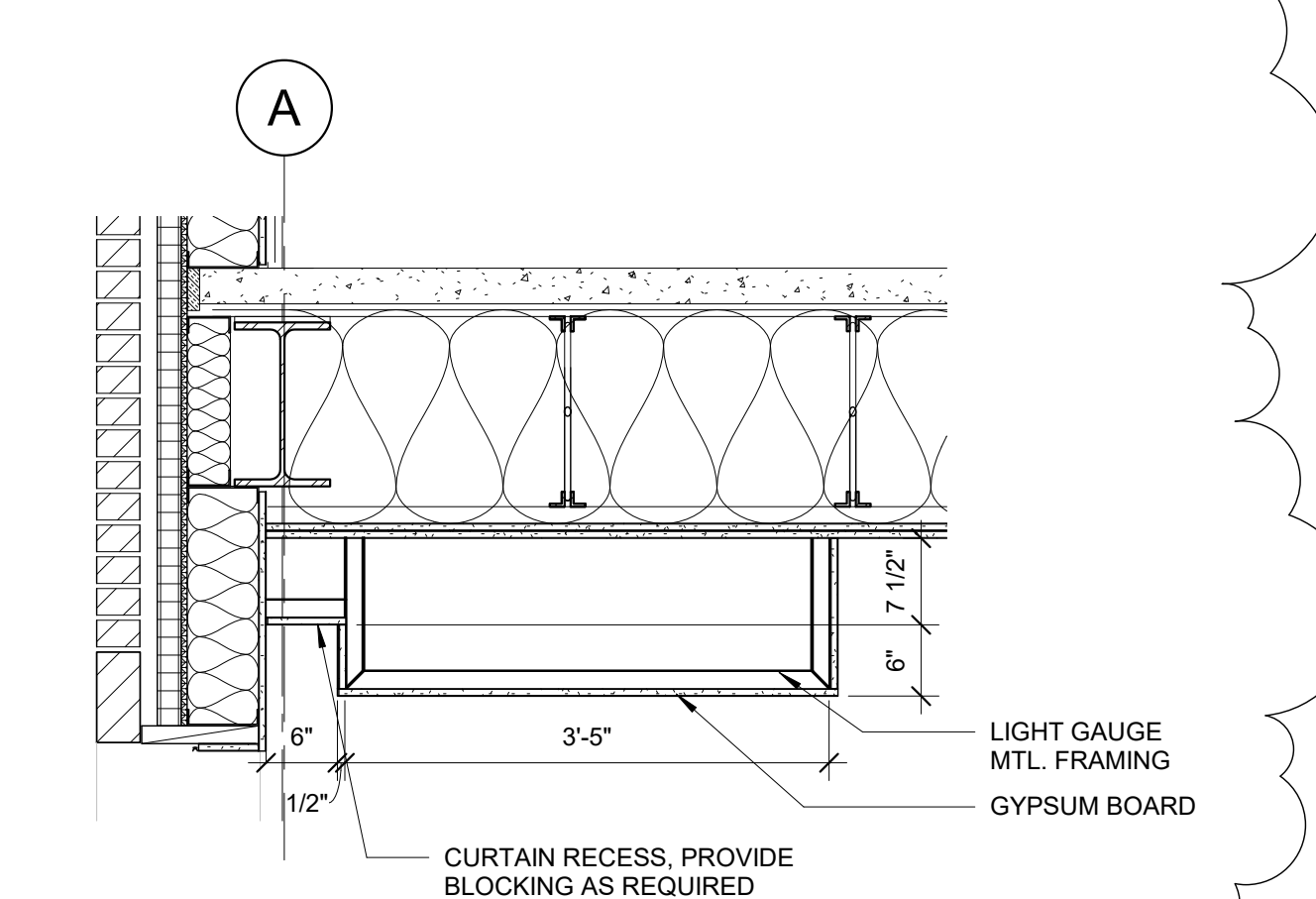
10 | BULKHEAD DETAIL
3" = 1'-0"



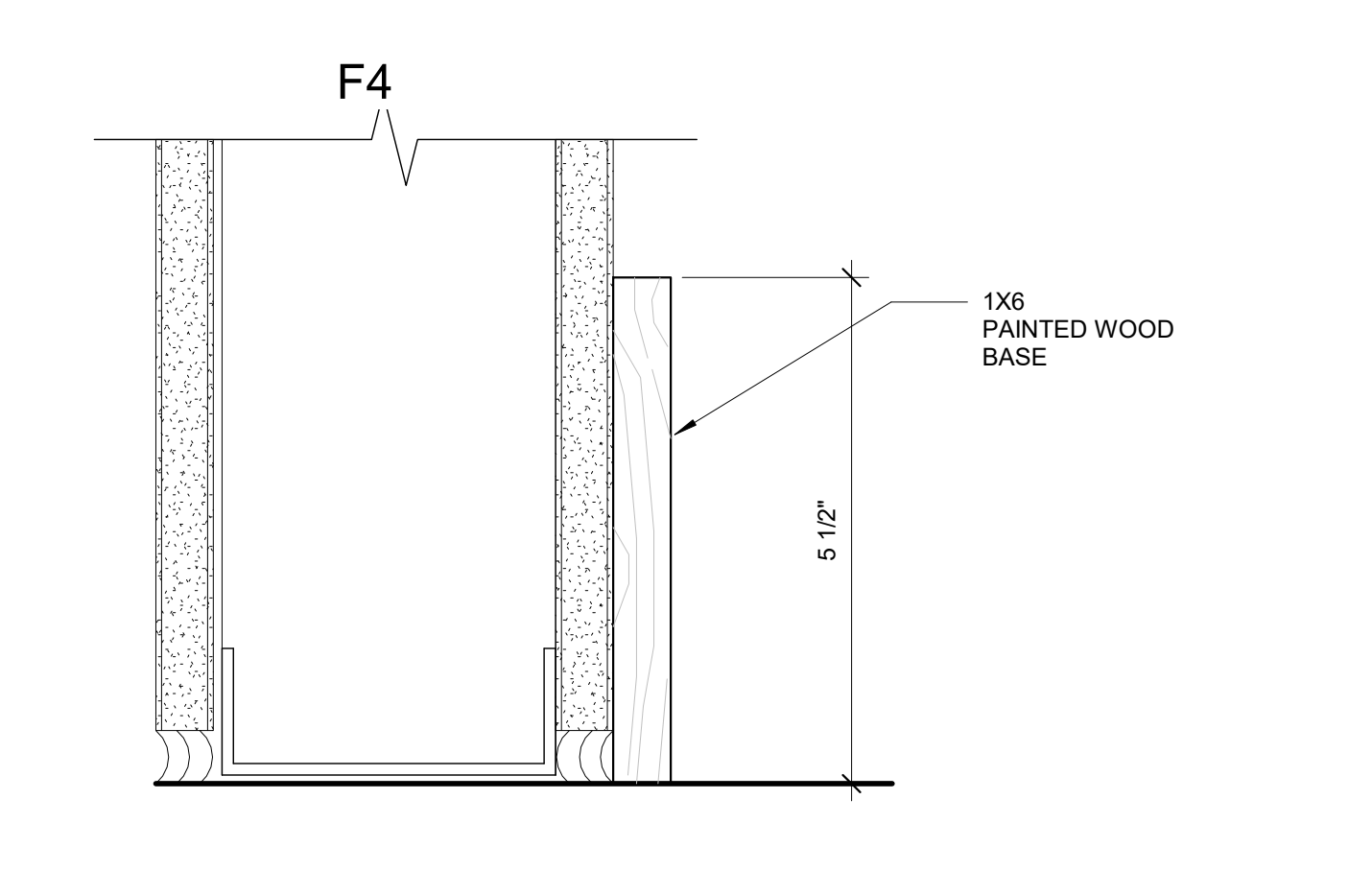
11 | GYP SOFFIT DETAIL
3" = 1'-0"



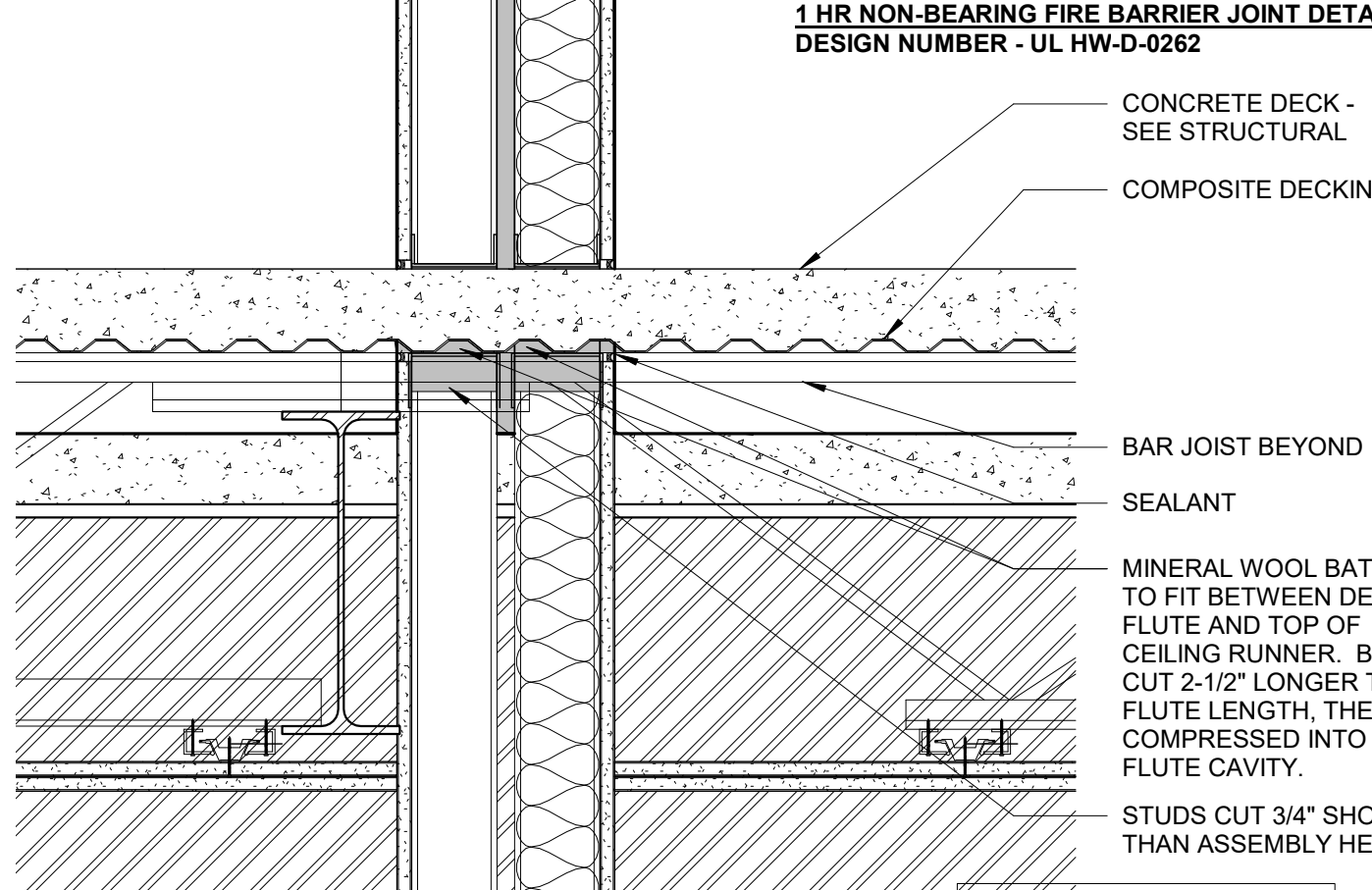
12 | PARTITION PERPENDICULAR TO OBSTRUCTION
1 1/2" = 1'-0"



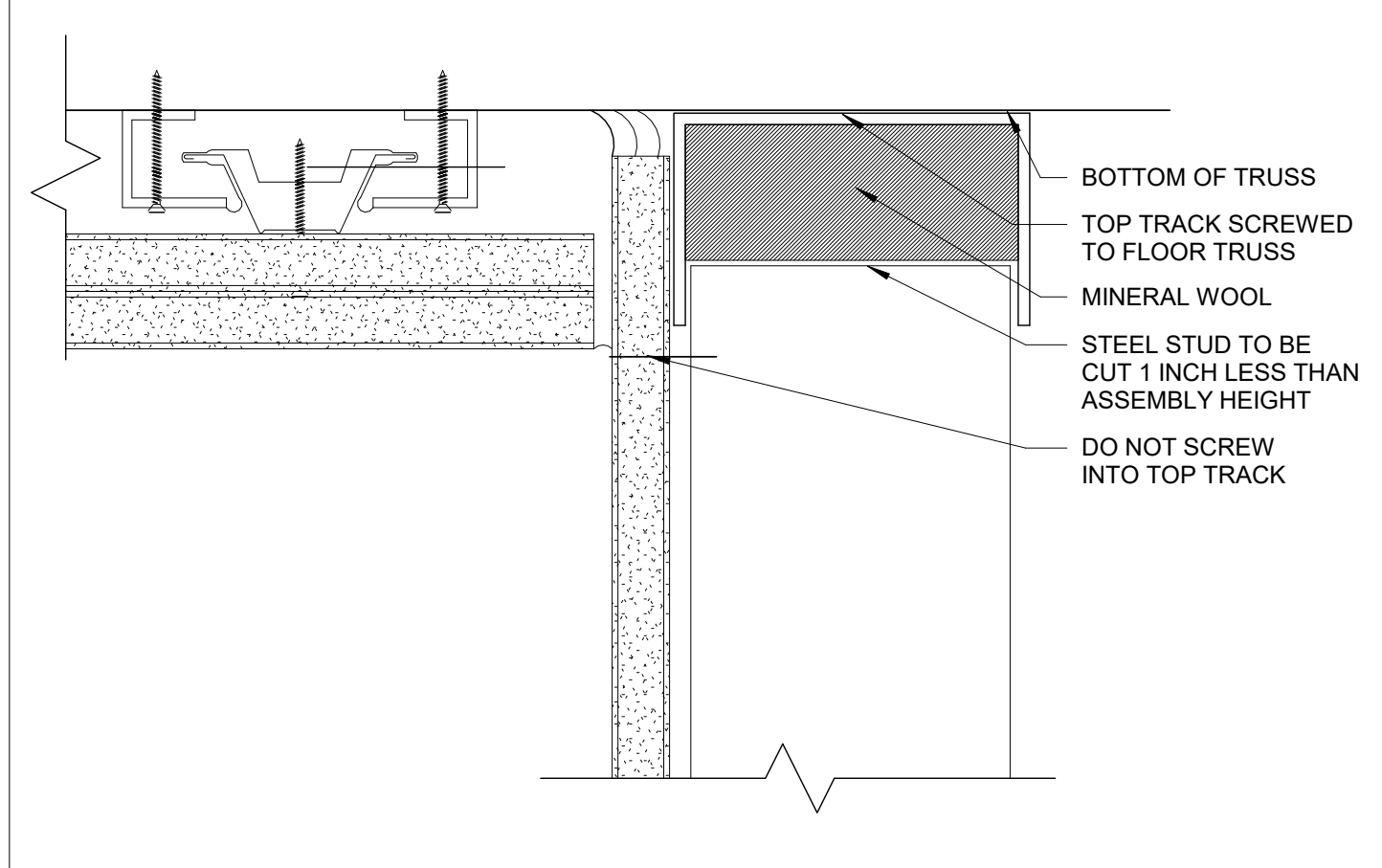
13 | SOFFIT DETAIL AT GLAZING
3/4" = 1'-0"



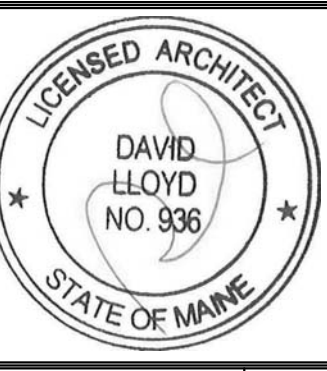
14 | WALL BASE DETAIL
6" = 1'-0"



15 | DEMISING WALL HEAD DETAIL
1 1/2" = 1'-0"



16 | TOP OF METAL STUD DETAIL
6" = 1'-0"



Prepared For:
**EssexNorth
Portland LLC**
P.O. Box 394
Topsfield, MA 01983

Consultant:
**ARCHETYPE
architects**
48 Union Wharf Portland, Maine 04101
(207) 772-6022 Fax (207) 772-4056

Project:
**THAMES STREET
CONDOMINIUM**
20 Thames Street, Portland Maine

Revisions:
5 08/16/17 HP REVISIONS

Date:
15 AUG 2017

Scale:
As indicated

INTERIOR DETAILS

A4.20