

EssexNorth  
Portland LLC

P.O. Box 394  
Topsfield, MA 01983

Prepared For:

Consultant:

**ARCHITECT**  
Architects  
48 Union Wharf Portland, Maine 04101  
(207) 772-6022 Fax (207) 772-4056

Architect:

THAMES STREET  
CONDOMINIUM

20 Thames Street, Portland, Maine

Project:

Revisions:

7/21/2017 BID SET

Scale:

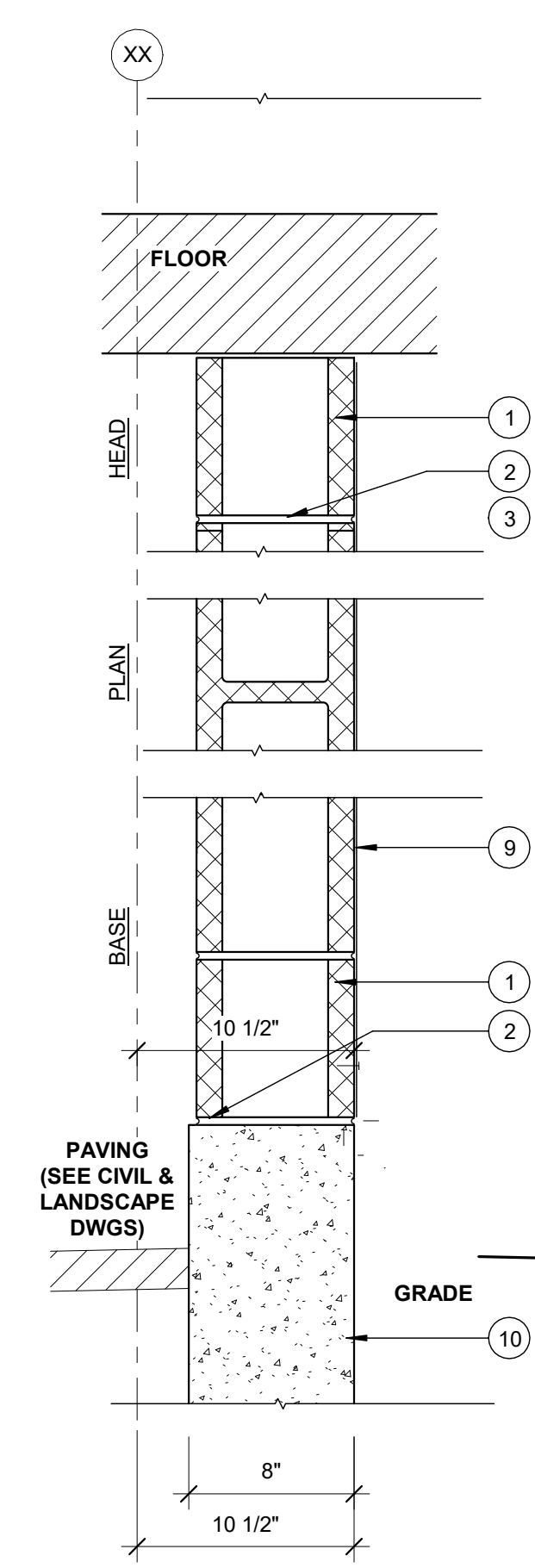
1 1/2" = 1'-0"

Date:

JULY 21, 2017

WALL TYPES

A4.01

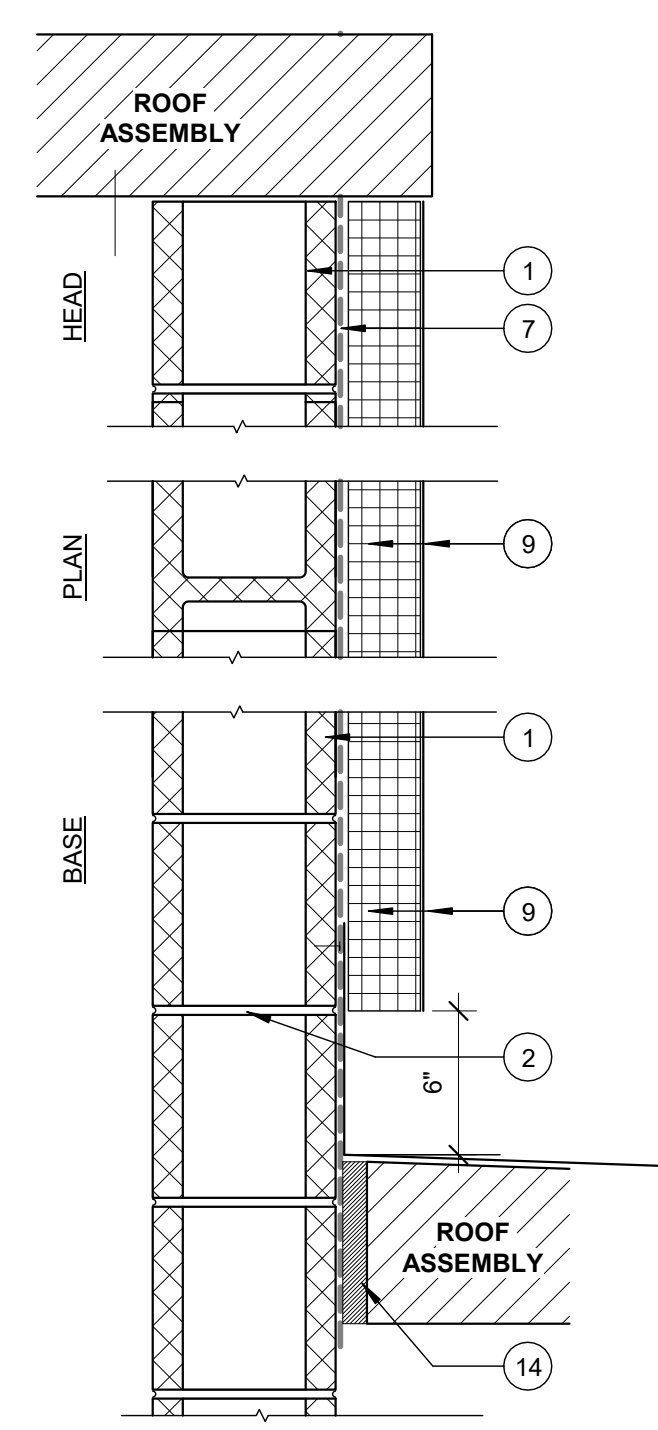


**W8** 2-HR NONBEARING EXTERIOR WALL  
UL - U905  
STC SOUND - N/A

1. CONCRETE BLOCKS - CLASSIFICATION D-2 (2HR) 8" NOM. THICKNESS.
2. MORTAR - BLOCKS LAID IN A FULL BED OF MORTAR, NOM. 3/8 IN THICK, OF NOT LESS THAN 2 1/4 AND NOT MORE THAN 3 1/2 PARTS CLEAN SHARP SAND TO 1 PART PORTLAND CEMENT (PROPORTIONED BY VOLUME) AND NOT MORE THAN 50 PERCENT HYDRATED LIME (BY CEMENT VOLUME). VERTICAL JOINTS STAGGERED.
3. REINFORCING - (NOT SHOWN) - SEE STRUCTURAL
4. .
5. .
6. .
7. .
8. .
9. MINERAL PAINT
10. .
11. .
12. .
13. CAST IN PLACE CONCRETE - REINFORCED CONCRETE WALL (SEE STRUCTURALS)

SEE EXT. DETAILS FOR THRU FLASHING, ACCESSORIES, AND DETAILS

8 | WALL 8 - EXT. WALL - CMU  
1 1/2" = 1'-0"



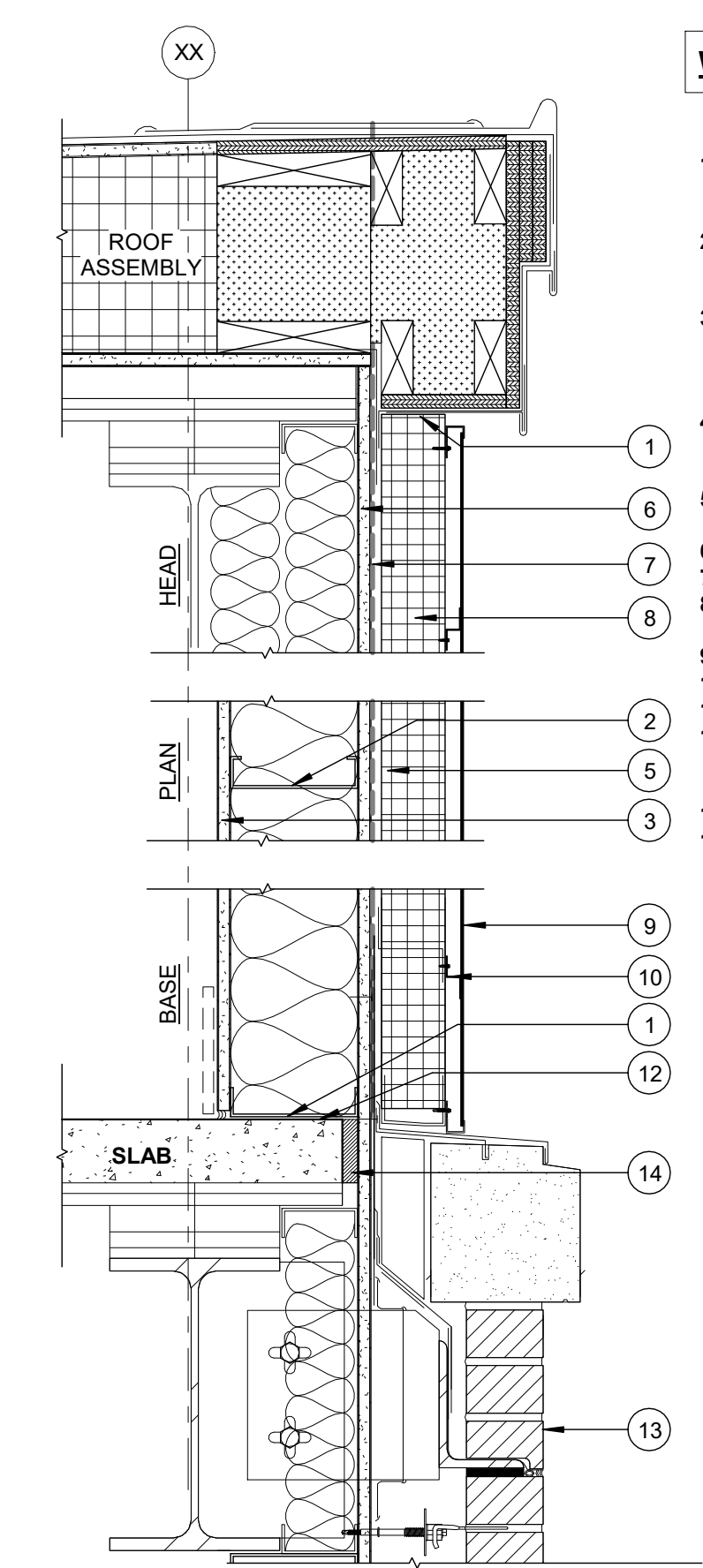
**W9** 2-HR NONBEARING EXTERIOR WALL  
UL - U905  
STC SOUND - N/A

1. CONCRETE BLOCKS - CLASSIFICATION D-2 (2HR) 8" NOM. THICKNESS.
2. MORTAR - BLOCKS LAID IN A FULL BED OF MORTAR, NOM. 3/8 IN THICK, OF NOT LESS THAN 2 1/4 AND NOT MORE THAN 3 1/2 PARTS CLEAN SHARP SAND TO 1 PART PORTLAND CEMENT (PROPORTIONED BY VOLUME) AND NOT MORE THAN 50 PERCENT HYDRATED LIME (BY CEMENT VOLUME). VERTICAL JOINTS STAGGERED.
3. REINFORCING - (NOT SHOWN) - SEE STRUCTURAL
4. .
5. .
6. .
7. AIR/MOISTURE BARRIER LOCATION - INCLUDED IN EIFS WALL SYSTEM
8. .
9. EIFS WALL PANEL -- 2" XPS AND DRAINAGE PLANE SYSTEM WITH WEATHER BARRIER WITH STARTER TRACK WITH WEEP HOLES TYP. EIFS BASE COAT, MESH, FINISH COAT
10. .
11. .
12. .
13. .
14. FIRE STOPPING

SEE EXT. DETAILS FOR THRU FLASHING, ACCESSORIES, AND DETAILS

9 | WALL 9 - EXT WALL - EIFS - CMU  
1 1/2" = 1'-0"

USED AT THE STAIR PENTHOUSE ONLY



**W7** 1-HR NONBEARING EXTERIOR WALL  
UL - V419  
STC SOUND - N/A

1. CONT. METAL FLOOR AND CEILING RUNNER - CHANNEL SHAPED STEEL WITH 1 1/4" LONG LEGS FASTENERS @ 2'-0" O.C. MAX. WITHIN 1" OF ENDS
2. STEEL STUDS - CHANNEL SHAPED 6" STUDS SPACED MAX. 24" O.C. STUDS TO BE CUT 3/4" LESS THAN ASSEMBLY HEIGHT.
3. GYPSUM BOARD - (1) LAYER 5/8" TYPE X GYP. BD., APPLIED VERTICALLY. NAILED TO WOOD STUDS AND BEARING PLATES 6 IN. OC. WITH 6d CEMENT COATED NAILS, 1-7/8 IN. LONG, 0.0915 IN. SHANK DIAM. AND 1/4 IN. DIAM. HEAD.
4. JOINTS AND NAILHEADS -- (NOT SHOWN) -- WALLBOARD JOINTS COVERED WITH TAPE AND JOINT COMPOUND. NAIL HEADS COVERED WITH JOINT COMPOUND.
5. BATT INSULATION - 6" THICK FIBERGLASS BATT INSULATION FRICTION FIT INTO WALL CAVITY
6. DENSGLASS - 5/8" THICK
7. AIR/MOISTURE BARRIER - (SEE SPECIFICATIONS)
8. EXTERIOR INSULATION - 3 INCH POLYISOCYANURATE RIGID INSULATION, WITH A MIN. R-VALUE OF 5 PER INCH.
9. A13 - ALUMINUM COMPOSITE PANEL SYSTEM TO 2-FURRING PANEL SPACER - PART OF THE A13 SYSTEM
10. .
11. BED OF SEALANT - MTL TRACKS IN CONTACT WITH CONCRETE TO BE SET IN A FULL BED OF SEALANT. SEAL OTHER TRACKS TO DECK.
12. .
13. FIRE STOPPING
14. .

SEE EXT. DETAILS FOR THRU FLASHING, ACCESSORIES, AND DETAILS

7 | WALL 7 - EXT. WALL - MTL SIDING - MTL STUDS 2  
1 1/2" = 1'-0"