

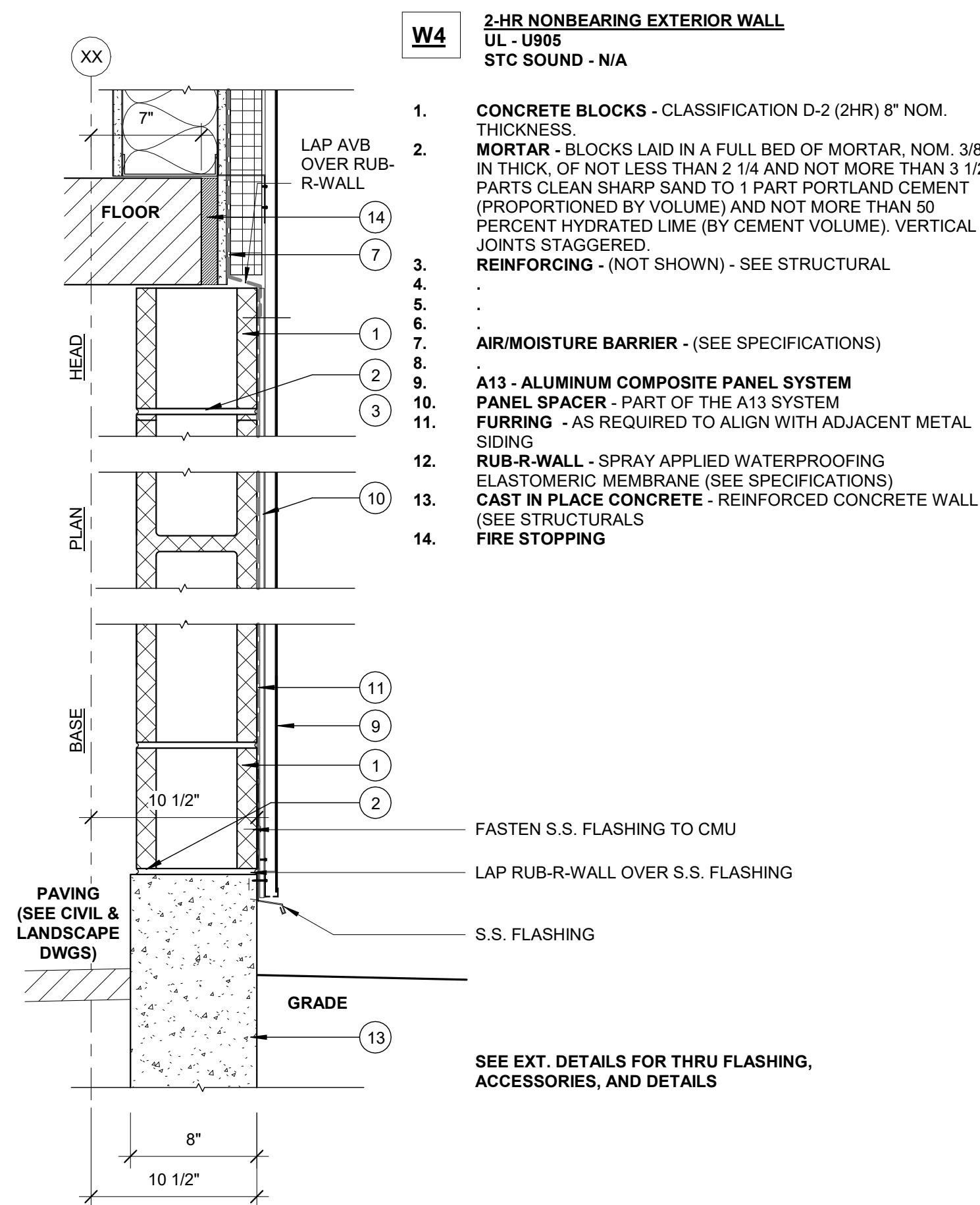
- W6** 1-HR NONBEARING EXTERIOR WALL  
1-HR RATED FOR EXTERIOR & INTERIOR  
UL - V419  
STC SOUND - N/A
1. CONT. METAL FLOOR AND CEILING RUNNER - CHANNEL SHAPED STEEL WITH 1 1/4" LONG LEGS FASTENERS @ 2'-0" O.C. MAX. WITHIN 1" OF ENDS
  2. STEEL STUDS - CHANNEL SHAPED 6" STUDS SPACED MAX. 24" O.C. STUDS TO BE CUT 3/4" LESS THAN ASSEMBLY HEIGHT.
  3. GYPSUM BOARD - (1) LAYER 5/8" TYPE X GYP. BD., APPLIED VERTICALLY. NAILED TO WOOD STUDS AND BEARING PLATES 6 IN. OC. WITH 6d CEMENT COATED NAILS, 1-7/8 IN. LONG, 0.0915 IN. SHANK DIAM. AND 1/4 IN. DIAM. HEAD.
  4. JOINTS AND NAILHEADS -- (NOT SHOWN) -- WALLBOARD JOINTS COVERED WITH TAPE AND JOINT COMPOUND. NAIL HEADS COVERED WITH JOINT COMPOUND.
  5. BATT INSULATION - 6" THICK FIBERGLASS BATT INSULATION FRICTION FIT INTO WALL CAVITY
  6. DENSGLOSS - 5/8" THICK
  7. AIR/MOISTURE BARRIER - (SEE SPECIFICATIONS)
  8. EXTERIOR INSULATION - 2 INCH POLYISOCYANURATE RIGID INSULATION, WITH A MIN. R-VALUE OF 5 PER INCH.
  9. SHEATHING - 5/8" PRESSURE TREATED
  10. GYPSUM BOARD - 5/8" GYPSUM EXTERIOR TYPE X
  11. BED OF SEALANT - MTL TRACKS IN CONTACT WITH CONCRETE TO BE SET IN A FULL BED OF SEALANT. SEAL OTHER TRACKS TO DECK.
  12. CAST IN PLACE CONCRETE - REINFORCED CONCRETE WALL (SEE STRUCTURALS)
  13. CAST IN PLACE CONCRETE - REINFORCED CONCRETE WALL (SEE STRUCTURALS)

FASTEN TO STUDS  
LAP AVB TO S.S. FLASHING

SEE EXT. DETAILS FOR THRU FLASHING, ACCESSORIES, AND DETAILS

BLOCKING

6 | WALL 6 - EXT. WALL - EXT. GYP - MTL STUDS  
1 1/2" = 1'-0"

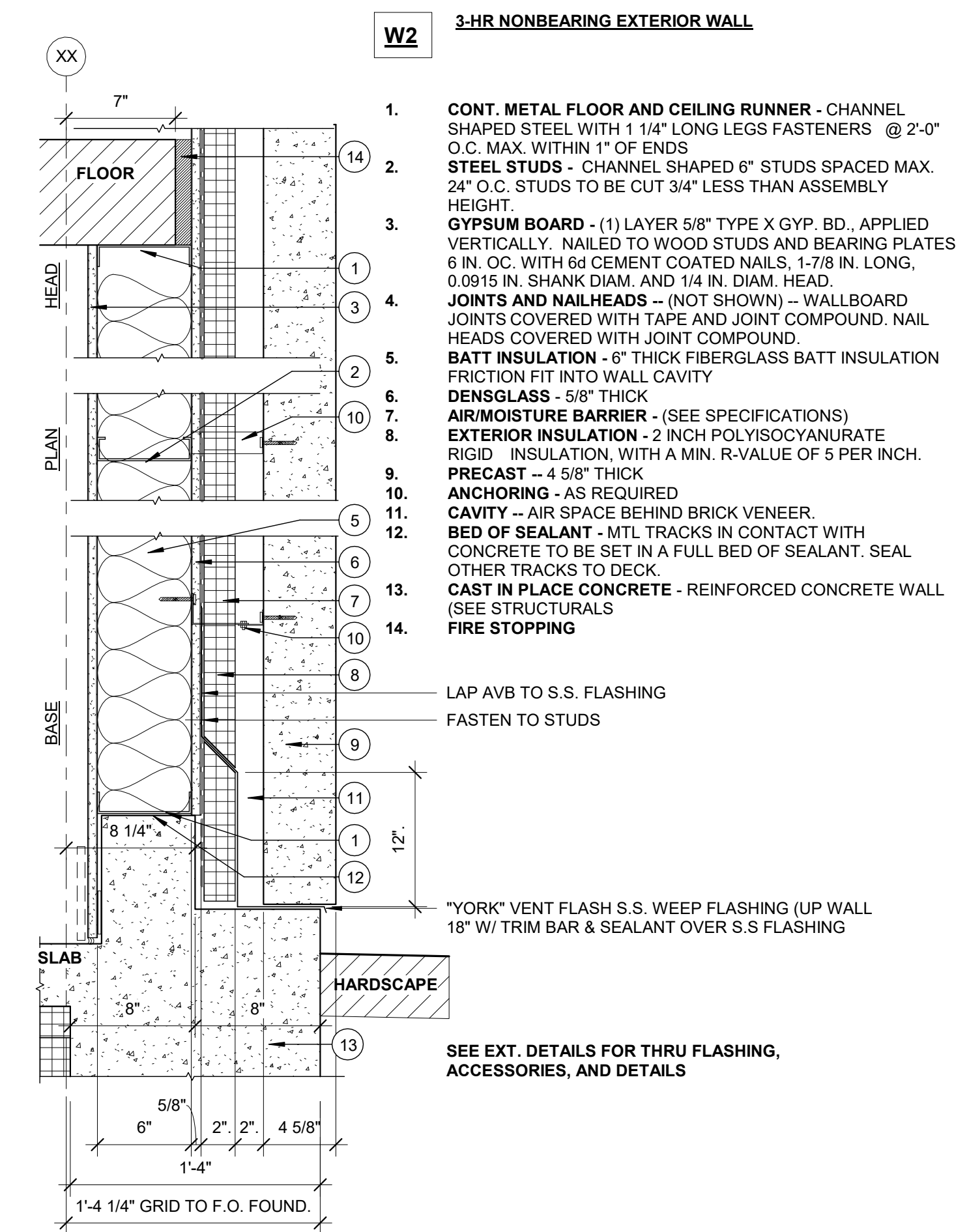


- W4** 2-HR NONBEARING EXTERIOR WALL  
UL - U905  
STC SOUND - N/A
1. CONCRETE BLOCKS - CLASSIFICATION D-2 (2HR) 8" NOM. THICKNESS.
  2. MORTAR - BLOCKS LAID IN A FULL BED OF MORTAR, NOM. 3/8 IN THICK, OF NOT LESS THAN 2 1/4 AND NOT MORE THAN 3 1/2 PARTS CLEAN SHARP SAND TO 1 PART PORTLAND CEMENT (PROPORTIONED BY VOLUME) AND NOT MORE THAN 50 PERCENT HYDRATED LIME (BY CEMENT VOLUME). VERTICAL JOINTS STAGGERED.
  3. REINFORCING - (NOT SHOWN) - SEE STRUCTURAL
  4. .
  5. .
  6. AIR/MOISTURE BARRIER - (SEE SPECIFICATIONS)
  7. .
  8. A13 - ALUMINUM COMPOSITE PANEL SYSTEM
  9. PANEL SPACER - PART OF THE A13 SYSTEM
  10. FURRING - AS REQUIRED TO ALIGN WITH ADJACENT METAL SIDING
  11. RUB-R-WALL - SPRAY APPLIED WATERPROOFING ELASTOMERIC MEMBRANE (SEE SPECIFICATIONS)
  12. CAST IN PLACE CONCRETE - REINFORCED CONCRETE WALL (SEE STRUCTURALS)
  13. FIRE STOPPING
  14. FIRE STOPPING

FASTEN S.S. FLASHING TO CMU  
LAP RUB-R-WALL OVER S.S. FLASHING  
S.S. FLASHING

SEE EXT. DETAILS FOR THRU FLASHING, ACCESSORIES, AND DETAILS

4 | WALL 4 - EXT. WALL - METAL SIDING - CMU  
1 1/2" = 1'-0"



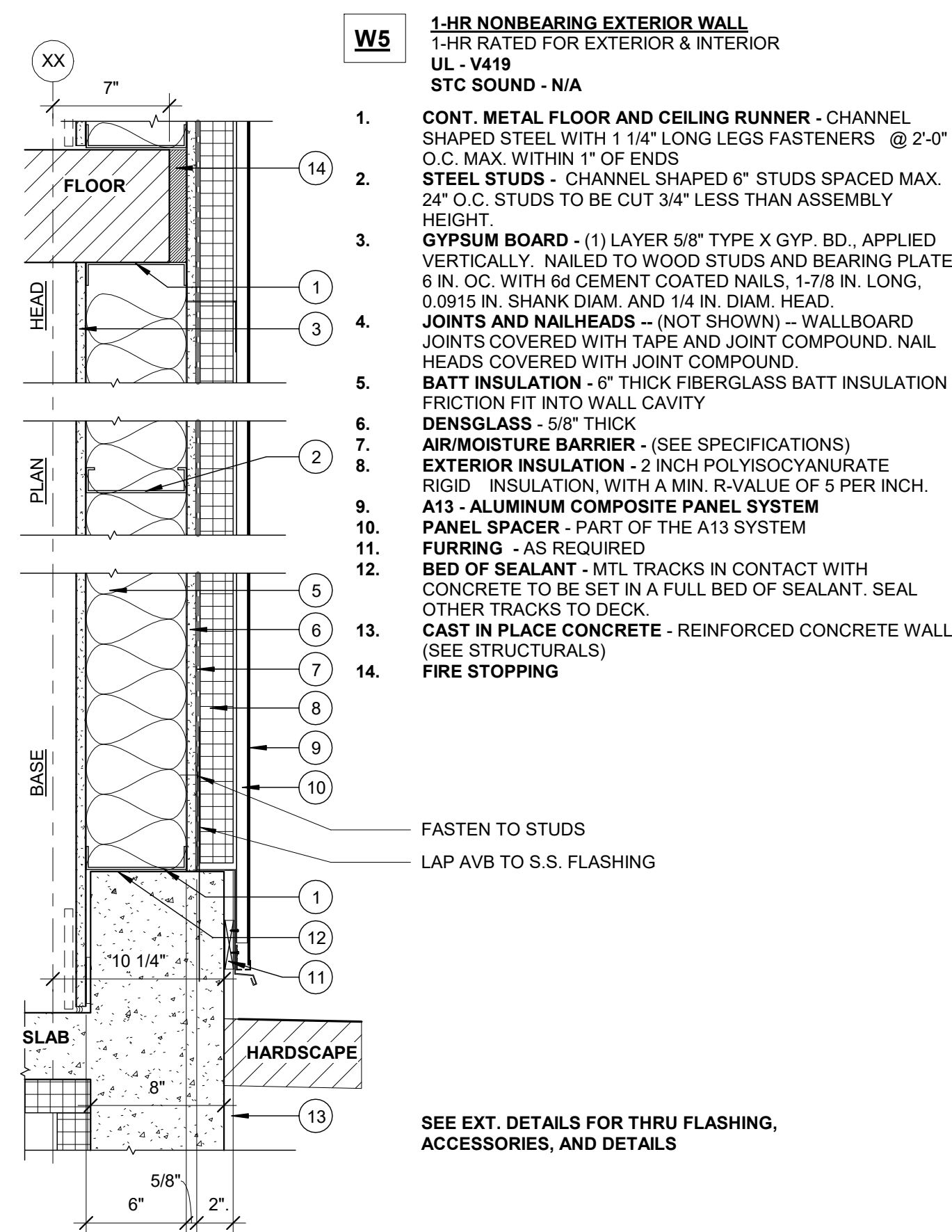
- W2** 3-HR NONBEARING EXTERIOR WALL
1. CONT. METAL FLOOR AND CEILING RUNNER - CHANNEL SHAPED STEEL WITH 1 1/4" LONG LEGS FASTENERS @ 2'-0" O.C. MAX. WITHIN 1" OF ENDS
  2. STEEL STUDS - CHANNEL SHAPED 6" STUDS SPACED MAX. 24" O.C. STUDS TO BE CUT 3/4" LESS THAN ASSEMBLY HEIGHT.
  3. GYPSUM BOARD - (1) LAYER 5/8" TYPE X GYP. BD., APPLIED VERTICALLY. NAILED TO WOOD STUDS AND BEARING PLATES 6 IN. OC. WITH 6d CEMENT COATED NAILS, 1-7/8 IN. LONG, 0.0915 IN. SHANK DIAM. AND 1/4 IN. DIAM. HEAD.
  4. JOINTS AND NAILHEADS -- (NOT SHOWN) -- WALLBOARD JOINTS COVERED WITH TAPE AND JOINT COMPOUND. NAIL HEADS COVERED WITH JOINT COMPOUND.
  5. BATT INSULATION - 6" THICK FIBERGLASS BATT INSULATION FRICTION FIT INTO WALL CAVITY
  6. DENSGLOSS - 5/8" THICK
  7. AIR/MOISTURE BARRIER - (SEE SPECIFICATIONS)
  8. EXTERIOR INSULATION - 2 INCH POLYISOCYANURATE RIGID INSULATION, WITH A MIN. R-VALUE OF 5 PER INCH.
  9. PRECAST - 4 5/8" THICK
  10. ANCHORING - AS REQUIRED
  11. CAVITY - AIR SPACE BEHIND BRICK VENEER.
  12. BED OF SEALANT - MTL TRACKS IN CONTACT WITH CONCRETE TO BE SET IN A FULL BED OF SEALANT. SEAL OTHER TRACKS TO DECK.
  13. CAST IN PLACE CONCRETE - REINFORCED CONCRETE WALL (SEE STRUCTURALS)
  14. FIRE STOPPING

LAP AVB TO S.S. FLASHING  
FASTEN TO STUDS

"YORK" VENT FLASH S.S. WEEP FLASHING (UP WALL 18" W/ TRIM BAR & SEALANT OVER S.S. FLASHING)

SEE EXT. DETAILS FOR THRU FLASHING, ACCESSORIES, AND DETAILS

2 | WALL 2 - EXT. WALL - PRECAST - METAL STUDS  
1 1/2" = 1'-0"

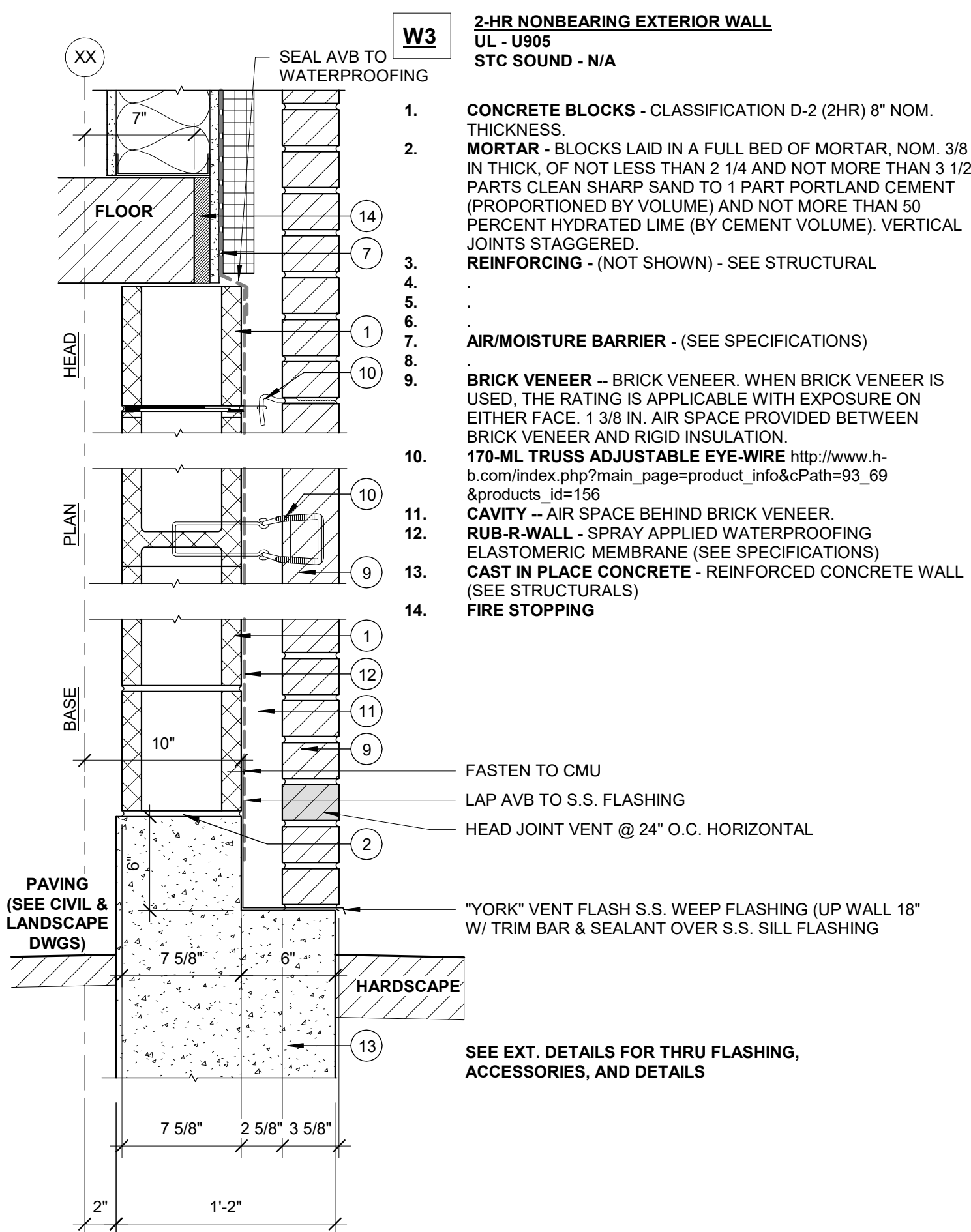


- W5** 1-HR NONBEARING EXTERIOR WALL  
1-HR RATED FOR EXTERIOR & INTERIOR  
UL - V419  
STC SOUND - N/A
1. CONT. METAL FLOOR AND CEILING RUNNER - CHANNEL SHAPED STEEL WITH 1 1/4" LONG LEGS FASTENERS @ 2'-0" O.C. MAX. WITHIN 1" OF ENDS
  2. STEEL STUDS - CHANNEL SHAPED 6" STUDS SPACED MAX. 24" O.C. STUDS TO BE CUT 3/4" LESS THAN ASSEMBLY HEIGHT.
  3. GYPSUM BOARD - (1) LAYER 5/8" TYPE X GYP. BD., APPLIED VERTICALLY. NAILED TO WOOD STUDS AND BEARING PLATES 6 IN. OC. WITH 6d CEMENT COATED NAILS, 1-7/8 IN. LONG, 0.0915 IN. SHANK DIAM. AND 1/4 IN. DIAM. HEAD.
  4. JOINTS AND NAILHEADS -- (NOT SHOWN) -- WALLBOARD JOINTS COVERED WITH TAPE AND JOINT COMPOUND. NAIL HEADS COVERED WITH JOINT COMPOUND.
  5. BATT INSULATION - 6" THICK FIBERGLASS BATT INSULATION FRICTION FIT INTO WALL CAVITY
  6. DENSGLOSS - 5/8" THICK
  7. AIR/MOISTURE BARRIER - (SEE SPECIFICATIONS)
  8. EXTERIOR INSULATION - 2 INCH POLYISOCYANURATE RIGID INSULATION, WITH A MIN. R-VALUE OF 5 PER INCH.
  9. A13 - ALUMINUM COMPOSITE PANEL SYSTEM
  10. PANEL SPACER - PART OF THE A13 SYSTEM
  11. FURRING - AS REQUIRED
  12. BED OF SEALANT - MTL TRACKS IN CONTACT WITH CONCRETE TO BE SET IN A FULL BED OF SEALANT. SEAL OTHER TRACKS TO DECK.
  13. CAST IN PLACE CONCRETE - REINFORCED CONCRETE WALL (SEE STRUCTURALS)
  14. FIRE STOPPING

FASTEN TO STUDS  
LAP AVB TO S.S. FLASHING

SEE EXT. DETAILS FOR THRU FLASHING, ACCESSORIES, AND DETAILS

5 | WALL 5 - EXT. WALL - MTL SIDING - MTL STUDS  
1 1/2" = 1'-0"



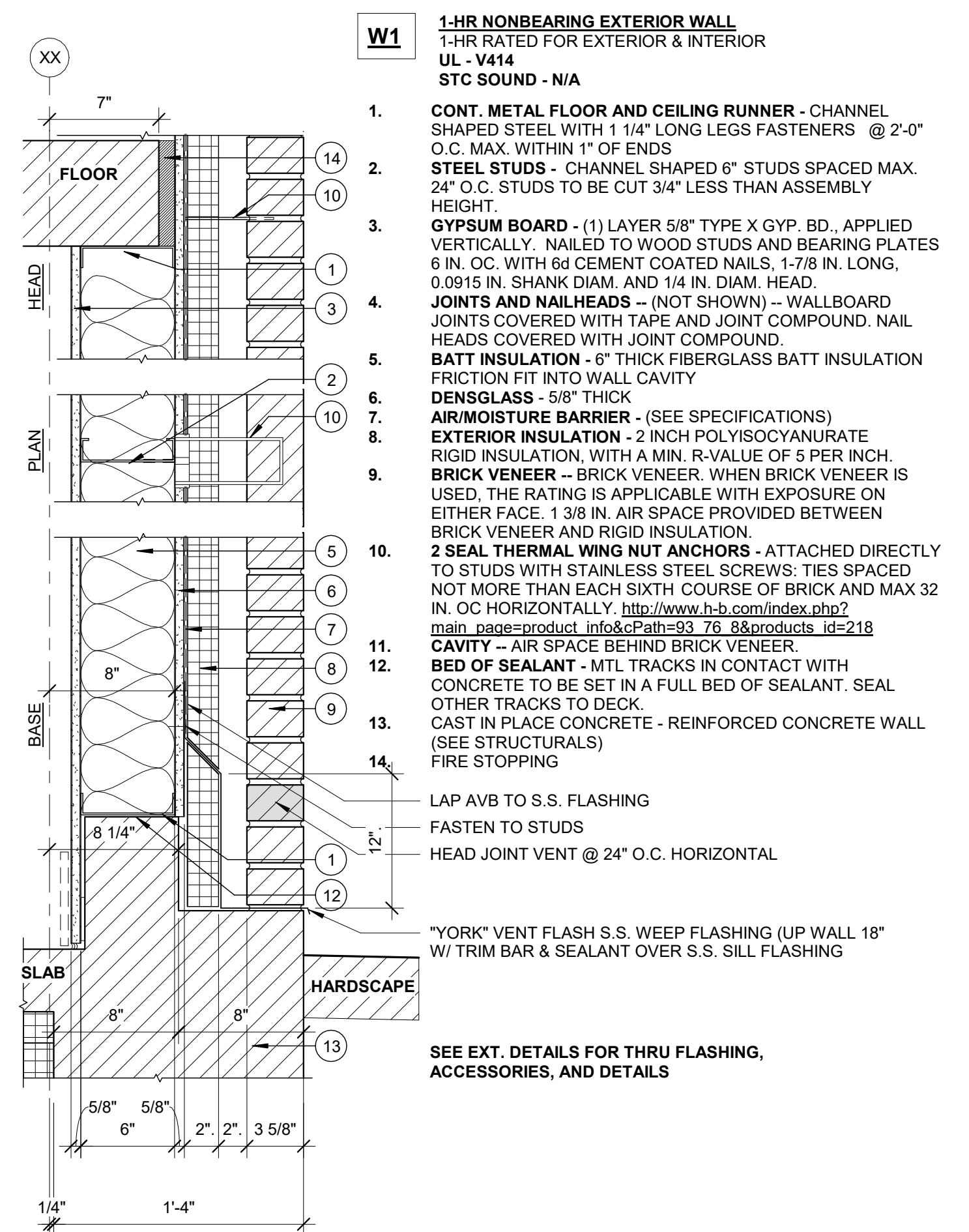
- W3** 2-HR NONBEARING EXTERIOR WALL  
UL - U905  
STC SOUND - N/A
1. CONCRETE BLOCKS - CLASSIFICATION D-2 (2HR) 8" NOM. THICKNESS.
  2. MORTAR - BLOCKS LAID IN A FULL BED OF MORTAR, NOM. 3/8 IN THICK, OF NOT LESS THAN 2 1/4 AND NOT MORE THAN 3 1/2 PARTS CLEAN SHARP SAND TO 1 PART PORTLAND CEMENT (PROPORTIONED BY VOLUME) AND NOT MORE THAN 50 PERCENT HYDRATED LIME (BY CEMENT VOLUME). VERTICAL JOINTS STAGGERED.
  3. REINFORCING - (NOT SHOWN) - SEE STRUCTURAL
  4. .
  5. .
  6. AIR/MOISTURE BARRIER - (SEE SPECIFICATIONS)
  7. .
  8. BRICK VENEER -- BRICK VENEER, WHEN BRICK VENEER IS USED, THE RATING IS APPLICABLE WITH EXPOSURE ON EITHER FACE. 1 3/8 IN. AIR SPACE PROVIDED BETWEEN BRICK VENEER AND RIGID INSULATION. [170-ML TRUSS ADJUSTABLE EYE-WIRE](http://www.h-b.com/index.php?main_page=product_info&cPath=93_69&products_id=156) [http://www.h-b.com/index.php?main\\_page=product\\_info&cPath=93\\_69&products\\_id=156](http://www.h-b.com/index.php?main_page=product_info&cPath=93_69&products_id=156)
  9. CAVITY -- AIR SPACE BEHIND BRICK VENEER.
  10. RUB-R-WALL - SPRAY APPLIED WATERPROOFING ELASTOMERIC MEMBRANE (SEE SPECIFICATIONS)
  11. CAST IN PLACE CONCRETE - REINFORCED CONCRETE WALL (SEE STRUCTURALS)
  12. FIRE STOPPING
  13. FIRE STOPPING
  14. FIRE STOPPING

FASTEN TO CMU  
LAP AVB TO S.S. FLASHING  
HEAD JOINT VENT @ 24" O.C. HORIZONTAL

"YORK" VENT FLASH S.S. WEEP FLASHING (UP WALL 18" W/ TRIM BAR & SEALANT OVER S.S. SILL FLASHING)

SEE EXT. DETAILS FOR THRU FLASHING, ACCESSORIES, AND DETAILS

3 | WALL 3 - EXT WALL - BRICK - CMU  
1 1/2" = 1'-0"



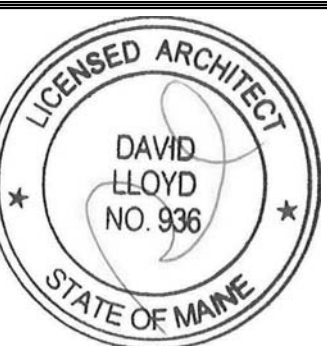
- W1** 1-HR NONBEARING EXTERIOR WALL  
1-HR RATED FOR EXTERIOR & INTERIOR  
UL - V414  
STC SOUND - N/A
1. CONT. METAL FLOOR AND CEILING RUNNER - CHANNEL SHAPED STEEL WITH 1 1/4" LONG LEGS FASTENERS @ 2'-0" O.C. MAX. WITHIN 1" OF ENDS
  2. STEEL STUDS - CHANNEL SHAPED 6" STUDS SPACED MAX. 24" O.C. STUDS TO BE CUT 3/4" LESS THAN ASSEMBLY HEIGHT.
  3. GYPSUM BOARD - (1) LAYER 5/8" TYPE X GYP. BD., APPLIED VERTICALLY. NAILED TO WOOD STUDS AND BEARING PLATES 6 IN. OC. WITH 6d CEMENT COATED NAILS, 1-7/8 IN. LONG, 0.0915 IN. SHANK DIAM. AND 1/4 IN. DIAM. HEAD.
  4. JOINTS AND NAILHEADS -- (NOT SHOWN) -- WALLBOARD JOINTS COVERED WITH TAPE AND JOINT COMPOUND. NAIL HEADS COVERED WITH JOINT COMPOUND.
  5. BATT INSULATION - 6" THICK FIBERGLASS BATT INSULATION FRICTION FIT INTO WALL CAVITY
  6. DENSGLOSS - 5/8" THICK
  7. AIR/MOISTURE BARRIER - (SEE SPECIFICATIONS)
  8. EXTERIOR INSULATION - 2 INCH POLYISOCYANURATE RIGID INSULATION, WITH A MIN. R-VALUE OF 5 PER INCH.
  9. BRICK VENEER -- BRICK VENEER, WHEN BRICK VENEER IS USED, THE RATING IS APPLICABLE WITH EXPOSURE ON EITHER FACE. 1 3/8 IN. AIR SPACE PROVIDED BETWEEN BRICK VENEER AND RIGID INSULATION.
  10. 2 SEAL THERMAL WING NUT ANCHORS - ATTACHED DIRECTLY TO STUDS WITH STAINLESS STEEL SCREWS. TIES SPACED NOT MORE THAN EACH SIXTH COURSE OF BRICK AND MAX 32 IN. OC HORIZONTALLY. [http://www.h-b.com/index.php?main\\_page=product\\_info&cPath=93\\_76\\_8&products\\_id=218](http://www.h-b.com/index.php?main_page=product_info&cPath=93_76_8&products_id=218)
  11. CAVITY -- AIR SPACE BEHIND BRICK VENEER
  12. BED OF SEALANT - MTL TRACKS IN CONTACT WITH CONCRETE TO BE SET IN A FULL BED OF SEALANT. SEAL OTHER TRACKS TO DECK.
  13. CAST IN PLACE CONCRETE - REINFORCED CONCRETE WALL (SEE STRUCTURALS)
  14. FIRE STOPPING

LAP AVB TO S.S. FLASHING  
FASTEN TO STUDS  
HEAD JOINT VENT @ 24" O.C. HORIZONTAL

"YORK" VENT FLASH S.S. WEEP FLASHING (UP WALL 18" W/ TRIM BAR & SEALANT OVER S.S. SILL FLASHING)

SEE EXT. DETAILS FOR THRU FLASHING, ACCESSORIES, AND DETAILS

1 | WALL 1 - EXT. WALL - BRICK - METAL STUDS  
1 1/2" = 1'-0"



Prepared For:  
**EssexNorth  
Portland LLC**  
Address  
City, State

Consultant:  
**ARCHETYPE  
architects**  
48 Union Wharf Portland, Maine 04101  
(207) 772-6022 Fax (207) 772-4056

Architect:  
**THAMES STREET  
CONDOMINIUM**  
20 Thames Street, Portland Maine

Project:  
7/21/2017 BID SET

Revisions:  
1 1/2" = 1'-0"

Date:  
JULY 21, 2017

**A4.00**

WALL TYPES