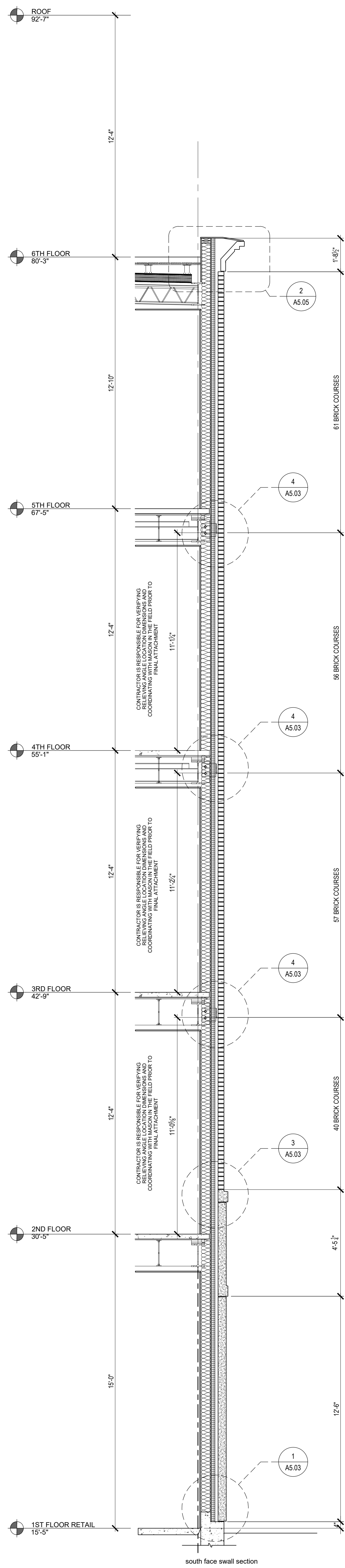


south face wall section

2 | BRICK COURSING WALL SECTION
3/8" = 1'-0"



south face wall section

1 | BRICK COURSING WALL SECTION
3/8" = 1'-0"

A3.31

Date: July 21, 2017
Scale: As indicated
MASONRY WALL SECTIONS

Revisions:
July 21, 2017 Final Bid Set
August 15, 2017 Addendum 2
October 17, 2017 Addendum 3 Revised
4 - DEC 1, 2017 Angle location shown I/A3.32
5 - DEC 5, 2017 Dimension adjustments

Project: THAMES STREET BUILDING
20 Thames Street, Portland Maine

Architect: ARCHETYPE Architects
48 Union Wharf Portland, Maine 04101
(207) 772-6022 ARCHETYPE@ARCHETYPEPA.COM

Consultant: ENVELOPE ARCHITECTURE & CONSULTING
BUILDING ENVELOPE DESIGN CONSULTING, INVESTIGATION AND COMMISSIONING - WINDHAM, ME
207-807-6661

Prepared For: EssexNorth Portland LLC
P.O. Box 394
Topsfield, MA 01983

