

Prepared For:
**EssexNorth
 Portland LLC**
 Address
 City, State

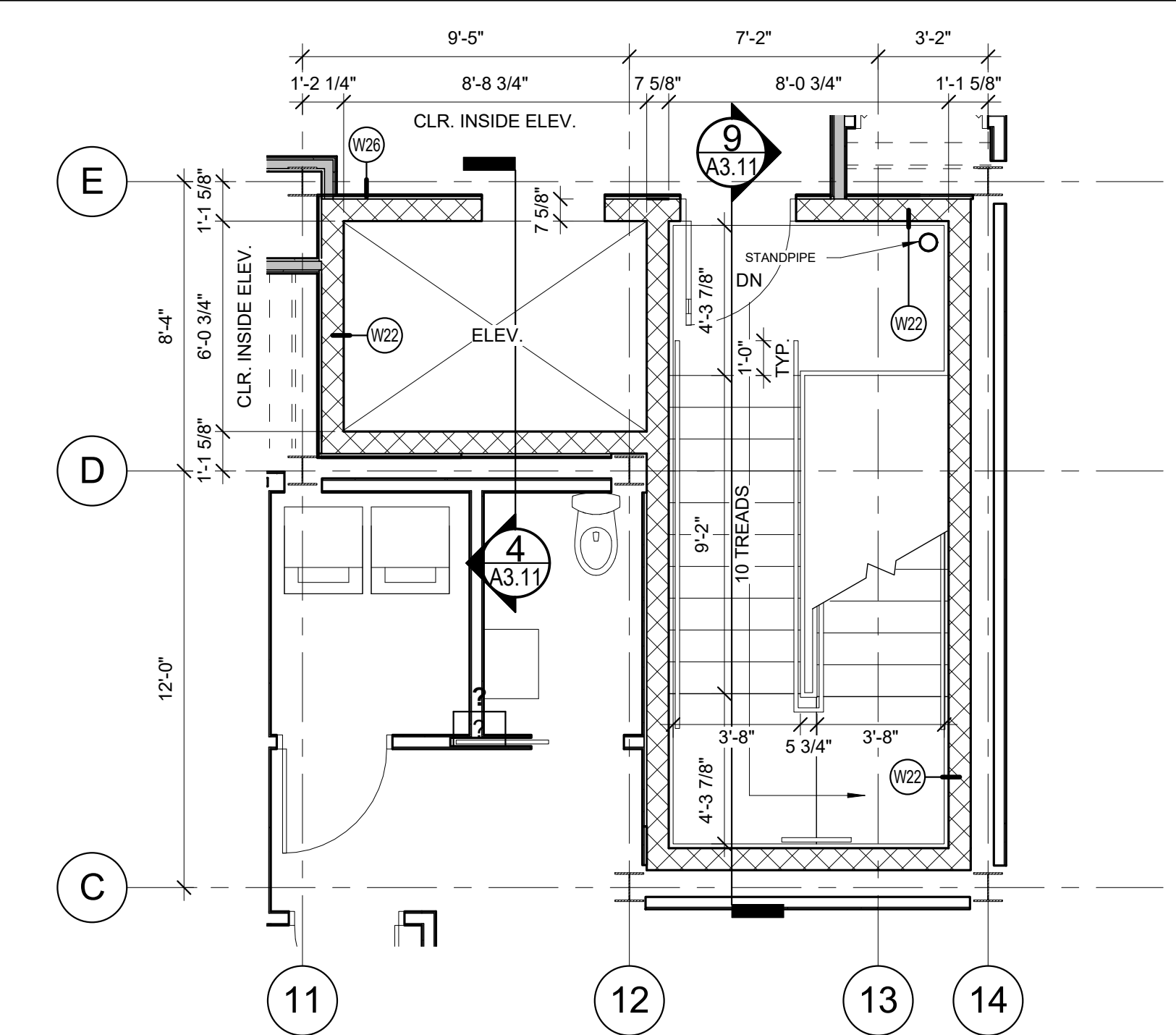
Consultant:
**ARCHETYPE
 architects**
 48 Union Wharf Portland, Maine 04101
 (207) 772-6022 Fax (207) 772-4056

Project:
**THAMES STREET
 CONDOMINIUM**
 20 Thames Street, Portland, Maine

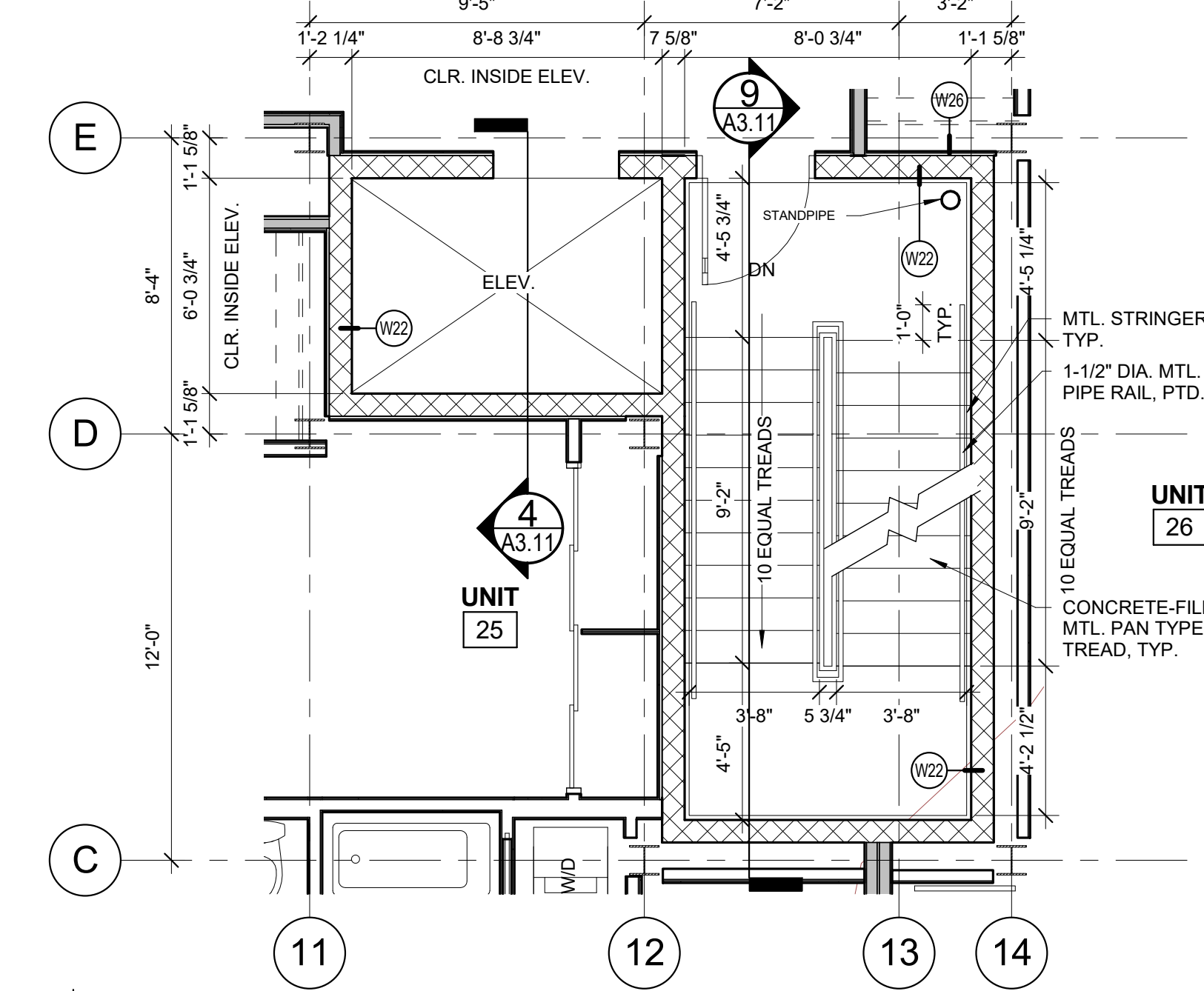
Revisions:
 7/21/2017 BID SET

Date: **JULY 21, 2017**
 Scale: **As indicated**
**ELEVATOR SECTION
 AND DETAILS**

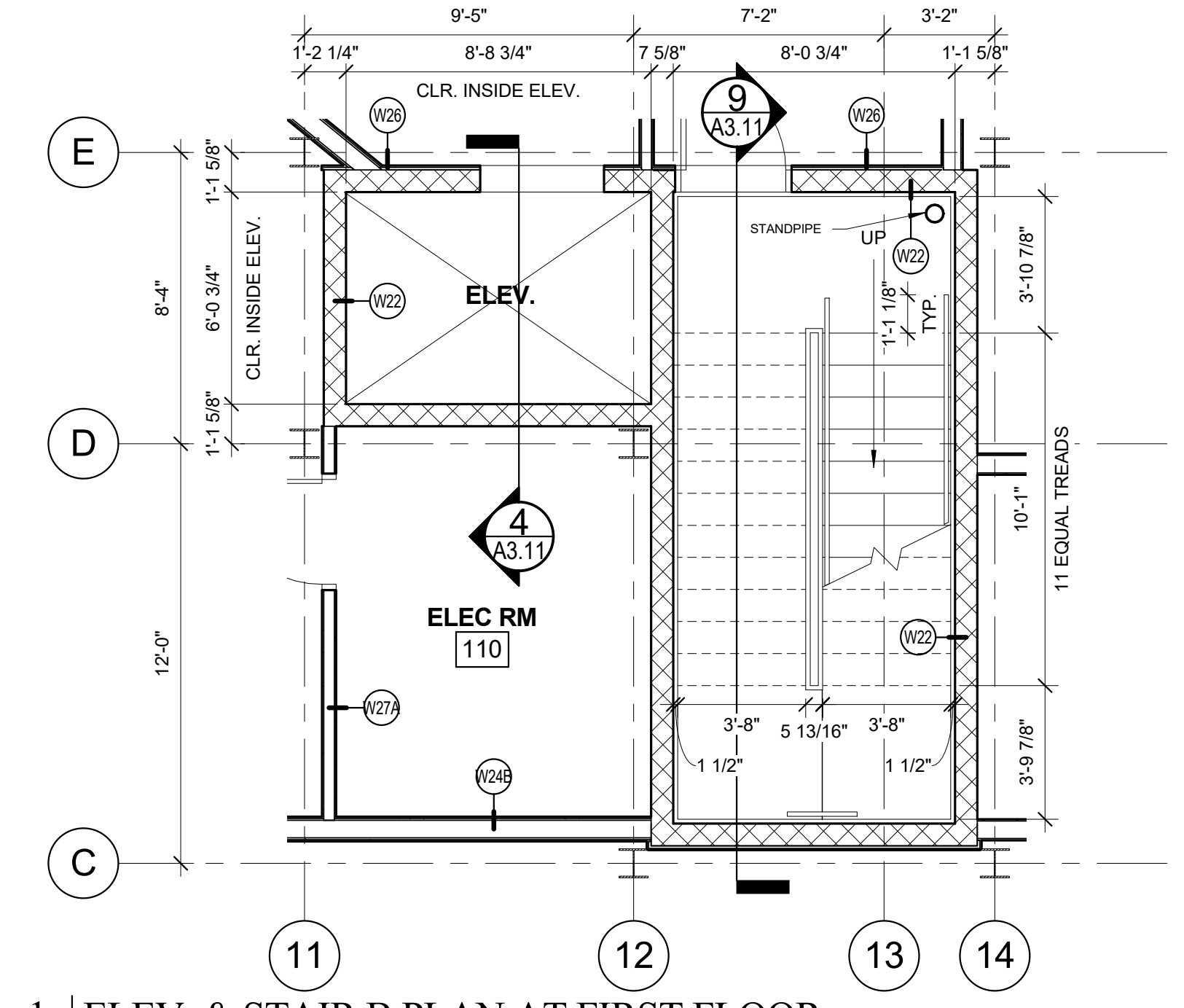
A3.11



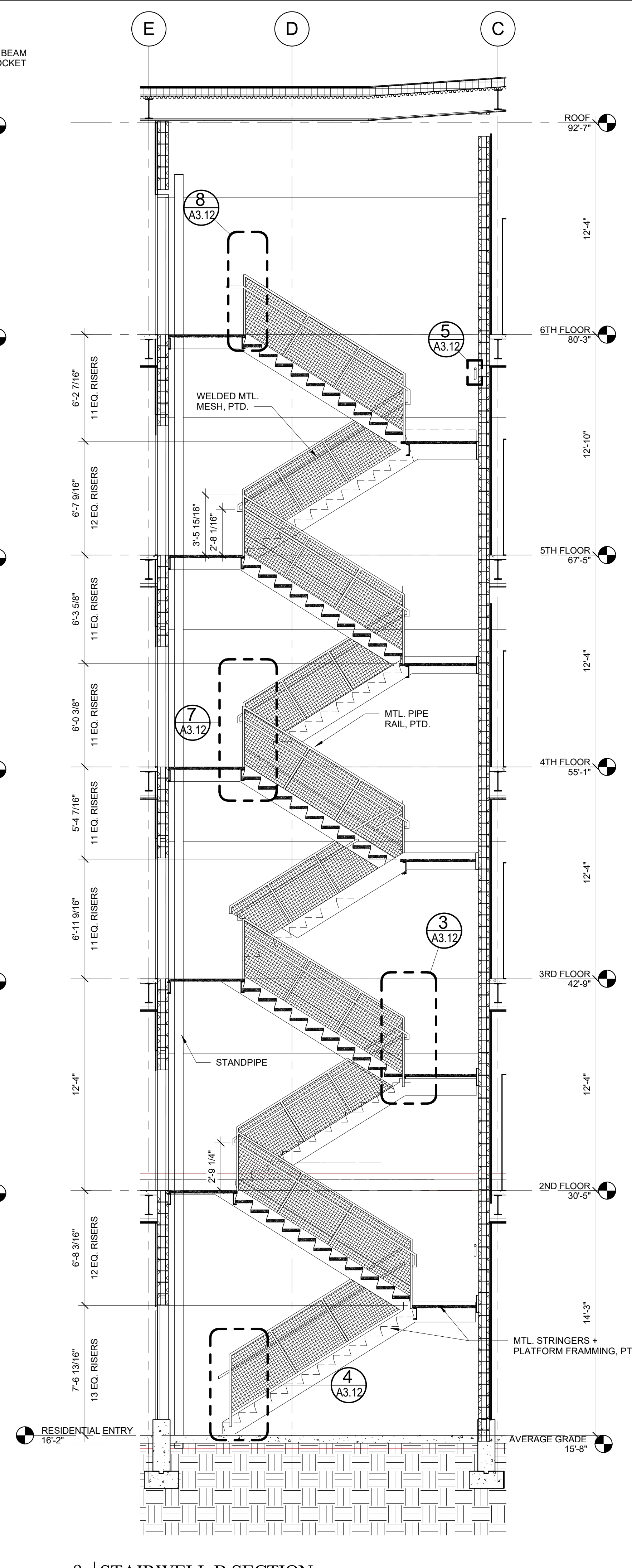
3 | ELEV. & STAIR B PLAN AT SIXTH FLOOR
 1/4" = 1'-0"



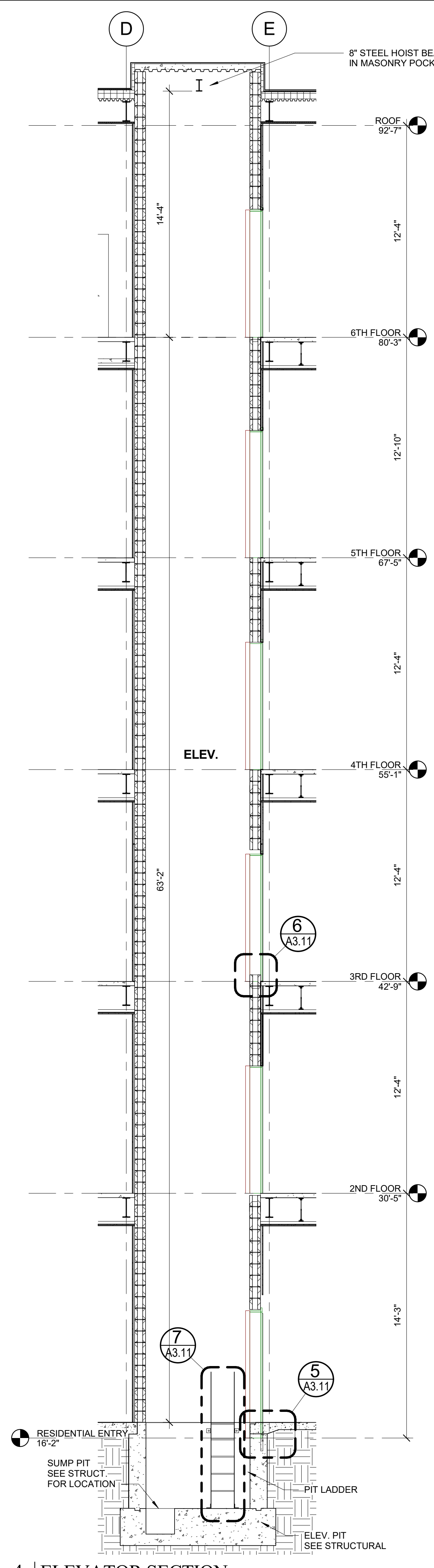
2 | ELEV. & STAIR B PLAN AT FLOORS 2-5
 1/4" = 1'-0"



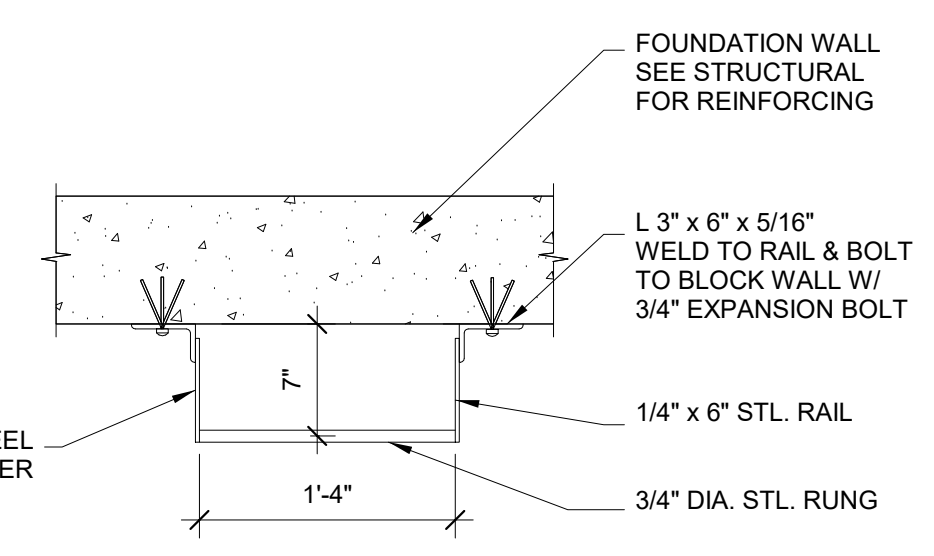
1 | ELEV. & STAIR B PLAN AT FIRST FLOOR
 1/4" = 1'-0"



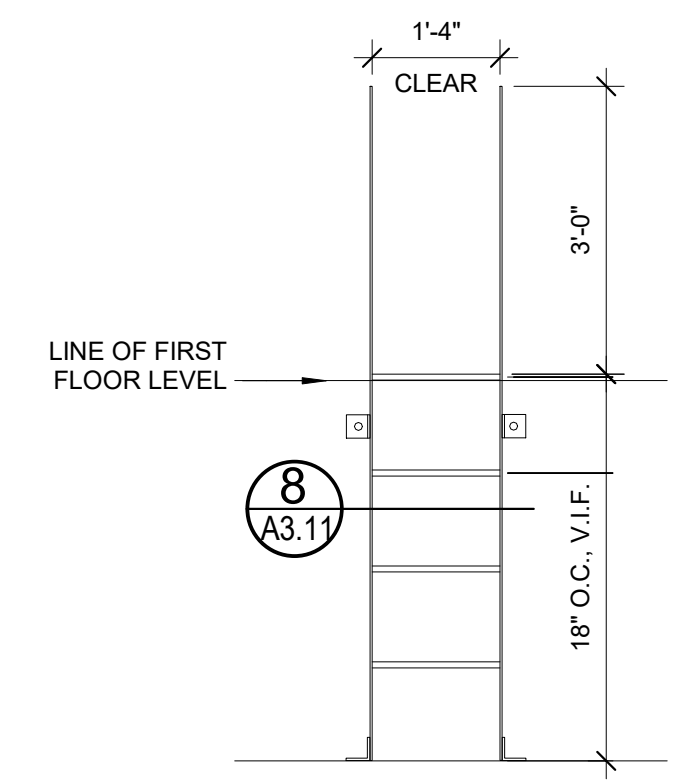
9 | STAIRWELL B SECTION
 1/4" = 1'-0"



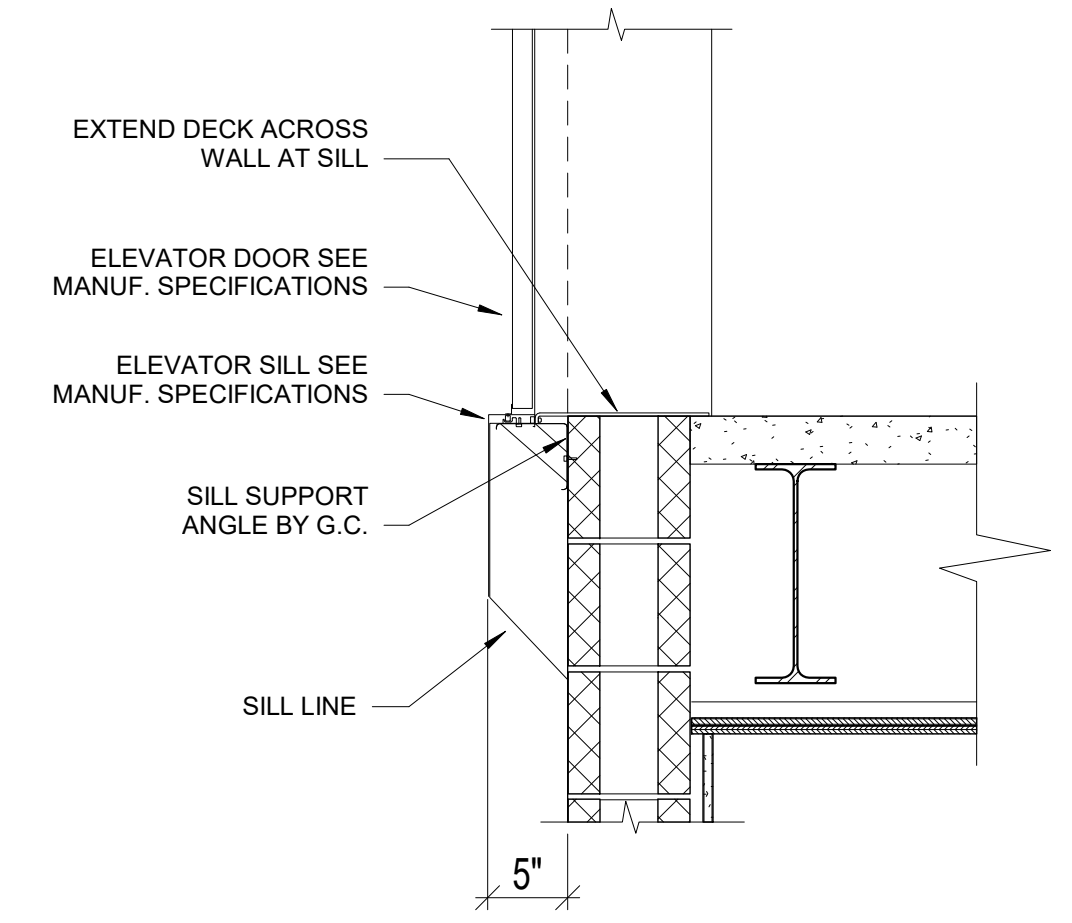
4 | ELEVATOR SECTION
 1/4" = 1'-0"



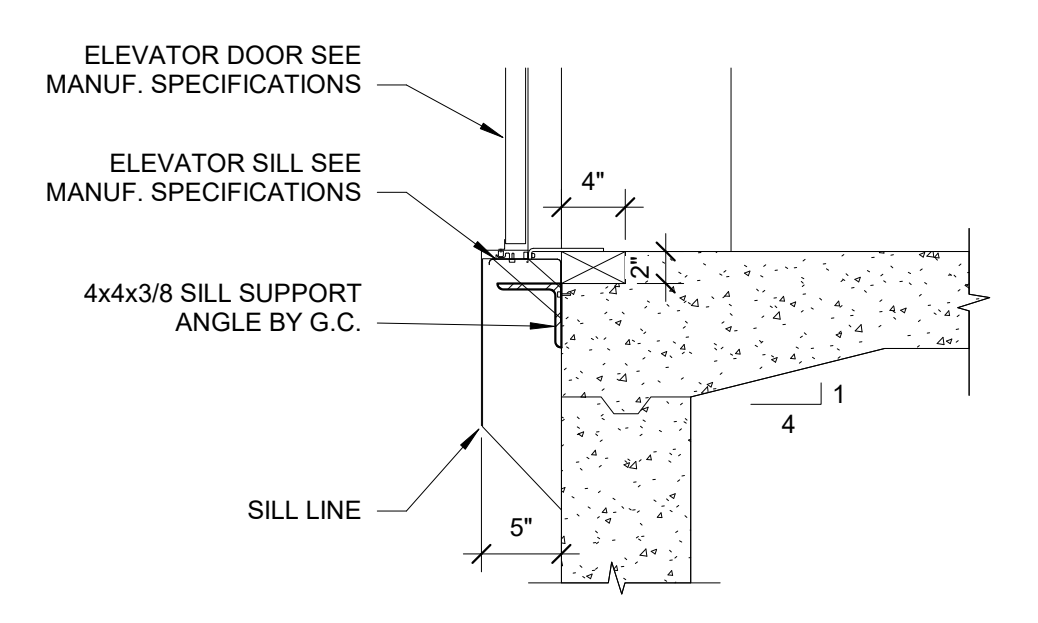
8 | ELEVATOR PIT LADDER PLAN
 1" = 1'-0"



7 | ELEVATOR PIT LADDER ELEVATION
 1/2" = 1'-0"



6 | ELEVATOR DOOR THRESHOLD
 1" = 1'-0"



5 | ELEVATOR DOOR AT CONCRETE
 1" = 1'-0"