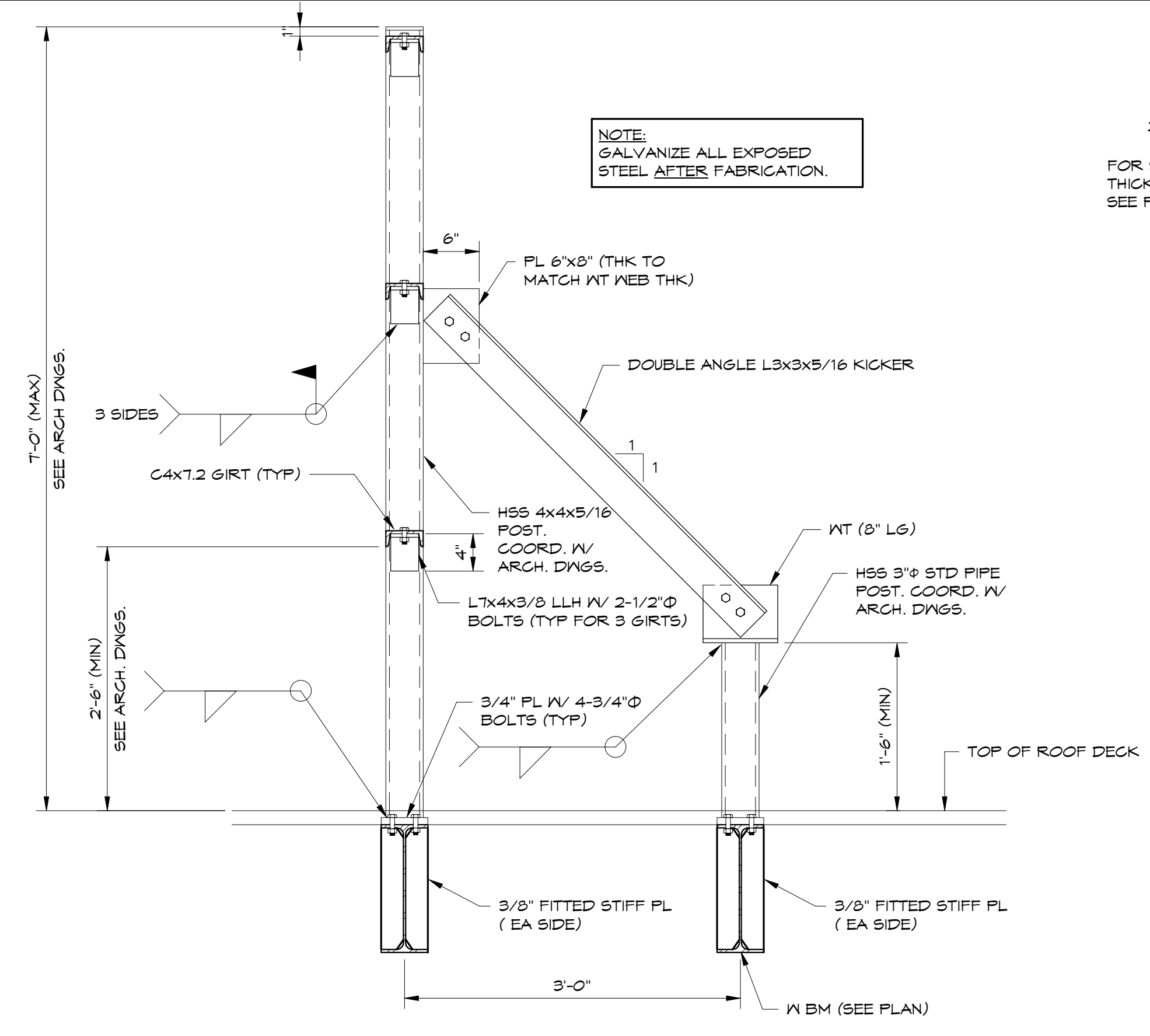


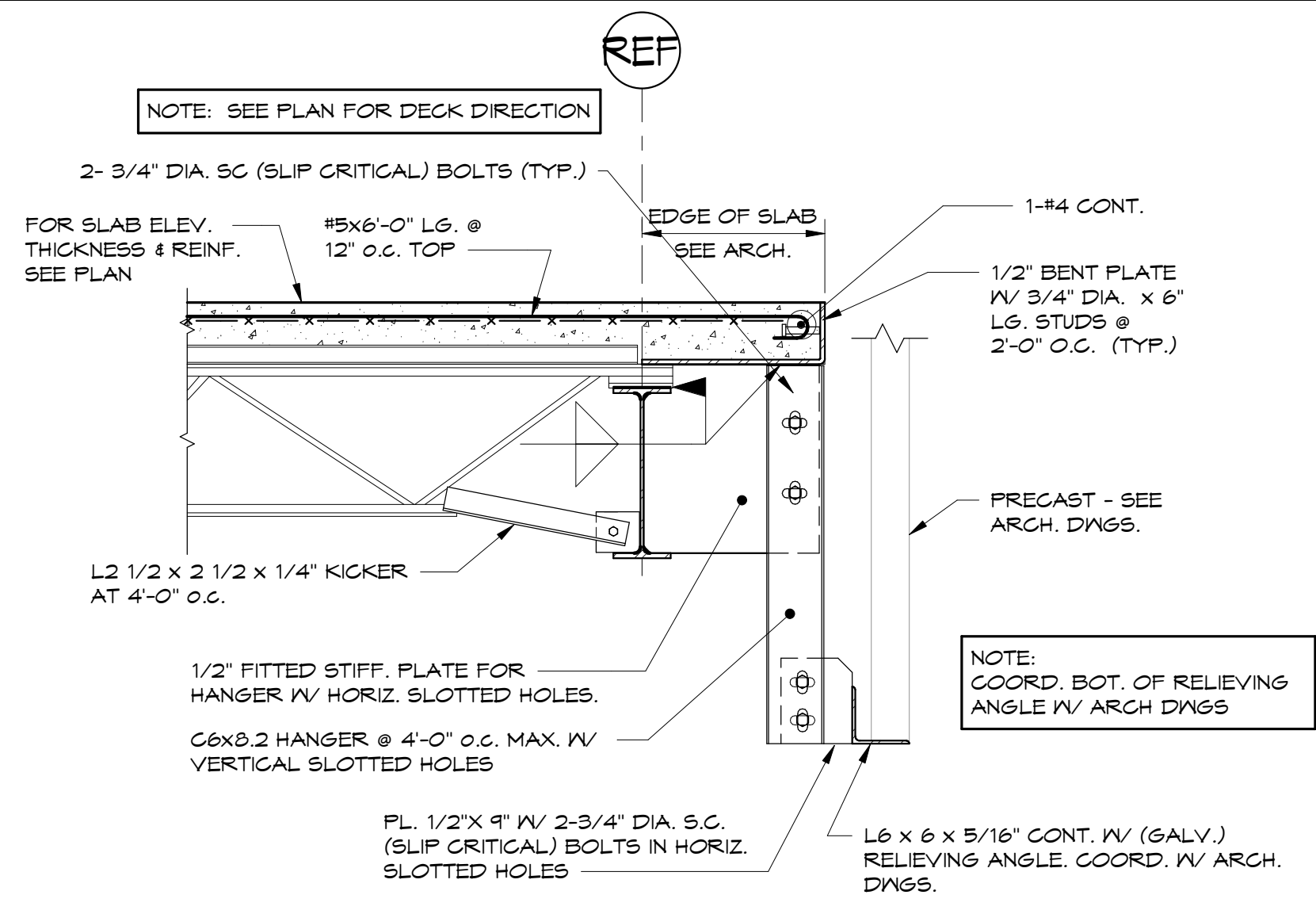
1 SECTION
55.02 3/4" = 1'-0"

NOTE USED

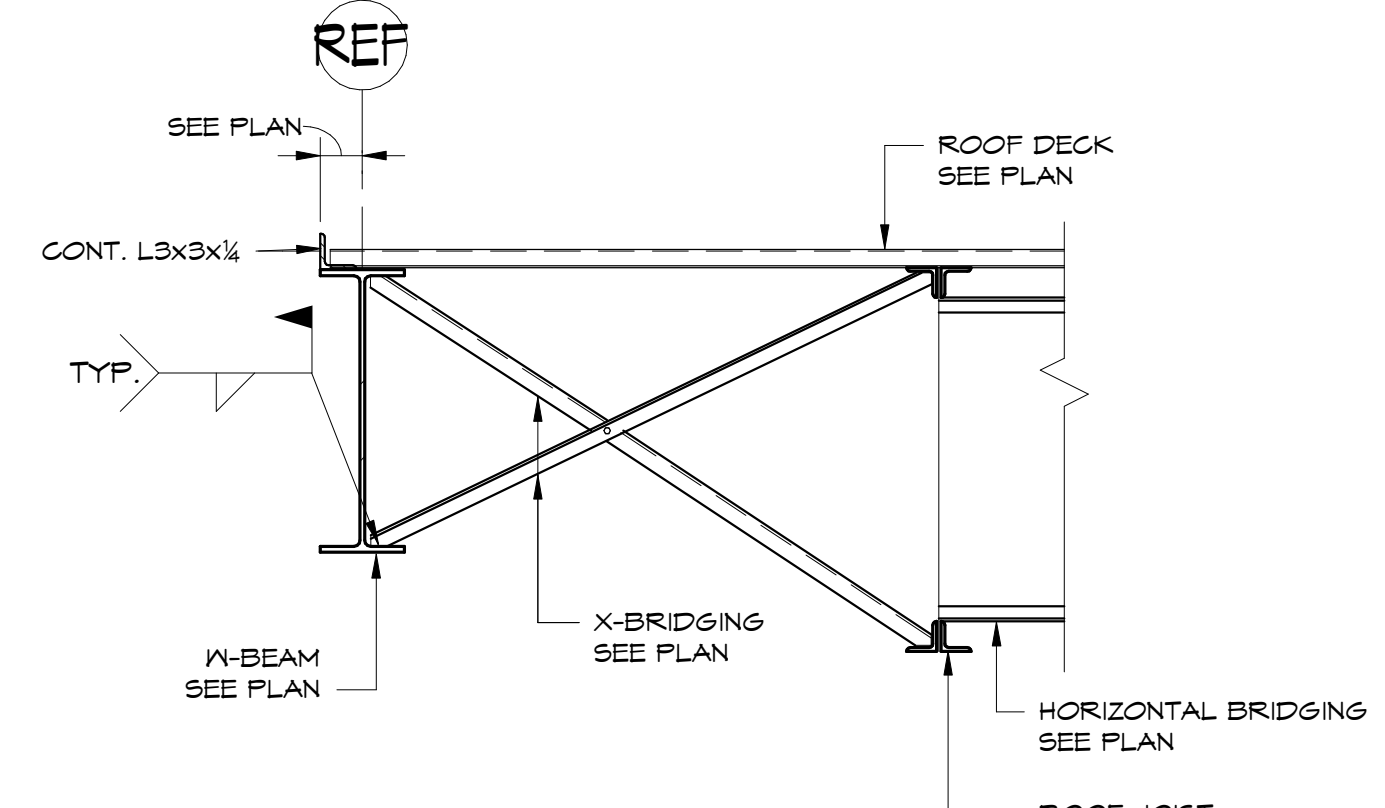


3 SECTION
55.02 1" = 1'-0"

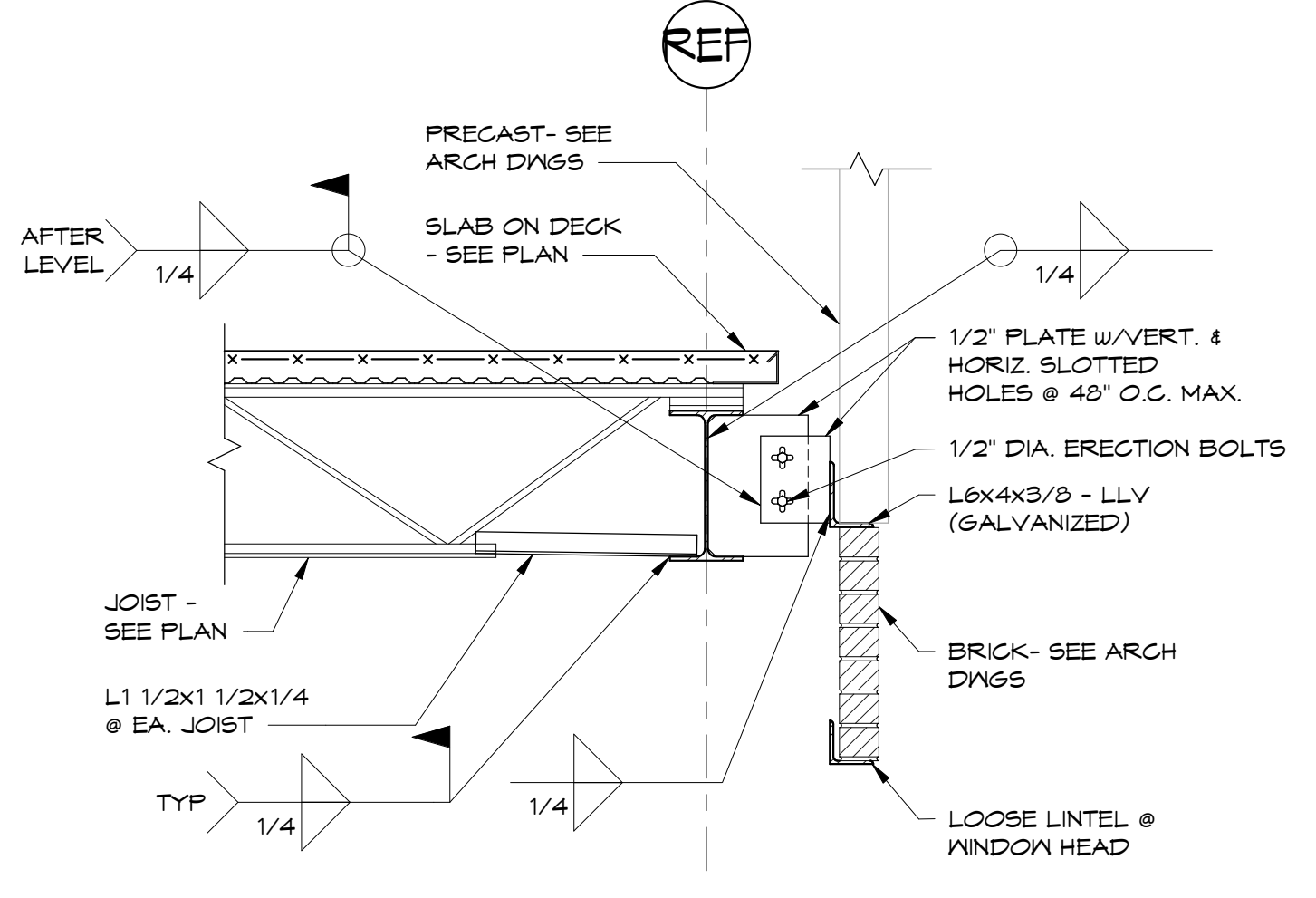
ROOF TOP SCREEN



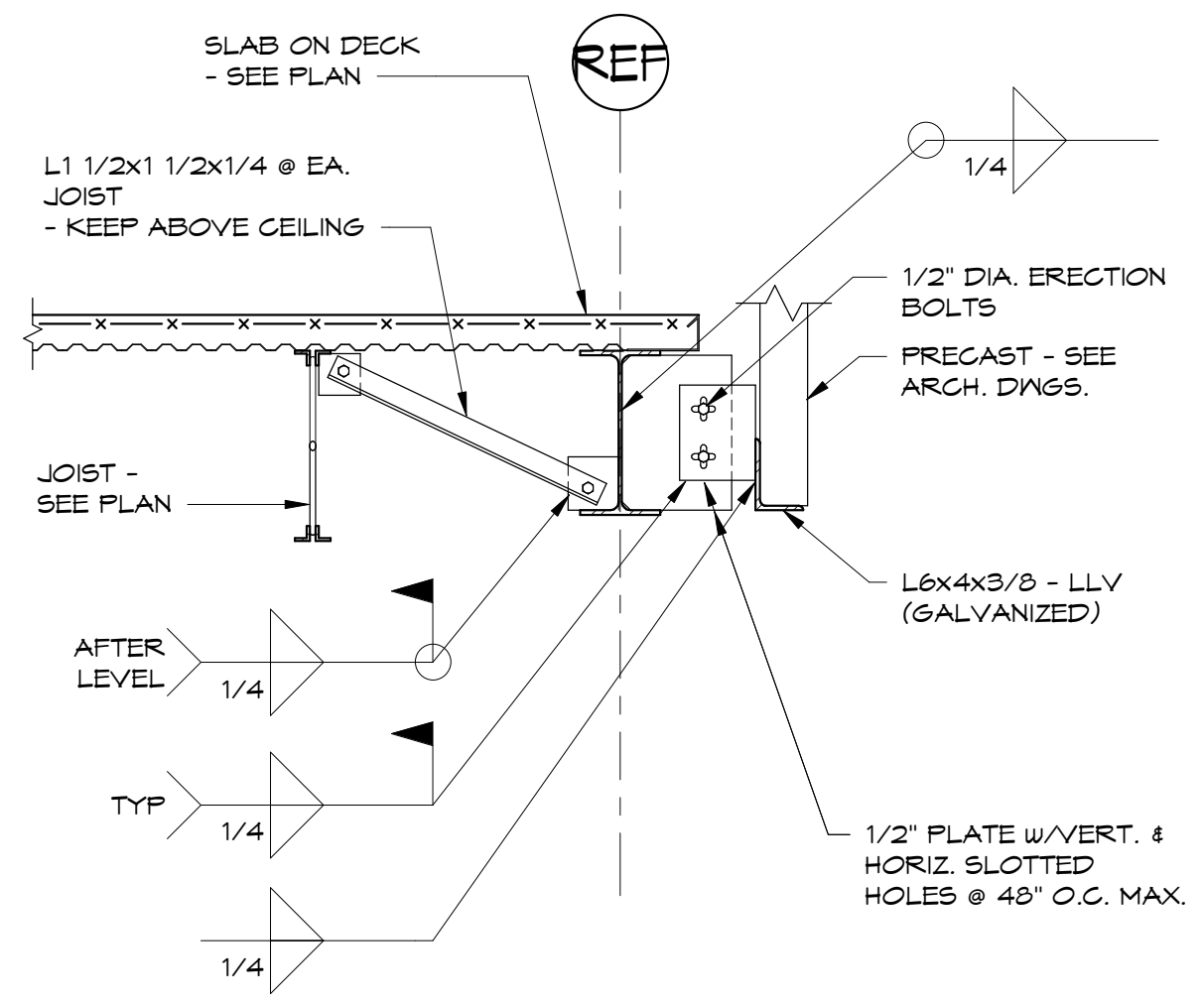
4 SECTION
55.02 3/4" = 1'-0"



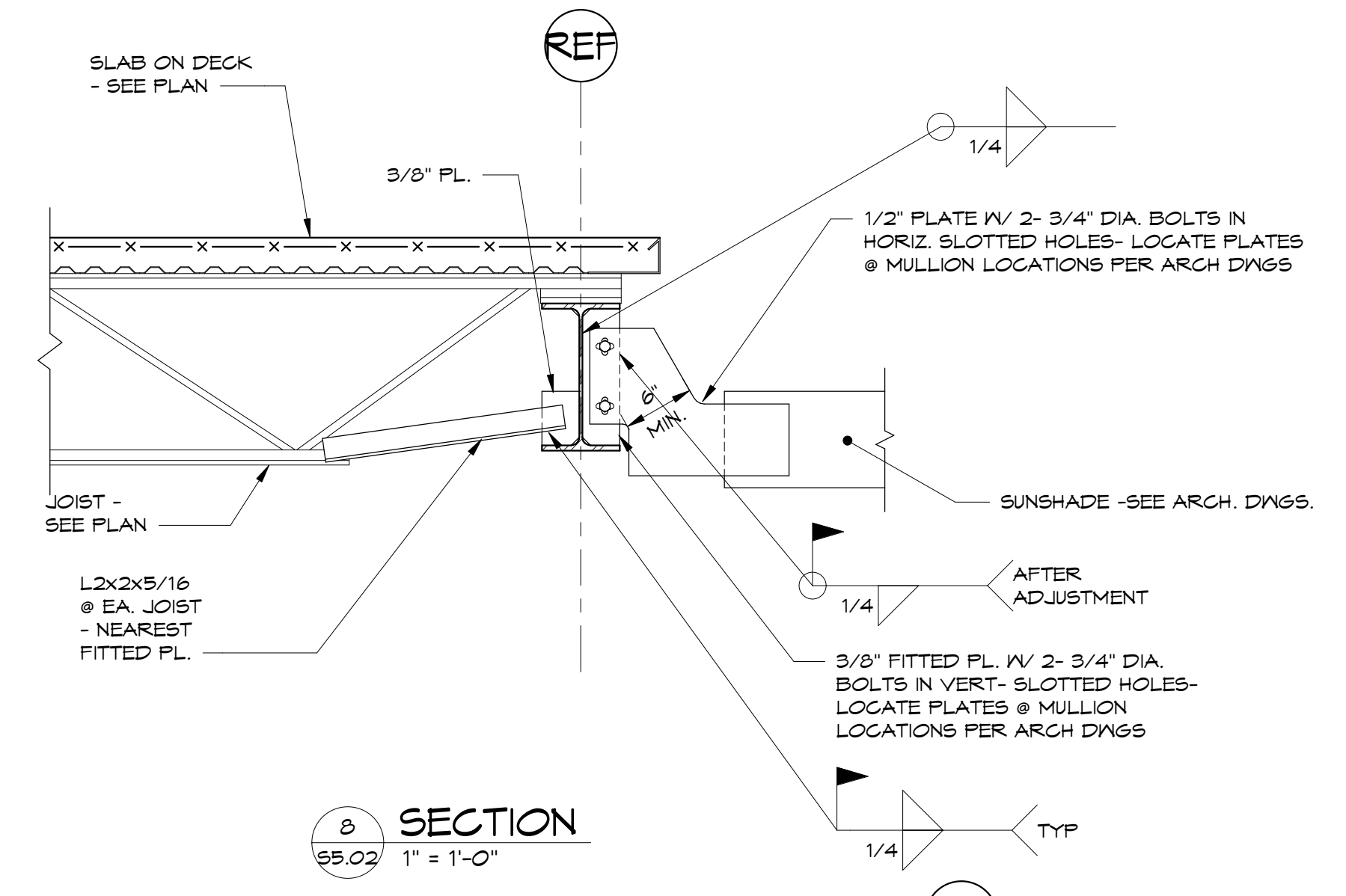
5 SECTION
55.02 3/4" = 1'-0"



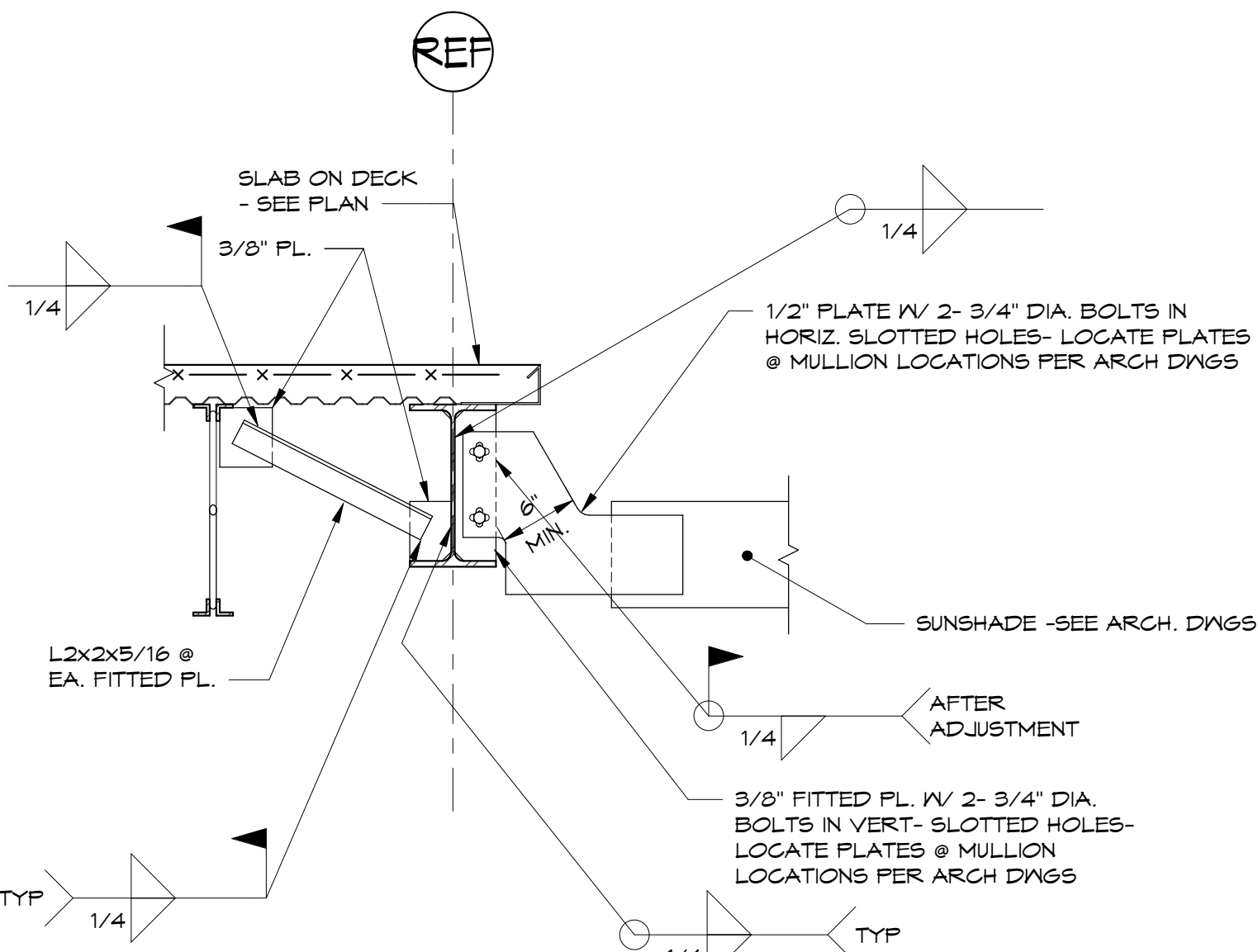
6 SECTION
55.02 3/4" = 1'-0"



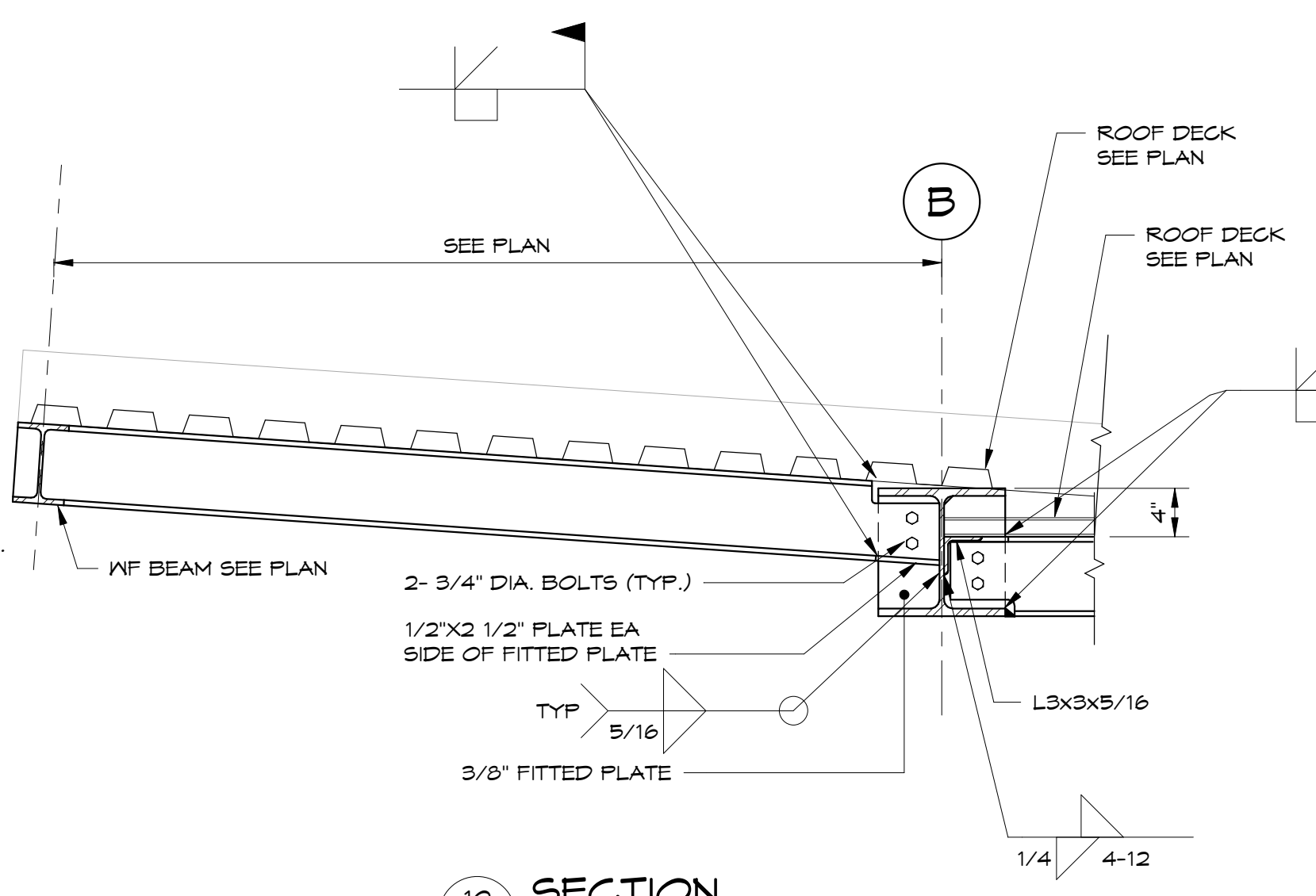
7 SECTION
55.02 3/4" = 1'-0"



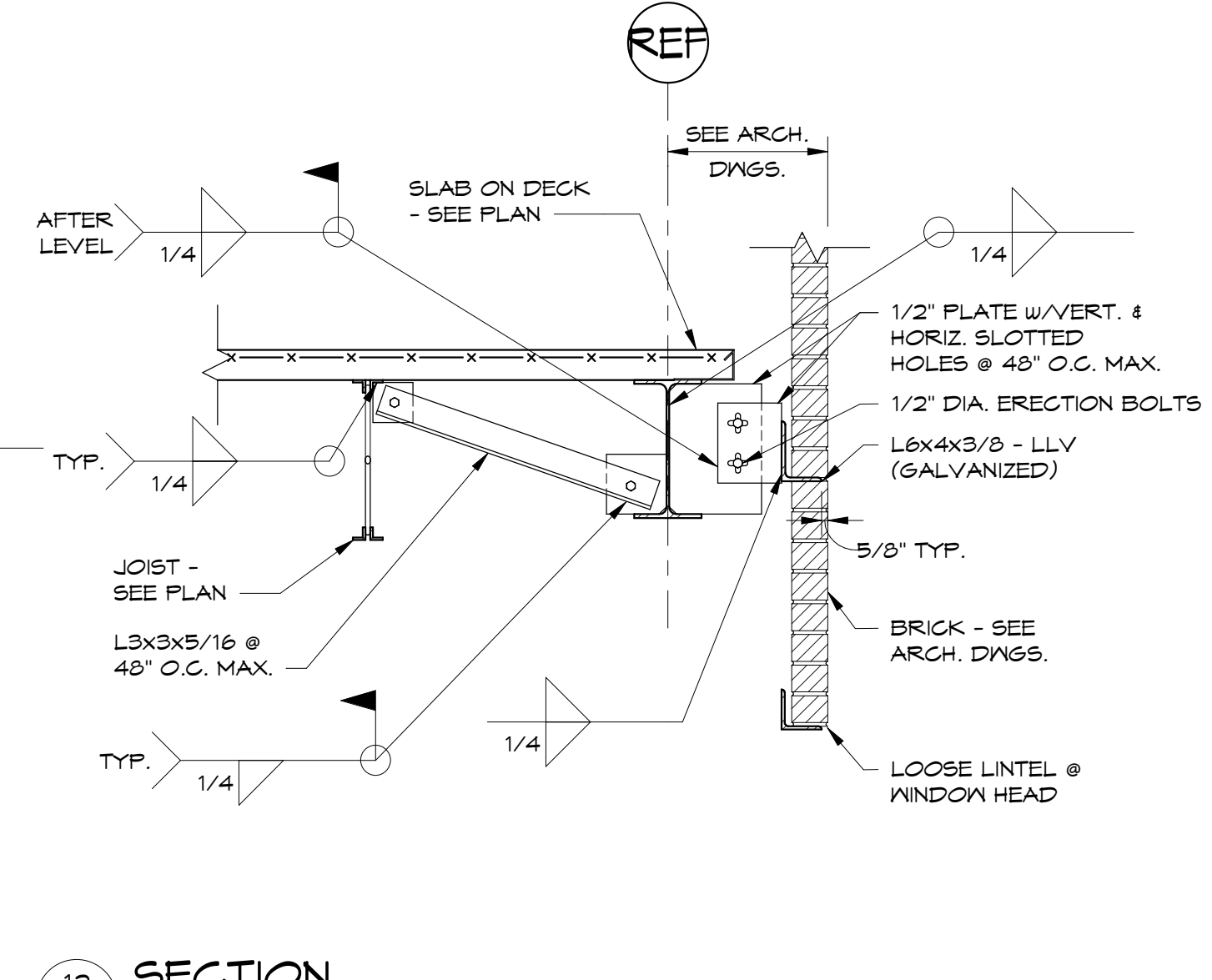
8 SECTION
55.02 1" = 1'-0"



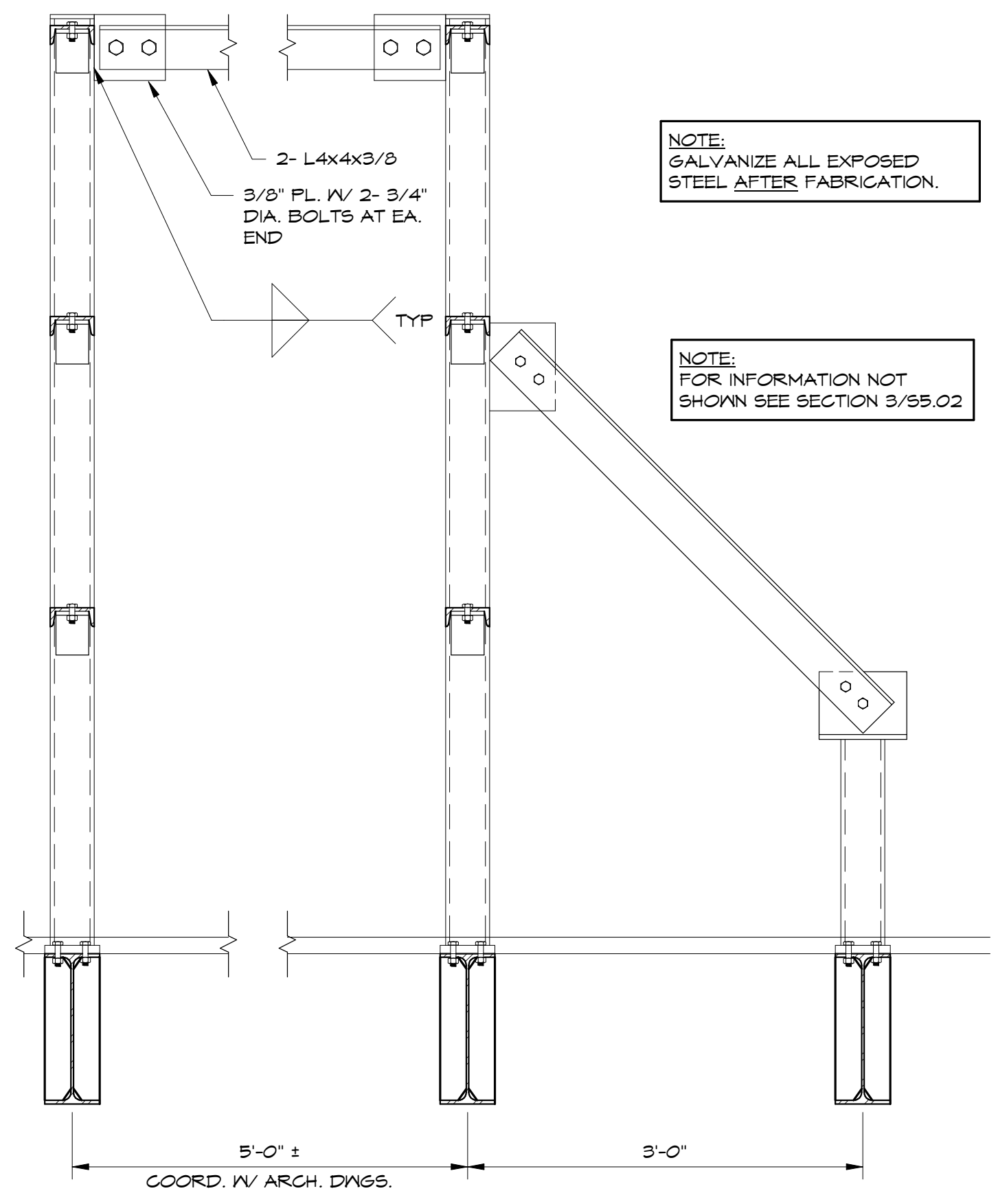
9 SECTION
55.02 1" = 1'-0"



10 SECTION
55.02 1" = 1'-0"

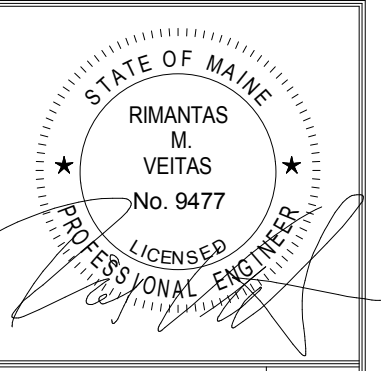


12 SECTION
55.02 3/4" = 1'-0"



11 SECTION
55.02 1" = 1'-0"

ROOF TOP SCREEN



Prepared For:
EssexNorth Portland LLC
P.O. Box 394
Topsfield, MA 01983

Consultant:
VEITAS VEITAS
engineers
680 Centre Street, Suite 101
Braintree, Massachusetts 02184
TEL: 781-843-2863 FAX: 781-849-2055

Architect:
ARCHETYPE
architects
48 Union Wharf Portland, Maine 04101
(207) 772-6022 Fax (207) 772-4056

Project:
THAMES STREET CONDOMINIUM
20 Thames Street, Portland Maine

Revisions:

1	06/30/17	Steel Bid - Addendum #1
2	07/21/17	BID SET
4	08/15/17	Addendum #2
6	09/07/17	Revisions
7	09/15/17	Revisions

Date: **JULY 2017**
Scale: **As indicated**

SECTIONS

S5.02