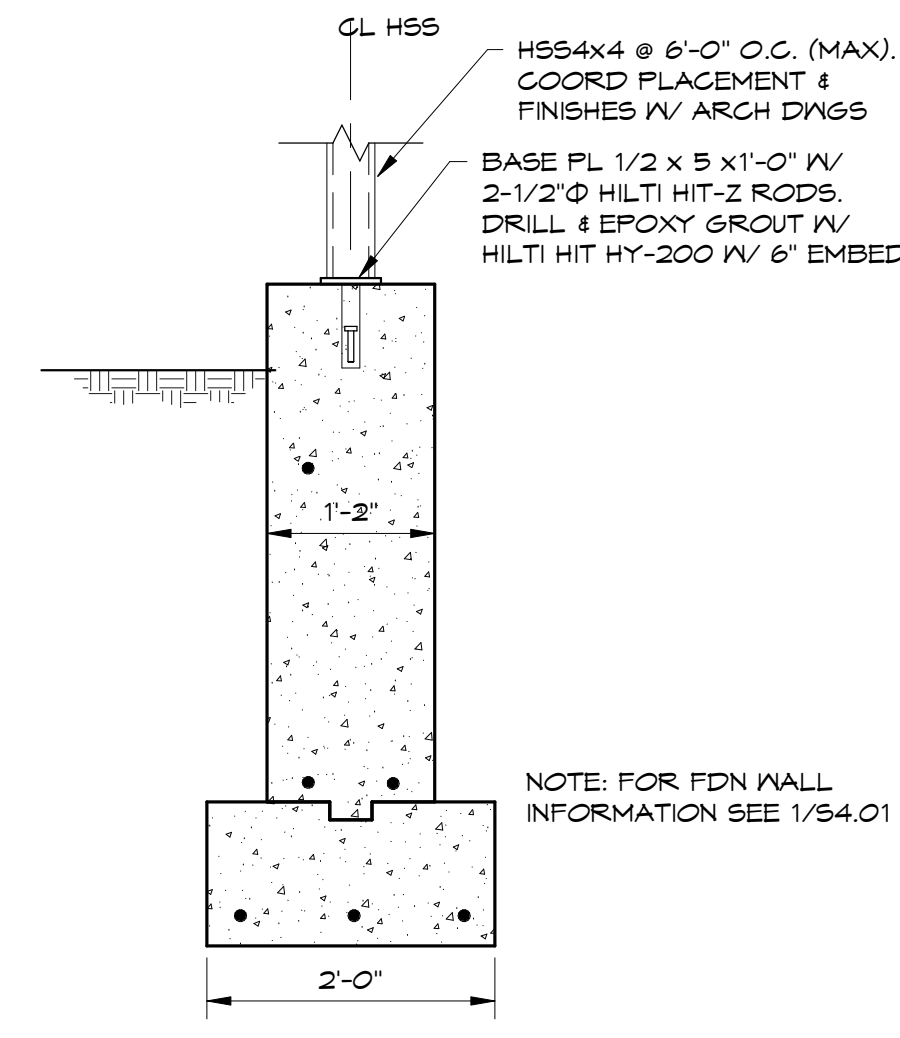
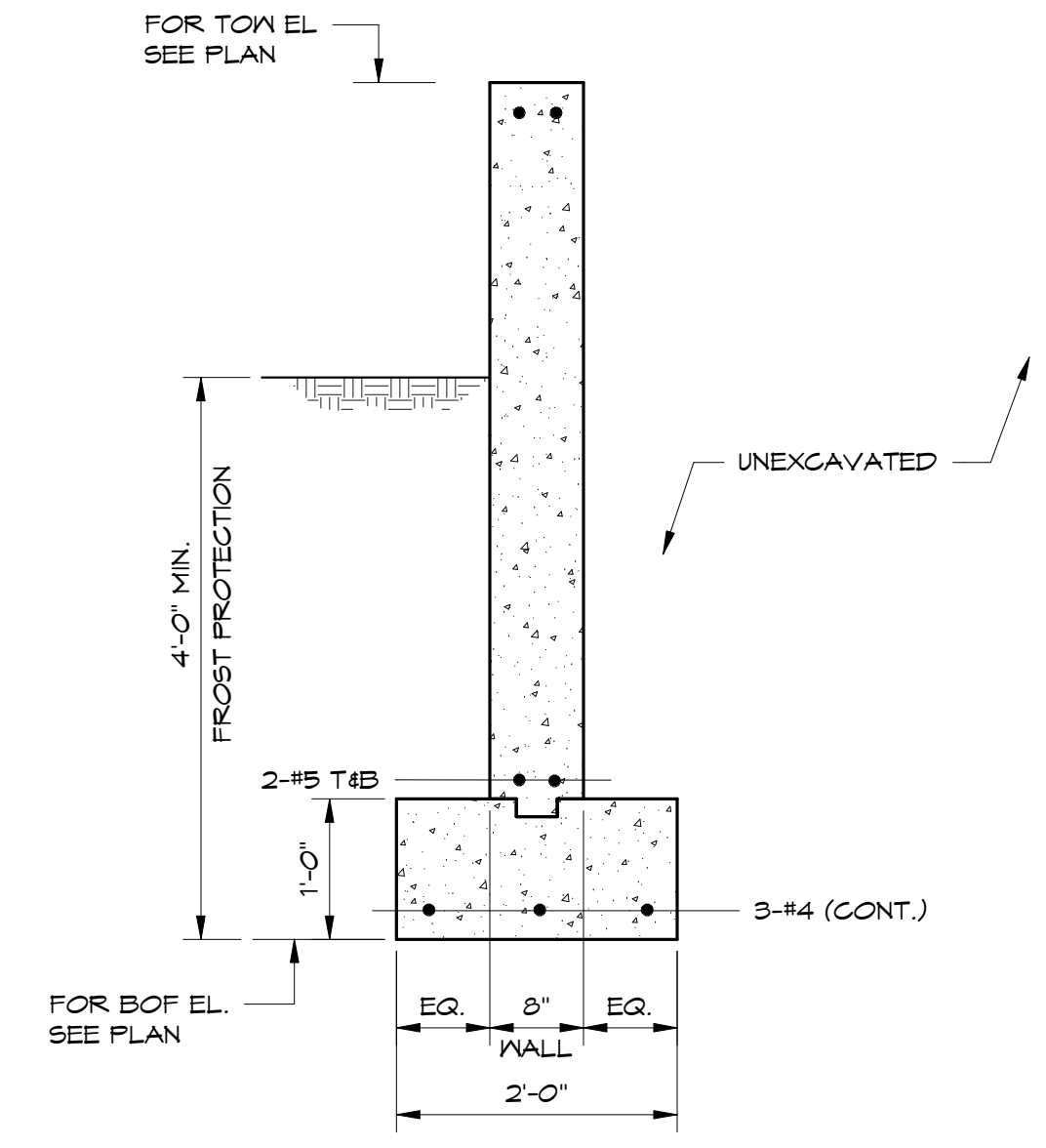
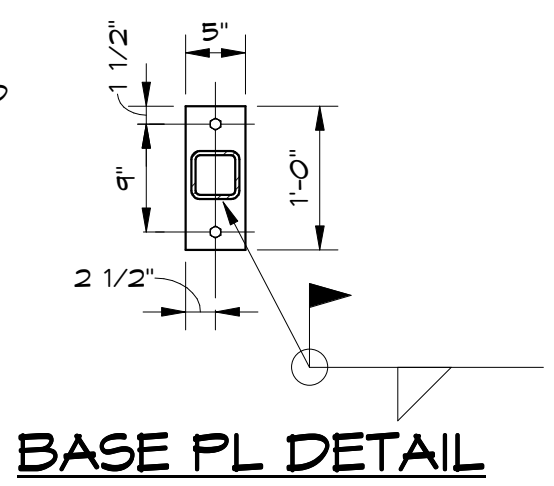


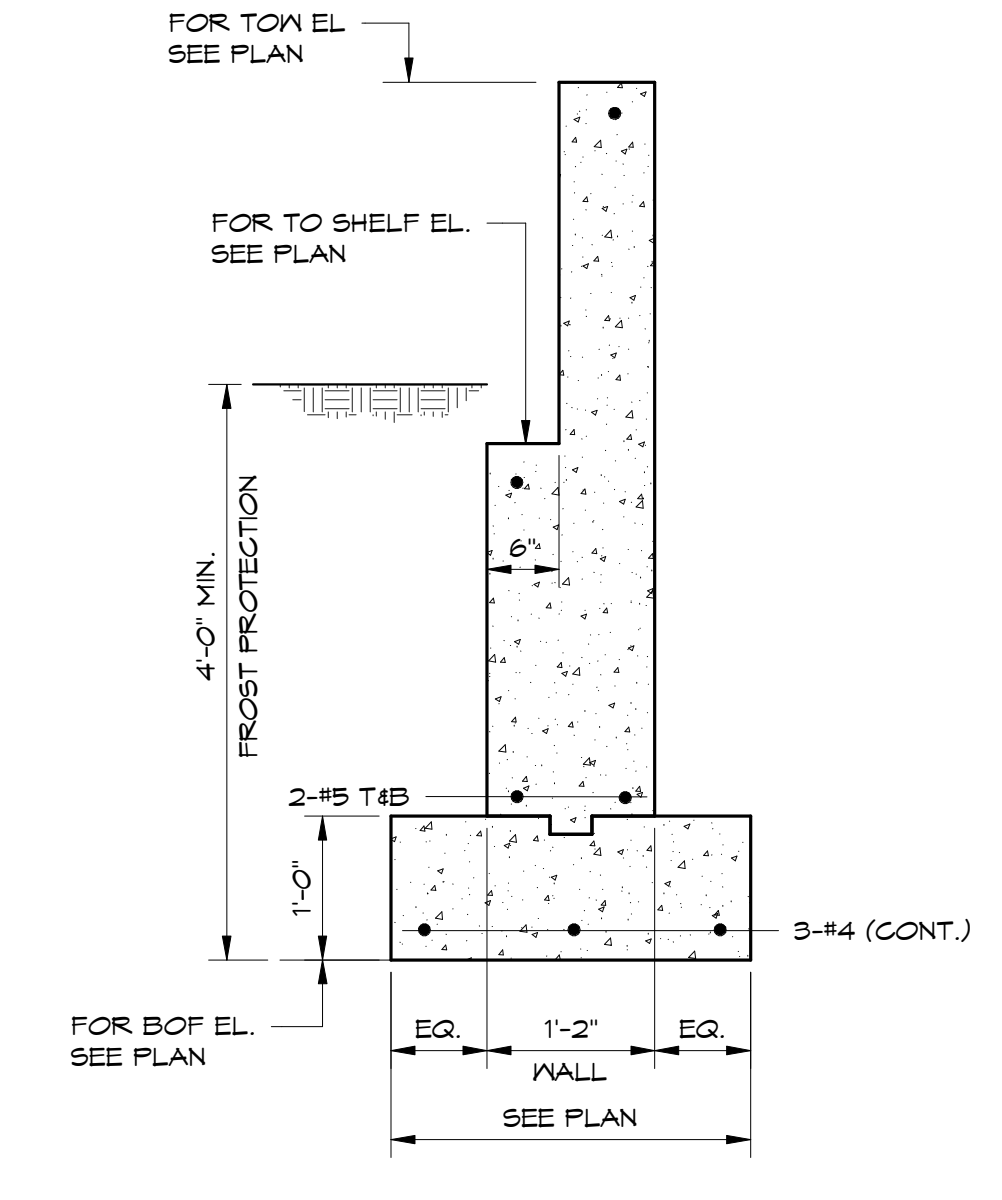
1 SECTION
S4.02 1/2" = 1'-0"



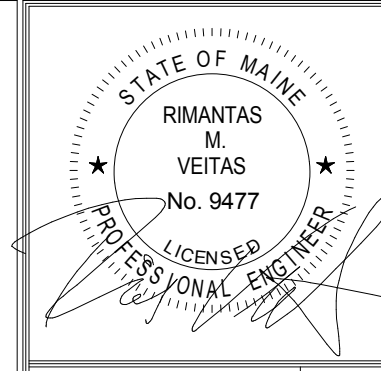
2 SECTION
S4.02 3/4" = 1'-0"



3 SECTION
S4.02 3/4" = 1'-0"



4 SECTION
S4.02 3/4" = 1'-0"



Prepared For:
**EssexNorth
Portland LLC**
P.O. Box 394
Topsfield, MA 01983

Consultant:
VEITAS VEITAS
engineers
680 Centre Street, Suite 101
Braintree, Massachusetts 02184
TEL: 781-843-2863 FAX: 781-849-2055

Architect:
ARCHETYPE
a r c h i t e c t s
48 Union Wharf Portland, Maine 04101
(207) 772-6022 Fax (207) 772-4056

Project:
**THAMES STREET
CONDOMINIUM**
20 Thames Street, Portland Maine

Revisions:	1	06/30/17	Steel Bid - Addendum #1
	3	08/03/17	Addendum #1
	4	08/15/17	Addendum #2

Date: **JULY 2017**
Scale: **As indicated**

S4.02

SECTIONS