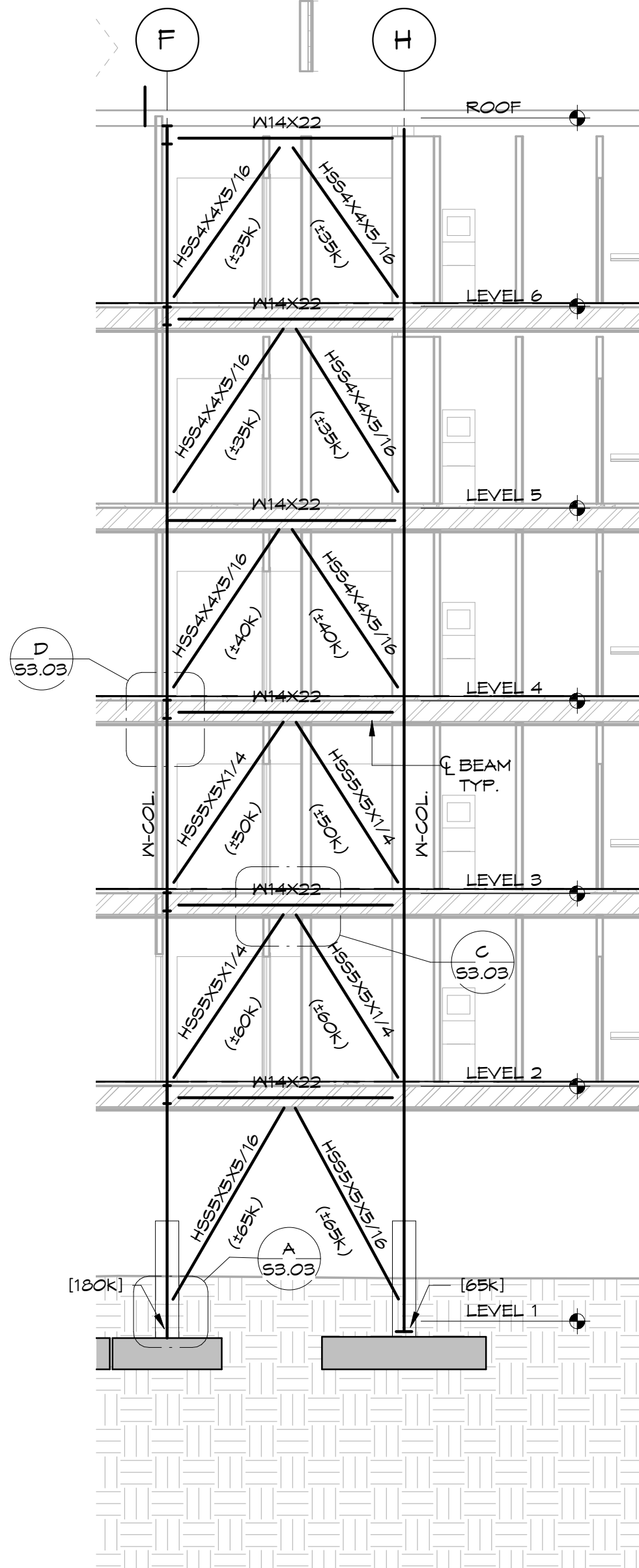
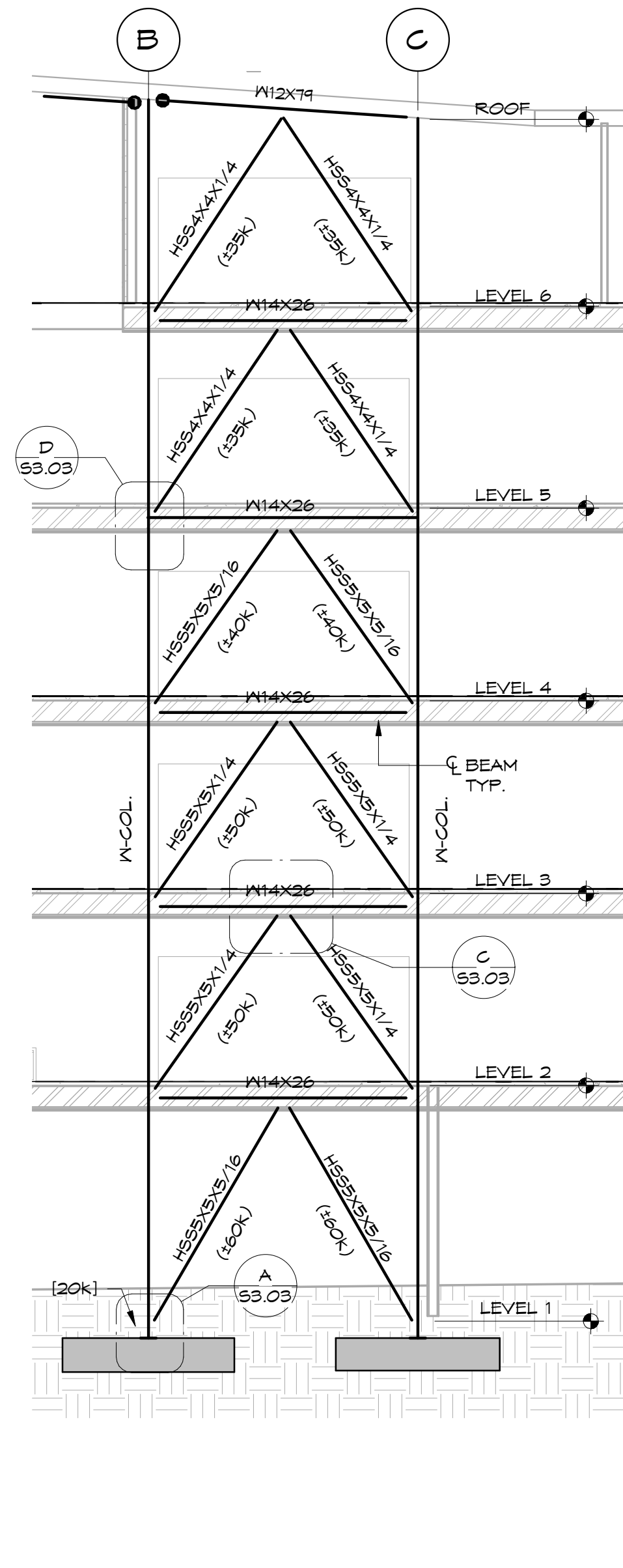


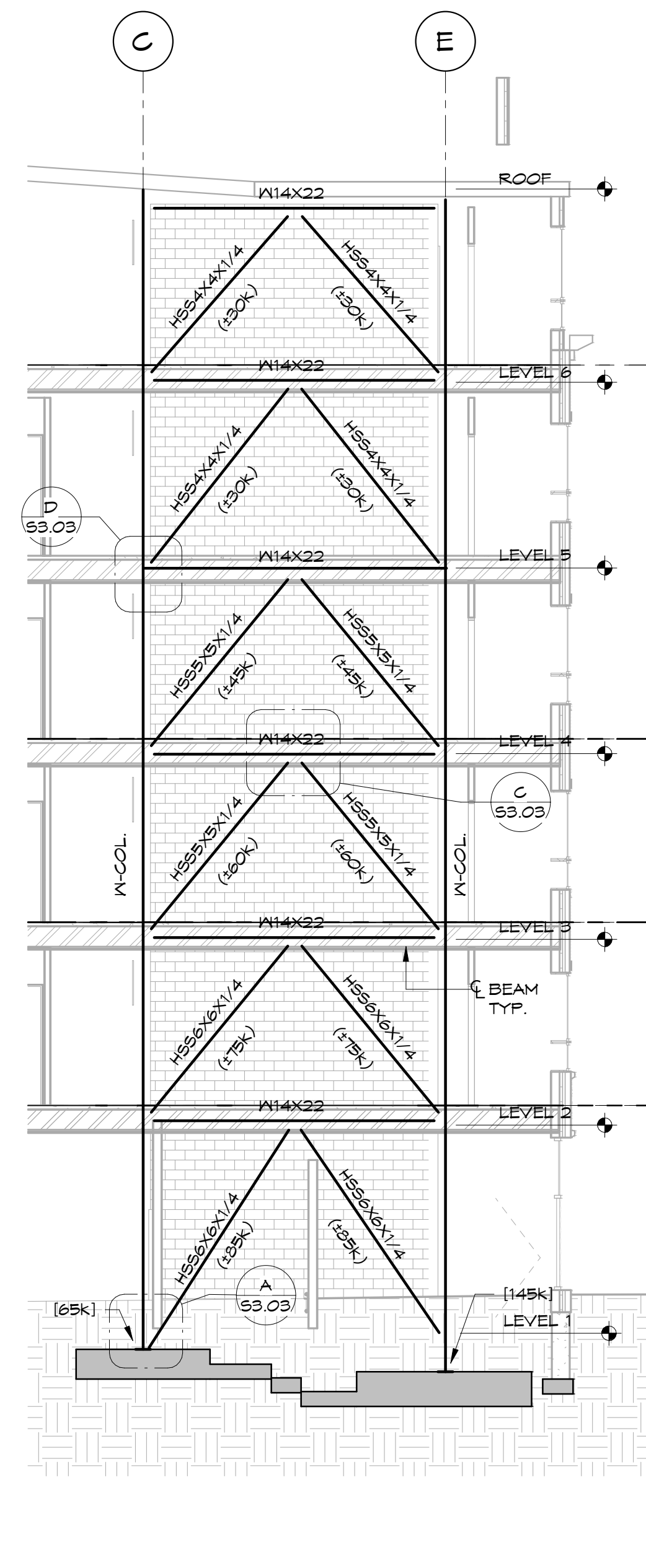
1 BRACE "A" (ALONG GRID 6)  
 S3.04 1/8" = 1'-0"



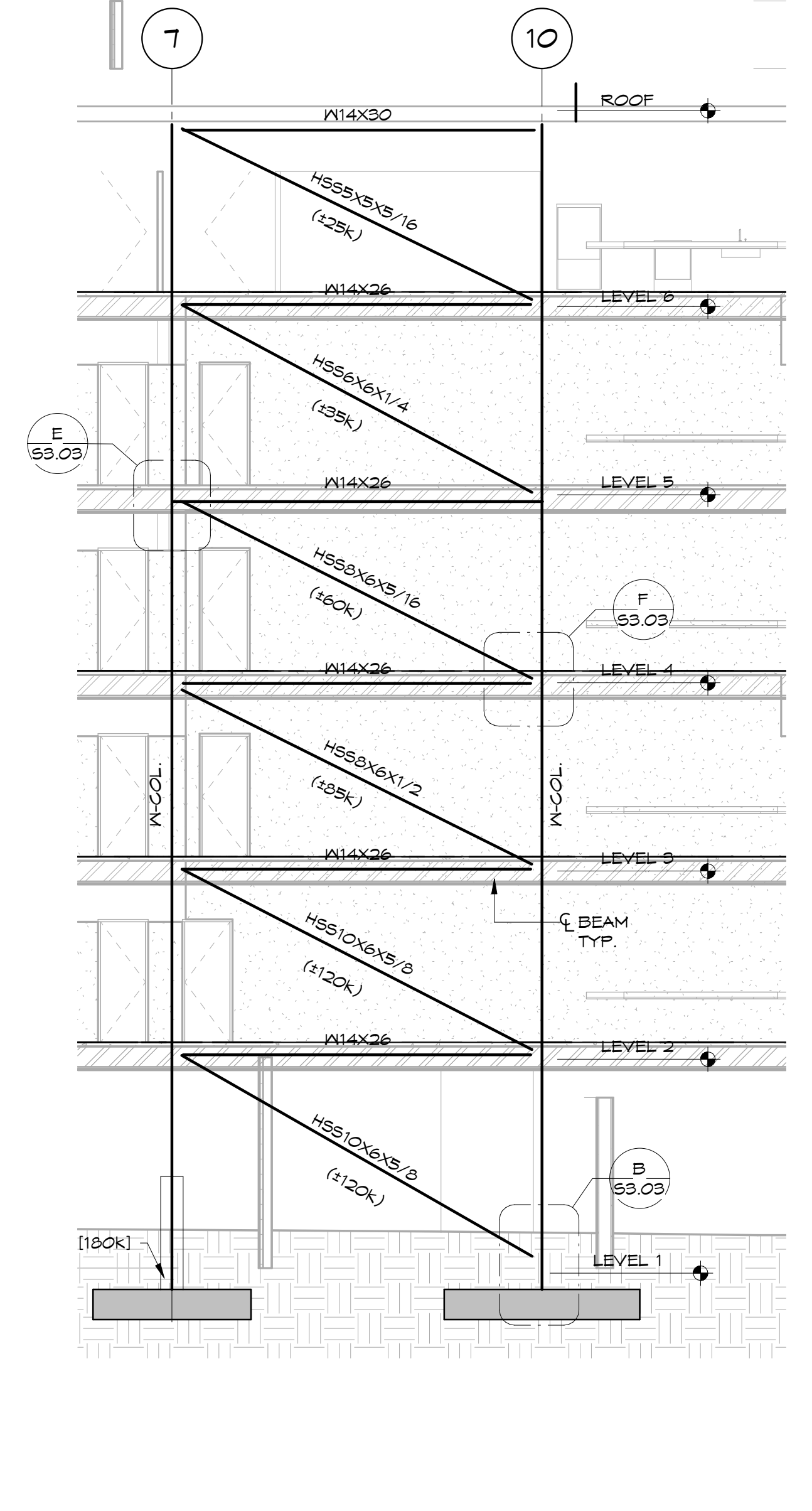
2 BRACE "B" (ALONG GRID 7)  
 S3.04 1/8" = 1'-0"



3 BRACE "C" (ALONG GRID 10)  
 S3.04 1/8" = 1'-0"



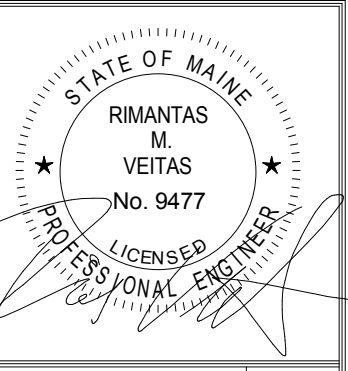
4 BRACE "D" (ALONG GRID 14)  
 S3.04 1/8" = 1'-0"



5 BRACE "E" (ALONG GRID F)  
 S3.04 1/8" = 1'-0"

NOTE  
 (105K) ETC. INDICATES FACTORED (ASD)  
 AXIAL FORCE IN THE BRACE MEMBERS FOR  
 THE USE IN CONNECTION DESIGN. TO  
 CHANGE ASD LOAD TO LRFD MULTIPLY ASD  
 BY 1.5 (ASDx1.5 = LRFD).  
 [105K] ETC. INDICATES NET UPLIFT

BRACE DETAIL NOTES:  
 1. FOR NUMBER, SIZE AND LENGTHS OF  
 ANCHOR BOLTS SEE BASE PLATE DETAILS  
 2. ALL BRACE GUSSET PLATES TO BE  
 5/8" THICK MIN.  
 3. DETAILER TO PROVIDE SIZE AND LENGTH  
 OF FIELD FILLET WELDS OF HSS BRACE  
 TO PLATES ON THE ERECTION DRAWINGS.  
 4. SHEAR CAPACITY OF CONNECTION TO  
 BE BRACING LOAD PLUS BEAM SHEAR  
 INDICATED ON PLANS.  
 5. DETAILER TO REVIEW INSTALLATION  
 OF BRACE MEMBER. SUBMIT DIAGRAM  
 INDICATING HOW BRACE WILL FIT.



Prepared For:  
**EssexNorth  
 Portland LLC**  
 P.O. Box 394  
 Topsfield, MA 01983

Consultant:  
**VEITAS VEITAS**  
 engineers  
 630 Granite Street, Suite 101  
 Braintree, Massachusetts 02184  
 TEL: 781.843.2863 FAX: 781.849.2055

Architect:  
**ARCHITECTYPE**  
 architects  
 48 Union Wharf Portland, Maine 04101  
 (207) 772-6022 Fax (207) 772-4056

Project:  
**THAMES STREET  
 CONDOMINIUM**  
 20 Thames Street, Portland Maine

Revisions:  
 1 06/30/17 Steel Bid - Addendum #1  
 2 07/21/17 BID SET

Date: JULY 2017  
 Scale: 1/8" = 1'-0"  
**BRACE FRAME  
 ELEVATIONS**

**S3.04**