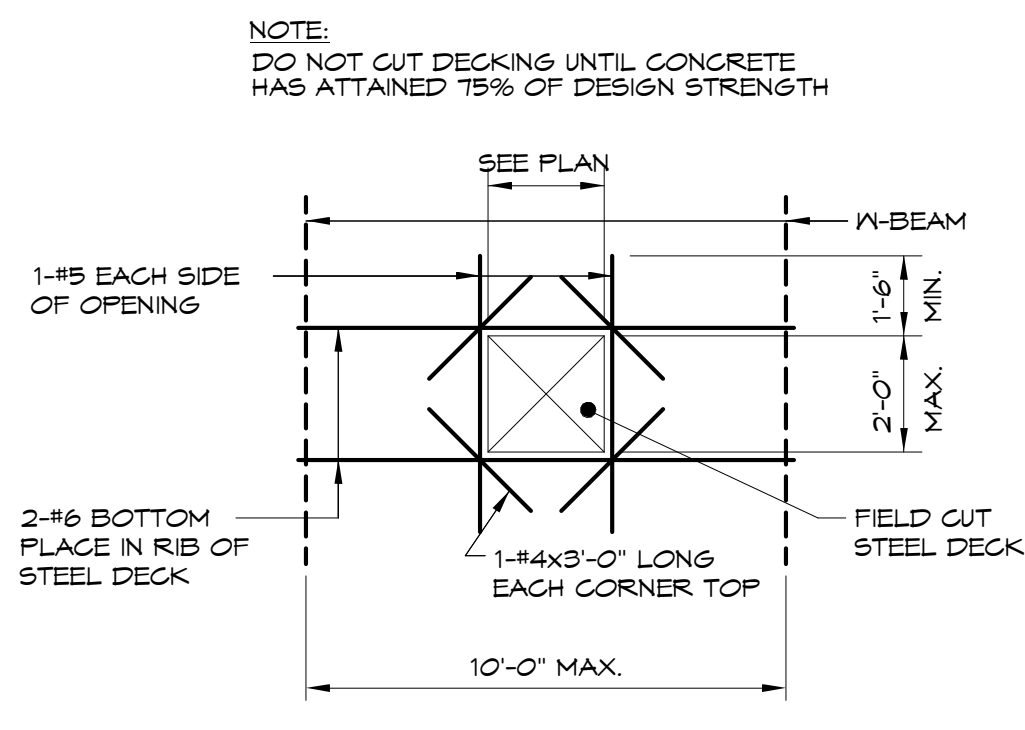
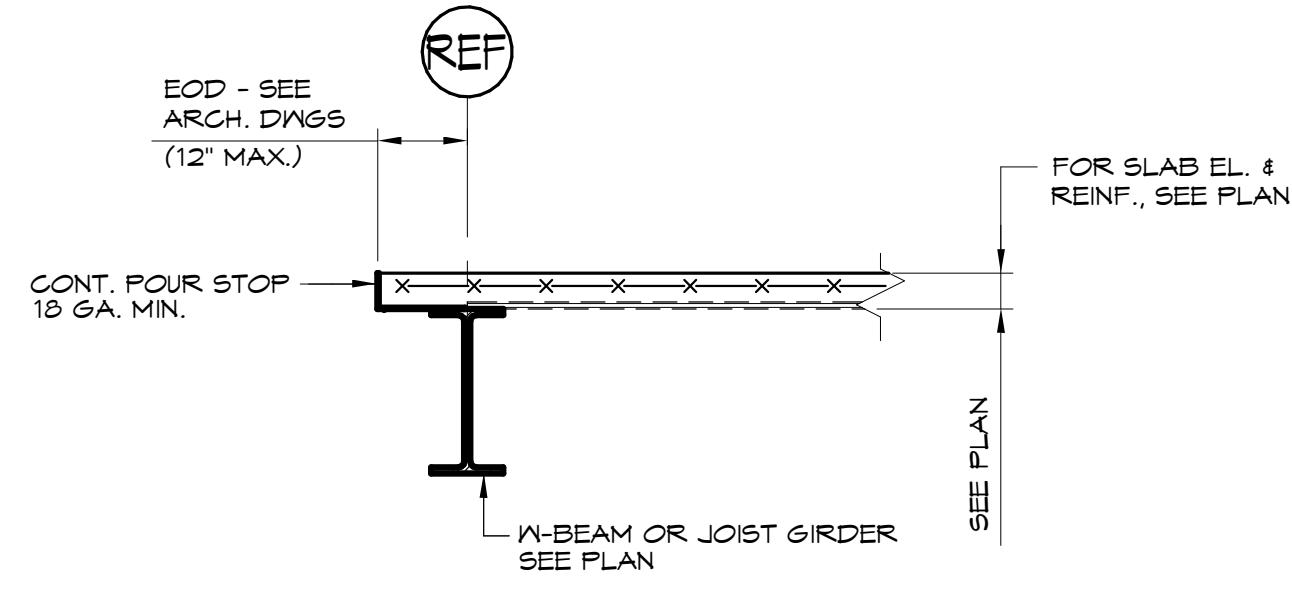


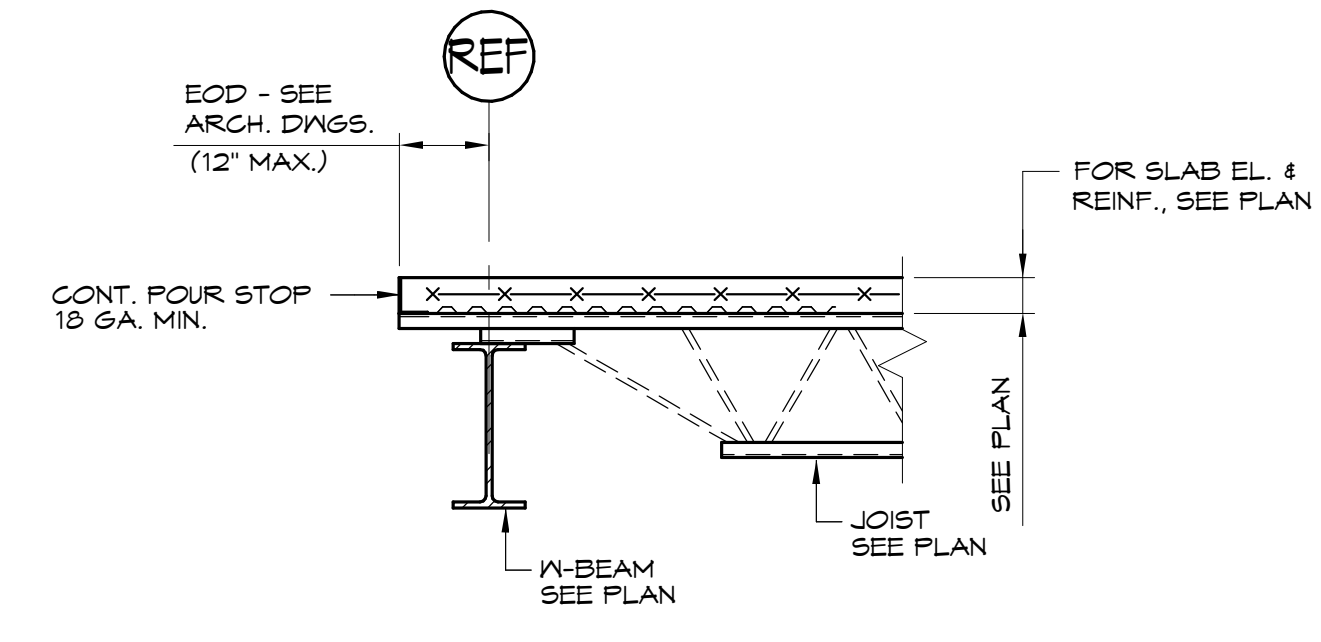
TYPICAL FLOOR OPENING FRAMING DETAIL



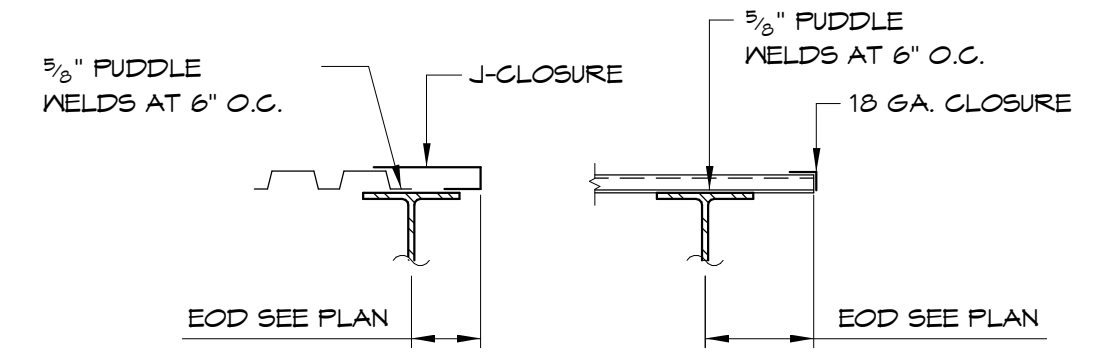
FLOOR OPENING IN CONCRETE ON STEEL DECK



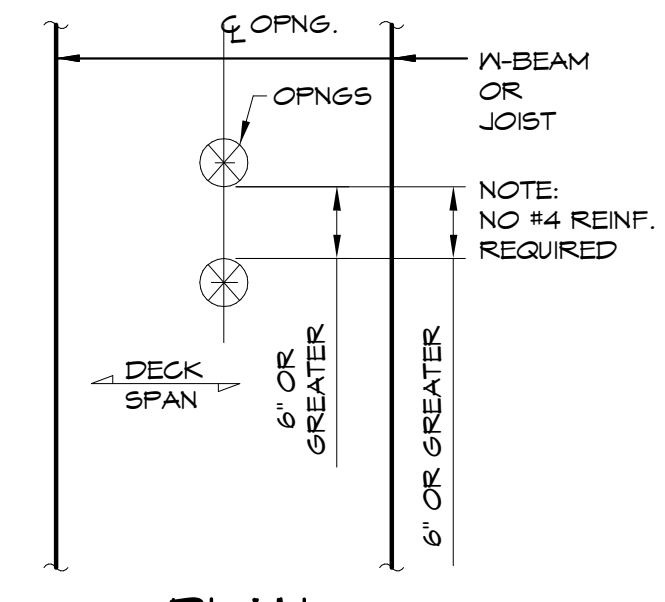
TYPICAL CONCRETE FLOOR EDGE DETAIL (FORM DECK)



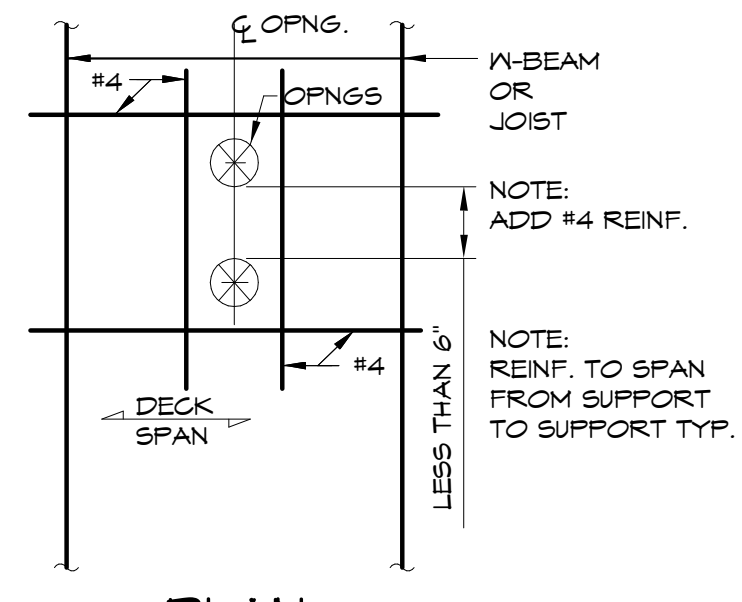
TYPICAL CONCRETE FLOOR EDGE DETAIL (FORM DECK)



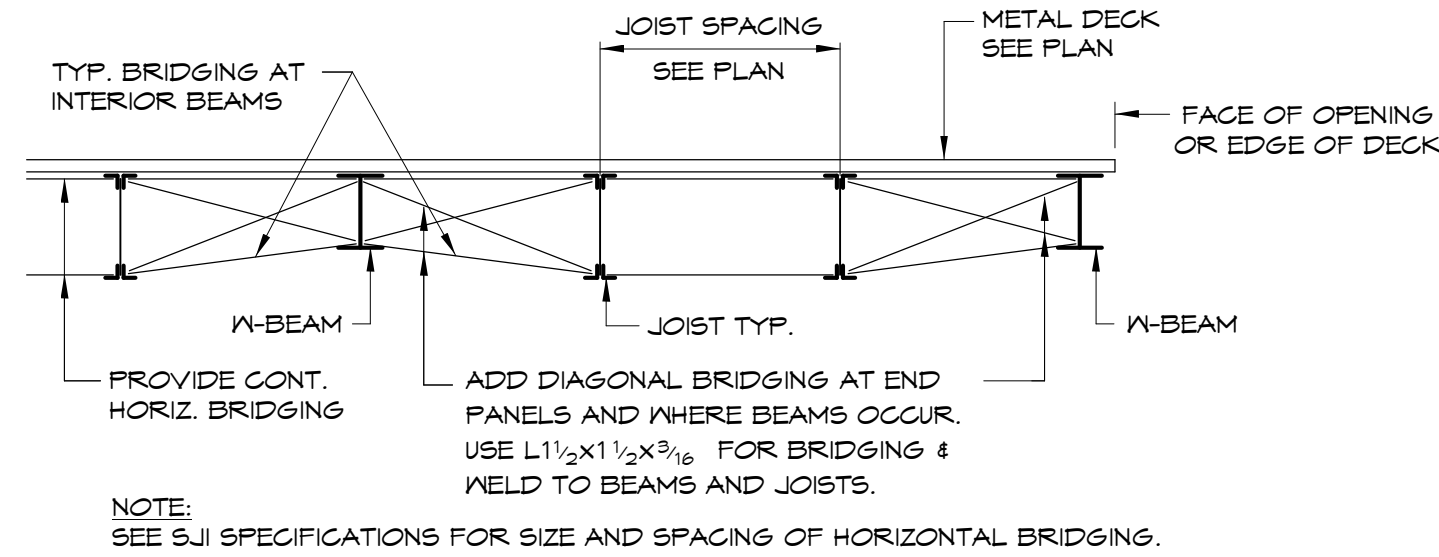
ROOF CONSTRUCTION



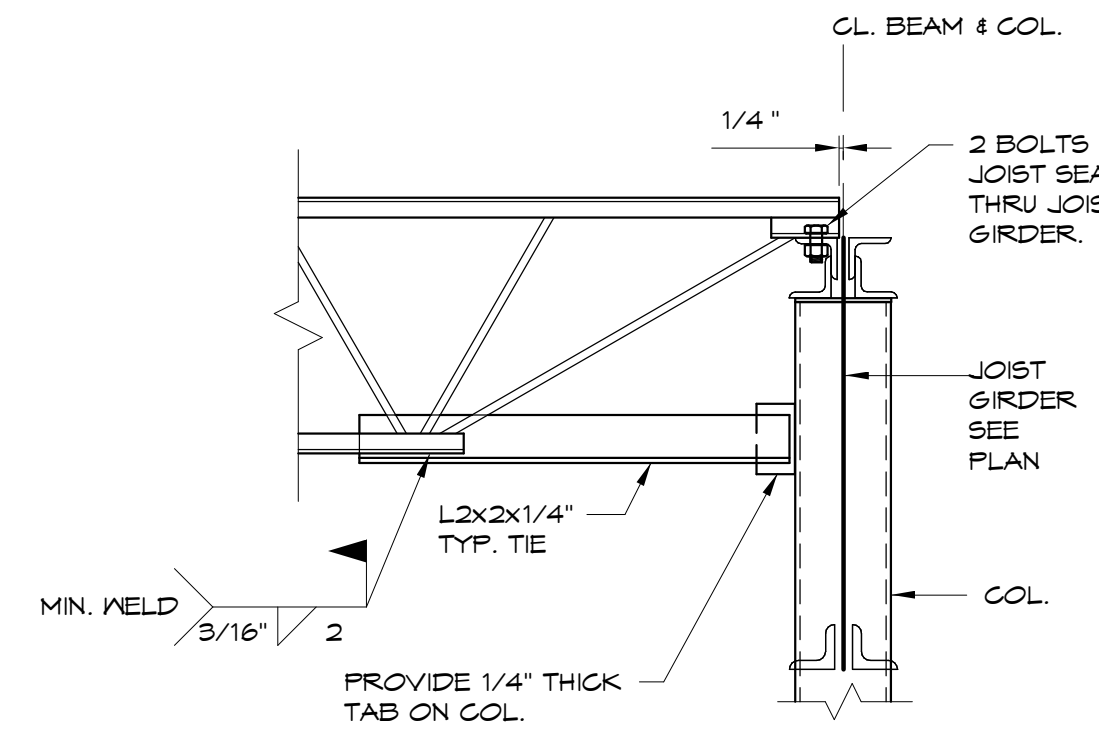
PLAN



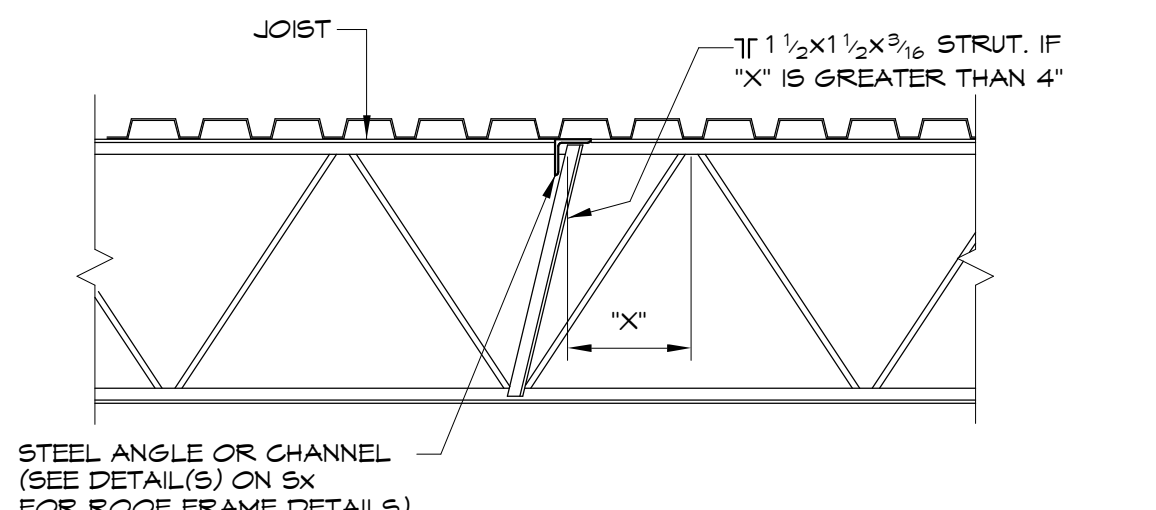
PLAN



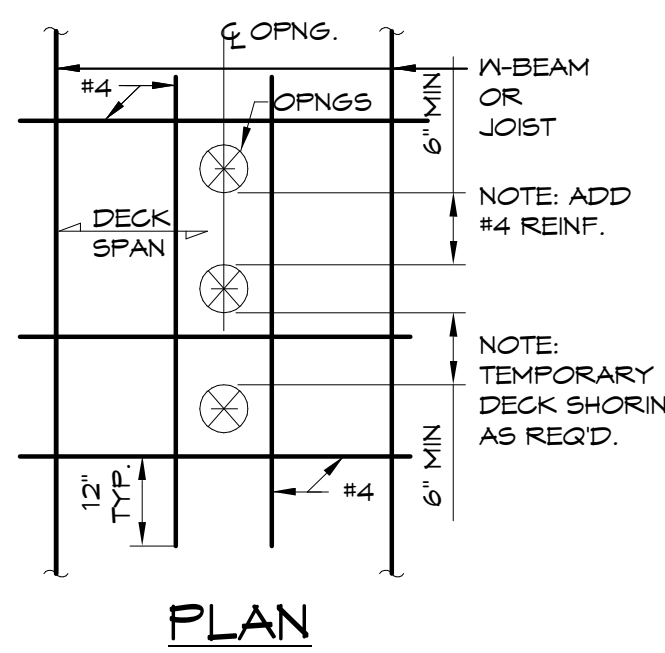
BRIDGING DETAIL AT STEEL JOIST



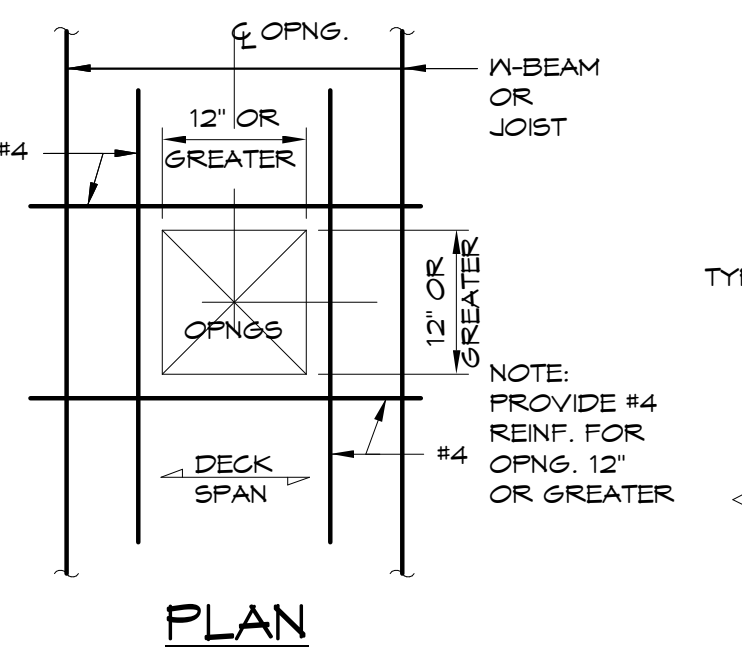
TYPICAL TIE JOIST DETAIL



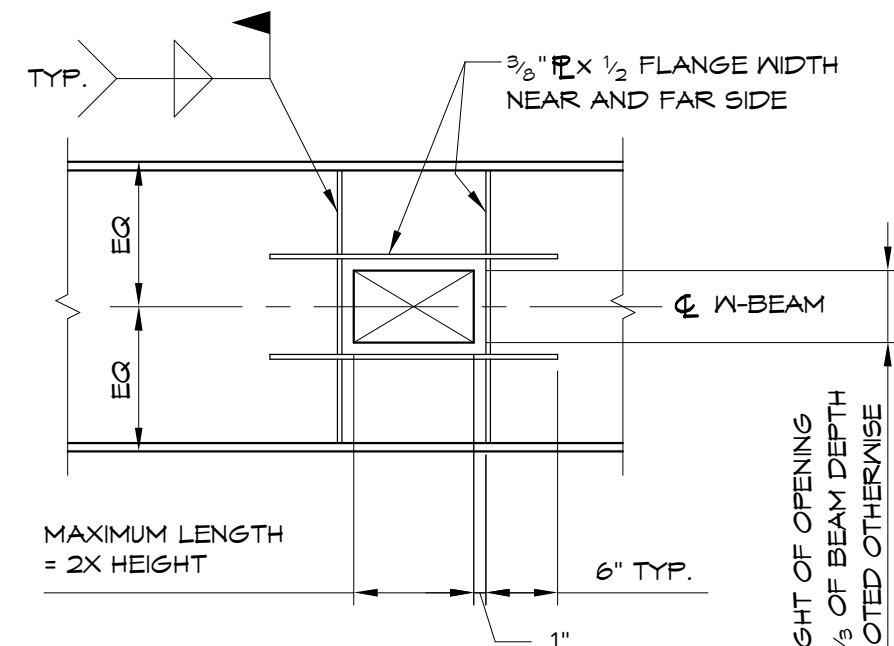
TYPICAL JOIST DETAIL UNDER RTU



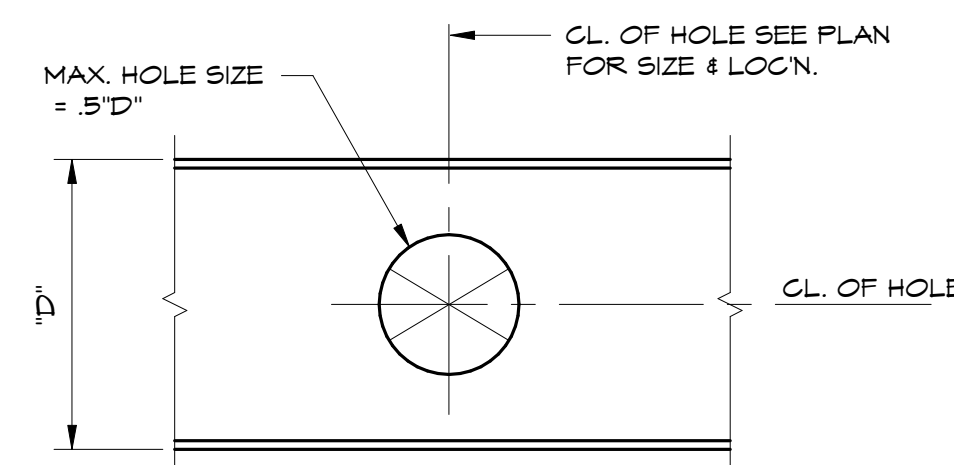
PLAN



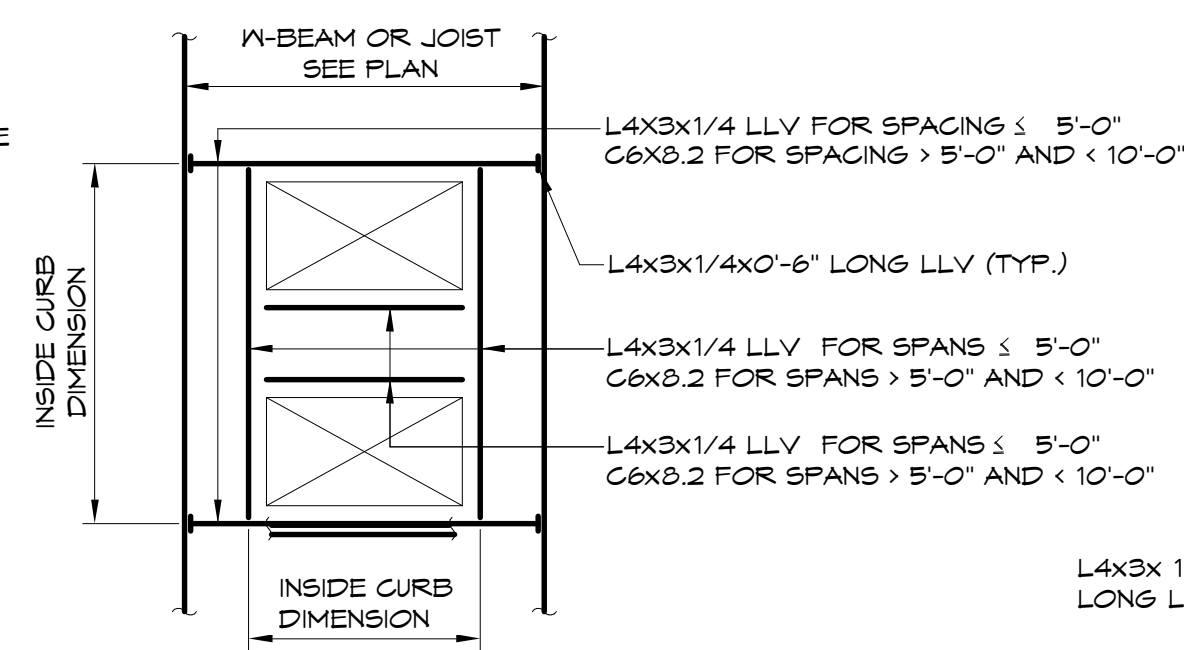
PLAN



BEAM WEB OPENING REINFORCING DETAIL

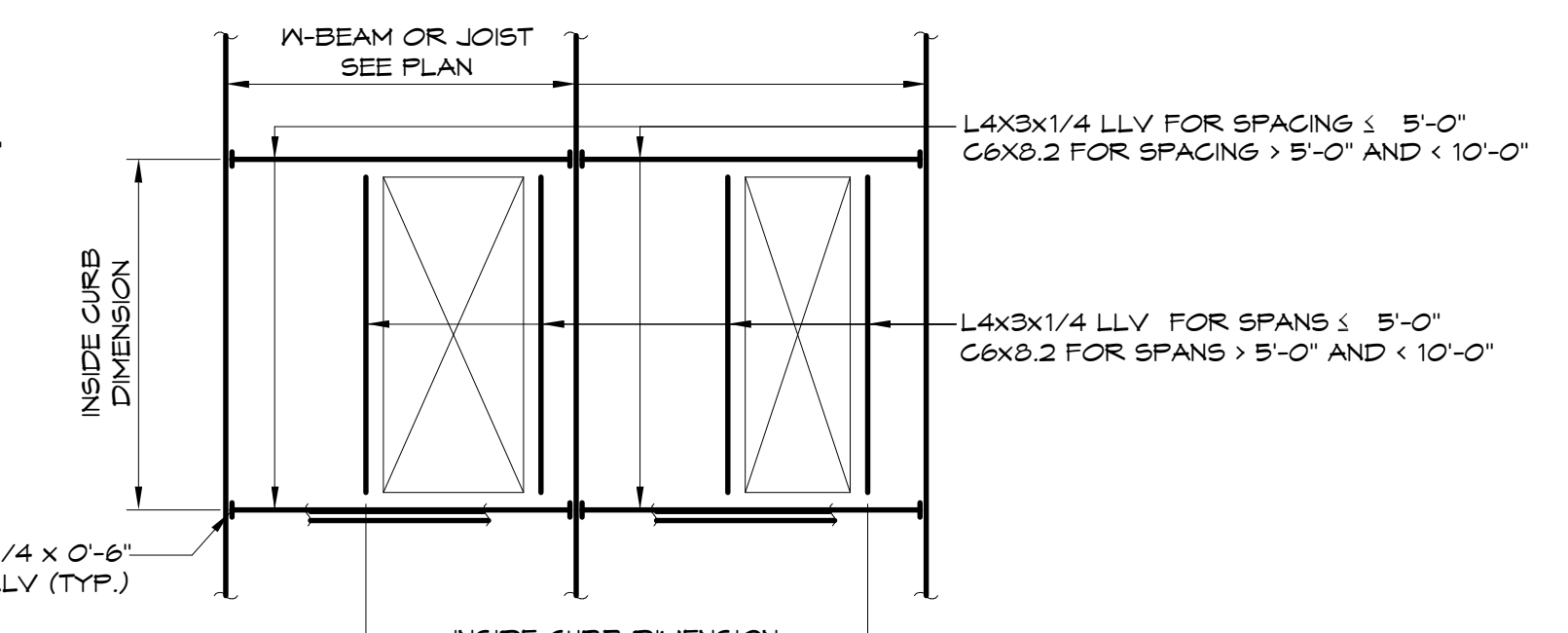


HOLE THRU BEAM WEB DETAIL



ROOF TOP UNIT FRAME DETAIL

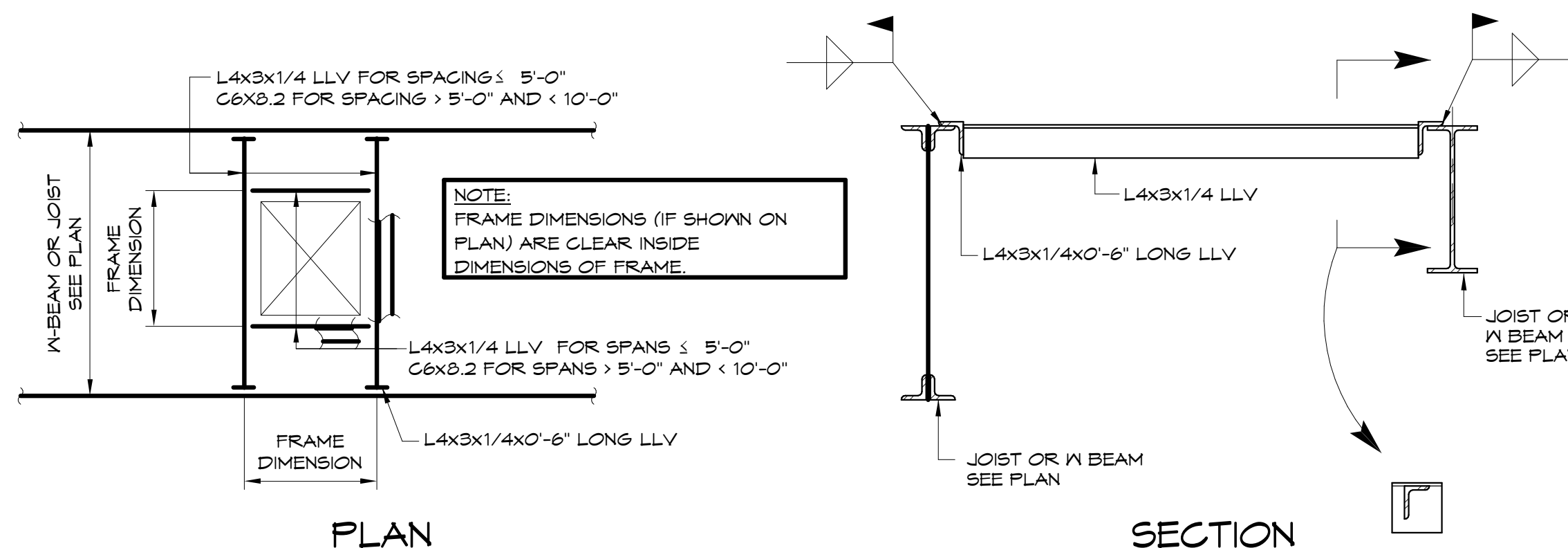
NOTES:
1. FINAL OVERALL FRAME SIZE TO BE COORDINATED BY THE MECH. CONTRACTOR & THE G.C.



TYPICAL SLEEVE OPENING REINFORCING DETAIL IN CONCRETE ON STEEL DECK

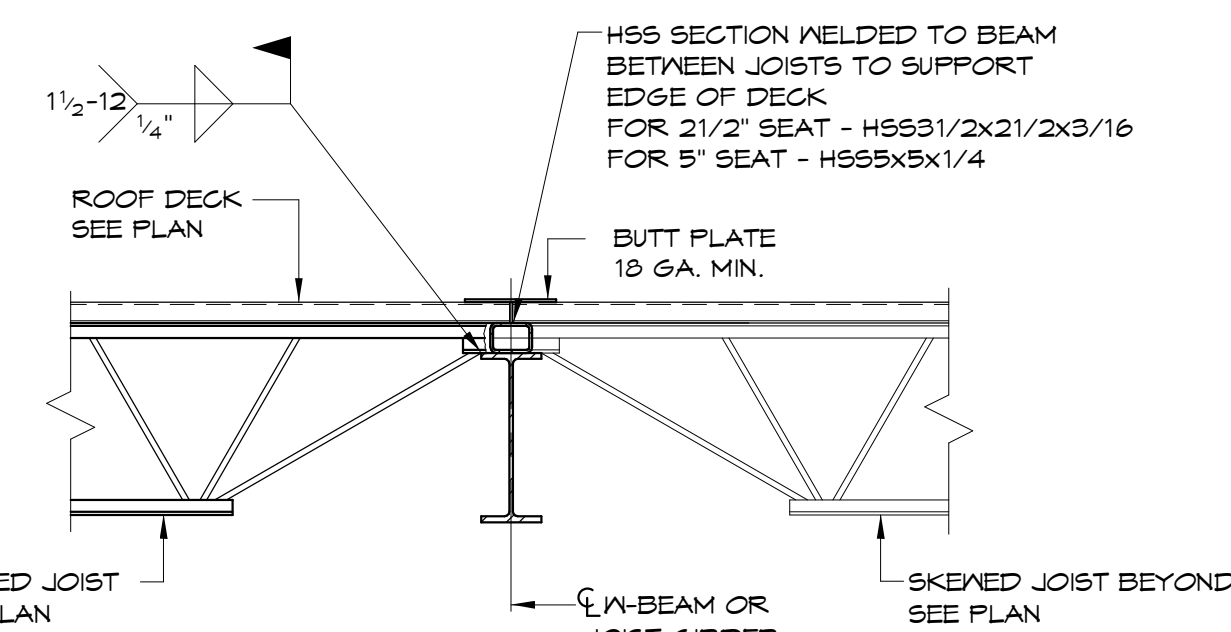
NOTES:
1. APPLIES ONLY TO OPENINGS IN THE MIDDLE THIRD OF BEAM SPAN.
2. OPENINGS CANNOT BE MADE AT ENDS OF BEAMS WITHOUT THE APPROVAL OF THE ENGINEER.

NOTES:
1. APPLIES ONLY TO OPENINGS IN THE MIDDLE THIRD OF BEAM DEPTH ('D').
2. OPENINGS CANNOT BE MADE WITHIN 2x'D' OR 10% OF SPAN FROM ENDS OF BEAM.

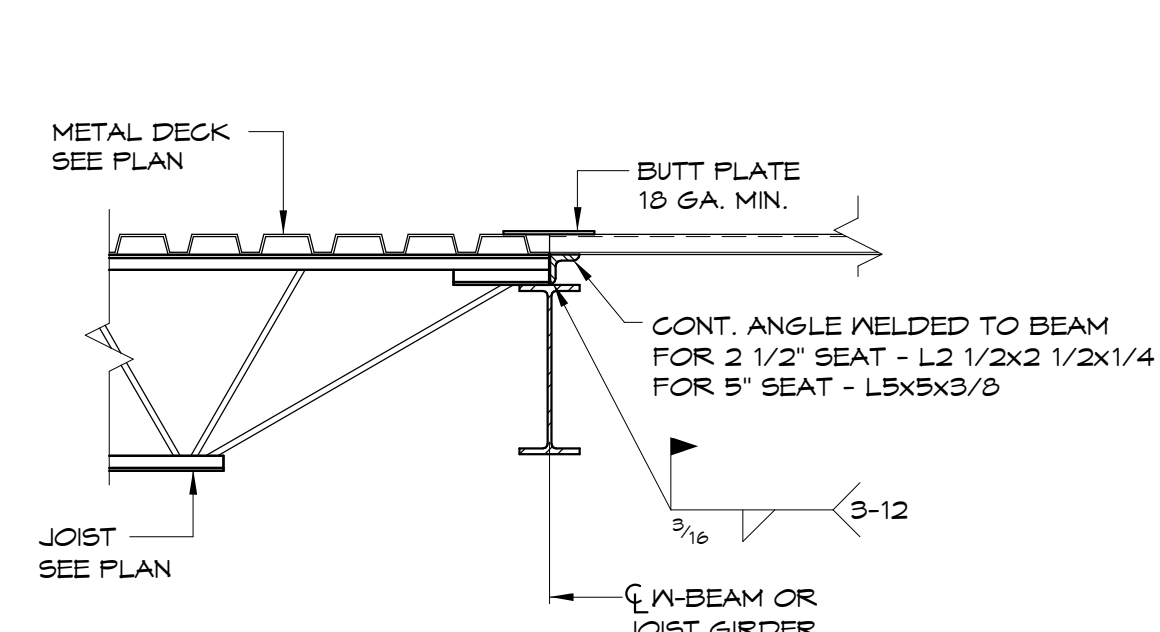


TYPICAL ROOF OPENING FRAMING

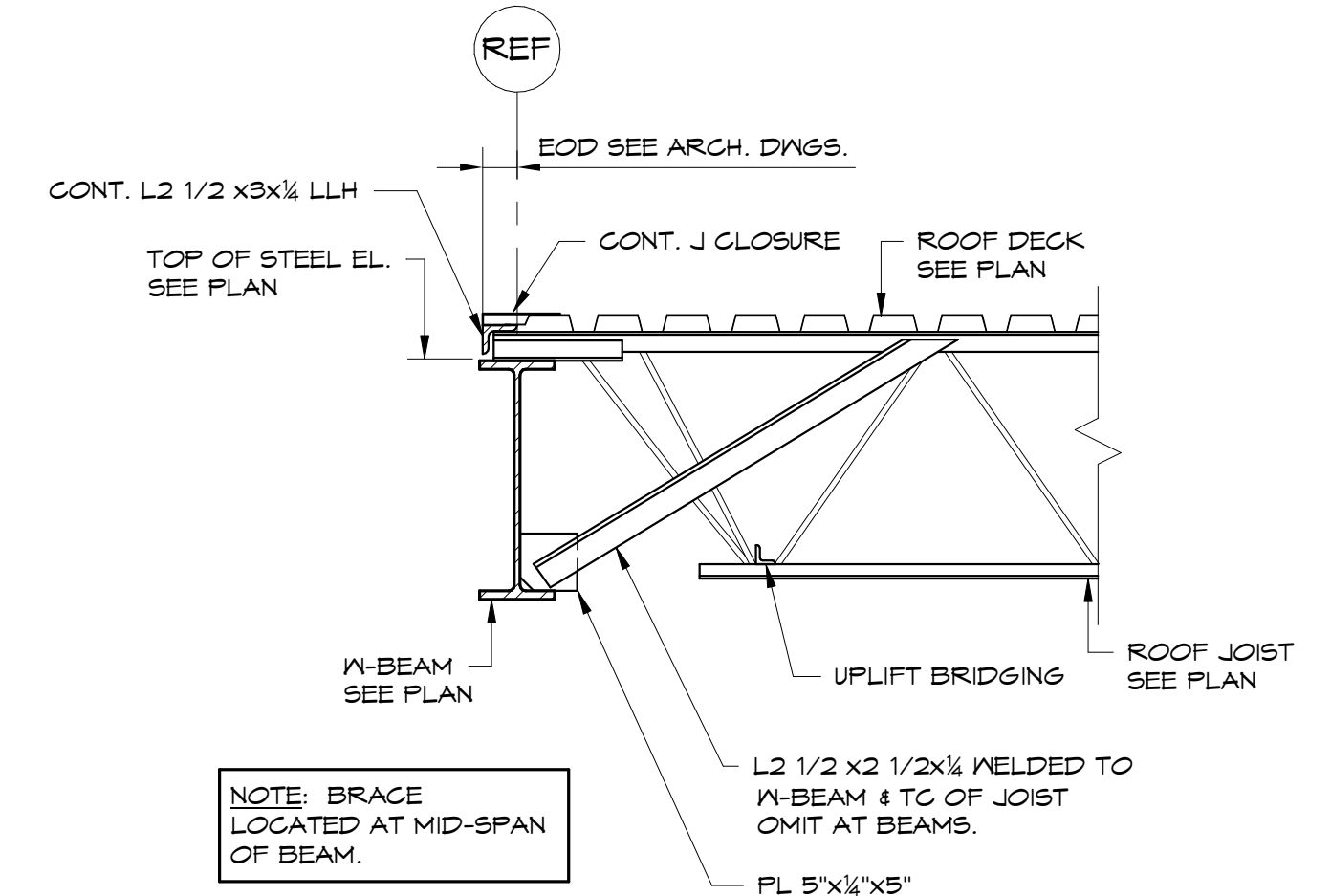
NOTE: REQUIRED AT ALL ROOF DRAINS, SEE PLANS-RD.



SKewed CHANGE IN DIRECTION OF DECK AT ROOF



CHANGE IN DIRECTION OF DECK



ROOF JOIST DETAIL

STATE OF MASSACHUSETTS
RMANTAS M. VEITAS
No. 9477
LICENSED PROFESSIONAL ENGINEER

Prepared For: **EssexNorth Portland LLC**
P.O. Box 394
Topsfield, MA 01983

Consultant: **VEITAS VEITAS ARCHITECTS**
680 Granite Street, Suite 101
Braintree, Massachusetts 02184
TEL 781-843-2863 FAX 781-843-2055

Architect: **ARCHITECTURE**
48 Union Wharf Portland, Maine 04101
(207) 772-6022 Fax (207) 772-4056

Project: **THAMES STREET CONDOMINIUM**
20 Thames Street, Portland Maine

Revisions:

Date: **JULY 2017**

Scale: **As indicated**

TYPICAL DETAILS

S2.05