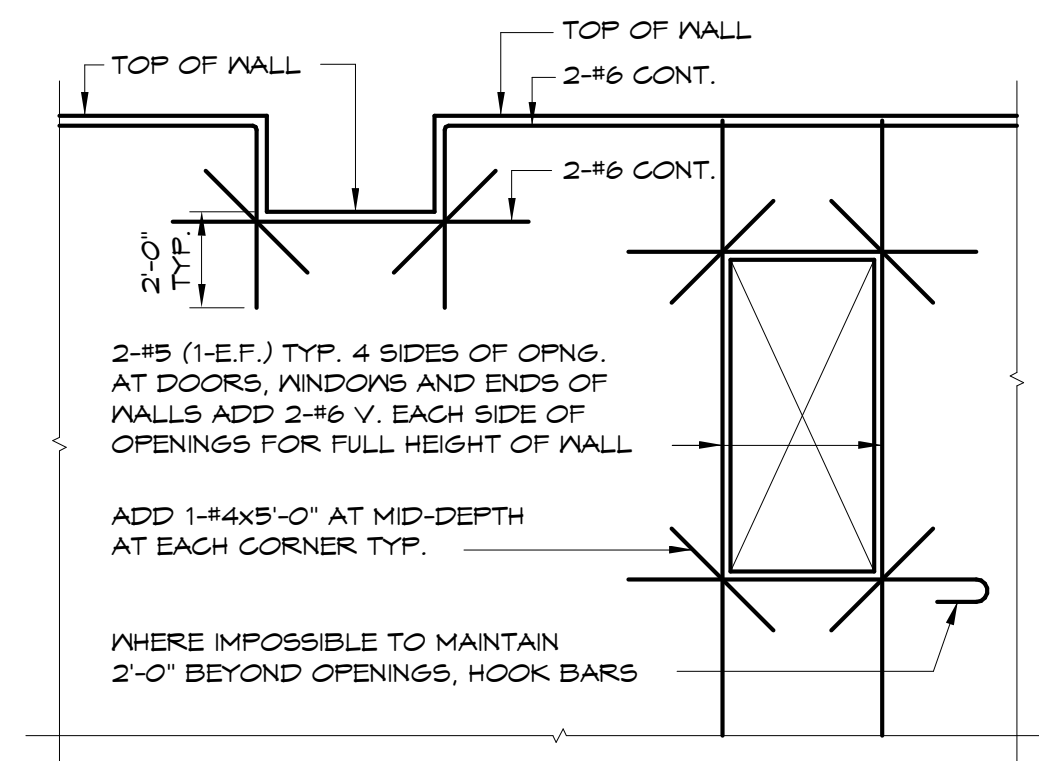
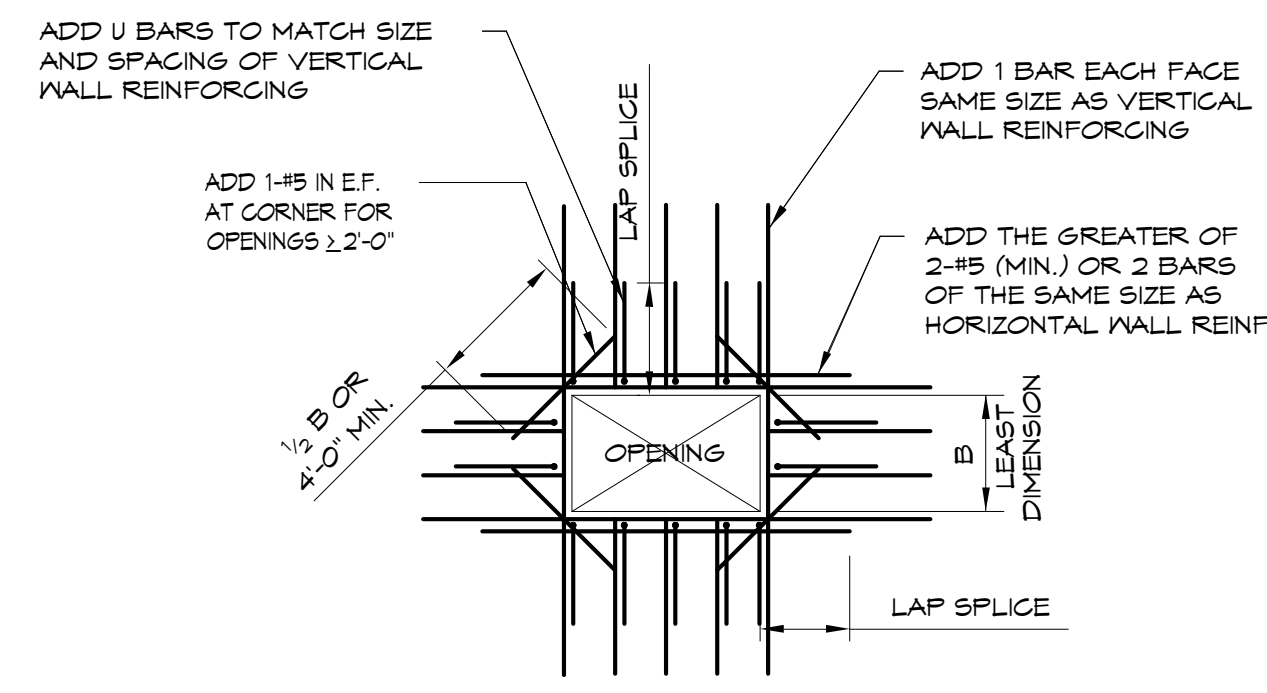


NOTE:
ONE (1) LOCATION MINIMUM REQUIRED PER BUILDING, SEE ELECTRICAL DRAWINGS. COORDINATE WITH GENERAL CONTRACTOR FOR LOCATION OF REBAR CONNECTION AND TO PROVIDE ACCESS TO THE REBAR CONNECTION UNTIL ELECTRICAL INSTALLATION AND INSPECTION ARE COMPLETE.

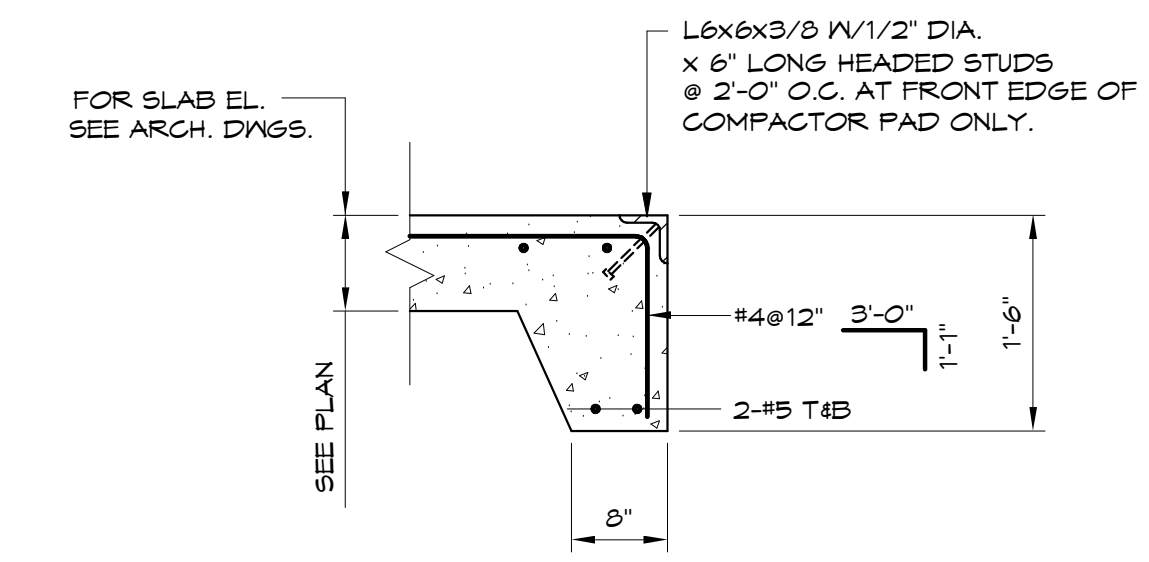
CONCRETE ENCASED ELECTRODE



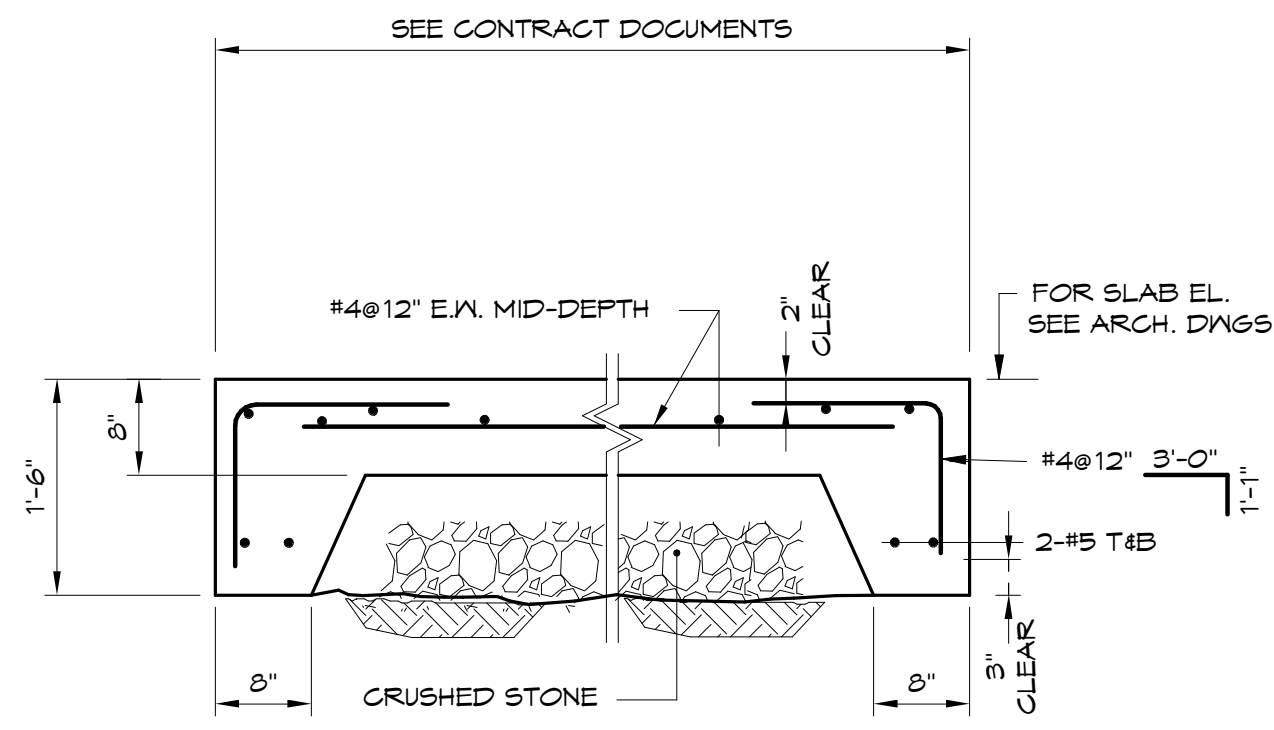
TYP. DETAIL AT OPENINGS AND BREAK IN WALLS



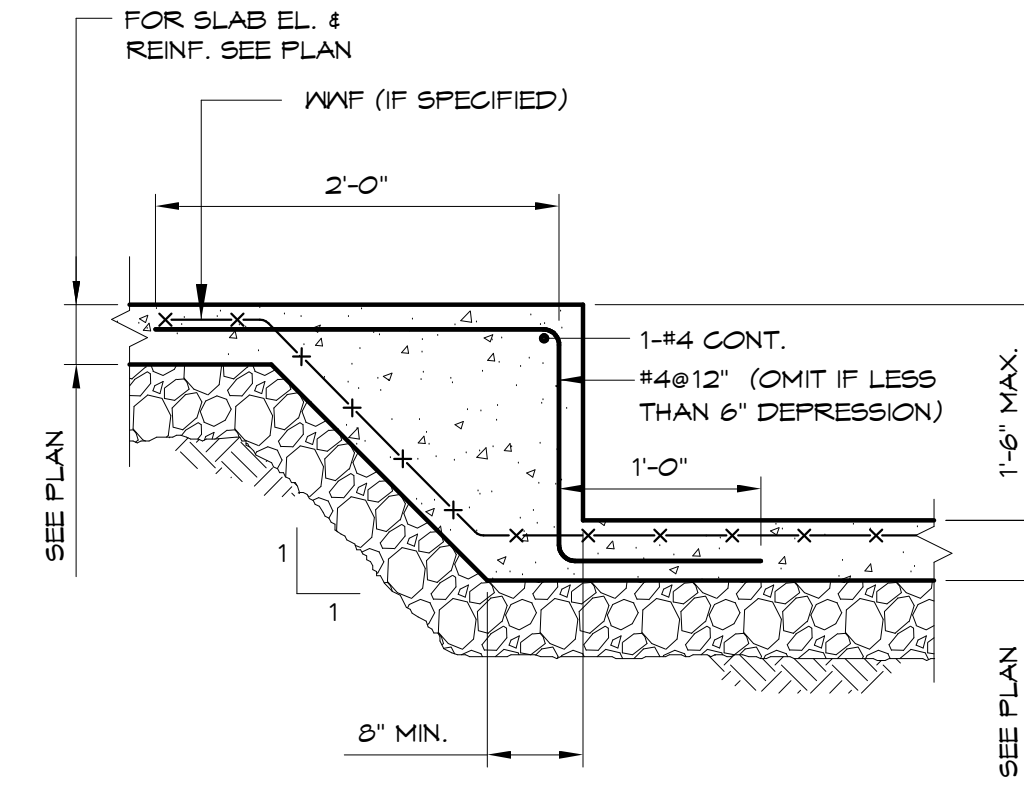
TYPICAL CONCRETE WALL OPENING



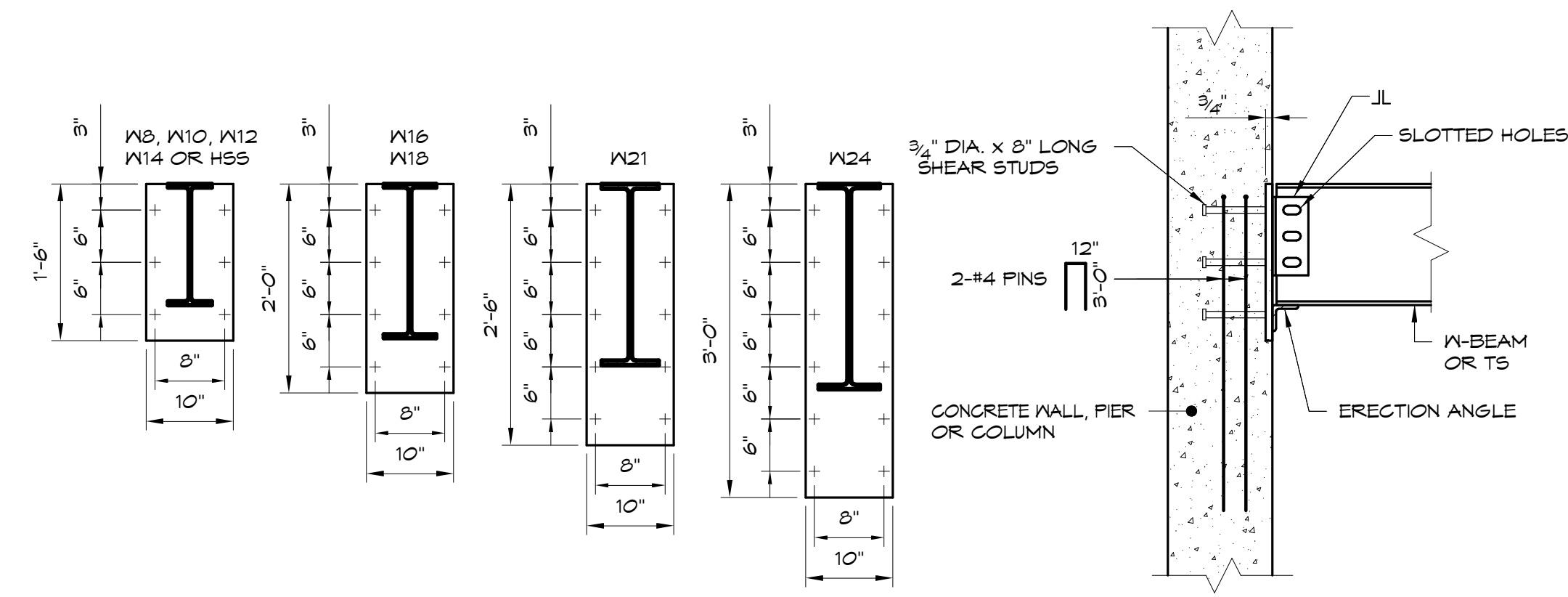
TYPICAL EXTERIOR PAD EDGE DETAIL



TYPICAL EXTERIOR COMPACTOR PAD DETAIL

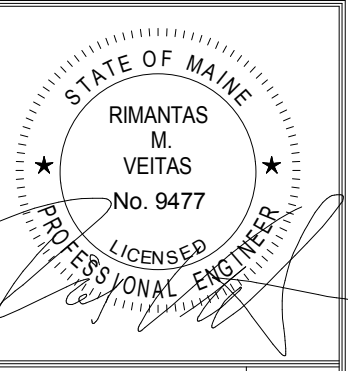


DEPRESSION AT SLAB ON GRADE



NOTE:
1. JL CONNECTION DESIGNED TO TRANSFER SHEAR TO FACE OF EMBEDDED PLATES.

TYPICAL PLATE INSERT FOR STEEL CONNECTIONS DETAIL



Prepared For:
**EssexNorth
Portland LLC**
P.O. Box 394
Topsfield, MA 01983

Consultant:
**VEITAS VEITAS
DUB
engineers**
680 Centre Street, Suite 101
Braintree, Massachusetts 02184
TEL: 781.843.2863 FAX: 781.849.2055

Architect:
**ARCHITYPE
architects**
48 Union Wharf, Portland, Maine 04101
(207) 772-6022 Fax (207) 772-4056

Project:
**THAMES STREET
CONDOMINIUM**
20 Thames Street, Portland Maine

Revisions:

Date: JULY 2017
Scale: As indicated

TYPICAL DETAILS

S2.03