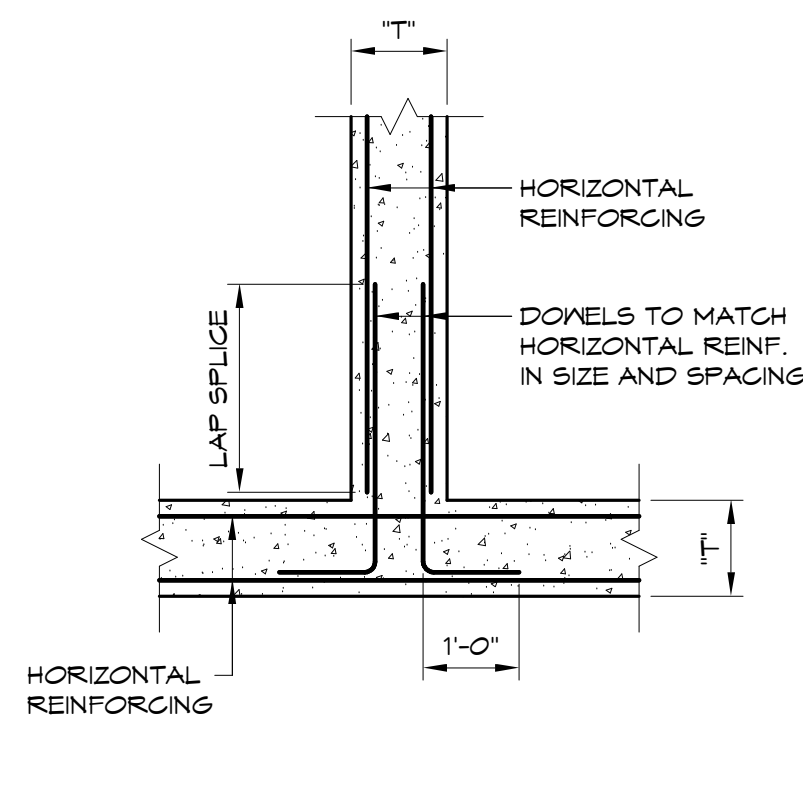
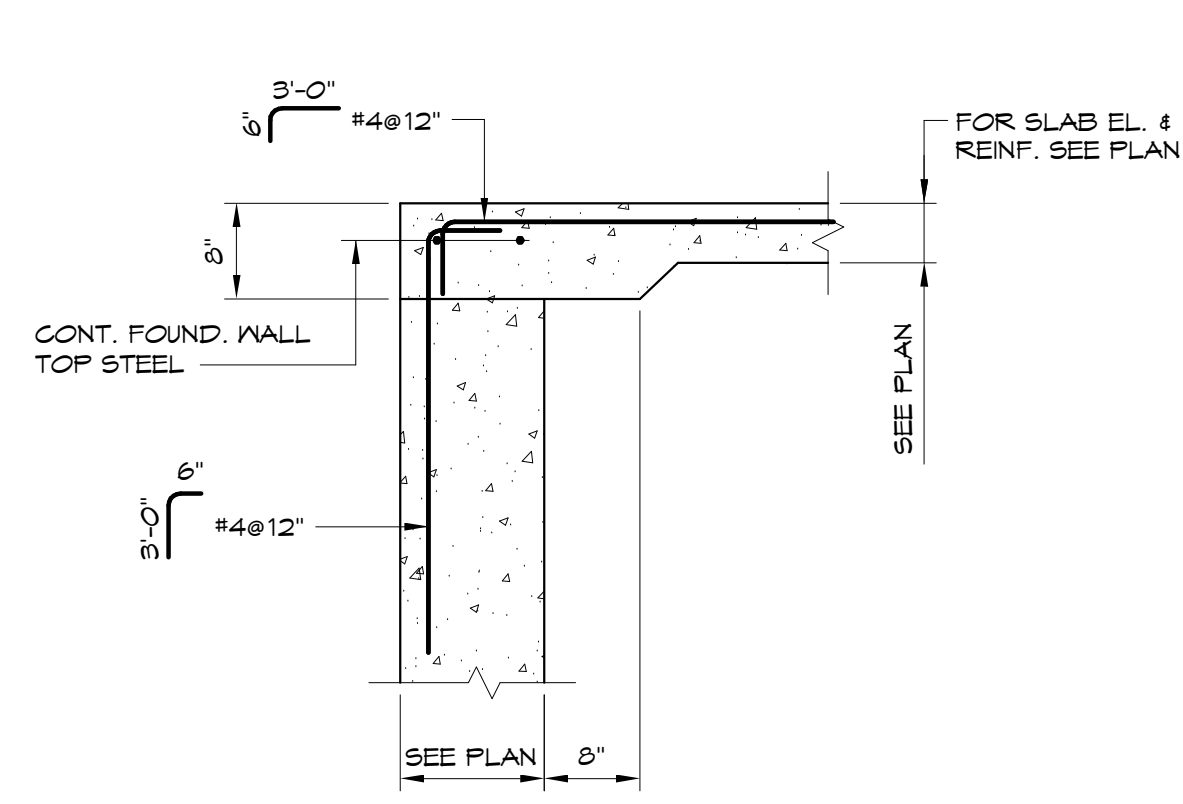


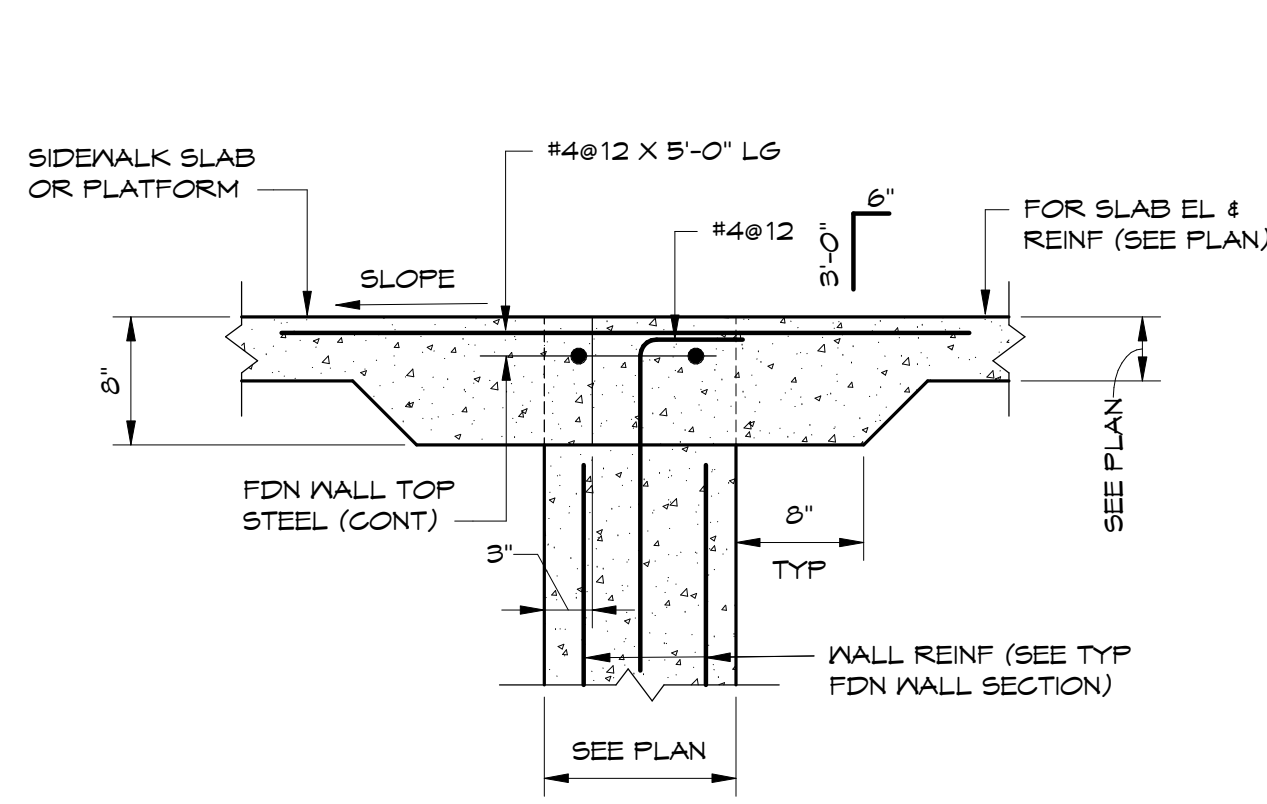
HORIZONTAL REINFORCING OF CONCRETE WALLS



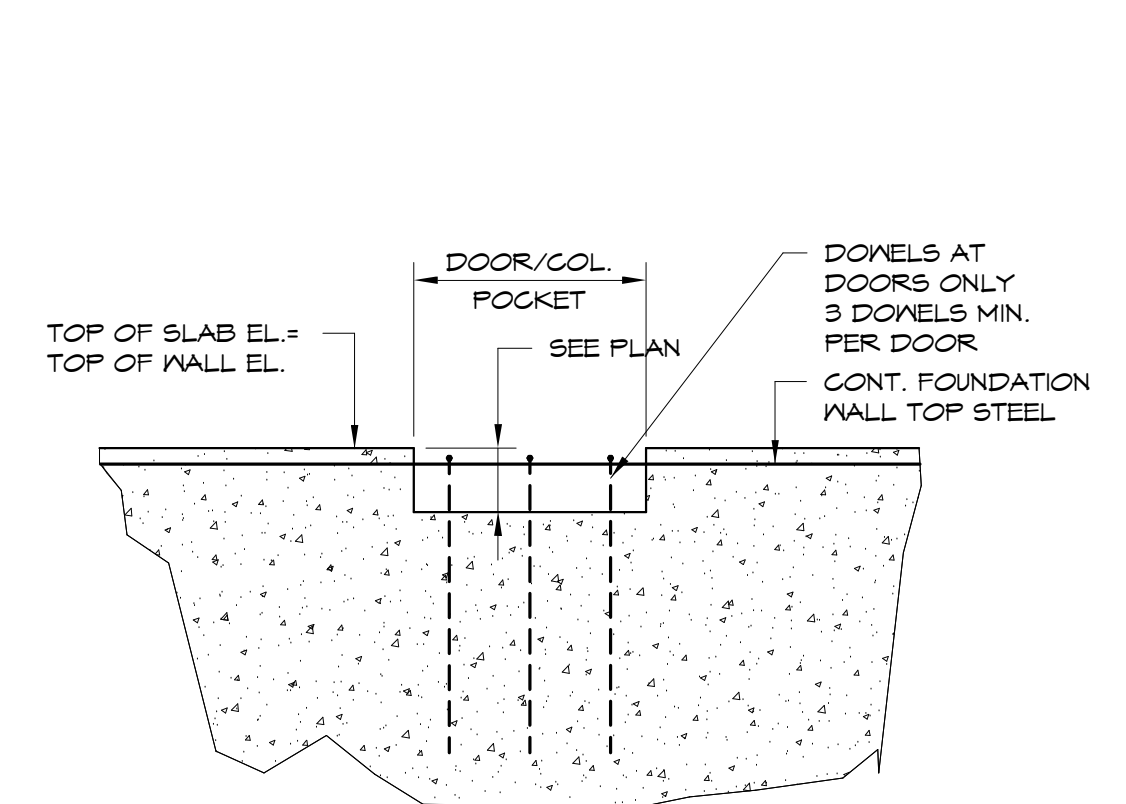
HORIZONTAL REINFORCING OF CONCRETE WALLS



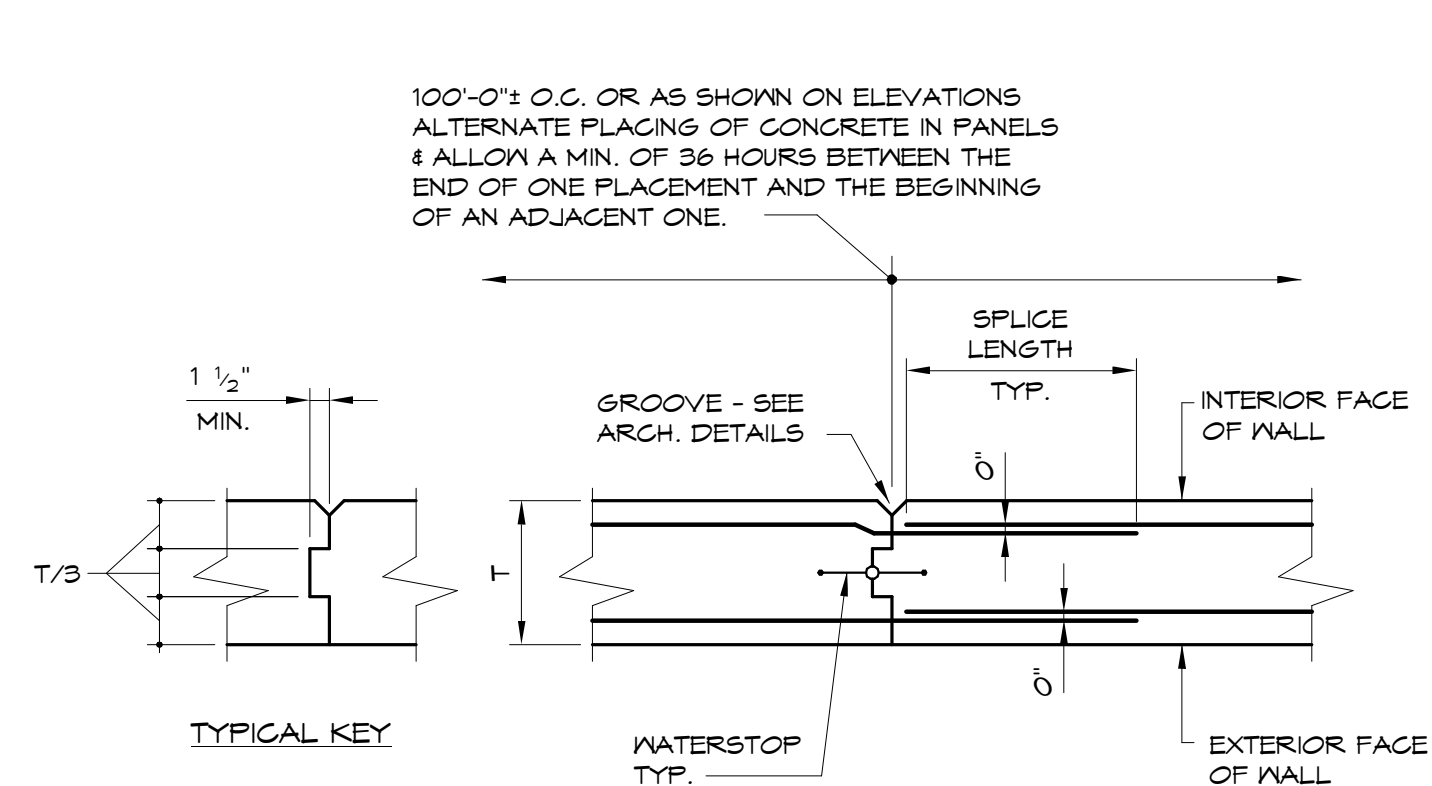
**TYPICAL WALL SECTION AT DOORWAY
TOP ELEVATION = TOP OF SLAB ELEVATION**



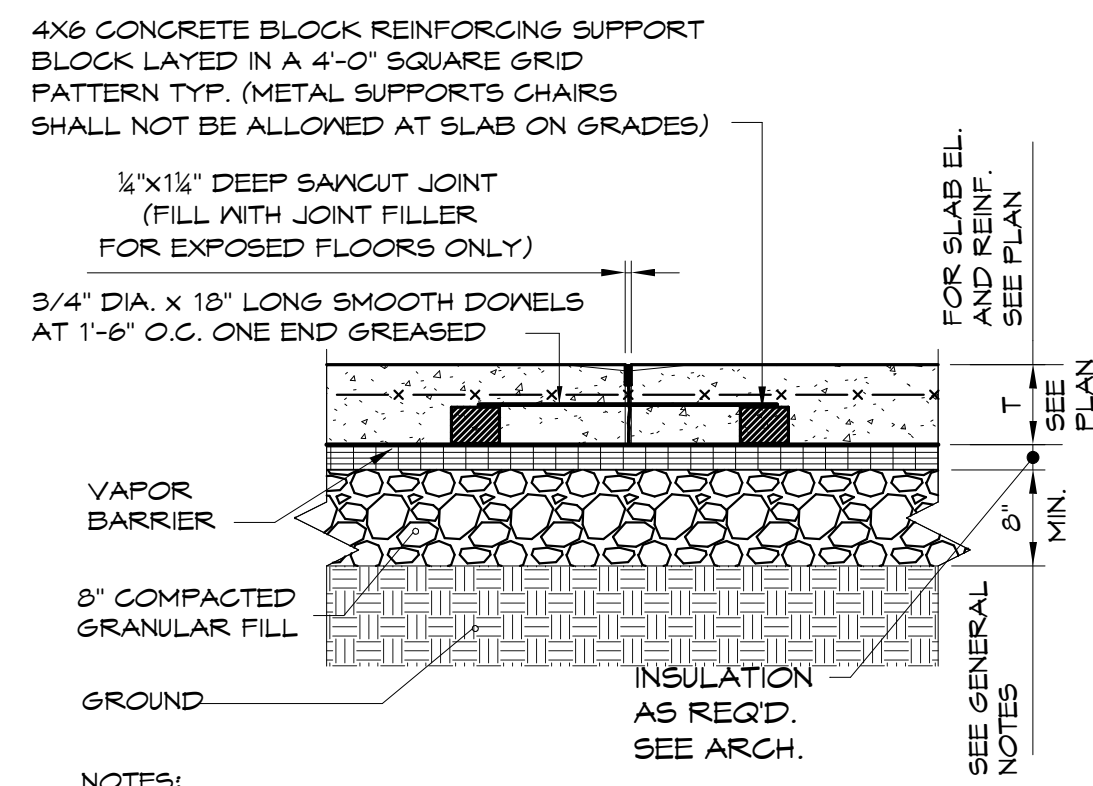
**TYPICAL WALL SECTION AT DOORWAY
W/ SIDEWALK OR PLATFORM**



TYPICAL ELEVATION AT DOORS
NOTE: REFER TO TYPICAL WALL SECTION AT DOORWAY

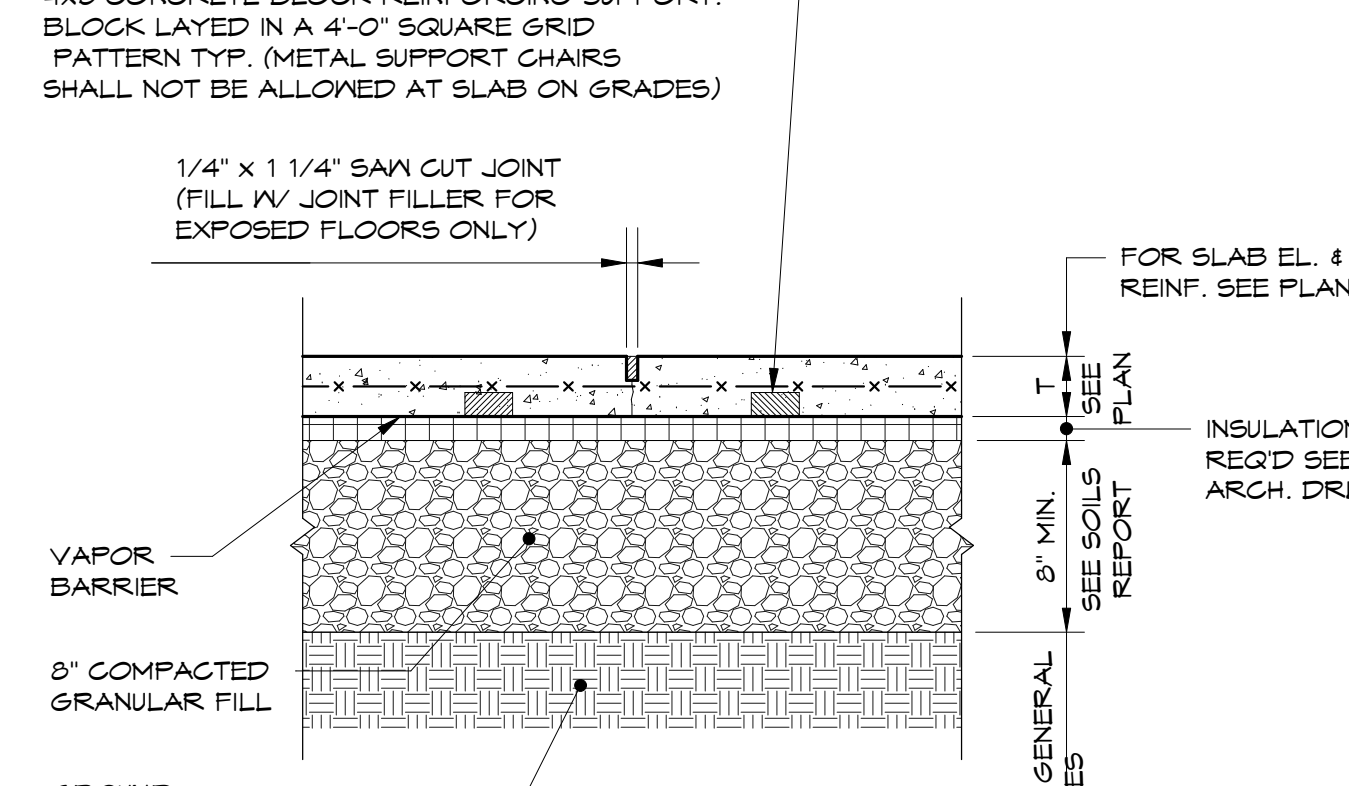


CONSTRUCTION JOINT IN CONCRETE WALL



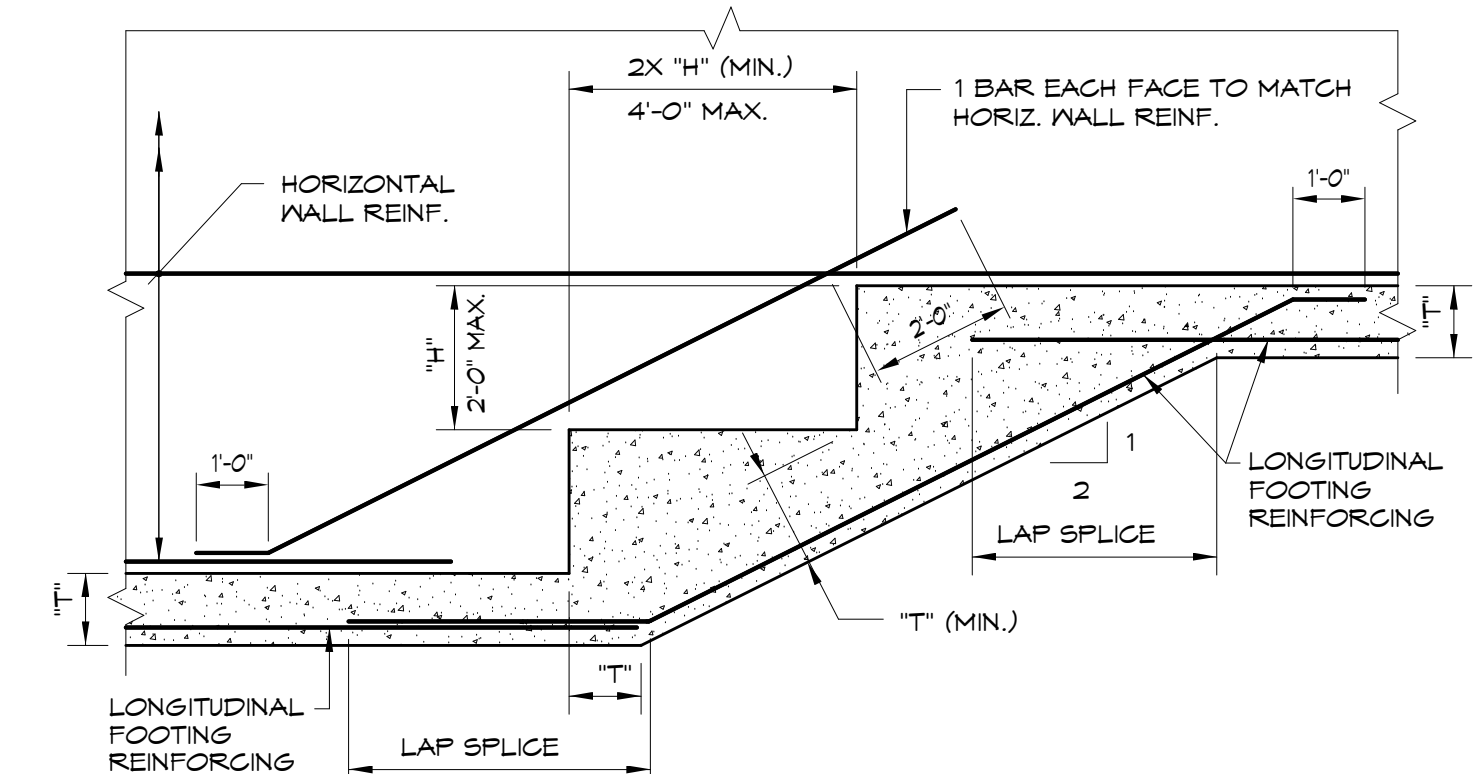
NOTES:
1. VAPOR BARRIER SHALL BE LAPPED 12" MINIMUM AND TAPED. ALL CUTS AND RIPS IN VAPOR BARRIER SHALL BE TAPED.

TYPICAL SLAB ON GRADE CONSTRUCTION JOINT DETAIL

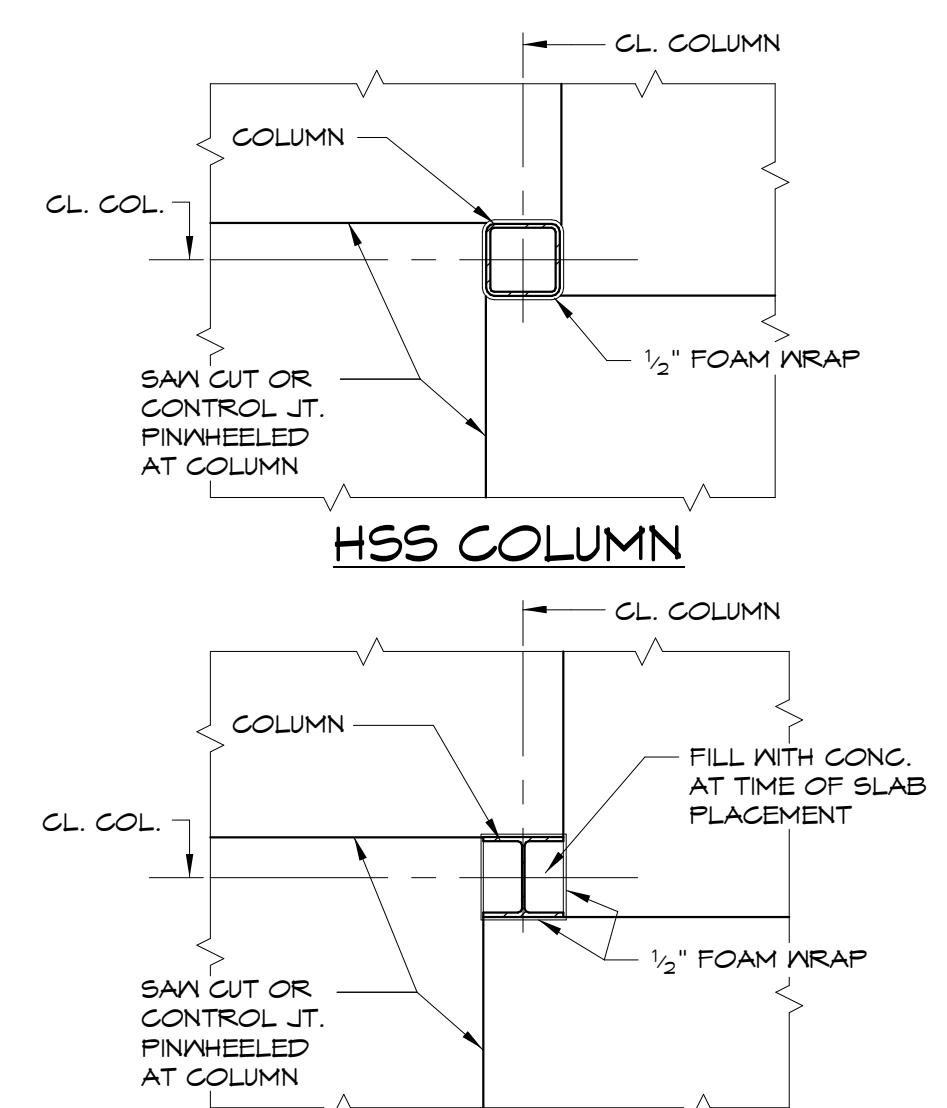


NOTES:
1. VAPOR BARRIER SHALL BE LAPPED 12" MINIMUM AND TAPED. ALL CUTS AND RIPS IN VAPOR BARRIER SHALL BE TAPED.

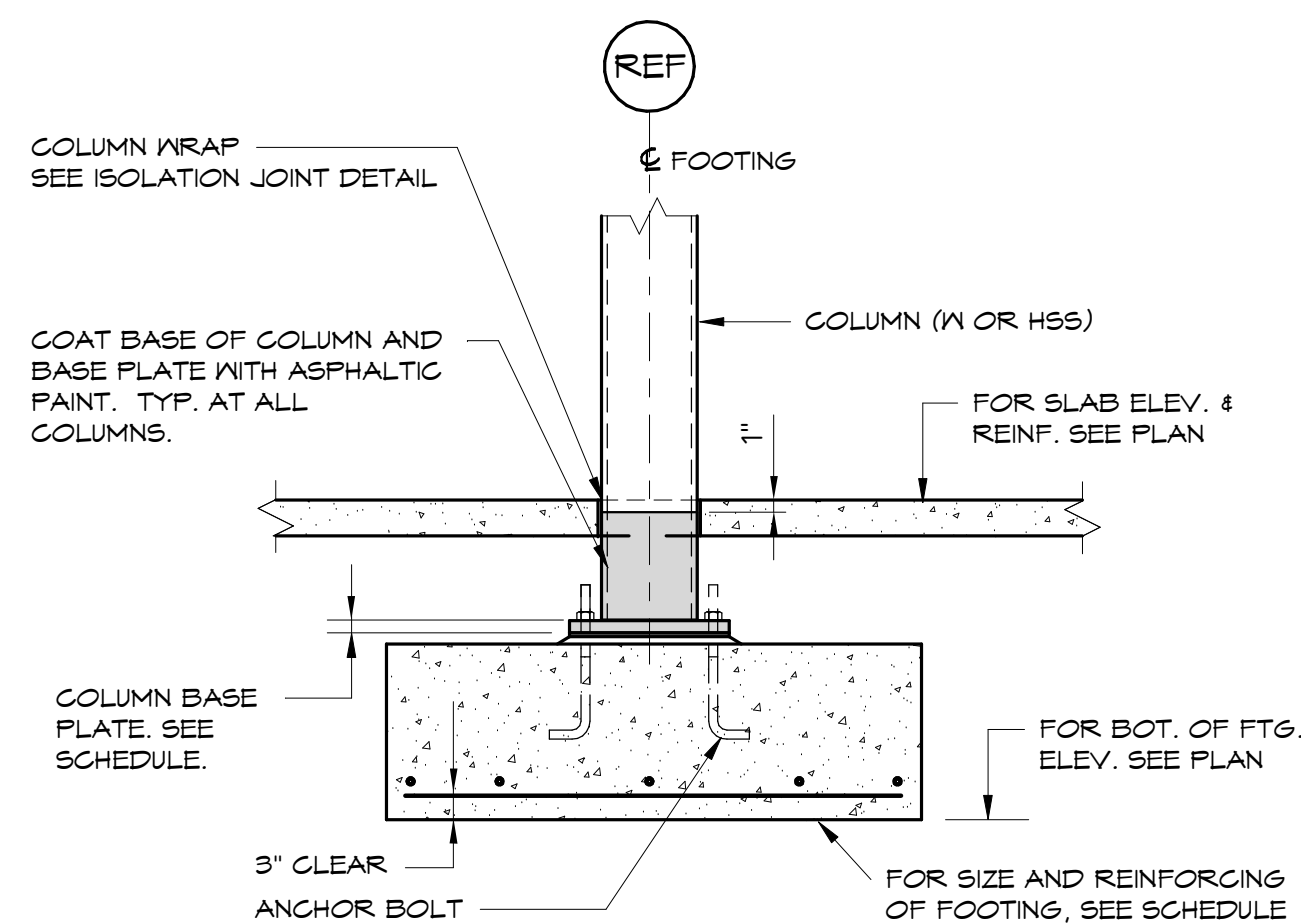
TYPICAL SAW CUT CONTROL JOINT DETAIL



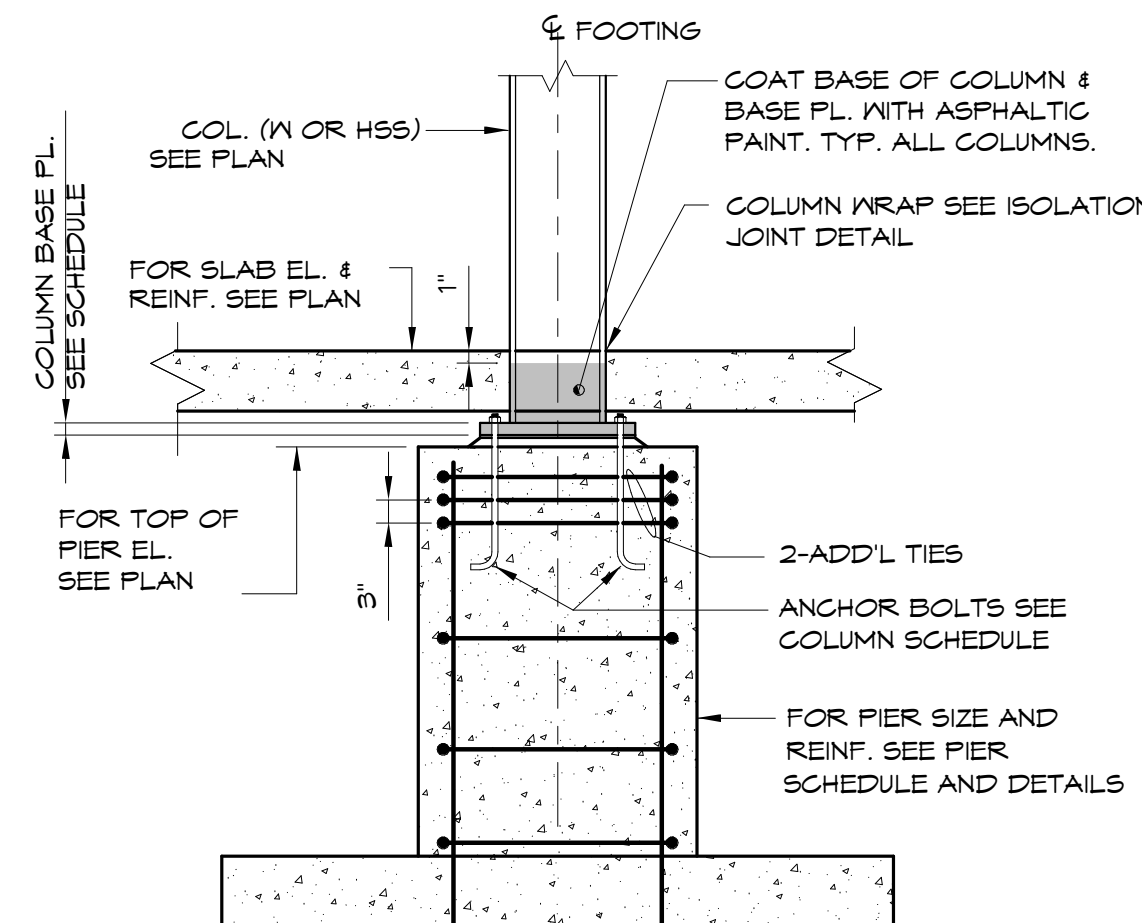
CONTINUOUS STEPPED WALL FOOTING



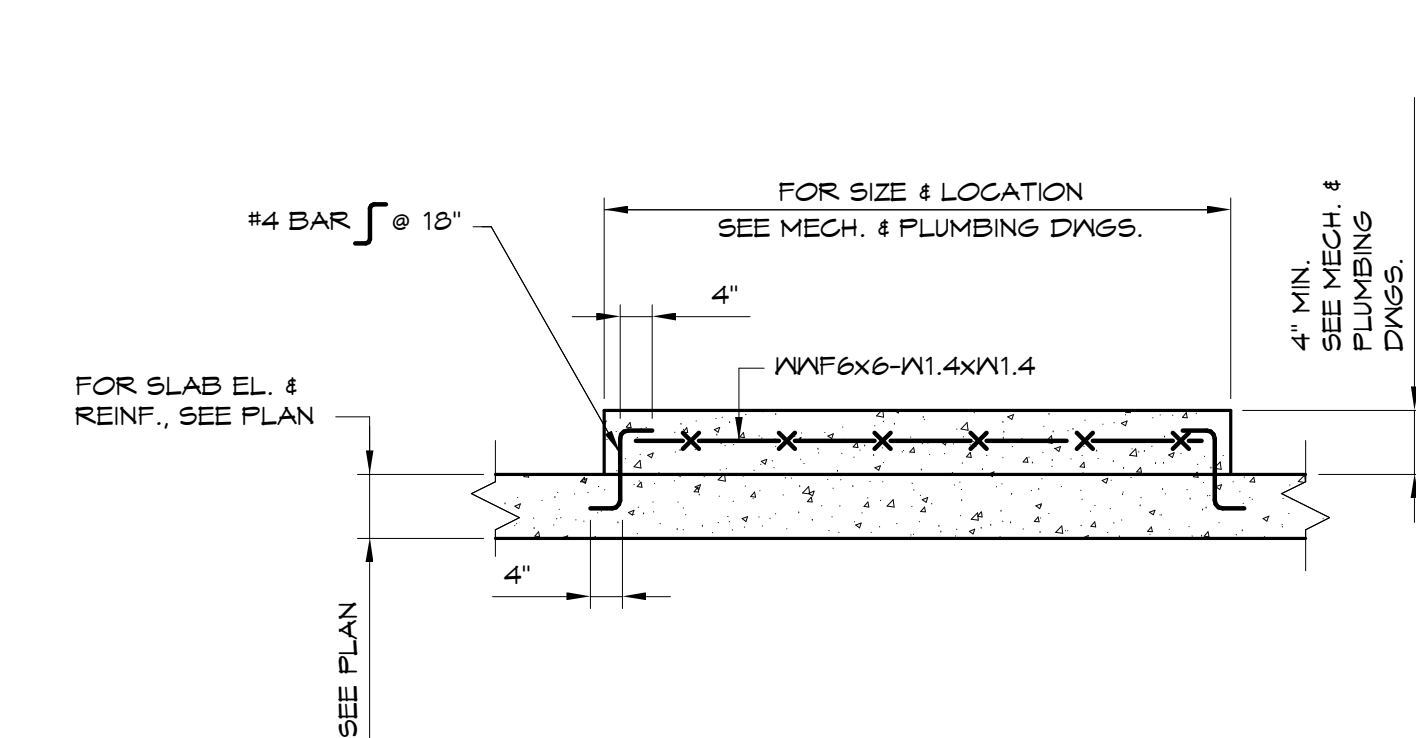
ISOLATION JOINT DETAIL AT COLUMNS



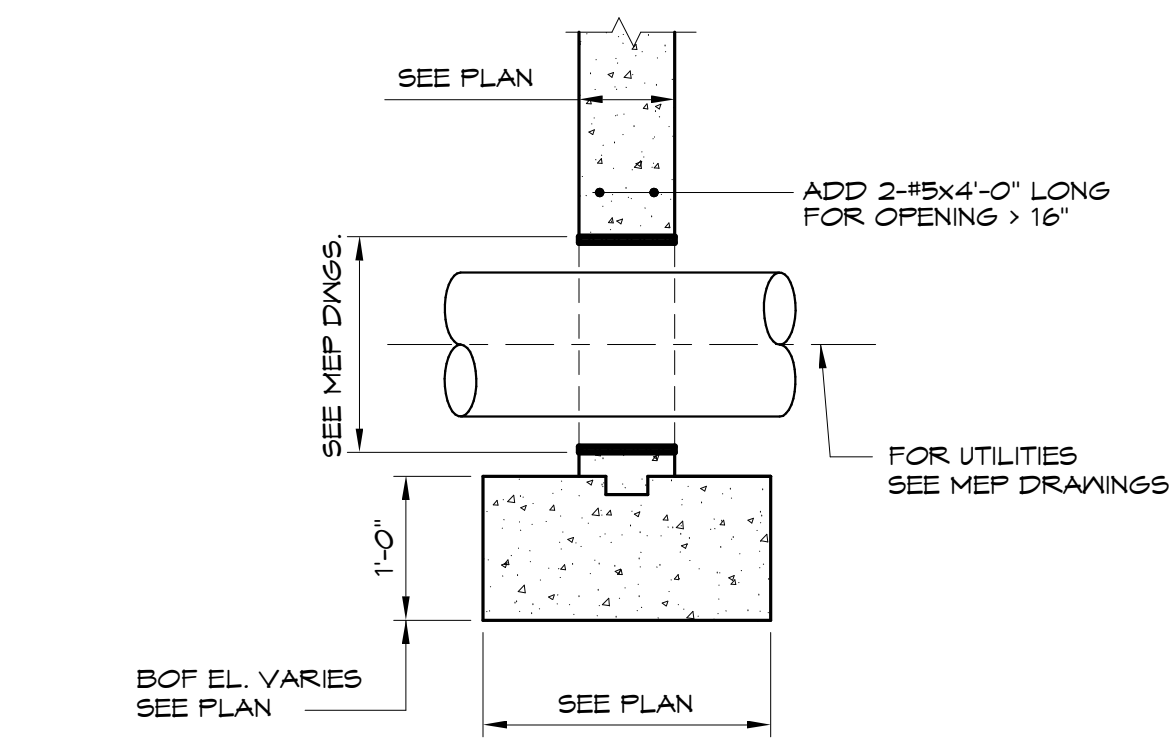
INTERIOR COLUMN FOOTING DETAIL



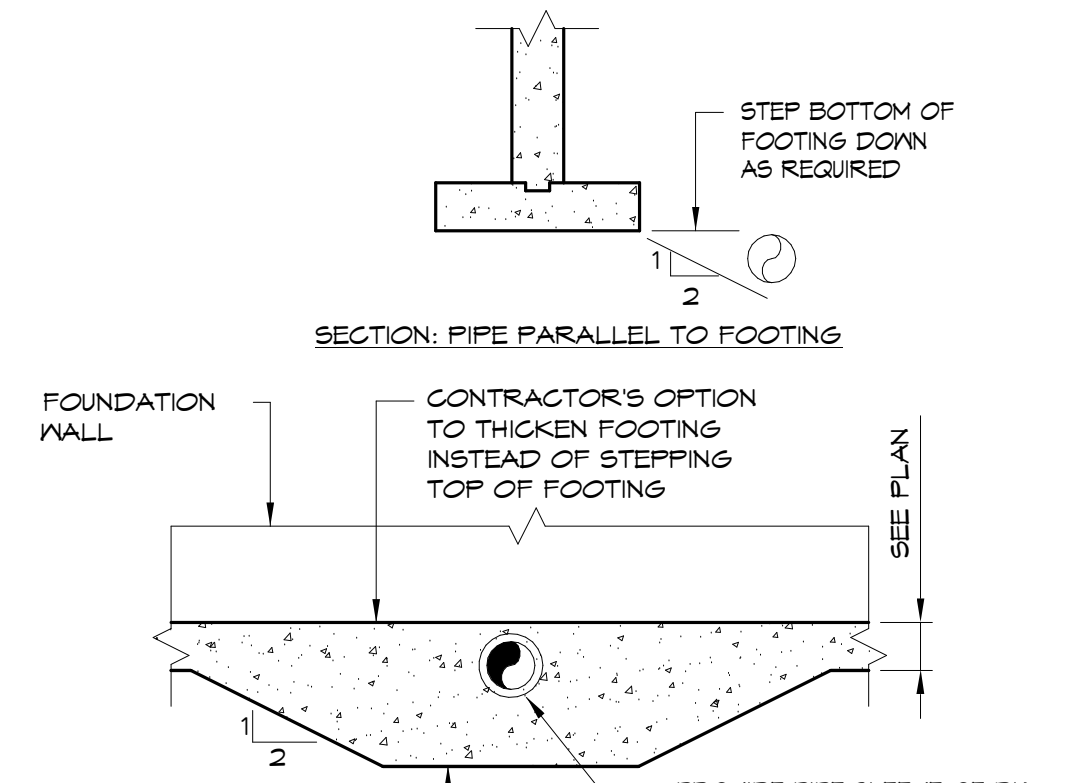
INTERIOR FOOTING WITH COLUMN PIER DETAIL



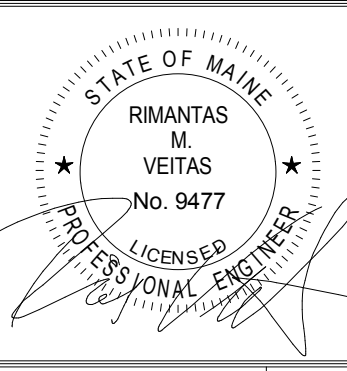
TYPICAL MECHANICAL EQUIPMENT PAD



TYPICAL UTILITY SLEEVE
NOTE: STEP FOOTING DOWN AS REQUIRED TO ACCOMMODATE UTILITY SLEEVE ELEVATION.



TYPICAL FOOTING DETAILS AT PIPE



Prepared For:
**EssexNorth
Portland LLC**
P.O. Box 394
Topsfield, MA 01983

Consultant:
**VEITAS VEITAS
engineers**
680 Centre Street, Suite 101
Branford, Massachusetts 02824
TEL: 781-843-2863 FAX: 781-849-2055

Architect:
**ARCHITYPE
architects**
48 Union Wharf Portland, Maine 04101
(207) 772-6022 Fax (207) 772-4056

Project:
**THAMES STREET
CONDOMINIUM**
20 Thames Street, Portland Maine

Revisions:
Date: **JULY 2017**
Scale: **As indicated**

TYPICAL DETAILS
S2.02