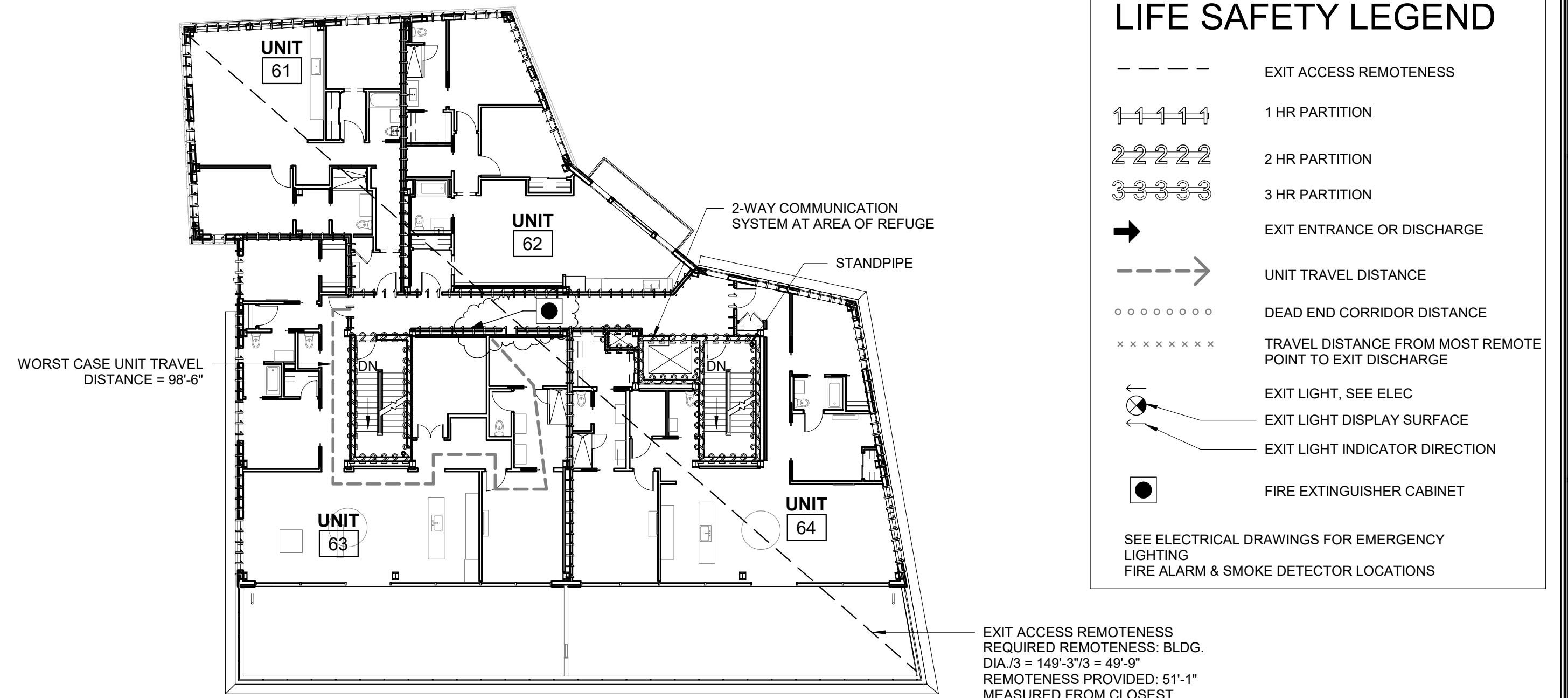
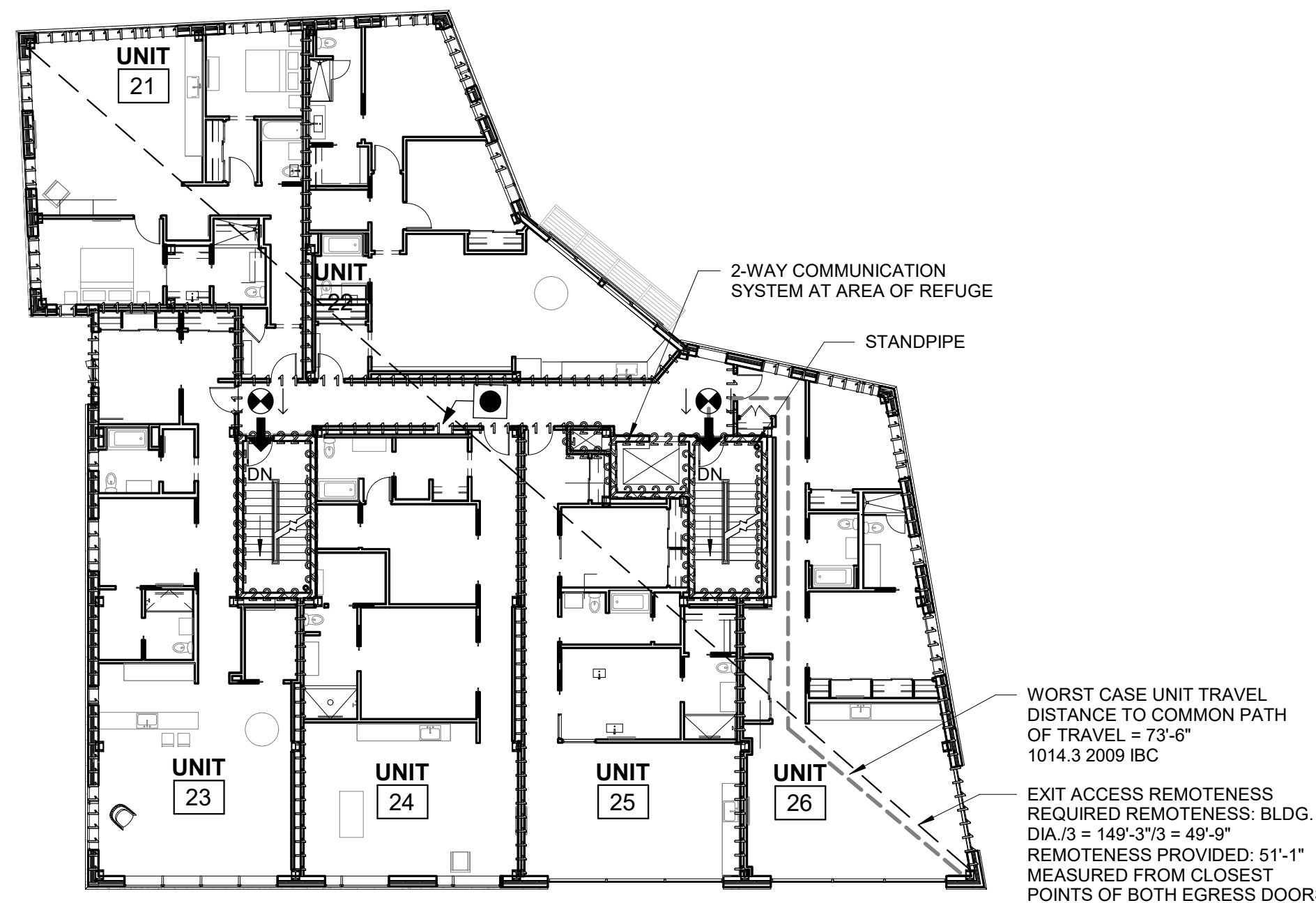


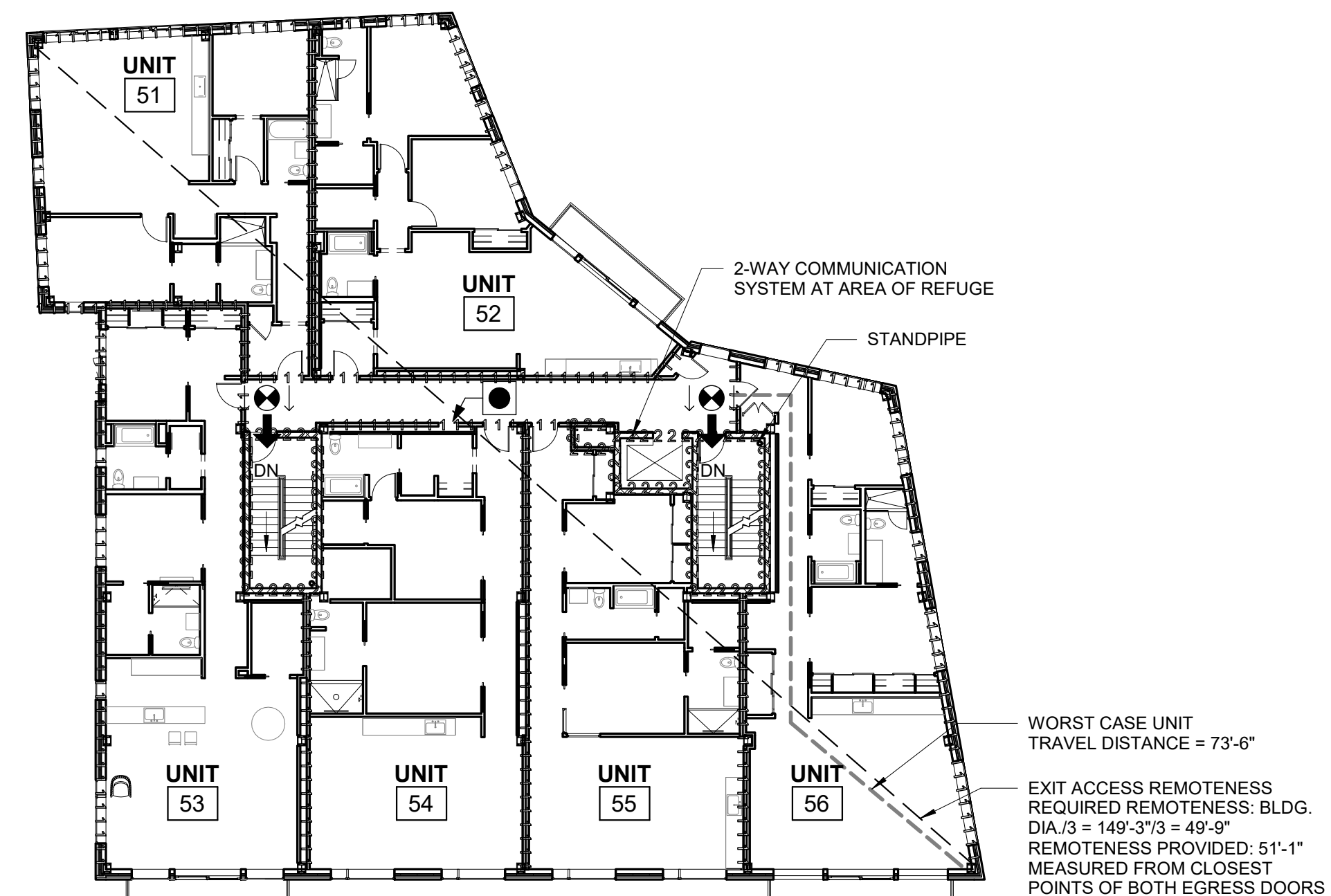
3 | 3RD FLOOR (LIFE SAFETY)
1/16" = 1'-0"



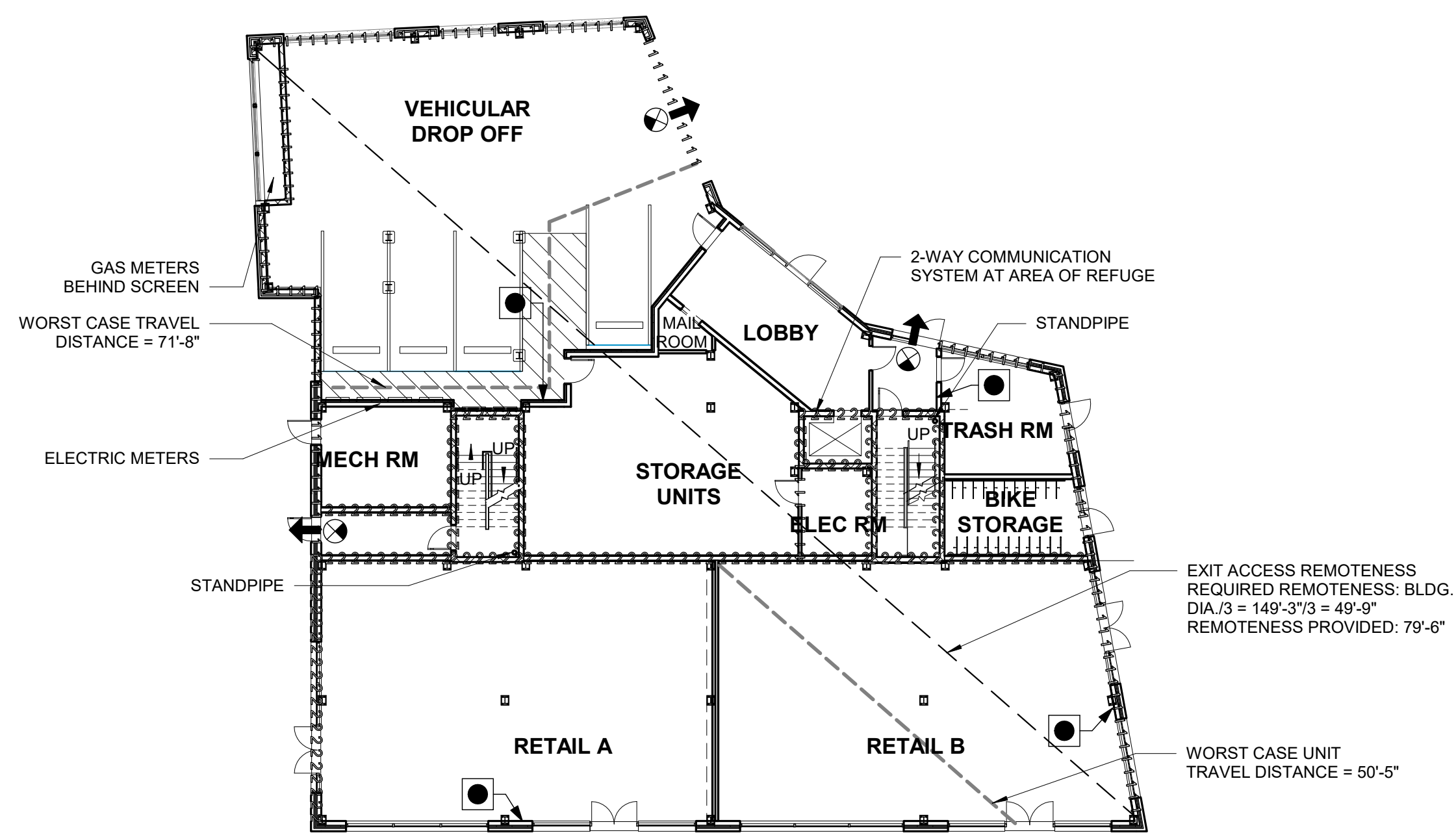
6 | 6TH FLOOR (LIFE SAFETY)
1/16" = 1'-0"



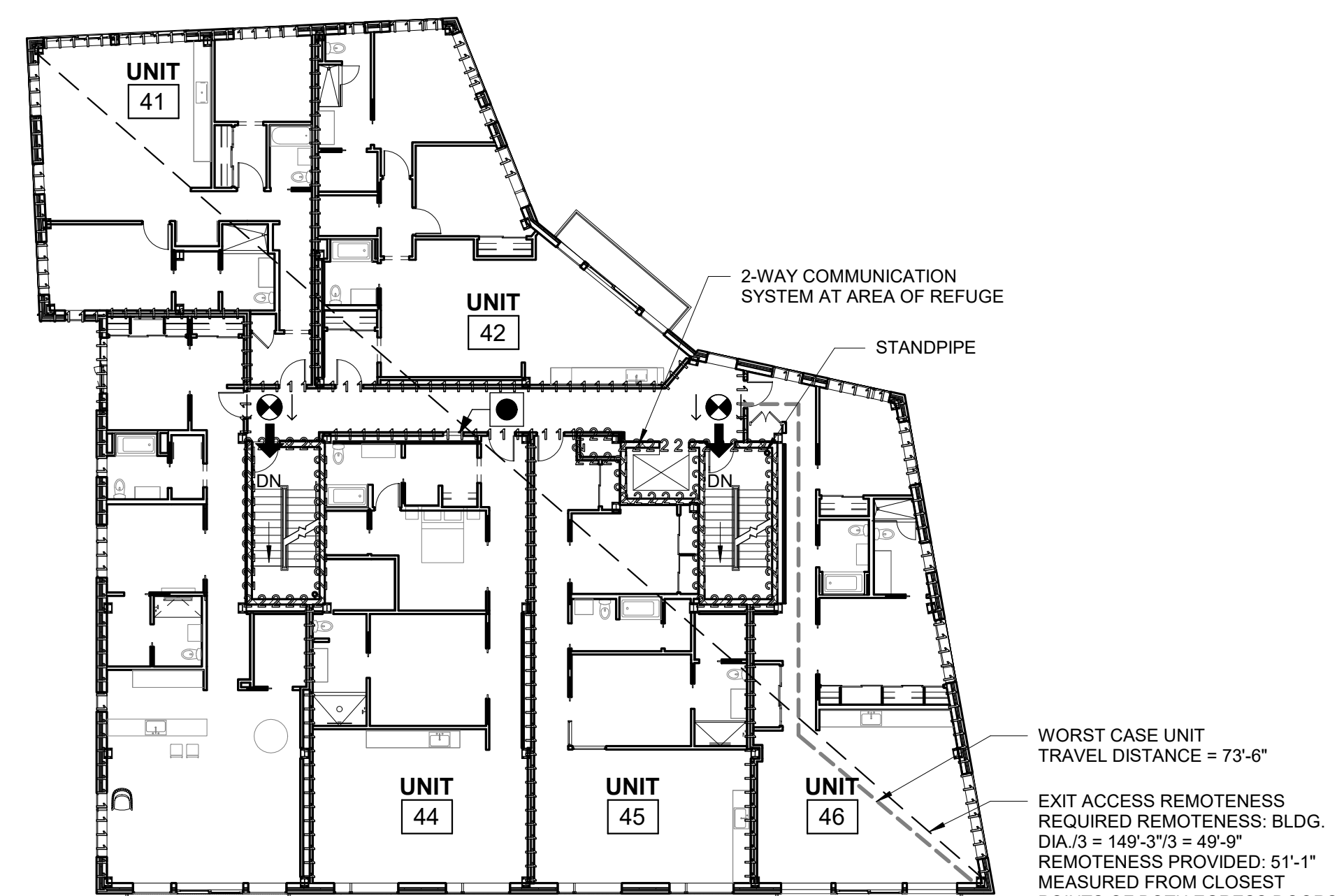
2 | 2ND FLOOR (LIFE SAFETY)
1/16" = 1'-0"



5 | 5TH FLOOR (LIFE SAFETY)
1/16" = 1'-0"



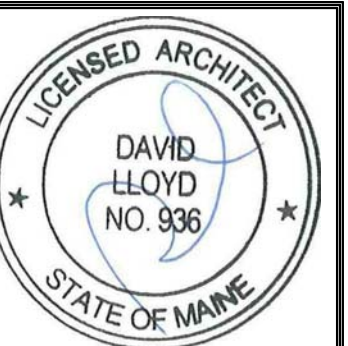
1 | 1ST FLOOR - LIFE SAFETY
1/16" = 1'-0"



4 | 4TH FLOOR (LIFE SAFETY)
1/16" = 1'-0"

LIFE SAFETY LEGEND

- EXIT ACCESS REMOTENESS
 - 1-1-1-1-1 1 HR PARTITION
 - 2-2-2-2-2 2 HR PARTITION
 - 3-3-3-3-3 3 HR PARTITION
 - ➔ EXIT ENTRANCE OR DISCHARGE
 - ➔ UNIT TRAVEL DISTANCE
 - ○ ○ ○ ○ ○ ○ ○ DEAD END CORRIDOR DISTANCE
 - x x x x x x x x TRAVEL DISTANCE FROM MOST REMOTE POINT TO EXIT DISCHARGE
 - ⦿ EXIT LIGHT, SEE ELEC
 - ⦿ EXIT LIGHT DISPLAY SURFACE
 - ⦿ EXIT LIGHT INDICATOR DIRECTION
 - FIRE EXTINGUISHER CABINET
- SEE ELECTRICAL DRAWINGS FOR EMERGENCY LIGHTING FIRE ALARM & SMOKE DETECTOR LOCATIONS



EssexNorth
Portland LLC

P.O. Box 394
Topsfield, MA 01983

Prepared For:

Consultant:

ARCHETYPE
architects
48 Union Wharf Portland, Maine 04101
(207) 772-6022 Fax (207) 772-4056

Architect:

THAMES STREET
CONDOMINIUM
20 Thames Street, Portland, Maine

Project:

Revisions:
1 06/22/17 FOUNDATION PERMIT
4 08/15/17 ADDENDUM 2

Date:

15 AUG 2017

Scale:

As indicated

Date:

15 AUG 2017

Date:

15 AUG 2017

LIFE SAFETY

LS1.01