

Owner

Prepared

Consulting Engineer: VEITAS VEITAS engineers
680 Granite Street, Suite 101
Portland, Maine 04106
Tel: (707) 402-2400 Fax: (707) 402-2405

Architect: ARCHETYPE architects
48 Union Wharf Portland, Maine
(207) 772-6022 ARCHETYPE@ARCHETYPEPA.COM

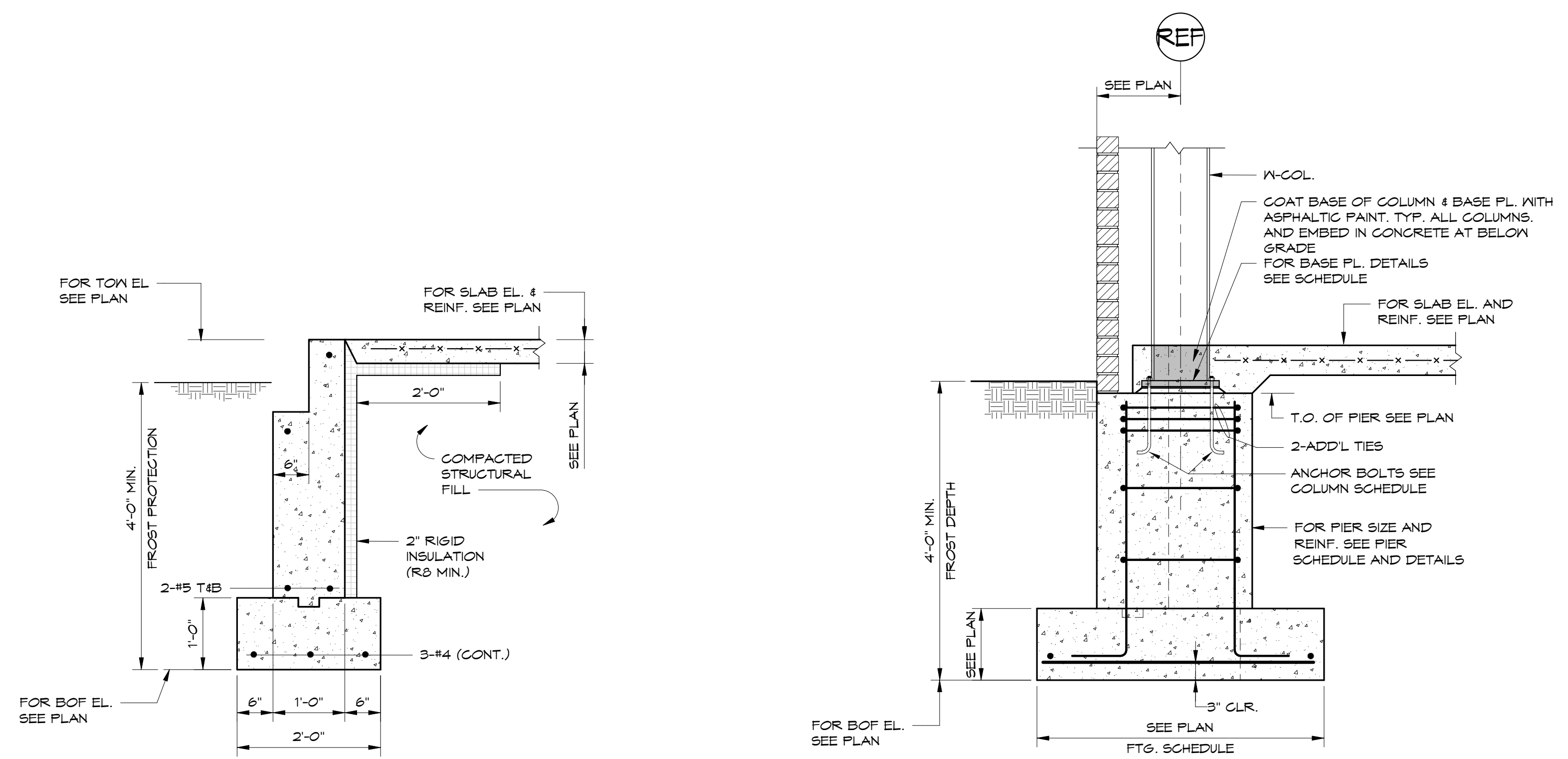
Project: THAMES STREET BUILDING
20 Thames Street, Portland Maine

Revisions: FOUNDATION PERMIT 06/22/2017

Scale: As indicated

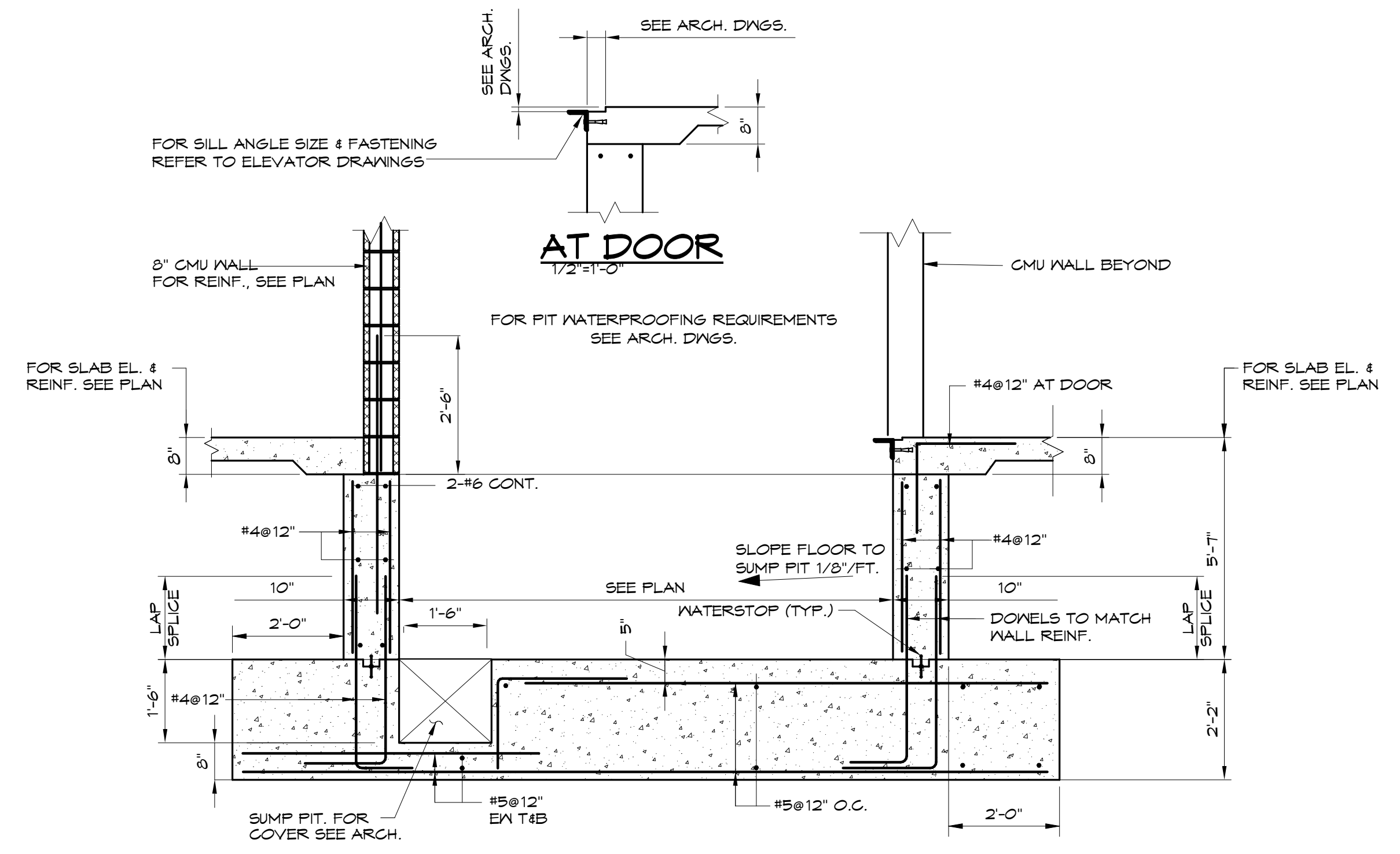
Date: 04/19/2017 SECTIONS

S4.01



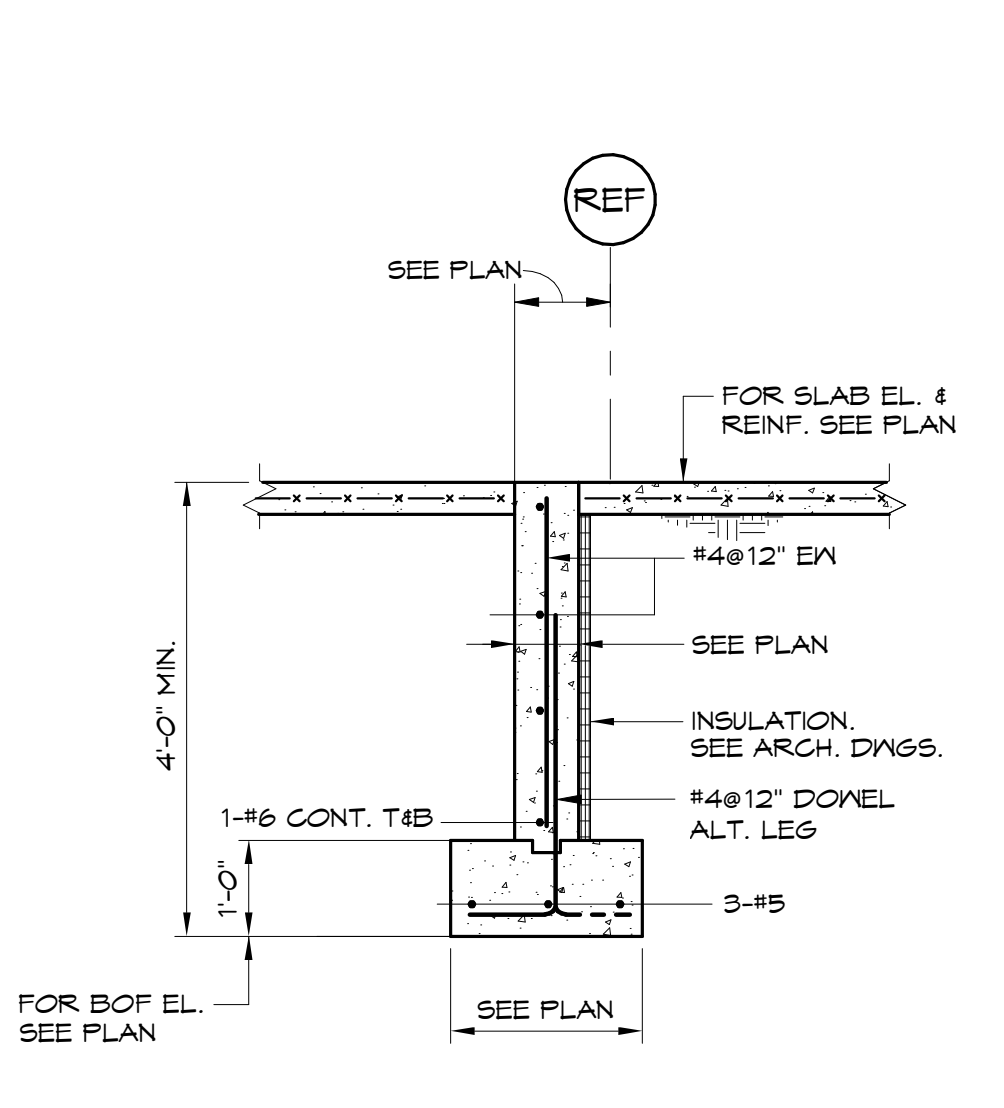
SECTION 1
3/4" = 1'-0"

SECTION 2
3/4" = 1'-0"

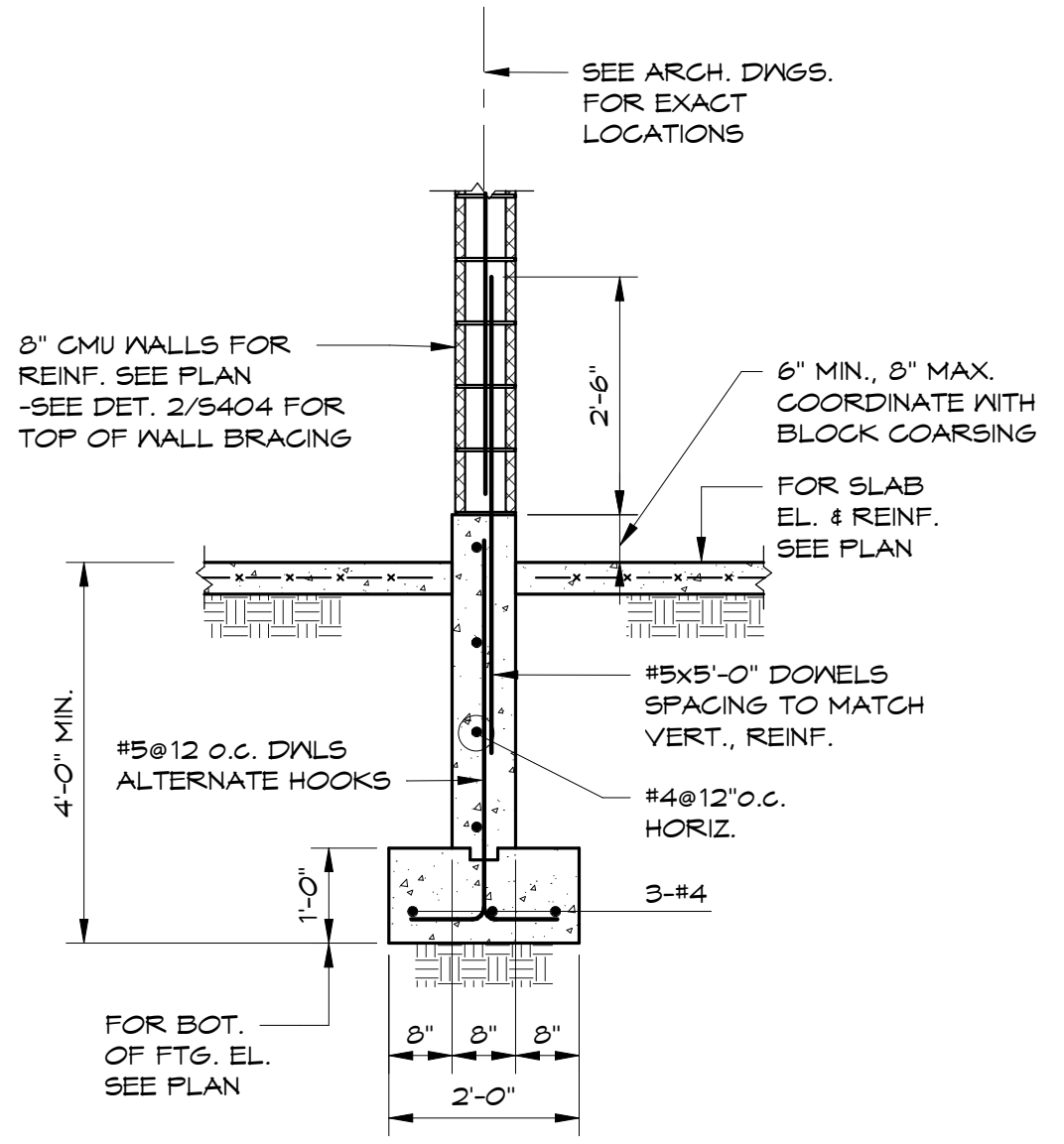


SECTION AT ELEVATOR AT NORTHEAST BUILDING

SECTION 3
1/2" = 1'-0"

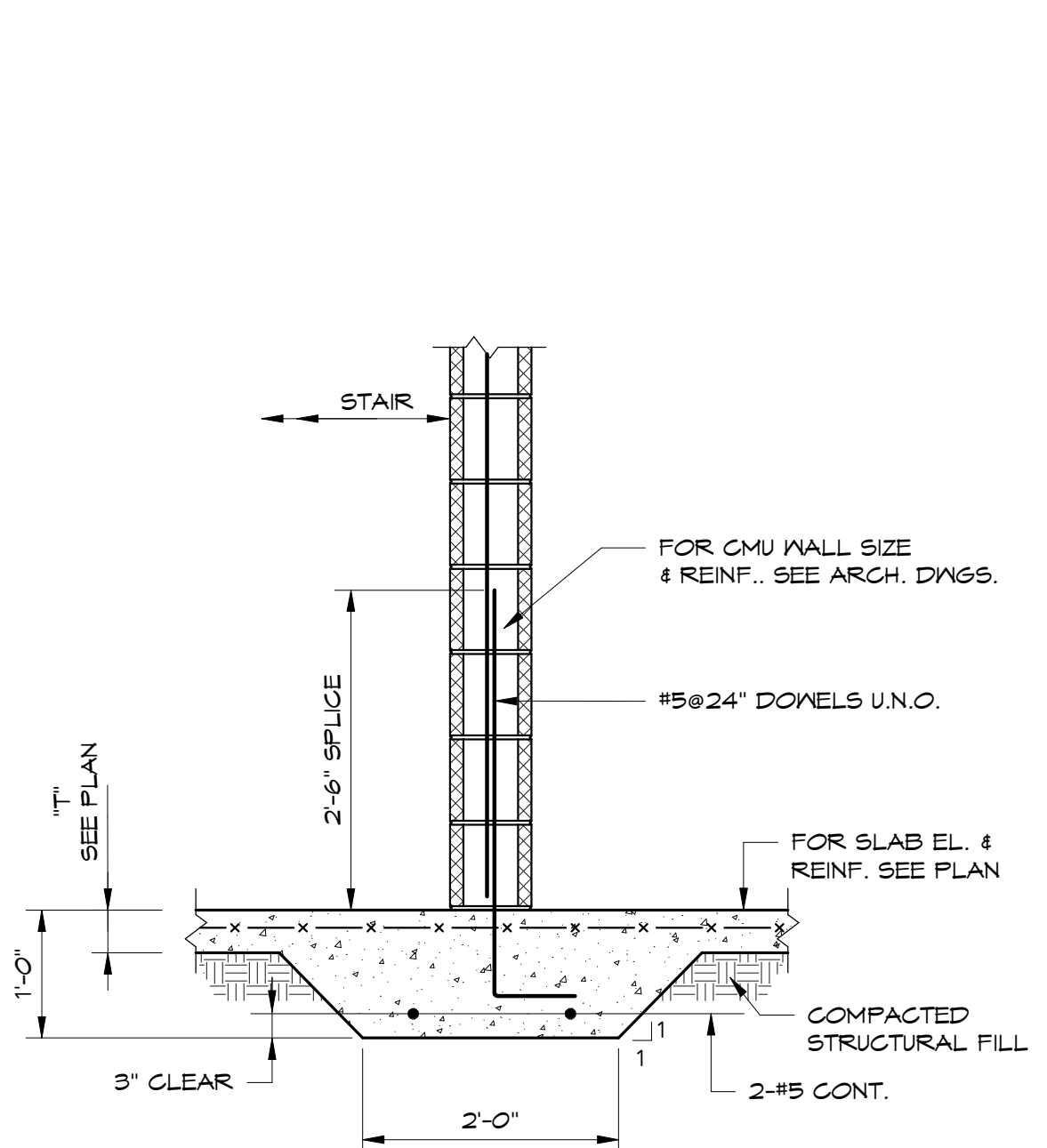


SECTION 4
1/2" = 1'-0"

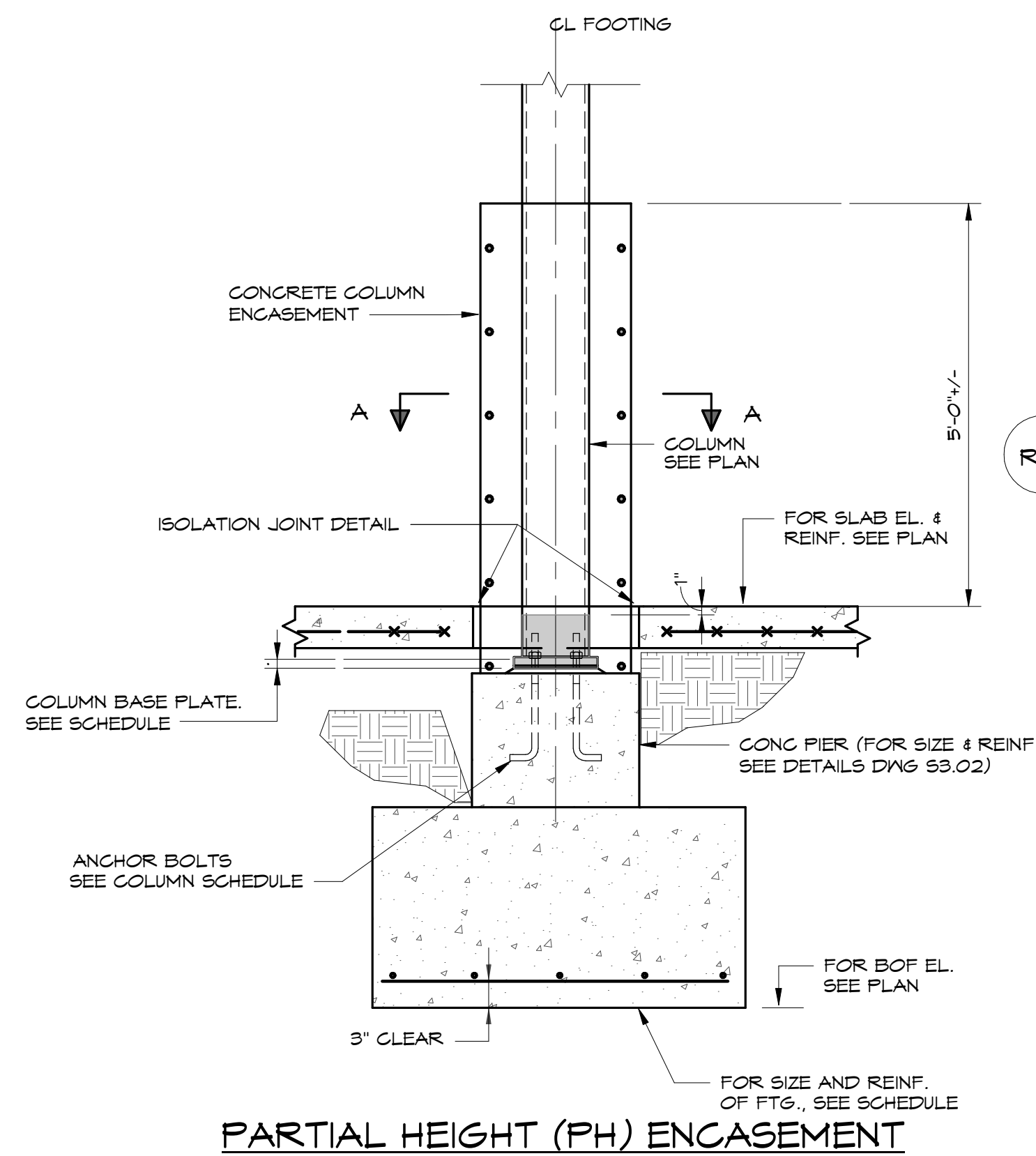


TYPICAL - BASE CONCRETE WALL & FOOTING AT NON-LOAD BEARING CMU WALLS

SECTION 5
3/4" = 1'-0"

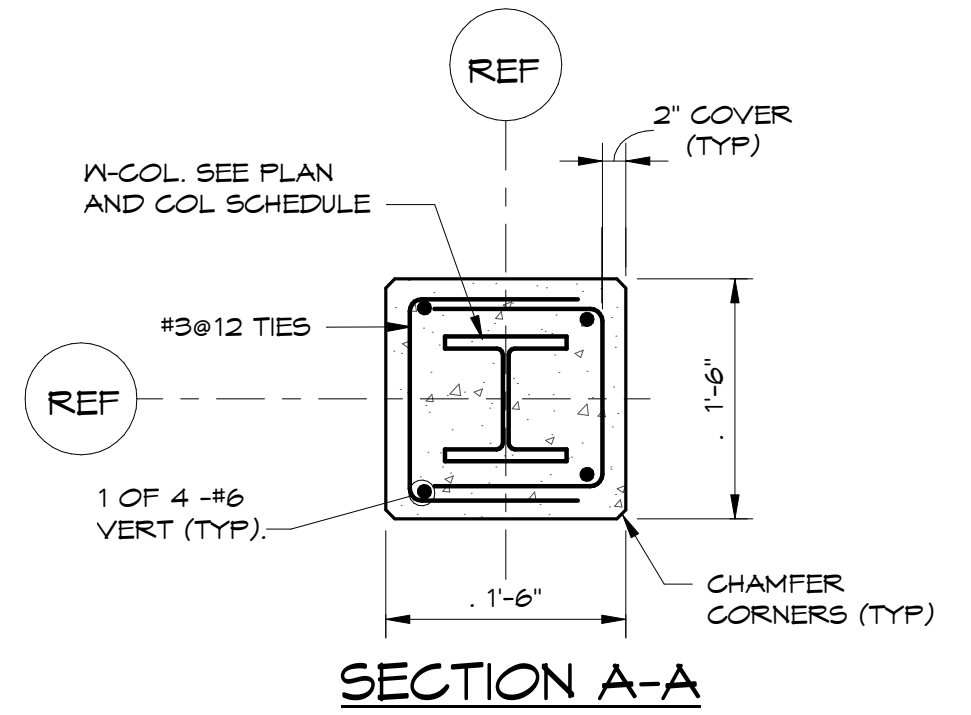


SECTION 6
3/4" = 1'-0"



TYPICAL INTERIOR COLUMN FOOTING AND CONCRETE ENCASEMENT DETAIL

SECTION 7
3/4" = 1'-0"



SECTION A-A
NOTES:
1. FOR COLUMN LOCATION, SEE PLANS AND FOR SIZE SEE COLUMN SCHEDULE ON DWG 9-3.1.
2. USE 5000psi AIR-ENTRAINED CONCRETE.