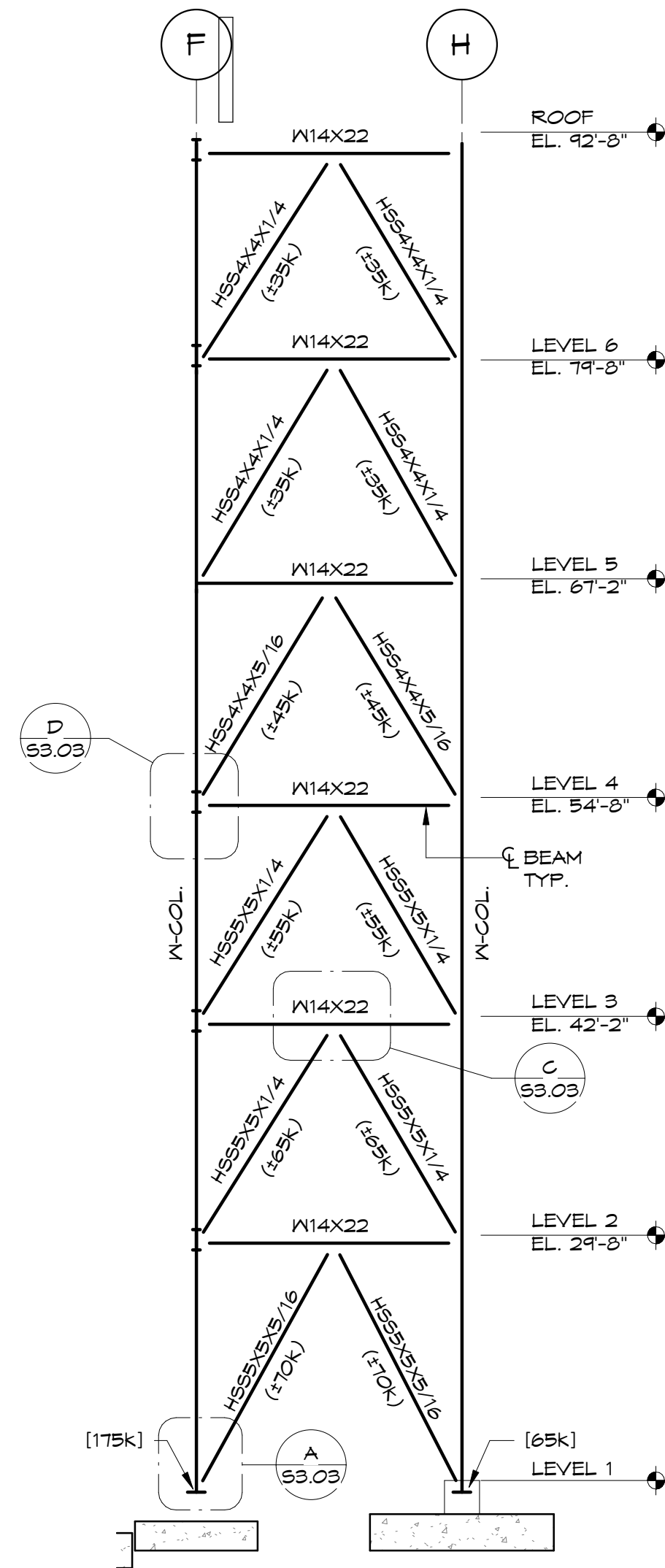
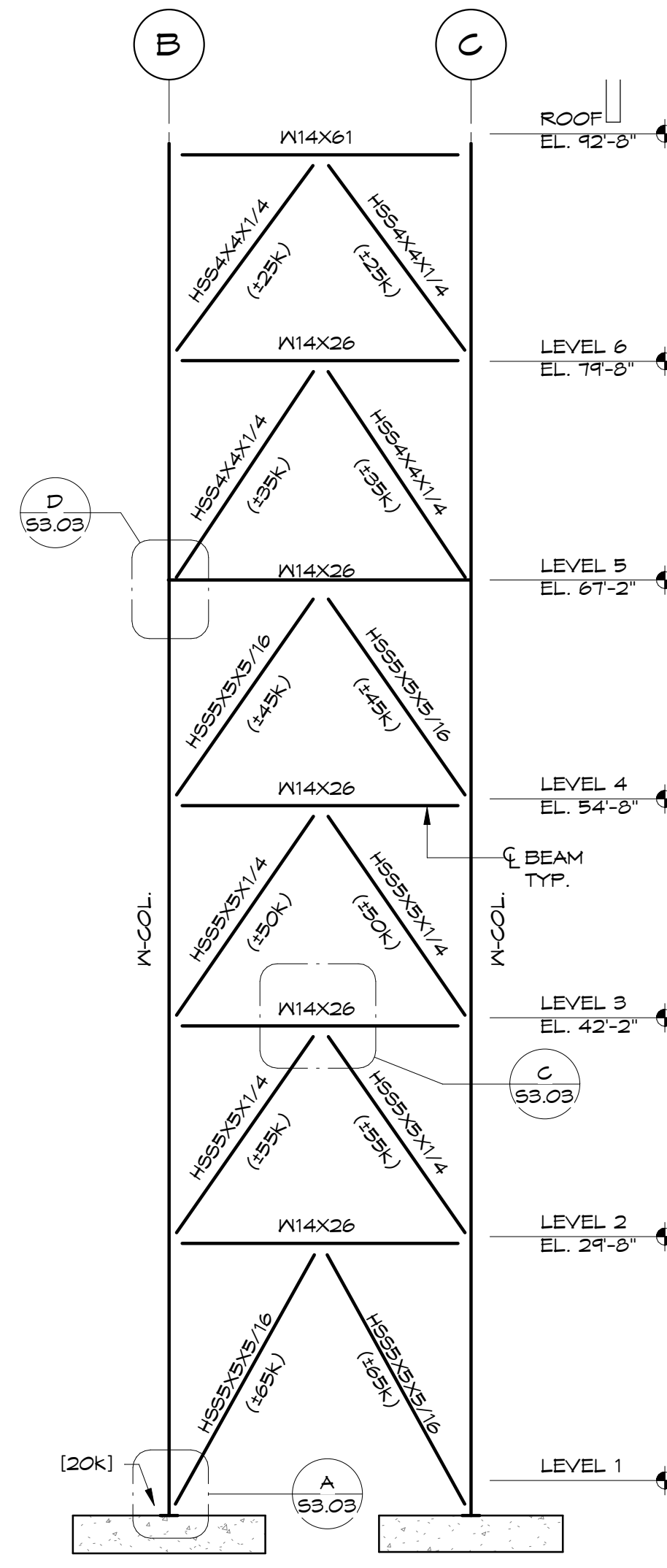


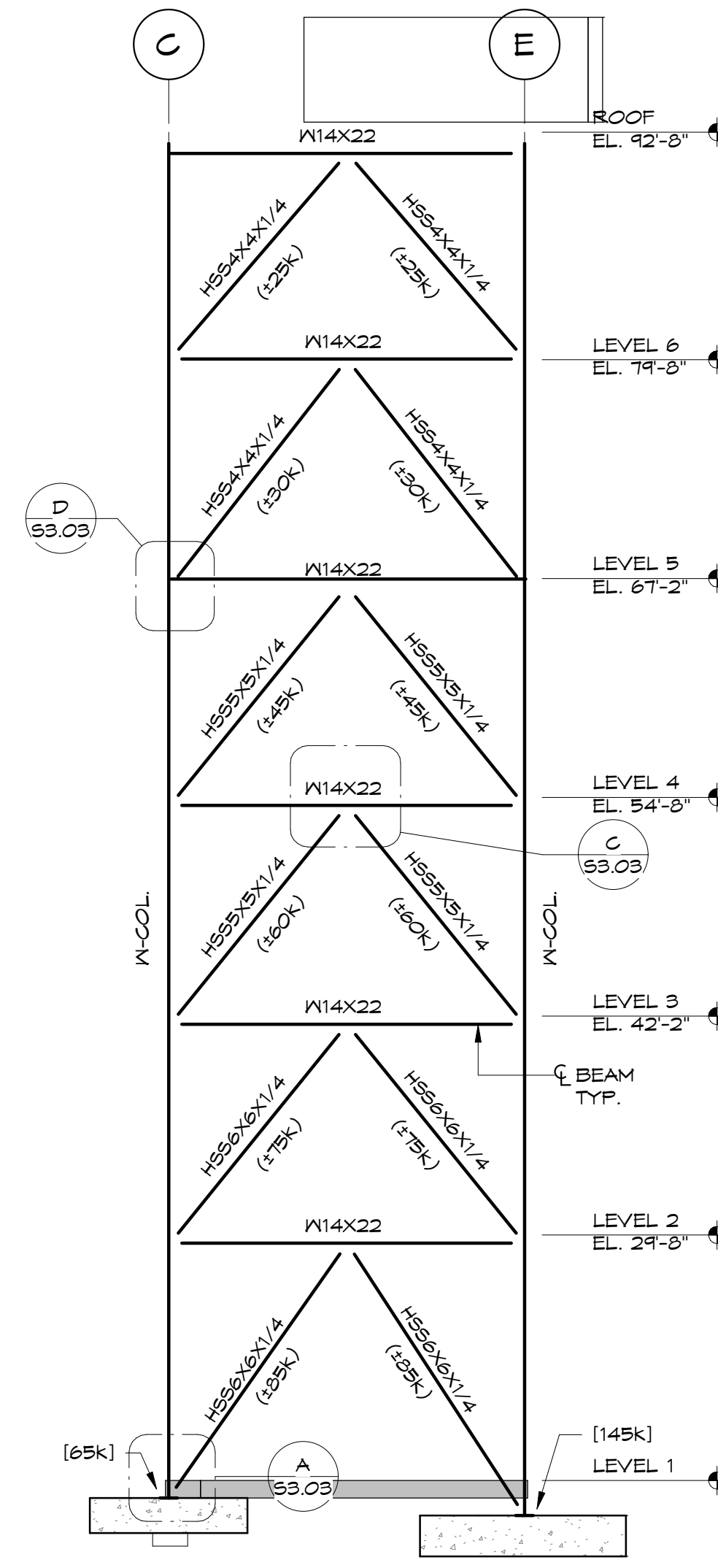
1 BRACE "A" (ALONG GRID 6)
 S3.04 1/8" = 1'-0"



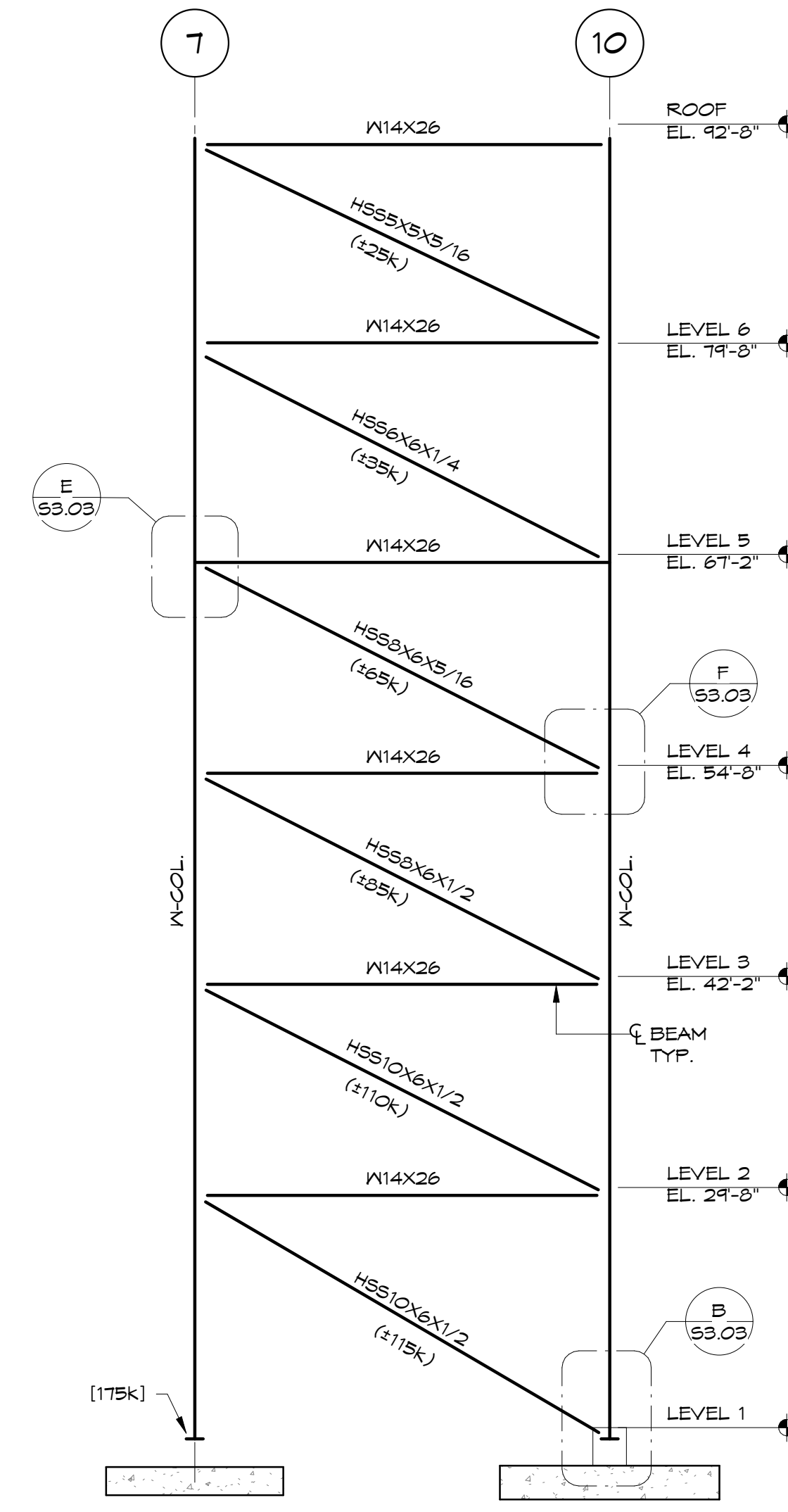
2 BRACE "B" (ALONG GRID 7)
 S3.04 1/8" = 1'-0"



3 BRACE "C" (ALONG GRID 10)
 S3.04 1/8" = 1'-0"



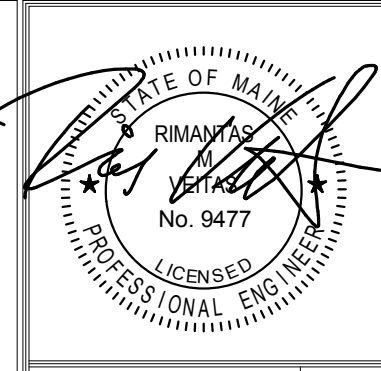
4 BRACE "D" (ALONG GRID 14)
 S3.04 1/8" = 1'-0"



5 BRACE "E" (ALONG GRID F)
 S3.04 1/8" = 1'-0"

NOTE
 (105K) ETC. INDICATES FACTORED (ASD)
 AXIAL FORCE IN THE BRACE MEMBERS FOR
 THE USE IN CONNECTION DESIGN. TO
 CHANGE ASD LOAD TO LRFD MULTIPLY ASD
 BY 1.5 (LRFDx1.5 = ASD).
 (105K) ETC. INDICATES NET UPLIFT

BRACE DETAIL NOTES:
 1. FOR NUMBER, SIZE AND LENGTHS OF
 ANCHOR BOLTS SEE BASE PLATE DETAILS
 2. ALL BRACE GUSSET PLATES TO BE
 3/4" THICK MIN.
 3. DETAILER TO PROVIDE SIZE AND LENGTH
 OF FIELD FILLET WELDS OF HSS BRACE
 TO PLATES ON THE ERECTION DRAWINGS.
 4. SHEAR CAPACITY OF CONNECTION TO
 BE BRACING LOAD PLUS BEAM SHEAR
 INDICATED ON PLANS.
 5. DETAILER TO REVIEW INSTALLATION
 OF BRACE MEMBER. SUBMIT DIAGRAM
 INDICATING HOW BRACE WILL FIT.



Prepared
 Consulting Engineer:
VEITAS VEITAS
 engineers
 68 Granite Street, Suite 101
 Portland, Maine 04104
 Tel: (207) 772-6022 Fax: (207) 772-6023

Architect:
ARCHITYPE
 architects
 48 Union Wharf Portland, Maine
 (207) 772-6022 ARCHITYPE@ARCHITYPEPA.COM

Project:
**THAMES STREET
 BUILDING**
 20 Thames Street, Portland Maine

Revisions
**FOUNDATION PERMIT
 06 / 22 / 2017**

Date: 04/19/2017
 Scale: 1/8" = 1'-0"
**BRACE FRAME
 ELEVATIONS**

S3.04

Owner