

Owner

Prepared
 Consulting Engineer:
VEITAS VEITAS
 engineers
 630 Granite Street, Suite 101
 Portland, Maine 04106
 Tel: 707-602-2400 Fax: 707-602-2405

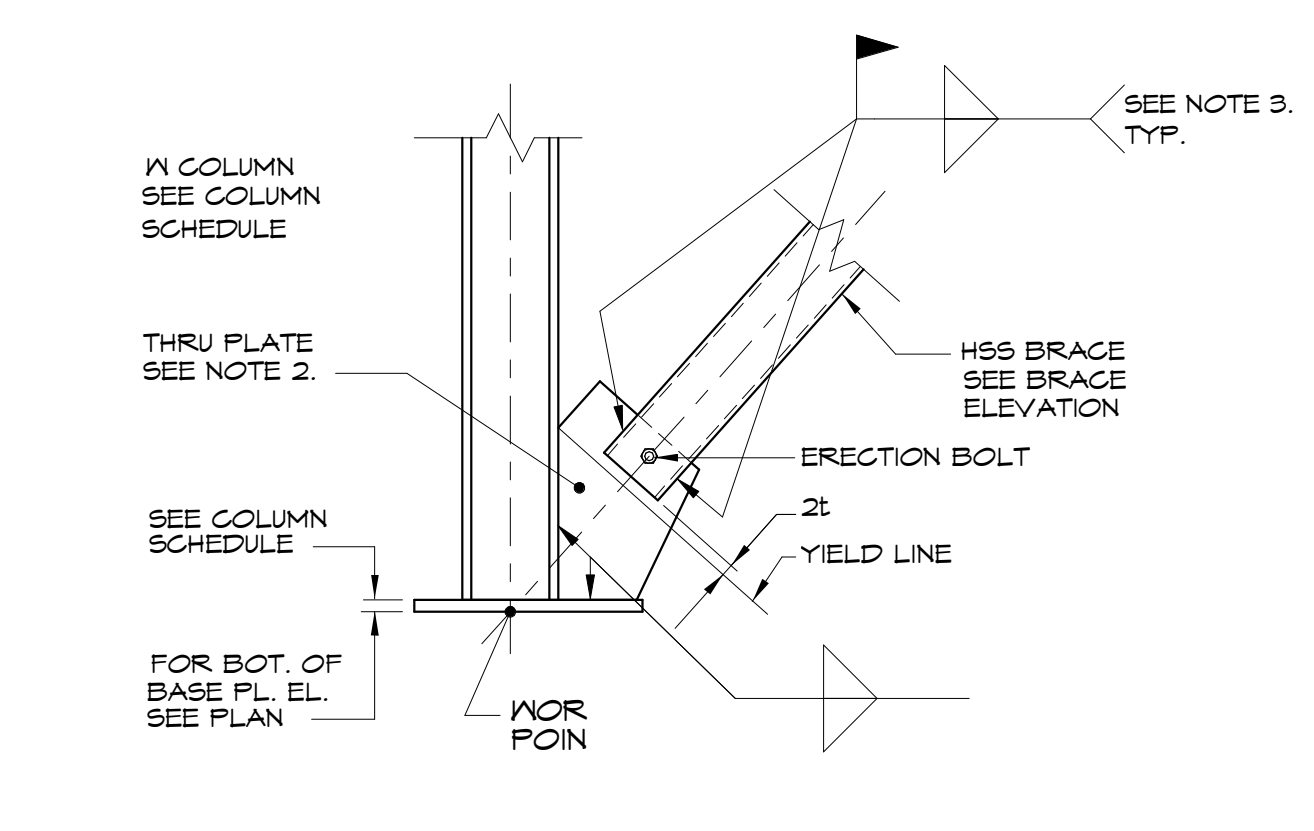
Architect:
ARCHITYPE
 architects
 48 Union Wharf Portland, Maine
 (207) 772-6022 ARCHITYPE@ARCHITYPEPA.COM

Project:
THAMES STREET BUILDING
 20 Thames Street, Portland Maine

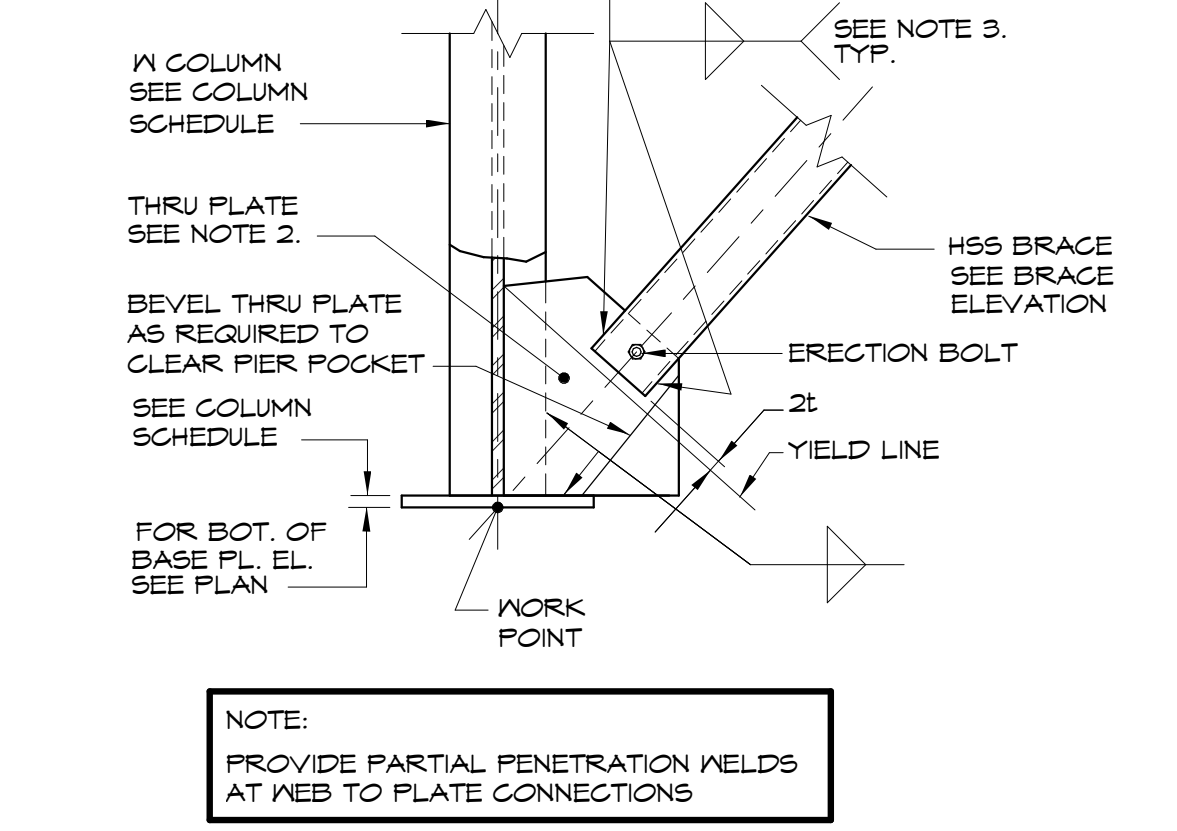
Revisions
FOUNDATION PERMIT
 06 / 22 / 2017

Date: 04/19/2017
 Scale: As indicated
BRACE FRAME DETAILS

S3.03

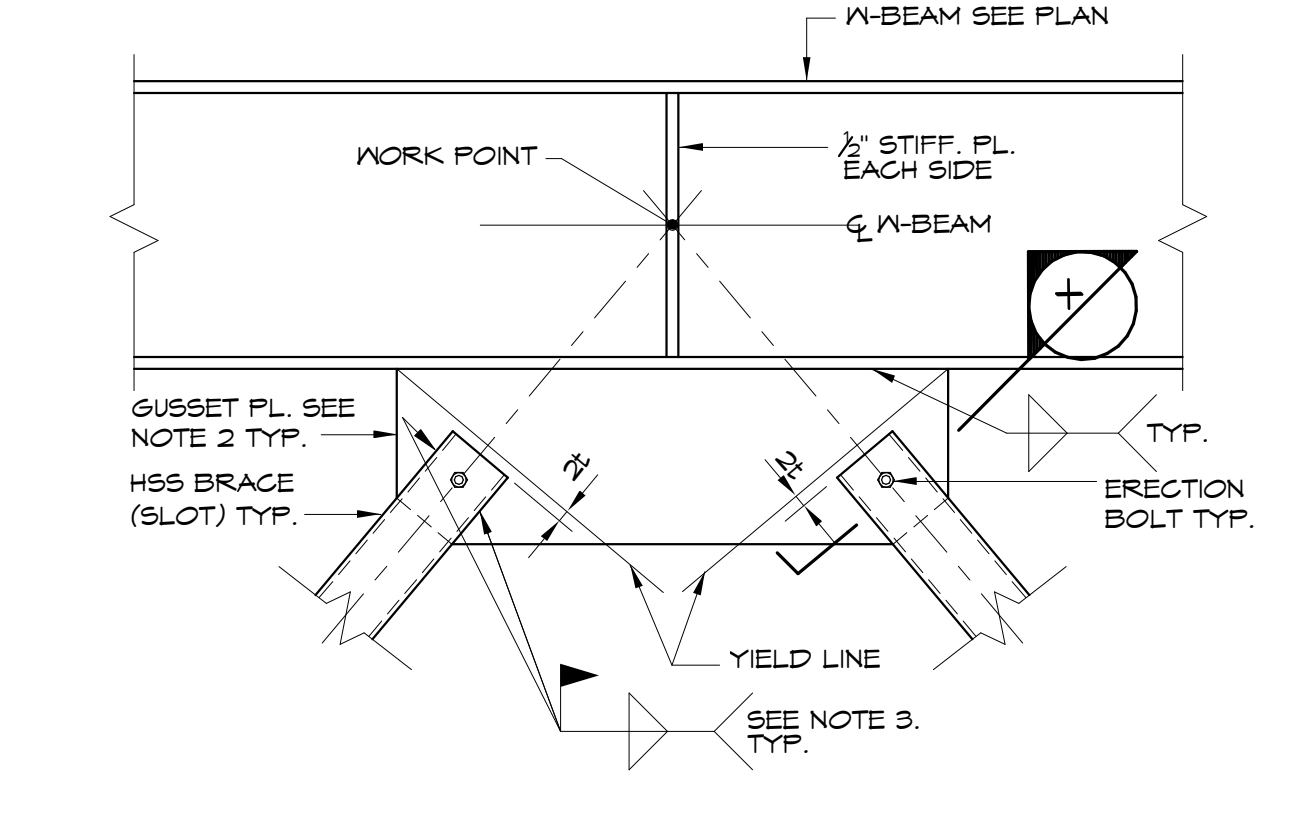


A DETAIL
 S3.03 3/4" = 1'-0"

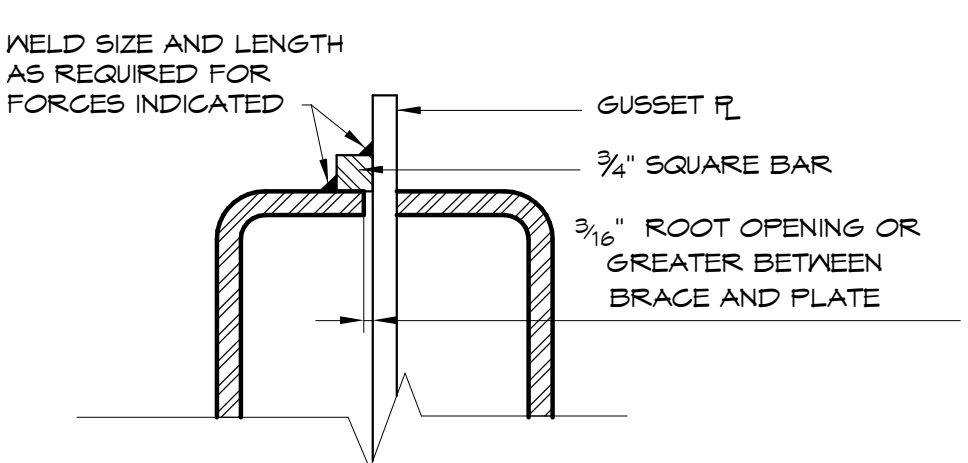


B DETAIL
 S3.03 3/4" = 1'-0"

NOTE:
 PROVIDE PARTIAL PENETRATION WELDS AT NEB TO PLATE CONNECTIONS

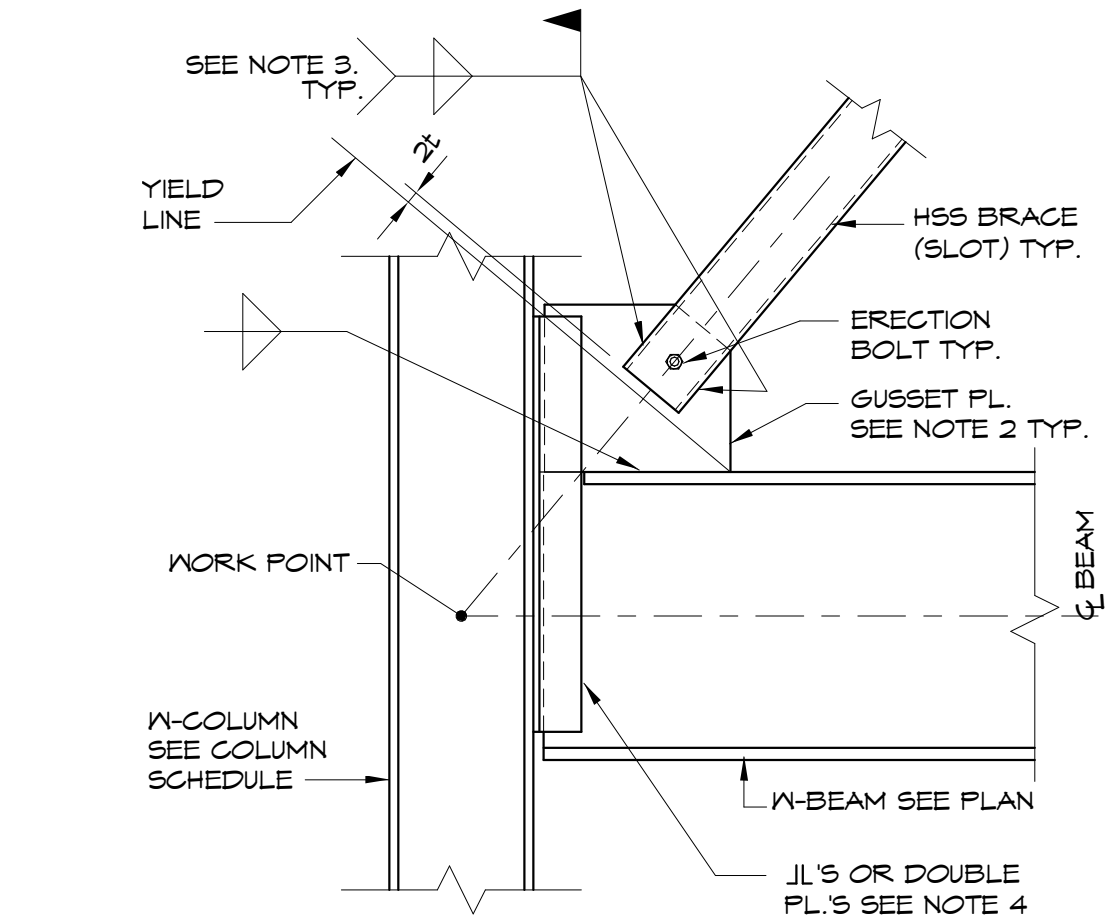


C DETAIL
 S3.03 3/4" = 1'-0"

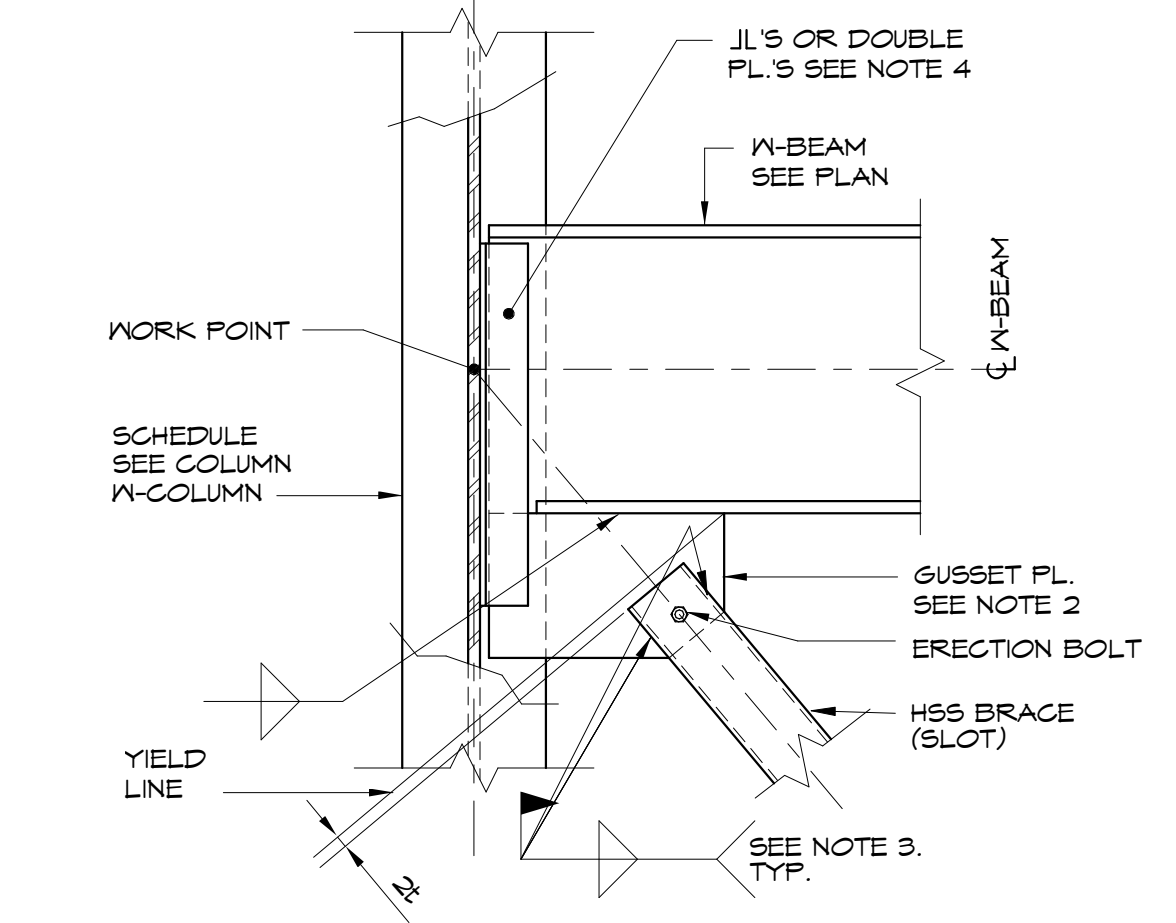


TYPICAL REPAIR OF GAP BETWEEN WELDING SURFACES

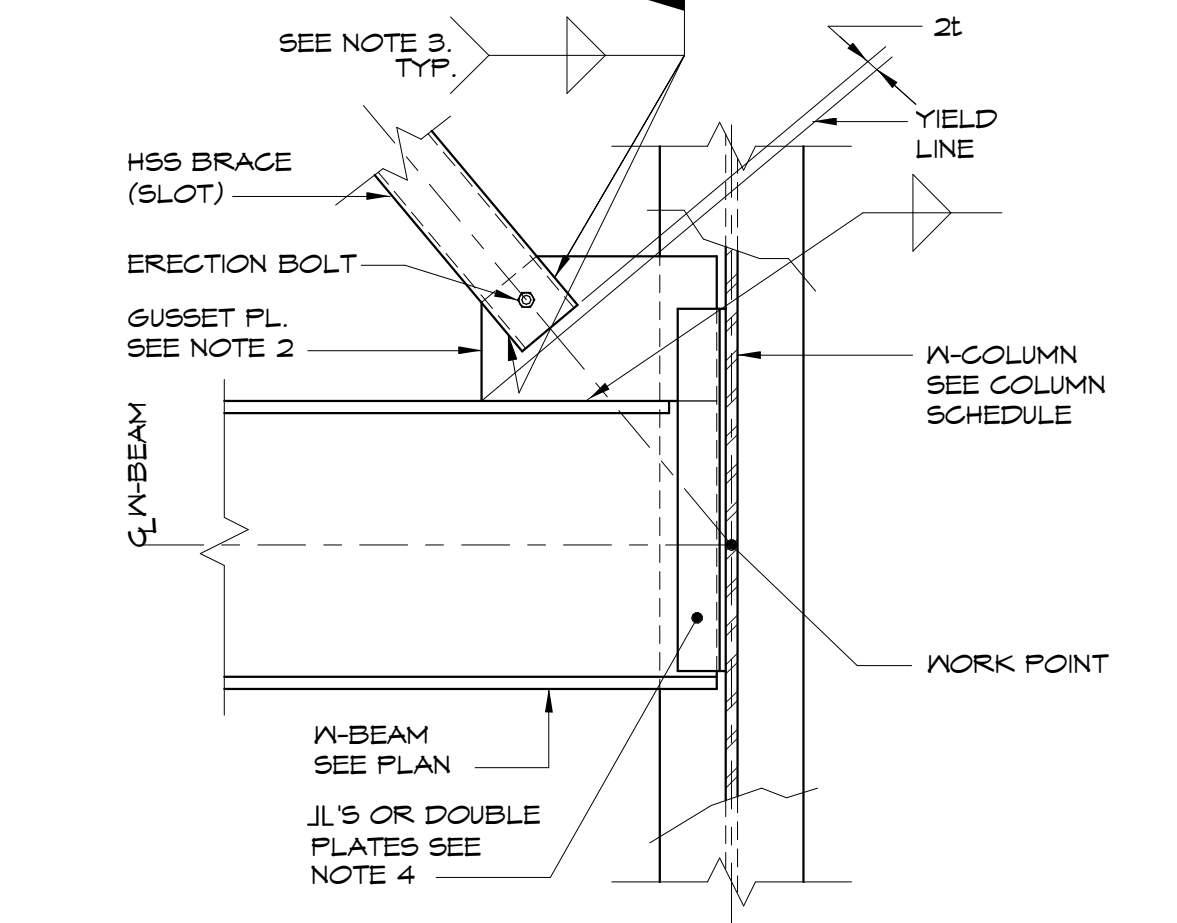
NOTE:
 IF ROOT OPENING IS 1/8" TO 3/16", INCREASE REQUIRED WELD SIZE BY THE OPENING SIZE.



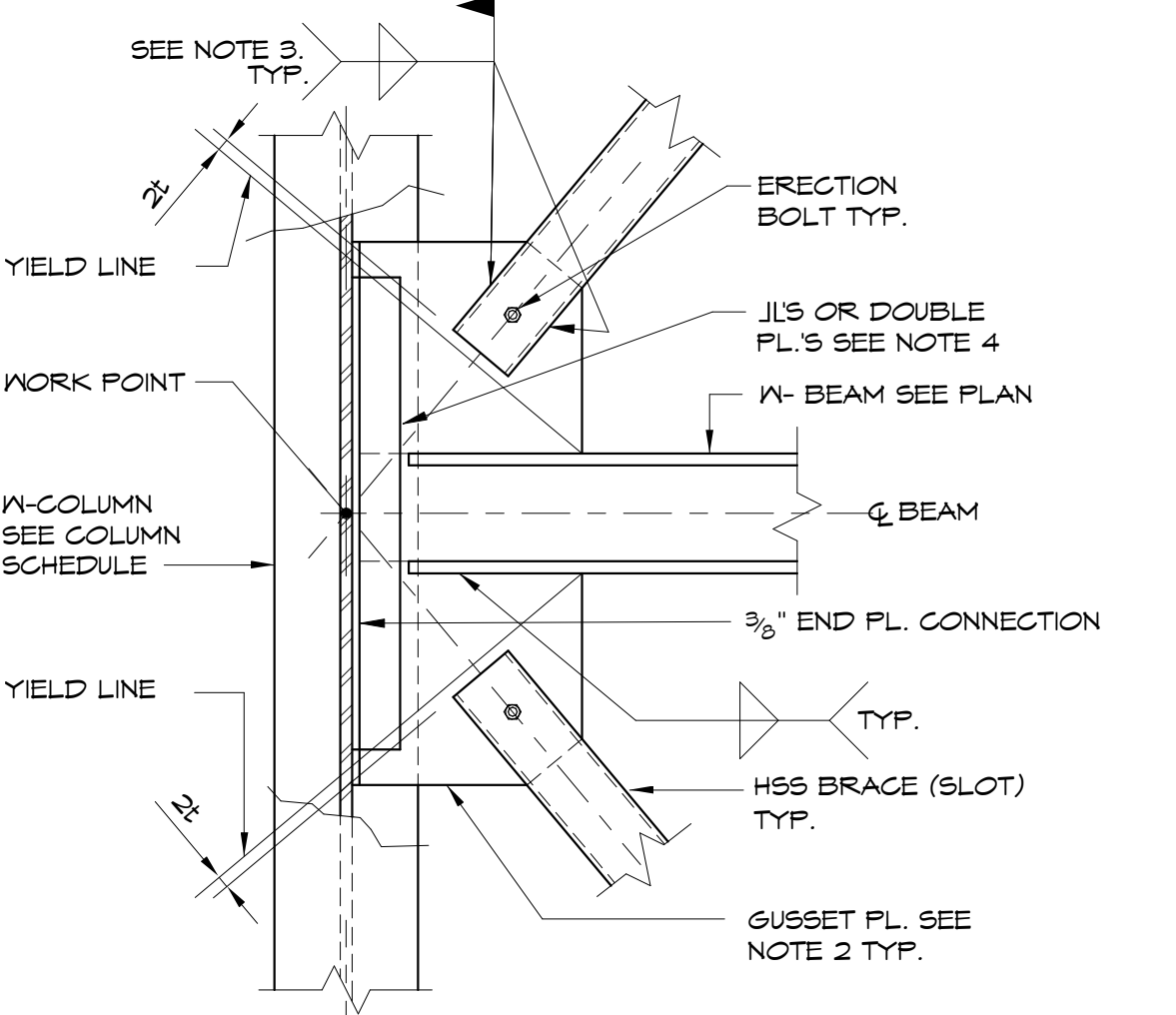
D DETAIL
 S3.03 3/4" = 1'-0"



E DETAIL
 S3.03 3/4" = 1'-0"



F DETAIL
 S3.03 3/4" = 1'-0"



G DETAIL
 S3.03 3/4" = 1'-0"

NOTE
 (105k) ETC. INDICATES FACTORED (ASD) AXIAL FORCE IN THE BRACE MEMBERS FOR THE USE IN CONNECTION DESIGN. TO CHANGE ASD LOAD TO LRFD MULTIPLY ASD BY 1.5 (LRFDx1.5 = ASD).
 (105k) ETC. INDICATES NET UPLIFT

- BRACE DETAIL NOTES:**
1. FOR NUMBER, SIZE AND LENGTHS OF ANCHOR BOLTS SEE BASE PLATE DETAILS
 2. ALL BRACE GUSSET PLATES TO BE 1/2" THICK MIN.
 3. DETAILER TO PROVIDE SIZE AND LENGTH OF FIELD FILLET WELDS OF HSS BRACE TO PLATES ON THE ERECTION DRAWINGS.
 4. SHEAR CAPACITY OF CONNECTION TO BE BRACING LOAD PLUS BEAM SHEAR INDICATED ON PLANS.
 5. DETAILER TO REVIEW INSTALLATION OF BRACE MEMBER. SUBMIT DIAGRAM INDICATING HOW BRACE WILL FIT.