

Owner

Prepared

Consulting Engineer:  
**VEITAS VEITAS**  
 engineers  
 630 Granite Street, Suite 101  
 Portland, Maine 04104  
 Tel: 772-4022 FAX: 772-4023

Architect:  
**ARCHITYPE**  
 architects  
 48 Union Wharf Portland, Maine  
 (207) 772-4022 ARCHITYPE@ARCHITYPEPA.COM

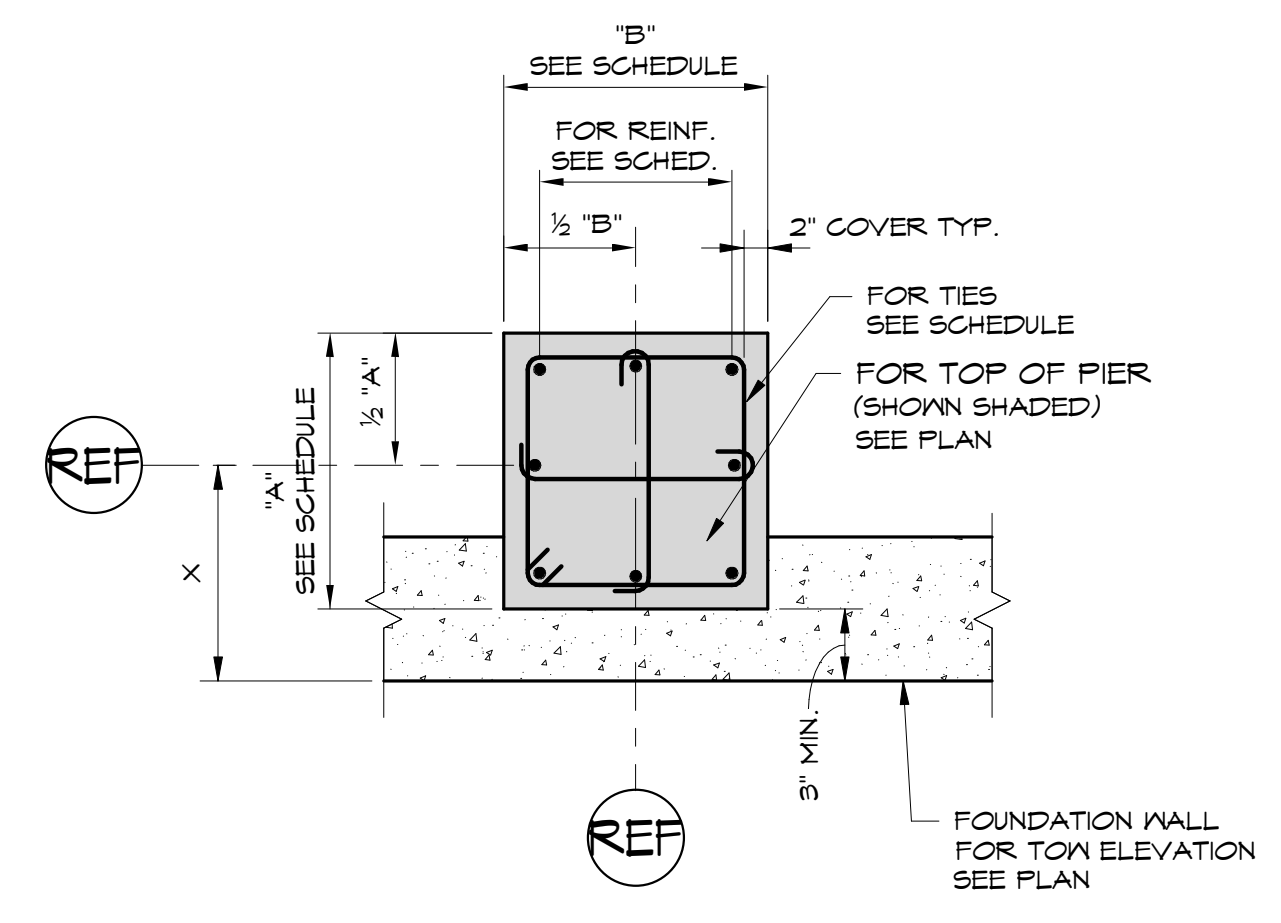
Project:  
**THAMES STREET BUILDING**  
 20 Thames Street, Portland Maine

Revisions  
**FOUNDATION PERMIT**  
 06 / 22 / 2017

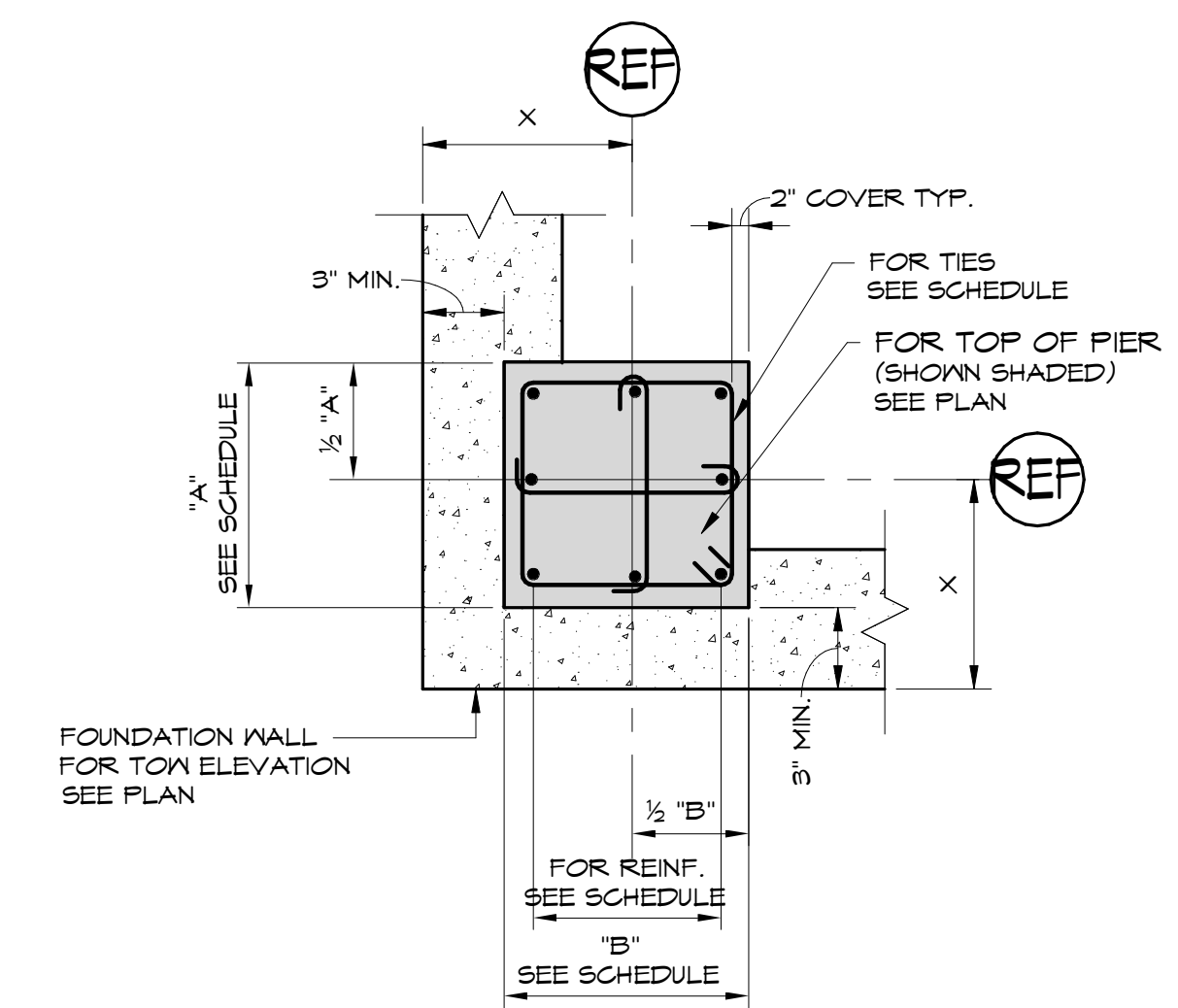
Date: 04/19/2017  
 Scale: 3/4" = 1'-0"  
**PIER DETAILS**

**S3.02**

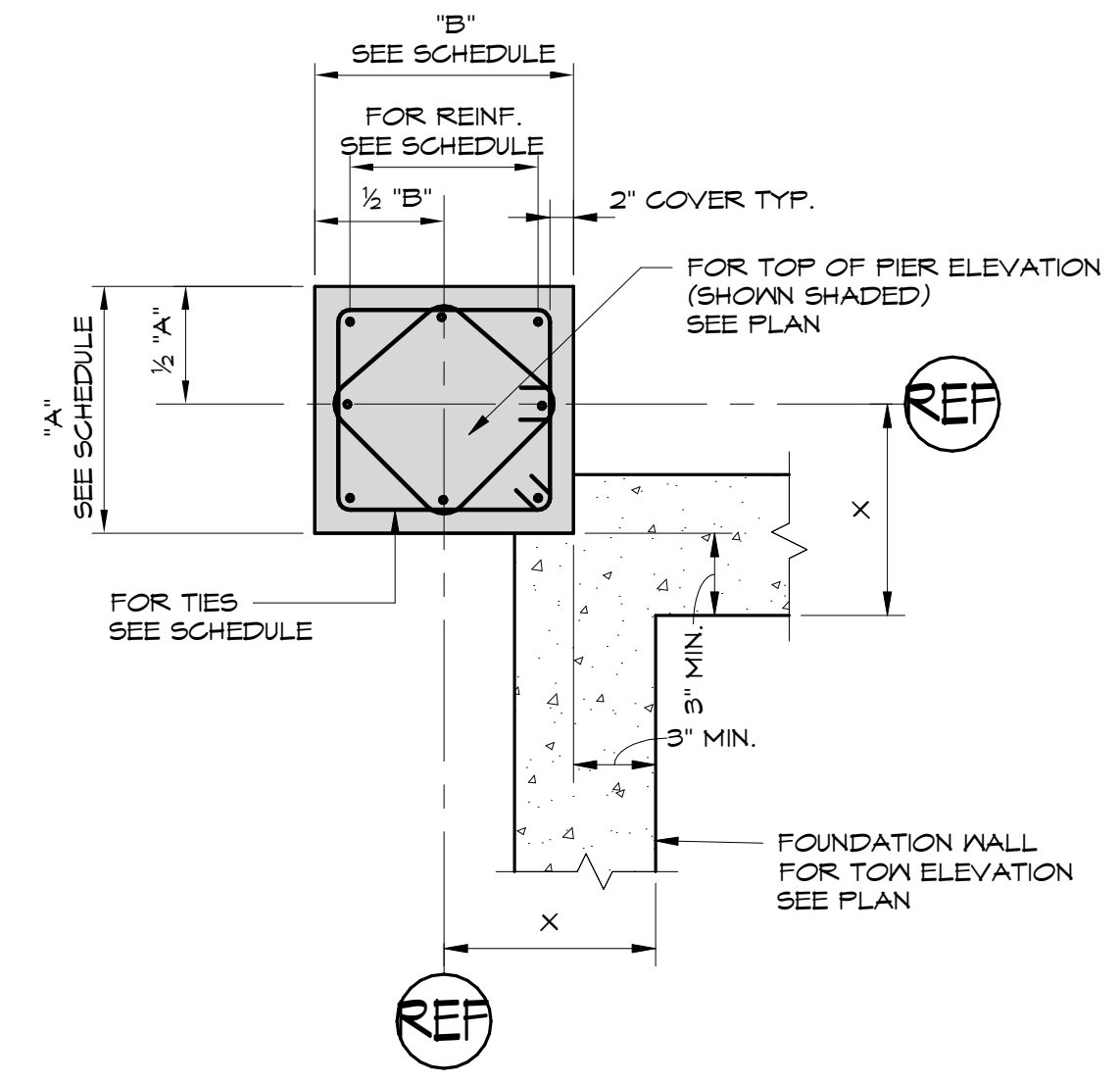
PIER SCHEDULE				
MARK	TYPE	SIZE (AXB)	REINFORCING	TIES
P1	A	24"x24"	8-#8 VERT.	#4@12"
P2	B	24"x24"	8-#8 VERT.	#4@12"
P3	C	24"x24"	8-#8 VERT.	#4@12"
P4				



**PIER DETAIL TYPE A**



**PIER DETAIL TYPE B**



**PIER DETAIL TYPE C**