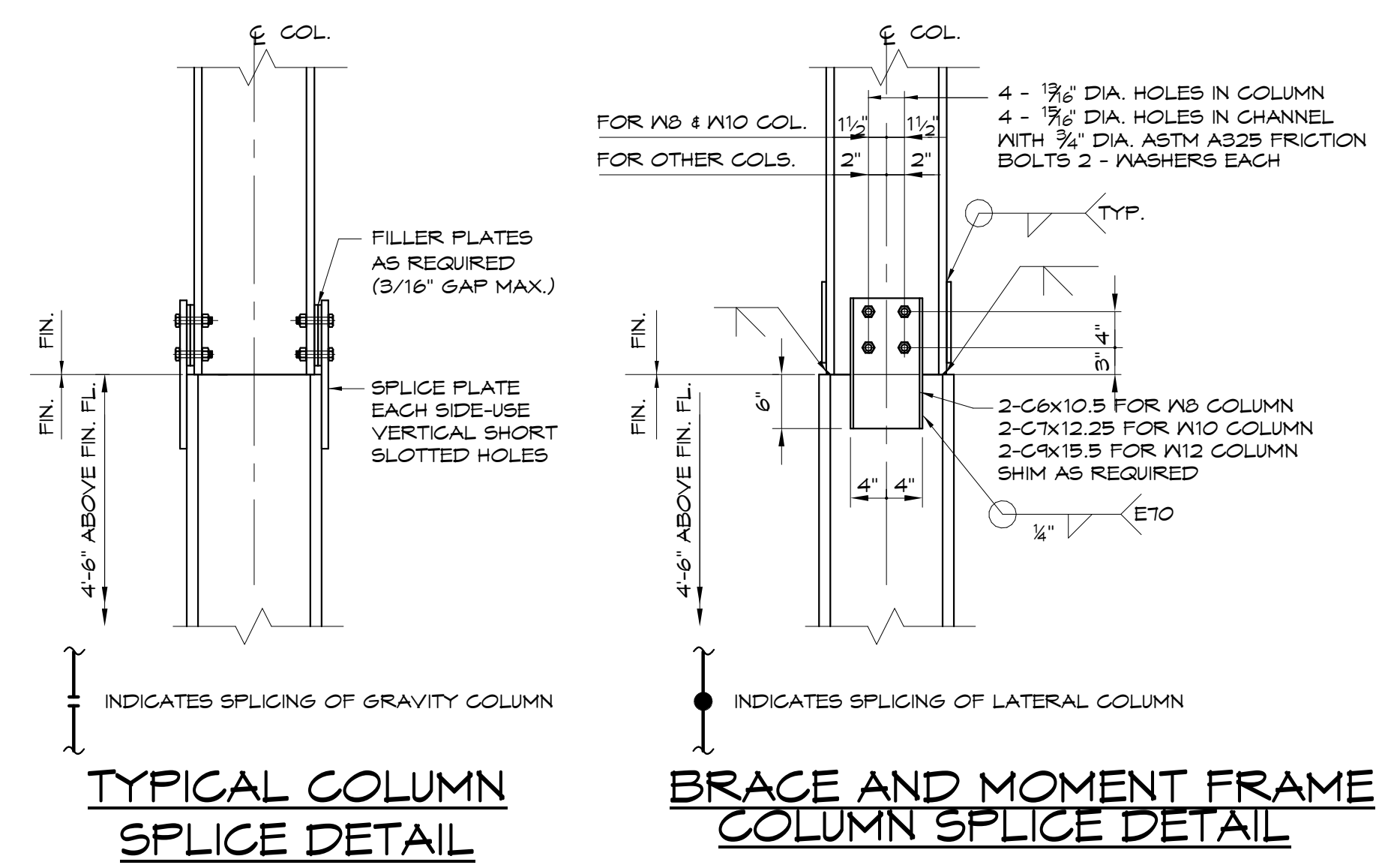


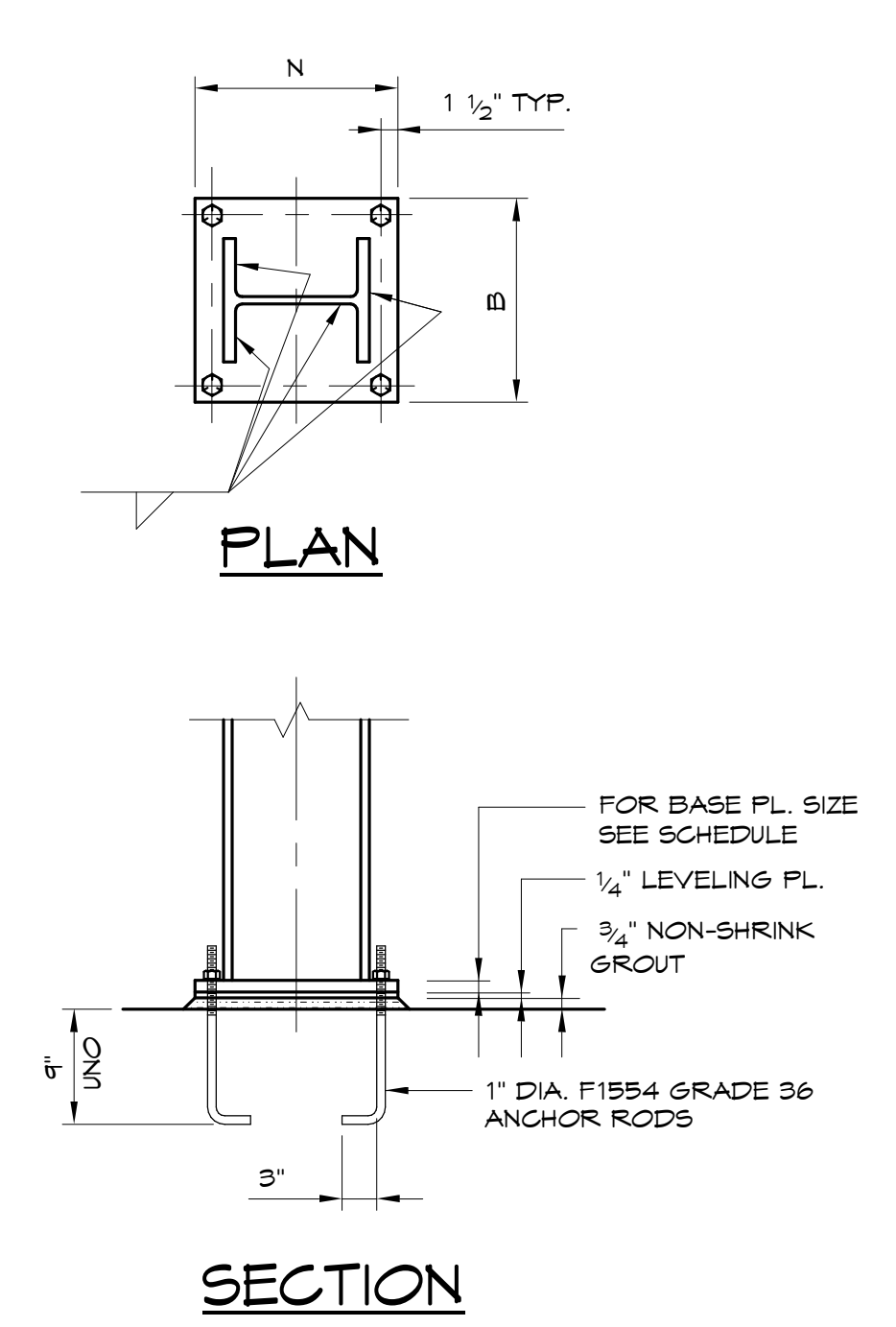
COLUMN SCHEDULE

COL.	C1	C2	C3	C4	C5	C6	C7	C8	C9	C10	C11	C12	C13	C14	C15	C16	C17	C18	C19	C20	C21		
LEVEL																							
ROOF EL. VARIES		M10x33		M10x33	M10x33		M10x33	M10x33	M10x33	PER10M	M10x33	M10x33	M10x33	M10x33	M10x34		M10x33	M10x33	PER10M	M10x33	M10x33		ROOF EL. VARIES
SIXTH FLOOR		M10x33		M10x33	M10x33		M10x33	M10x33	M10x33	PER10M	M10x33	M10x33	M10x33	M10x33	M10x34		M10x33	M10x33	PER10M	M10x33	M10x33		SIXTH FLOOR
FIFTH FLOOR		M10x33		M10x33	M10x33		M10x33	M10x33	M10x33	PER10M	M10x33	M10x33	M10x33	M10x33	M10x34		M10x33	M10x33	PER10M	M10x33	M10x33		FIFTH FLOOR
FOURTH FLOOR		M10x33		M10x33	M10x33		M10x33	M10x33	M10x33	PER10M	M10x33	M10x33	M10x33	M10x33	M10x34		M10x33	M10x33	PER10M	M10x33	M10x33		FOURTH FLOOR
THIRD FLOOR		M10x33		M10x33	M10x33		M10x33	M10x33	M10x33	PER10M	M10x33	M10x33	M10x33	M10x33	M10x34		M10x33	M10x33	PER10M	M10x33	M10x33		THIRD FLOOR
SECOND FLOOR		M10x33		M10x33	M10x33		M10x33	M10x33	M10x33	PER10M	M10x33	M10x33	M10x33	M10x33	M10x34		M10x33	M10x33	PER10M	M10x33	M10x33		SECOND FLOOR
FIRST FLOOR		M10x33		M10x33	M10x33		M10x33	M10x33	M10x33	PER10M	M10x33	M10x33	M10x33	M10x33	M10x34		M10x33	M10x33	PER10M	M10x33	M10x33		FIRST FLOOR
BASE PL. TYPE	A	A	A	A	C	A	A	D	A	B	E	A	B	C	B	D	G	D	E	F	E		
BASE PL. SIZE "N" x "L" x "B"	1'-5" x 1" x 0'-9"	1'-5" x 1" x 0'-9"	1'-5" x 1 1/4" x 0'-9"	1'-5" x 1 1/4" x 0'-9"	1'-5" x 1 1/4" x 0'-9"	1'-5" x 1 1/2" x 0'-9"	1'-5" x 1 1/2" x 0'-9"	1'-5" x 1 1/2" x 0'-9"	1'-5" x 1 1/2" x 0'-9"	1'-5" x 1 1/2" x 0'-9"	1'-5" x 3/4" x 0'-9"	1'-5" x 1 1/2" x 0'-9"	1'-5" x 1 3/4" x 0'-9"	1'-5" x 1 1/2" x 0'-11"	1'-5" x 1 3/4" x 0'-11"	1'-5" x 1 3/4" x 0'-11"	2'-6" x 2 1/2" x 30"	1'-5" x 1 3/4" x 0'-11"	1'-5" x 1 3/4" x 0'-11"	1'-6" x 2 1/4" x 18"	1'-5" x 1 1/4" x 0'-9"		

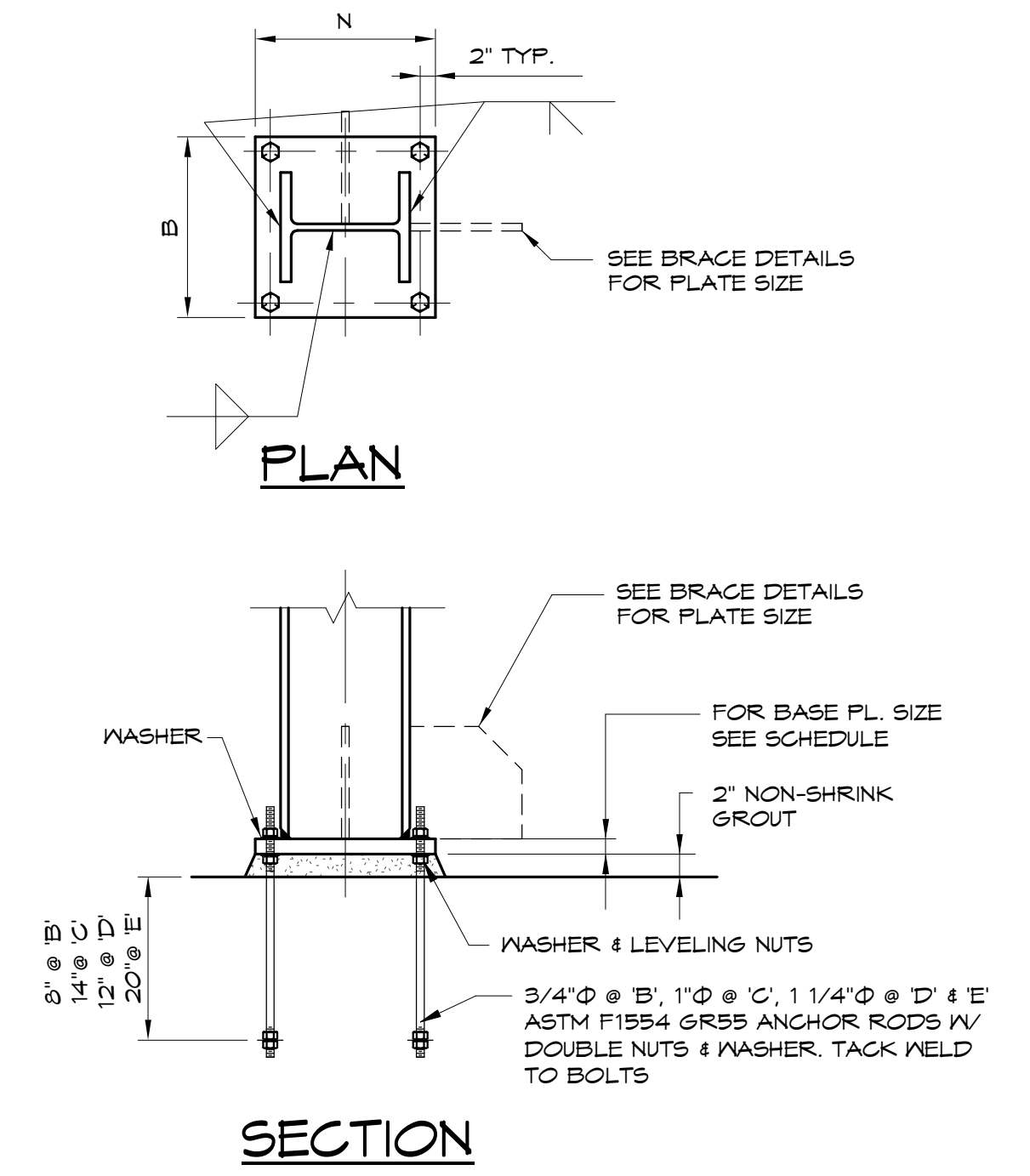
- COLUMN SCHEDULE NOTES:**
- ALL COLUMN STEEL SHALL BE ASTM A572 GRADE 50.
 - ALL BASE PL. STEEL SHALL BE ASTM A36.
 - GRAVITY COLUMN SPLICES SHALL BE 4'-6" A.F.F.
 - CONTRACTOR OPTION TO OMIT UPPER MOST SPLICE



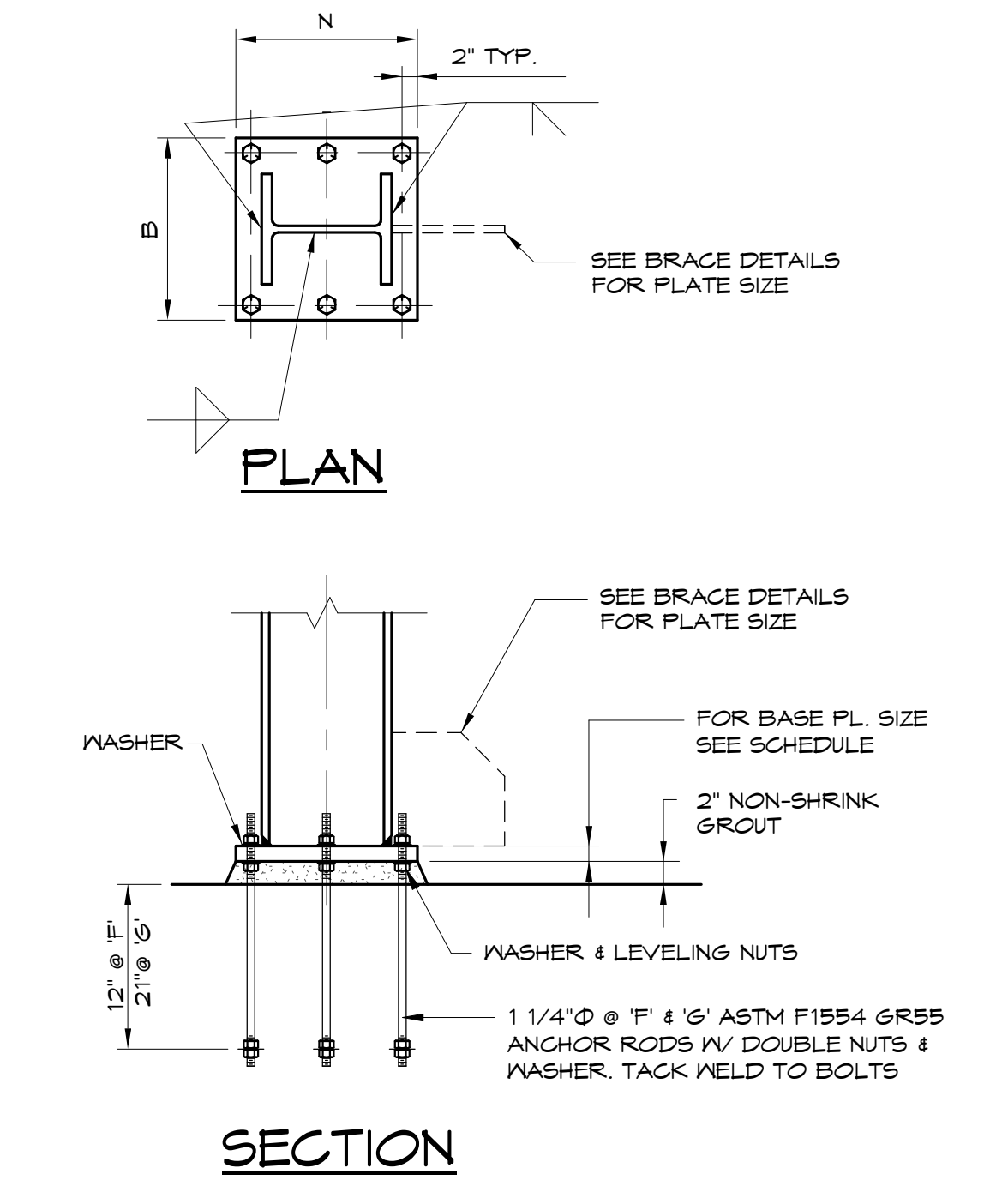
STRUCTURAL STEEL COLUMN SPLICE DETAILS



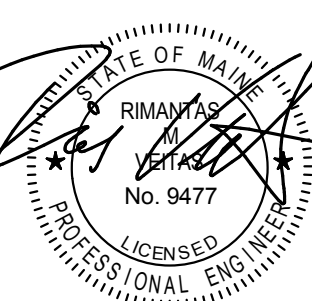
BASE PLATE TYPE 'A'



BASE PLATE TYPES 'B', 'C', 'D', & 'E'



BASE PLATE TYPES 'F', & 'G'



Owner

Prepared

Consulting Engineer:
VEITAS VEITAS
engineers

Architect:
ARCHITYPE
architects

Project:
THAMES STREET BUILDING

Revisions:
FOUNDATION PERMIT
06/22/2017

Date: 04/19/2017
Scale: As indicated

COLUMN SCHEDULE, BASE PLATE & PIER DETAILS

S3.01

68 Granite Street, Suite 101
Portland, Maine 04101
Tel: (207) 772-4022 Fax: (207) 772-4023
www.veitasveitas.com

48 Union Wharf Portland, Maine
(207) 772-4022 ARCHITYPE@ARCHITYPEPA.COM

20 Thames Street, Portland Maine