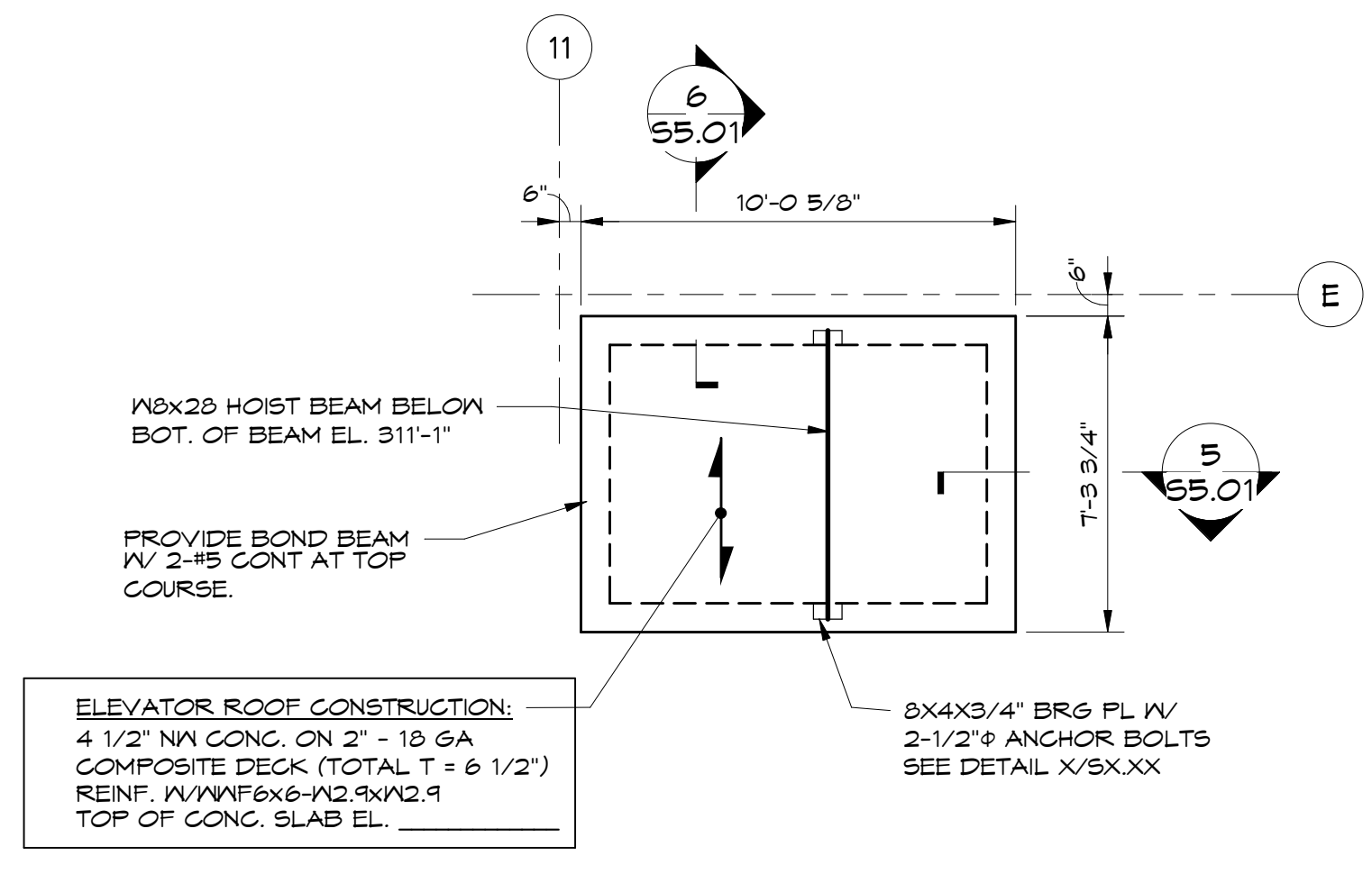
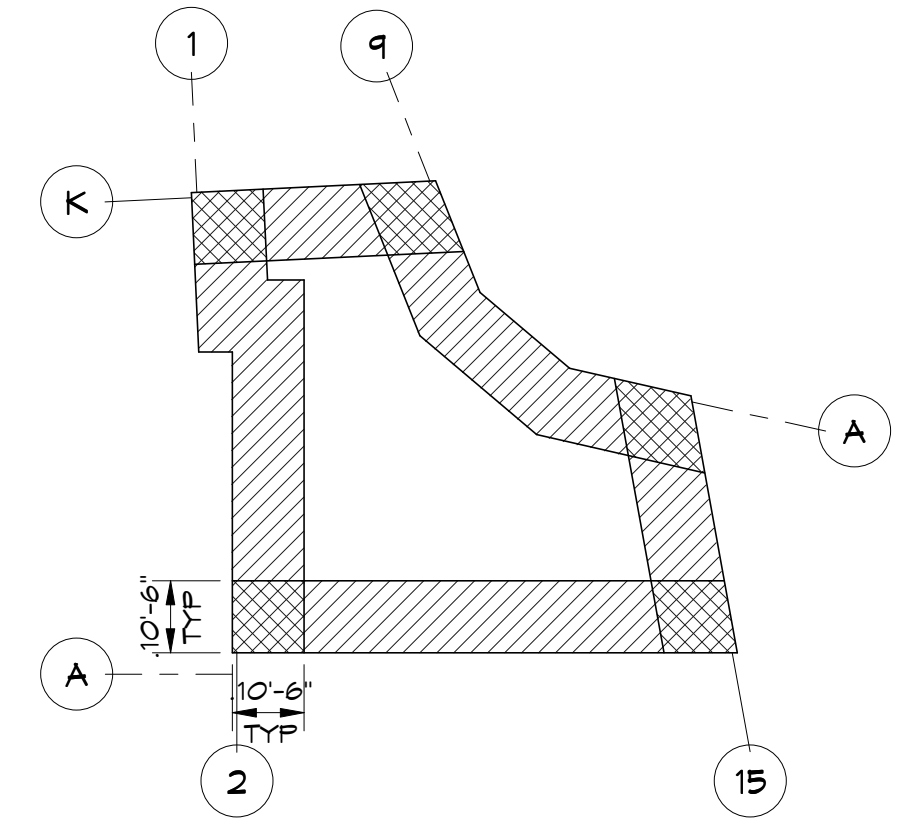


**1 ROOF FRAMING PLAN**  
1/8" = 1'-0"

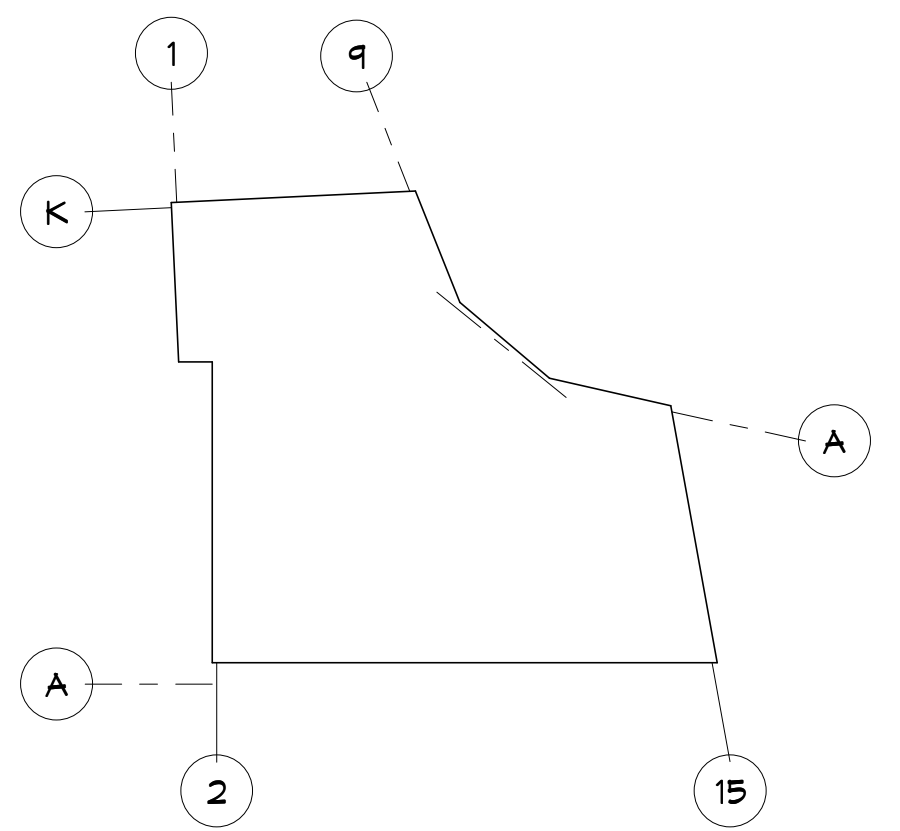


**ELEVATOR ROOF FRAMING PLAN**



**ROOF UPLIFT KEY PLAN**

NOTES:  
 ■■■■ INDICATES AREA WITH 57 PSF NET UPLIFT ON JOISTS  
 ▨▨▨▨ INDICATES AREA WITH 37 PSF NET UPLIFT ON JOISTS  
 □□□□ INDICATES AREA WITH 17 PSF NET UPLIFT ON JOISTS



**ROOF DIAPHRAGM KEY PLAN**

36/4 DENOTES 36" WIDE DECK WITH WELDS AT EVERY OTHER SUPPORT (FLUTE).  
 FASTEN DECK AT 6" O.C. AT PERIMETER OF BUILDING  
 NOTES:  
 ■■■■ USE 36/4 PATTERN  
 ▨▨▨▨ FRAME FASTENING: 5/8" WELDS  
 □□□□ SIDE FASTENING: 1 STITCH #10 SCREWS (BUILDEX)  
 1 1/2" DP. - 22 GA. DECK

- ROOF FRAMING NOTES:**
- FOR TYPICAL DETAILS AND GENERAL NOTES SEE DWG. 52.01 THRU 52.04.
  - TOP OF STEEL (BEAMS AND JOIST GIRDERS) SHALL BE AS INDICATED ON PLAN.
  - (± 0') INDICATES DEVIATION FROM TOP OF STEEL ELEVATION OR JOIST BEARING ELEVATION.
  - "EOD" INDICATES EDGE OF DECK DIMENSION FROM COLUMN GRIDLINE OR OF BEAM IF NO GRIDLINE IS INDICATED.
  - "BRACE X" INDICATES A BRACED FRAME. SEE DRAWINGS 53.04 & 53.05 FOR BRACE ELEVATIONS AND DETAILS.
  - "TOS EL." INDICATES TOP OF STEEL ELEVATION. (TOP OF JOIST 2 1/2" ABOVE TOS ELEVATION UNO).
  - "TOJ EL." INDICATES TOP OF JOIST ELEVATION.
  - "BOS EL." INDICATES BOTTOM OF STEEL ELEVATION.
  - INDICATES SPAN OF METAL DECK.
  - "JH" INDICATES BEAM ELEVATION AT JOIST HEIGHT. (TOP OF STEEL BEAM = TOP OF JOIST ELEVATION).
  - INDICATES UPLIFT (HORIZONTAL) BRIDGING AT FIRST PANEL POINT OF BOTTOM CHORD OF JOISTS.
  - INDICATES HORIZONTAL BRIDGING OF TOP AND BOTTOM CHORD OF JOISTS.
  - ≡≡≡≡ INDICATES (WELDED) CROSS BRIDGING OF JOISTS.
  - ⊗⊗⊗ INDICATES CONCENTRATED LOAD IN KIPS ON JOIST.
  - ⊞⊞⊞ INDICATES ADDITIONAL CONCENTRATED LOAD IN KIPS AT JOIST GIRDER PANEL POINT.
  - PROVIDE PUDDLE WELDS AND SIDELAP FASTENERS PER ROOF DIAPHRAGM KEY PLAN.
  - PROVIDE THE JOIST DETAIL AT ALL JOISTS THAT FRAME INTO COLUMNS OR ARE DESIGNATED "TJ."
  - ALL MECHANICAL AND ELECTRICAL CONDUITS, PIPING, AND HUNG SOFFITS SHALL BE SUSPENDED FROM STEEL BEAMS, JOIST GIRDERS OR JOISTS. THESE ITEMS SHALL NOT BE HUNG FROM THE METAL DECK. THIS SUPPLEMENTARY FRAMING SHALL BE SUPPLIED BY THE RESPECTIVE TRADES.
  - LOCATIONS AND DIMENSIONS SHOWN FOR RTUS AND OPENINGS ARE FROM FACE TO FACE OF ANGLES OR FACE OF ANGLES TO CENTER OF JOIST. THE SIZE AND LOCATION OF ROOF OPENING FRAMES SHALL BE VERIFIED AND COORDINATED BY THE GENERAL CONTRACTOR AND THE MECHANICAL CONTRACTOR. THIS SUPPLEMENTARY FRAMING SHALL BE SUPPLIED BY THE RESPECTIVE TRADES. REFER TO "ROOF OPENING AND ROOF TOP UNIT SUPPORT" ON DRAWING 5X.X FOR FRAMING INFORMATION.
  - JOIST BEARING ELEVATIONS TO BE SUPPLIED ON ERECTION PLAN BY JOIST MANUFACTURER.
  - FOR BEARING PLATE SCHEDULE, SEE DWG. 5X.X.
  - <—> INDICATES DRAG FORCE IN TOP CHORD OF JOIST GIRDER OR WIDE FLANGE BEAM.
  - JOISTS SHALL BE DESIGNED FOR WIND UPLIFT AS INDICATED ON ROOF UPLIFT KEY PLAN.

**STATE OF MAINE**  
**REGISTERED PROFESSIONAL ENGINEER**  
 RIMANIS  
 No. 9477

---

Prepared  
 Consulting Engineer  
**VEITAS VEITAS**  
 engineers  
 68 Granite Street, Suite 101  
 Portland, Maine 04108  
 Tel: (707) 462-2200 Fax: (707) 462-2205

Architect  
**ARCHETYPE**  
 architects  
 48 Union Wharf Portland, Maine  
 (207) 772-6022 ARCHETYPE@ARCHETYPEPA.COM

Project  
**THAMES STREET BUILDING**  
 FOUNDATION PERMIT  
 06 / 22 / 2017

Revisions  
 Scale: As indicated  
 Date: 04/19/2017  
**ROOF FRAMING PLAN**

Owner  
 20 Thames Street, Portland Maine

---

S1.06