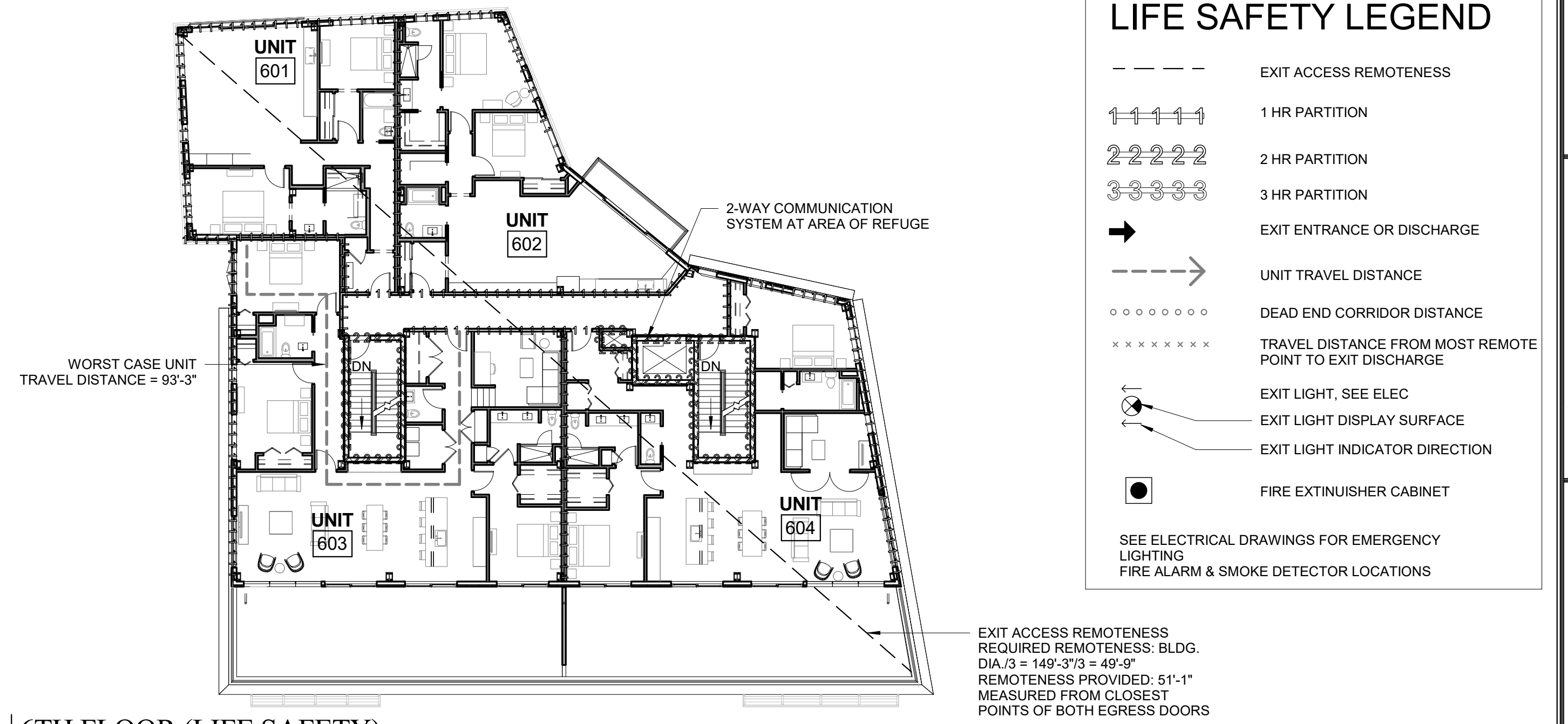
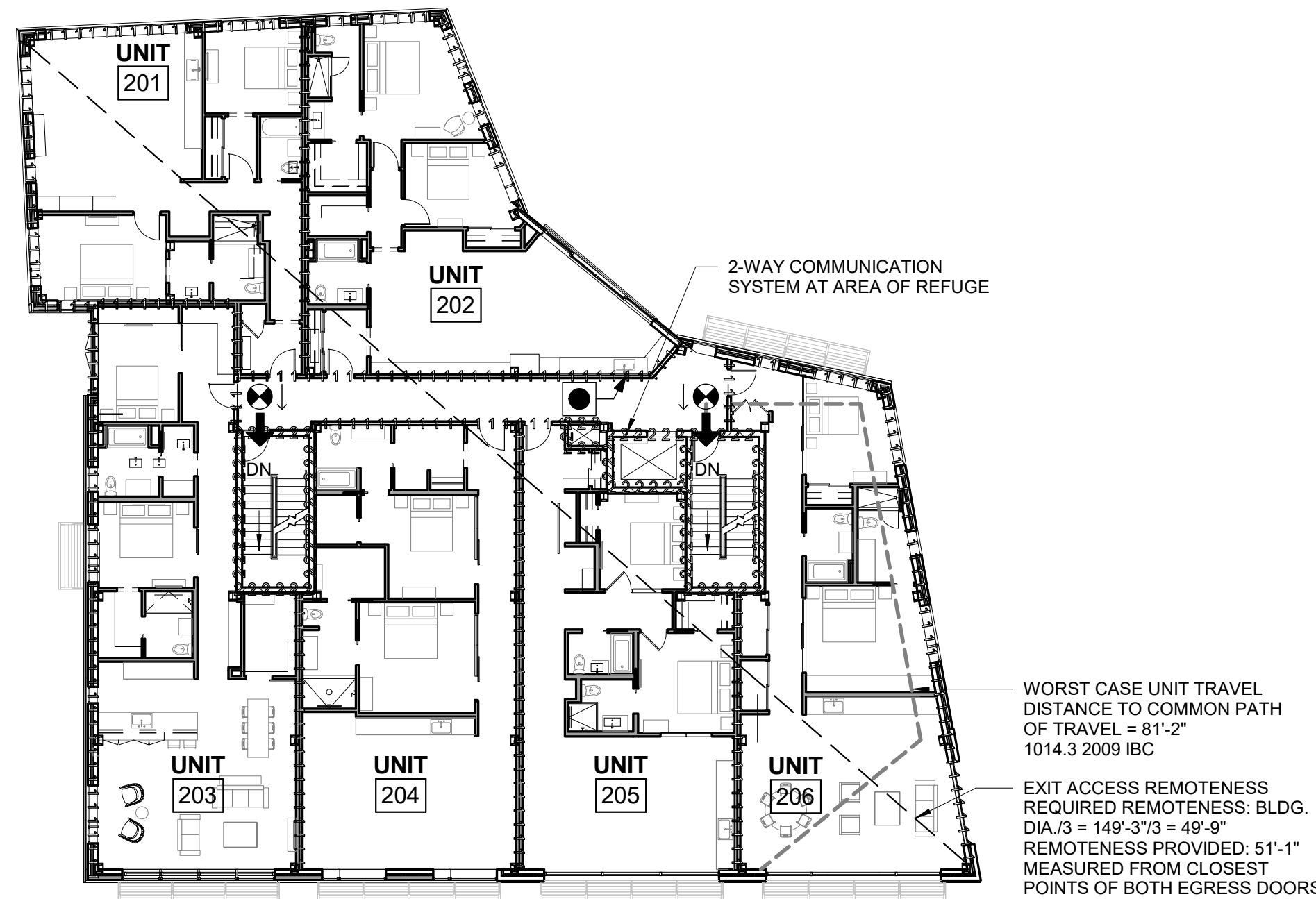


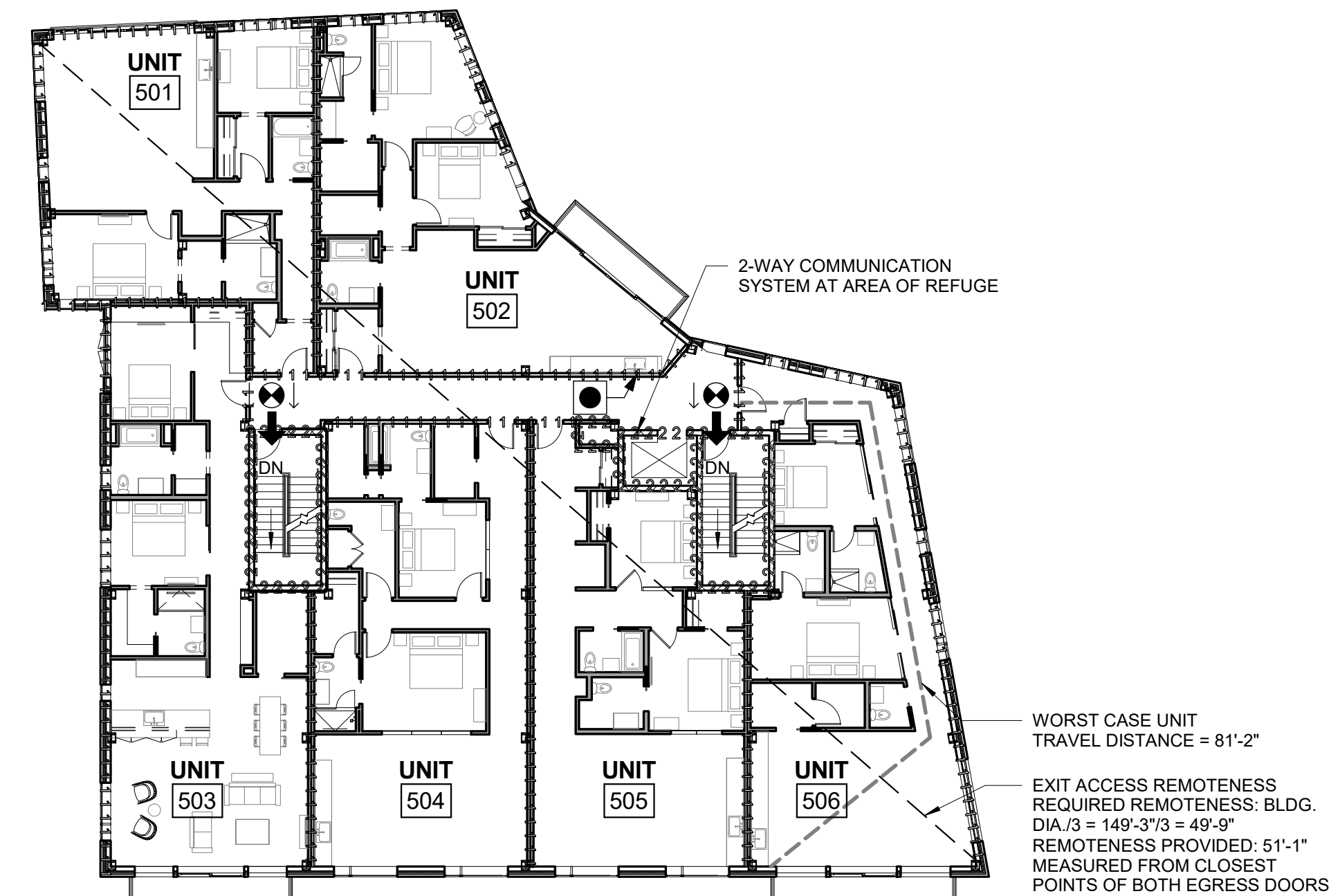
3 | 3RD FLOOR (LIFE SAFETY)
1/16" = 1'-0"



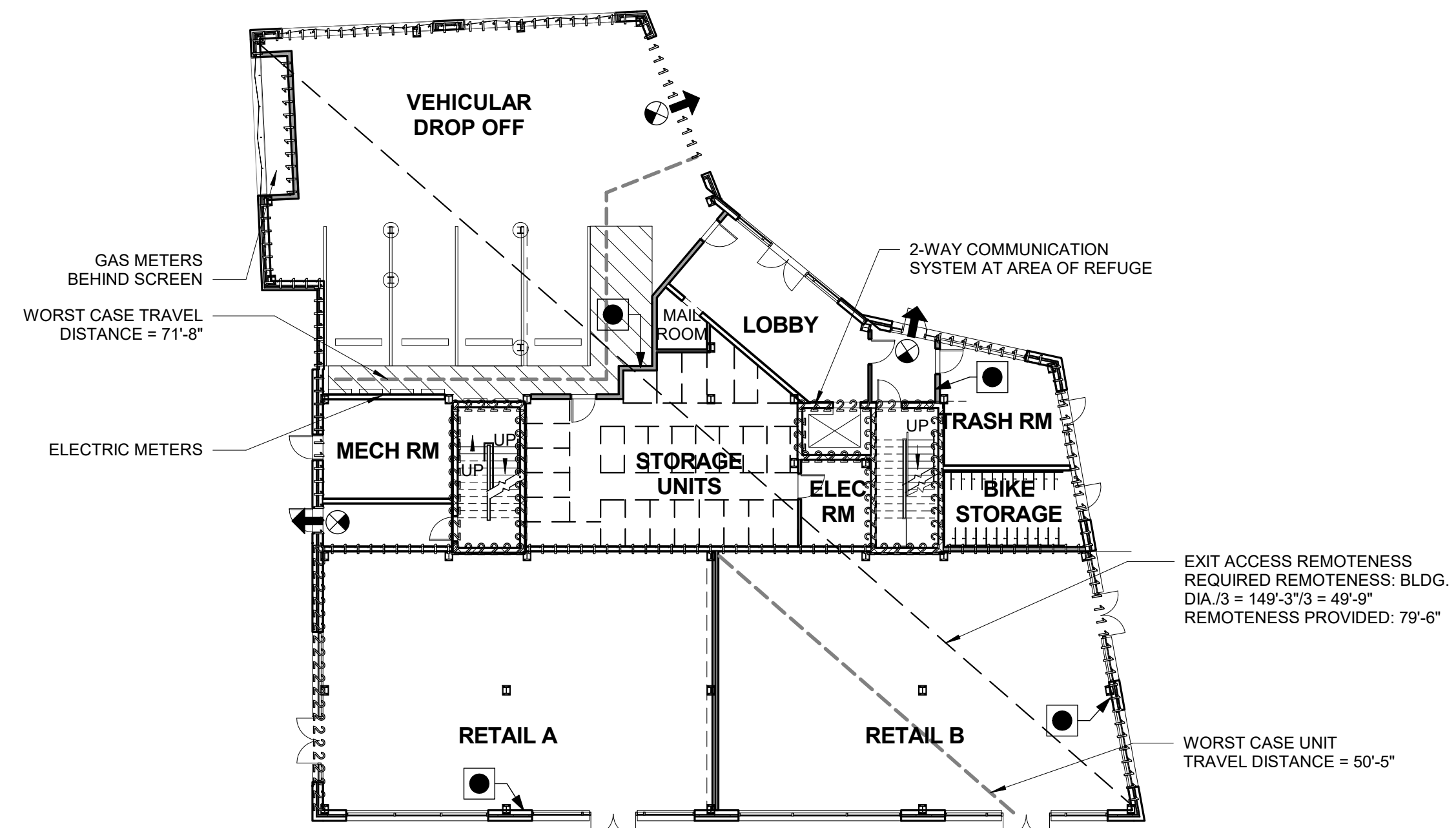
6 | 6TH FLOOR (LIFE SAFETY)
1/16" = 1'-0"



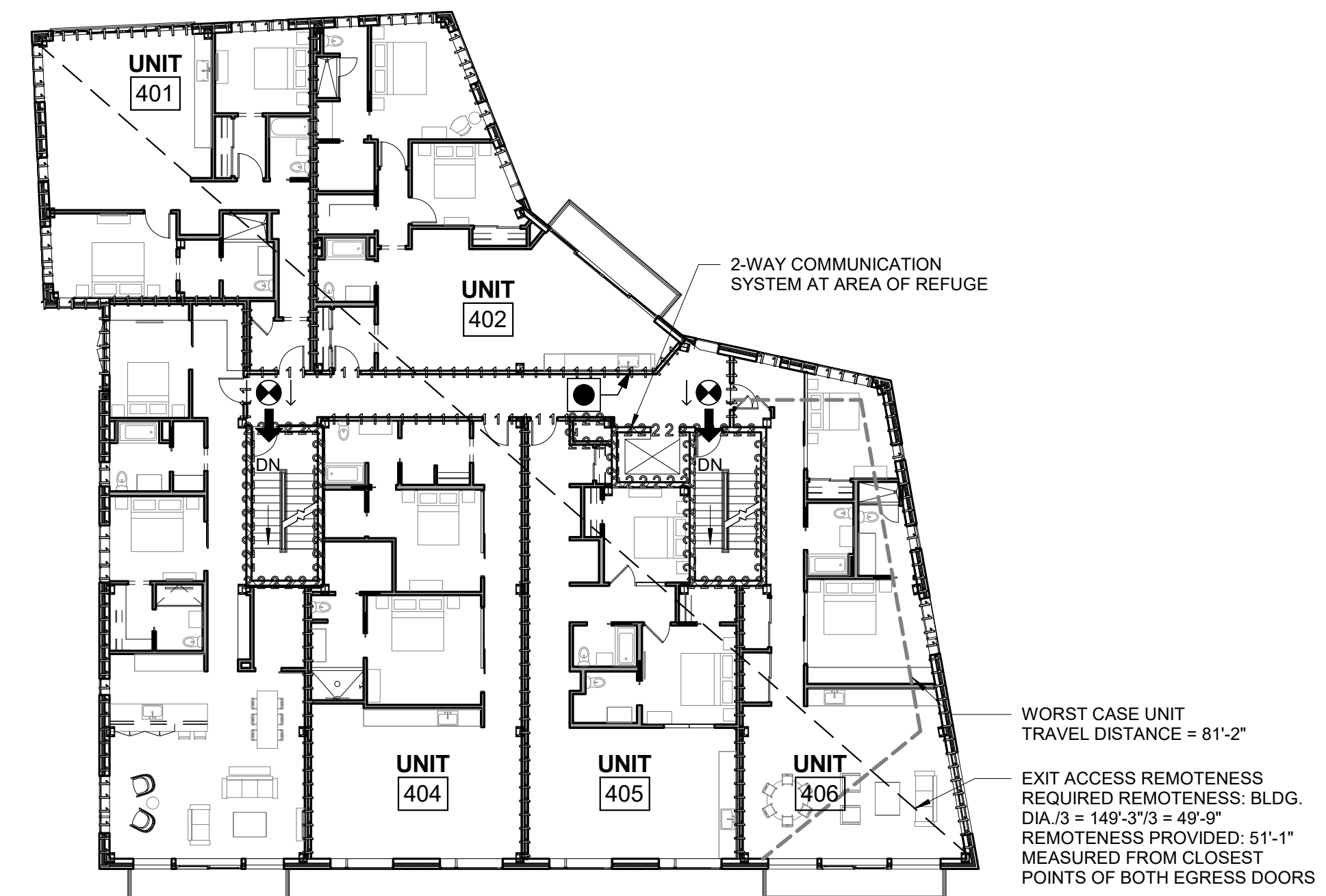
2 | 2ND FLOOR (LIFE SAFETY)
1/16" = 1'-0"



5 | 5TH FLOOR (LIFE SAFETY)
1/16" = 1'-0"



1 | 1ST FLOOR - LIFE SAFETY
1/16" = 1'-0"



4 | 4TH FLOOR (LIFE SAFETY)
1/16" = 1'-0"

LIFE SAFETY LEGEND

- EXIT ACCESS REMOTENESS
- 1-1-1-1-1 1 HR PARTITION
- 2-2-2-2-2 2 HR PARTITION
- 3-3-3-3-3 3 HR PARTITION
- ➔ EXIT ENTRANCE OR DISCHARGE
- - - - - UNIT TRAVEL DISTANCE
- o o o o o o o DEAD END CORRIDOR DISTANCE
- x x x x x x x TRAVEL DISTANCE FROM MOST REMOTE POINT TO EXIT DISCHARGE
- ⦿ EXIT LIGHT, SEE ELEC
- ➔ EXIT LIGHT DISPLAY SURFACE
- ➔ EXIT LIGHT INDICATOR DIRECTION
- FIRE EXTINGUISHER CABINET

SEE ELECTRICAL DRAWINGS FOR EMERGENCY LIGHTING
FIRE ALARM & SMOKE DETECTOR LOCATIONS

Prepared For: **EssexNorth Portland LLC**
P.O. Box 394
Topsfield, MA 01983

Consultant: **ARCHETYPE architects**
48 Union Wharf Portland, Maine 04101
(207) 772-6022 Fax (207) 772-4056

Project: **THAMES STREET BUILDING**
20 Thames Street, Portland Maine

Revisions: 1 | 06/22/17 FOUNDATION PERMIT

Date: JUNE 22, 2017
Scale: As indicated

LIFE SAFETY
LS1.1