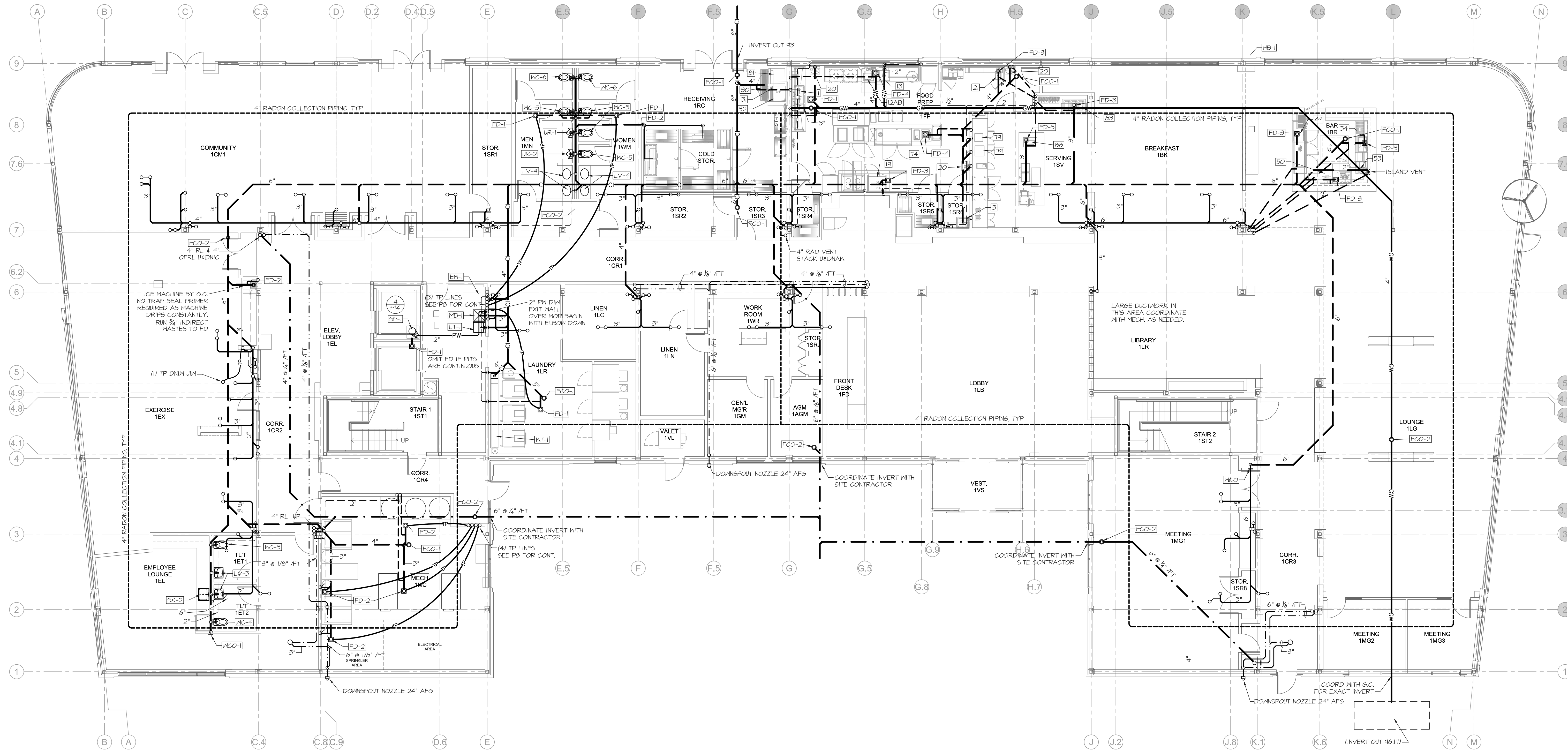
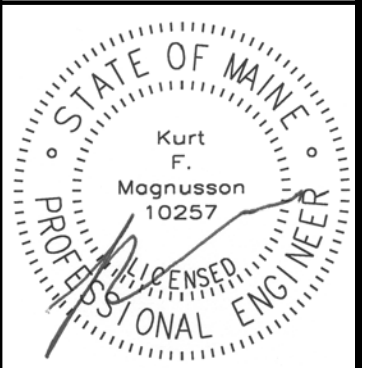


Copyright 2016 Opechee Construction Corporation  
May 23, 2017 - 1:55 pm  
X:\Projects\1632 Marriott AC\Post-Bid\1632 P1-P13 (5-23-17).dwg



**MECHANICAL SYSTEMS ENGINEERS**  
ROYAL RIVER CENTER, UNIT 10B  
10 FOREST FALLS DRIVE, YARMOUTH, MAINE 04096  
(207) 846-1441  
FACEBOOK: MECHANICAL SYSTEMS ENGINEERS  
© COPYRIGHT 2016  
M.S.E. Proj. 1632



**AC HOTELS by MARRIOTT**  
Fore Street / Hancock Street / Thames Street  
Portland, Maine

REVISION:

ISSUED:  
RELEASED FOR PRICING 12/21/2016  
REVISED 5/23/2017

project architect: KAK  
drawn by: EJP

FIRST FLOOR  
DRAIN AND  
VENT PLAN

sheet number:  
**P1**