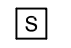


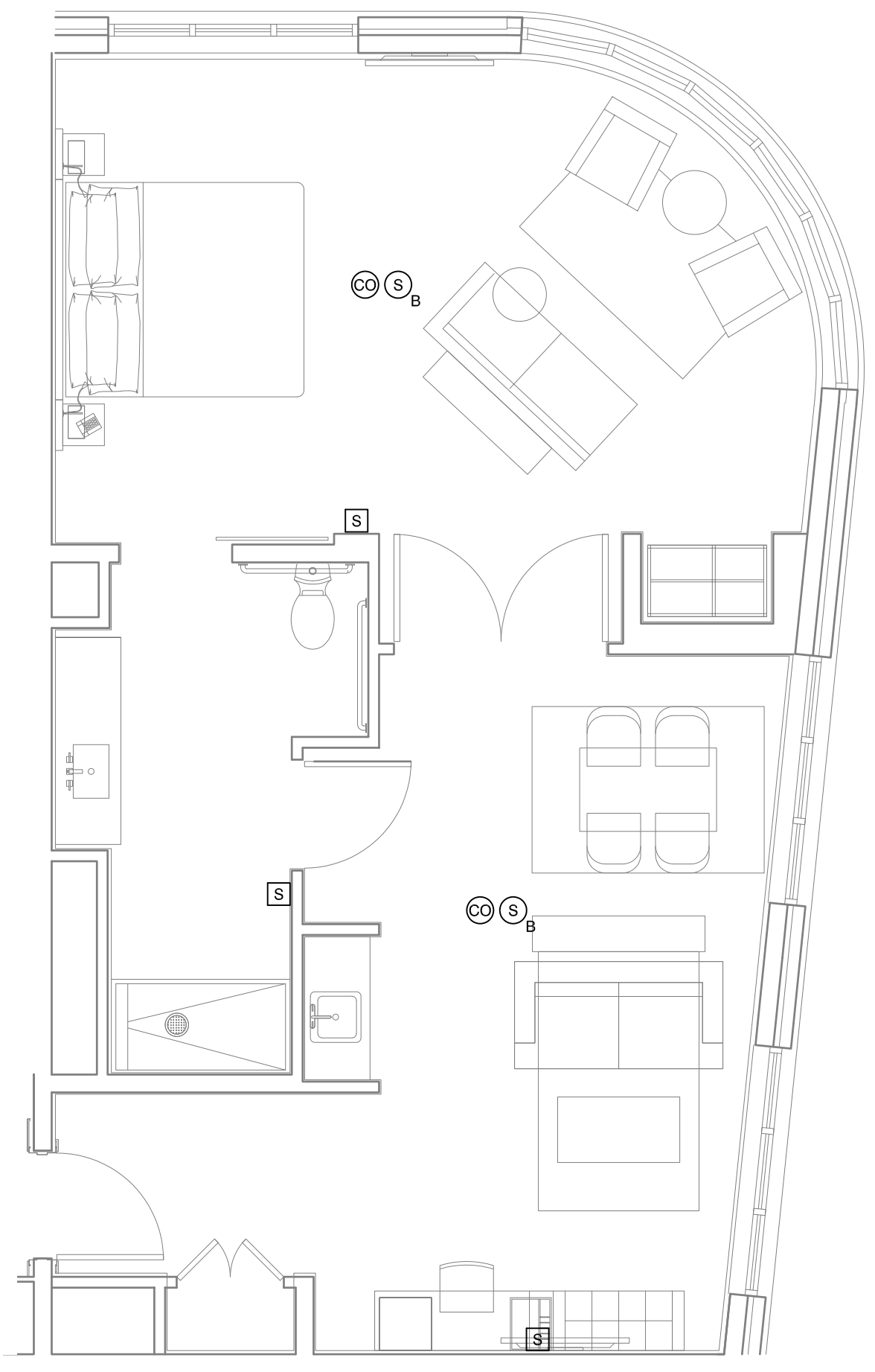
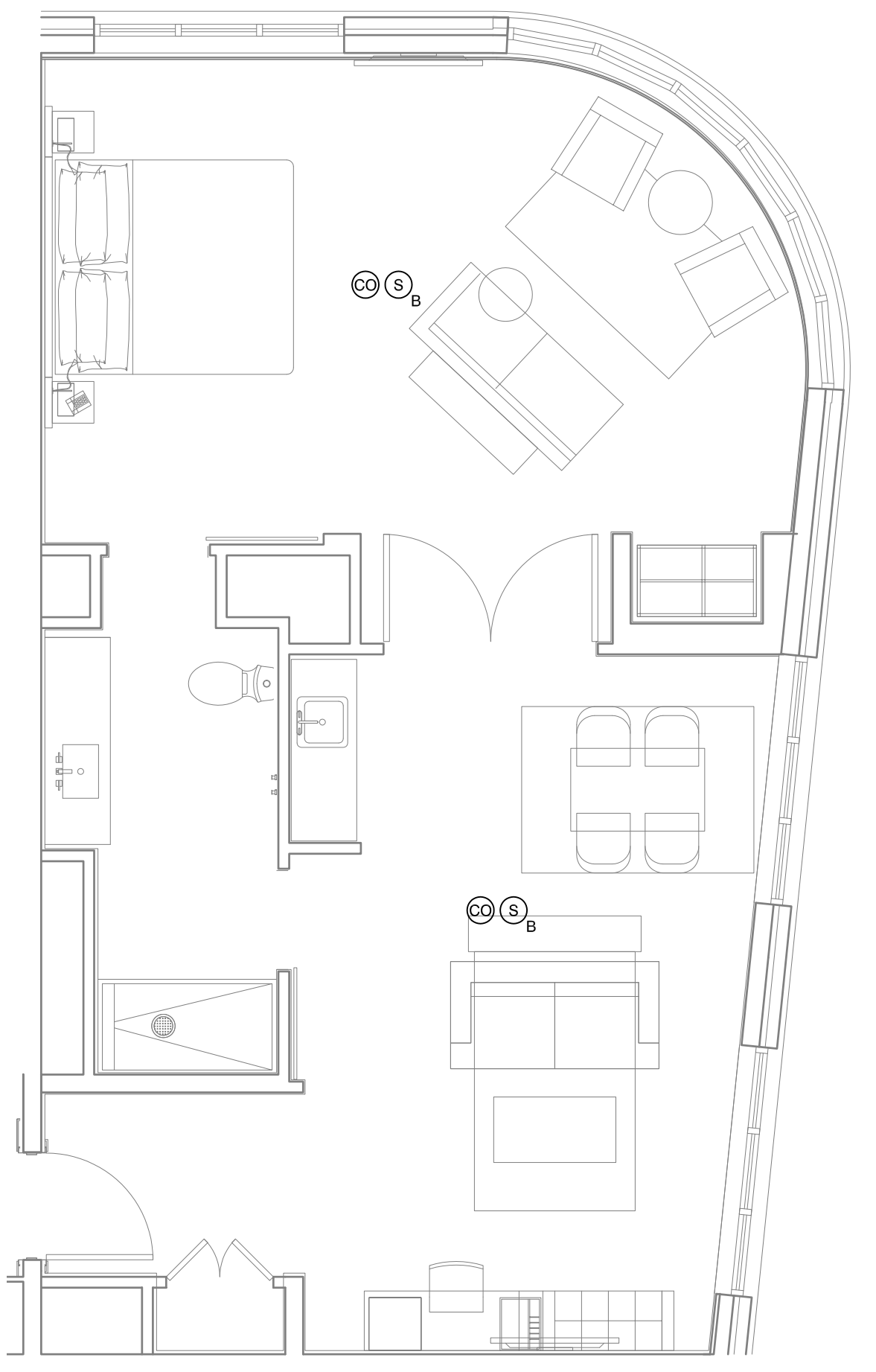


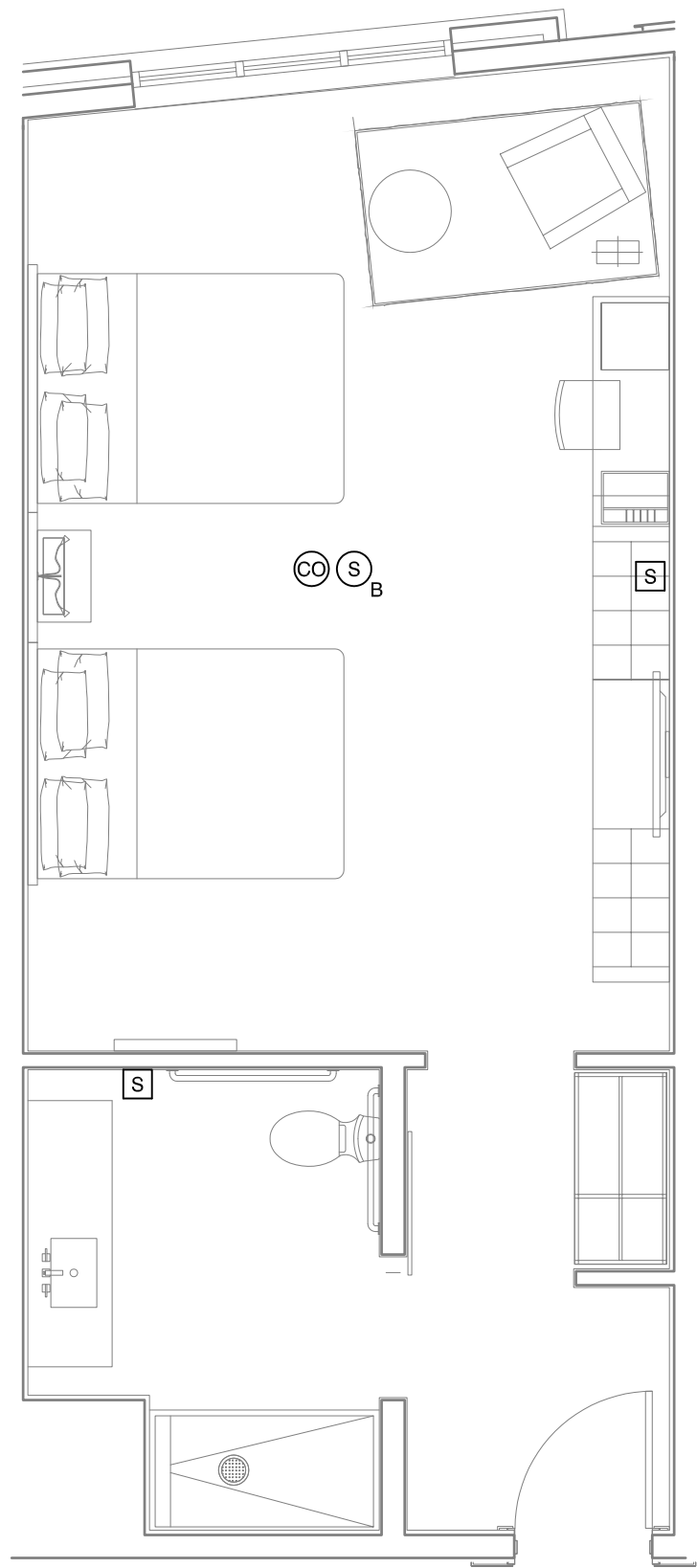
FIRE ALARM NOTES	FIRE ALARM LEGEND
1. HEARING IMPAIRED ROOMS SHALL BE EQUIPPED WITH ACCESSIBLE DEVICES SUCH AS, BUT NOT LIMITED TO THE FOLLOWING: FIRE ALARM STROBES, SMOKE DETECTOR STROBES, CARBON MONOXIDE STROBES, DOOR LIGHT/BUZZERS AND TELEPHONES WITH VOLUME CONTROLS COMPATIBLE WITH THE PHONE SYSTEM.	SYMBOL DESCRIPTION
2. DEVICE COLORS TO BE WHITE WHERE PERMITTED BY CODE.	 STROBE LIGHT
3. CONTRACTOR HAS OPTION OF COMBINING FIRE SAFETY DEVICES WITHIN THE SAME DEVICE	 CARBON MONOXIDE DETECTOR
4. CONTRACTOR SHALL COORDINATE CEILING DEVICES WITH FLOOR JOIST AND ADJUST LOCATIONS +/- 6 INCHES.	 SMOKE DETECTOR WITH SOUNDER BASE
5. PROVIDE VISIBLE NOTIFICATION IN HEARING IMPAIRED ROOMS AS DESIGNATED IN THE ACCESSIBLE ROOM MATRIX. DO NOT ASSUME THAT ALL BARRIER-FREE ROOMS ARE HEARING IMPAIRED ROOMS. REFER TO SCHEDULE AND SPECIFIC ROOM NUMBERS.	NOTE: GUEST ROOM FIRE ALARM DEVICE LOCATIONS SHOWN ON PLANS ARE APPROXIMATE. DESIGN BUILD SUBCONTRACTOR TO LOCATE AS REQUIRED BY APPLICABLE CODE.



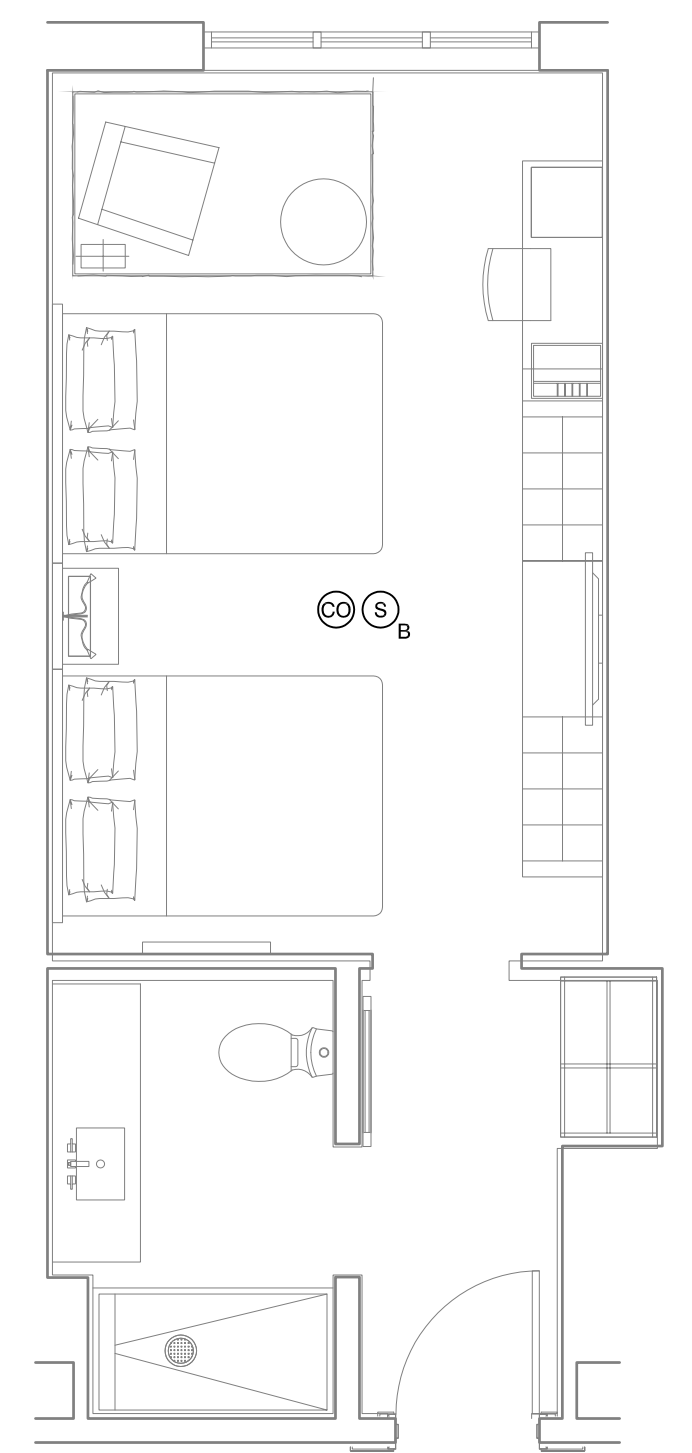
7 ACC - 1 BEDROOM FIRE ALARM PLAN
1/4" = 1'-0"



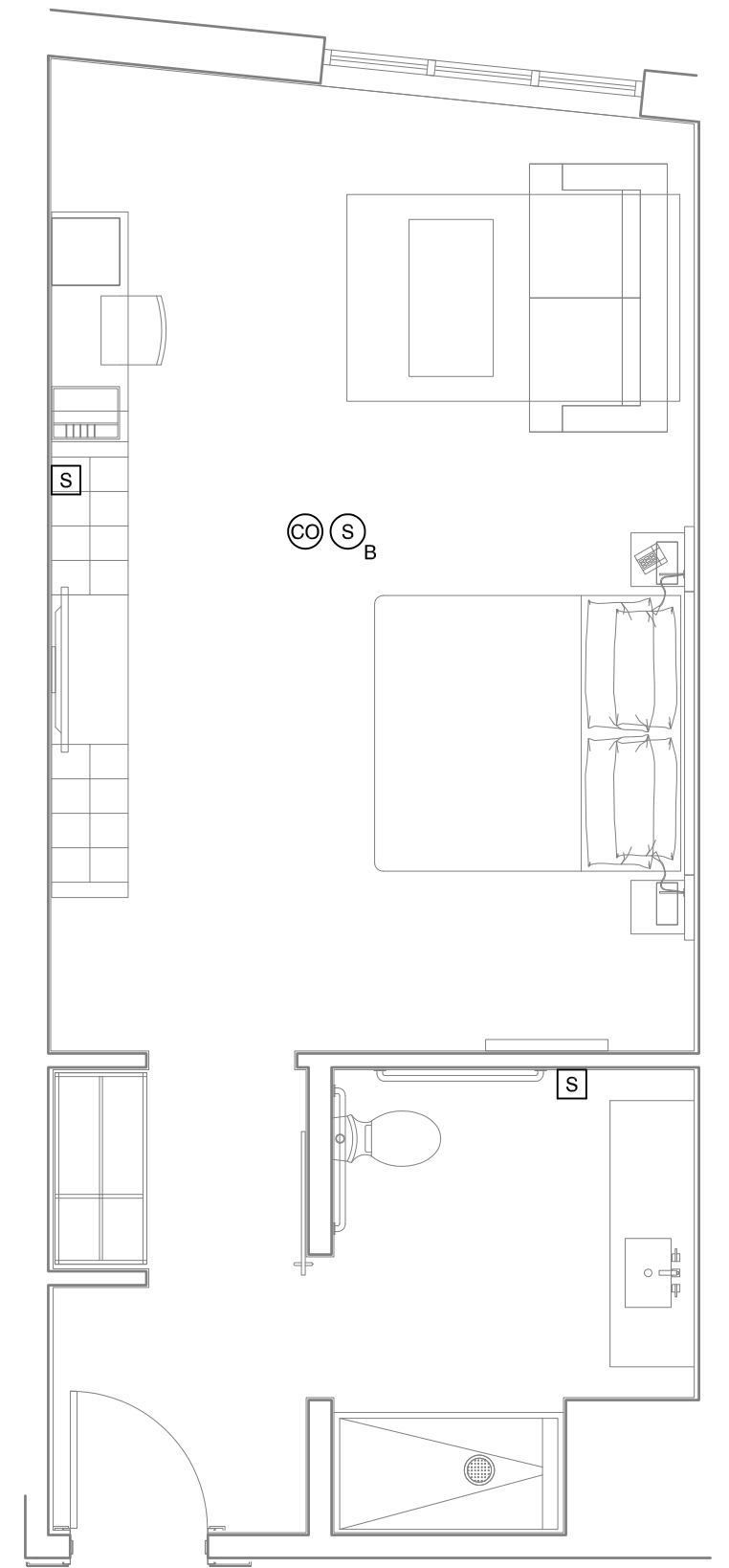
6 1 BEDROOM FIRE ALARM PLAN
1/4" = 1'-0"



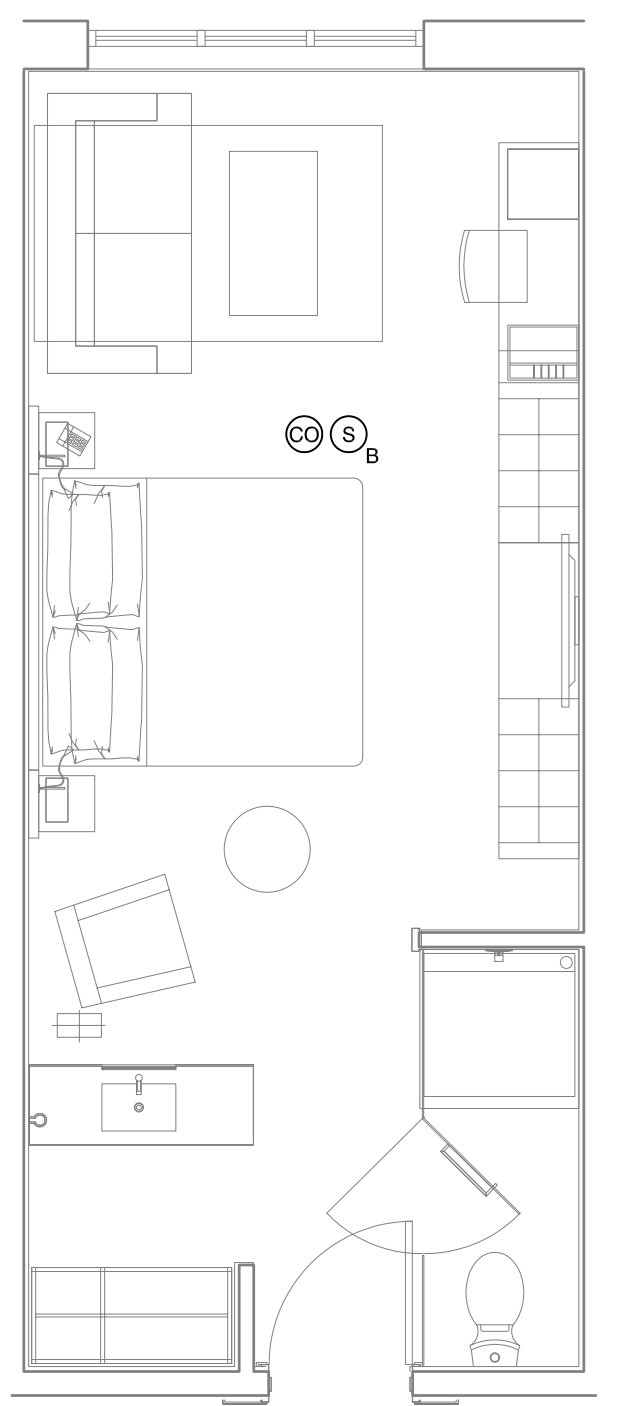
5 ACC - QUEEN QUEEN STUDIO FIRE ALARM PLAN
1/4" = 1'-0"



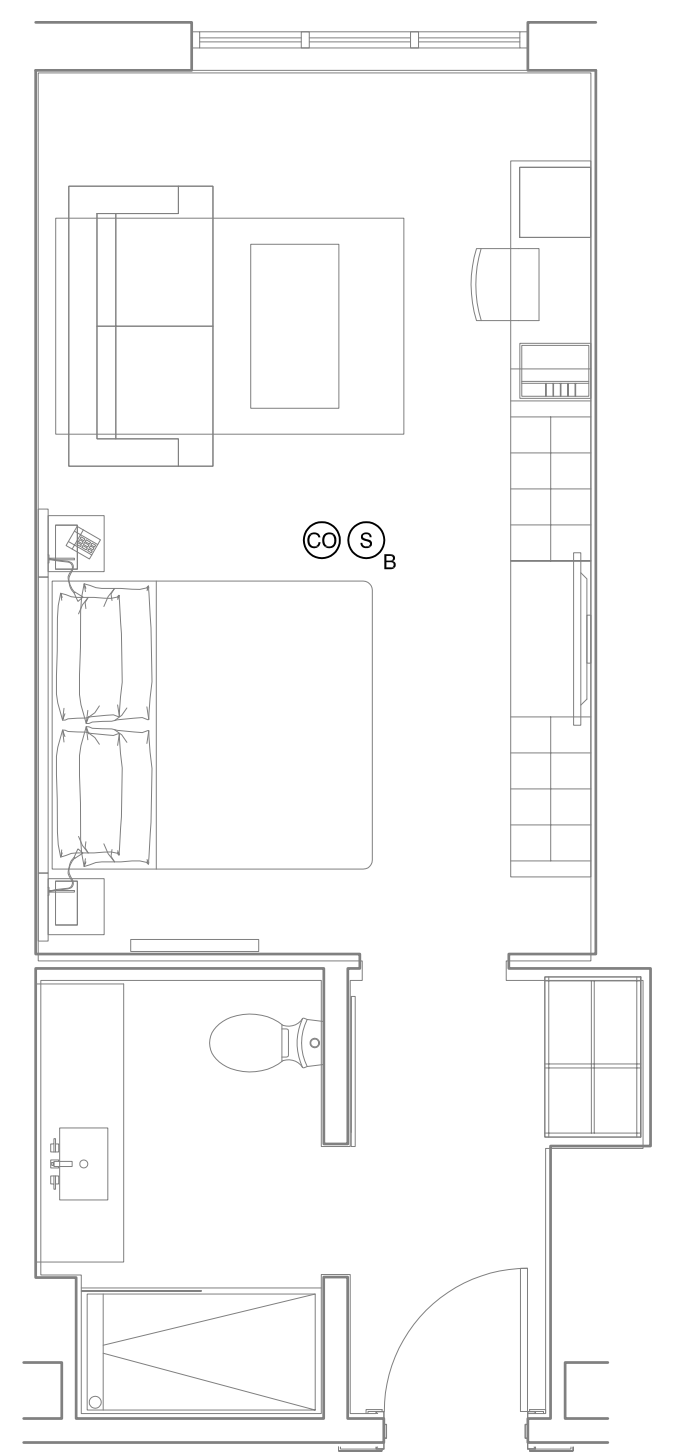
4 QUEEN QUEEN STUDIO FIRE ALARM PLAN
1/4" = 1'-0"



3 ACC - KING STUDIO FIRE ALARM PLAN
1/4" = 1'-0"



2 METRO KING STUDIO FIRE ALARM PLAN
1/4" = 1'-0"



1 KING STUDIO FIRE ALARM PLAN
1/4" = 1'-0"

REVISION:
.....

ISSUED:
12-13-16

project architect: **KAK**
drawn by: **DLS**

**GUEST ROOM
FIRE ALARM
PLANS**

sheet number:

FA2.01