

Copyright 2015, Opechee Construction Corporation  
Sunday, May 21, 2017 6:10:21 PM

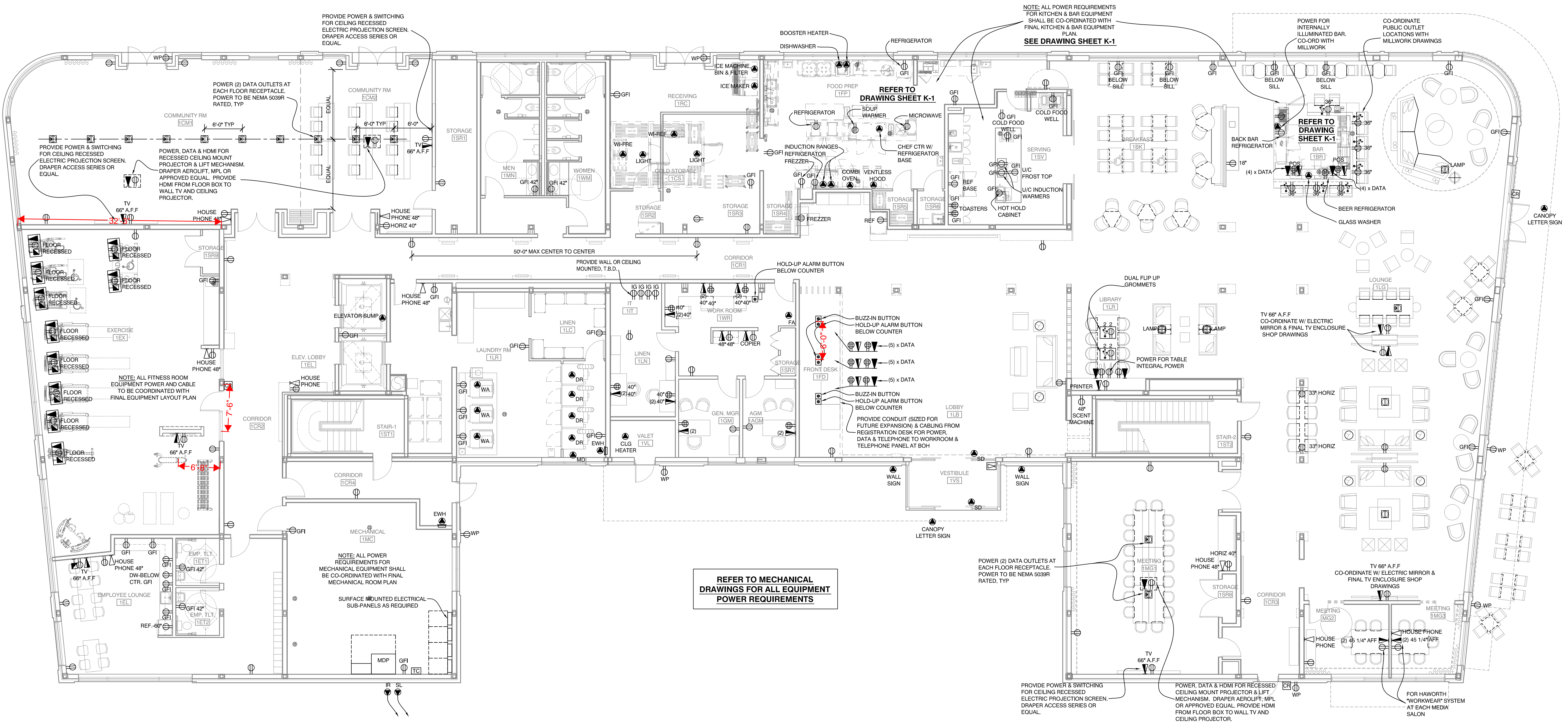
POWER NOTES	
1. THESE PLANS ARE PROVIDED AS A MEANS OF ESTABLISHING THE MINIMUM DESIGN CRITERIA FOR THE ELECTRICAL WORK. THE REFERENCED PLANS ARE SCHEMATIC IN NATURE AND ARE NOT TO BE RELIED UPON FOR CODE COMPLIANCE OR SUITABILITY OF PURPOSE. IT IS THE RESPONSIBILITY OF THE DESIGN-BUILD SUBCONTRACTOR, IN CONJUNCTION WITH THE DESIGN ENGINEER, TO ASSURE ALL WORK IS IN ACCORDANCE WITH APPLICABLE CODES, RULES, STATUTES, ORDINANCES AND GOOD ENGINEERING PRACTICES.	8. PROVIDE A 120/208V 3P ELECTRICAL ENTRANCE OF SUFFICIENT SIZE TO ACCOMMODATE ALL EQUIPMENT INDICATED.
2. SIGNIFICANT DESIGN ALTERATIONS, ADDITIONS, OR DISCREPANCIES SHALL BE BROUGHT TO THE ATTENTION OF THE DESIGN PROFESSIONAL BEFORE PROCEEDING.	9. 120/208V SUBPANEL TO BE INSTALLED IN UTILITY ROOMS AS INDICATED ON PLANS.
3. THE ELECTRICAL CONTRACTOR IS RESPONSIBLE FOR COORDINATING THE ELECTRICAL SYSTEM INSTALLATION WITH ALL TRADES INCLUDING MECHANICAL, ARCHITECTURAL, STRUCTURAL, AND PLUMBING.	10. AN ELECTRICAL FEEDER TO BE INSTALLED FOR AN EXTERIOR SIGN.
4. ELECTRICAL WORK SHALL CONFORM TO ALL LOCAL, STATE, AND FEDERAL STANDARDS, CODES, AND GUIDELINES.	11. ALL FIRE ALARM DEVICES TO BE CAT. 30 KEYED.
5. THE ELECTRICAL CONTRACTOR IS RESPONSIBLE FOR VERIFYING THAT SERVICE SIZE IS ADEQUATE.	12. ELECTRICAL CONTRACTOR IS RESPONSIBLE FOR SUPPLYING CONDUITS TO THE BUILDING FOR TELEPHONE FIBER OPTIC AND CABLE SERVICES, AS REQUIRED.
6. EACH ROOF TOP UNIT TO HAVE ONE 120V OUTLET.	13. ELECTRICAL CONTRACTOR IS TO PROVIDE FIXTURE SUBMITTALS AND CIRCULATED DRAWINGS, INCLUDING PANEL DIAGRAMS FOR APPROVAL PRIOR TO INSTALLATION.
7. RECEPTACLE MOUNTING HEIGHT 18" TO CENTER OF RECEPTACLE, UNLESS NOTED OTHERWISE (N.A.O.).	14. ELECTRICAL CONTRACTOR IS RESPONSIBLE FOR SUPPLYING ALL PRIMARY AND SECONDARY CONDUITS AND ALL SECONDARY WIRING AT TRANSFORMER LOCATION.
	15. MAXIMUM 8 DUPLEX OUTLETS PER 20 AMP. CIRCUIT. NO BACK TO BACK JUNCTION BOXES WILL BE ACCEPTED.
	16. SUPPLY POWER WIRING FOR MECHANICAL EQUIPMENT AS REQUIRED.
	17. ALL EXPOSED WIRING SYSTEMS TO BE RUN IN E.M.T. OR RIGID CONDUITS AND RUN TIGHT TO ROOF OR FLOOR DECK OR CONTINUOUSLY ALONG STRUCTURAL COMPONENTS.

POWER LEGEND	
⊕	DUPLEX RECEPTACLE (115V - 20 AMP)
⊕	DUPLEX RECEPTACLE - DROP IN CONDUIT (115V - 20 AMP)
⊕	DUPLEX RECEPTACLE WITH GROUND FAULT INTERRUPT (115V - 20 AMP)
⊕	DUPLEX RECEPTACLE - ISOLATED GROUND (120V - 20A - 3W) ORANGE IN COLOR
⊕	DUPLEX RECEPTACLE DEDICATED FOR WATER COOLER CONNECTION (115V - 20 AMP)
⊕	DUPLEX RECEPTACLE WITH GROUND FAULT INTERRUPT IN EXTERIOR WEATHERPROOF ENCLOSURE (115V - 20 AMP)
⊕	DUPLEX RECEPTACLE DEDICATED FOR REFRIGERATOR (115V - 20 AMP)
⊕	DUPLEX RECEPTACLE DEDICATED FOR FREEZER (115V - 20 AMP)
⊕	DUPLEX RECEPTACLE WITH GROUND FAULT INTERRUPT DEDICATED FOR GUEST LAUNDRY WASHING MACHINE MOUNTED 4" A.F.F. (115V - 20 AMP)
⊕	QUADRUPLEX RECEPTACLE (115V - 20 AMP)
⊕	USB OUTLET
⊕	DUPLEX FLOOR RECEPTACLE (115V - 20 AMP) RECESSED
⊕	DUPLEX FLOOR RECEPTACLE WITH DATA JACK (115V - 20 AMP) RECESSED
⊕	FLOOR MOUNTED JUNCTION BOX
⊕	SINGLE SPECIAL PURPOSE CONNECTION (VERIFY VOLTAGE AND AMP WITH EQUIPMENT CUT-SHEET)

POWER LEGEND	
⊕	ROOF MOUNTED EXHAUST FAN CONNECTION
⊕	INLINE EXHAUST FAN CONNECTION
⊕	FIRE ALARM PANEL CONNECTION
⊕	FLAG POLE LIGHT FEED
⊕	IRRIGATION SYSTEM CONNECTION
⊕	ROOF TOP UNIT CONNECTION
⊕	SITE SIGN LIGHT CONNECTION (REFER TO SITE PLAN FOR LOCATION)
⊕	SITE LIGHTING CONNECTION (REFER TO SITE PLAN FOR QUANTITY AND LOCATIONS)
⊕	UNIT HEATER CONNECTION
⊕	ELECTRIC WALL HEATER CONNECTION (EWH PROVIDED BY ELECTRIC SUBCONTRACTOR)
⊕	WATER HEATER CONNECTION
⊕	GUEST LAUNDRY DRYER CONNECTION
⊕	COMMERCIAL DRYER CONNECTION
⊕	COMMERCIAL WASHER CONNECTION
⊕	WATERCOOLER
⊕	CEILING RECESSED HEATING PANELS-SEE MECH. DWGS. FOR POWER REQUIRED.
⊕	SLIDING DOOR CONNECTION
⊕	CEILING SPEAKER FOR P.A. SYSTEM

TELEPHONE & DATA LEGEND	
⊕	CABLE JACK
⊕	COMBINATION DATA AND PHONE JACK
⊕	DATA JACK
⊕	PHONE JACK
⊕	DOORBELL LIGHT
⊕	TELEPHONE LIGHT
⊕	PUSH BUTTON SWITCH
⊕	INTERCOM STATION
⊕	CARD READER

TELEPHONE & DATA LEGEND	
⊕	CABLE JACK
⊕	COMBINATION DATA AND PHONE JACK
⊕	DATA JACK
⊕	PHONE JACK
⊕	DOORBELL LIGHT
⊕	TELEPHONE LIGHT
⊕	PUSH BUTTON SWITCH
⊕	INTERCOM STATION
⊕	CARD READER



**AC HOTELS by MARRIOTT**  
 Fore Street / Hancock Street / Thames Street  
 Portland, Maine

REVISION: 05-19-17 COMMUNITY RM FLOOR OUTLETS

ISSUED: 12-13-16  
 project architect: KAK  
 drawn by: DLS

**FIRST LEVEL POWER PLAN**  
 sheet number: **E1.01**