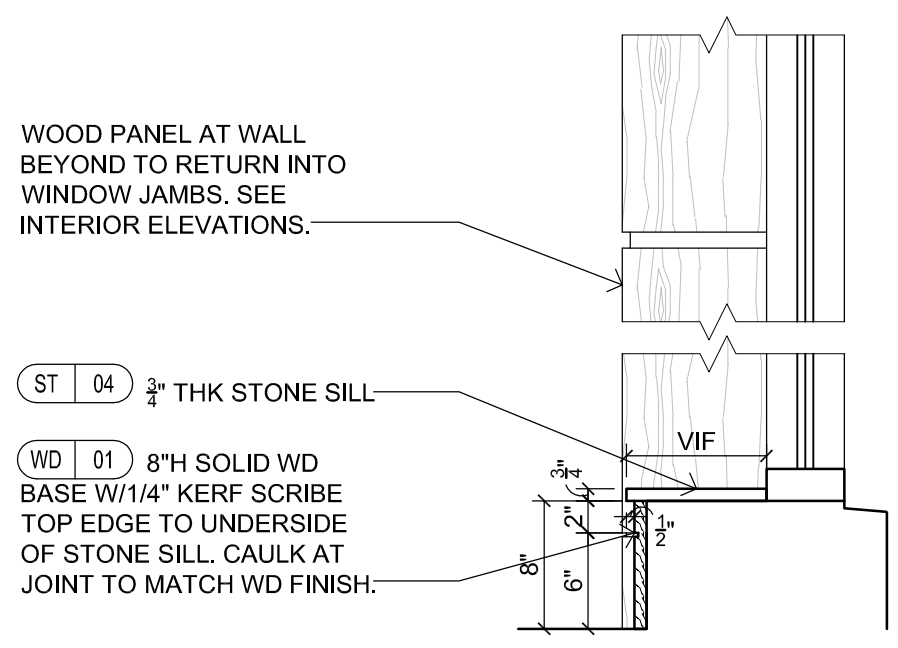
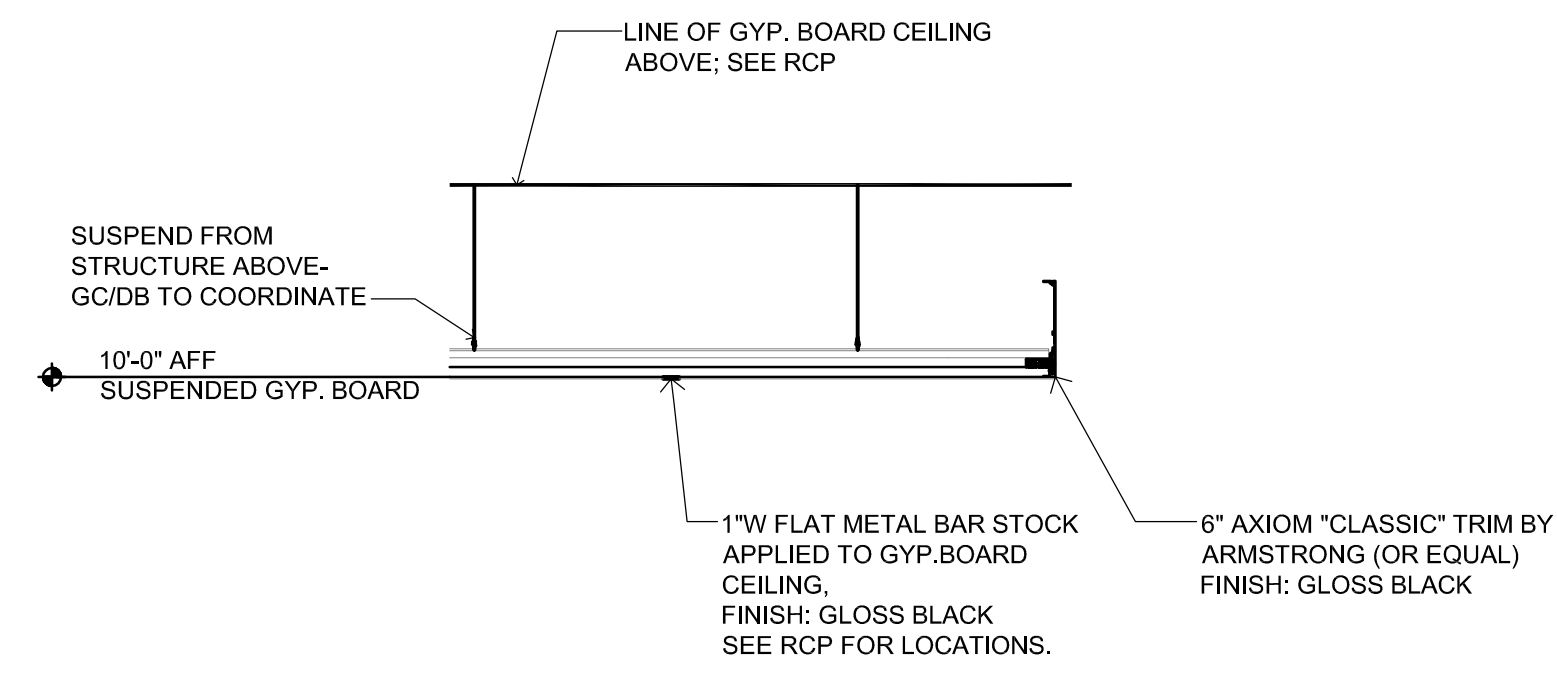


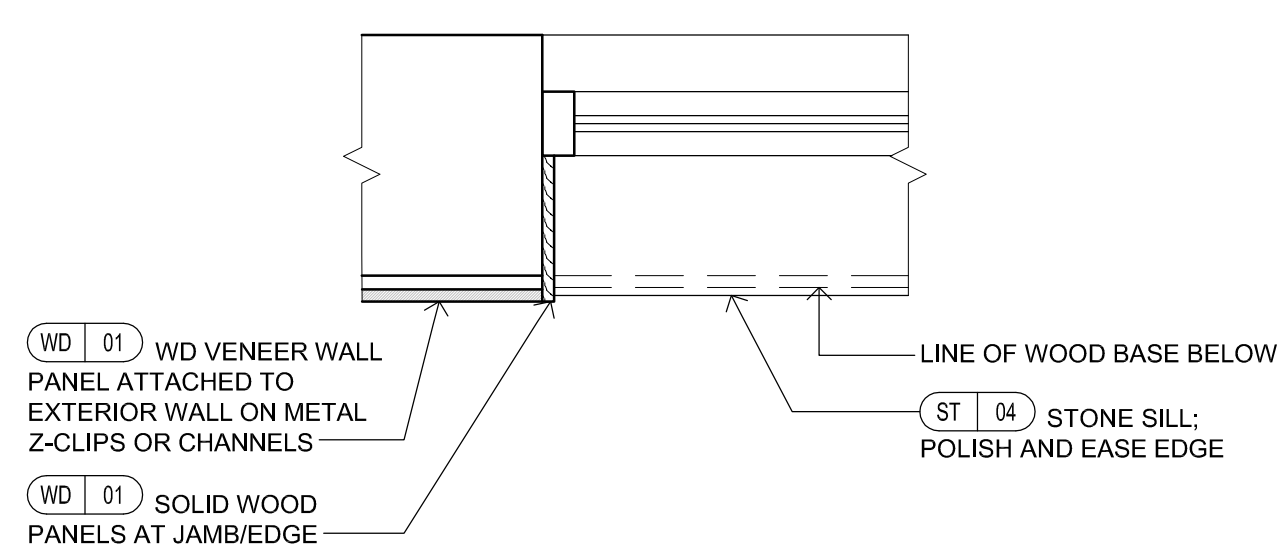
1 DRAPERY POCKET DETAIL  
SCALE: 1"= 1'-0"



3 SILL @ DINING/BAR/LOUNGE  
SCALE: 1"= 1'-0"

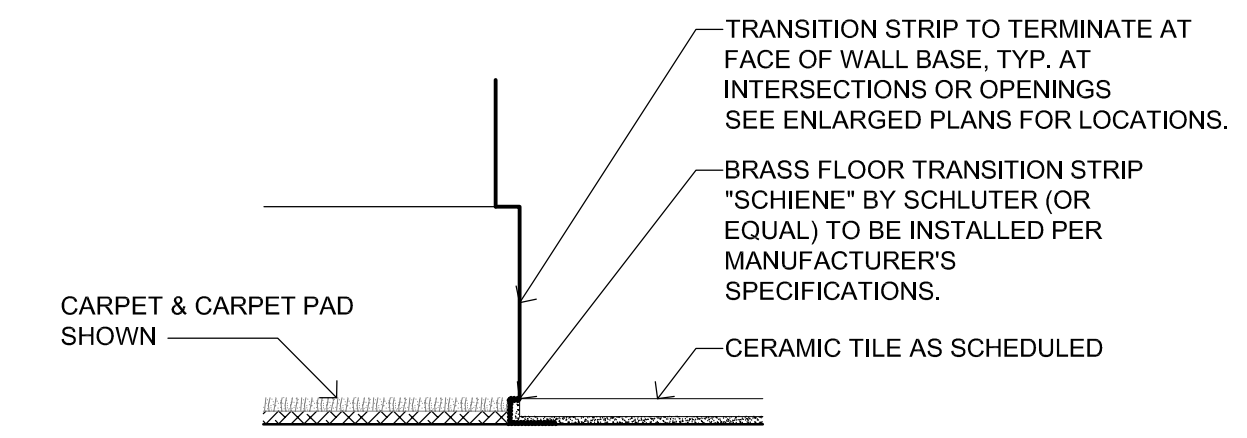


2 MEETING RM- CEILING DETAIL  
SCALE: 1"= 1'-0"

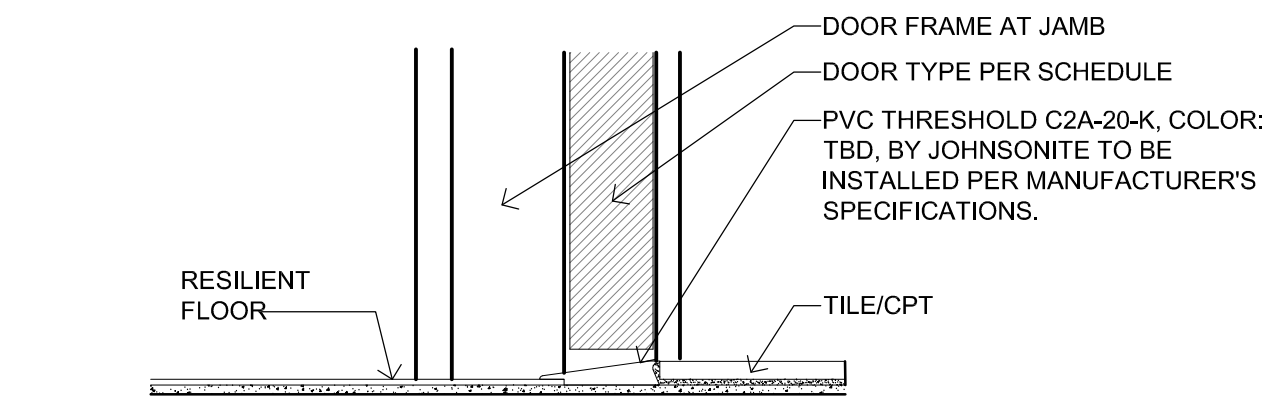


4 SILL @ DINING/BAR/LOUNGE  
SCALE: 1"= 1'-0"

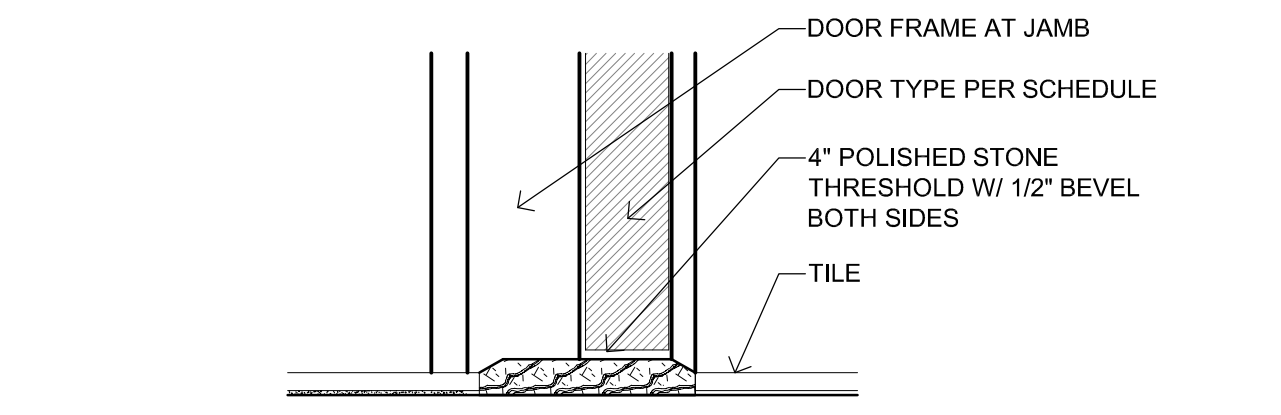
- GENERAL MILLWORK NOTES:**
- MILLWORK DETAILS ARE SHOWN FOR DESIGN INTENT ONLY. FABRICATOR SHALL BE RESPONSIBLE FOR CONSTRUCTION DETAILS AND ATTACHMENT TO WORK BY OTHERS.
  - G.C. TO COORDINATE SCOPE OF ALL TRADES INCLUDING BUT NOT LIMITED TO MEP, STRUCTURAL SUPPORT, AND SUBSTRATE CONDITIONS.
  - G.C. TO COORDINATE WITH OWNER PROVIDED EQUIPMENT AND SUBMIT CUT SHEET TO FABRICATOR PRIOR TO FABRICATION FOR DIMENSIONS, POWER, AND DATA REQUIREMENTS.
  - G.C. TO ENSURE ALL MILLWORK NOT BUILT IN ON THREE SIDES TO BE CONSTRUCTED TO BE ABLE TO SUPPORT 250LBS MINIMUM IN ALL DIRECTIONS.
  - WOOD VENEER MILLWORK TO HAVE SOLID WOOD EDGE BANDING.
  - REFER TO FINISH SCHEDULES AND SPECIFICATIONS FOR ALL FINISHES AND FF&E.
  - G.C. TO SUBMIT SHOP DRAWINGS FOR REVIEW.



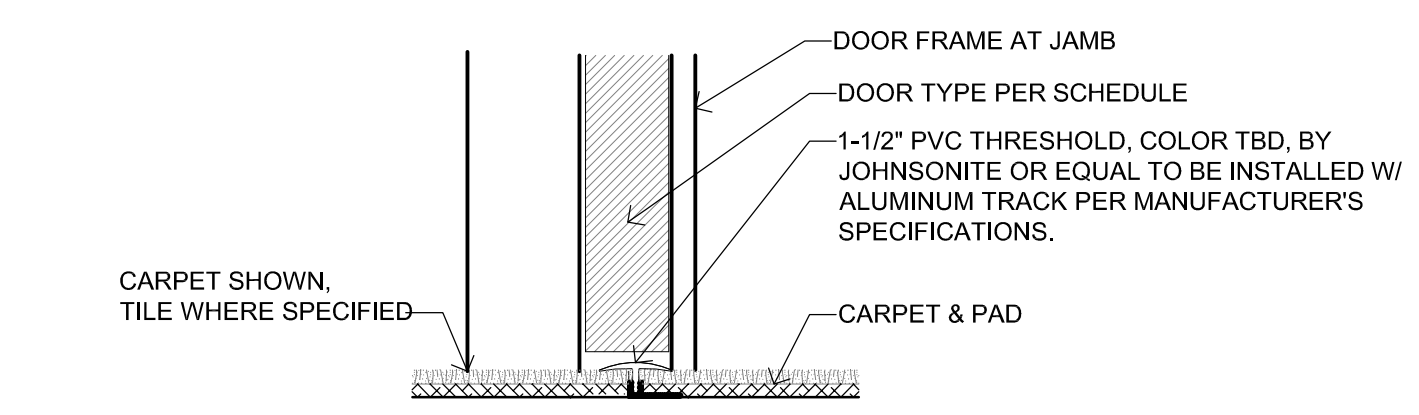
5 CPT/TILE TO TILE TRANSITION  
SCALE: 3"= 1'-0"



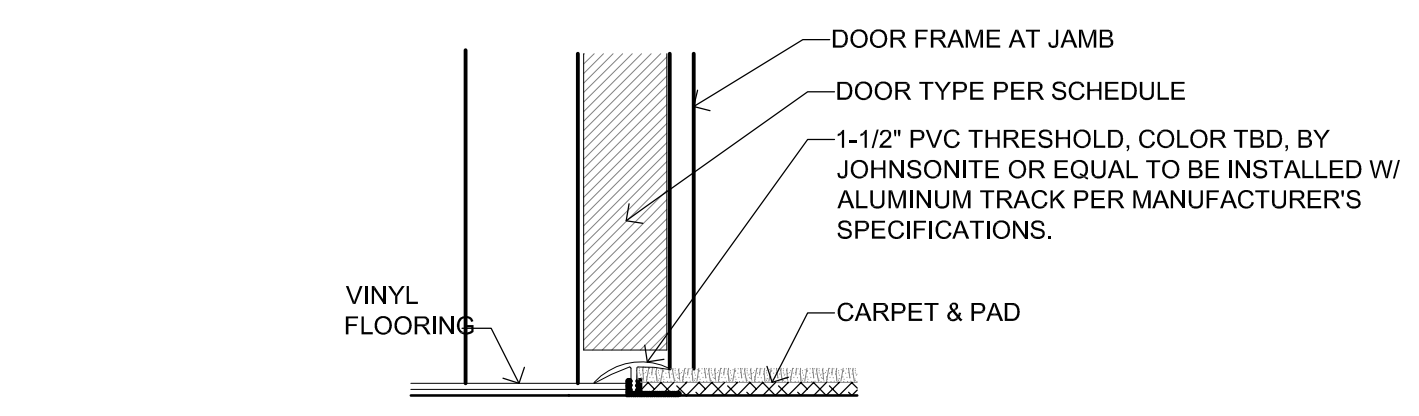
6 CPT/TILE TO RESILIENT THRESHOLD  
SCALE: 3"= 1'-0"



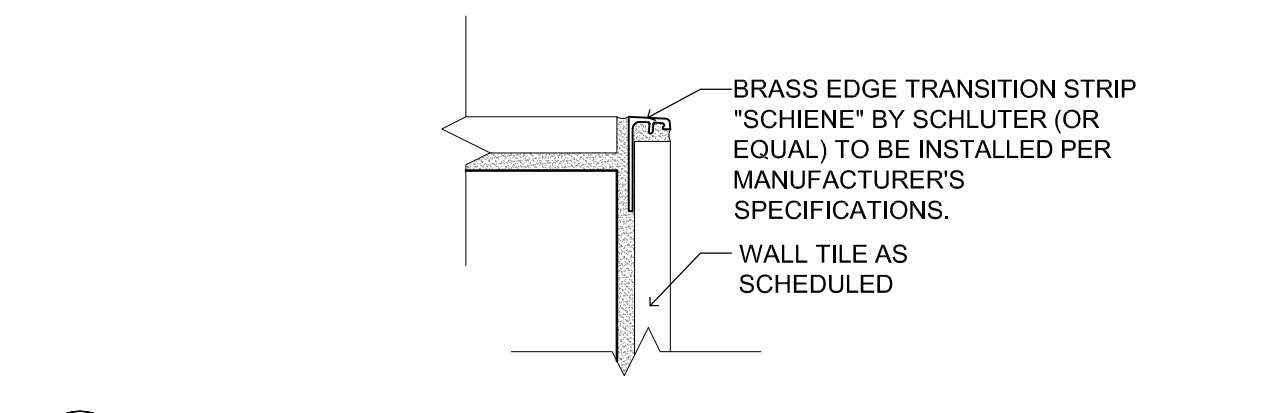
7 STONE SADDLE THRESHOLD  
SCALE: 3"= 1'-0"



8 CPT/TILE TO CARPET THRESHOLD  
SCALE: 3"= 1'-0"



9 VINYL/CPT THRESHOLD (TRANSITION)  
SCALE: 3"= 1'-0"



10 WALL TILE FINISH STRIP @ CORNER  
SCALE: 6"= 1'-0" FINISHING AT TOP EDGE, SIM.