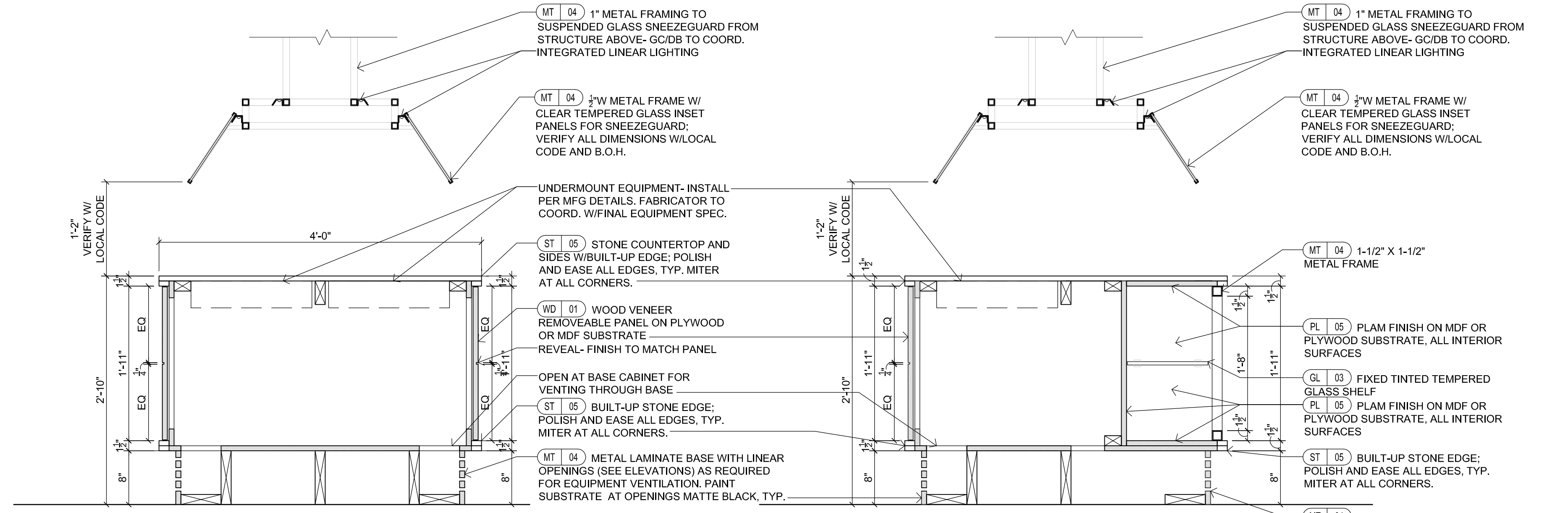


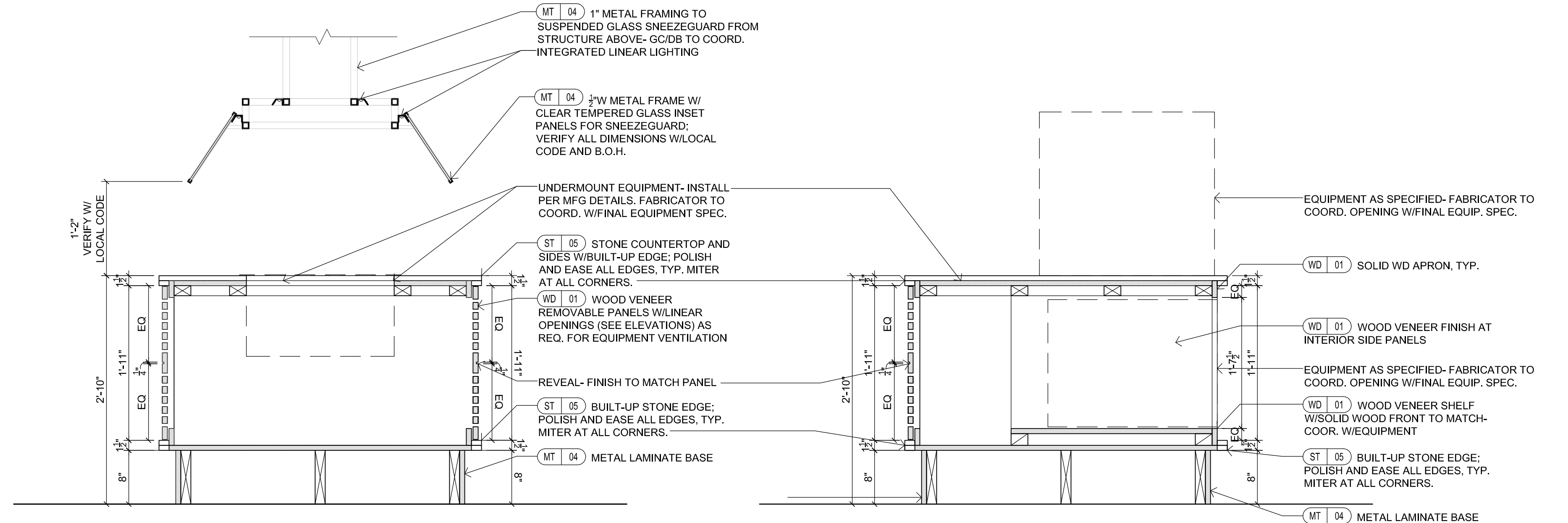
- GENERAL MILLWORK NOTES:**
- MILLWORK DETAILS ARE SHOWN FOR DESIGN INTENT ONLY. FABRICATOR SHALL BE RESPONSIBLE FOR CONSTRUCTION DETAILS AND ATTACHMENT TO WORK BY OTHERS.
  - G.C. TO COORDINATE SCOPE OF ALL TRADES INCLUDING BUT NOT LIMITED TO MEP, STRUCTURAL SUPPORT, AND SUBSTRATE CONDITIONS.
  - G.C. TO COORDINATE WITH OWNER PROVIDED EQUIPMENT AND SUBMIT CUT SHEET TO FABRICATOR PRIOR TO FABRICATION FOR DIMENSIONS, POWER, AND DATA REQUIREMENTS.
  - G.C. TO ENSURE ALL MILLWORK NOT BUILT IN ON THREE SIDES TO BE CONSTRUCTED TO BE ABLE TO SUPPORT 250LBS MINIMUM IN ALL DIRECTIONS.
  - WOOD VENEER MILLWORK TO HAVE SOLID WOOD EDGE BANDING.
  - REFER TO FINISH SCHEDULES AND SPECIFICATIONS FOR ALL FINISHES AND FF&E.
  - G.C. TO SUBMIT SHOP DRAWINGS FOR REVIEW.

- BREAKFAST BUFFET & CONDIMENT COUNTER**
- HARDWARE AND ELECTRICAL NOTES:**
- ALL HARDWARE TO BE HEAVY-DUTY FOR COMMERCIAL USE
  - PROVIDE SOFT CLOSE CONCEALED HINGES AND DRAWER GLIDES, TYP.
  - ALL INTERIOR CABINET HARDWARE SHALL BE MATTE BLACK FINISH
  - ALL ELECTRICAL DEVICES WITHIN MILLWORK TO BE BLACK W/BLACK COVERPLATES
  - ALL ELECTRICAL DEVICES ABOVE COUNTER AT WALL TILE TL-08 TO BE BLACK W/SATIN BRASS COVERPLATES
  - PROVIDE CONCEALED PUSH CLIP HARDWARE (EQUAL TO KEKU CLIP SYSTEM BY HAFELLE OR SIM.) AT ALL REMOVABLE PANELS TO ACCESS EQUIPMENT BELOW, TYP.
- DECORATIVE CABINET PULLS:**  
6" BAR PULL BY RICHELIEU #BP205596900  
FINISH: MATTE BLACK
- 8" SQUARE TRASH GROMMET**  
TM2CSQ BY MCKEYTT  
FINISH: POLISHED SS



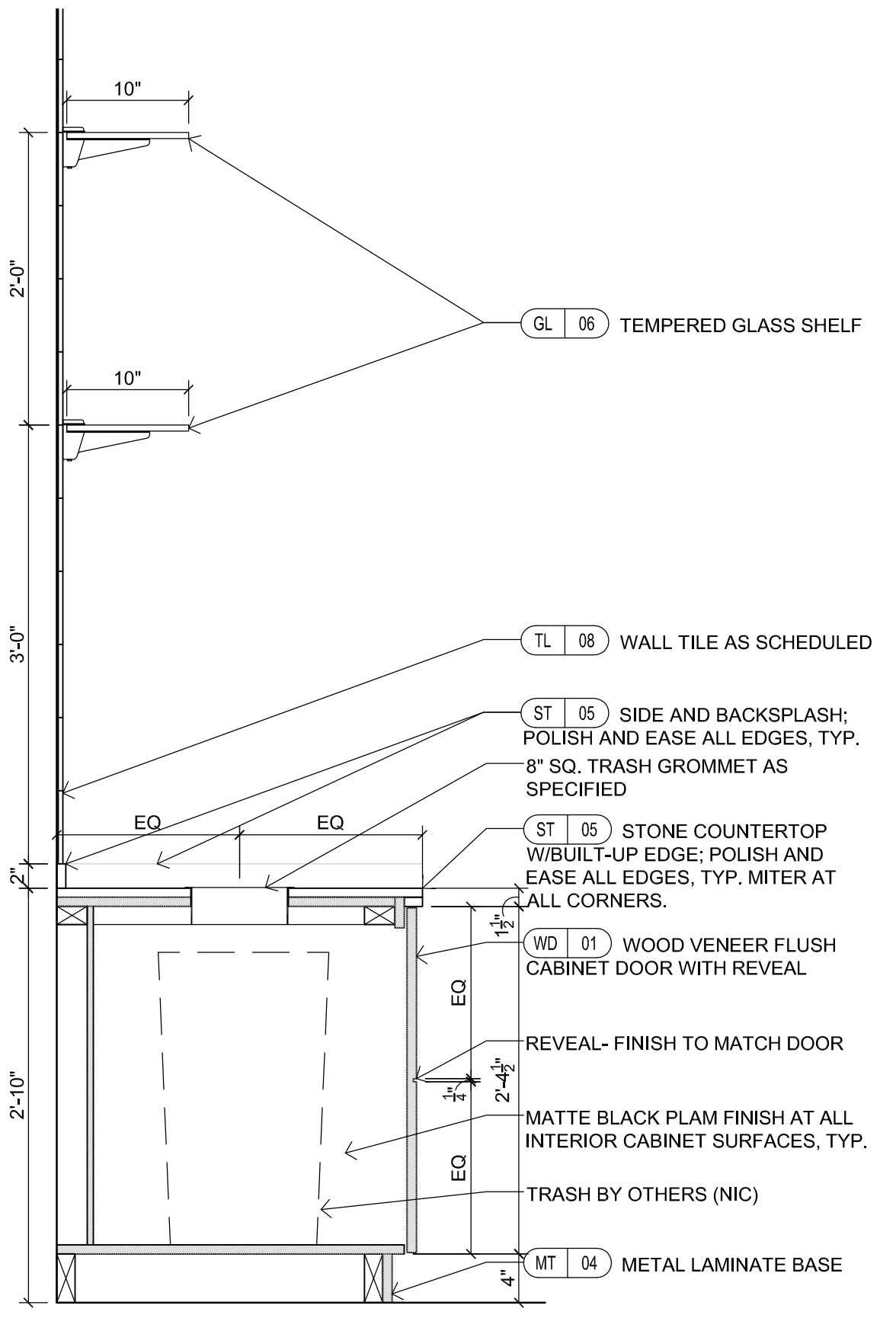
**1 CONDIMENT COUNTER- SECTION**  
SCALE: 1"= 1'-0"

**2 CONDIMENT COUNTER- SECTION**  
SCALE: 1"= 1'-0"

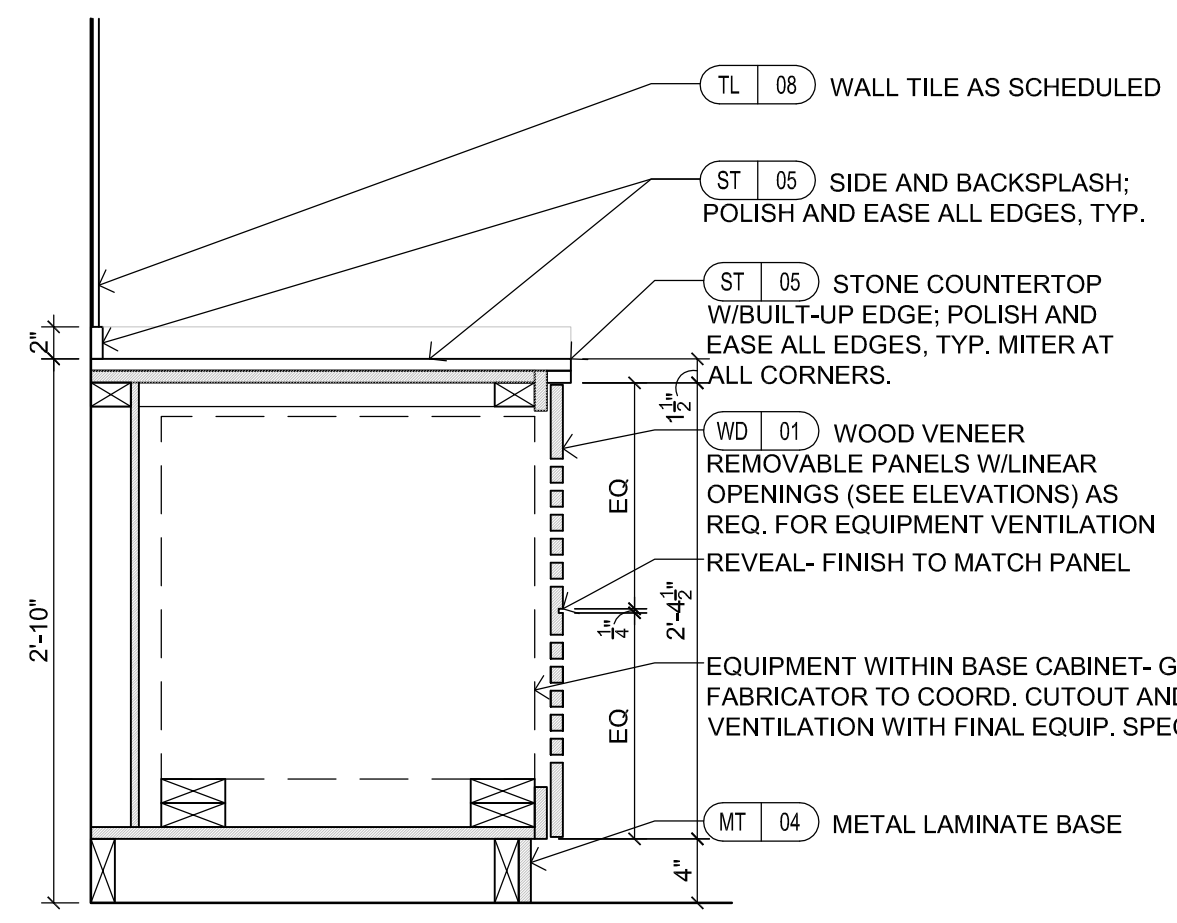


**3 CONDIMENT COUNTER- SECTION**  
SCALE: 1"= 1'-0"

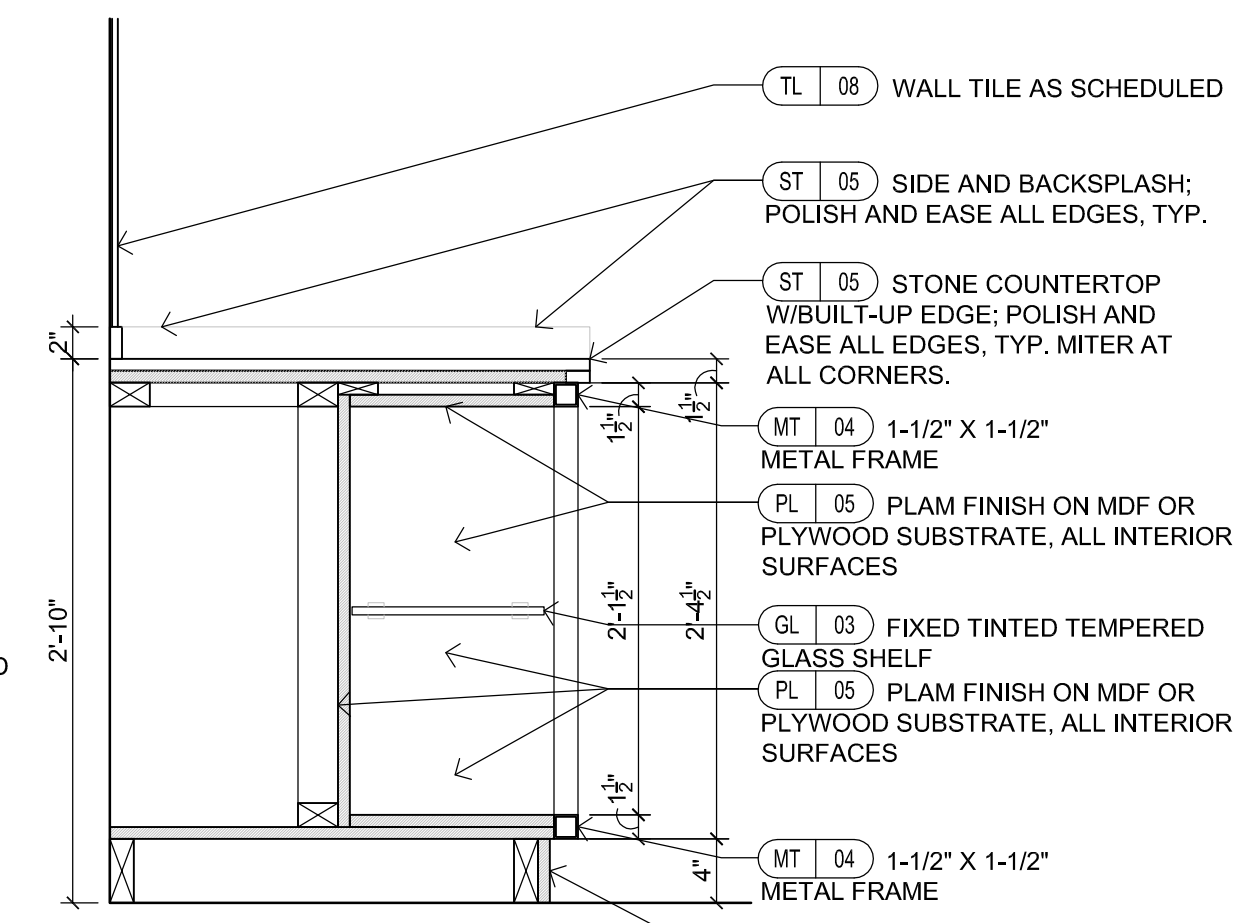
**4 CONDIMENT COUNTER- SECTION**  
SCALE: 1"= 1'-0"



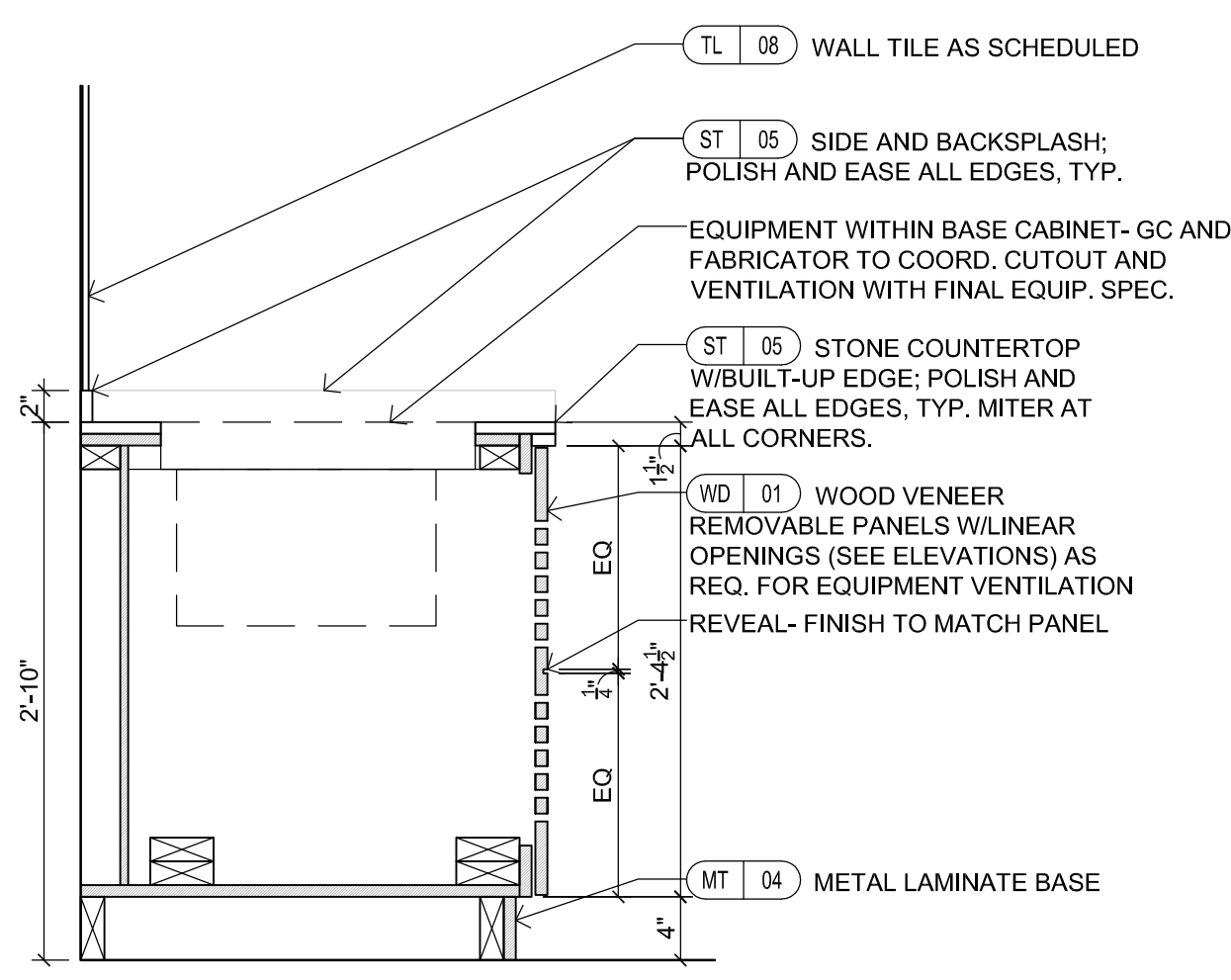
**5 BREAKFAST BUFFET COUNTER- SECTION**  
SCALE: 1"= 1'-0"



**6 BREAKFAST BUFFET COUNTER- SECTION**  
SCALE: 1"= 1'-0"



**7 BREAKFAST BUFFET COUNTER- SECTION**  
SCALE: 1"= 1'-0"



**8 BREAKFAST BUFFET COUNTER- SECTION**  
SCALE: 1"= 1'-0"