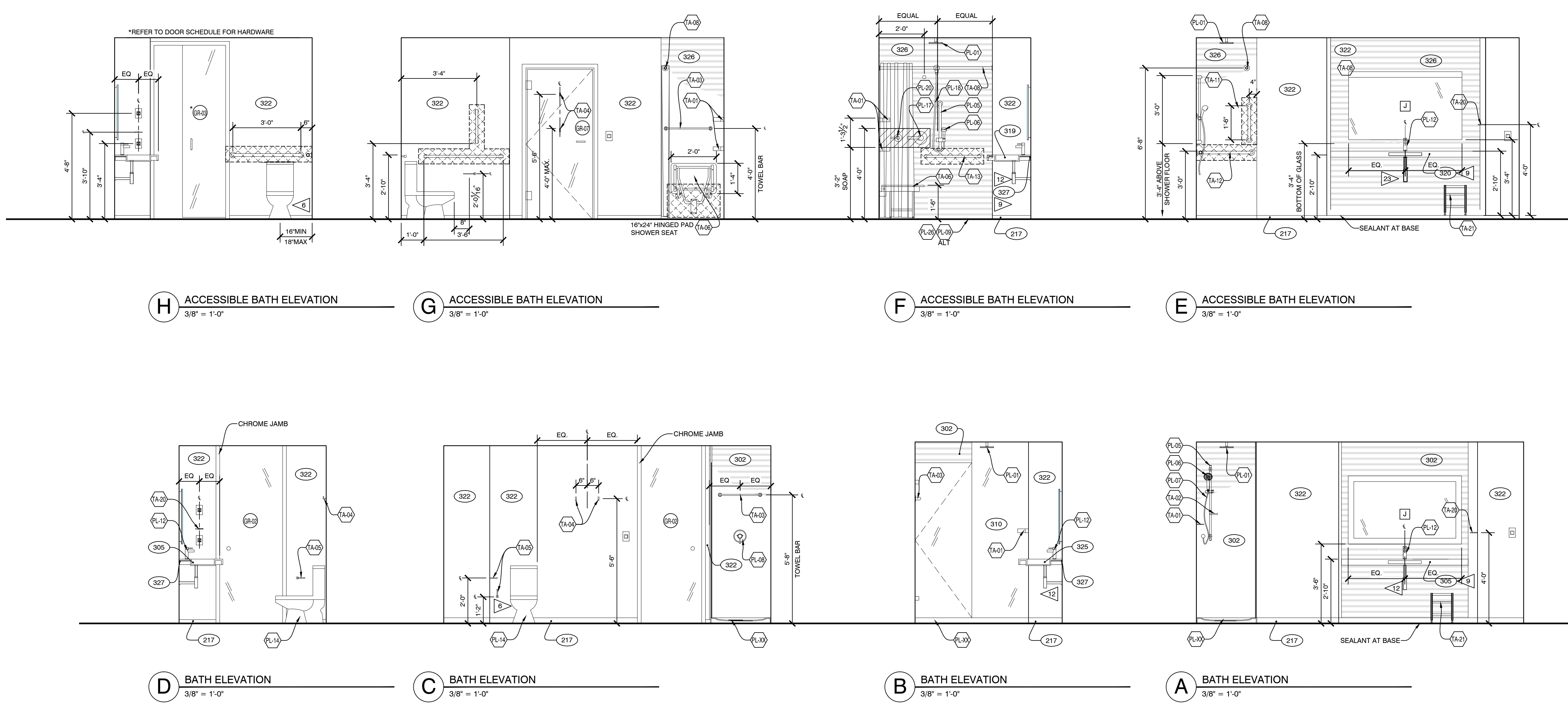


SYMBOL LEGEND	
(XX)	DOOR TAG -REFER TO SHEET A6.04
(XXX)	FINISH TAG
(XX)	ACCESSORY TAG
XX	WALL TAG -REFER TO SHEET LS2.01 & LS2.02
X-000	FURNISHING REFERENCE - REFER TO INTERIOR DESIGN SPECIFICATIONS
XX-00	M.E.P. COMPONENT REFERENCE - REFER TO IPFS
J	JUNCTION, PULL OR TAP BOX, CEILING, WALL OR FLOOR MOUNTED
□	TELEPHONE OUTLET
⬇	DATA JACK
⬆	TV OUTLET, FLUSH MOUNTED.
⬆	DUPLEX RECEPTACLE, 20A 125V .3W., WALL MOUNTED NEMA 5-20R.
⬆	RECESSED CEILING LIGHTS.
⬆	USB OUTLET
⬆	MOTION SENSOR
⊙	THERMOSTAT
REFERENCE NOTES	
<ol style="list-style-type: none"> <li>REFER TO INTERIOR PRODUCT AND FINISH SPECIFICATIONS.</li> <li>ELECTRICAL OUTLETS SHOWN ON ELECTRICAL/MECH PLAN AND ON ELEVATIONS ARE FOR DEVICES AND FIXTURES SPECIFIED. ADDITIONAL OUTLETS MAY BE REQUIRED BY LOCAL BUILDING CODES.</li> <li>ELECTRICAL OUTLETS ARE MOUNTED AT STANDARD HEIGHT OF 18" UNLESS NOTED OTHERWISE.</li> <li>SWITCHES AND THERMOSTATS TO BE LOCATED AT 48" CENTERLINE AFF UNLESS NOTED OTHERWISE.</li> <li>REFER TO GUESTROOM ELEVATIONS FOR MOUNTING CONFIGURATIONS OF OUTLETS. COORDINATE FINAL LOCATIONS WITH CASEGOODS.</li> <li>SOME PRODUCTS, FIXTURES AND FURNITURE ITEMS ARE HANDED (LEFT OR RIGHT). DESIGNER TO COORDINATE, WHERE APPLICABLE.</li> <li>ALL DIMENSIONS ARE FROM FACE OF STUD TO FACE OF STUD, U.N.O. HOLD ALL CLEAR INTERIOR ROOM DIMENSIONS.</li> <li>WATER CLOSET WASTE LINES ARE TO BE LOCATED IN WALL CHASE, NOT IN EXTERIOR WALLS.</li> </ol>	
CRITERIA NOTES	
<ol style="list-style-type: none"> <li>PROVIDE CONTINUOUS SOLID WOOD BLOCKING IN CEILING FOR DRAPERY ATTACHMENT AND SLIDING DOOR TRACKS.</li> <li>COORDINATE PARTITION DIMENSIONS WITH HVAC EQUIPMENT &amp; CONFIGURATION.</li> <li>PROVIDE METAL TRIM TRANSITION (318) AT ALL OUTSIDE CORNERS OF BATHROOM.</li> <li>IRONING BOARD MOUNT (319) &amp; IRON RACK MOUNT (328) TO BE COORDINATED WITH CLOSET INSERT.</li> <li>PROVIDE ACCENT VINYL (322).</li> <li>SUPPLY VALVE FOR WATER CLOSET SHALL BE LOCATED OPPOSITE ENTRY.</li> <li>COORDINATION BY HEADBOARD INSTALLER &amp; ELECTRICIAN WILL BE REQUIRED AND MAY REQUIRE NUMEROUS VISITS BY BOTH TRADES.</li> <li>WALL OUTLETS SHALL NOT OCCUR IN SAME WALL CAVITY OF ADJACENT GUESTROOMS. SEE DETAIL AT OFFSET OUTLET LOCATIONS ON E2.01.</li> <li>PROVIDE BLOCKING FOR ACCESSORIES, EQUIPMENT, AND FF&amp;E AS REQUIRED.</li> <li>MASTER SWITCH WITH SIGNAGE TO CONTROL HARDWIRED LIGHTS AND SWITCHED OUTLETS IN GUESTROOM, WITH EXCEPTION OF BATHROOM. WIRE AHEAD OF INDIVIDUAL SWITCHES. SEE E2.02 FOR DETAIL.</li> <li>AT HEARING IMPAIRED ROOM ONLY.</li> <li>PROVIDE CHROME TRAP AND WASTE LINE. LOCATE SUPPLY VALVES AS HIGH AS POSSIBLE BELOW VANITY. PROVIDE A CABLE MANAGEMENT SYSTEM TO CONTAIN THE SST SUPPLY LINES.</li> <li>NOT USED</li> <li>PAINT EXTERIOR WINDOW WALL (309) WITH MOLD AND MILDEW RESISTANT TEXTURED FINISH.</li> <li>SIZE AND LOCATION OF EXTERIOR WINDOW TO BE ACCEPTED BY MARRIOTT.</li> <li>ARCHITECT TO REVIEW VANITY SHOP DRAWINGS IN IPFS FOR LATEST INFORMATION (INCLUDING DIMENSIONS &amp; FINISHES). FOR CUSTOM VANITIES, ARCHITECT TO OBTAIN ACCEPTANCE FROM MARRIOTT REVIEW TEAM. ARCHITECT TO PROVIDE VANITY SUPPORT DESIGN. SUPPORT DESIGN SHOULD COMPLY WITH LOCAL CODES.</li> <li>NOT USED</li> <li>4-WAY/3-WAY SWITCH AT HEADBOARD AND GUESTROOM ENTRY. WIRED TO OVERHEAD ENTRY &amp; CLOSET LIGHTS. SEE E2.02 FOR DETAILS.</li> <li>REMOVABLE CEILING PANELS.</li> <li>DRAPERY PULL WANDS ARE LOOP TYPE HANDLES AND 48" MAX A.F.F.</li> <li>ANY GAP LEFT BETWEEN THE FLOORING MATERIAL AND THE GUESTROOM WALL SHOULD BE NO MORE THAN A 1/2" SO THAT THE BASE WILL COMPLETELY COVER THIS GAP.</li> <li>SECURE VANITY BASE TO FLOOR AND WALL. SECURE VANITY MIRROR TO CEILING. PROVIDE BLOCKING AS REQUIRED.</li> <li>WRAP DRAINAGE AND SUPPLY PIPES WITH INSULATING MATERIAL.</li> <li>PROVIDE (2) GFCI RECEPTACLES (EL-12) ABOVE COUNTER BACKSPLASH. CONNECT TOGETHER TO A DEDICATED SINGLE 120V CIRCUIT.</li> <li>ARCHITECT TO REVIEW DOOR &amp; SHOWER ASSEMBLY SHOP DRAWINGS IN IPFS FOR LATEST INFORMATION (INCLUDING DIMENSIONS &amp; FINISHES). FOR MODIFYING SHOWER ASSEMBLIES &amp; DOORS, ARCHITECT TO OBTAIN ACCEPTANCE FROM MARRIOTT REVIEW TEAM.</li> <li>RECESSED LIGHTS ABOVE VANITY SHALL BE LOCATED WITHIN 6" OF WALL.</li> <li>STANDARD SWITCHED OUTLET SERVING LED STRIP LIGHT (L1) &amp; NIGHT LIGHT (L2), MOUNTED ±16" AFF. ROTATED 90°, COLOR MATCH WC (322). SEE SHEET E2.02 FOR DETAILS.</li> <li>NIGHT LIGHT (L2) UNDER BENCH TO BE PLUGGED INTO ADJACENT OUTLET SO THAT PLUG CONTROLLING NIGHTLIGHT (L2) IS CONTROLLED BY SWITCH (EL-15).</li> <li>HOLES FOR LIGHTS IN CEILING PANELS TO BE CUT IN FIELD.</li> <li>BASE BOARD CAN BE PURCHASED THROUGH MARRIOTT AND IS IN THE ID SPEC MANUAL.</li> <li>REFRIGERATOR DOOR TO BE INSTALLED, SUCH THAT, DOOR SWINGS TOWARDS ADJACENT WALL.</li> <li>ELECTRICAL DEVICES FOR TV SHOULD NOT BE PROPRIETARY.</li> <li>LOW-VOLT, WIRELESS ACCESS POINT</li> </ol>	



**H** ACCESSIBLE BATH ELEVATION  
3/8" = 1'-0"

**G** ACCESSIBLE BATH ELEVATION  
3/8" = 1'-0"

**F** ACCESSIBLE BATH ELEVATION  
3/8" = 1'-0"

**E** ACCESSIBLE BATH ELEVATION  
3/8" = 1'-0"

**D** BATH ELEVATION  
3/8" = 1'-0"

**C** BATH ELEVATION  
3/8" = 1'-0"

**B** BATH ELEVATION  
3/8" = 1'-0"

**A** BATH ELEVATION  
3/8" = 1'-0"