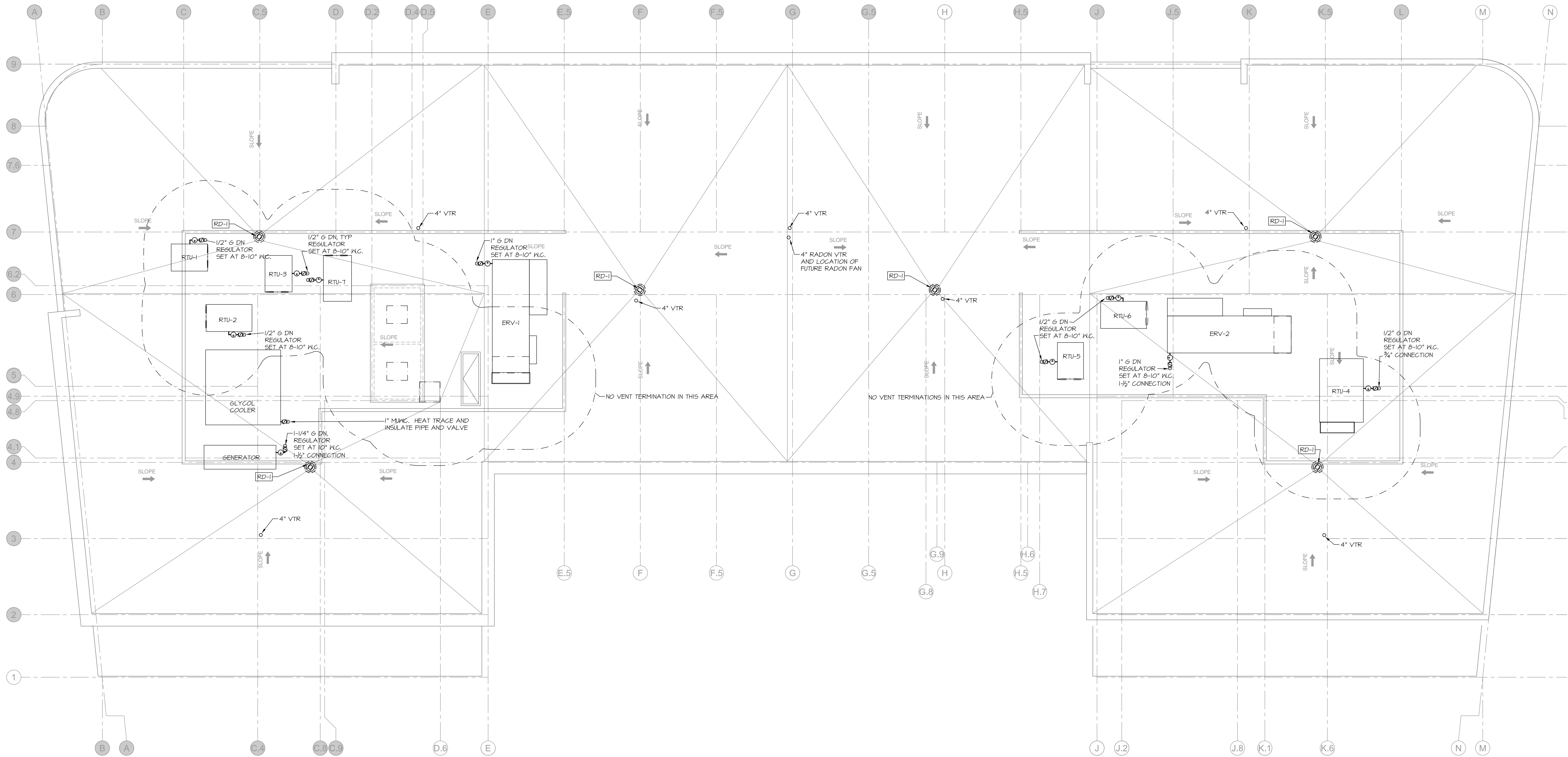
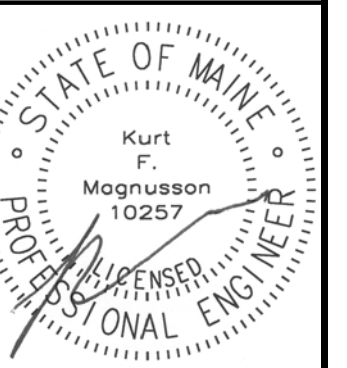


January 12, 2017 - 11:08 am
 X:\Projects\1632 Marriott AC\Drawings\1632 P1-P13.dwg
 © Copyright 2016 Opetchee Construction Corporation



MECHANICAL SYSTEMS ENGINEERS
 ROYAL RIVER CENTER, UNIT 10B
 10 FOREST FALLS DRIVE, YARMOUTH, MAINE 04096
 (207) 846-1441
 FACEBOOK: MECHANICAL SYSTEMS ENGINEERS
 © COPYRIGHT 2016
 M.S.E. Proj. 1632

1/8" = 1'-0"



AC HOTELS by MARRIOTT
 Fore Street / Hancock Street / Thames Street
 Portland, Maine

REVISION:

ISSUED:
 RELEASED FOR PRICING 12/21/2016
 REVISED 1/12/2017

project architect: KAK
 drawn by: EJP

ROOF PLUMBING PLAN

sheet number:
P7