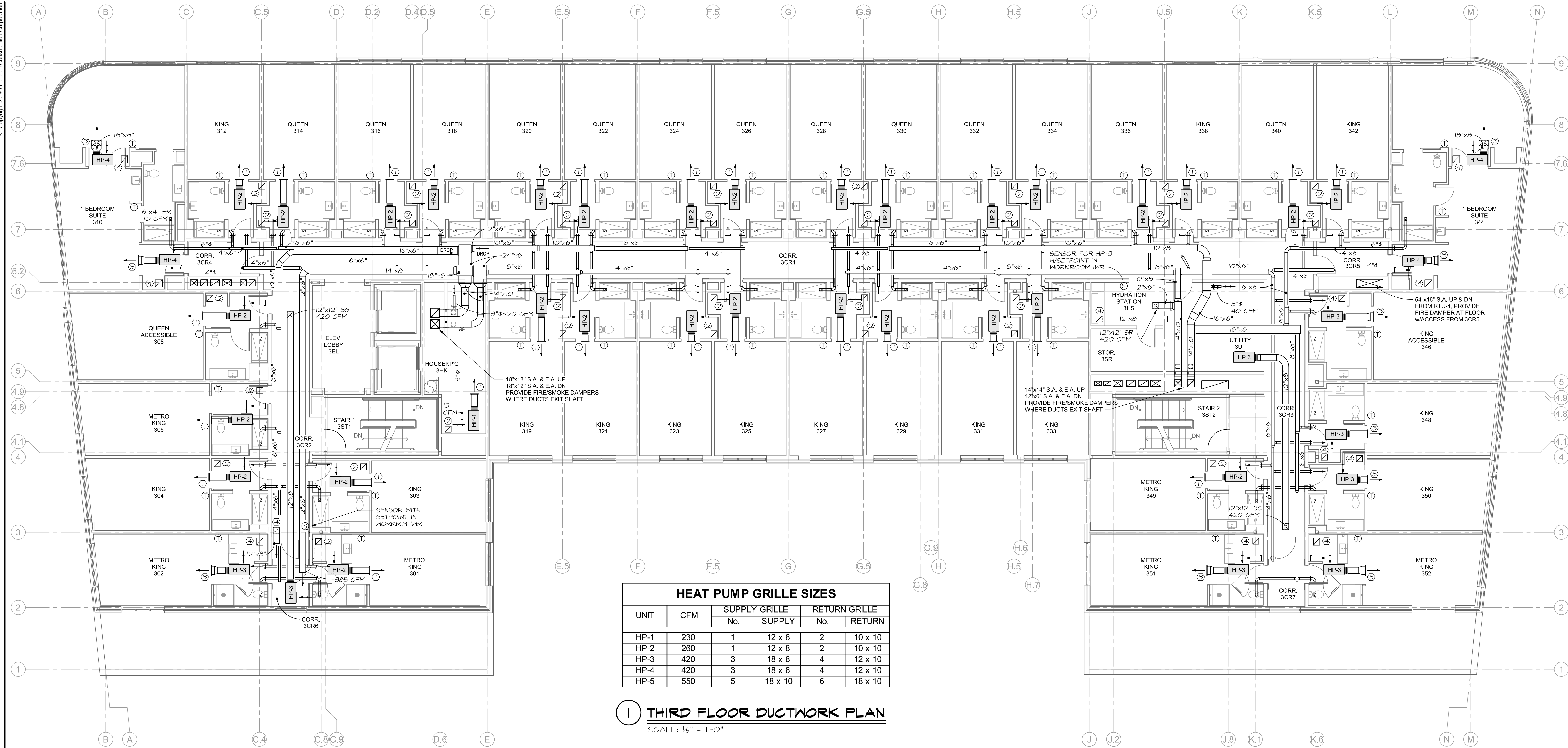


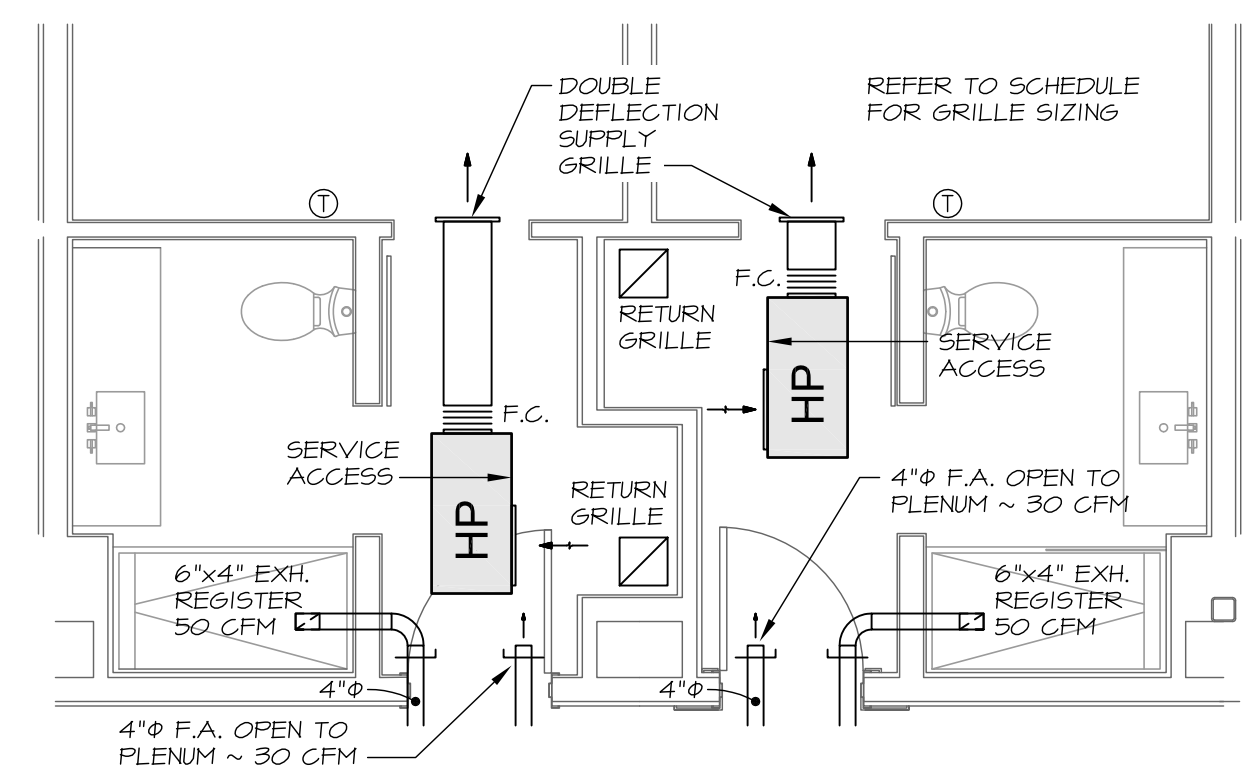
December 21, 2016 - 2:46 pm  
 X:\Projects\1632 Marriott AC Drawings\1632 M1-M7.dwg



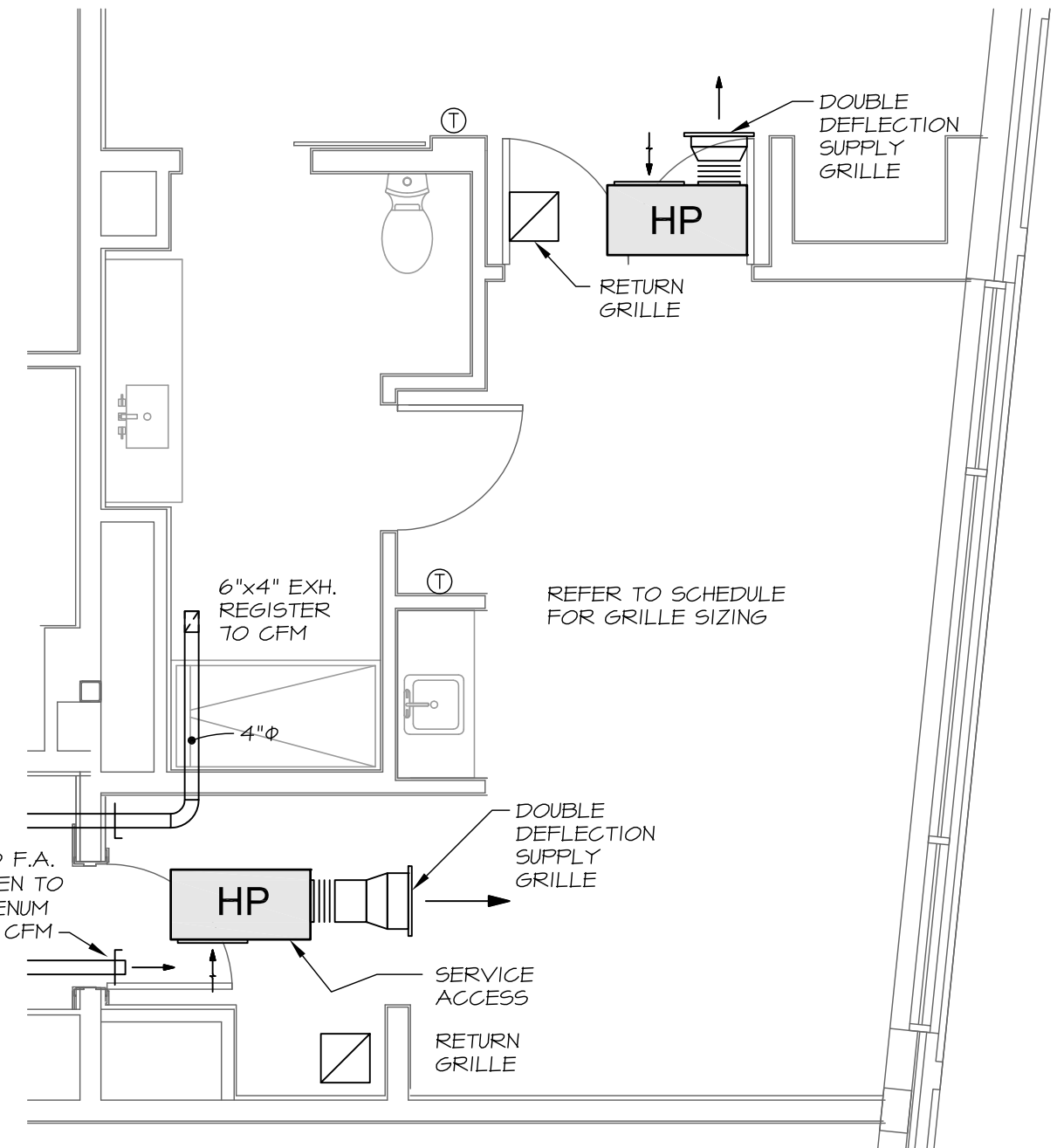
**HEAT PUMP GRILLE SIZES**

UNIT	CFM	SUPPLY GRILLE		RETURN GRILLE	
		No.	SUPPLY	No.	RETURN
HP-1	230	1	12 x 8	2	10 x 10
HP-2	260	1	12 x 8	2	10 x 10
HP-3	420	3	18 x 8	4	12 x 10
HP-4	420	3	18 x 8	4	12 x 10
HP-5	550	5	18 x 10	6	18 x 10

**1 THIRD FLOOR DUCTWORK PLAN**  
 SCALE: 1/8" = 1'-0"



**2 TYPICAL GUEST ROOM**  
 SCALE: 1/4" = 1'-0"



**3 TYPICAL SUITE**  
 SCALE: 1/4" = 1'-0"



**MECHANICAL SYSTEMS ENGINEERS**  
 ROYAL RIVER CENTER, UNIT 10B  
 10 FOREST FALLS DRIVE, YARMOUTH, MAINE 04096  
 (207) 846-1441  
 FACEBOOK: MECHANICAL SYSTEMS ENGINEERS  
 © COPYRIGHT 2016  
 M.S.E. Proj. 1632

**OPECHEE**  
 CONSTRUCTION CORPORATION

11 CORPORATE DRIVE • BELMONT, NH 03020  
 PHONE (603) 887-8888 • WWW.OPECHEE.COM

STATE OF MAINE  
 Kurt F. Magnusson  
 0257  
 LICENSED PROFESSIONAL ENGINEER

**AC HOTELS by MARRIOTT**  
 Fore Street / Hancock Street / Thames Street  
 Portland, Maine

REVISION:

ISSUED:  
 RELEASED FOR PRICING 12/21/2016

project architect: KAK  
 drawn by: REM

**THIRD FLOOR  
 MECHANICAL  
 DUCTWORK**

sheet number:  
**M3**