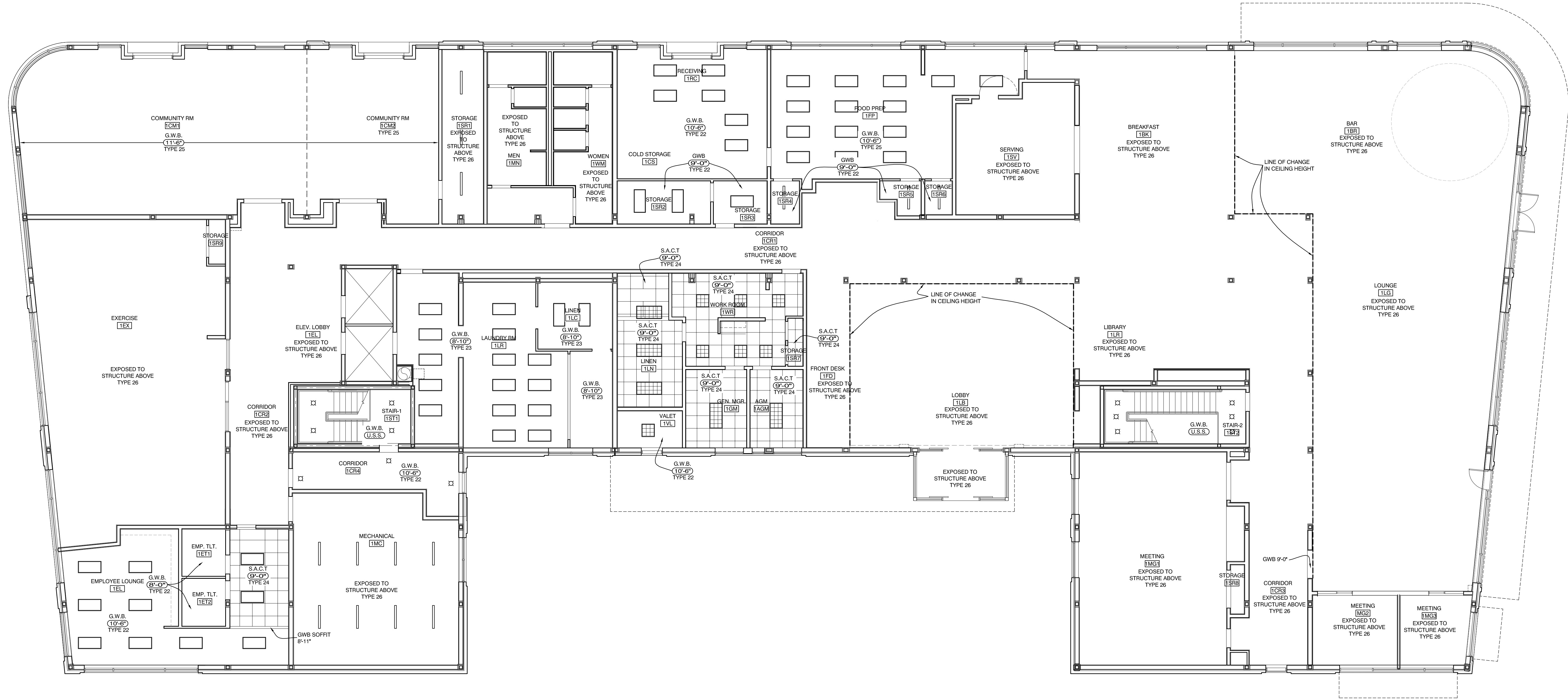


### REFLECTED CEILING PLAN LEGEND

SYMBOL	DESCRIPTION
	2'x2' REVEALED EDGE SMOOTH FACE SUSPENDED ACOUSTICAL CEILING TILE AND WHITE PAINTED METAL GRID UNLESS NOTED OTHERWISE (S.A.C.T.)
	GYPHUM WALL BOARD FINISH
	EXHAUST FAN DIFFUSER
	RETURN AIR DIFFUSER
	SUPPLY AIR DIFFUSER
	LINEAR DIFFUSER
	DECORATIVE SUSPENDED LIGHT
	RECESSED DOWNLIGHT
	FLUORESCENT STRIP LIGHT
	2'x2' or 2'x4' RECESSED FLUORESCENT LIGHT WITH PARABOLIC LENS
	2'x4' RECESSED FLUORESCENT LIGHT WITH PRISMATIC LENS

**CEILING TYPE ABBREVIATIONS**  
 G.W.B. = GYPHUM WALL BOARD  
 G.W.B.S. = GYPHUM WALL BOARD SOFFIT WITH PAINTED FINISH  
 S.A.C.T. = REVEALED EDGE SUSPENDED ACOUSTICAL CEILING TILE  
 S.A.C.T.C. = SUSPENDED ACOUSTICAL CEILING TILE CLEANROOM RATED

**NOTE:**  
 SEE ID SERIES DRAWINGS FOR EXTENT & DETAIL OF PUBLIC AREA CEILING FINISHES, DETAILS & LIGHTING REQUIREMENTS.  
 THIS PLAN SHOWS THE CEILING ASSEMBLIES TO PROVIDE THE REQUIRED STC RATINGS AT ALL PUBLIC AREAS. ALL FINISHES IN PUBLIC AREAS BEYOND WHAT IS SHOWN ON THIS PLAN IS PART OF INTERIOR FINISH & MILLWORK PACKAGE.



**AC HOTELS by MARRIOTT**  
 Fore Street / Hancock Street / Thames Street  
 Portland, Maine

**REVISION:**  
 12-23-16 RATING REMOVED FROM CLG TAG  
 12-30-16 PUBLIC AREA CEILINGS REMOVED

**ISSUED:**  
 09-30-16 60% SUBMISSION  
 11-22-16 CEILING TAGS ADDED  
 03-14-17 BUILDING PERMIT

project architect: KAK  
 drawn by: DLS

**FIRST FLOOR REFLECTED CEILING PLAN**

sheet number:  
**A8.01**