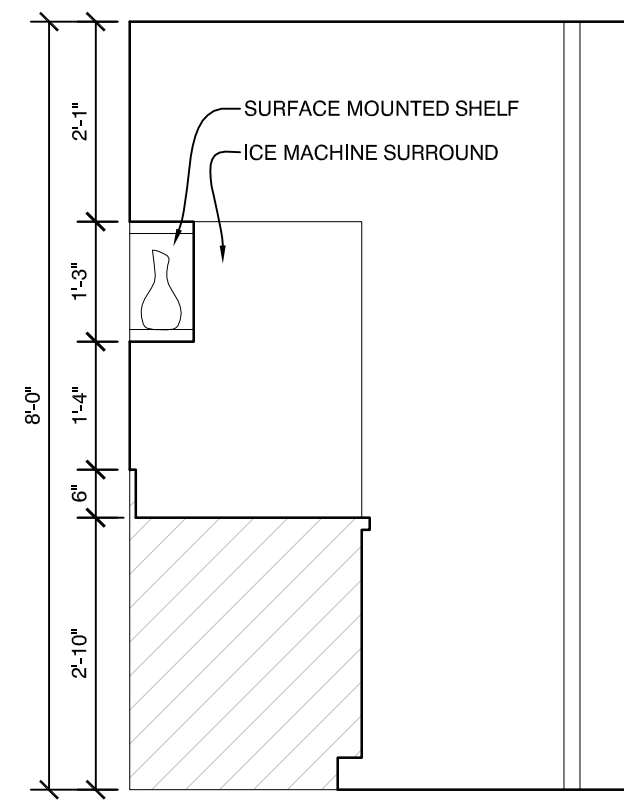
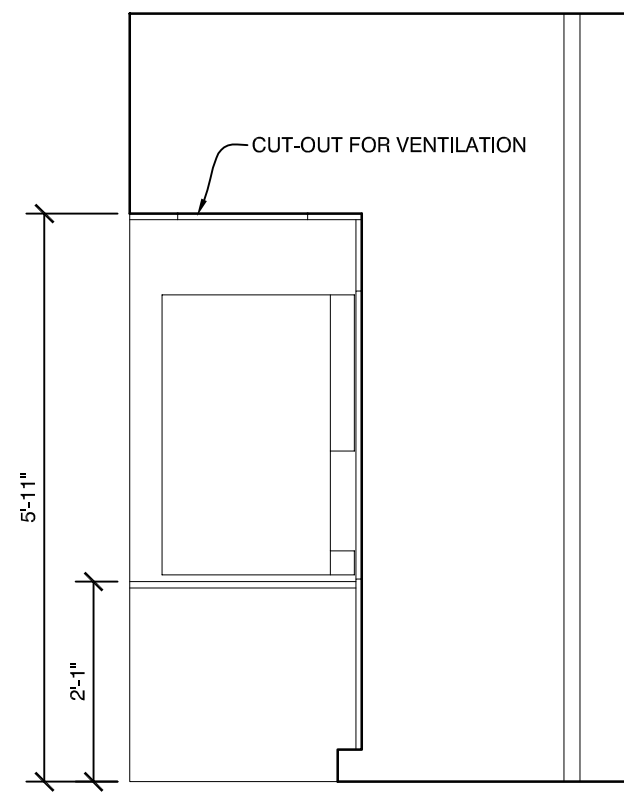


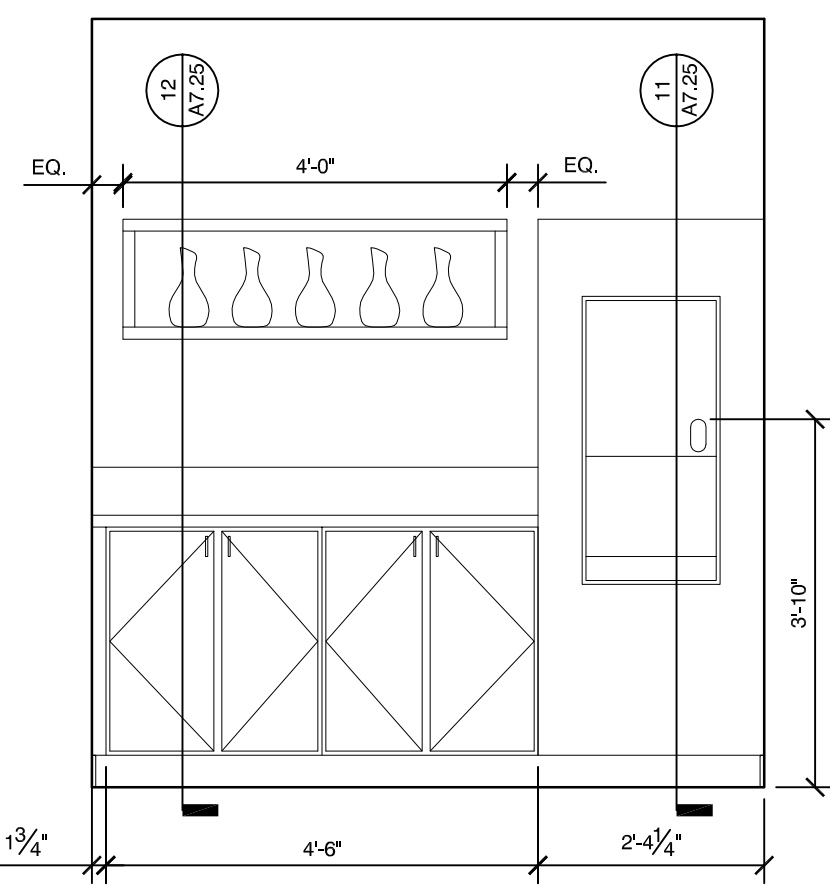
Copyright 2015 Opechee Construction Corporation
 Tuesday, March 14, 2017 11:45:02 AM



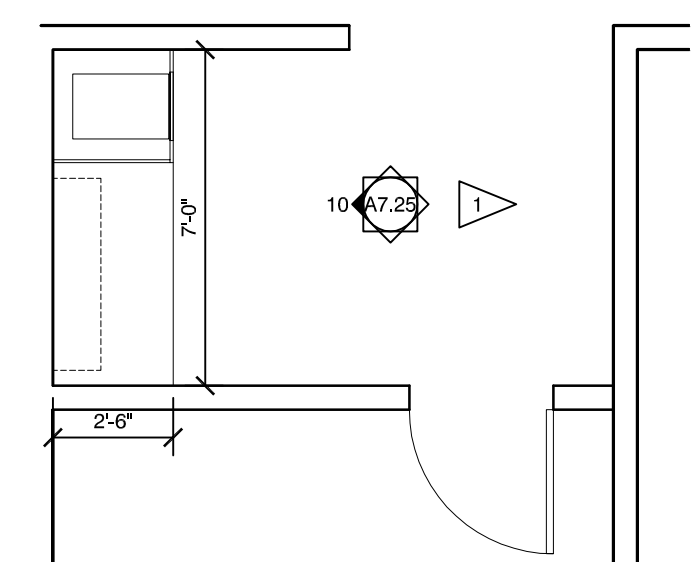
12 HYDRATION STATION
 1/2" = 1'-0"



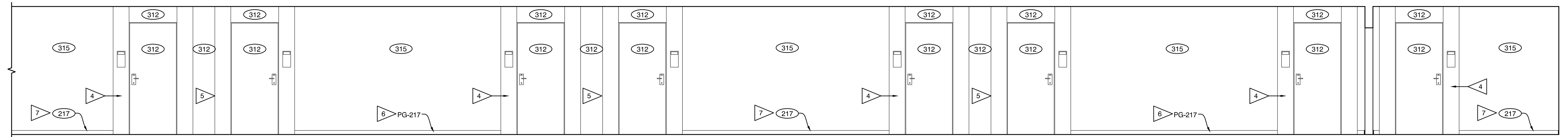
11 HYDRATION STATION
 1/2" = 1'-0"



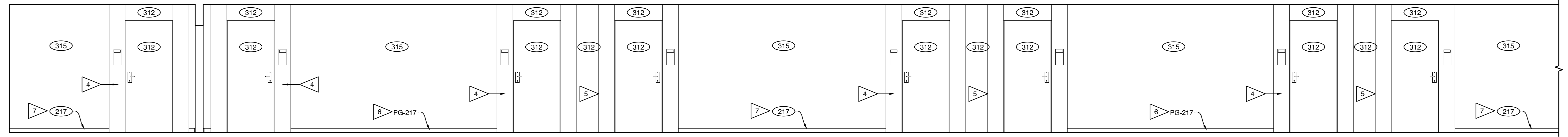
10 HYDRATION STATION
 1/2" = 1'-0"



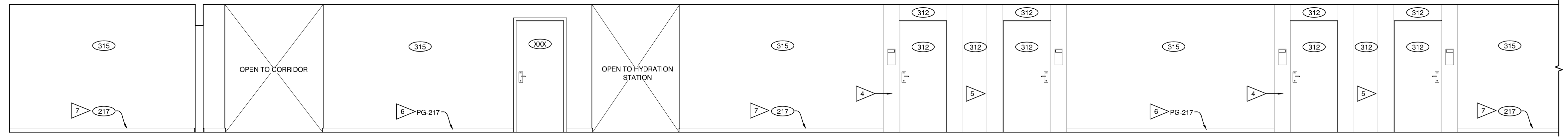
9 HYDRATION STATION - PLAN DETAIL
 1/4" = 1'-0"



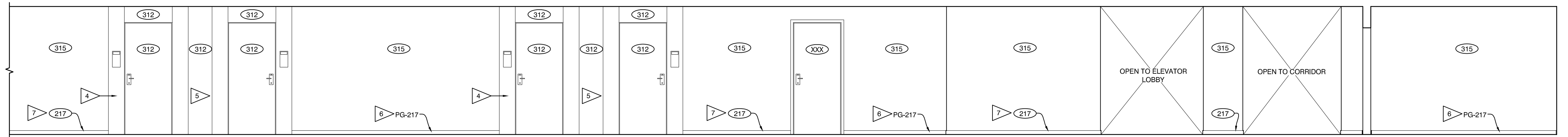
8 PUBLIC CORRIDOR ELEVATION
 1/4" = 1'-0"



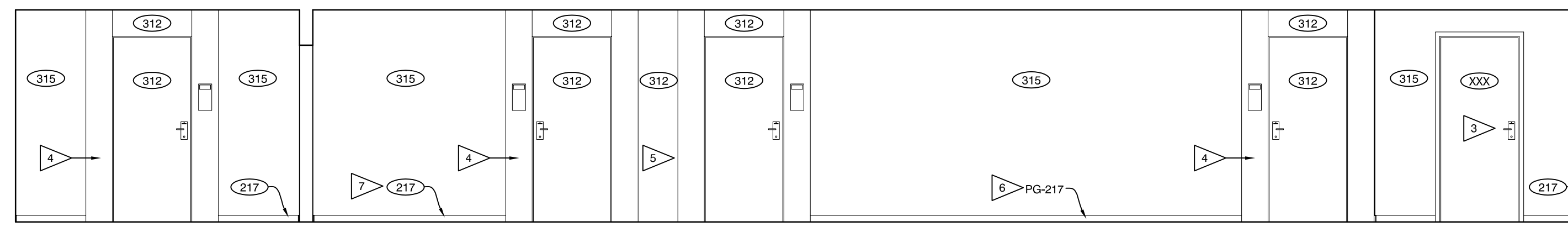
7 PUBLIC CORRIDOR ELEVATION
 1/4" = 1'-0"



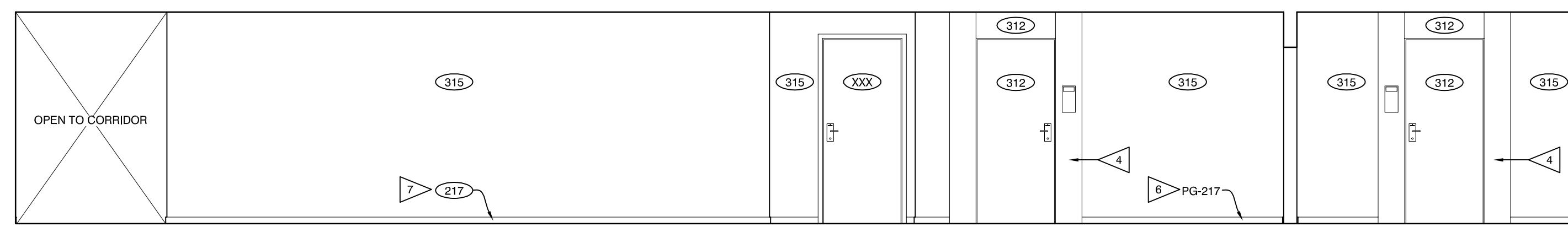
6 PUBLIC CORRIDOR ELEVATION
 1/4" = 1'-0"



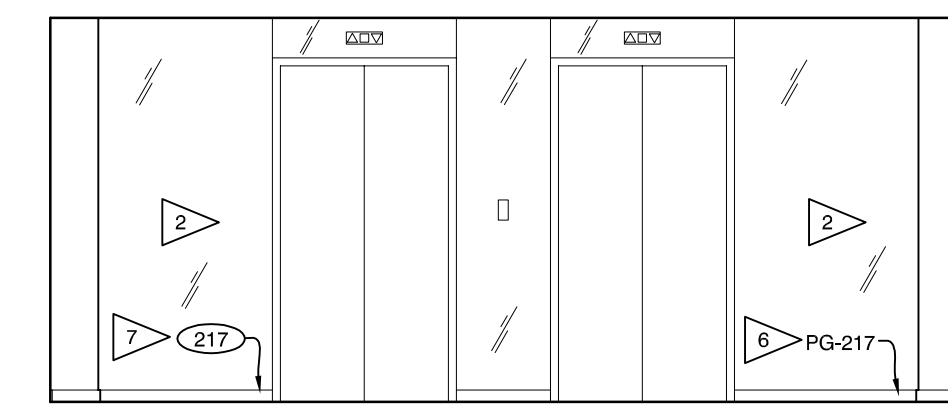
5 PUBLIC CORRIDOR ELEVATION
 1/4" = 1'-0"



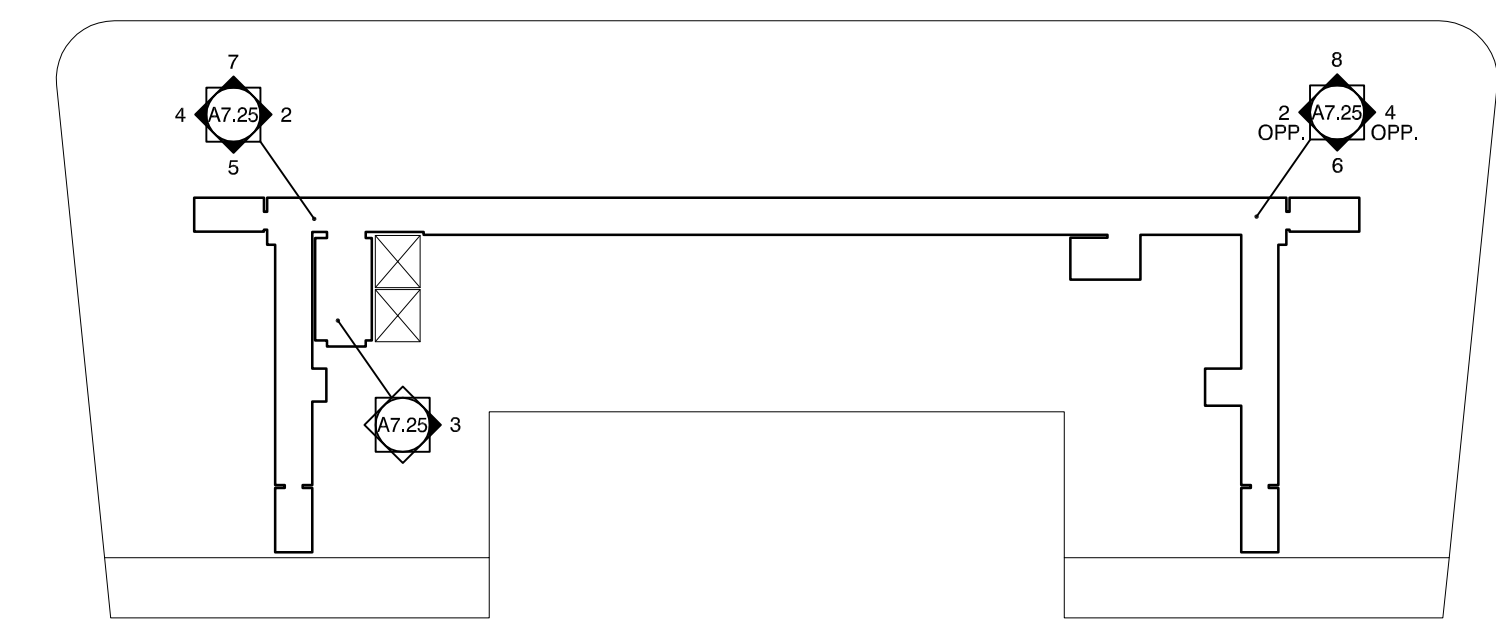
4 PUBLIC CORRIDOR ELEVATION
 1/4" = 1'-0"



2 PUBLIC CORRIDOR ELEVATION
 1/4" = 1'-0"



3 ELEVATOR LOBBY
 1/4" = 1'-0"



1 TYP. PUBLIC CORRIDOR KEY PLAN
 1/32" = 1'-0"

- 1 HARD WATER PROOF FINISH SURFACE AT HYDRATION STATION. SUBMIT TO MARRIOTT FOR REVIEW.
- 2 GLASS PANEL SURROUNDS AT ELEVATOR. SUBMIT TO MARRIOTT FOR REVIEW.
- 3 PROVIDE TWO ROOMS ON EACH GUESTROOM FLOOR THAT CAN BE KEYPED TOGETHER.
- 4 HPL DOOR SURROUNDS (AL-312) - SEE A6.04 FOR DETAILS. PANEL AT JAMB IS HELD BACK 1/2" FROM FRAME. PANEL AT HEADER IS HELD BACK 1" FROM CORRIDOR CEILING. DIMENSIONS TO BE VERIFIED IN FIELD PRIOR TO INSTALL.
- 5 HPL WALL PANEL (AL-312) TO FILL IN BETWEEN INDICATED DOOR SURROUNDS. REFER TO A7.0X FOR ELEVATIONS & DETAILS.
- 6 BASE BOARDS CAN BE PURCHASED THROUGH MARRIOTT AND IS IN THE ID SPEC MANUAL.
- 7 ANY GAP LEFT BETWEEN THE FLOORING MATERIAL AND THE GUESTROOM WALLS SHOULD BE NO MORE THAN A 1/2" SO THAT THE BASE WILL COMPLETELY COVER THIS GAP.