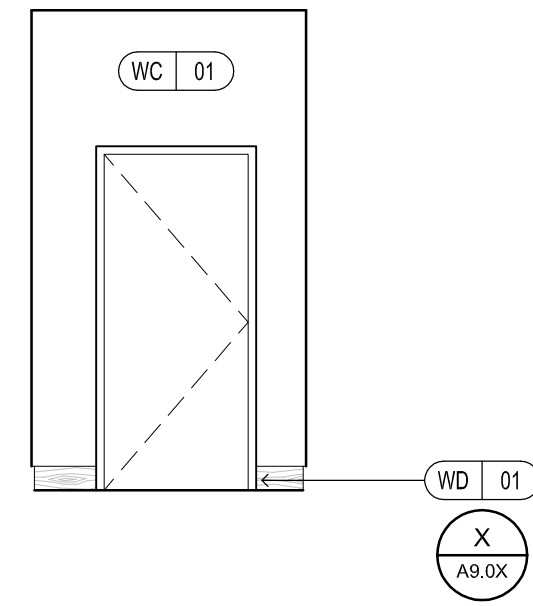
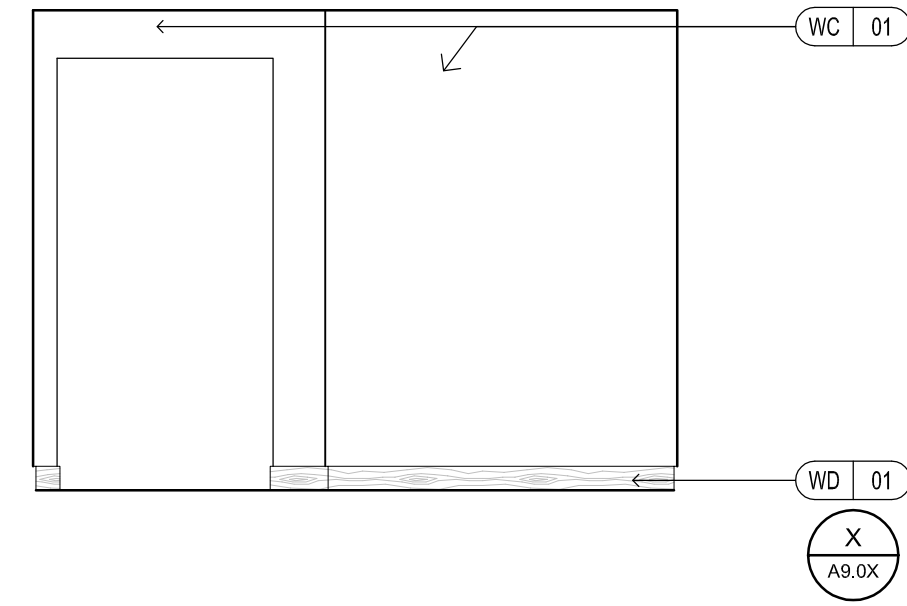


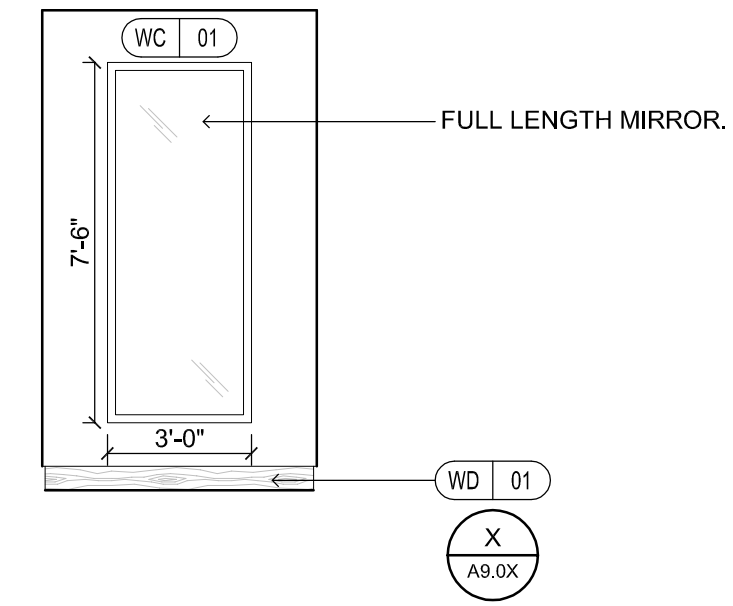
1 MENS BATHROOM ENTRY
1/4" = 1'-0"



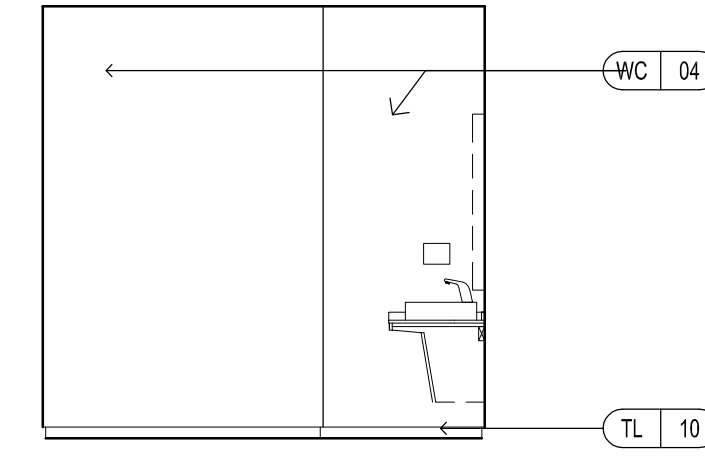
2 WOMENS BATHROOM ENTRY
1/4" = 1'-0"



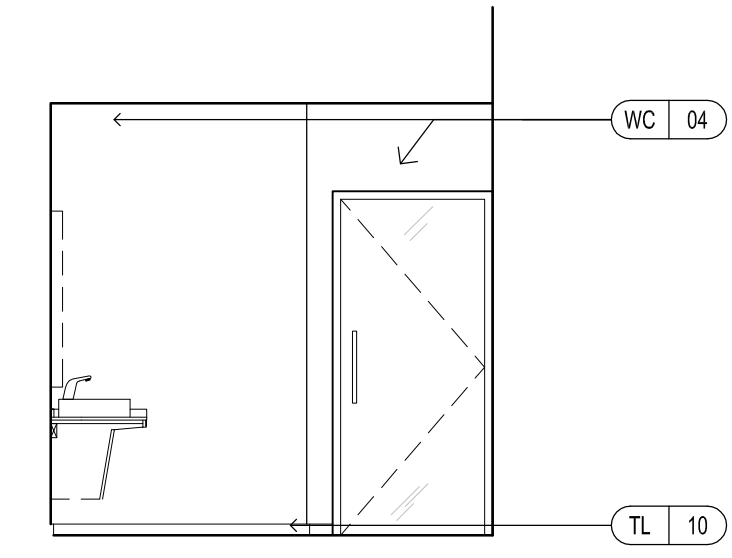
3 BATHROOM EXIT TO CORRIDOR
1/4" = 1'-0"



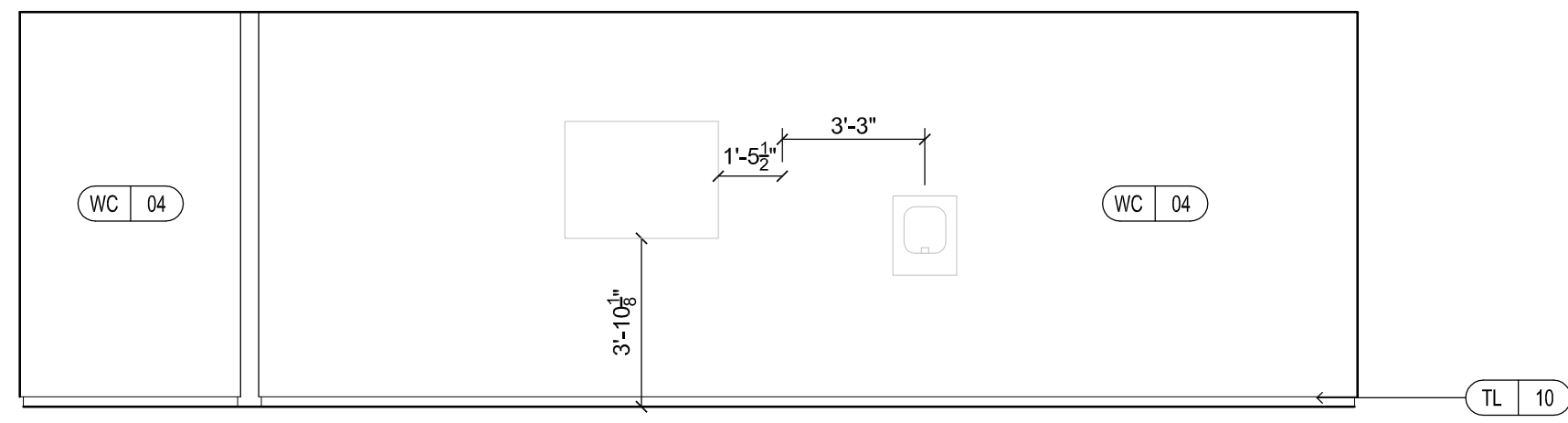
4 BATHROOM ENTRY
1/4" = 1'-0"



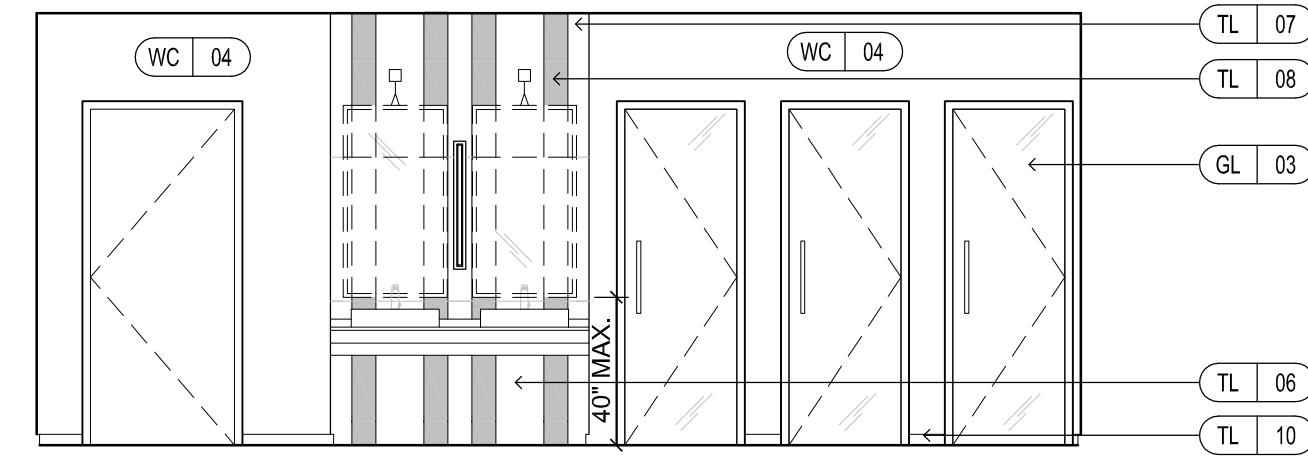
5 WOMENS BATHROOM
1/4" = 1'-0"



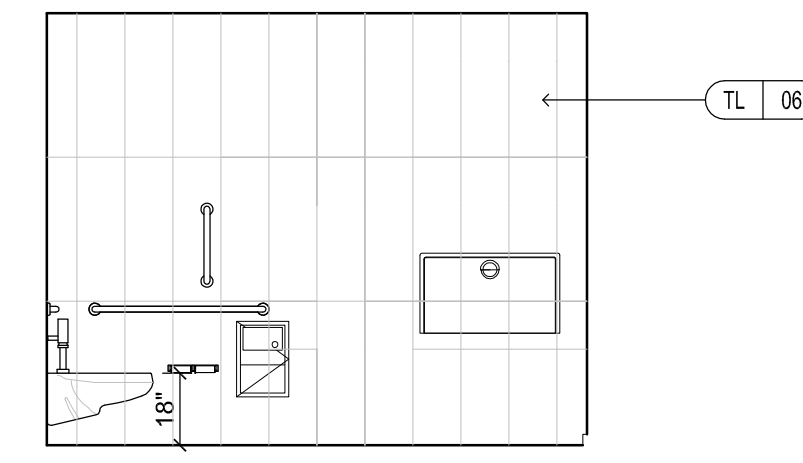
6 WOMENS BATHROOM
1/4" = 1'-0"



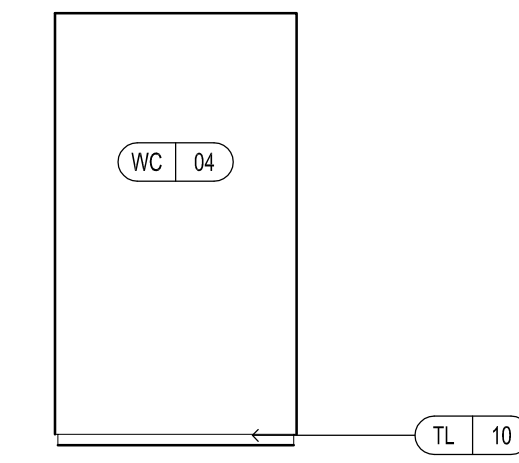
7 WOMENS BATHROOM
1/4" = 1'-0"



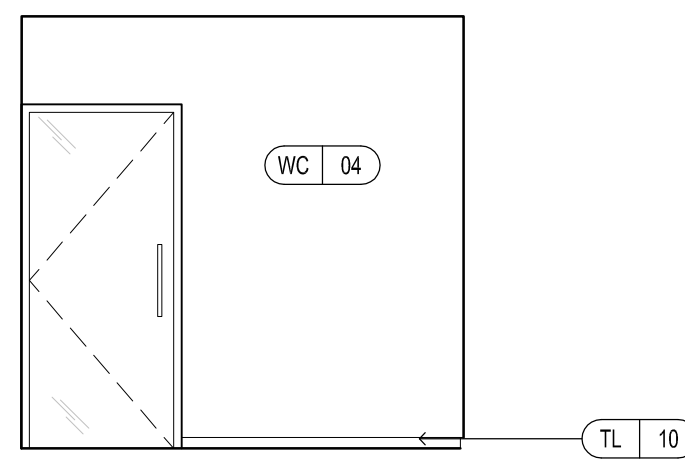
8 WOMENS BATHROOM
1/4" = 1'-0"



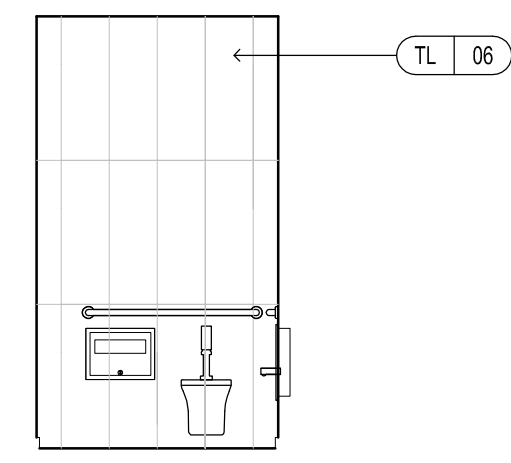
9 ADA BATHROOM
1/4" = 1'-0"



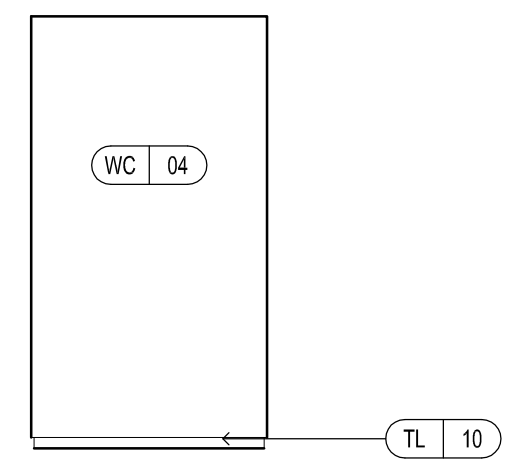
10 ADA BATHROOM
1/4" = 1'-0"



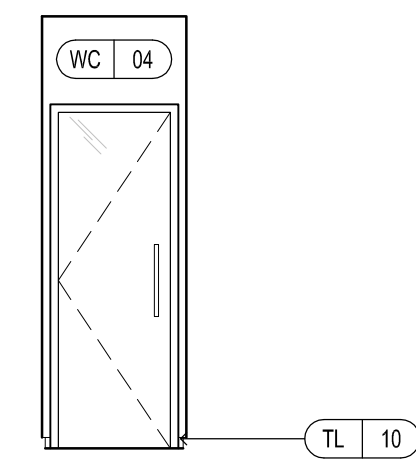
11 ADA BATHROOM
1/4" = 1'-0"



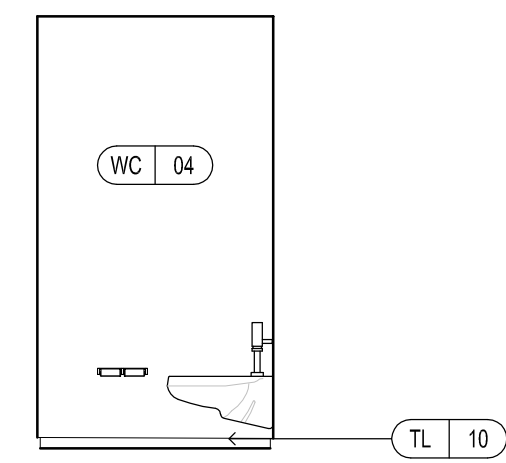
12 ADA BATHROOM
1/4" = 1'-0"



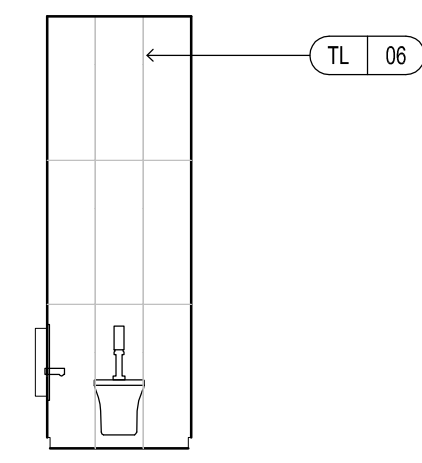
13 TYP. STALL
1/4" = 1'-0"



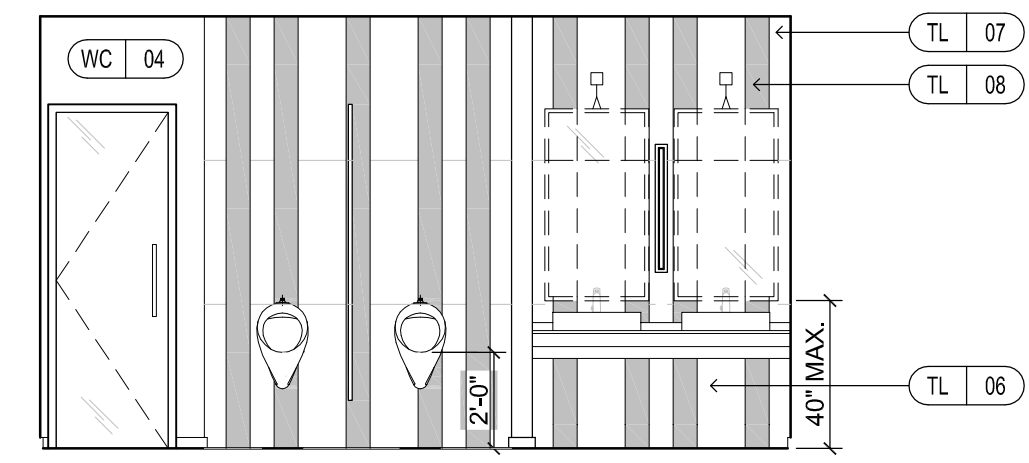
14 TYP. STALL
1/4" = 1'-0"



15 TYP. STALL
1/4" = 1'-0"



16 TYP. STALL
1/4" = 1'-0"



17 ADA BATHROOM
1/4" = 1'-0"

REVISION:

ISSUED:
08-12-16 FOUNDATION & STEEL PERMIT
10-18-16 60% MARRIOTT REVIEW
03-14-17 BUILDING PERMIT

project architect: KAK
drawn by: FAC

INTERIOR
ELEVATIONS
PUBLIC RESTROOMS

sheet number:

A7.09