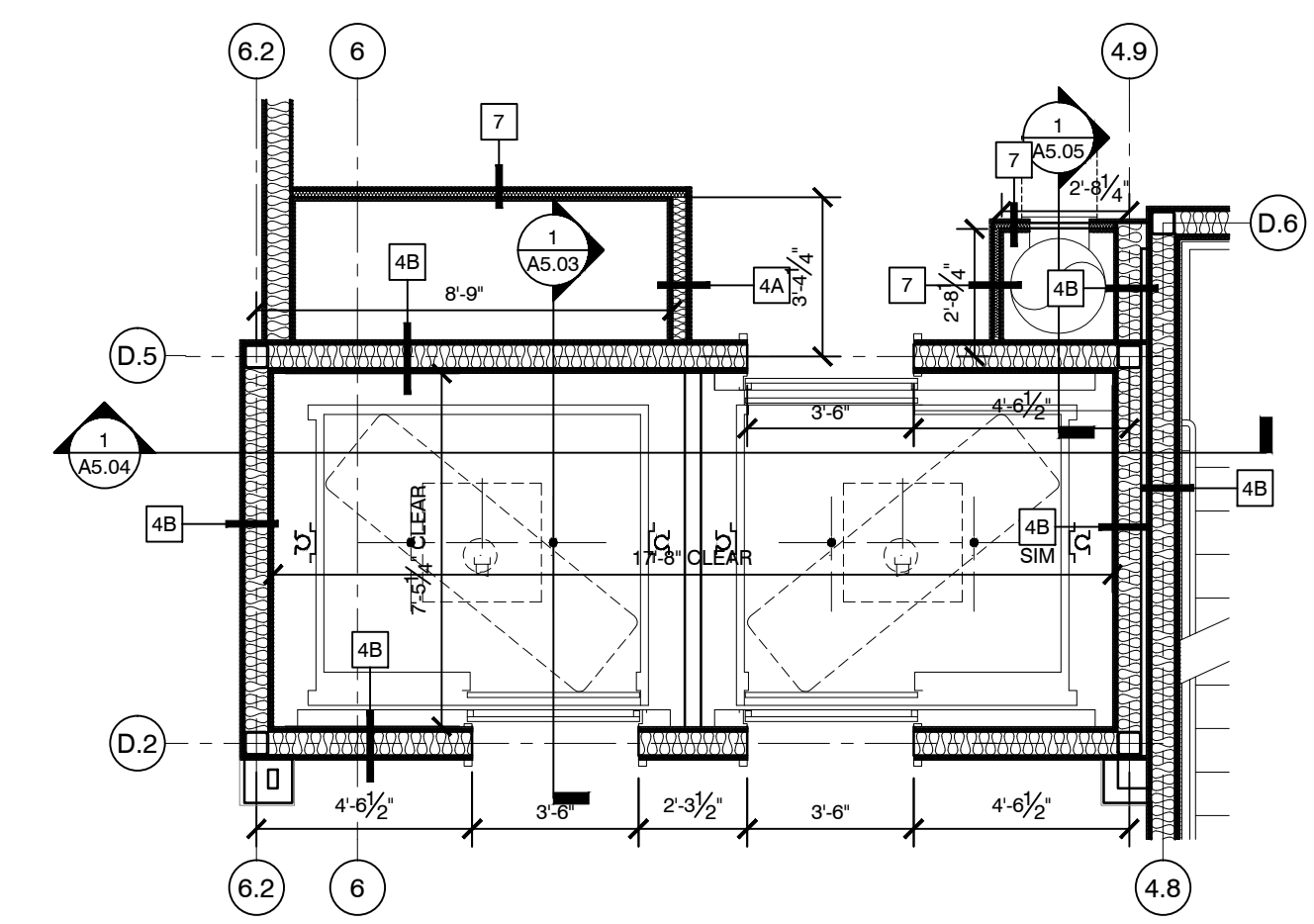
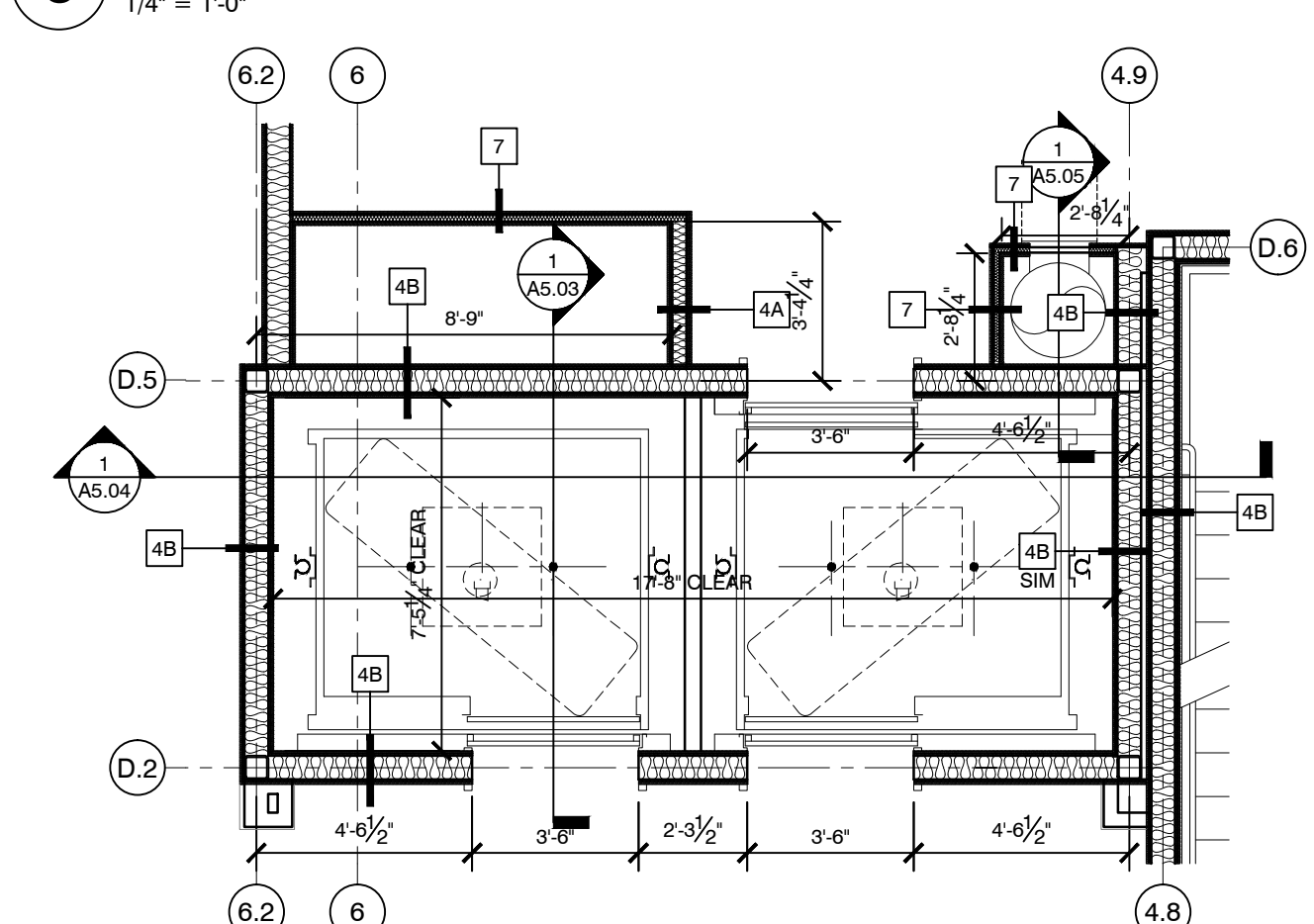


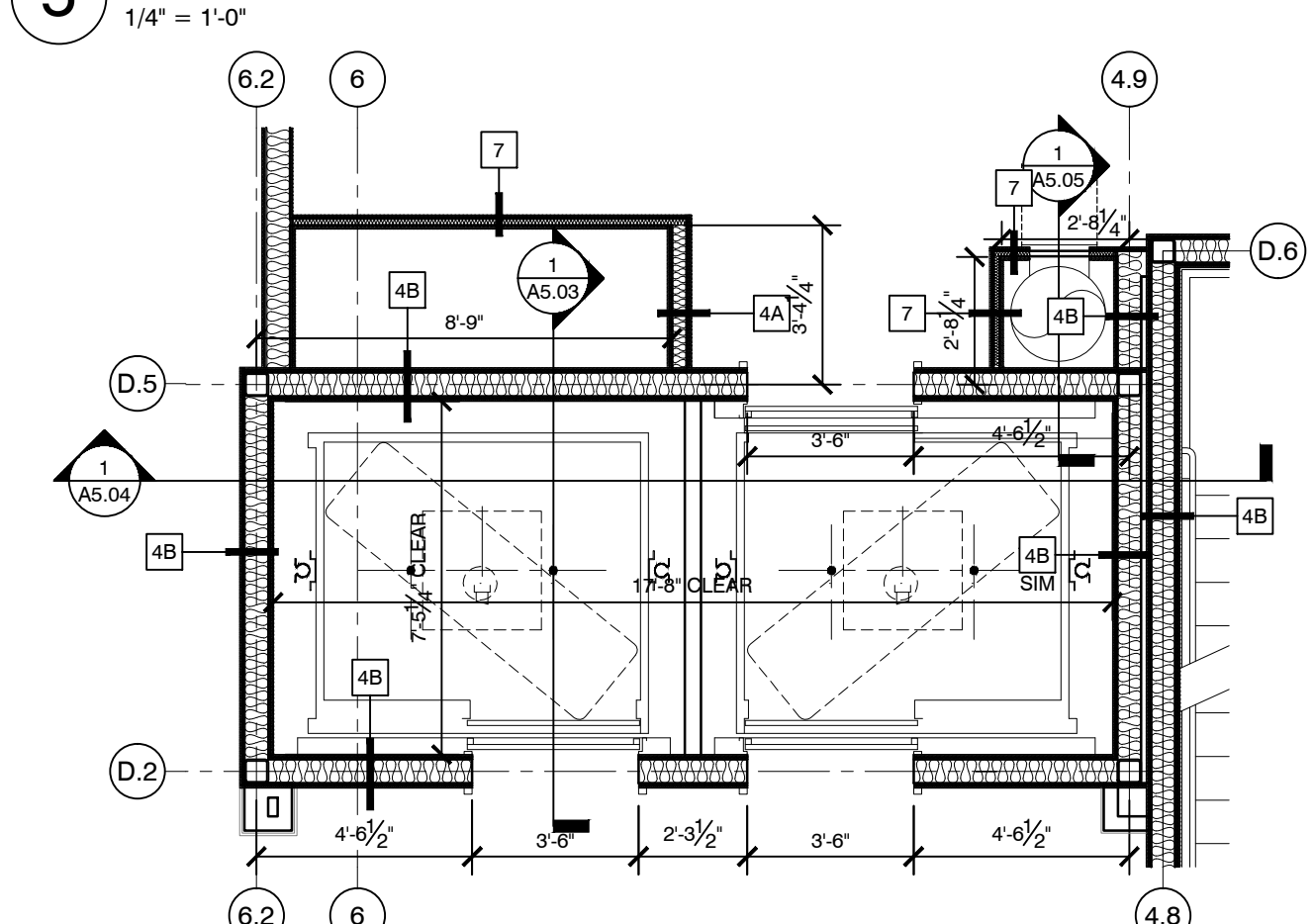
7 ELEVATOR SIXTH FLOOR PLAN
1/4" = 1'-0"



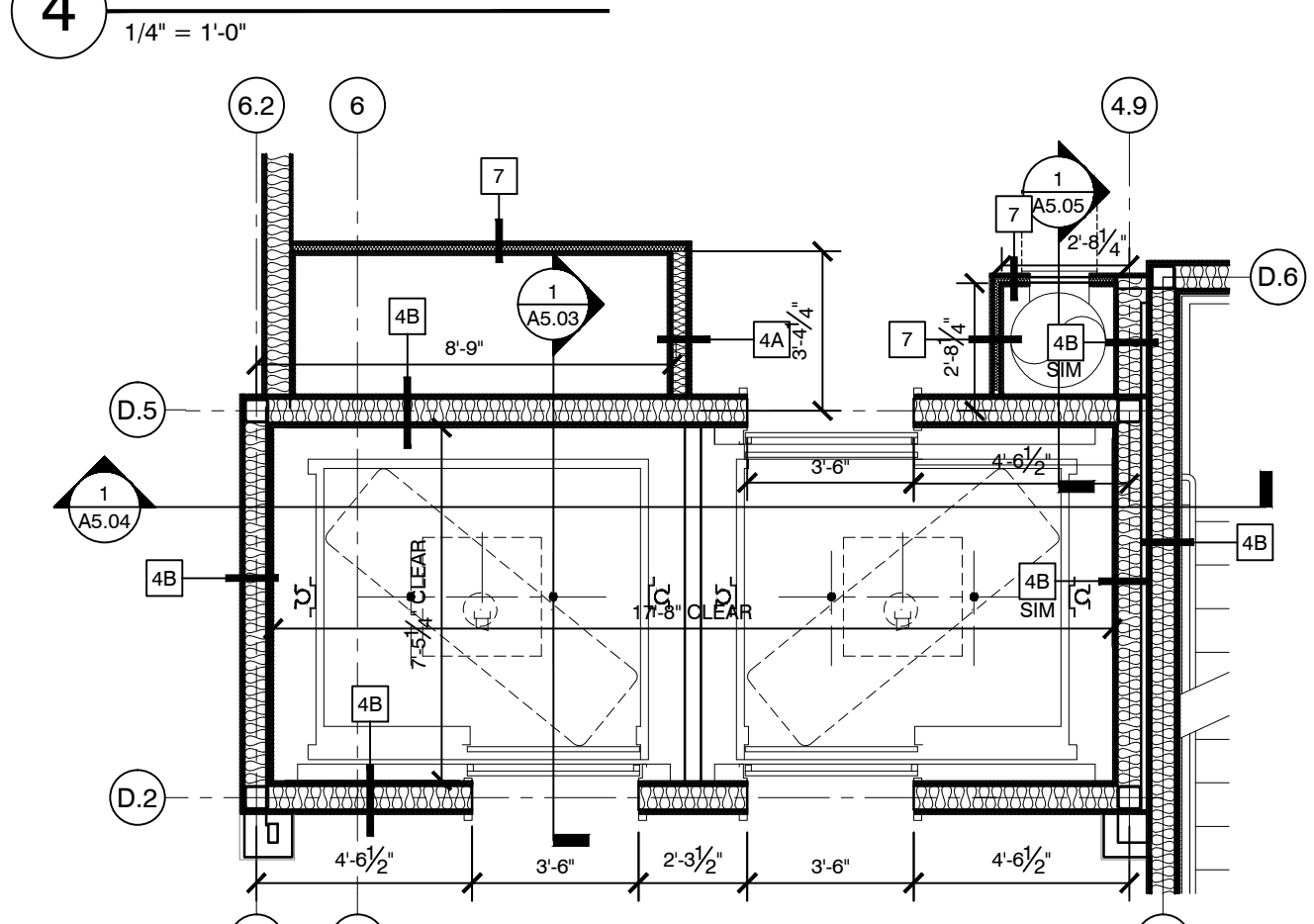
6 ELEVATOR FIFTH FLOOR PLAN
1/4" = 1'-0"



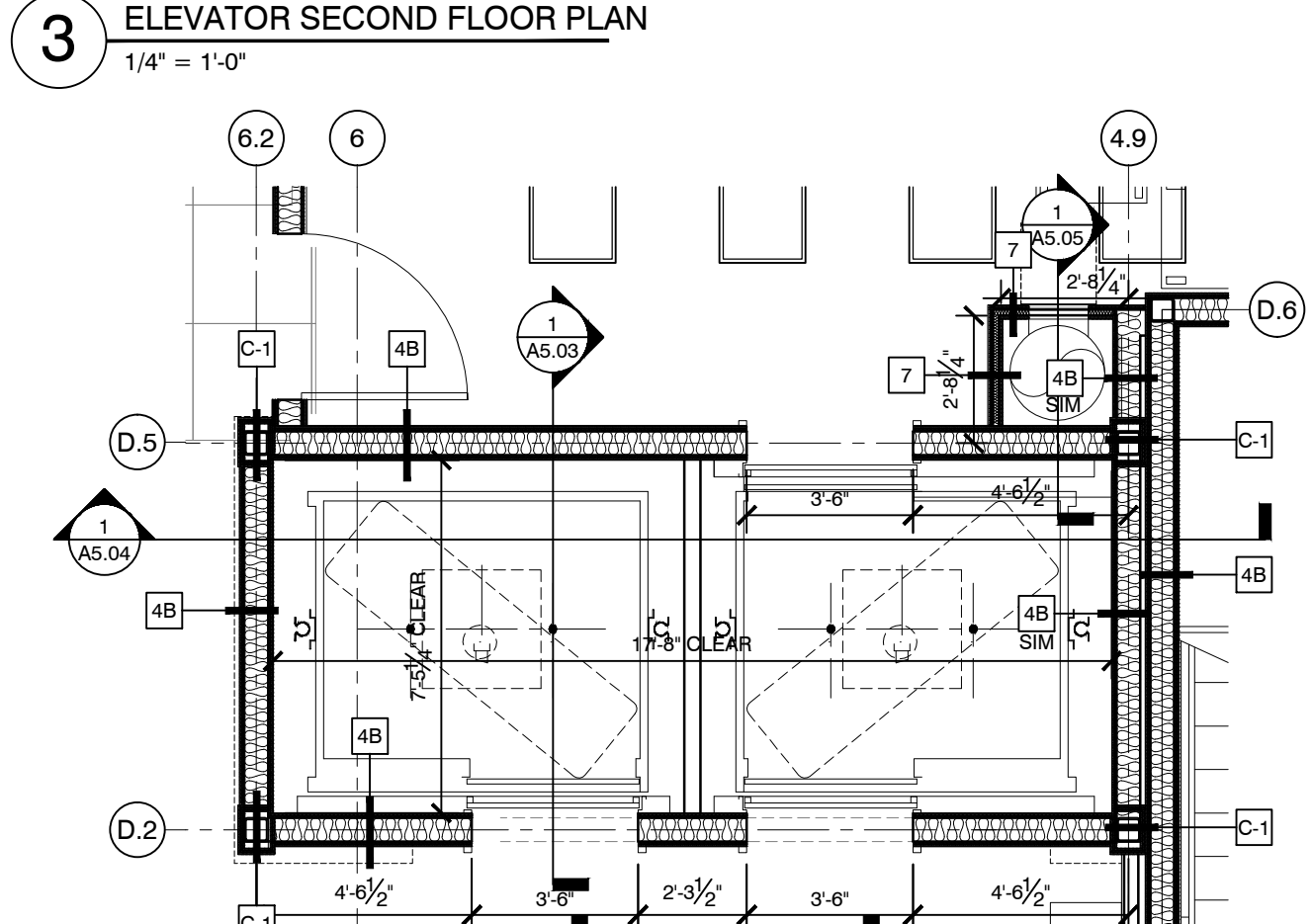
5 ELEVATOR FOURTH FLOOR PLAN
1/4" = 1'-0"



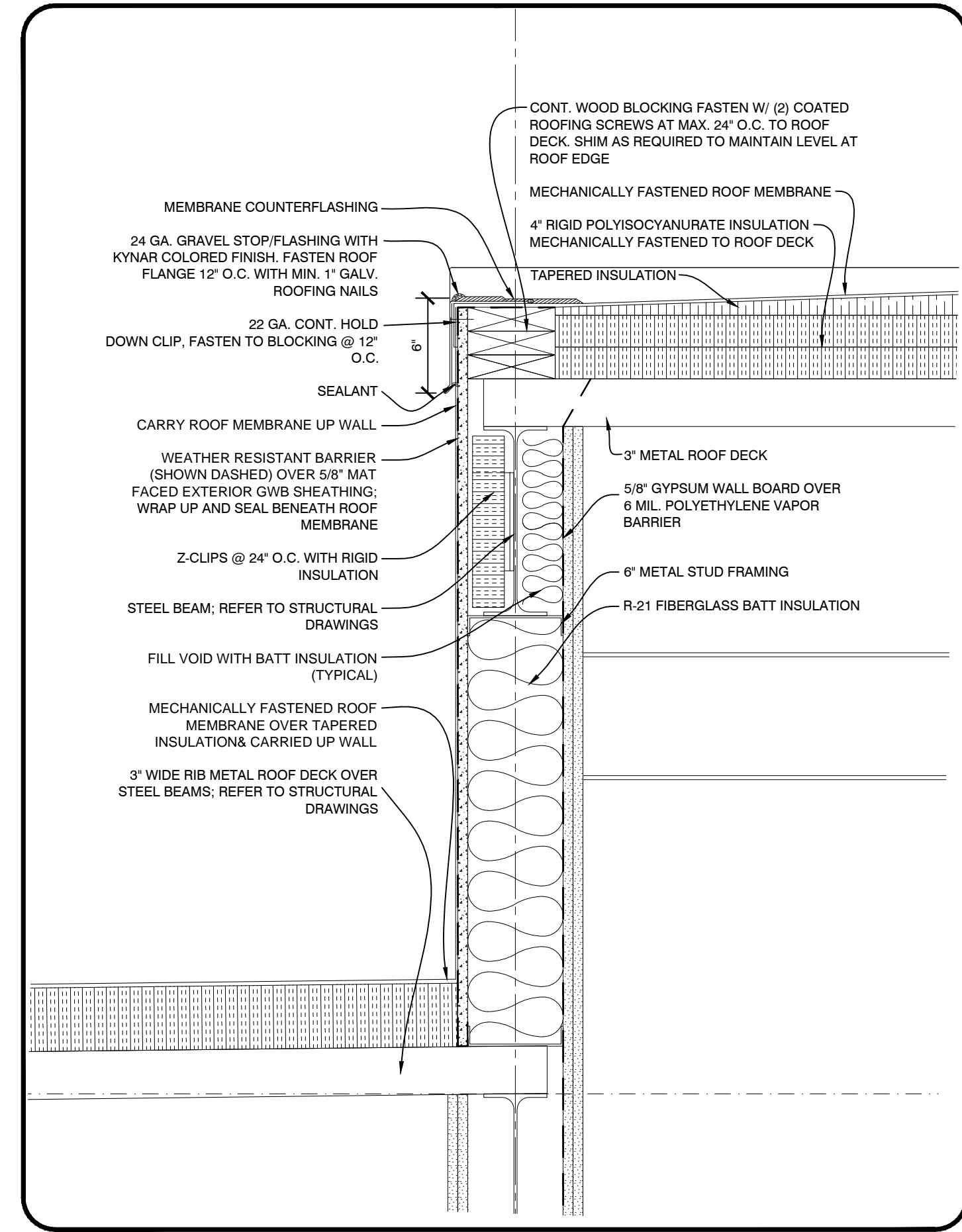
4 ELEVATOR THIRD FLOOR PLAN
1/4" = 1'-0"



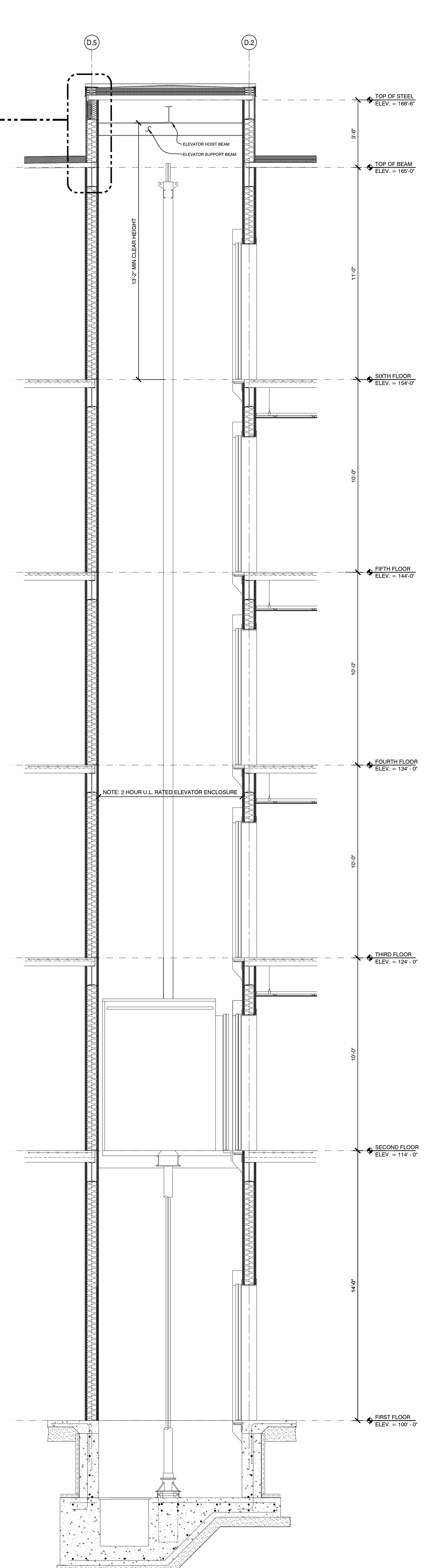
3 ELEVATOR SECOND FLOOR PLAN
1/4" = 1'-0"



2 ELEVATOR FIRST FLOOR PLAN
1/4" = 1'-0"



ELEVATOR ROOF EAVE DETAIL
1 1/2" = 1'-0"



1 ELEVATOR SECTION
3/8" = 1'-0"

A5.03
Sheet number

ELEVATOR SECTION & PLAN DETAILS

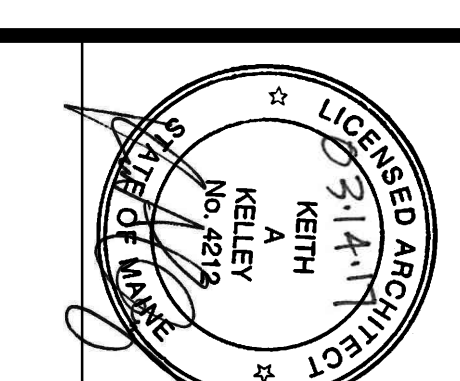
Project architect: **KAK**
drawn by: **DLS**

ISSUED:
10-18-16 60% MARRIOTT REVIEW
10-21-16 BUILDING SHELL PERMIT
03-14-17 BUILDING PERMIT

REVISION:
11-18-16 WALL TYPE TAGS ADDED
12-23-16 DIMS UPDATED PER SHOP DWG

AC HOTELS by MARRIOTT

Fore Street / Hancock Street / Thames Street
Portland, Maine



OPECHEE
CONSTRUCTION CORPORATION

11 CORPORATE DRIVE ■ BELMONT ■ NH 03220
PHONE (603) 527-9090 ■ WWW.OPECHEE.COM