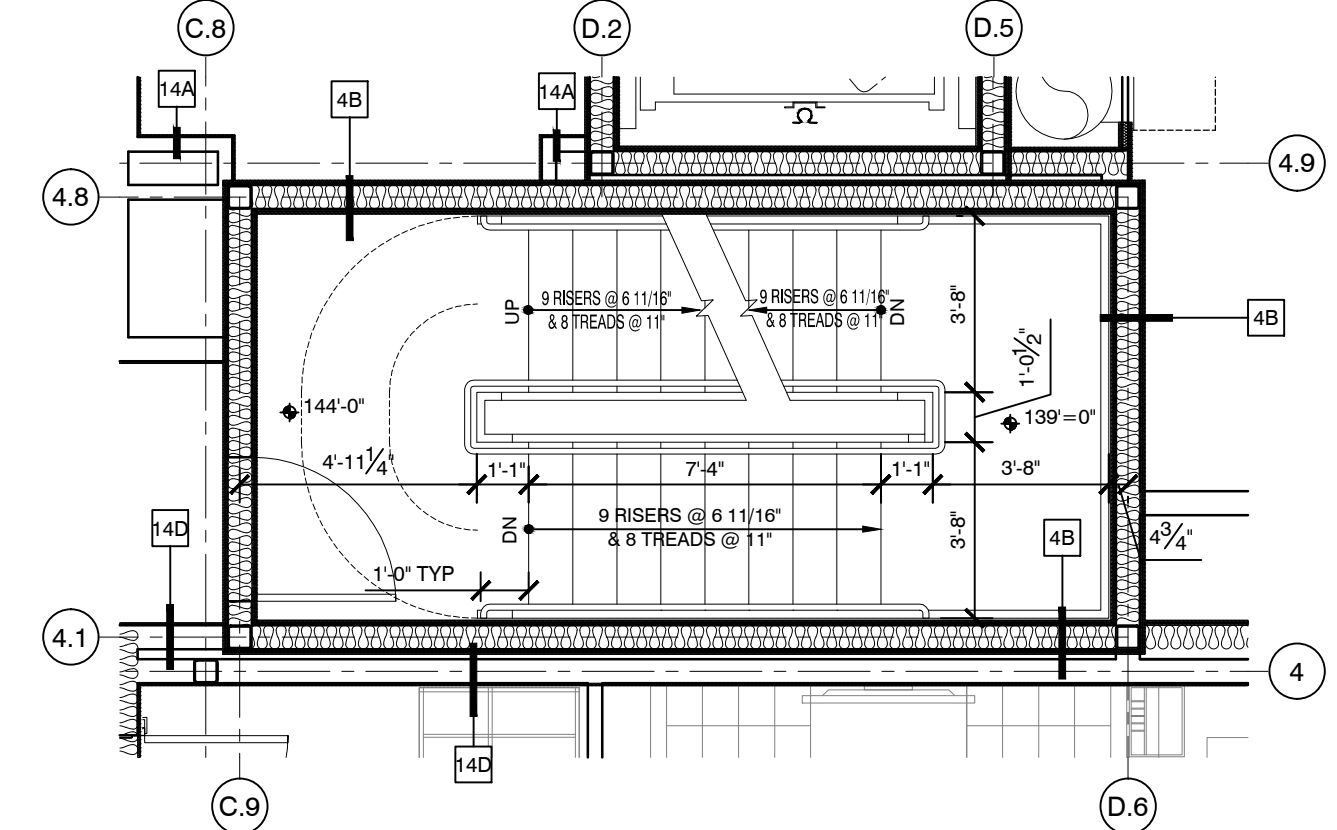
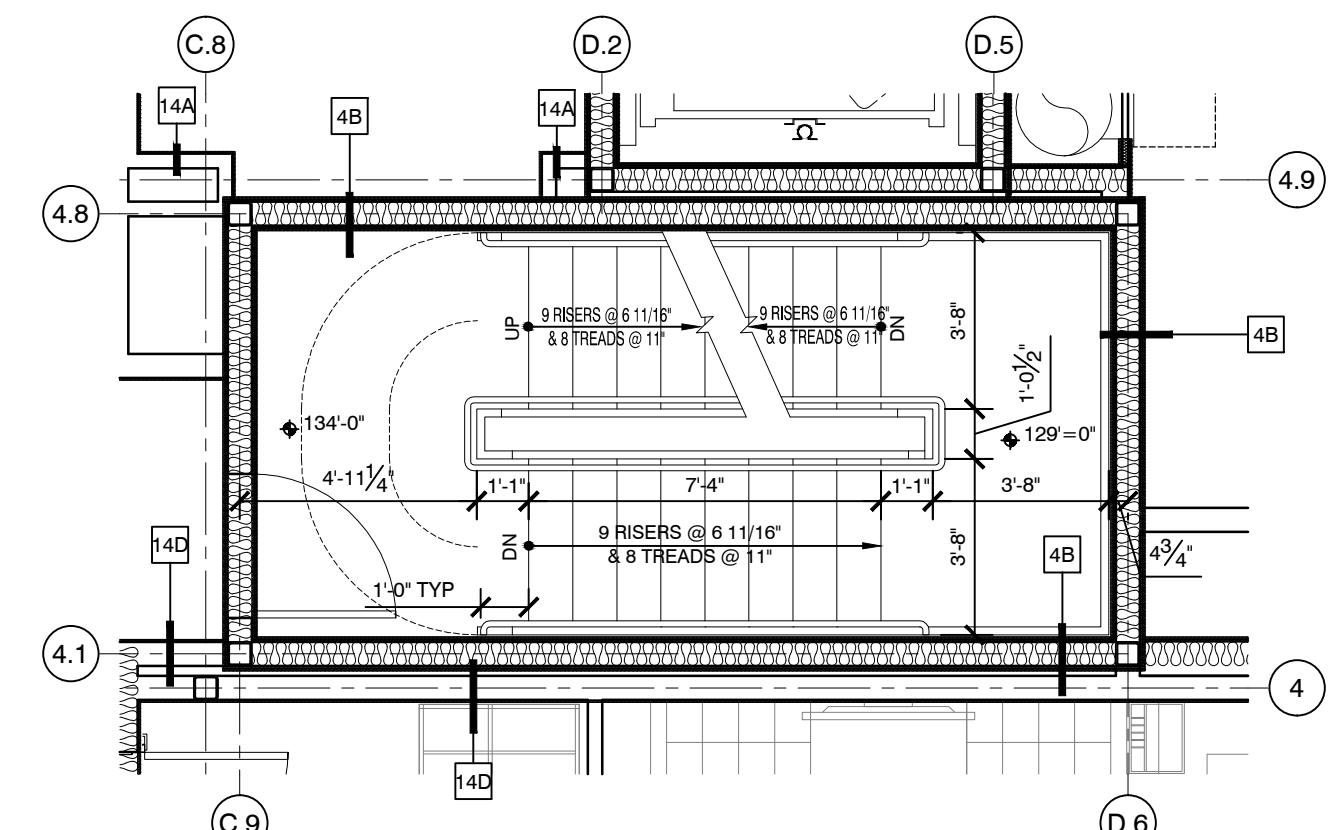


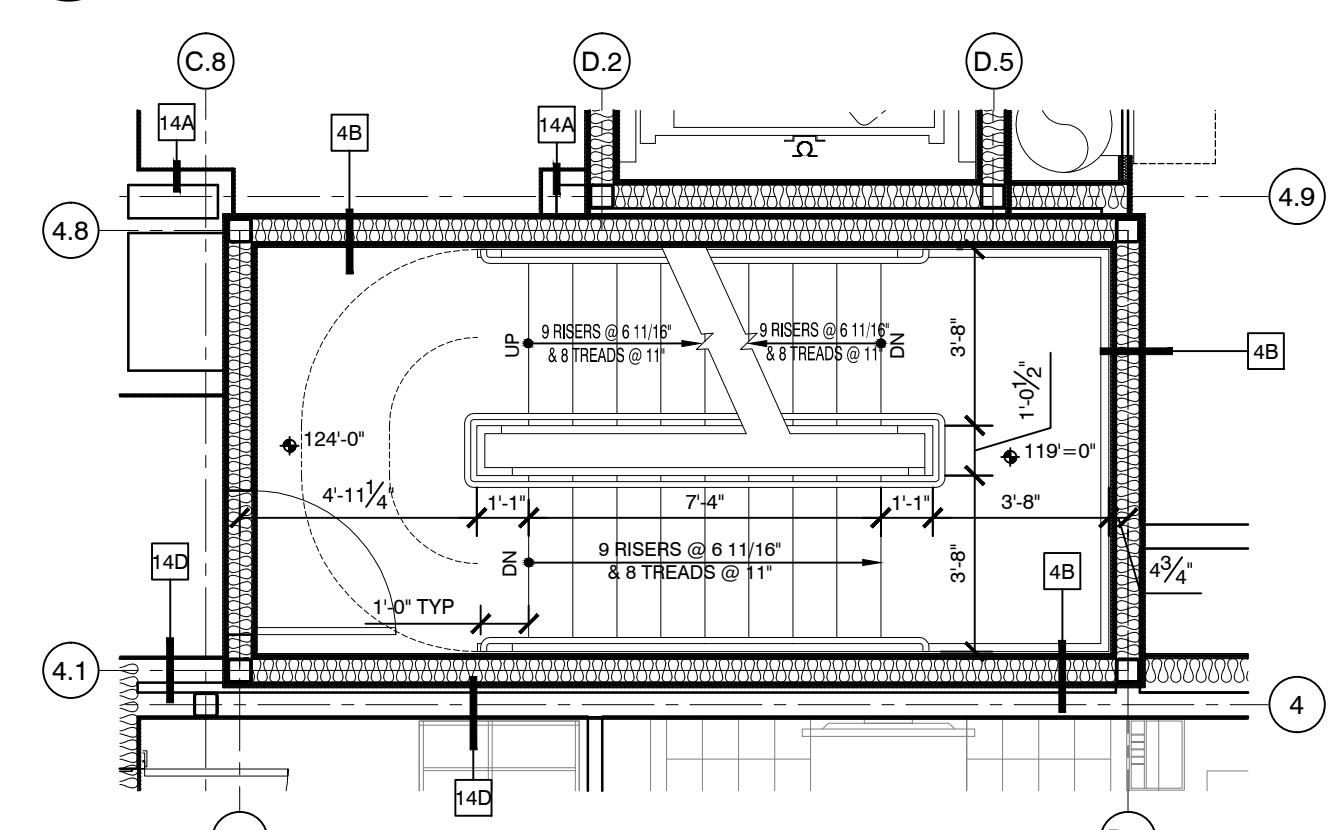
7 STAIR-1 SIXTH FLOOR PLAN
1/4" = 1'-0"



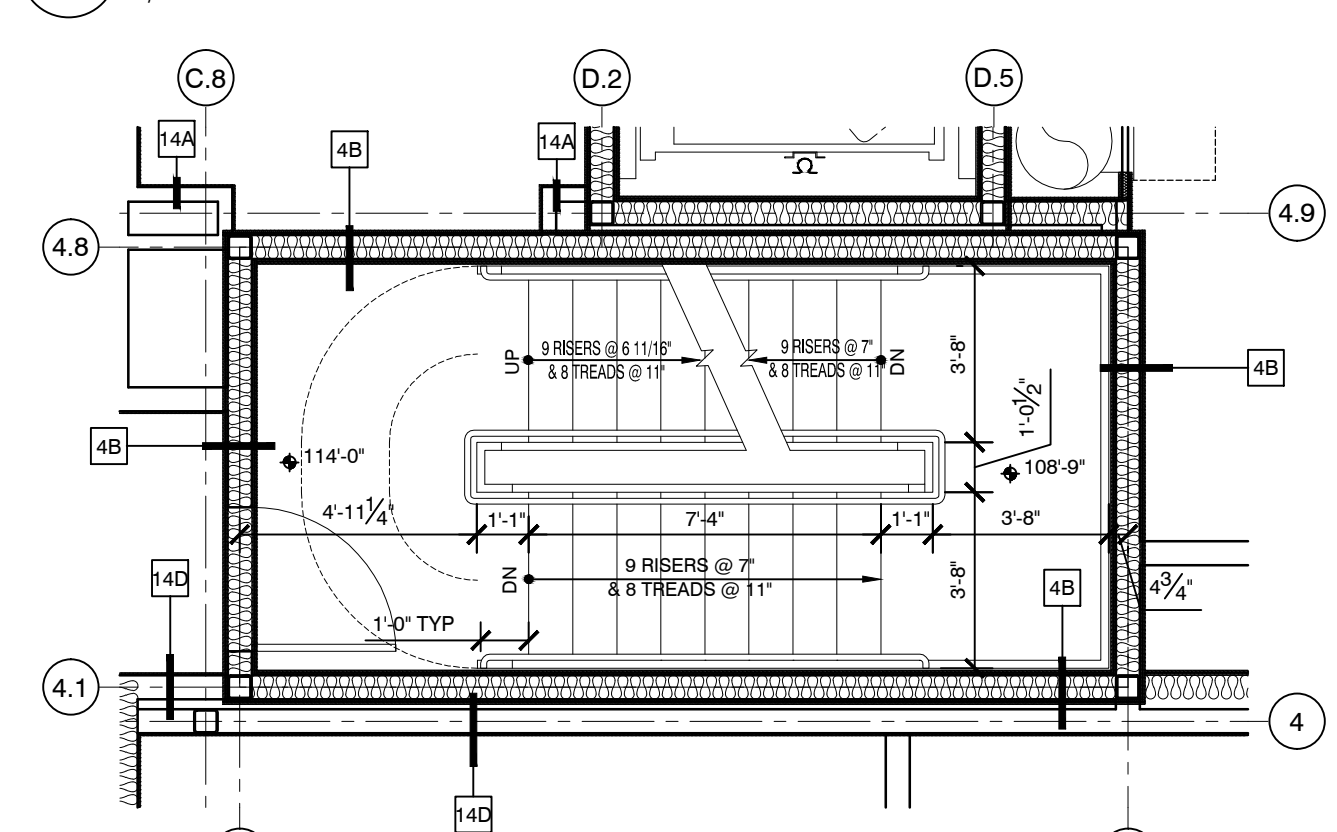
6 STAIR-1 FIFTH FLOOR PLAN
1/4" = 1'-0"



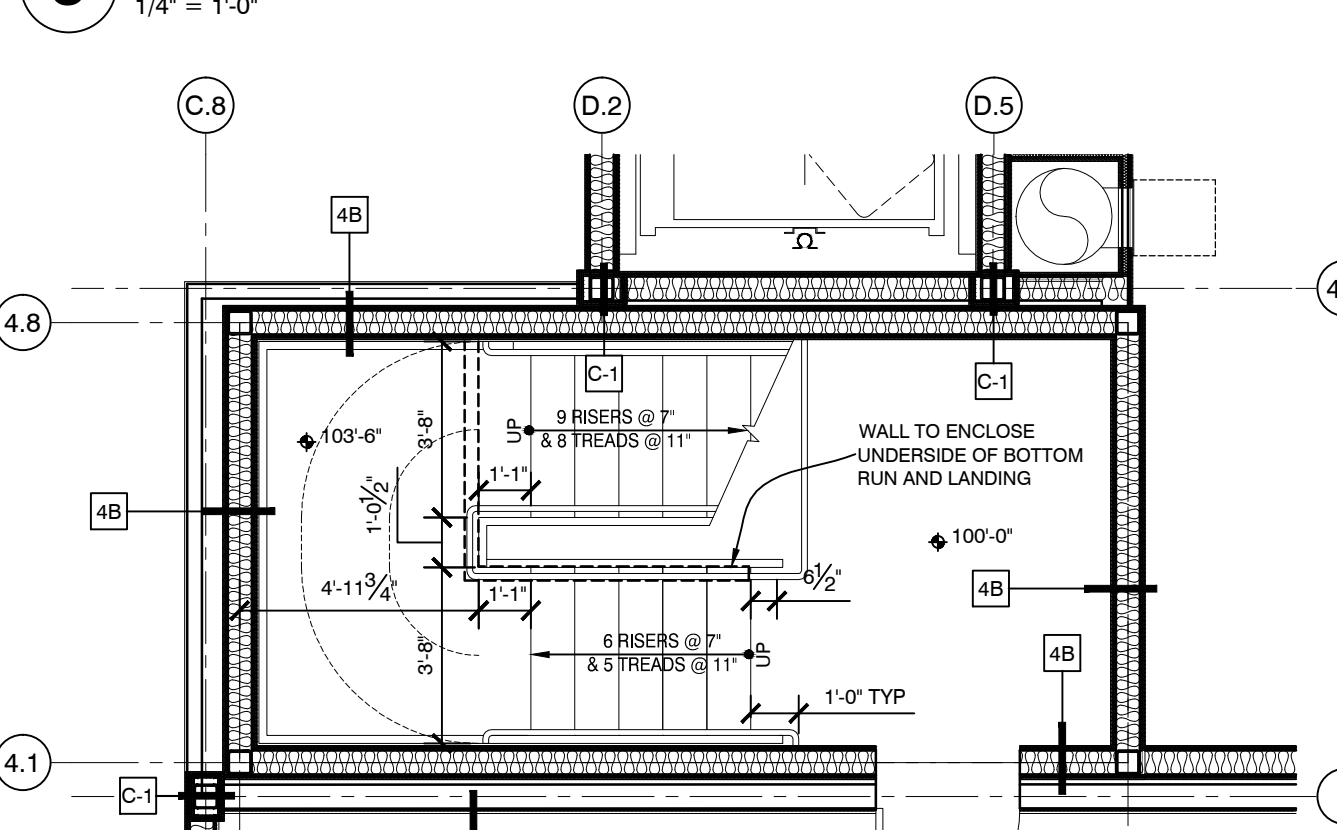
5 STAIR-1 FOURTH FLOOR PLAN
1/4" = 1'-0"



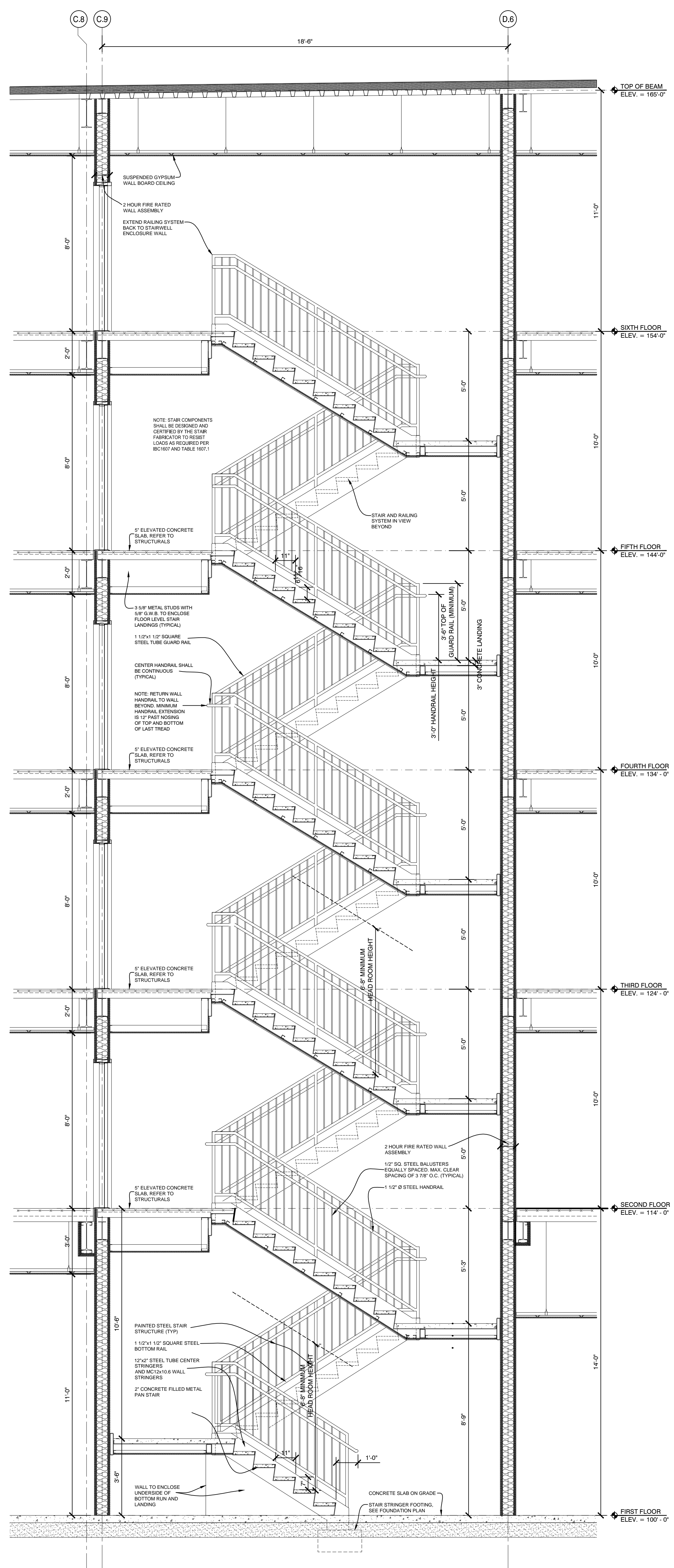
4 STAIR-1 THIRD FLOOR PLAN
1/4" = 1'-0"



3 STAIR-1 SECOND FLOOR PLAN
1/4" = 1'-0"



2 STAIR-1 FIRST FLOOR PLAN
1/4" = 1'-0"



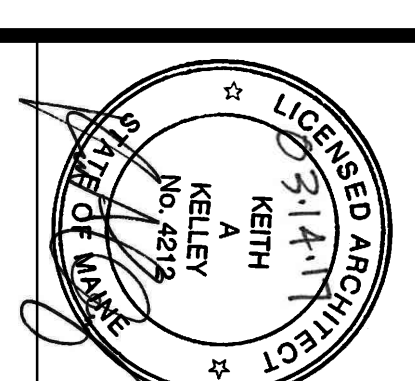
1 STAIR-1 SECTION
3/8" = 1'-0"

STAIR-1 SECTION & PLAN DETAILS
A5.01

ISSUED:
10-18-16 60% MARRIOTT REVIEW
10-21-16 BUILDING SHELL PERMIT
03-14-17 BUILDING PERMIT

REVISION:
11-18-16 WALL TYPE TAGS ADDED
12-23-16 STAIR NOSING NOTE REMOVED

AC HOTELS by MARRIOTT
Fore Street / Hancock Street / Thames Street
Portland, Maine



OPECHEE CONSTRUCTION CORPORATION
11 CORPORATE DRIVE ■ BELMONT ■ NH 03220
PHONE (603) 527-9090 ■ WWW.OPECHEE.COM