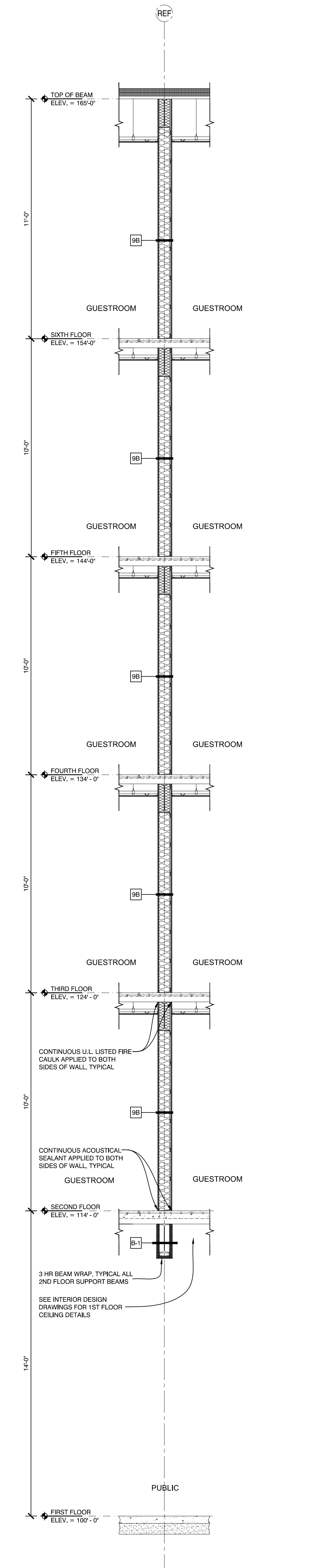


**3** TYPICAL CORRIDOR SECTION  
1/2" = 1'-0"



**38** WALL SECTION @ GUESTROOM DEMISING WALL  
SCALE: 3/8" = 1'-0"

**37** WALL SECTION @ GUESTROOM CORRIDOR  
SCALE: 3/8" = 1'-0"

<p><b>A4.37</b></p> <p>WALL SECTIONS</p>	<p>ISSUED:</p> <p>03-03-17</p> <p>03-14-17 BUILDING PERMIT</p>	<p>REVISION:</p> <p>.</p> <p>.</p> <p>.</p>	<p><b>AC HOTELS by MARRIOTT</b></p> <p>Fore Street / Hancock Street / Thames Street Portland, Maine</p>		<p>11 CORPORATE DRIVE ■ BELMONT ■ NH 03220 PHONE (603) 527-9090 ■ WWW.OPECHEE.COM</p>
	<p>Project Architect: KAK</p> <p>Drawn by: DLS</p>	<p>Project Architect: KAK</p> <p>Drawn by: DLS</p>			