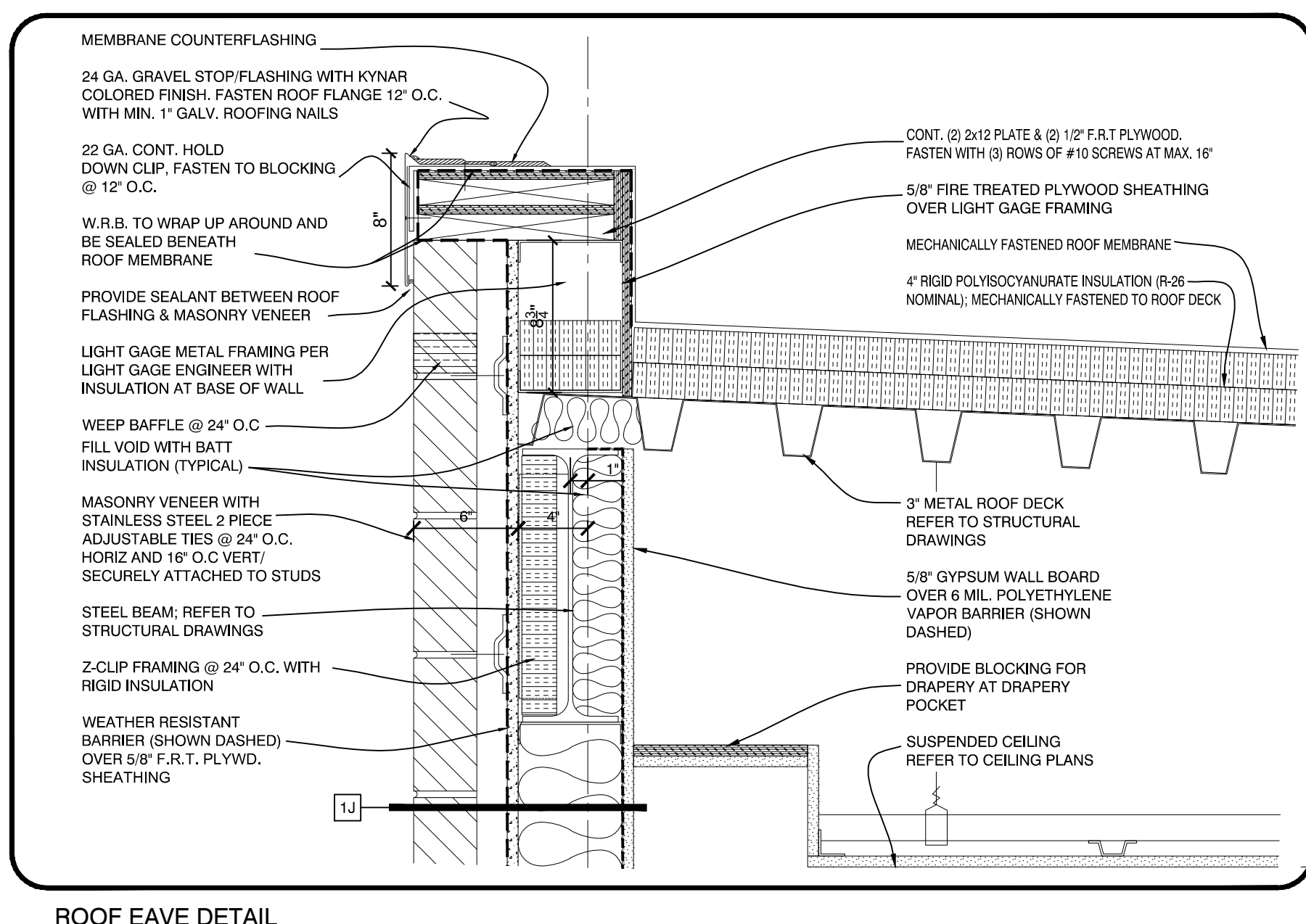
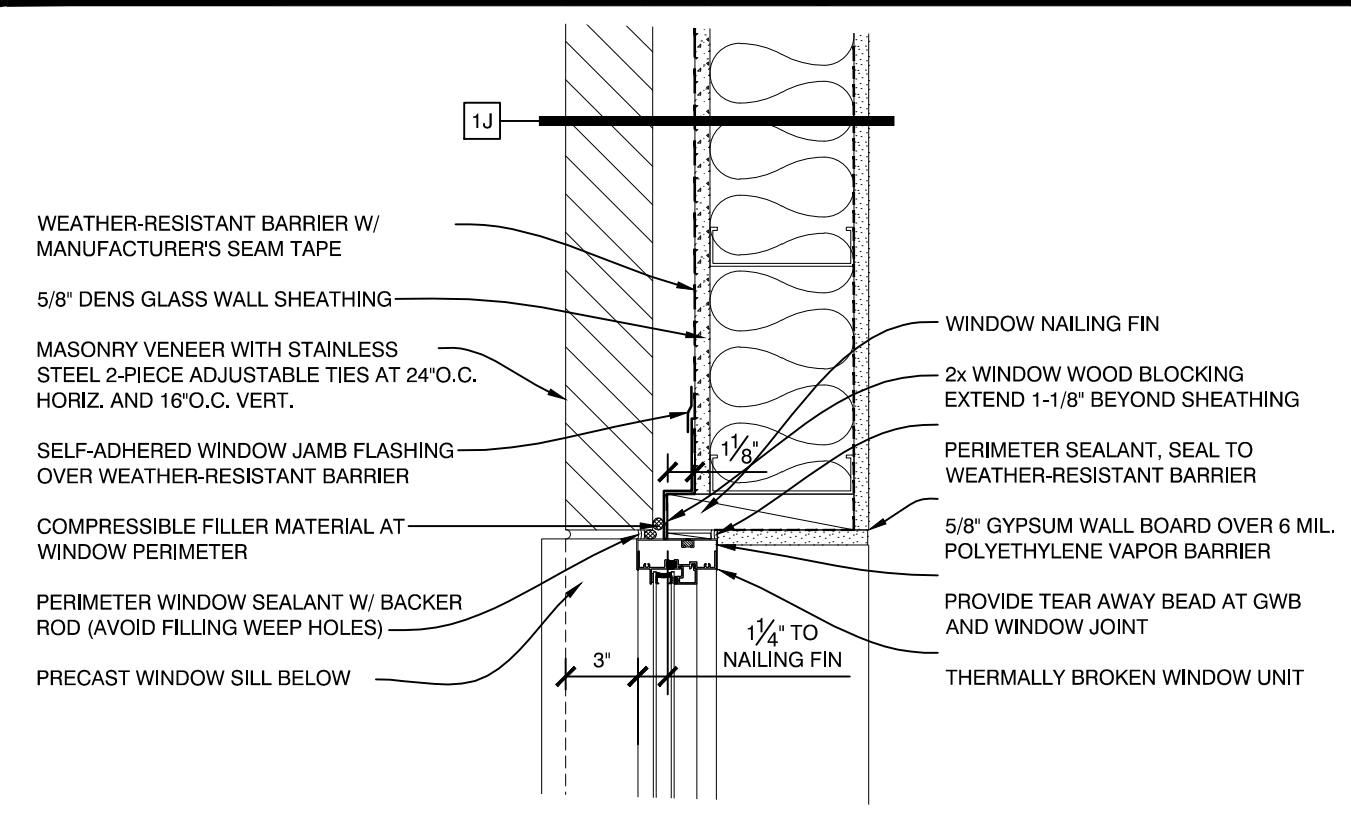


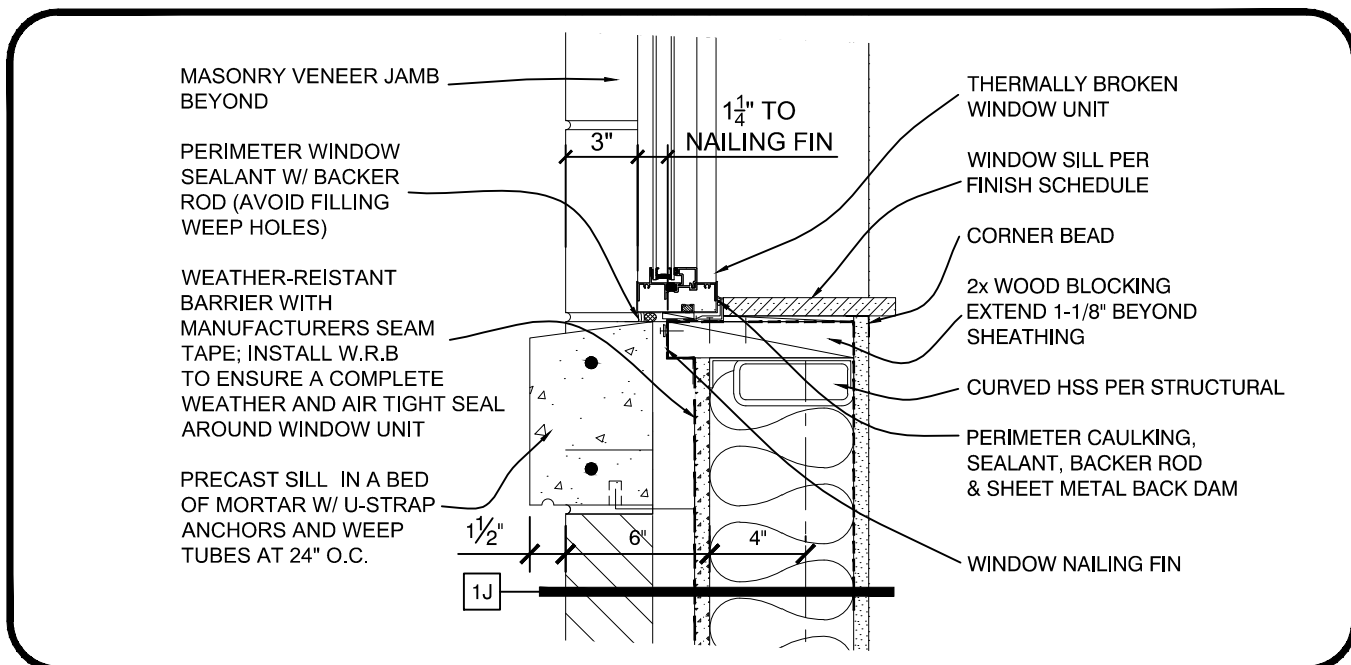
**WINDOW HEAD DETAIL**  
SCALE: 1 1/2" = 1'-0"



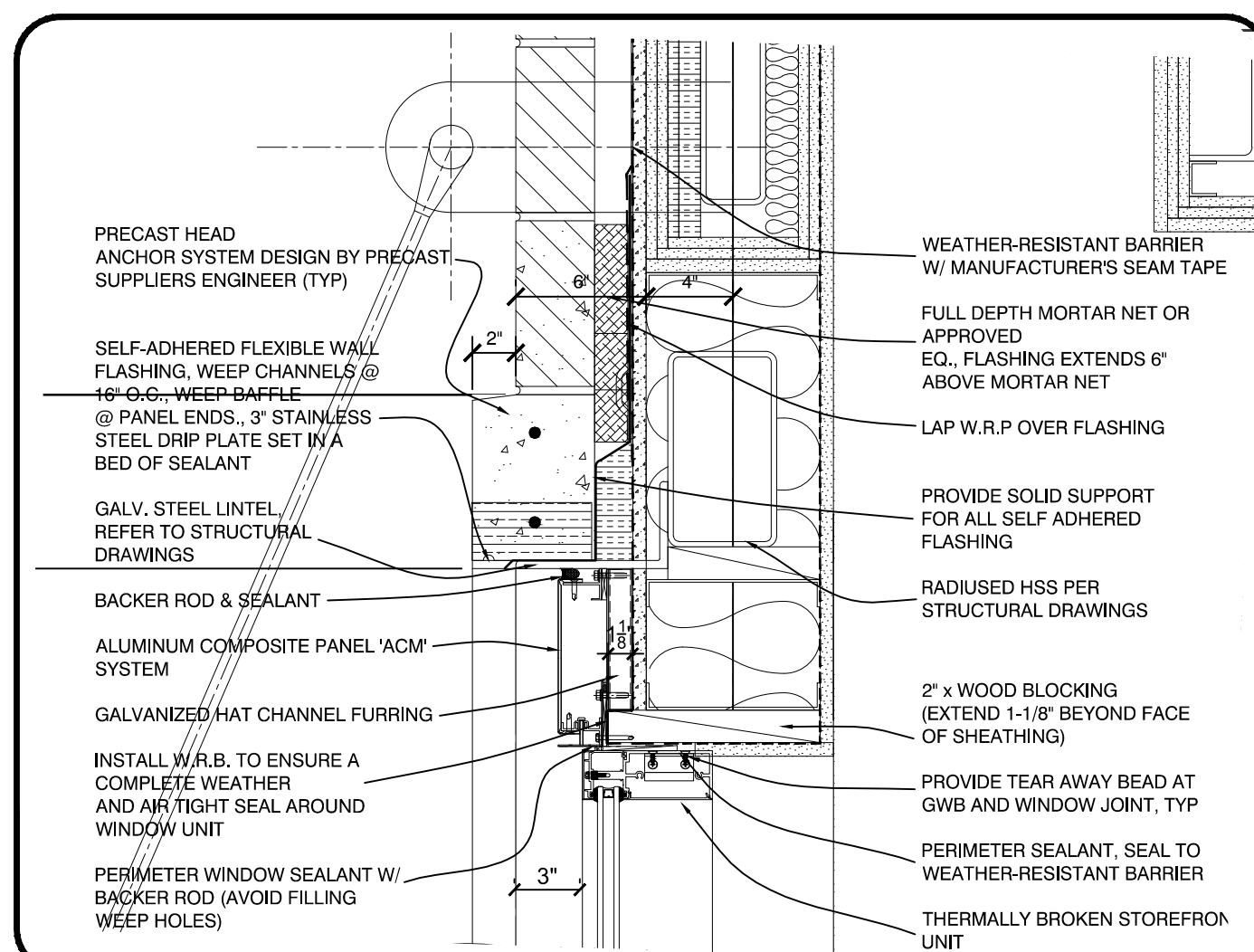
**ROOF EAVE DETAIL**  
SCALE: 1 1/2" = 1'-0"



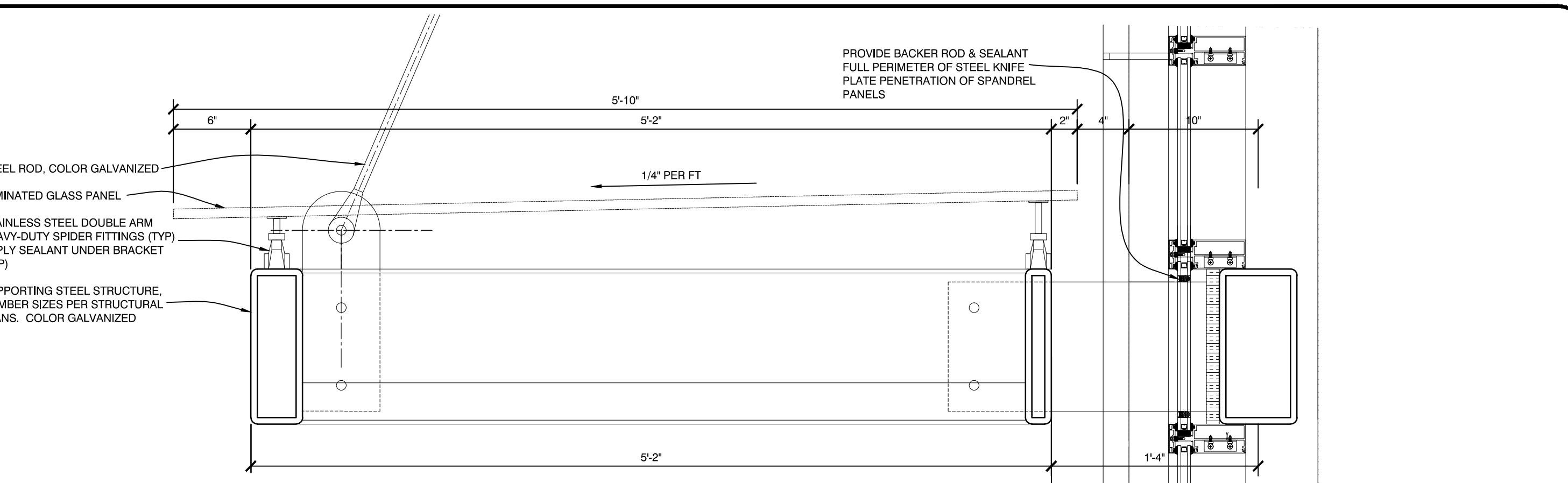
**WINDOW JAMB DETAIL**  
SCALE: 1 1/2" = 1'-0"



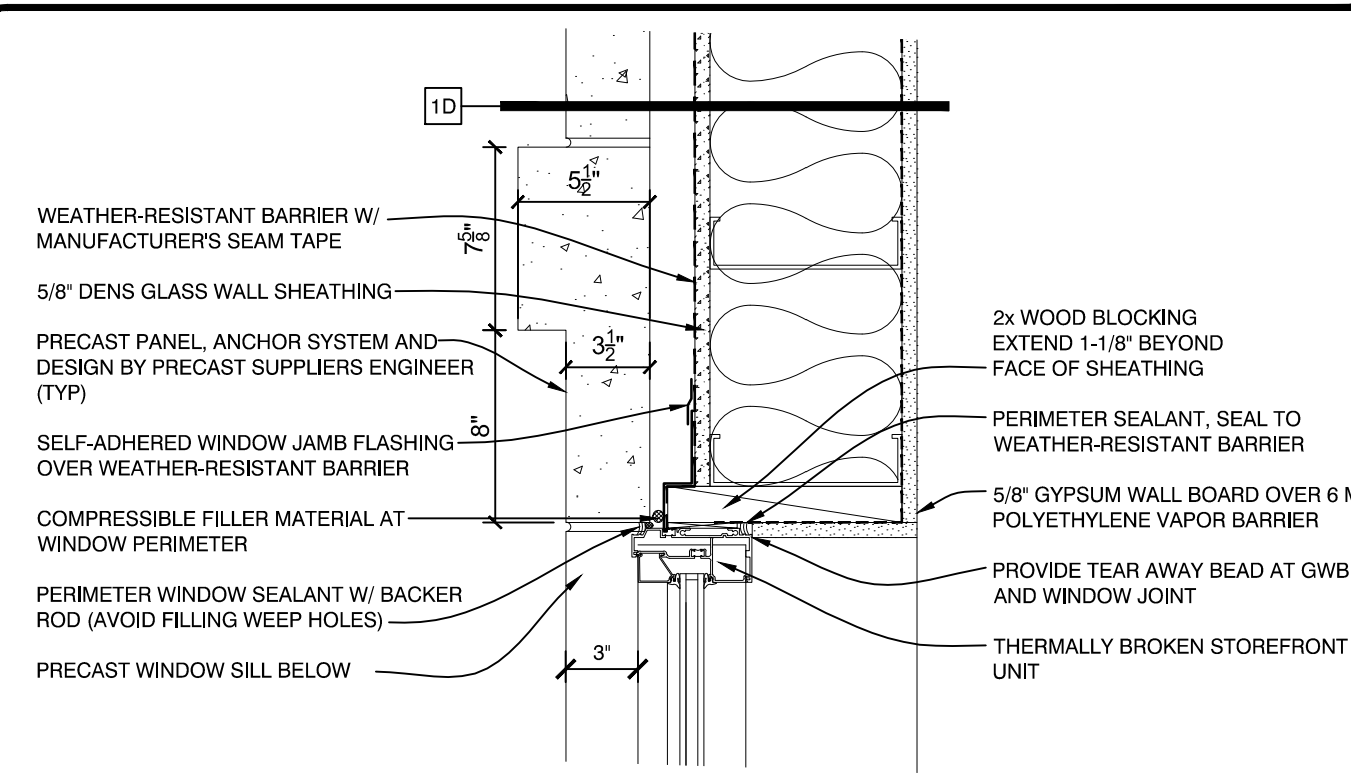
**WINDOW SILL DETAIL**  
SCALE: 1 1/2" = 1'-0"



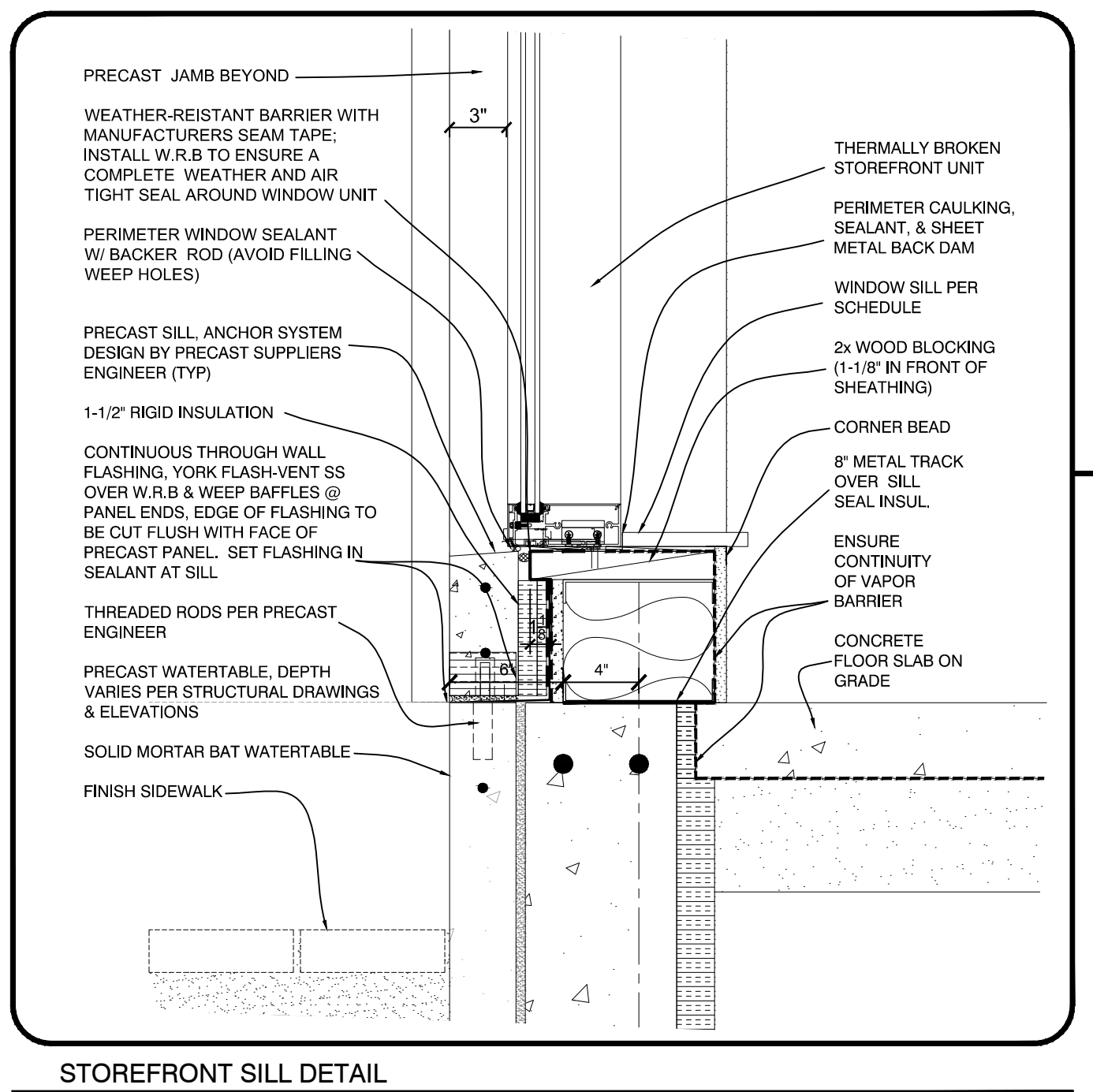
**STOREFRONT HEAD DETAIL**  
SCALE: 1 1/2" = 1'-0"



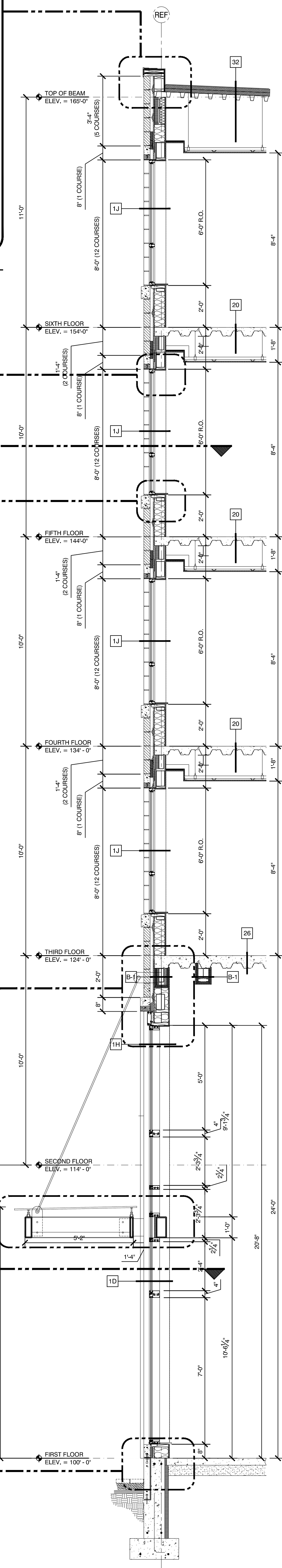
**CANOPY DETAIL**  
SCALE: 1 1/2" = 1'-0"



**STOREFRONT JAMB DETAIL**  
SCALE: 1 1/2" = 1'-0"



**STOREFRONT SILL DETAIL**  
SCALE: 1 1/2" = 1'-0"



**28 WALL SECTION**  
SCALE: 3/8" = 1'-0"

<p>sheet number <b>A4.28</b></p>	<p><b>WALL SECTIONS</b></p>	<p>Project architect: <b>KAK</b> drawn by: <b>DLS</b></p>	<p><b>ISSUED:</b> 01-27-17 DETAILS ADDED 03-14-17 BUILDING PERMIT</p>	<p><b>REVISION:</b> 02-17-17 DETAILS UPDATED 03-03-17 DETAILS/DIMENSIONS UPDATED</p>	<p><b>AC HOTELS by MARRIOTT</b>  Fore Street / Hancock Street / Thames Street Portland, Maine</p>		<p><b>OPEECHEE</b> CONSTRUCTION CORPORATION</p> <p>11 CORPORATE DRIVE ■ BELMONT ■ NH 03220 PHONE (603) 527-9090 ■ WWW.OPEECHEE.COM</p>
--------------------------------------	-----------------------------	---	---	--	---	--	--