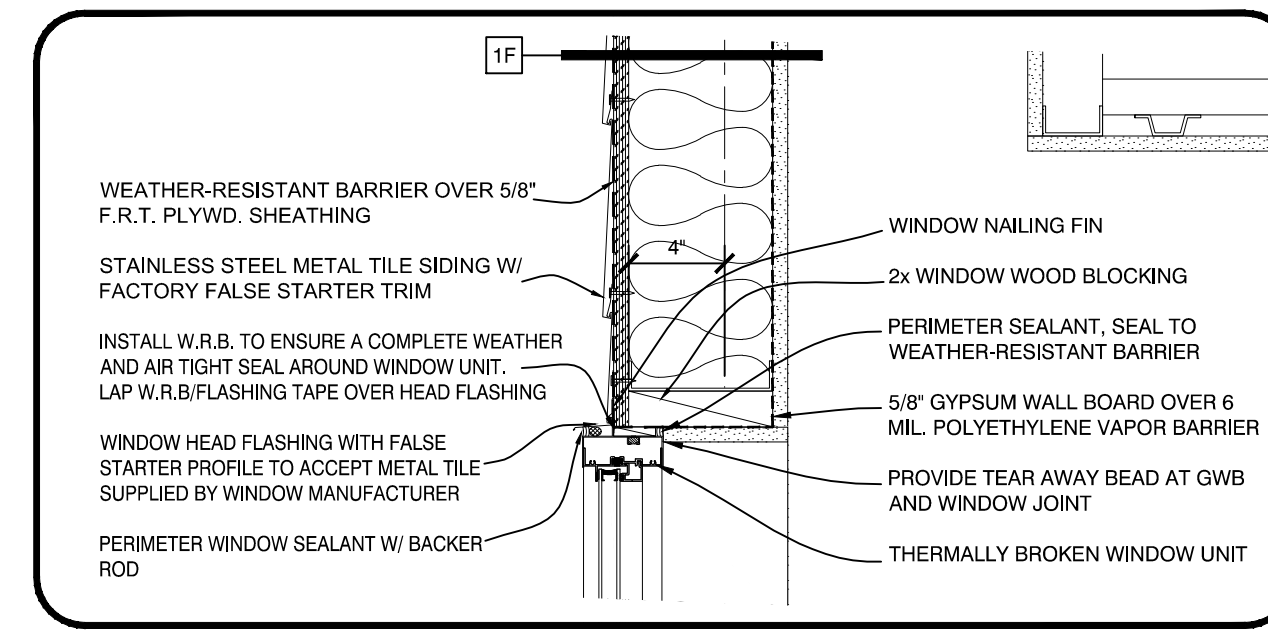
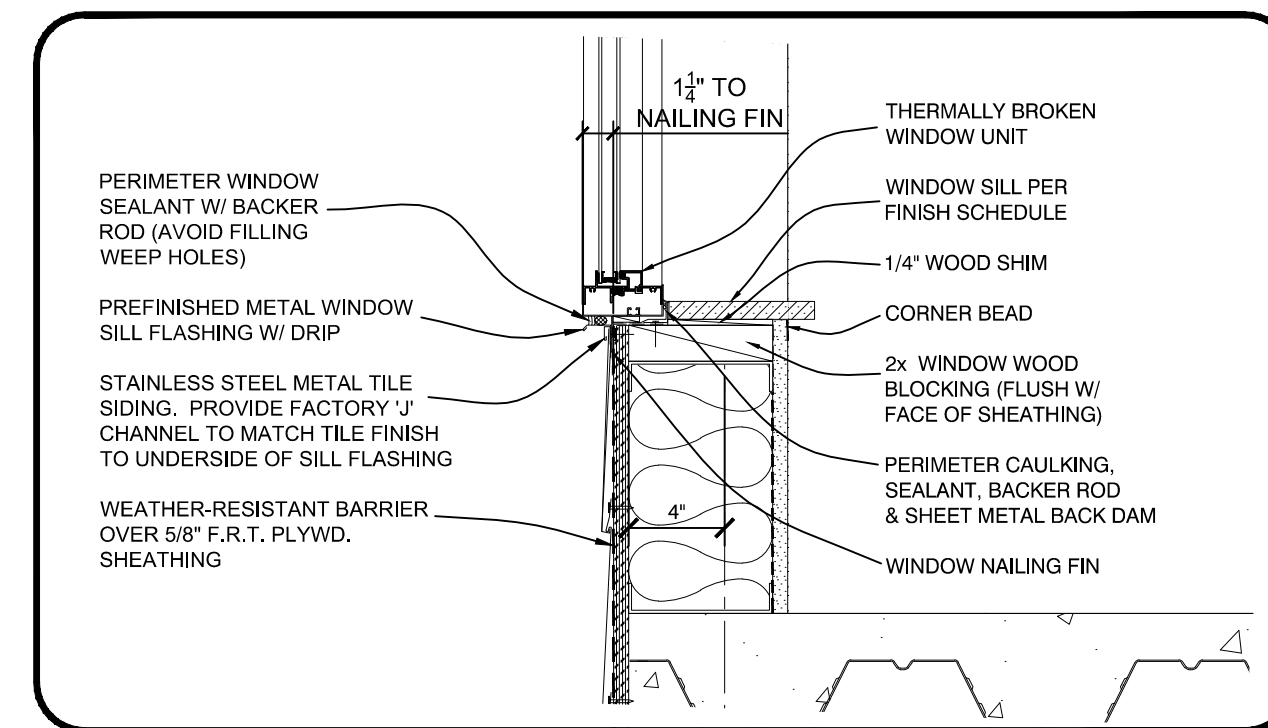


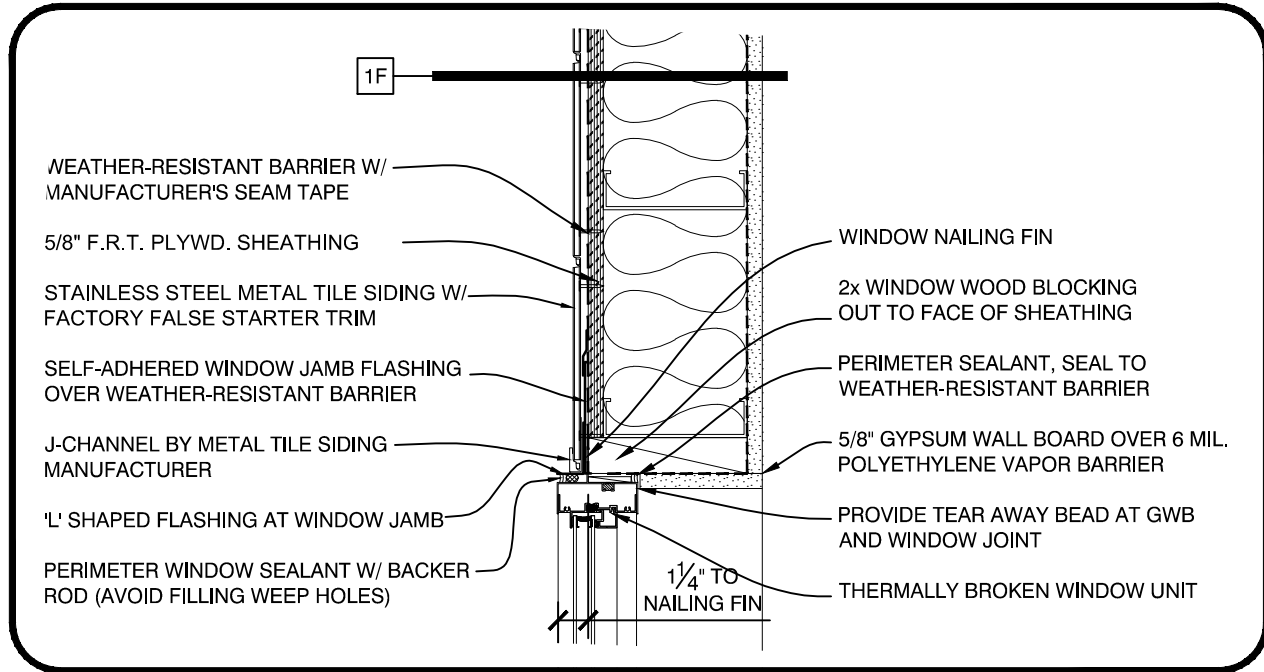
**ROOF EAVE DETAIL**  
SCALE: 1 1/2" = 1'-0"



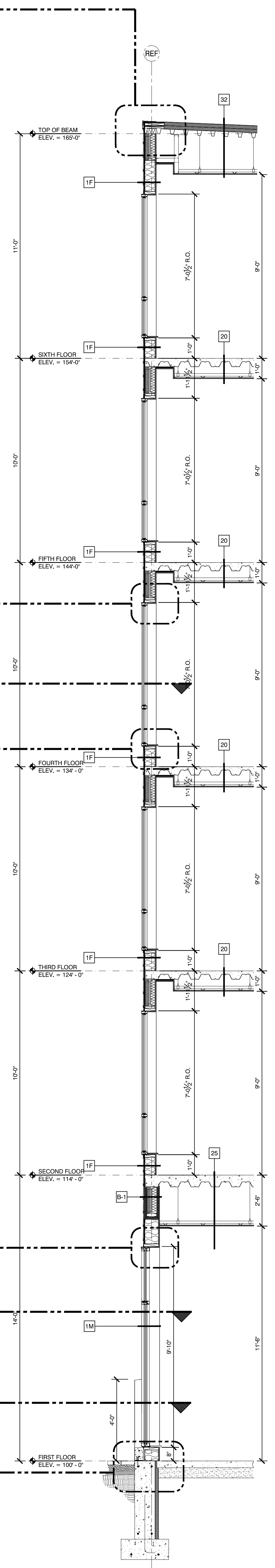
**WINDOW HEAD DETAIL**  
SCALE: 1 1/2" = 1'-0"



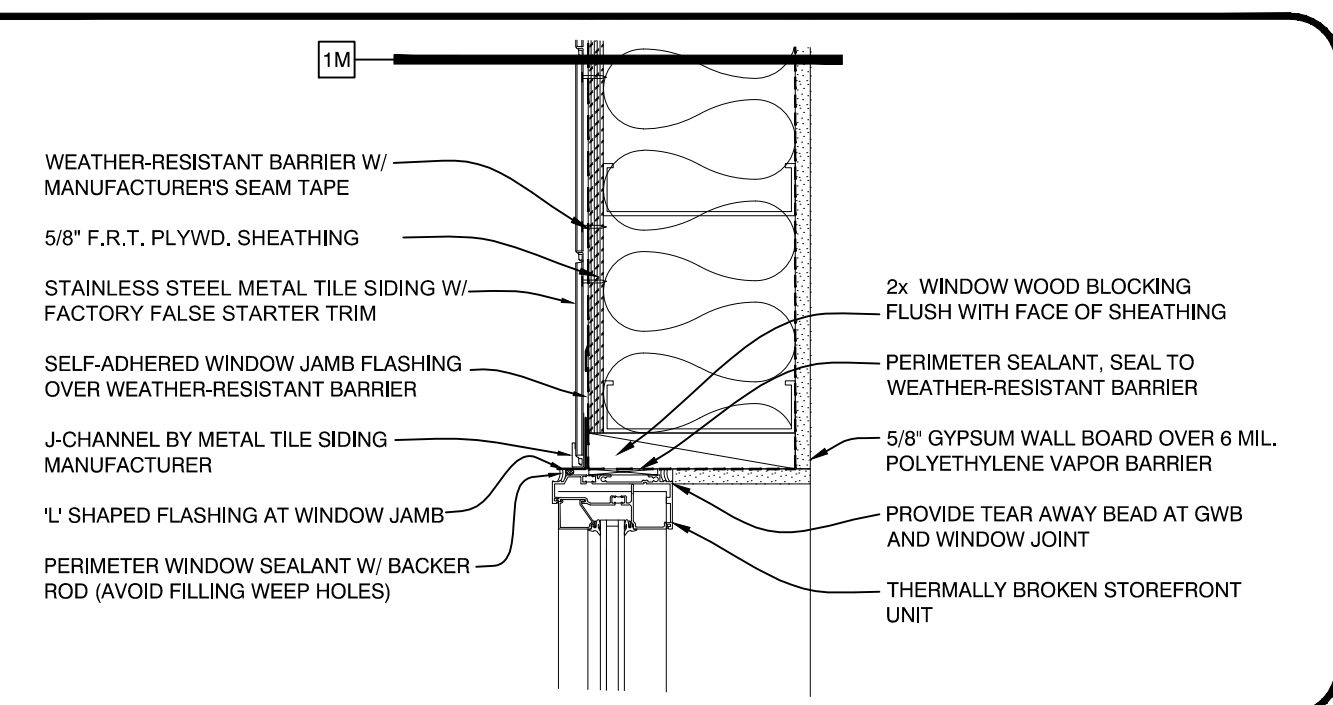
**WINDOW SILL DETAIL**  
SCALE: 1 1/2" = 1'-0"



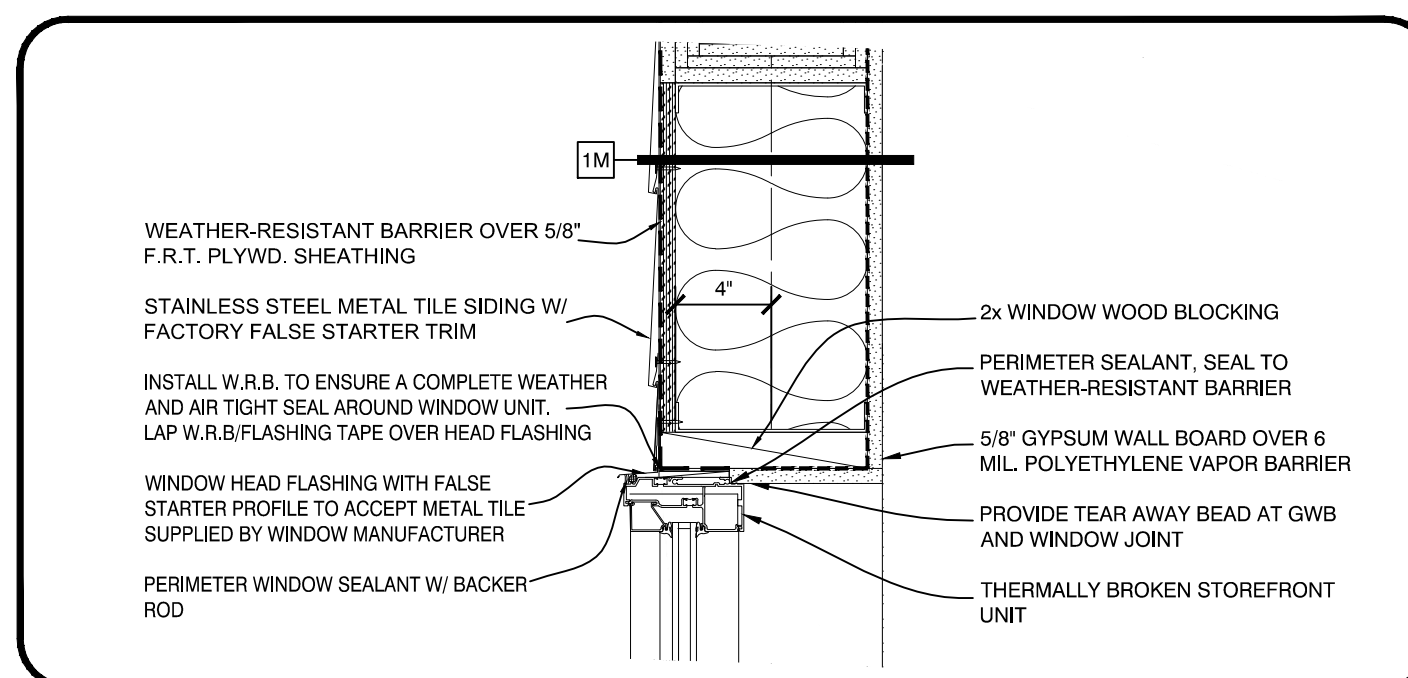
**WINDOW JAMB DETAIL**  
SCALE: 1 1/2" = 1'-0"



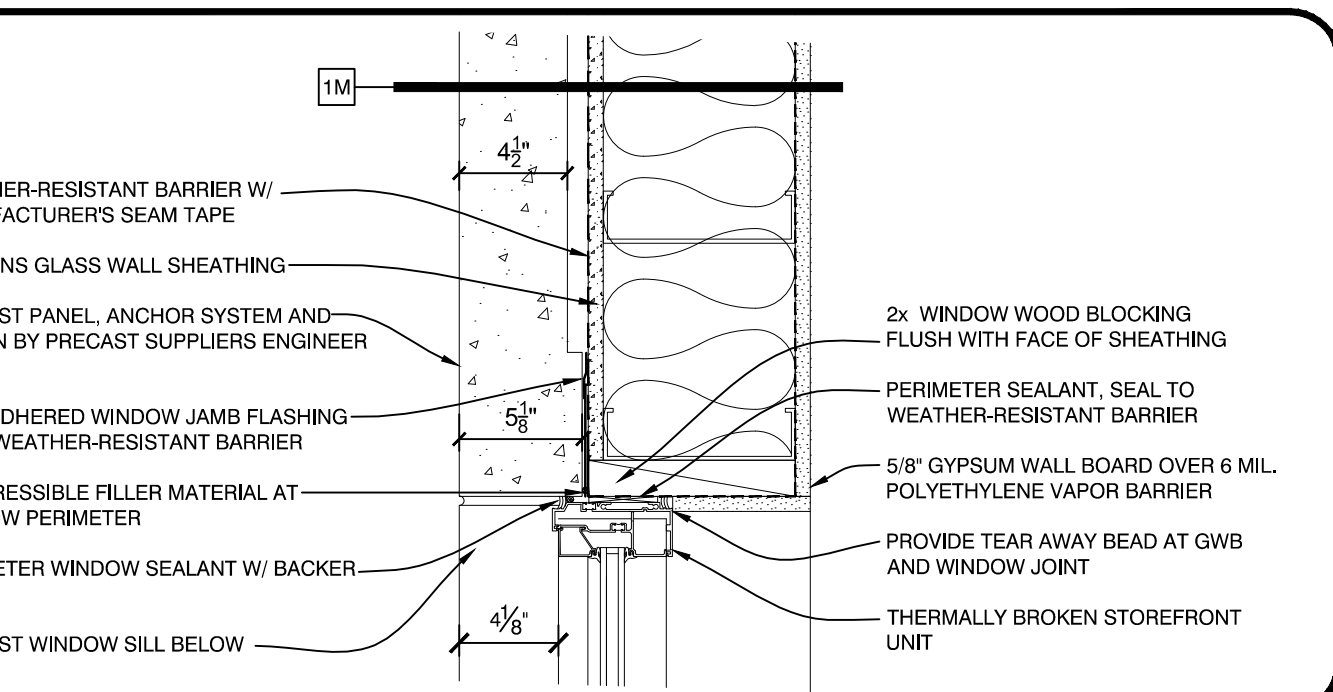
**21 WALL SECTION**  
SCALE: 3/8" = 1'-0"



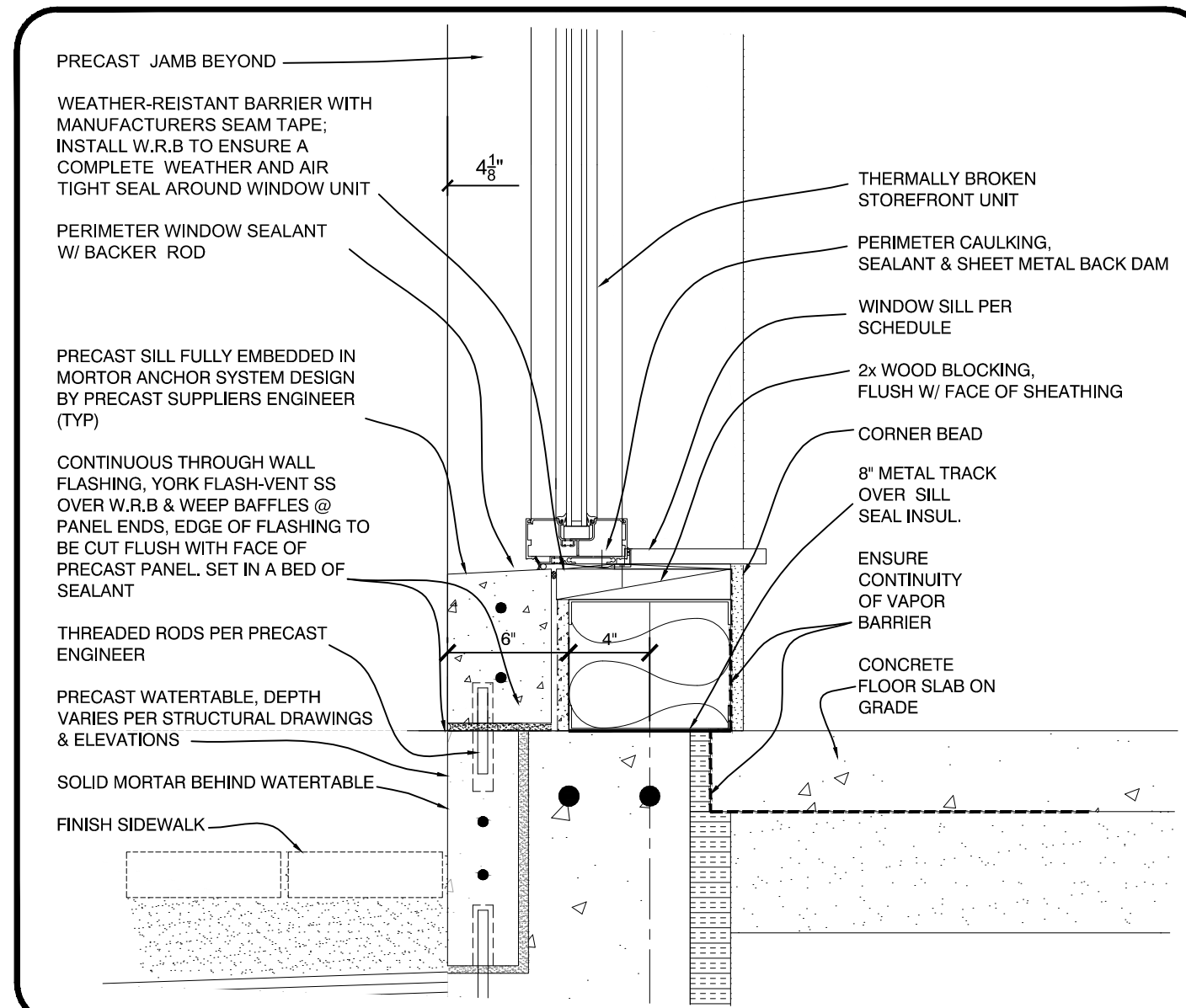
**STOREFRONT JAMB @ METAL TILE DETAIL**  
SCALE: 1 1/2" = 1'-0"



**STOREFRONT HEAD DETAIL**  
SCALE: 1 1/2" = 1'-0"



**STOREFRONT JAMB @ PRECAST DETAIL**  
SCALE: 1 1/2" = 1'-0"



**STOREFRONT SILL DETAIL**  
SCALE: 1 1/2" = 1'-0"

<p>Sheet Number <b>A4.21</b></p> <p>WALL SECTIONS</p>	<p>Project Architect: <b>KAK</b> Drawn by: <b>DLS</b></p>	<p>ISSUED:</p> <p>10-18-16 60% MARRIOTT REVIEW 10-21-16 BUILDING SHELL PERMIT 01-27-17 DETAILS ADDED 03-14-17 BUILDING PERMIT</p>	<p>REVISION:</p> <p>11-23-16 ASSEMBLY TAGS ADDED 02-17-17 DETAILS UPDATED 03-03-17 DETAILS/DIMENSIONS UPDATED</p>	<p><b>AC HOTELS by MARRIOTT</b></p> <p>Fore Street / Hancock Street / Thames Street Portland, Maine</p>		<p>11 CORPORATE DRIVE • BELMONT • NH 03220 PHONE (603) 527-9090 • WWW.OPEECHEE.COM</p>
		<p>ISSUED:</p> <p>10-18-16 60% MARRIOTT REVIEW 10-21-16 BUILDING SHELL PERMIT 01-27-17 DETAILS ADDED 03-14-17 BUILDING PERMIT</p>		<p>REVISION:</p> <p>11-23-16 ASSEMBLY TAGS ADDED 02-17-17 DETAILS UPDATED 03-03-17 DETAILS/DIMENSIONS UPDATED</p>		