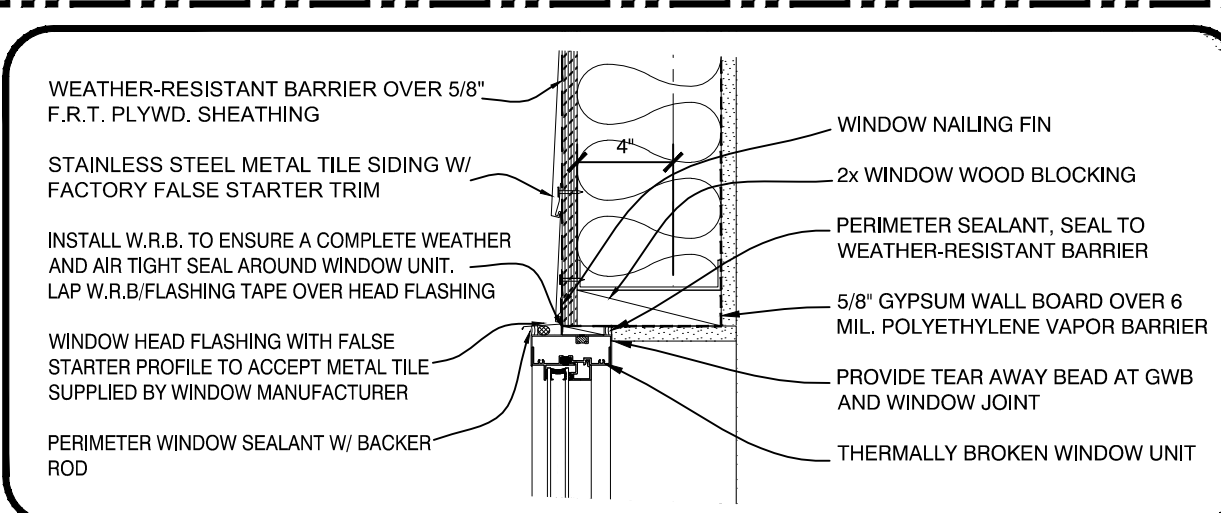
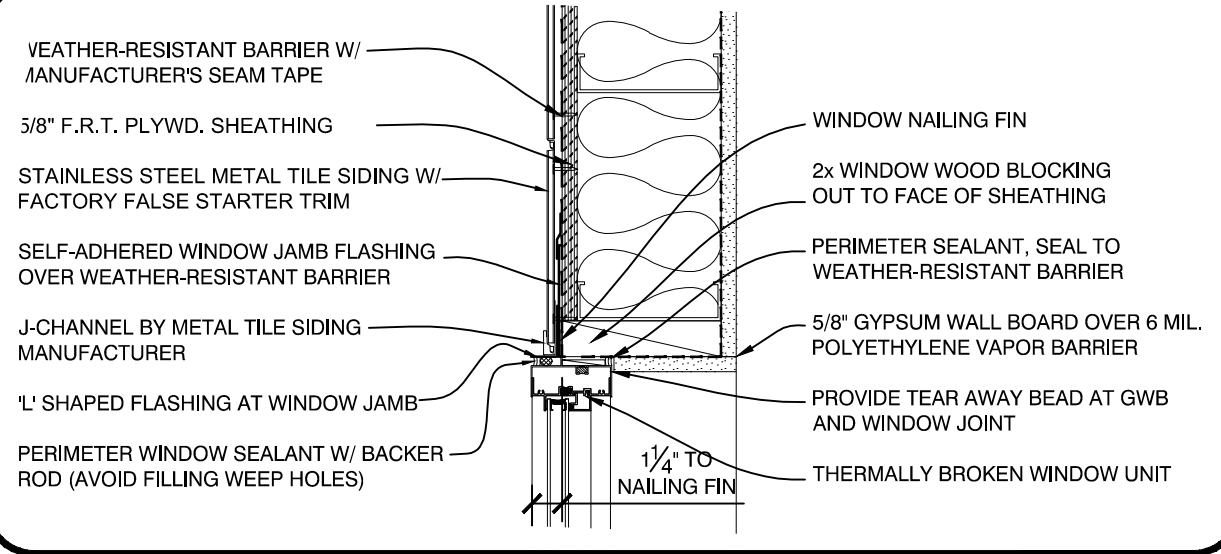


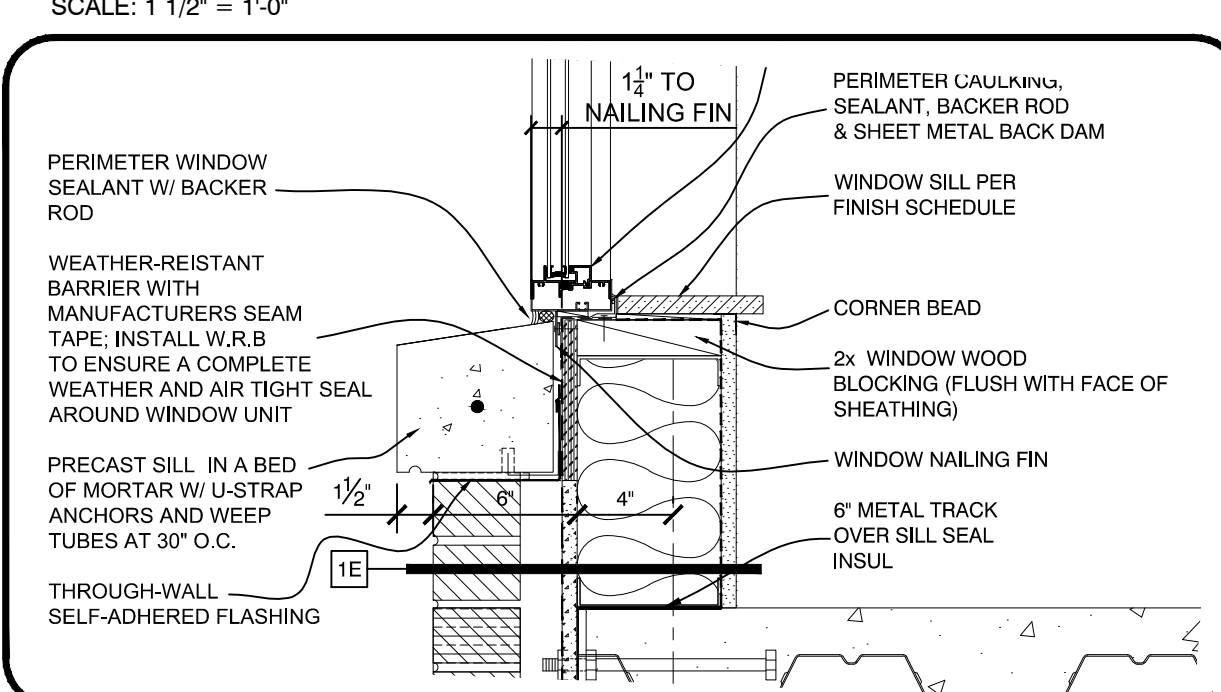
ROOF CORNICE EAVE DETAIL
SCALE: 1 1/2" = 1'-0"



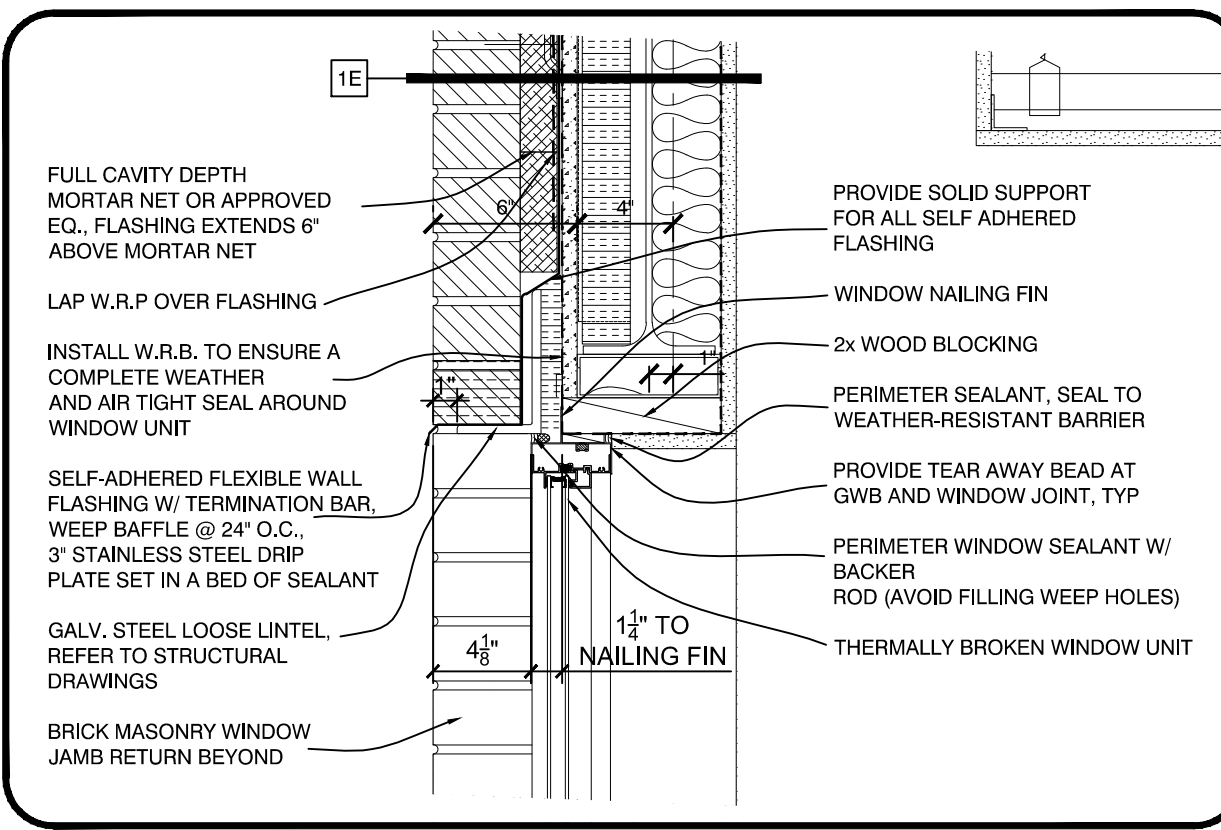
WINDOW HEAD DETAIL
SCALE: 1 1/2" = 1'-0"



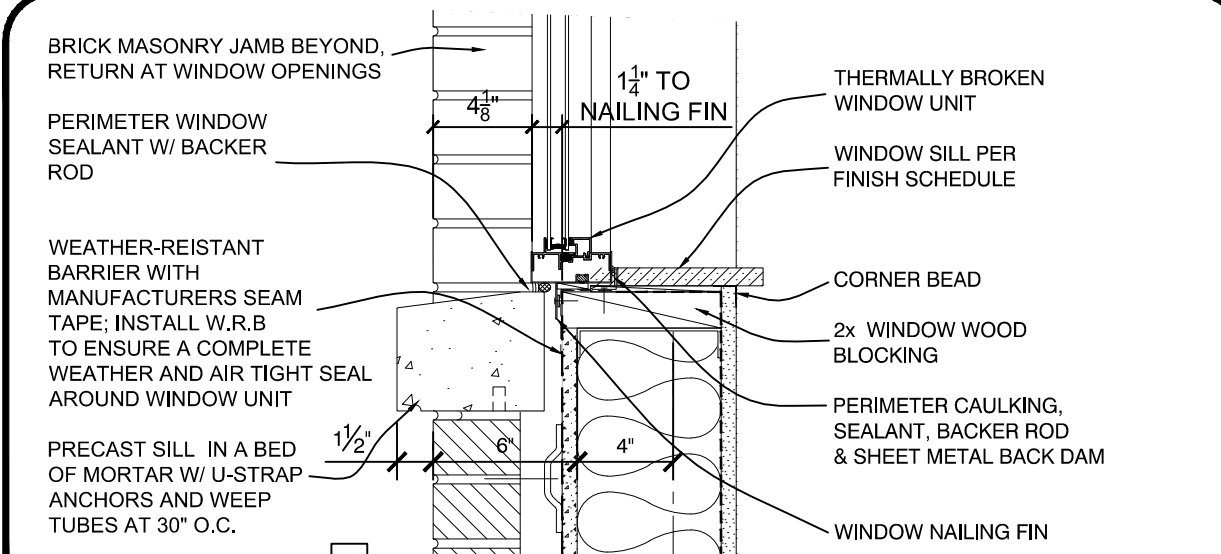
WINDOW JAMB DETAIL
SCALE: 1 1/2" = 1'-0"



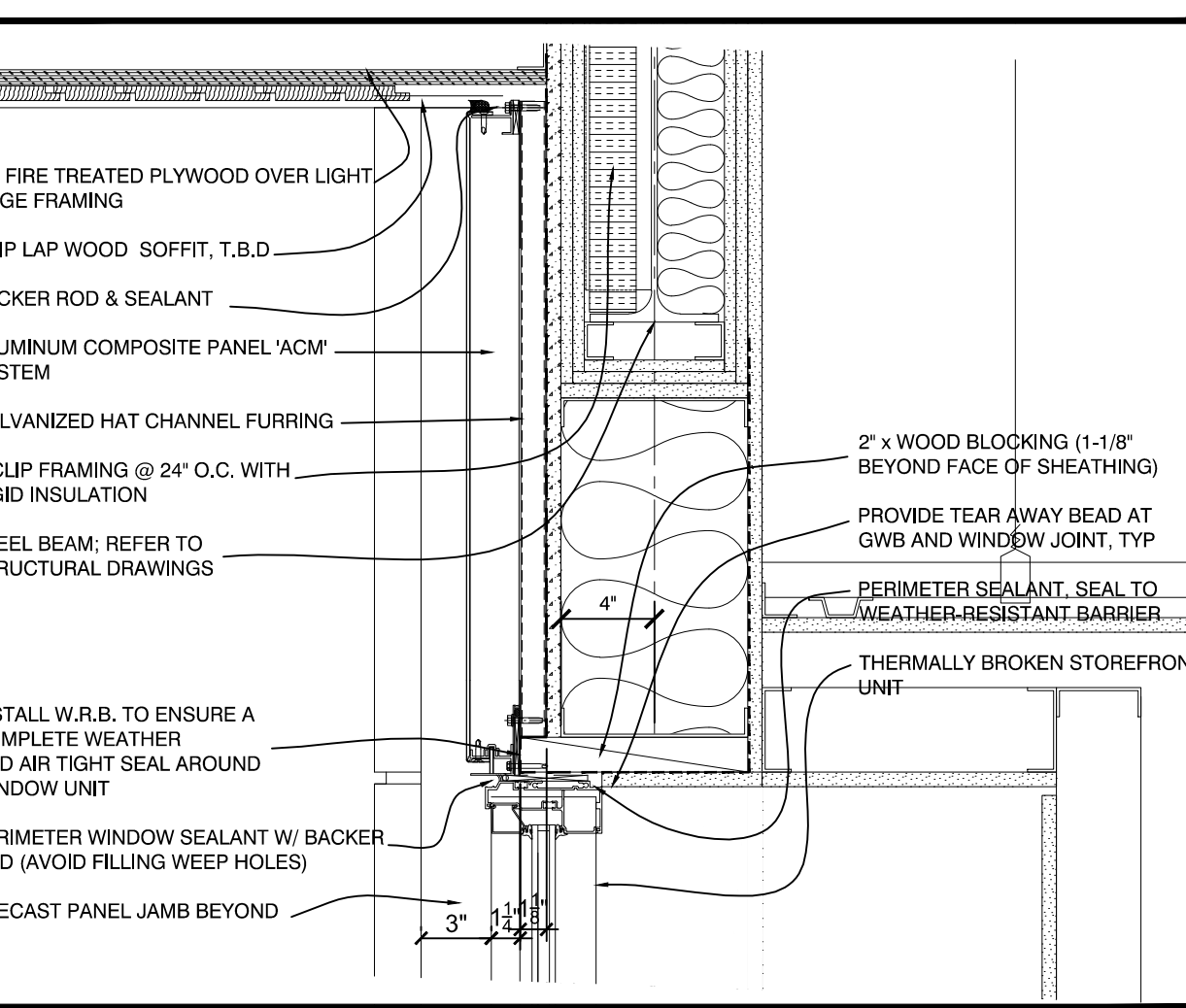
WINDOW SILL DETAIL
SCALE: 1 1/2" = 1'-0"



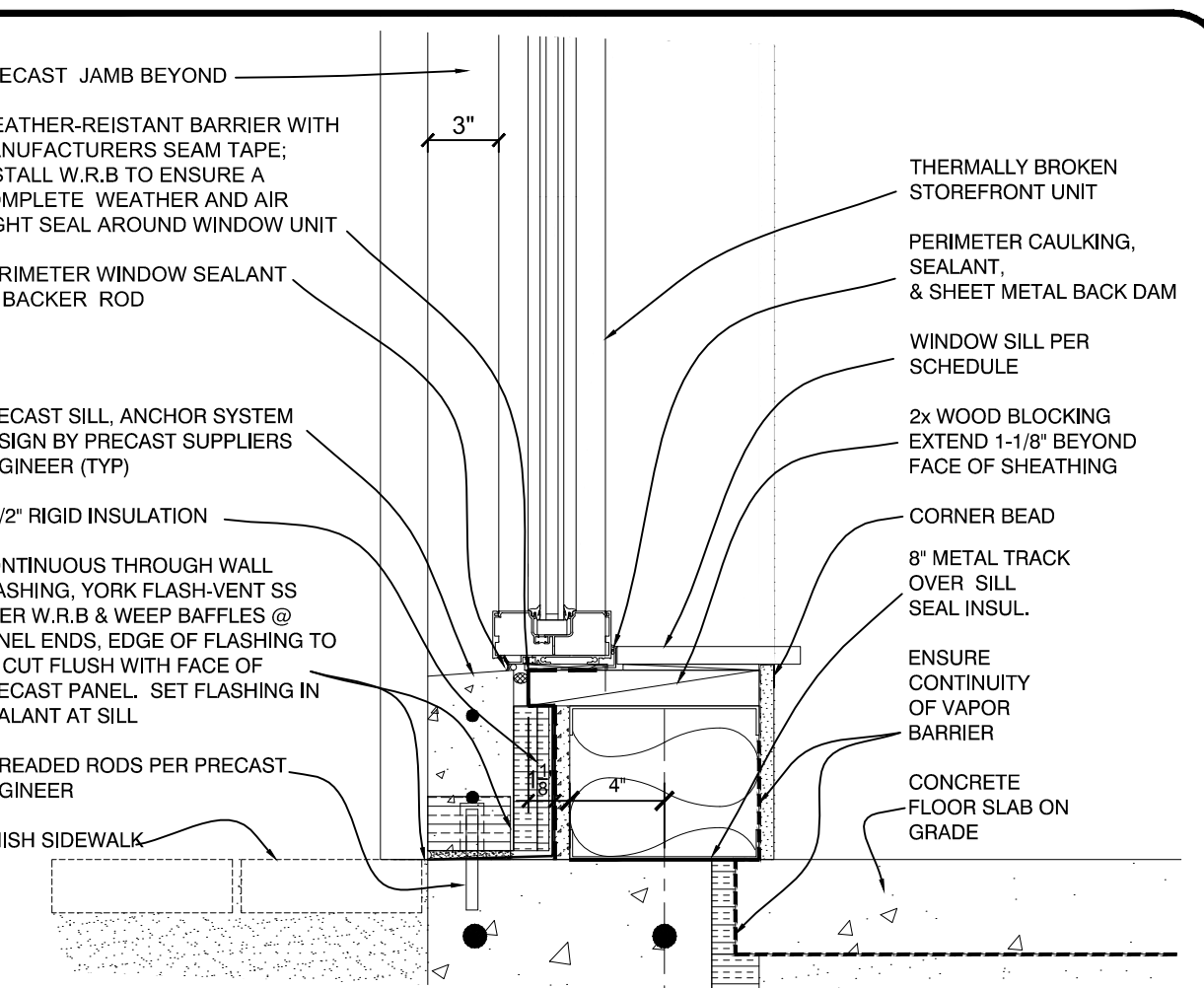
WINDOW HEAD DETAIL
SCALE: 1 1/2" = 1'-0"



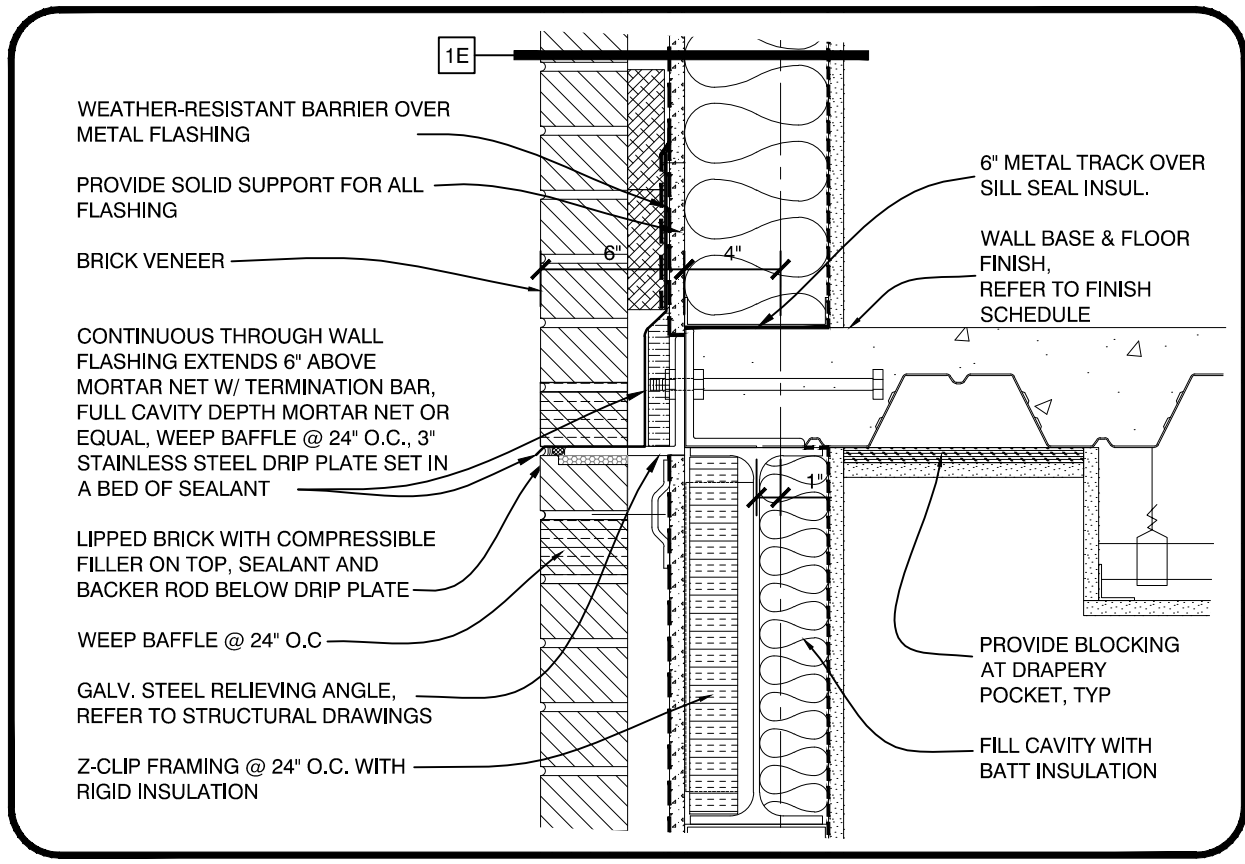
WINDOW SILL DETAIL
SCALE: 1 1/2" = 1'-0"



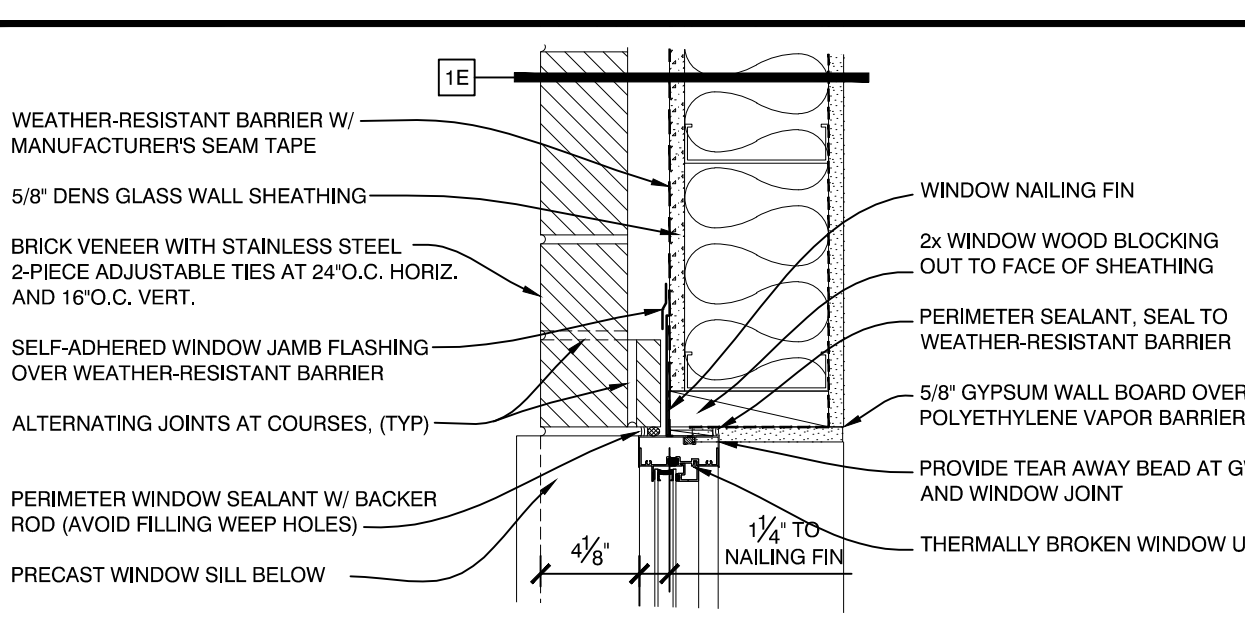
STOREFRONT HEAD DETAIL
SCALE: 1 1/2" = 1'-0"



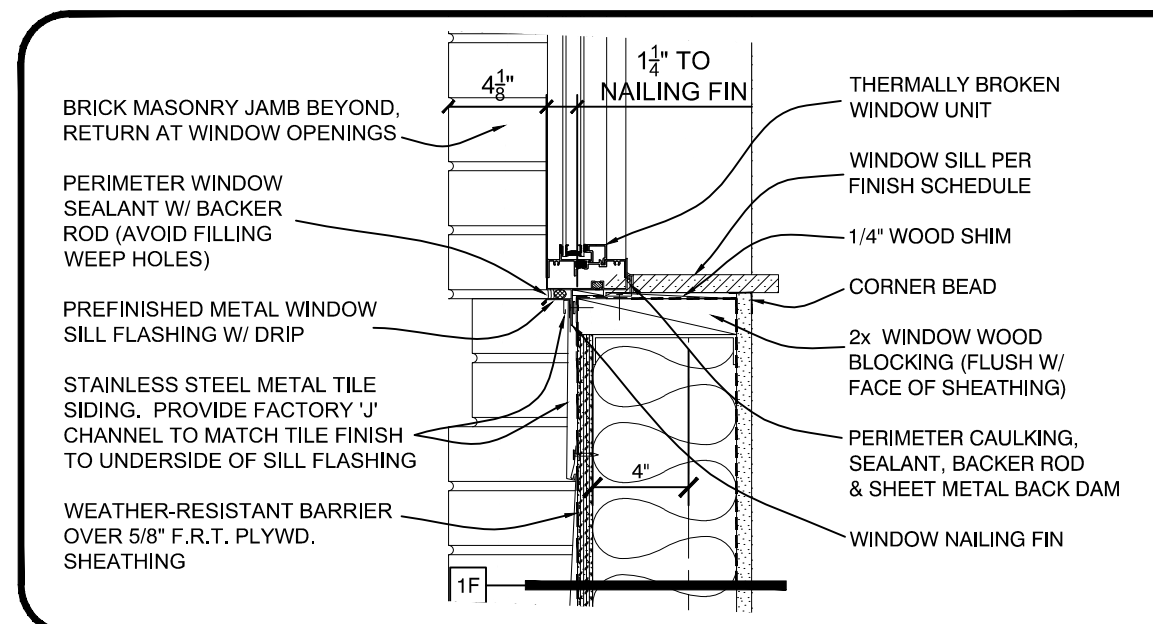
STOREFRONT SILL DETAIL
SCALE: 1 1/2" = 1'-0"



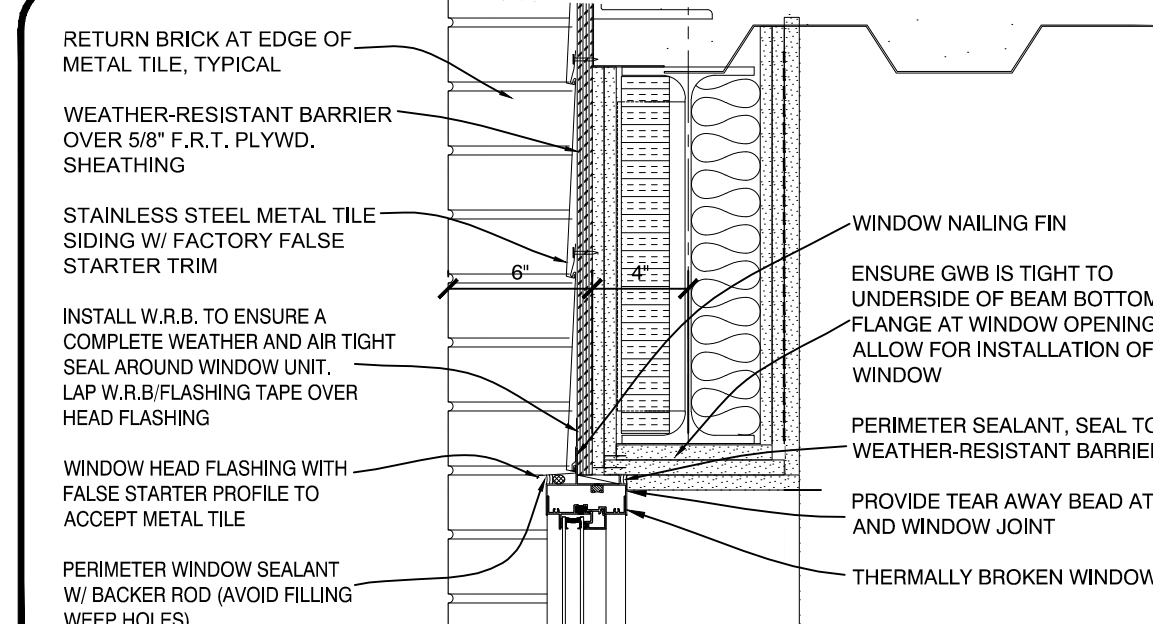
RELIEVING ANGLE DETAIL
SCALE: 1 1/2" = 1'-0"



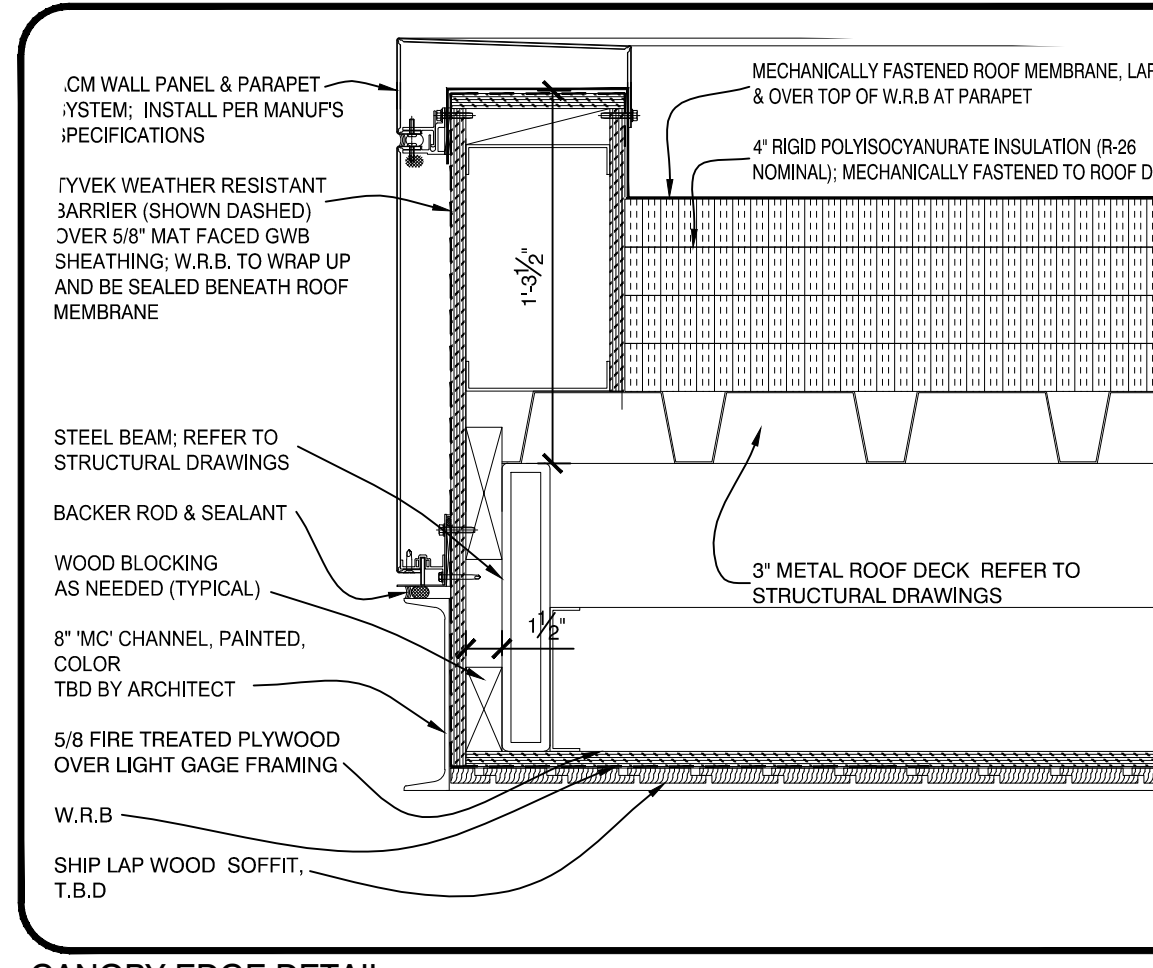
WINDOW JAMB DETAIL
SCALE: 1 1/2" = 1'-0"



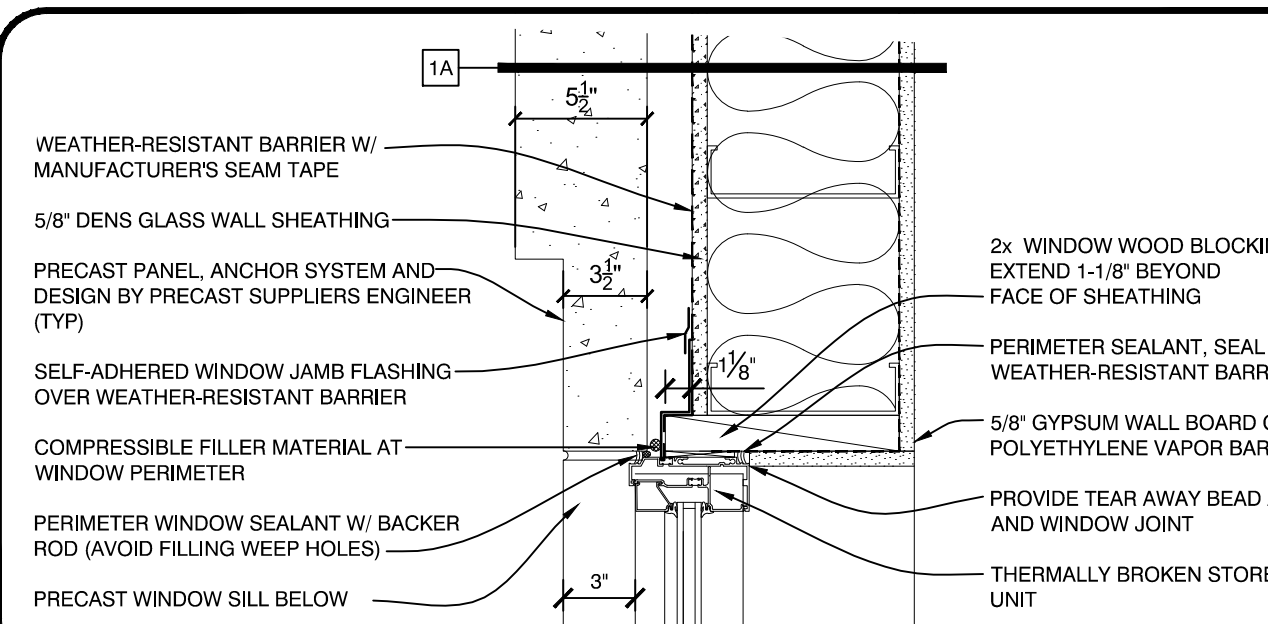
WINDOW SILL DETAIL
SCALE: 1 1/2" = 1'-0"



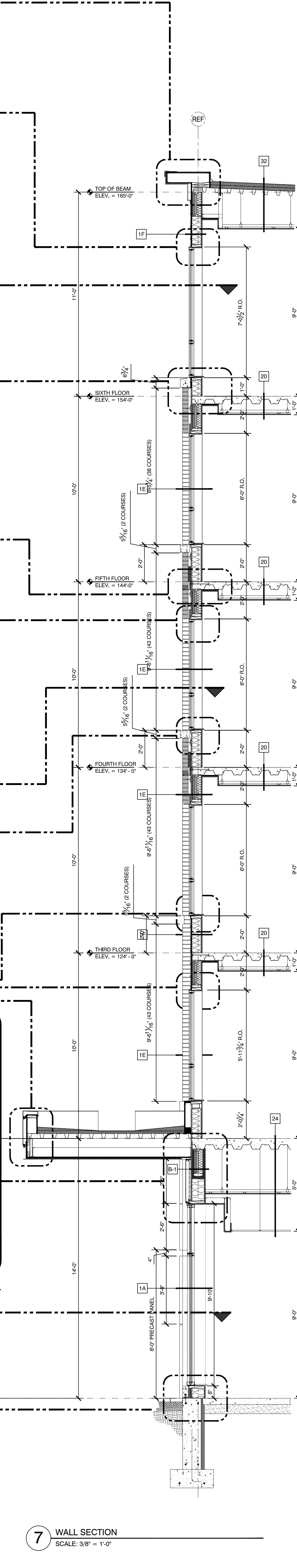
WINDOW HEAD DETAIL
SCALE: 1 1/2" = 1'-0"



CANOPY EDGE DETAIL
SCALE: 1 1/2" = 1'-0"



STOREFRONT JAMB DETAIL
SCALE: 1 1/2" = 1'-0"



7 WALL SECTION
SCALE: 3/8" = 1'-0"

<p>WALL SECTIONS</p> <p>Sheet number: A4.07</p>	<p>Project architect: KAK</p> <p>Drawn by: DLS</p>	<p>ISSUED:</p> <p>10-18-16 60% MARRIOTT REVIEW</p> <p>10-21-16 BUILDING SHELL PERMIT</p> <p>01-27-17 DETAILS ADDED</p> <p>03-14-17 BUILDING PERMIT</p>	<p>REVISION:</p> <p>11-23-16 ASSEMBLY TAGS ADDED</p> <p>02-17-17 DETAILS UPDATED</p> <p>03-03-17 DETAILS/DIMENSIONS UPDATED</p>	<p>AC HOTELS by MARRIOTT</p> <p>Fore Street / Hancock Street / Thames Street Portland, Maine</p>		<p>11 CORPORATE DRIVE • BELMONT • NH 03220 PHONE (603) 527-9090 • WWW.OPEECHEE.COM</p>
---	--	--	---	---	--	--