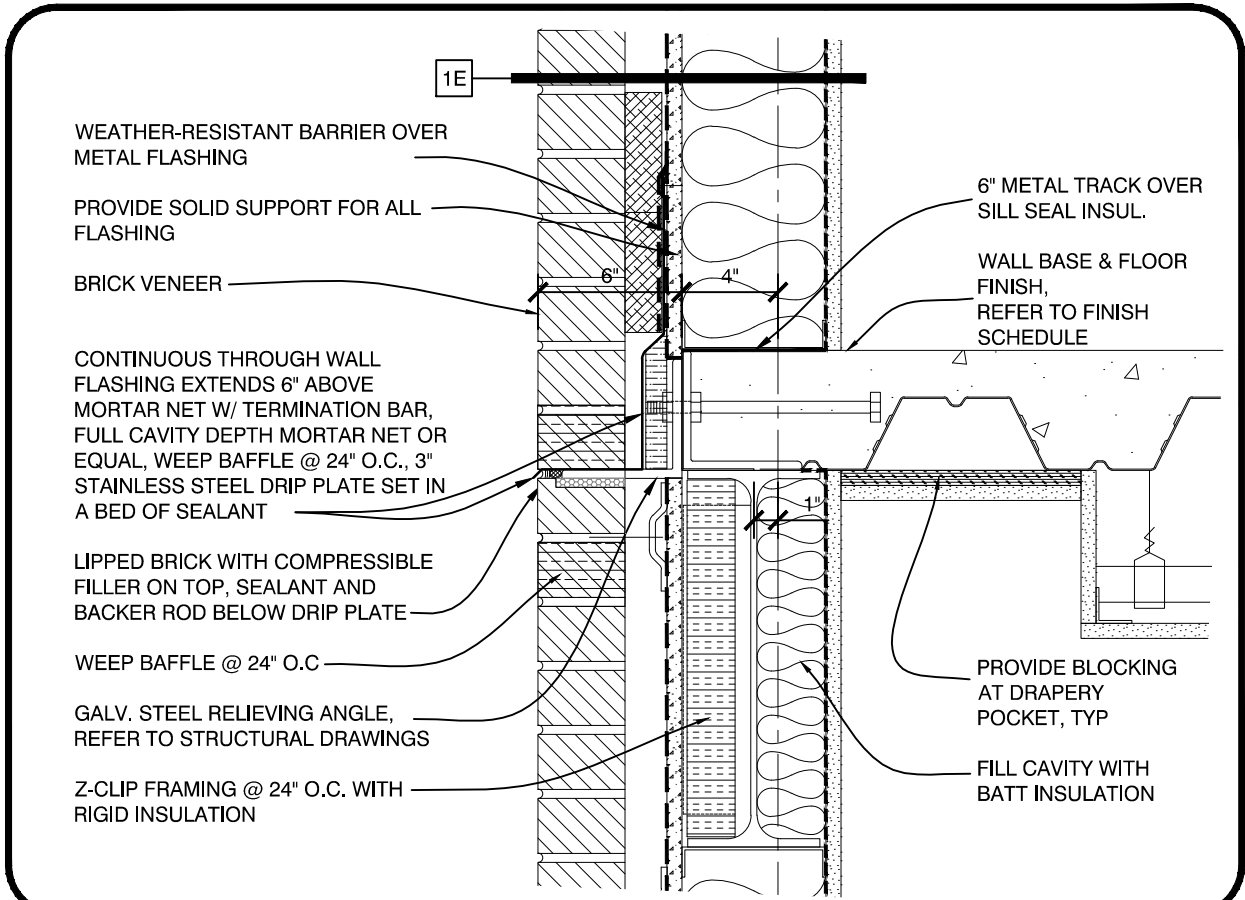
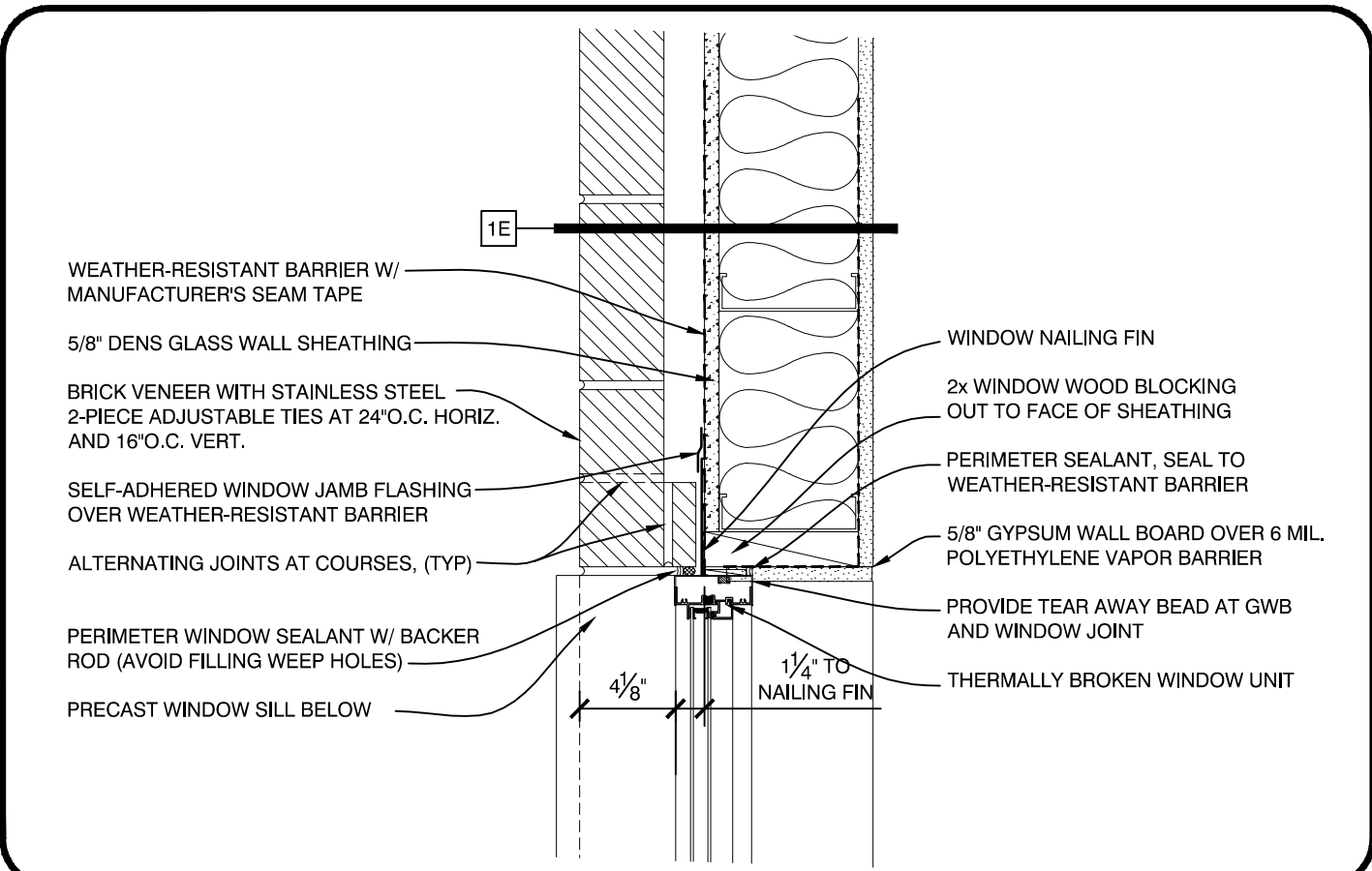


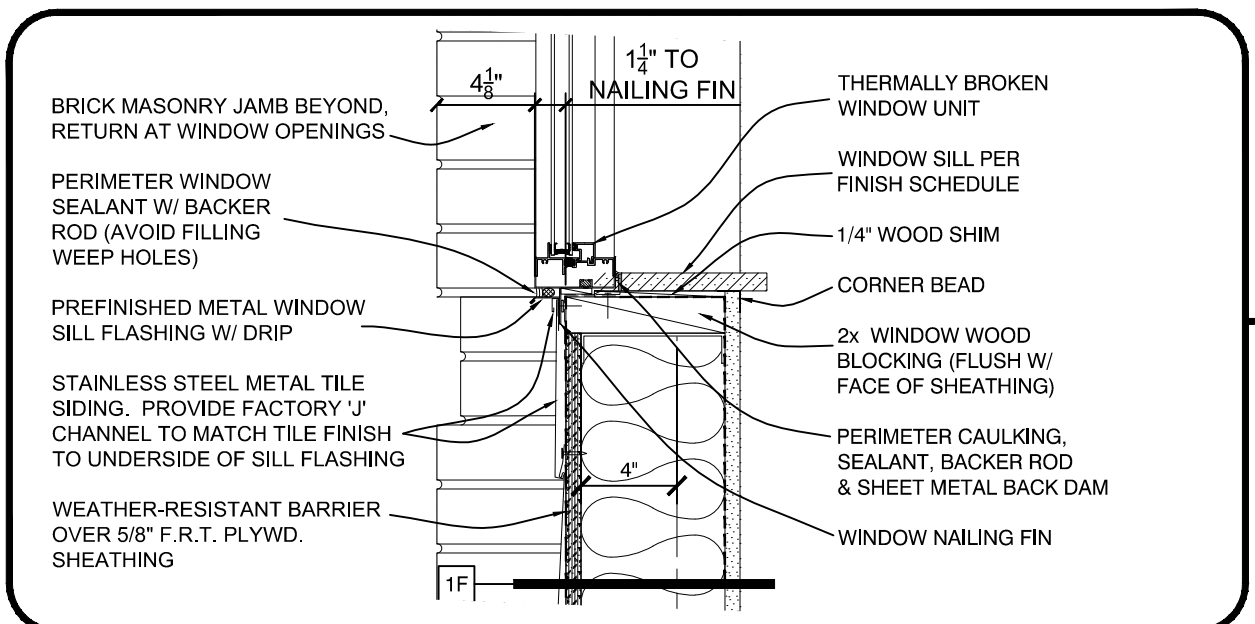
ROOF CORNICE EAVE DETAIL
SCALE: 1 1/2" = 1'-0"



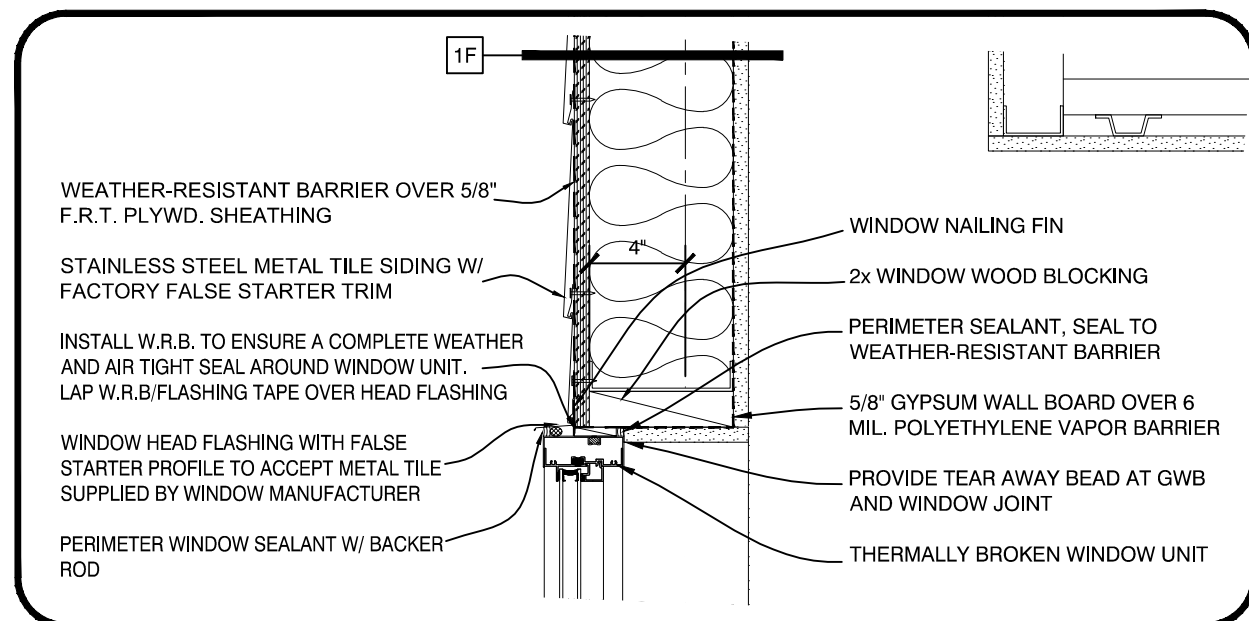
RELIEVING ANGLE DETAIL
SCALE: 1 1/2" = 1'-0"



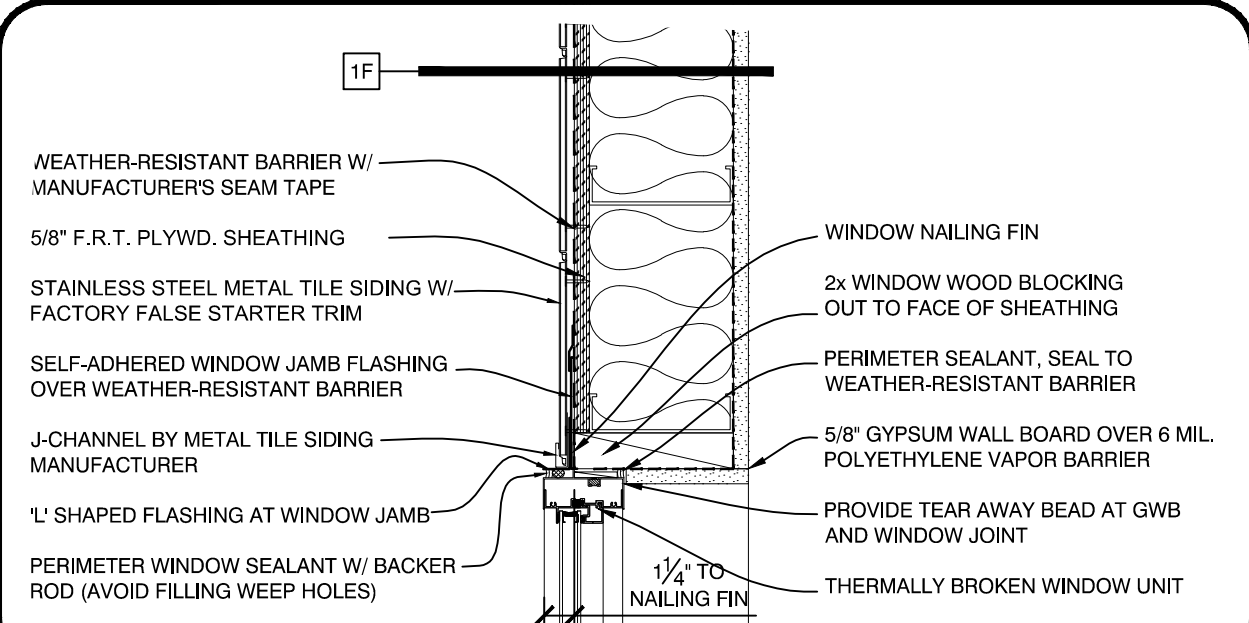
WINDOW JAMB DETAIL
SCALE: 1 1/2" = 1'-0"



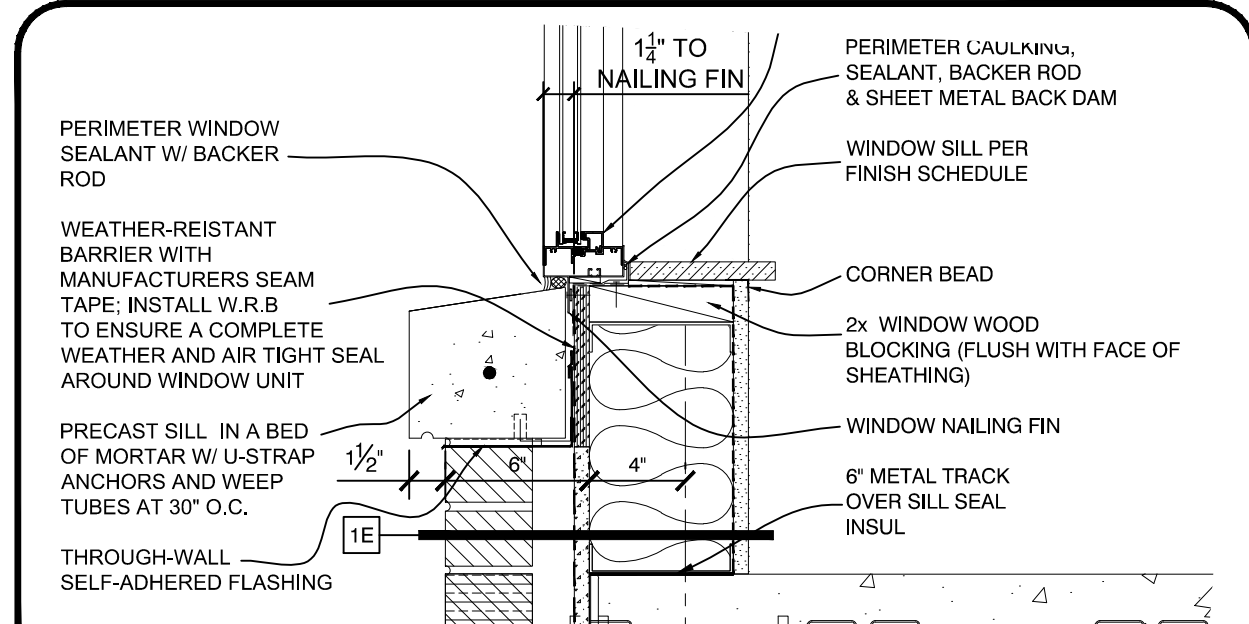
WINDOW SILL DETAIL
SCALE: 1 1/2" = 1'-0"



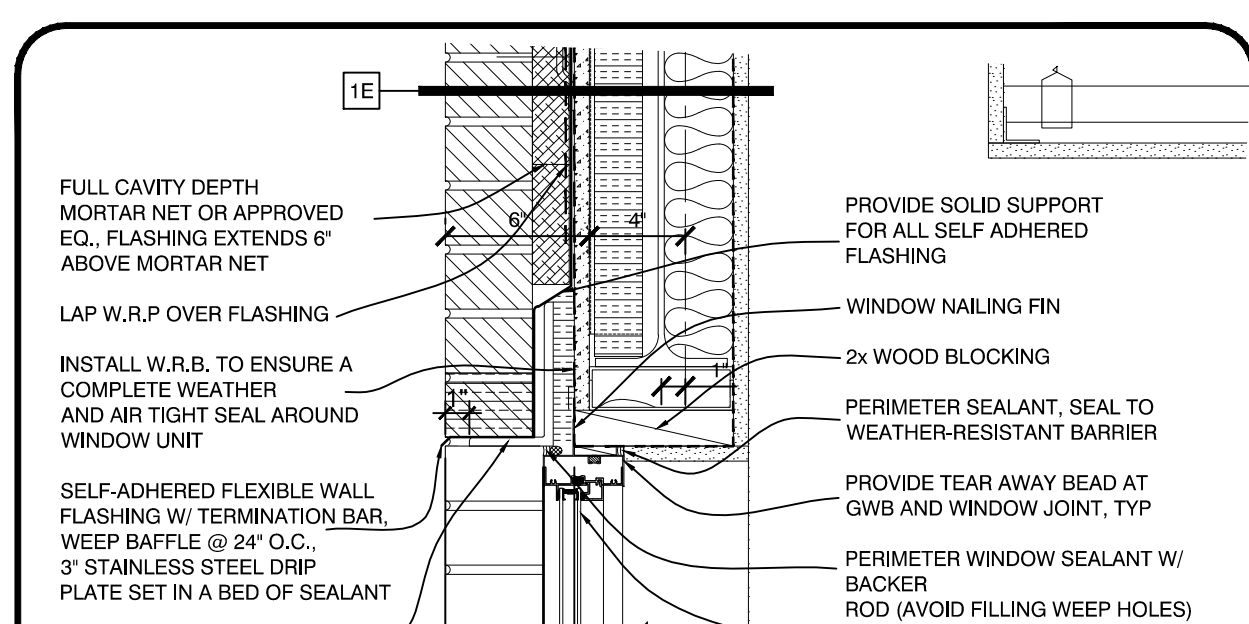
WINDOW HEAD DETAIL
SCALE: 1 1/2" = 1'-0"



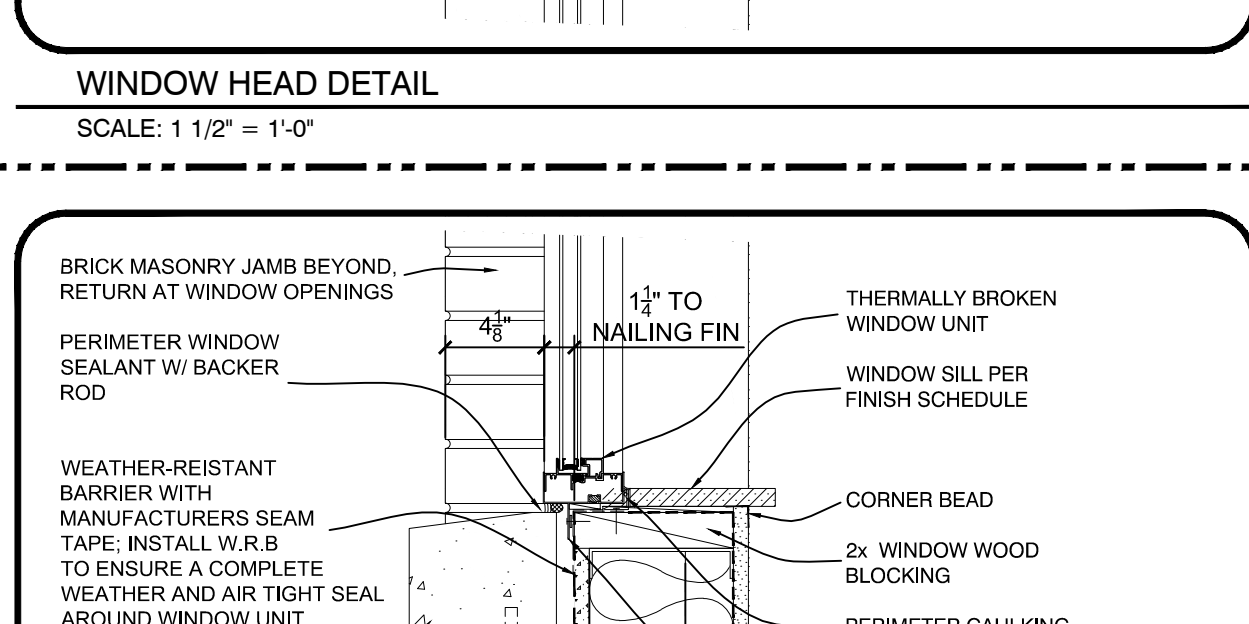
WINDOW JAMB DETAIL
SCALE: 1 1/2" = 1'-0"



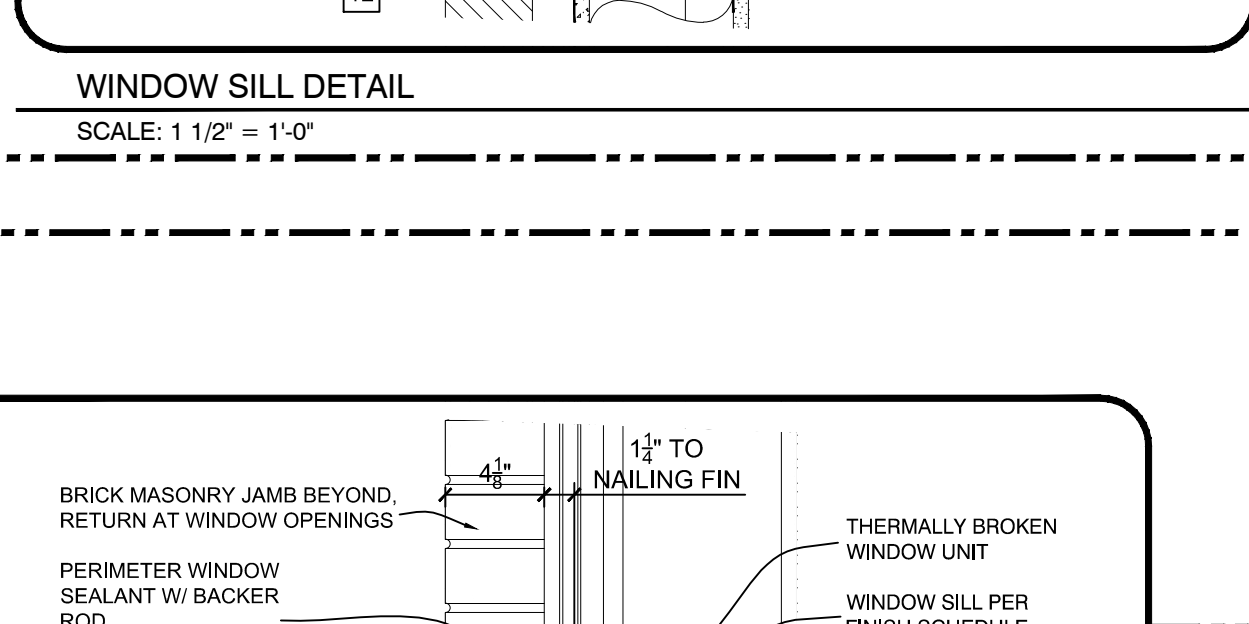
WINDOW SILL DETAIL
SCALE: 1 1/2" = 1'-0"



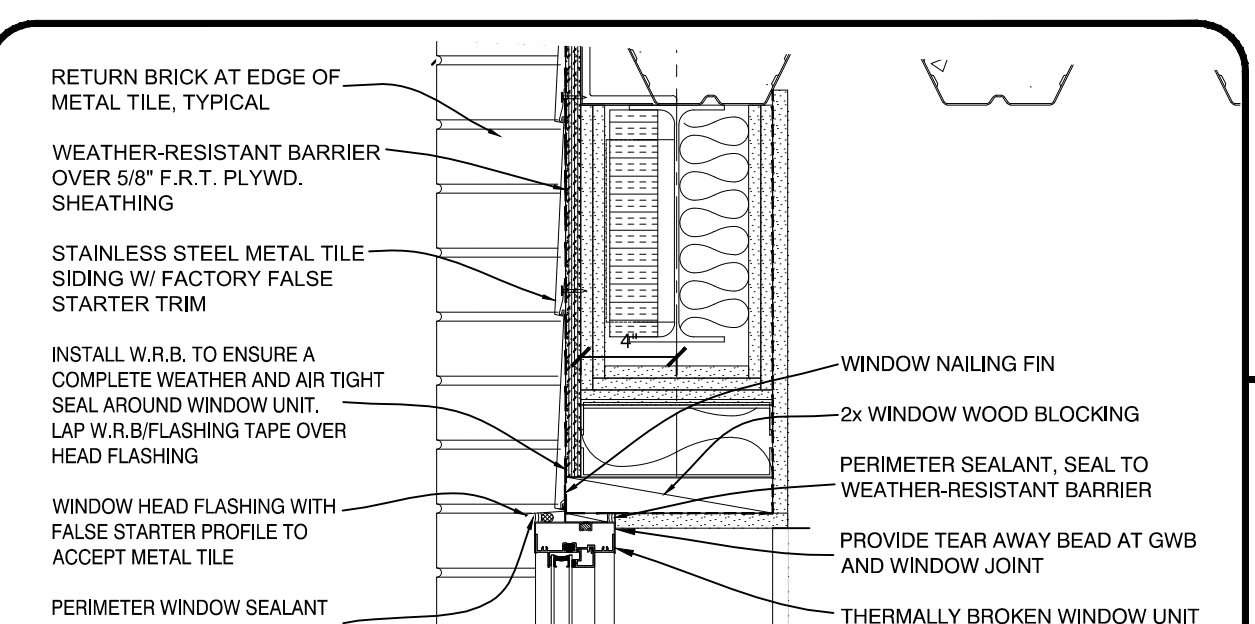
WINDOW HEAD DETAIL
SCALE: 1 1/2" = 1'-0"



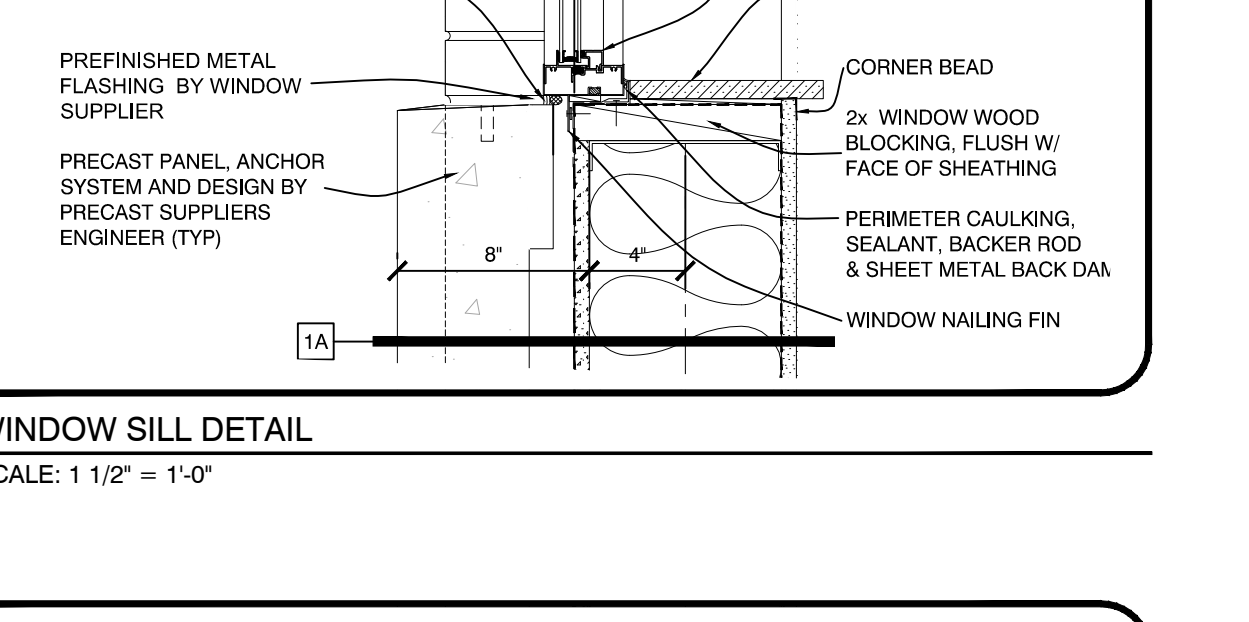
WINDOW SILL DETAIL
SCALE: 1 1/2" = 1'-0"



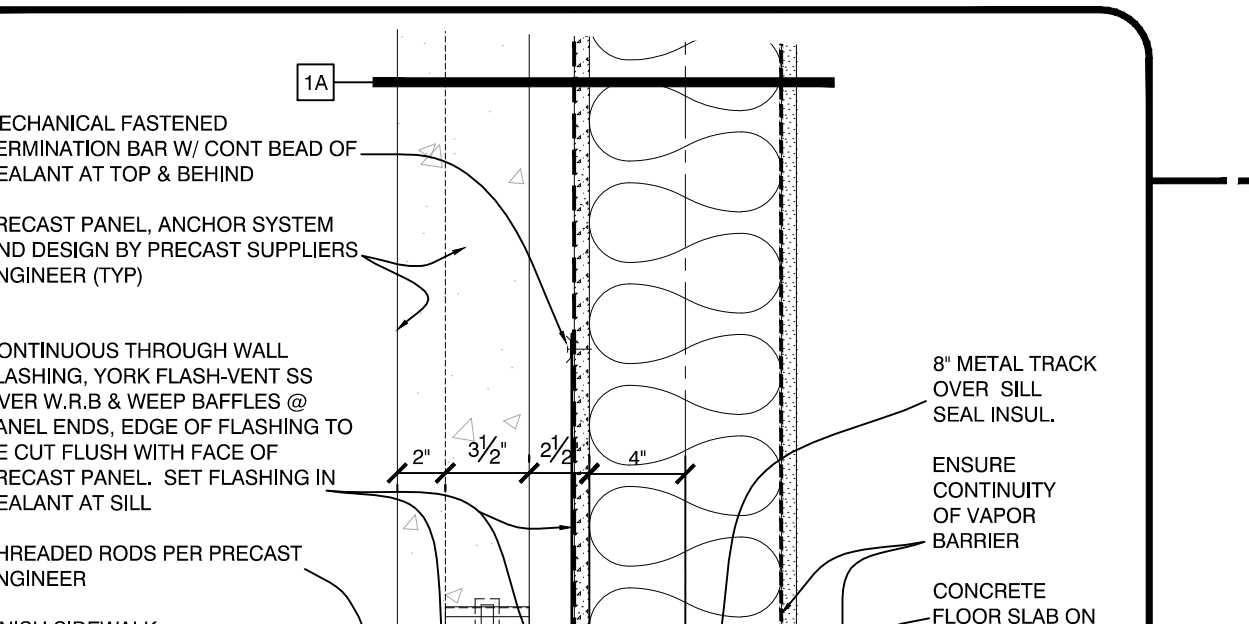
WINDOW SILL DETAIL
SCALE: 1 1/2" = 1'-0"



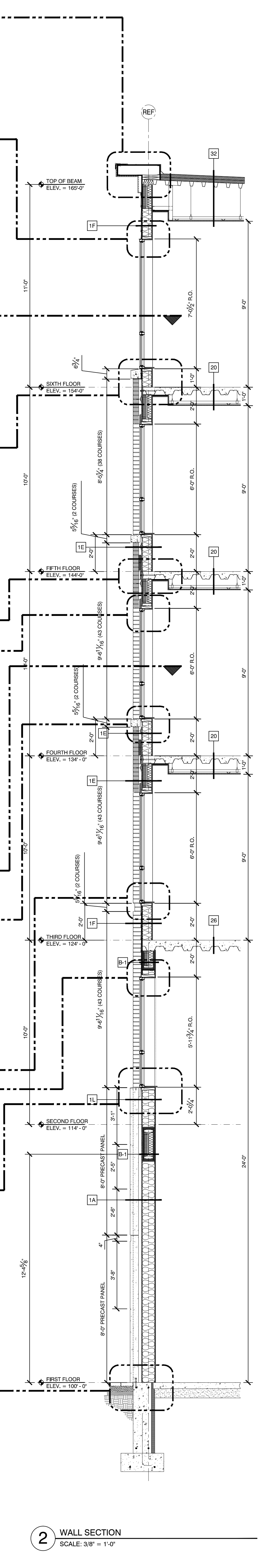
WINDOW HEAD DETAIL
SCALE: 1 1/2" = 1'-0"



WINDOW SILL DETAIL
SCALE: 1 1/2" = 1'-0"



WALL BASE DETAIL
SCALE: 1 1/2" = 1'-0"



WALL SECTION
SCALE: 3/8" = 1'-0"

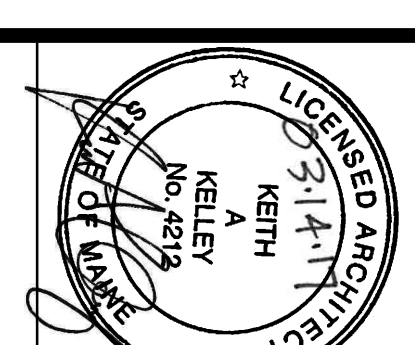
<p>ISSUED:</p> <p>10-18-16 60% MARRIOTT REVIEW</p> <p>10-21-16 BUILDING SHELL PERMIT</p> <p>01-27-17 DETAILS ADDED</p> <p>03-14-17 BUILDING PERMIT</p>	<p>REVISION:</p> <p>11-23-16 ASSEMBLY TAGS ADDED</p> <p>02-17-17 DETAILS UPDATED</p> <p>03-03-17 DETAILS/DIMENSIONS UPDATED</p>	<p>PROJECT ARCHITECT: KAK</p> <p>DESIGNER: DLS</p>	<p>AC HOTELS by MARRIOTT</p> <p>Fore Street / Hancock Street / Thames Street</p> <p>Portland, Maine</p>		

A4.02

WALL SECTIONS

PROJECT ARCHITECT: KAK

DESIGNER: DLS



11 CORPORATE DRIVE ■ BELMONT ■ NH 03220
PHONE (603) 527-9090 ■ WWW.OPEECHEE.COM