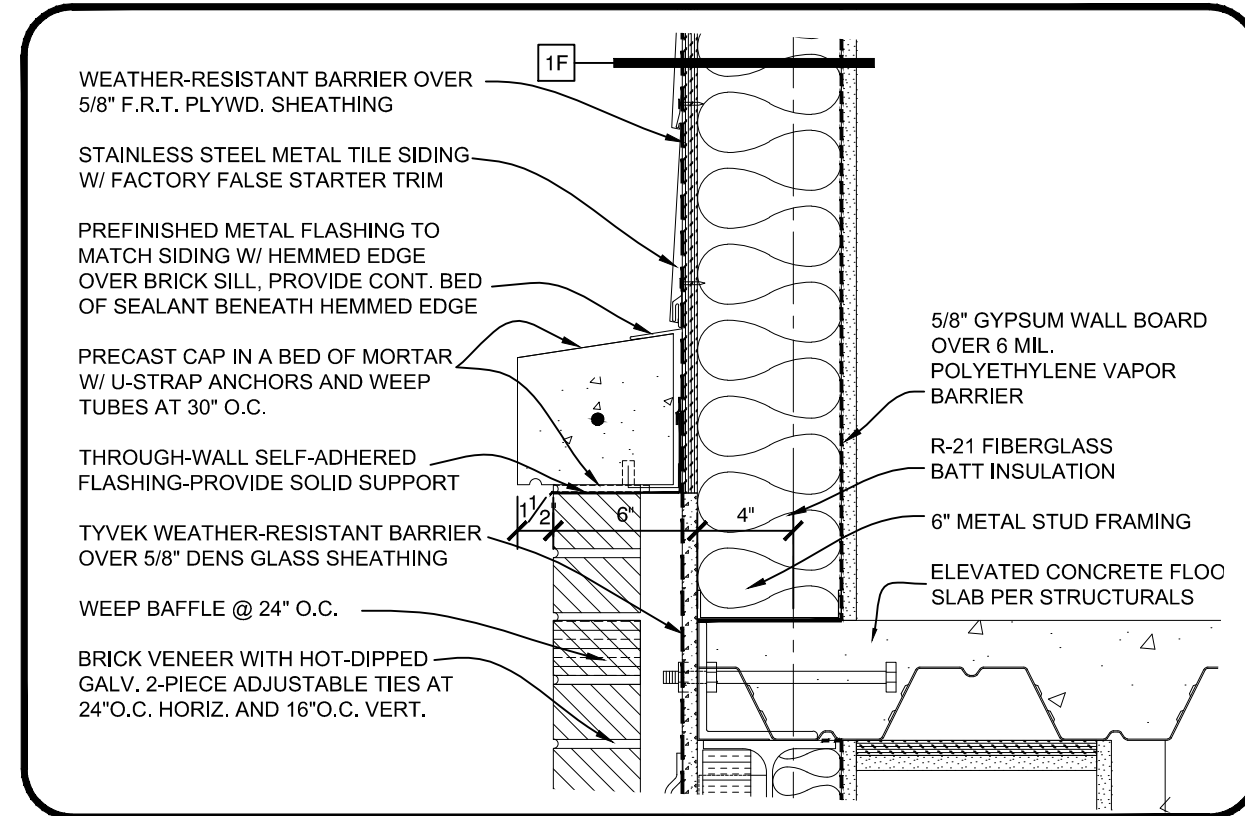
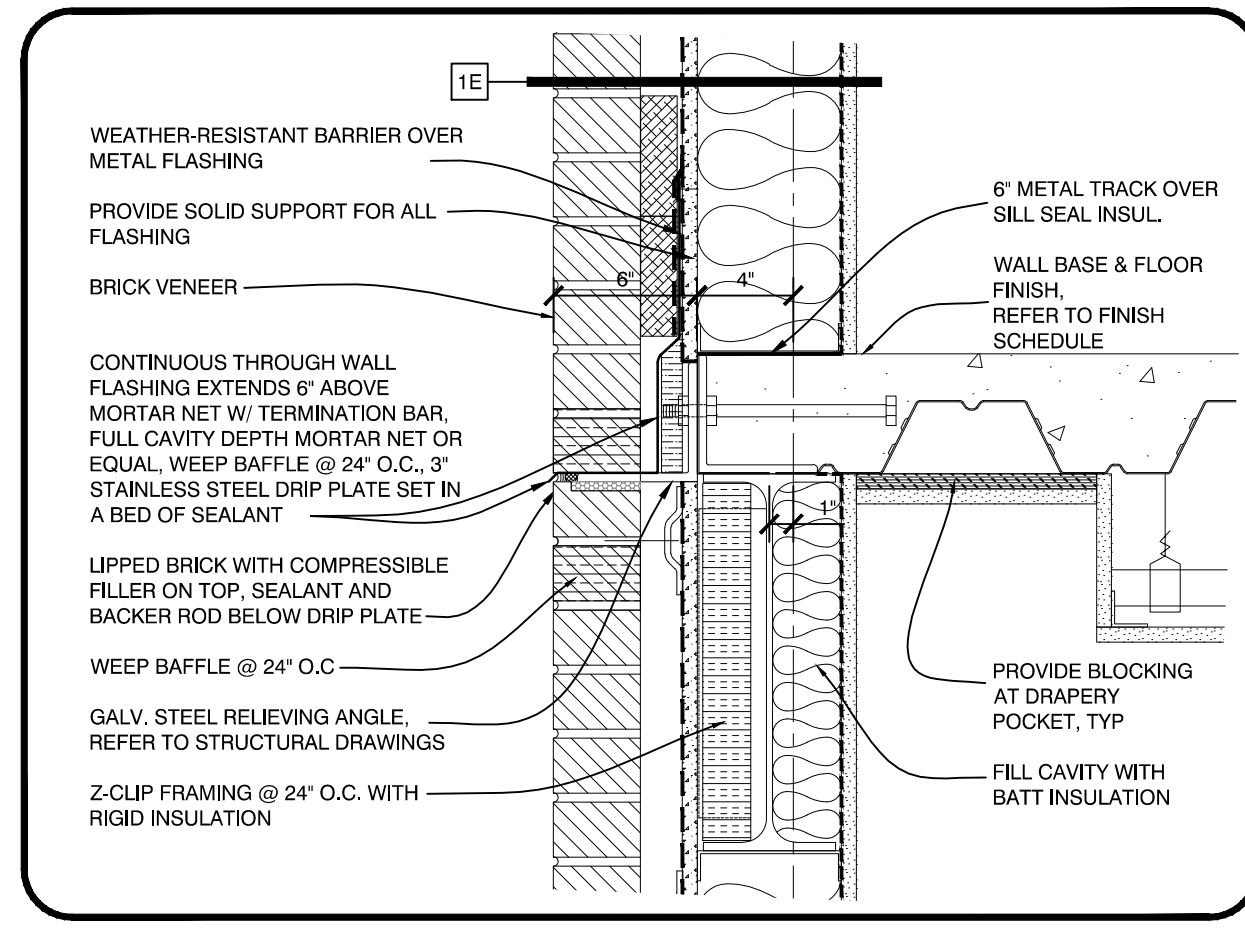


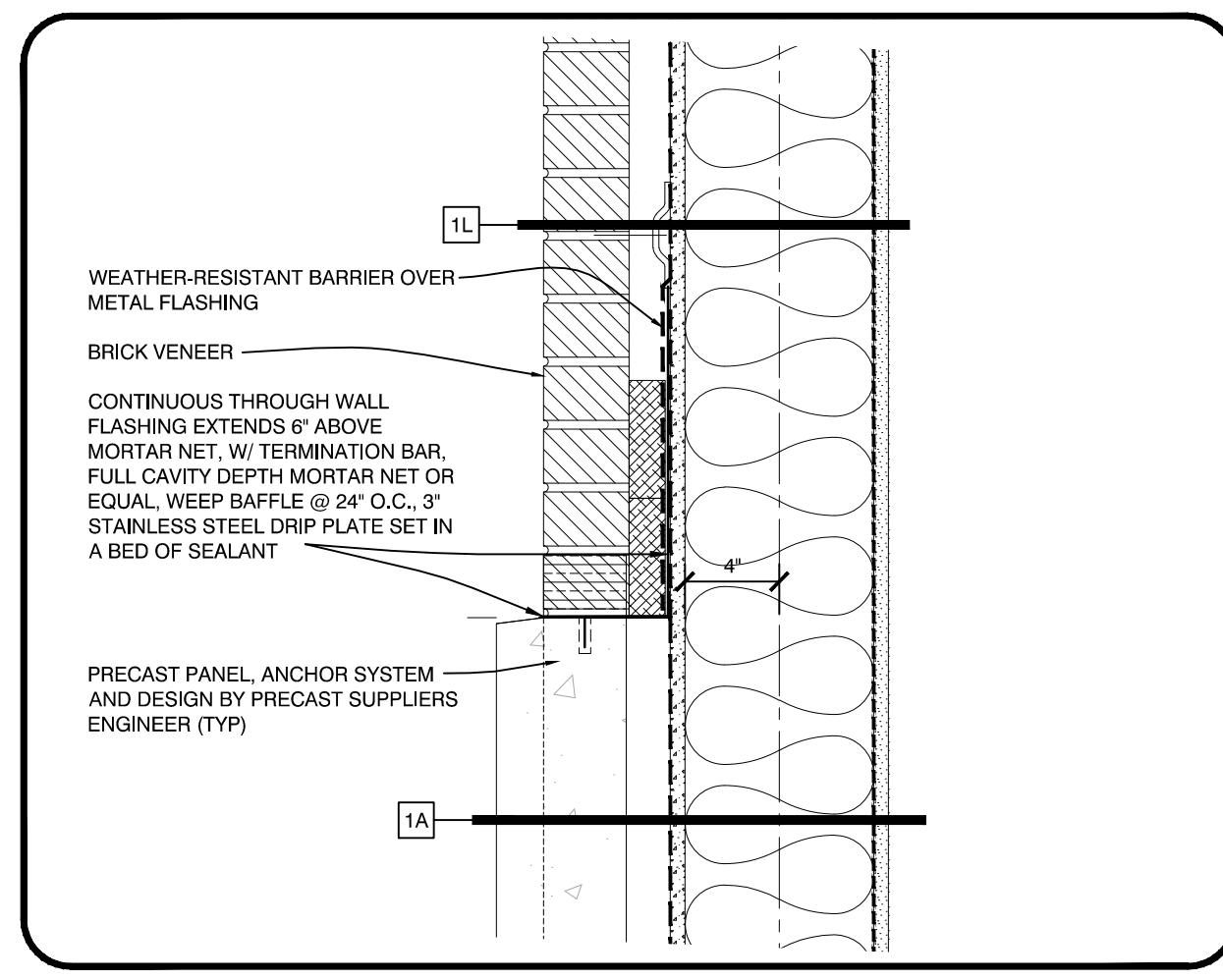
**ROOF CORNICE EAVE DETAIL**  
SCALE: 1 1/2" = 1'-0"



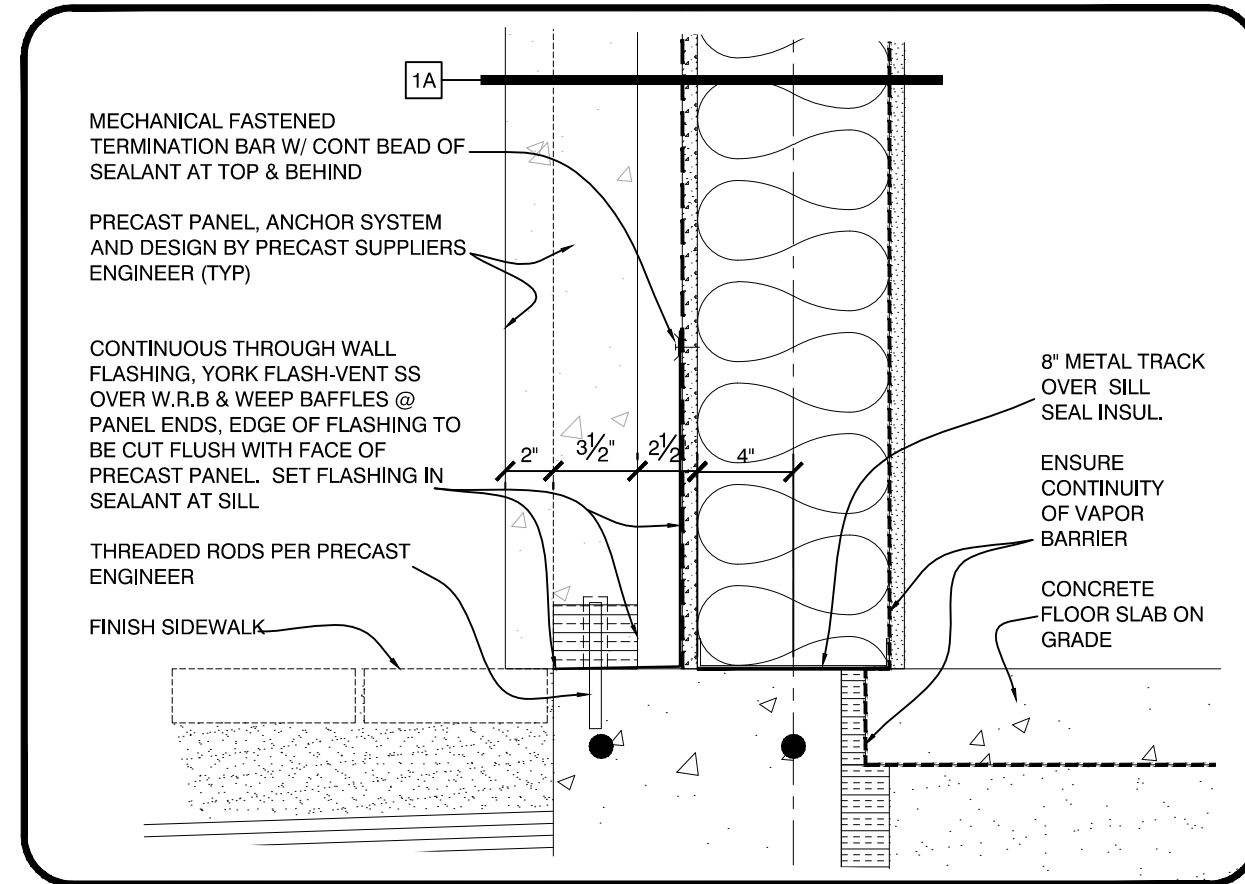
**BRICK WALL DETAIL**  
SCALE: 1 1/2" = 1'-0"



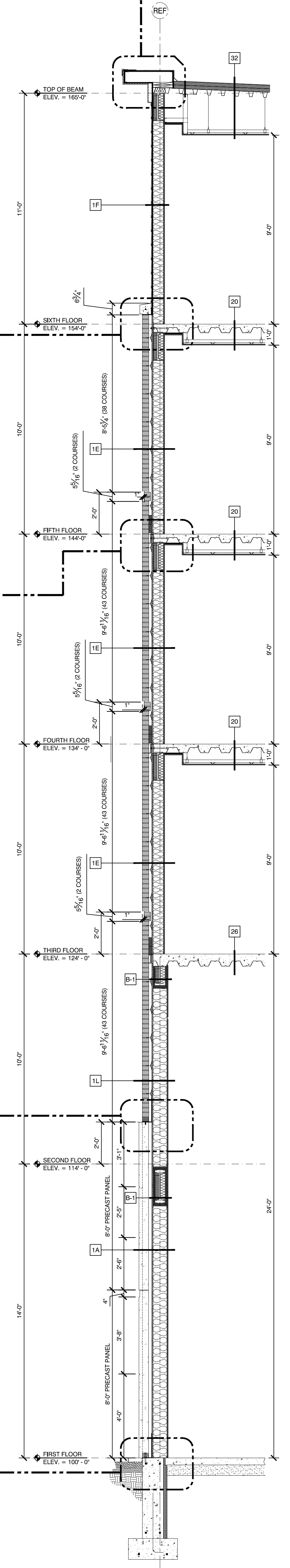
**RELIEVING ANGLE DETAIL**  
SCALE: 1 1/2" = 1'-0"



**PRECAST TOP EDGE DETAIL**  
SCALE: 1 1/2" = 1'-0"



**WALL BASE DETAIL**  
SCALE: 1 1/2" = 1'-0"



**1 WALL SECTION**  
SCALE: 3/8" = 1'-0"

Sheet number: **A4.01**

**WALL SECTIONS**

Project architect: **KAK**  
drawn by: **DLS**

**ISSUED:**

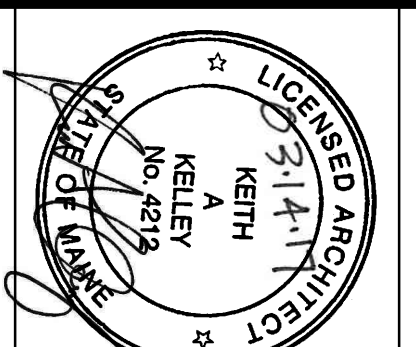
08-12-16 FOUNDATION & STEEL PERMIT  
10-21-16 BUILDING SHELL PERMIT  
01-27-17 DETAILS ADDED  
03-14-17 BUILDING PERMIT

**REVISION:**

11-23-16 ASSEMBLY TAGS ADDED  
02-17-17 DETAILS UPDATED  
03-03-17 DETAILS/DIMENSIONS UPDATED

**AC HOTELS by MARRIOTT**

Fore Street / Hancock Street / Thames Street  
Portland, Maine



**OPECHEE CONSTRUCTION CORPORATION**

11 CORPORATE DRIVE ■ BELMONT ■ NH 03220  
PHONE (603) 527-9090 ■ WWW.OPECHEE.COM