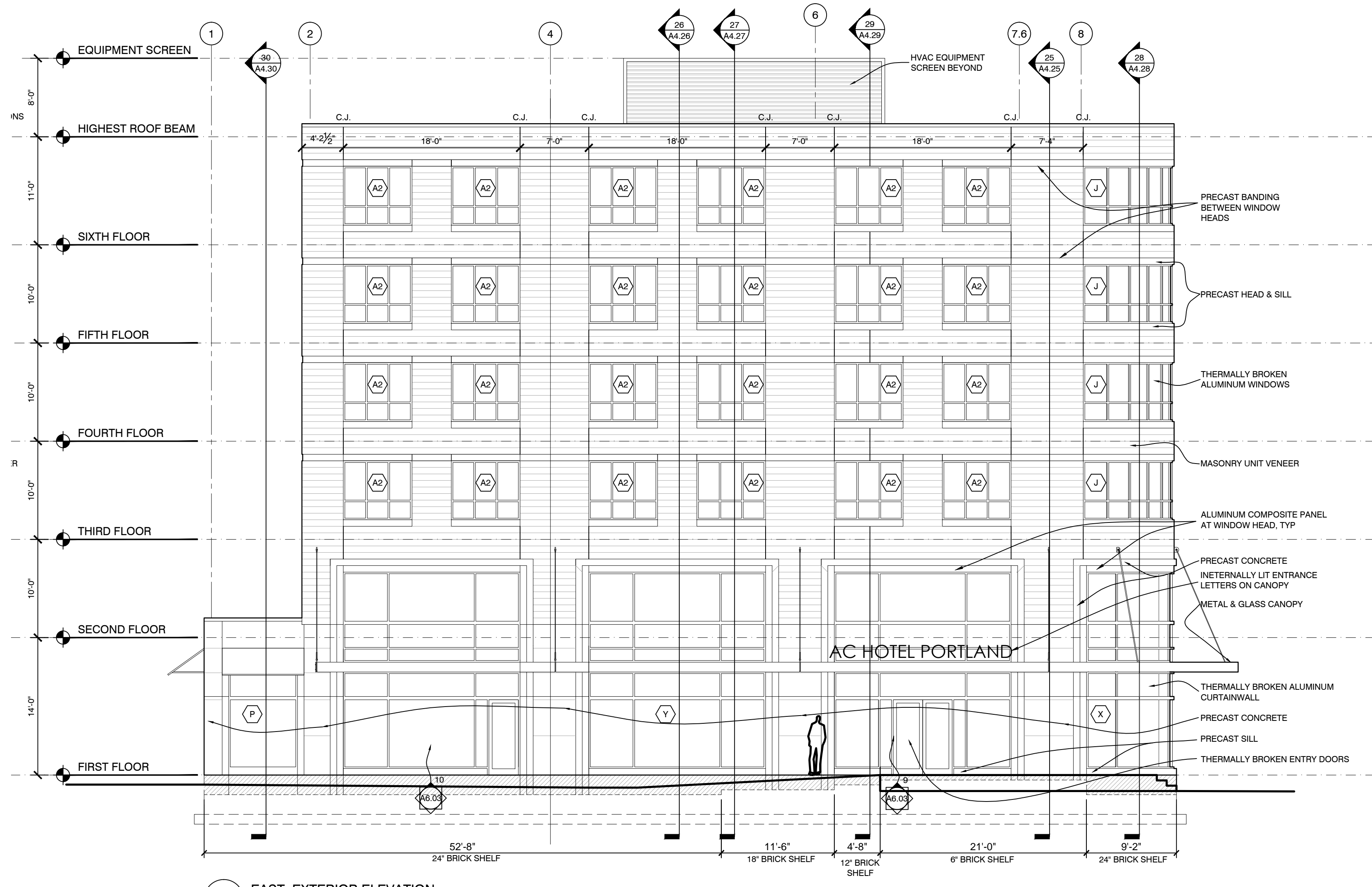


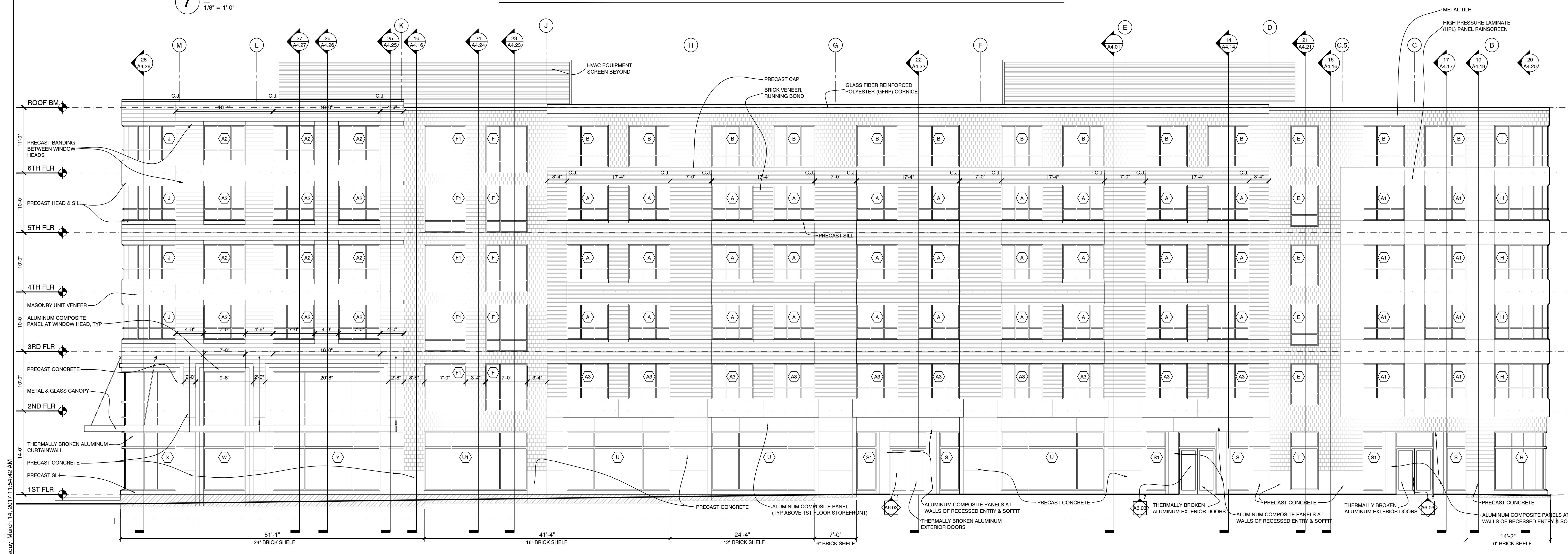
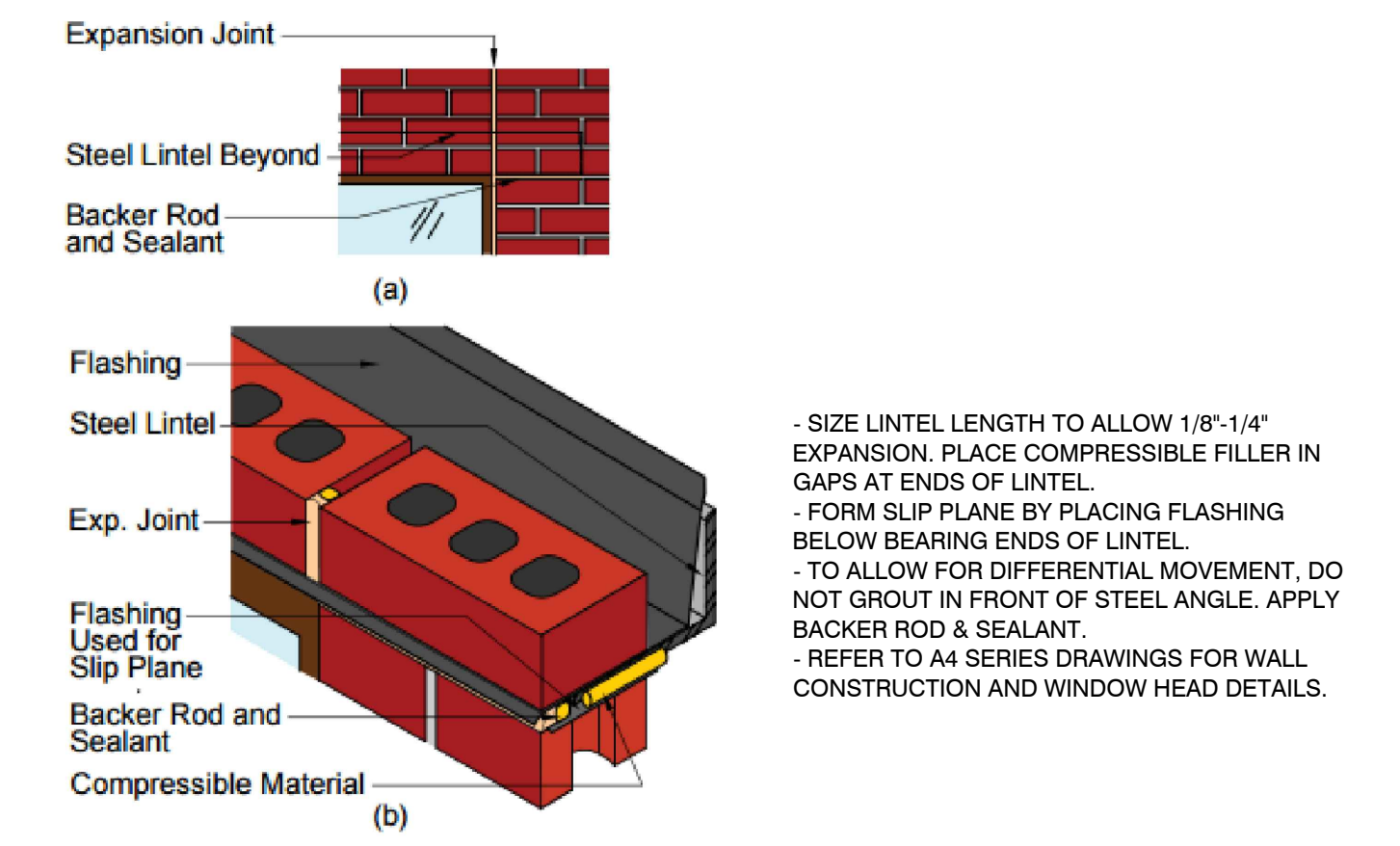
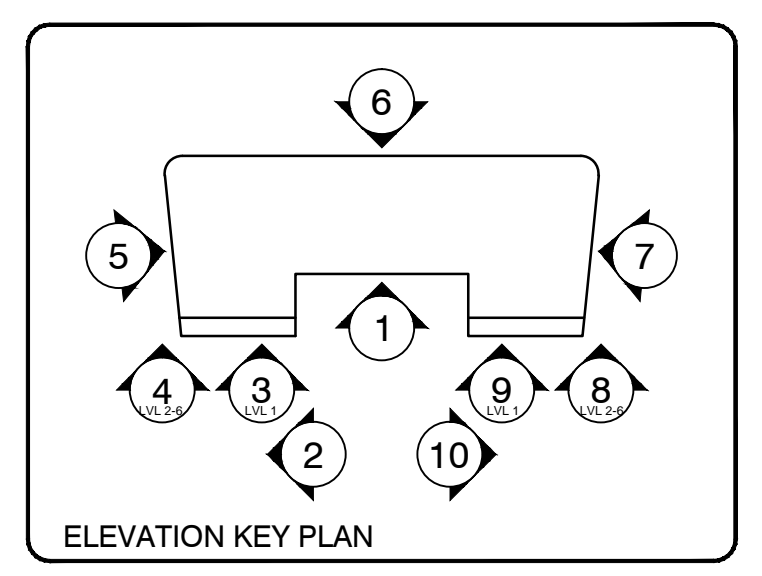
Copyright 2016 Opechee Construction Corporation



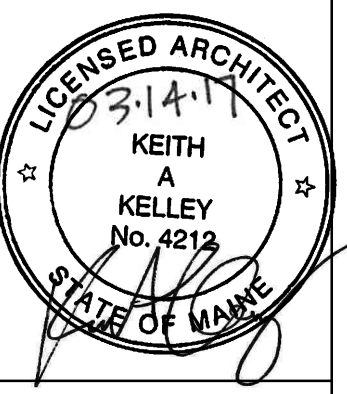
**7 EAST EXTERIOR ELEVATION**  
1/8" = 1'-0"

**EXTERIOR MATERIAL LEGEND:**

MATERIAL	MANUFACTURER	COLOR/FINISH
BRICK	REDLAND BRICK	KF BRICK #303 HARTFORD RED
CMU	GENEST	#010 GRANITE SATIN WEATHERED
HIGH PRESSURE LAMINATE (HPL)	TRESPA	LUMEN L25.8.1 NEW YORK GREY DIFFUSE
ALUMINUM COMPOSITE PANEL (ACM)	VITRABOND	SMOKE SILVER METALLIC VB9134
METAL TILE	MILLENNIUM FORMS	DIAMOND TILE STAINLESS STEEL MILL FINISH, NATURAL COLOR
LIGHT PRECAST	MGA	CORAL
DARK PRECAST	MGA	CUSTOM COLOR
STOREFRONT	KAWNEER	UC109852 PERMAFLOUR CHARCOAL
ROOF SCREEN	MORIN	BLUE GRAY, SR:0.27 E:0.85 SRI:25



**6 NORTH EXTERIOR ELEVATION**  
1/8" = 1'-0"



**AC HOTELS by MARRIOTT**  
Fore Street / Hancock Street / Thames Street  
Portland, Maine

**REVISION:**

- 01-03-17 PRECAST UPDATED PER SHOPS
- 01-13-17 SECTION & WINDOW TAG #S
- 01-27-17 MATERIAL LEGEND & C/J'S ADDED
- 03-10-17 ACM PANEL NOTES

**ISSUED:**

- 08-12-16 FOUNDATION & STEEL PERMIT
- 10-18-16 80% MARRIOTT REVIEW
- 10-21-16 BUILDING SHELL PERMIT
- 03-14-17 BUILDING PERMIT

project architect: KAK  
drawn by: DLS

**EXTERIOR BUILDING ELEVATIONS**

sheet number:  
**A3.02**

Tuesday, March 14, 2017 11:54:42 AM