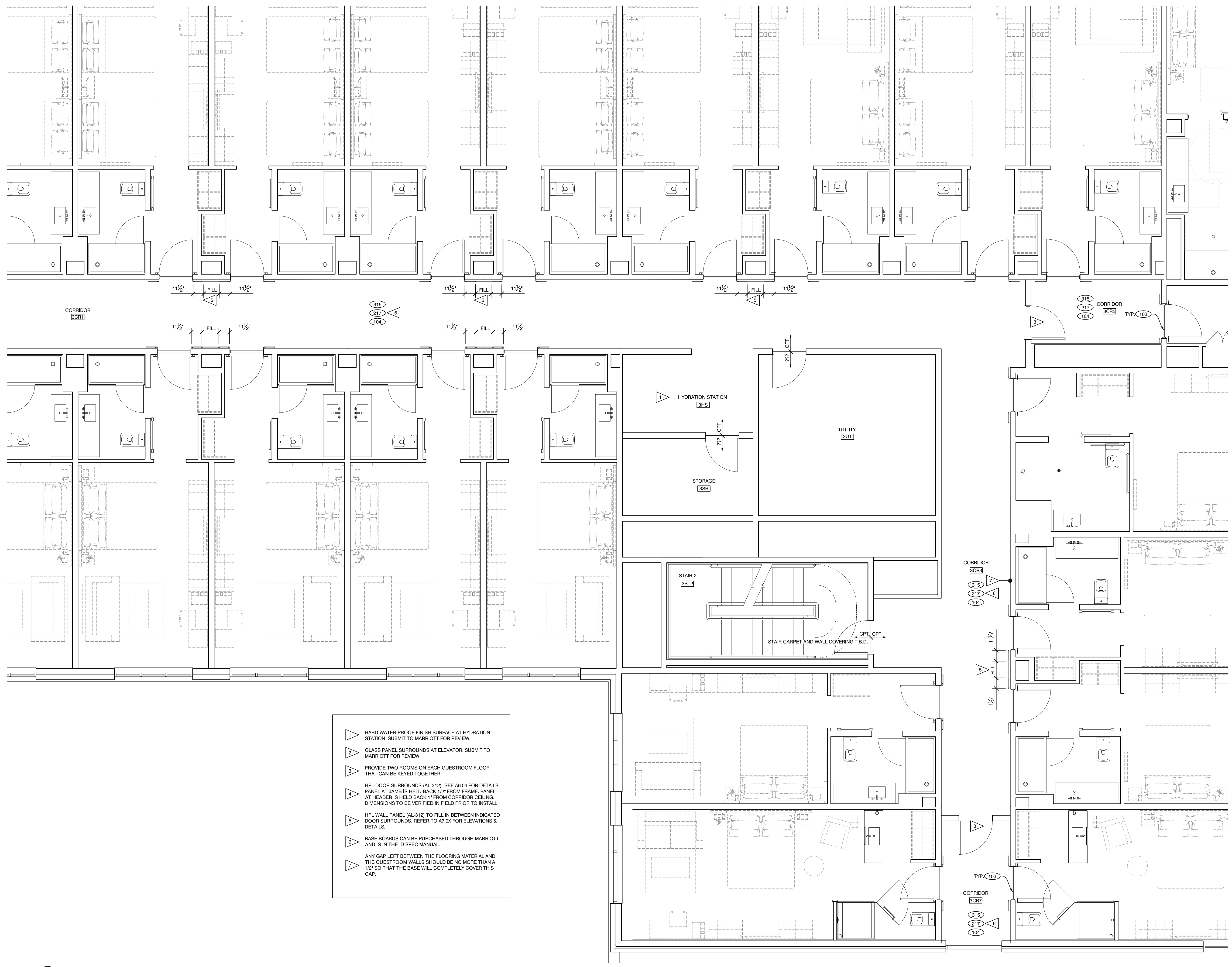



Tuesday, March 14, 2017 11:35:24 AM



- ▽ HARD WATER PROOF FINISH SURFACE AT HYDRATION STATION. SUBMIT TO MARRIOTT FOR REVIEW.
- ▽ GLASS PANEL SURROUNDS AT ELEVATOR. SUBMIT TO MARRIOTT FOR REVIEW.
- ▽ PROVIDE TWO ROOMS ON EACH GUESTROOM FLOOR THAT CAN BE KEYPED TOGETHER.
- ▽ HPL DOOR SURROUNDS (AL-319)- SEE A5.04 FOR DETAILS. PANEL AT JAMB IS HELD BACK 1/2" FROM FRAME. PANEL AT HEADER IS HELD BACK 1" FROM CORRIDOR CEILING. DIMENSIONS TO BE VERIFIED IN FIELD PRIOR TO INSTALL.
- ▽ HPL WALL PANEL (AL-312) TO FILL IN BETWEEN INDICATED DOOR SURROUNDS. REFER TO A7.0X FOR ELEVATIONS & DETAILS.
- ▽ BASE BOARDS CAN BE PURCHASED THROUGH MARRIOTT AND IS IN THE ID SPEC MANUAL.
- ▽ ANY GAP LEFT BETWEEN THE FLOORING MATERIAL AND THE GUESTROOM WALLS SHOULD BE NO MORE THAN A 1/2" SO THAT THE BASE WILL COMPLETELY COVER THIS GAP.

PLAN  NORTH **1** TYPICAL FINISH PLAN  
1/4" = 1'-0"