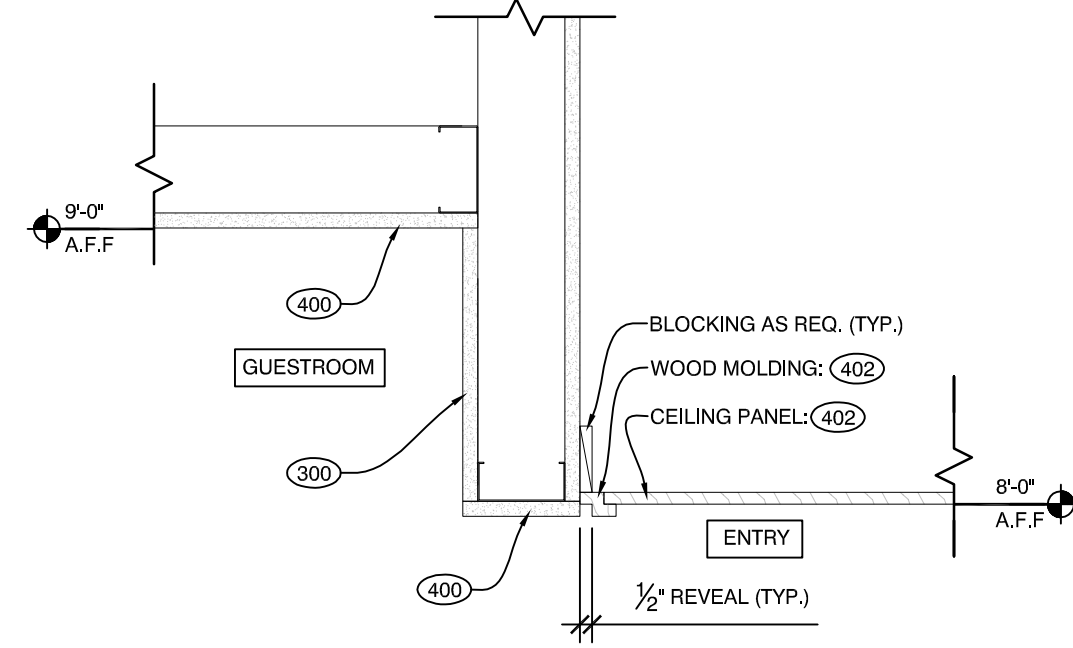
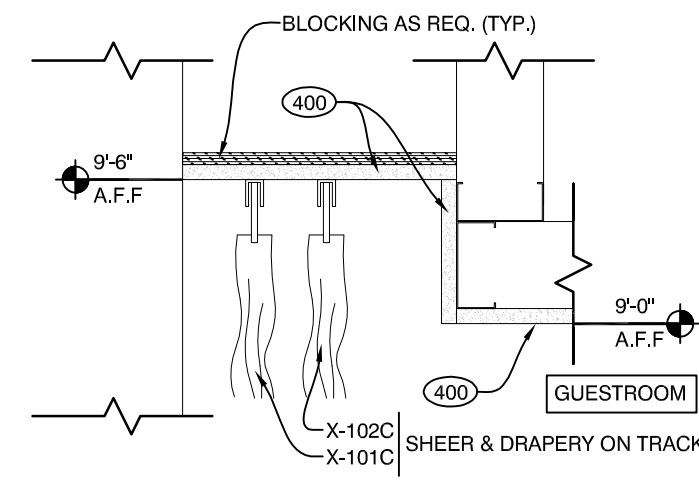


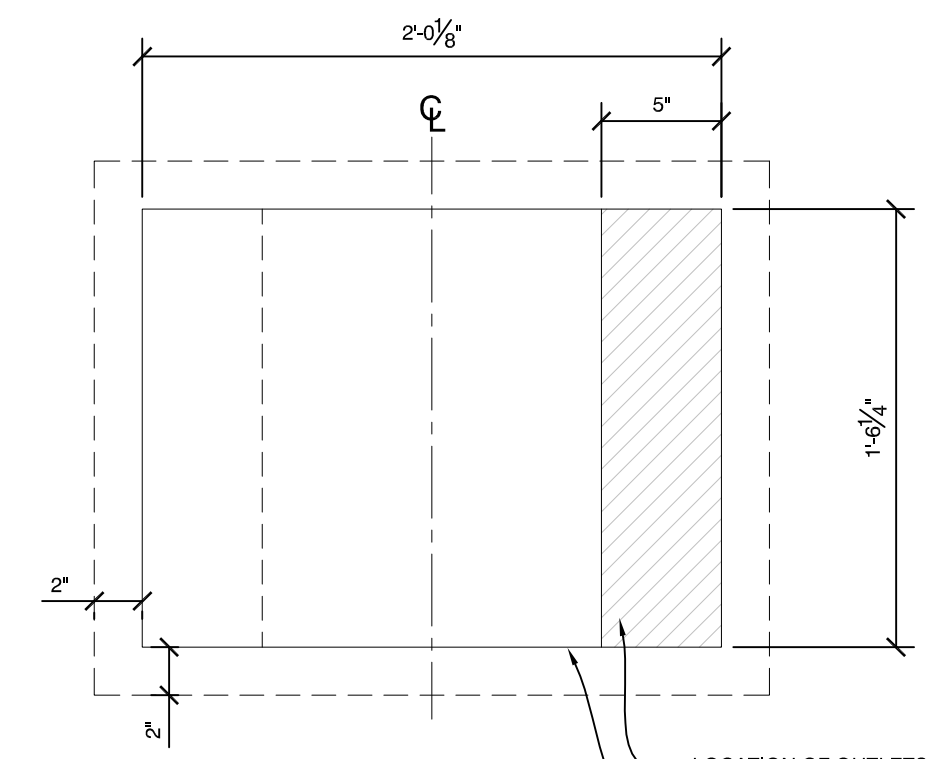
10 CEILING DETAIL AT BATH
1-1/2" = 1'-0"



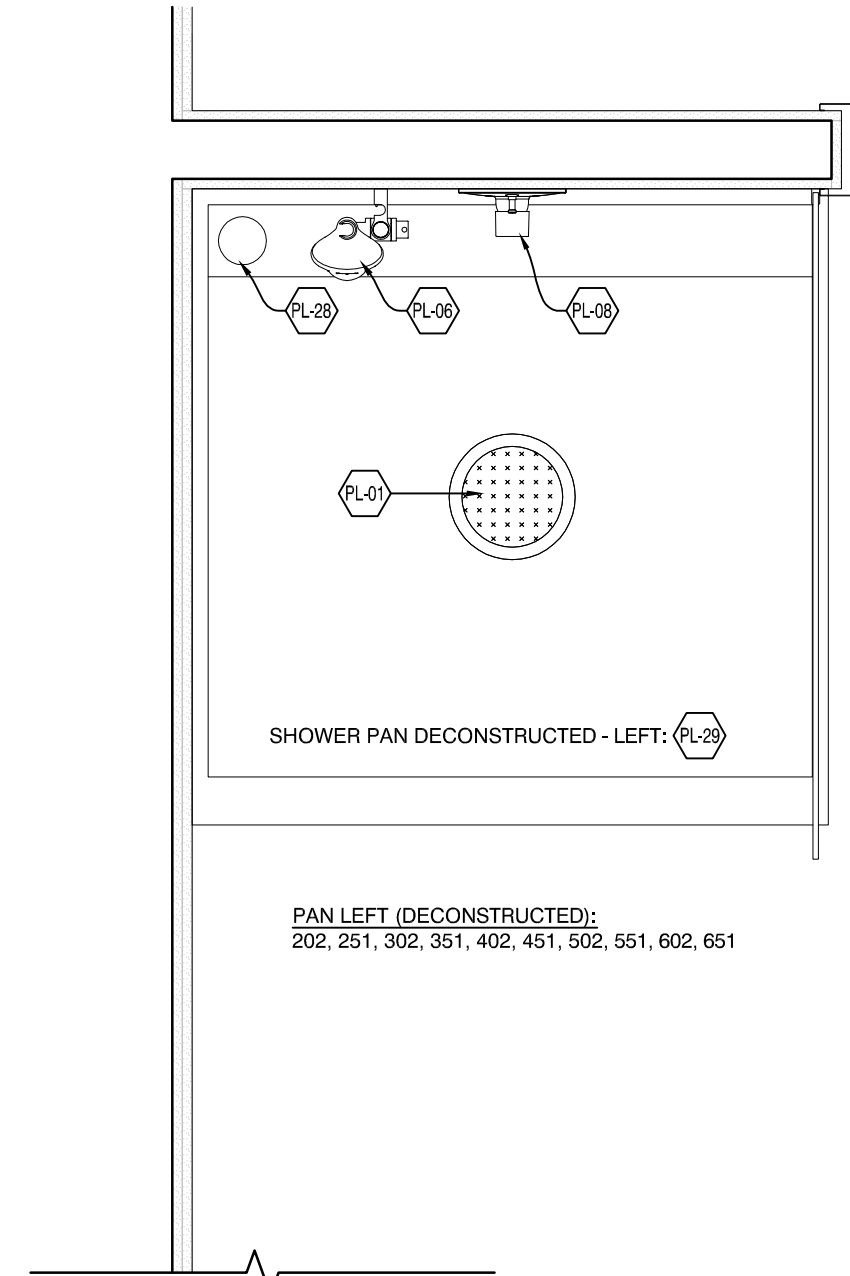
9 CEILING AT ROOM ENTRY
1-1/2" = 1'-0"



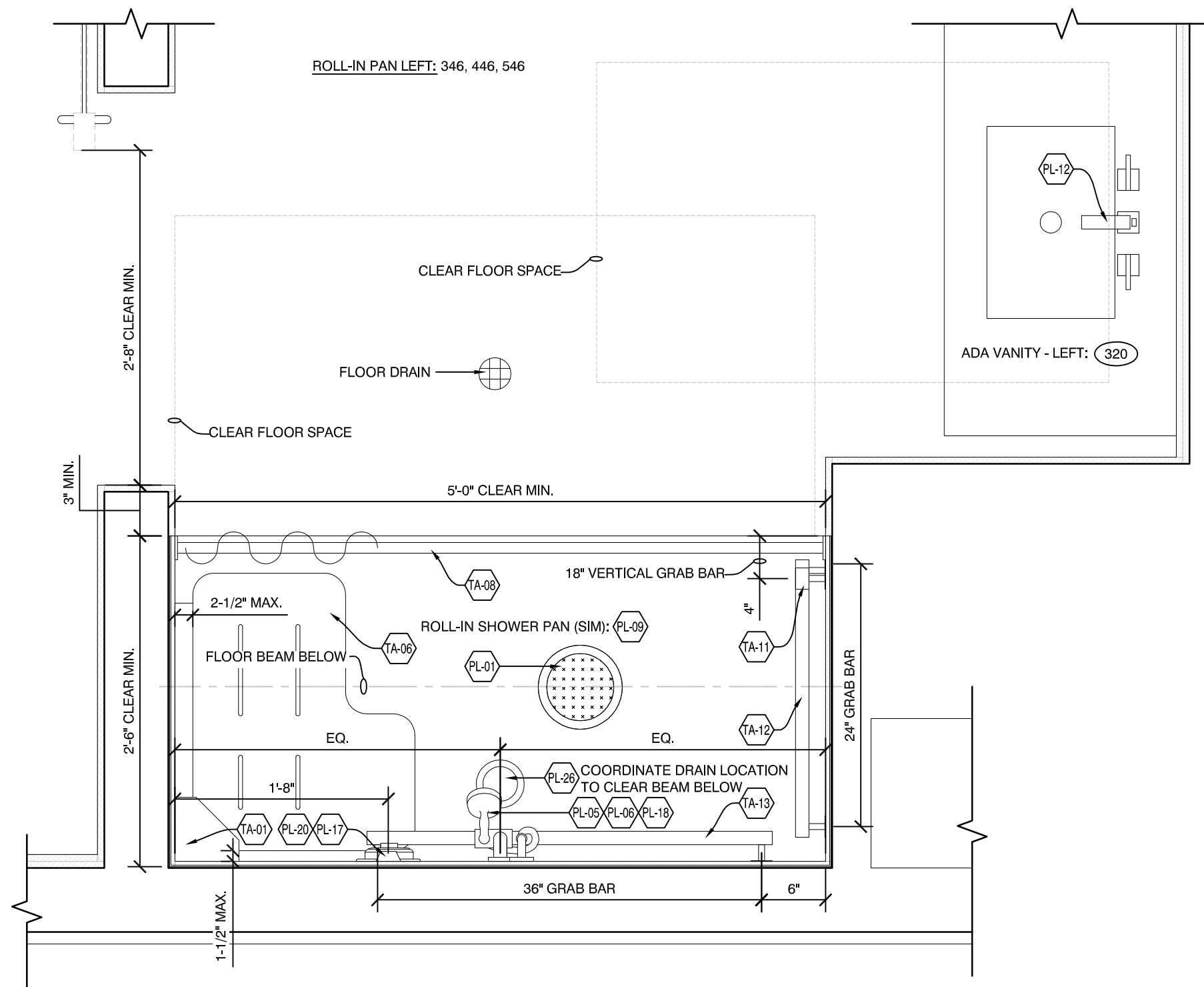
8 DRAPERY POCKET
1-1/2" = 1'-0"



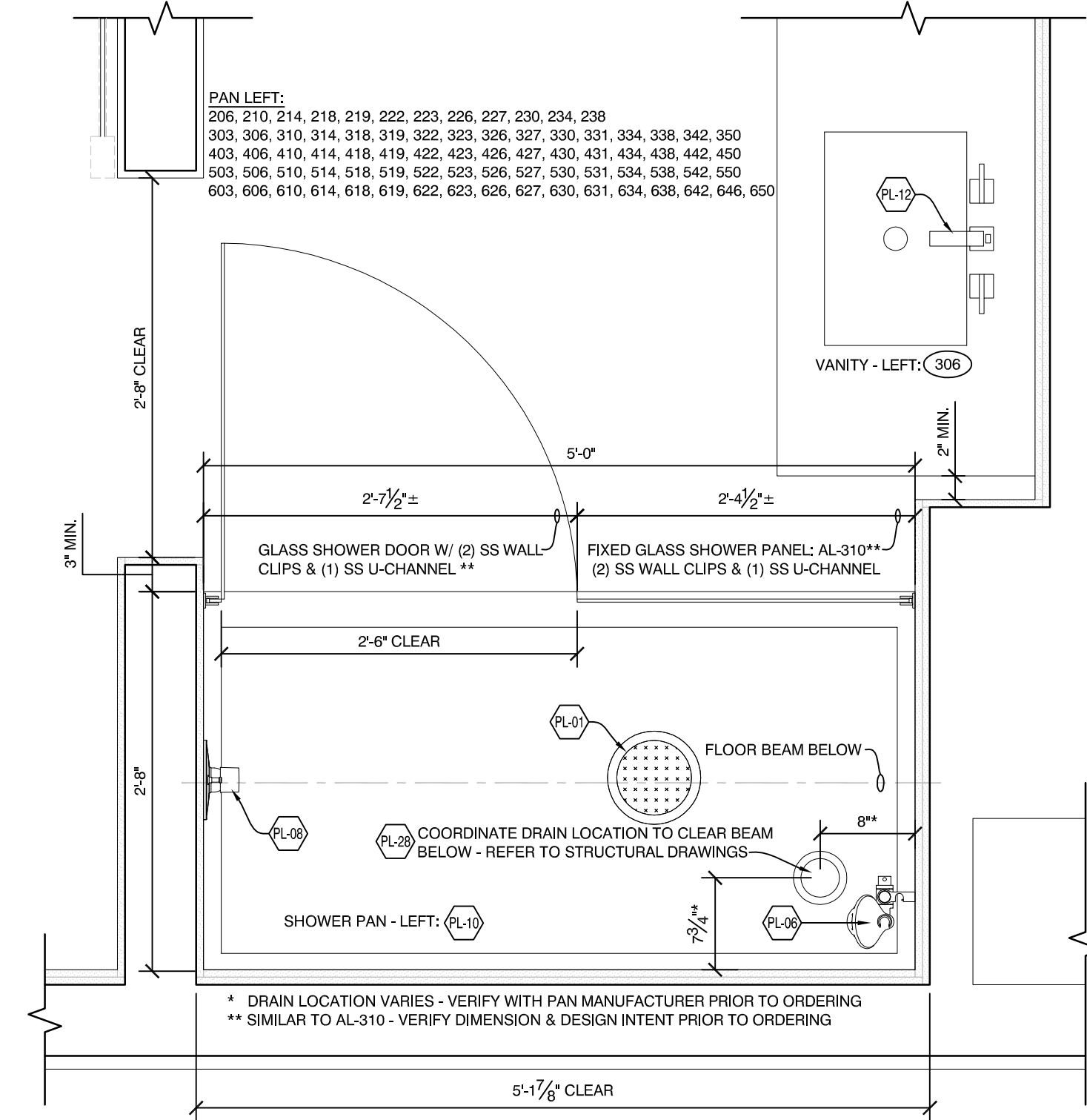
7 TV MOUNT
1-1/2" = 1'-0"



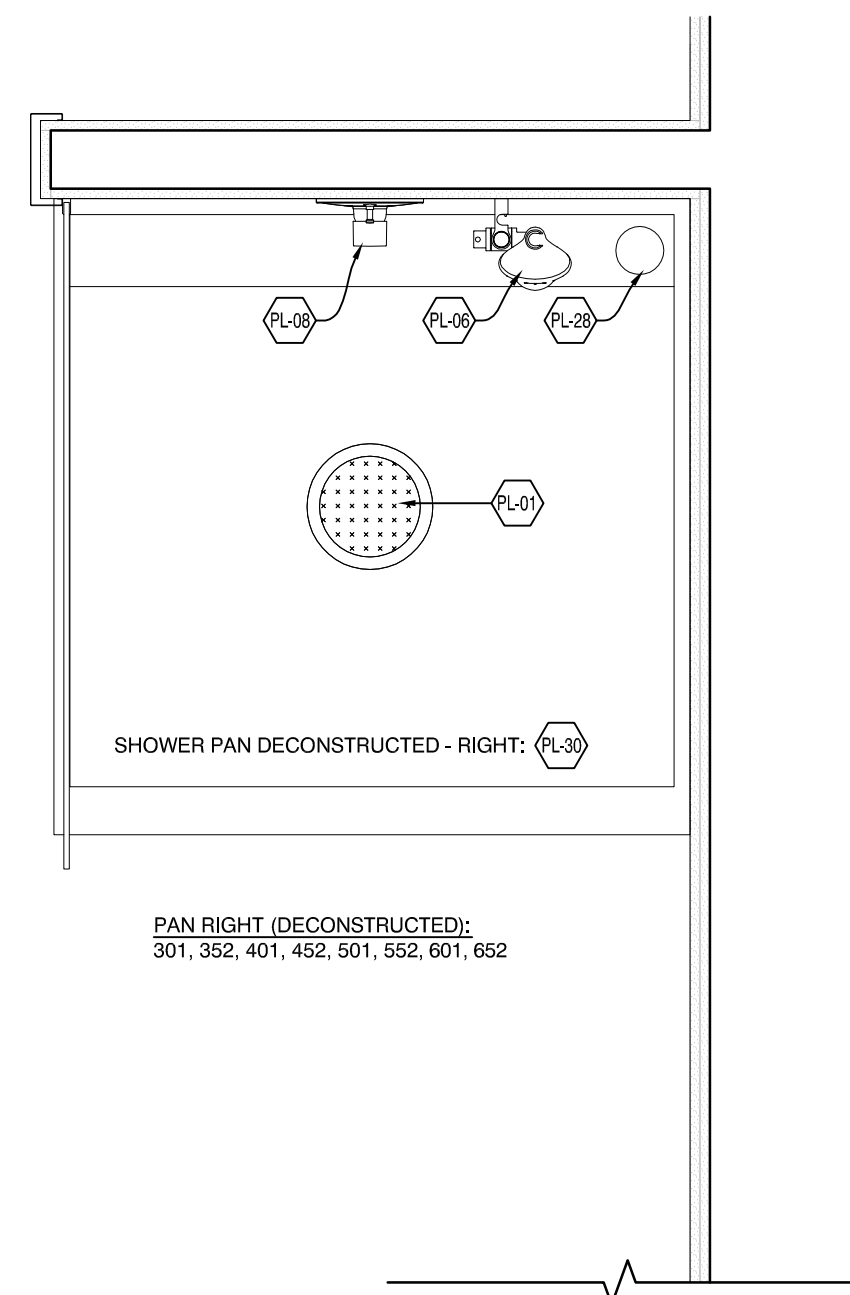
6 METRO SHOWER PLAN DETAIL - LEFT
1" = 1'-0"



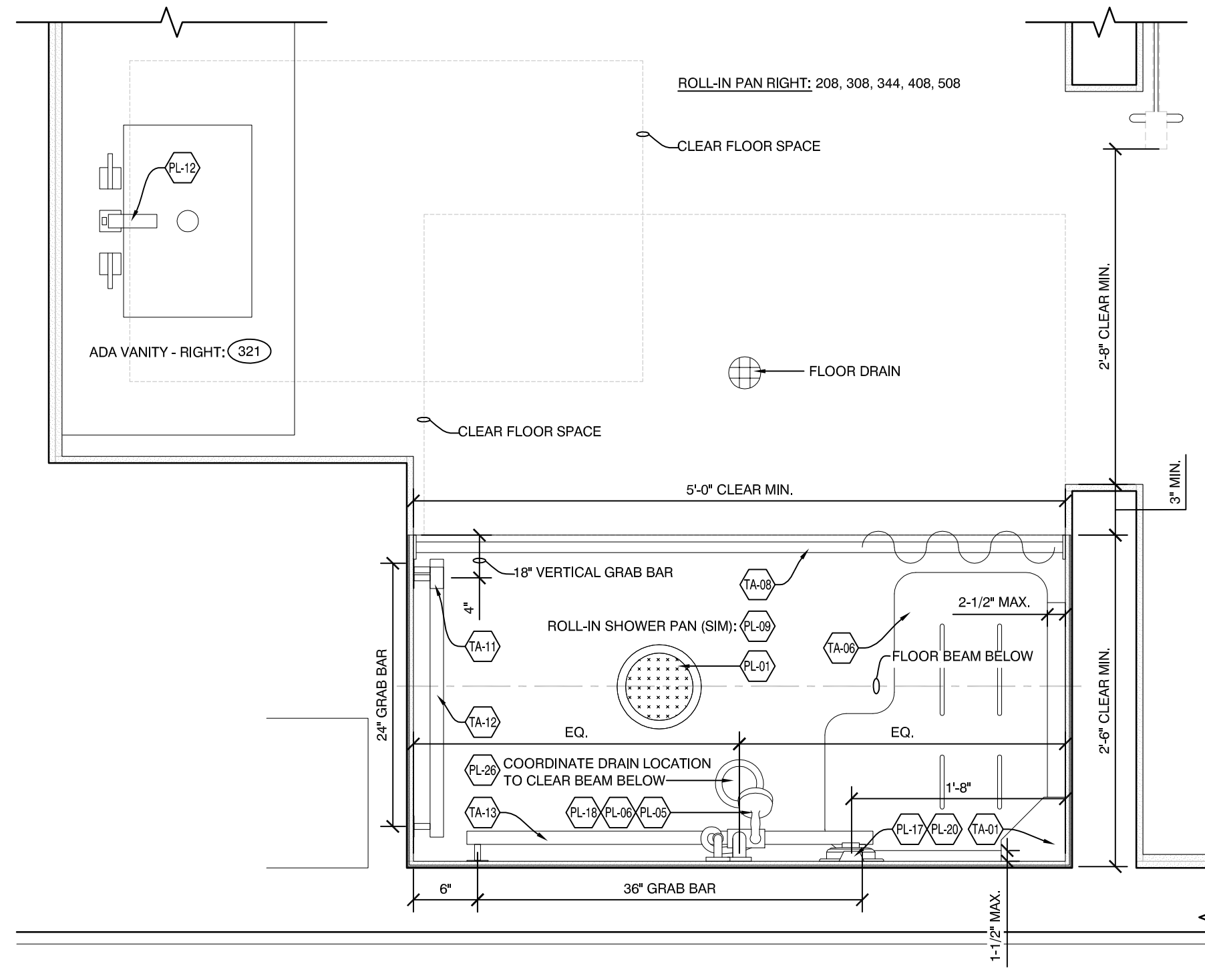
4 ROLL-IN SHOWER PLAN DETAIL - LEFT
1" = 1'-0"



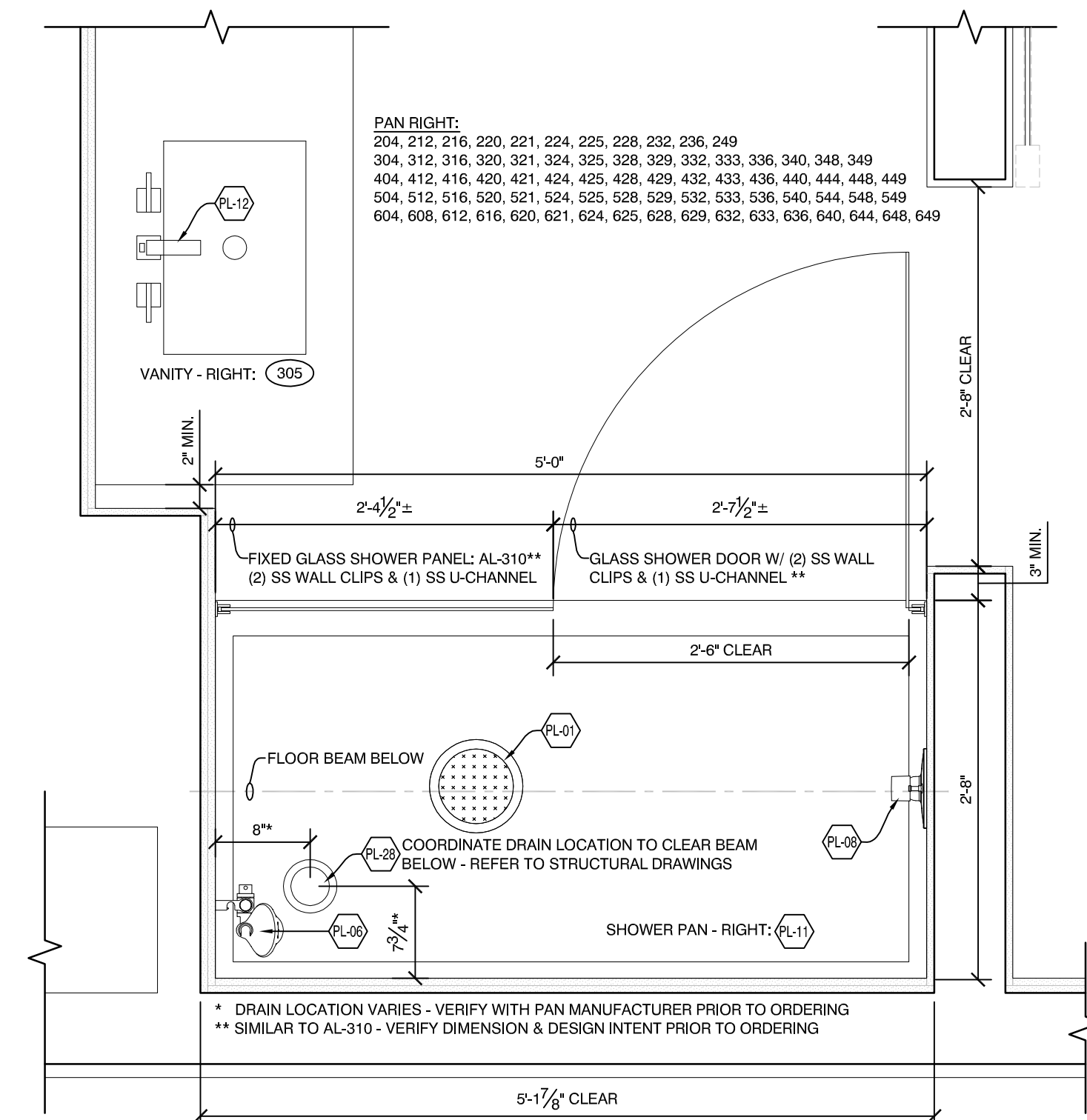
2 SHOWER PLAN DETAIL - RIGHT
1" = 1'-0"



5 METRO SHOWER PLAN DETAIL - RIGHT
1" = 1'-0"



3 ROLL-IN SHOWER PLAN DETAIL - RIGHT
1" = 1'-0"



1 SHOWER PLAN DETAIL - RIGHT
1" = 1'-0"

Tuesday, March 14, 2017, 10:46:52 AM

REVISION:

ISSUED:
03-03-17 PROGRESS
03-14-17 BUILDING PERMIT

project architect: KAK
drawn by: DLS

**GUESTROOM
DETAILS**

sheet number:
A2.13