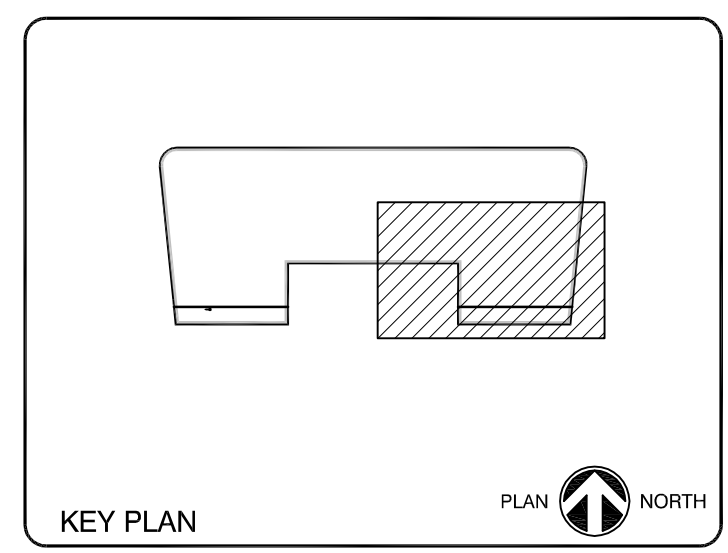


NOTE: REFER TO ID SERIES DRAWINGS FOR EXTENT AND DETAIL OF PUBLIC AREA INTERIOR FINISHES & MILLWORK



1 ENLARGED PARTIAL FIRST FLOOR PLAN
1/4" = 1'-0"



AC HOTELS by MARRIOTT
Fore Street / Hancock Street / Thames Street
Portland, Maine

REVISION:
11-15-16 INTERIOR FINISHES REMOVED
03-10-17 LOT LINE ASSEMBLY NOTE

ISSUED:
10-18-16 60% MARRIOTT REVIEW
03-14-17 BUILDING PERMIT

project architect: KAK
drawn by: DLS

ENLARGED FLOOR PLAN

sheet number:
A2.01