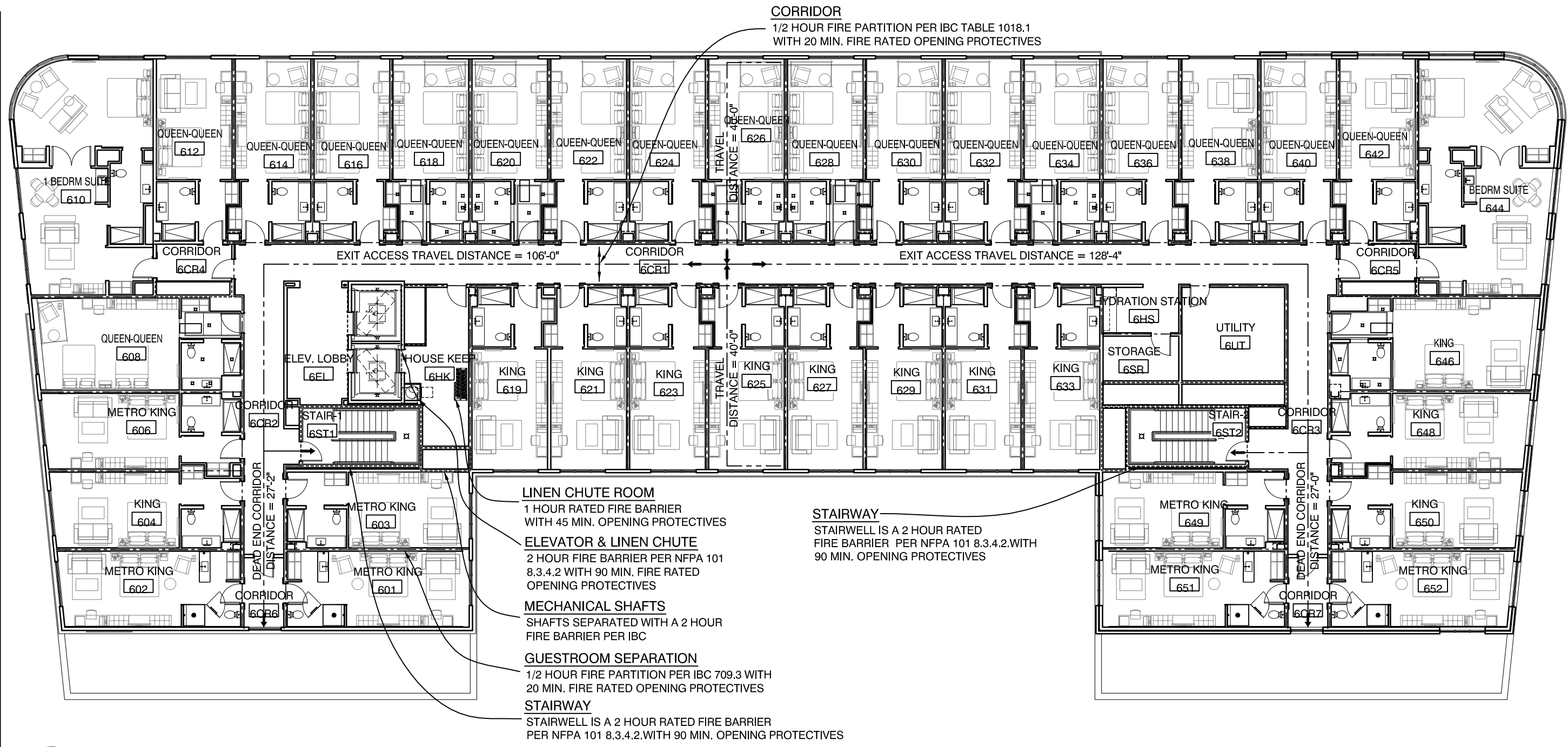
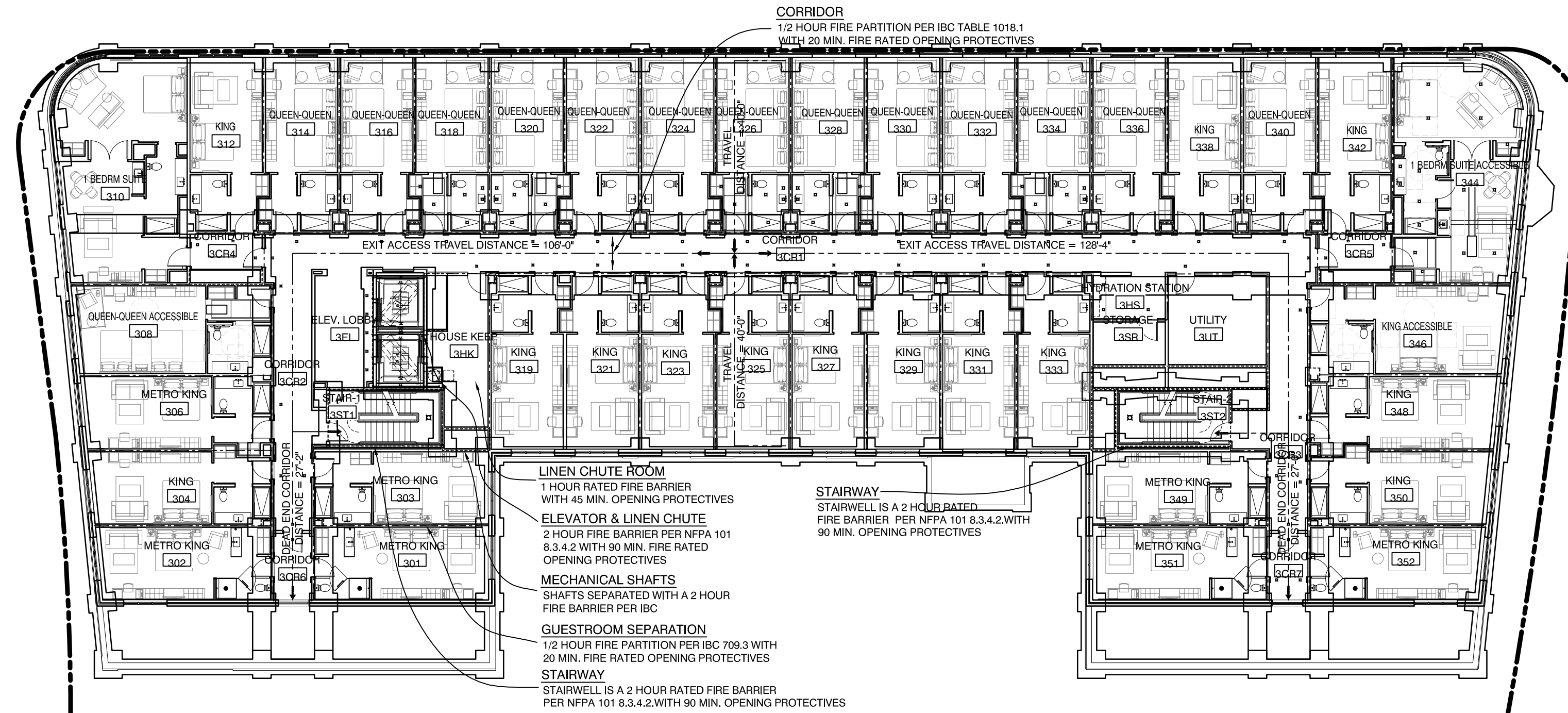


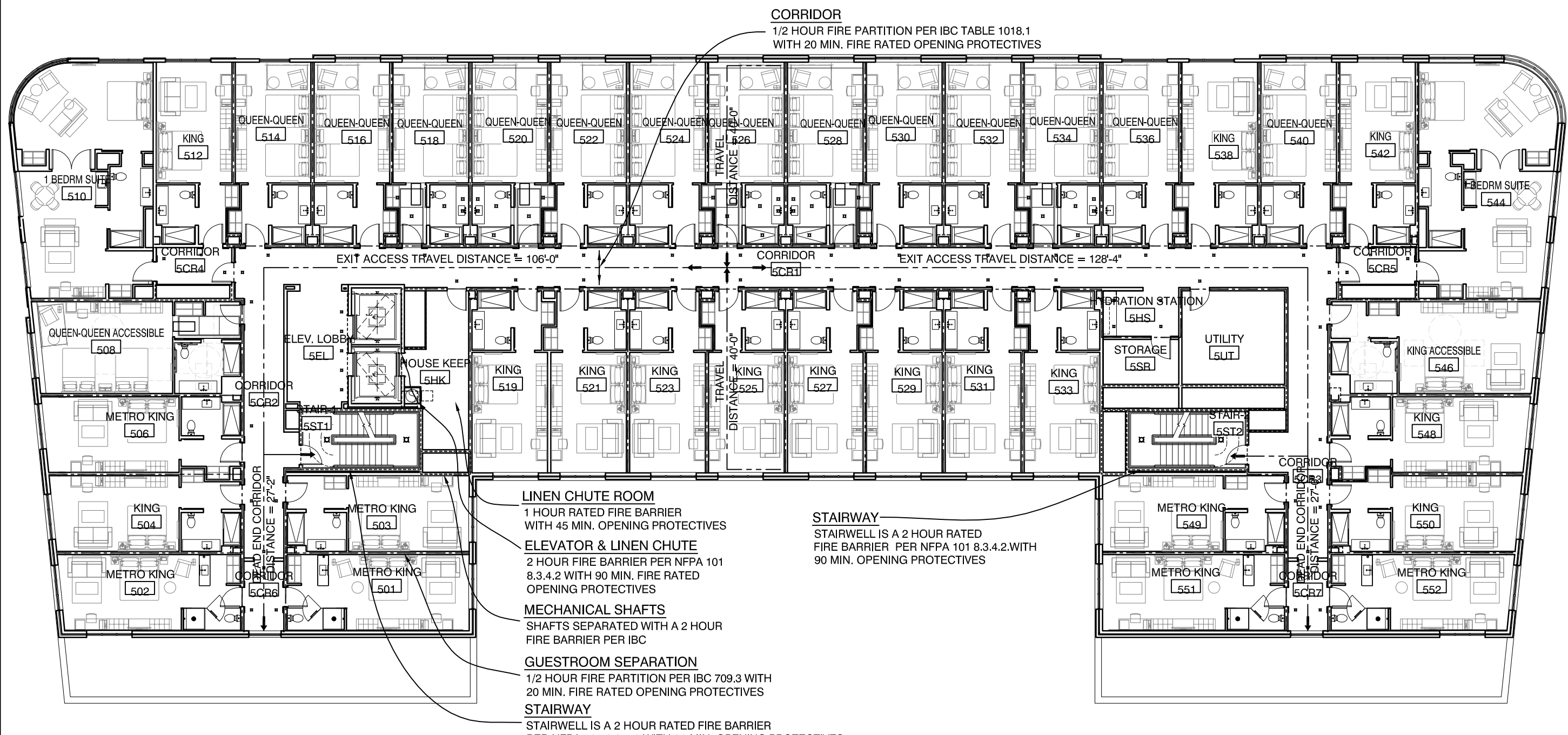
Copyright 2015 Opechee Construction Corporation



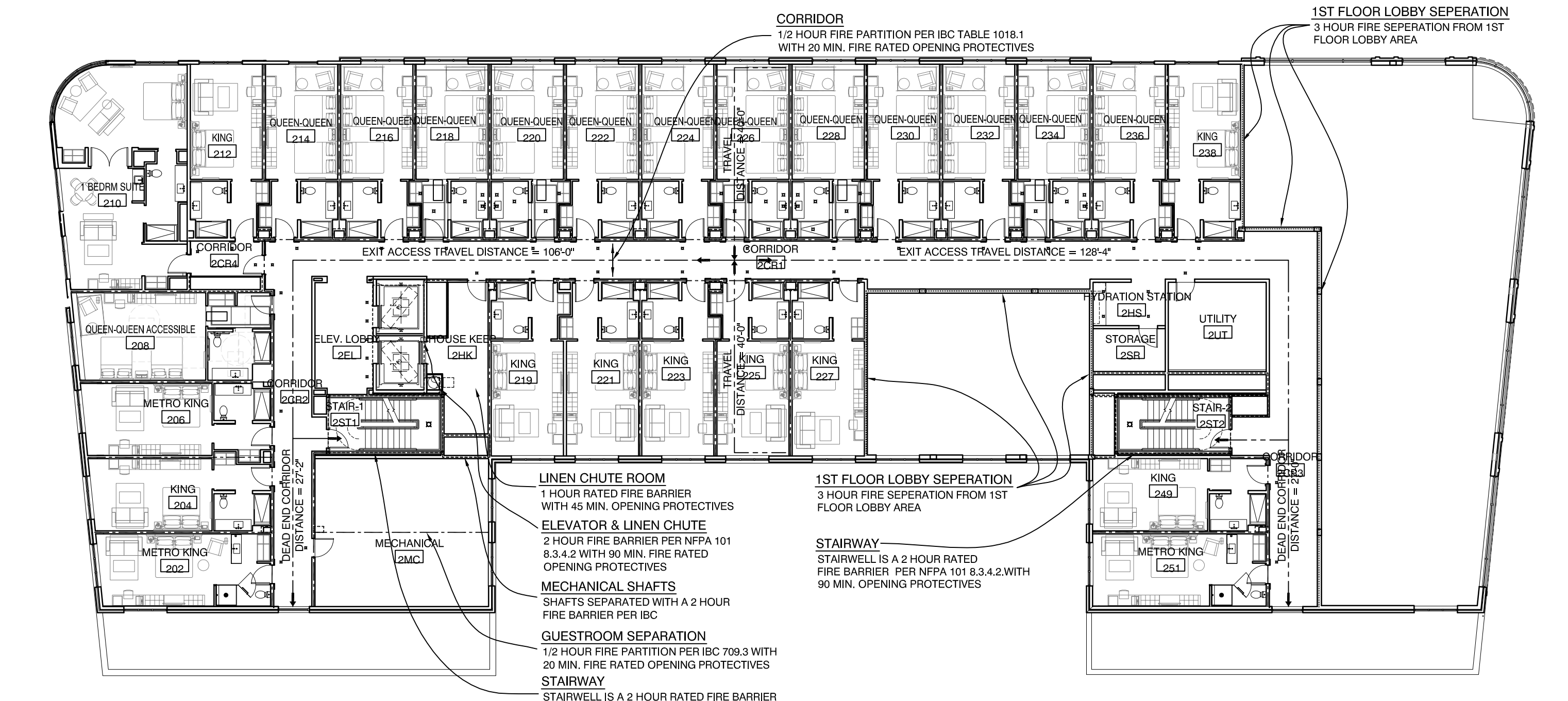
6 SIXTH FLOOR PLAN  
1/16" = 1'-0"



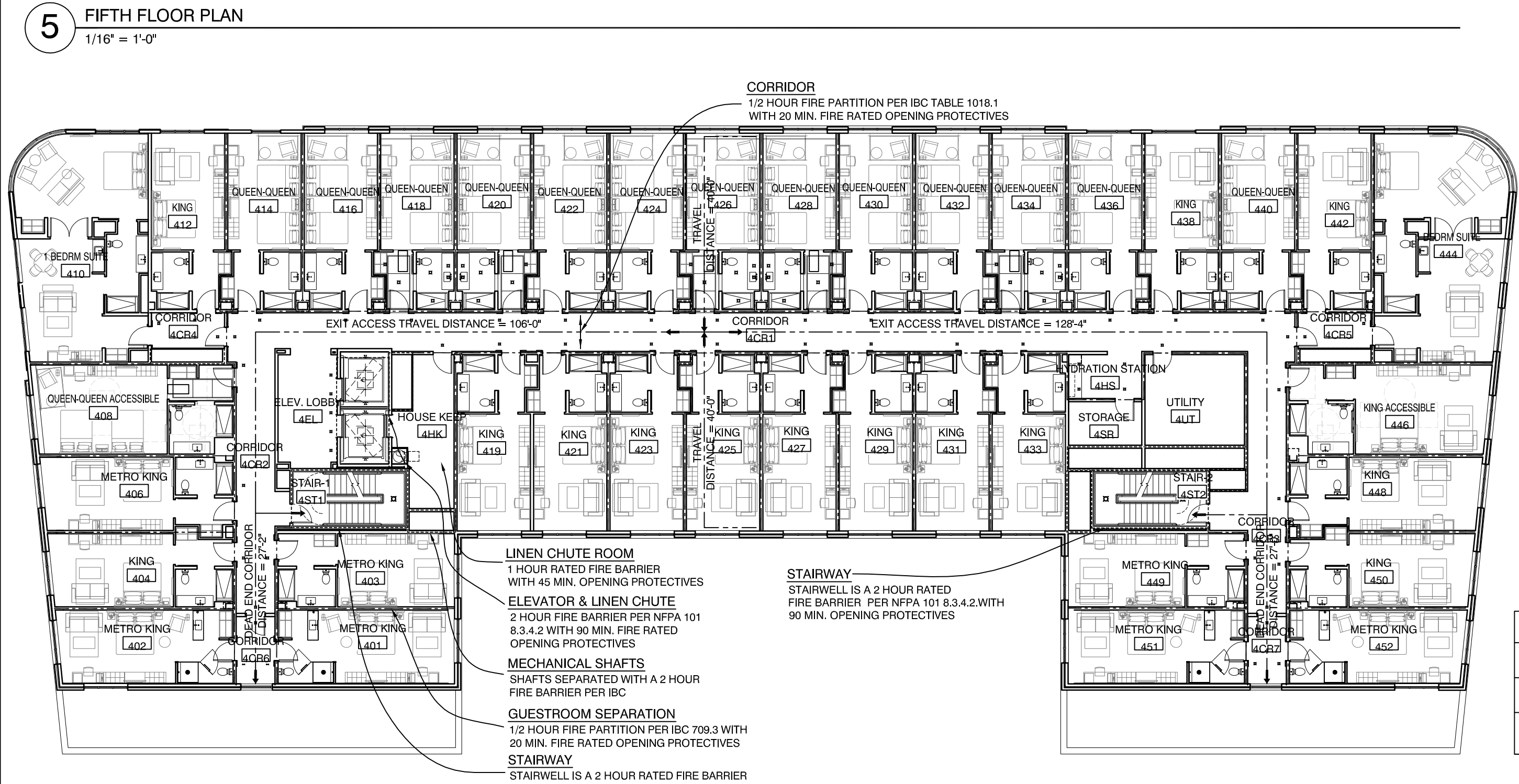
3 THIRD FLOOR PLAN  
1/16" = 1'-0"



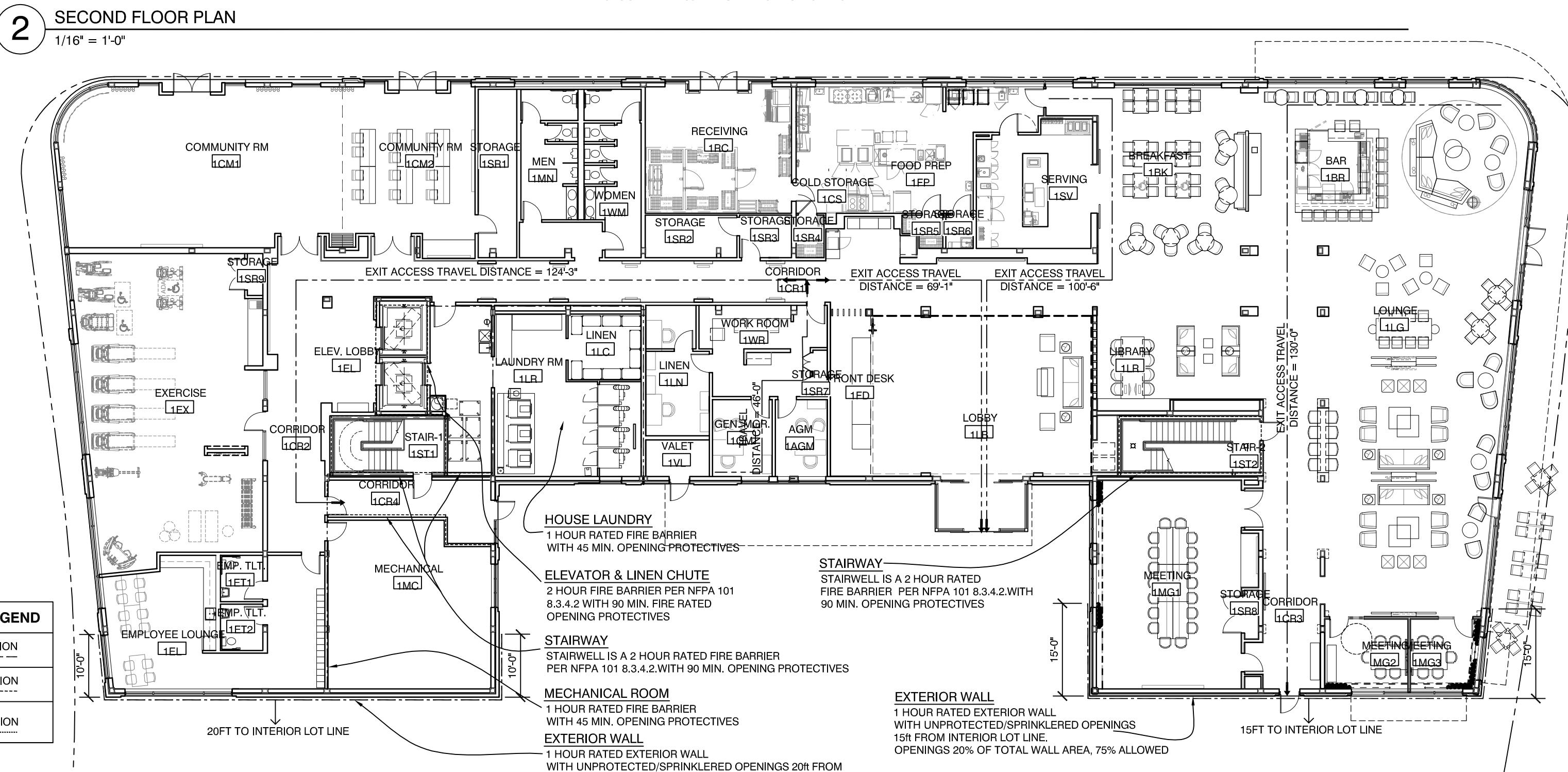
5 FIFTH FLOOR PLAN  
1/16" = 1'-0"



2 SECOND FLOOR PLAN  
1/16" = 1'-0"



4 FOURTH FLOOR PLAN  
1/16" = 1'-0"



1 FIRST FLOOR PLAN  
1/16" = 1'-0"

**WALL SEPARATION LEGEND**

|              |                              |
|--------------|------------------------------|
| [Line Style] | 1 HOUR FIRE RATED SEPARATION |
| [Line Style] | 2 HOUR FIRE RATED SEPARATION |
| [Line Style] | 3 HOUR FIRE RATED SEPARATION |

Friday, October 21, 2016 2:48:45 PM



AC HOTELS by MARRIOTT  
Fore Street / Hancock Street / Thames Street  
Portland, Maine

REVISION:  
10-12-16 PLAN REVIEWER COMMENTS

ISSUED:  
08-12-16 FOUNDATION & STEEL PERMIT  
10-21-16 BUILDING SHELL PERMIT

project architect: KAK  
drawn by: DLS

LIFE SAFETY  
CODE  
PLANS

sheet number:  
LS1.02