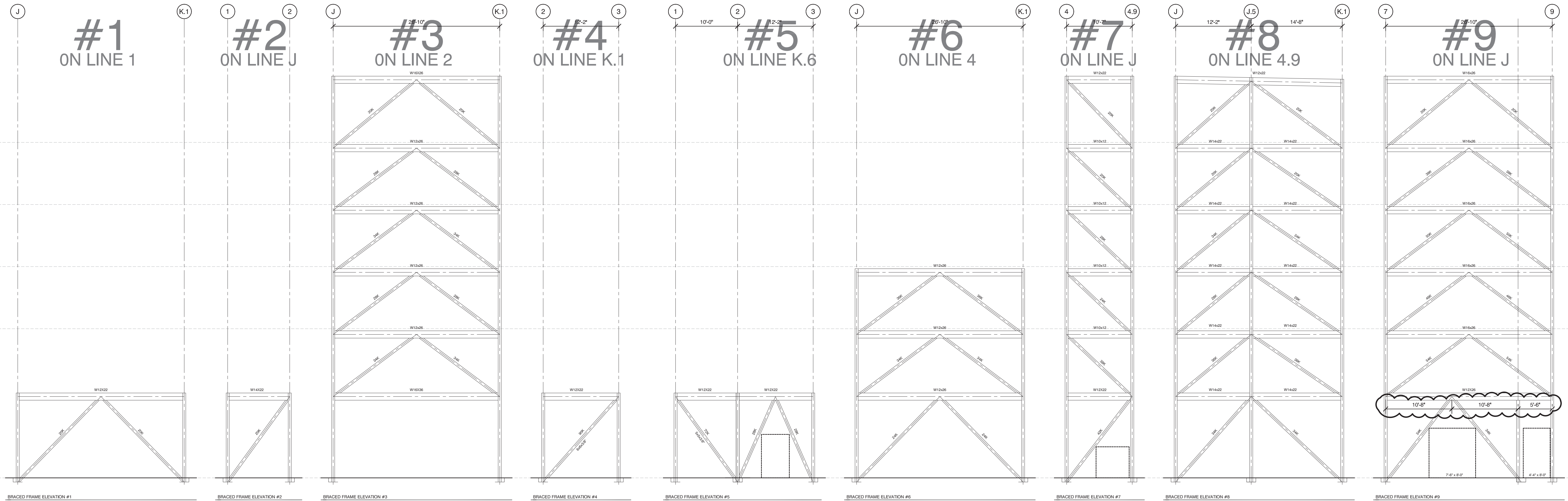


BRACED FRAME ELEVATION #10 18" x 12"  
 BRACED FRAME ELEVATION #11 18" x 12"  
 BRACED FRAME ELEVATION #12 18" x 12"  
 BRACED FRAME ELEVATION #13 18" x 12"  
 BRACED FRAME ELEVATION #14 18" x 12"  
 BRACED FRAME ELEVATION #15 18" x 12"  
 BRACED FRAME ELEVATION #16 18" x 12"

ALL BRACES HSS 5x5x1/4 UNLESS NOTED OTHERWISE



BRACED FRAME ELEVATION #1 18" x 12"  
 BRACED FRAME ELEVATION #2 18" x 12"  
 BRACED FRAME ELEVATION #3 18" x 12"  
 BRACED FRAME ELEVATION #4 18" x 12"  
 BRACED FRAME ELEVATION #5 18" x 12"  
 BRACED FRAME ELEVATION #6 18" x 12"  
 BRACED FRAME ELEVATION #7 18" x 12"  
 BRACED FRAME ELEVATION #8 18" x 12"  
 BRACED FRAME ELEVATION #9 18" x 12"



**AC HOTELS by MARRIOTT**  
 Fore Street / Hancock Street / Thames Street  
 Portland, Maine

REVISION:  
 09-02-16 JSN MARKUPS  
 09-19-16 BRACE SIZES ADDED  
 10-05-16 ELEVATOR & FRAMING REVISIONS

ISSUED:  
 08-12-16 FOUNDATION & STEEL PERMIT  
 10-14-16 FOR CONSTRUCTION

project architect: KAK  
 drawn by: DLS

**BRACE  
 FRAME  
 ELEVATIONS**

sheet number:  
**S4.03**